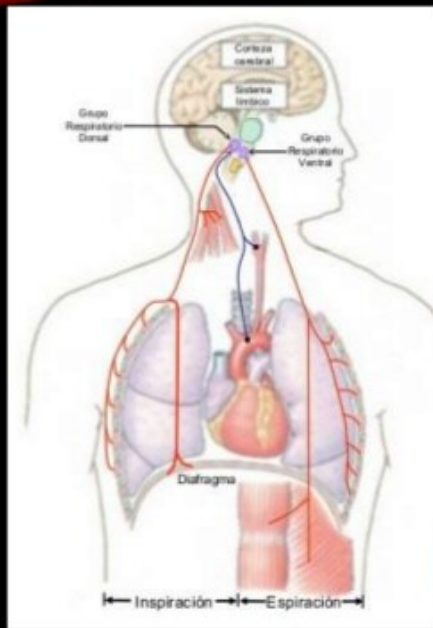
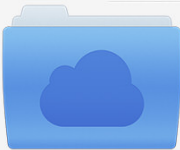


RECEPTORES GAMMA:



Están en los músculo diagramático, músculos intercostales y otros músculos respiratorios. Estos perciben el alargamiento muscular, esto es utilizado de forma refleja para controlar la fuerza de la contracción. Estos actúan cuando hay una obstrucción en las vías áreas respiratorias.

DOWNLOAD: <https://byltly.com/2992q9>





File was found and ready to download!
UPDATED 14 HOURS AGO

Fastest Source: [usenet.nl](https://www.usenet.nl)


Click the **download button** and select one of the found **cloud sources**.


6.4
2865 VIEWS


Download 

 SECURE SCANNED

You need to [log in](#) before you can post comments.


Navigation


Registration


FAQ

