

CHANGZHOU RUCAI DECORATIVE MATERIALS CO.,LTD

PU WALL PANEL

Lina Kong

lina@klnmr.com

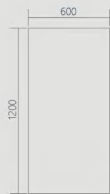
whatsapp 0086-15261100105



H3-15

老船木

重量/Weight	1.9kg
厚度/Height	40mm
尺寸/Dimensions	600x1200mm



1号色

2号色

3号色

4号色

5号色

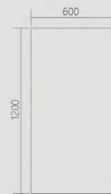
03



H3-16

炭烧木

重量/Weight	1.7kg
厚度/Height	40mm
尺寸/Dimensions	600x1200mm



1号色

2号色

3号色

4号色

5号色

04



1号色



2号色



3号色



4号色



5号色



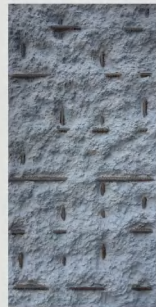
6号色

H3-17

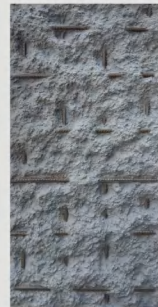
冰岛石

重量/Weight	1.4kg
厚度/Height	25mm
尺寸/Dimensions	600x1200mm

05



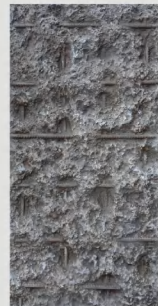
1号色



2号色



3号色



4号色

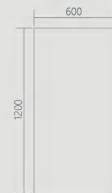


5号色

H3-18

钢筋板

重量/Weight	1.8kg
厚度/Height	55mm
尺寸/Dimensions	600x1200mm



06



1号色



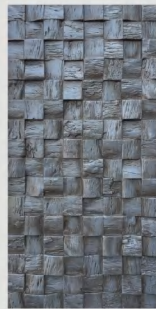
2号色

H3-19 鹅卵石

重量/Weight	1.8kg
厚度/Height	50mm
尺寸/Dimensions	600x1200mm



1号色



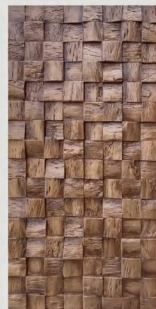
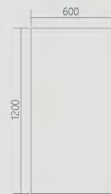
2号色



3号色

H3-9 木纹格

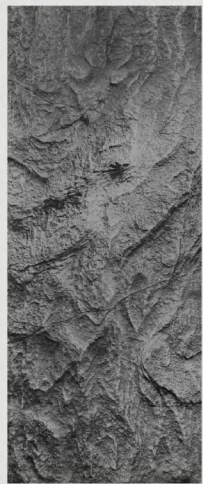
重量/Weight	1.5~1.8kg
厚度/Height	40~45mm
尺寸/Dimensions	600x1200mm



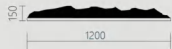
4号色



5号色



D008



厚度/Height	150 mm
尺寸/Dimensions	1200x2900mm

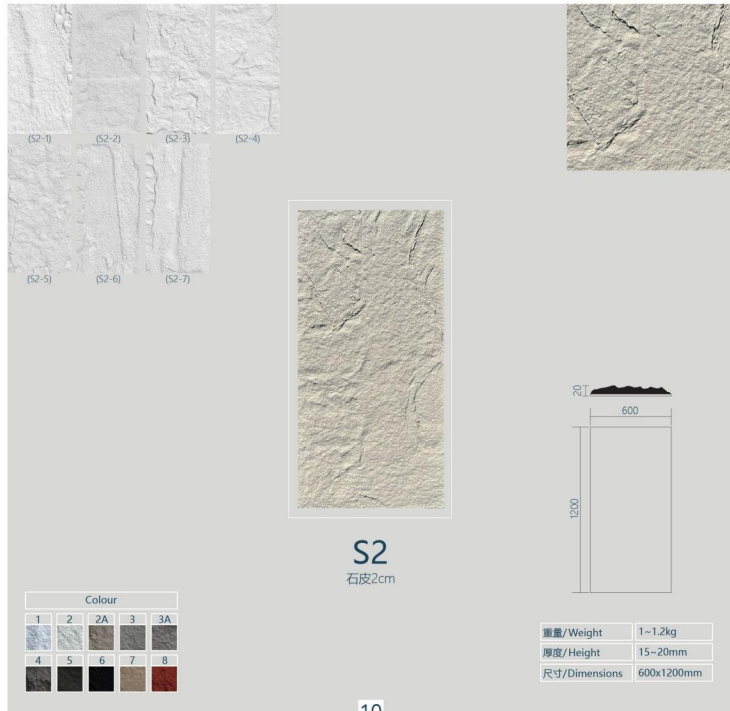
09



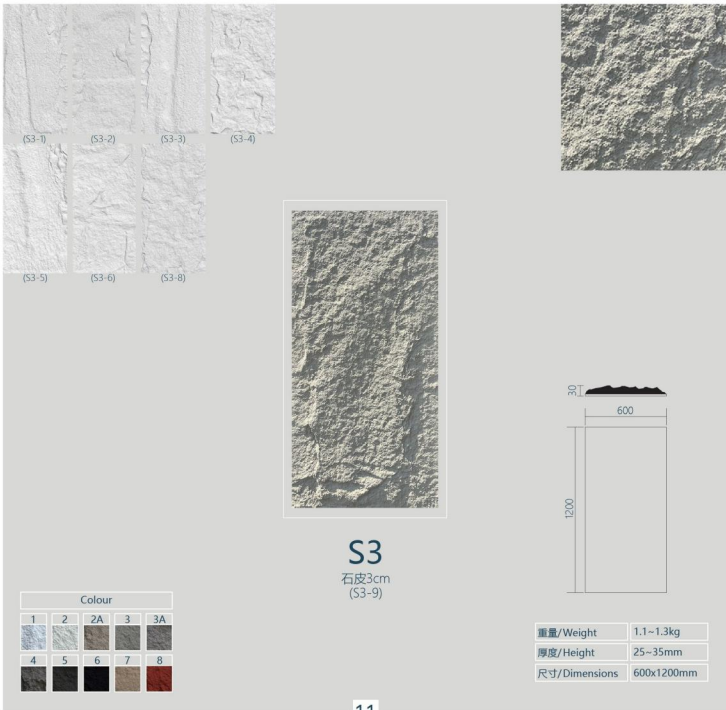
10



09



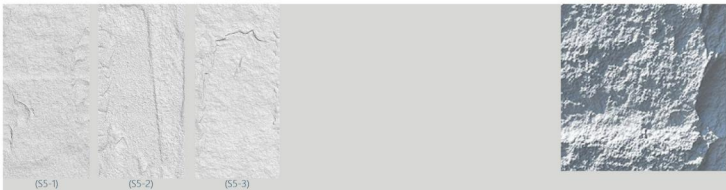
10



11



12



(S5-1)

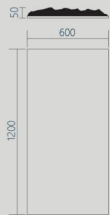
(S5-2)

(S5-3)



S5

石皮5cm

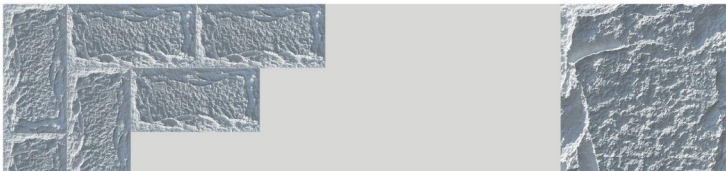


重量/Weight	1.3~1.6kg
厚度/Height	45~55mm
尺寸/Dimensions	600x1200mm

13



14



M6

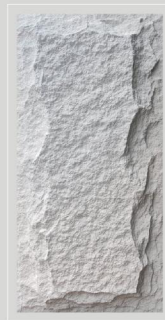
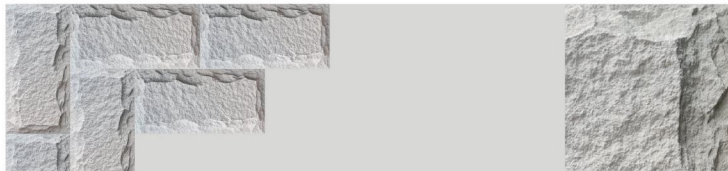
蘑菇石6cm



重量/Weight	1.2~1.4kg
厚度/Height	55~60mm
尺寸/Dimensions	600x1200mm



15



M8

蘑菇石8cm



重量/Weight	1.7~2.0kg
厚度/Height	80~85mm
尺寸/Dimensions	600x1200mm



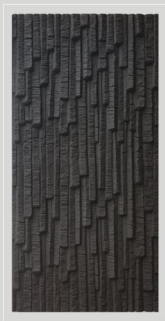
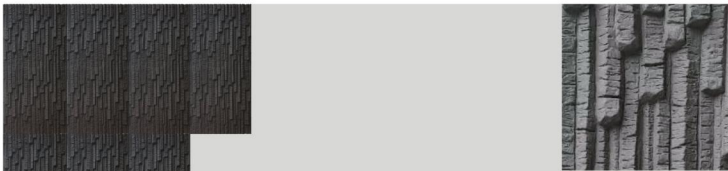
16



17



18

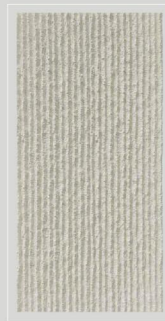
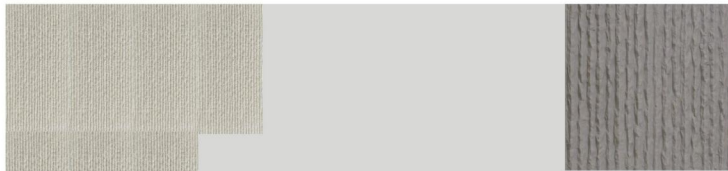


L3-1
流星石



重量/Weight	1.4~1.7kg
厚度/Height	25~30mm
尺寸/Dimensions	600x1200mm

Colour				
1	2	2A	3	3A
4	5	6	7	8



L3-2
流水石

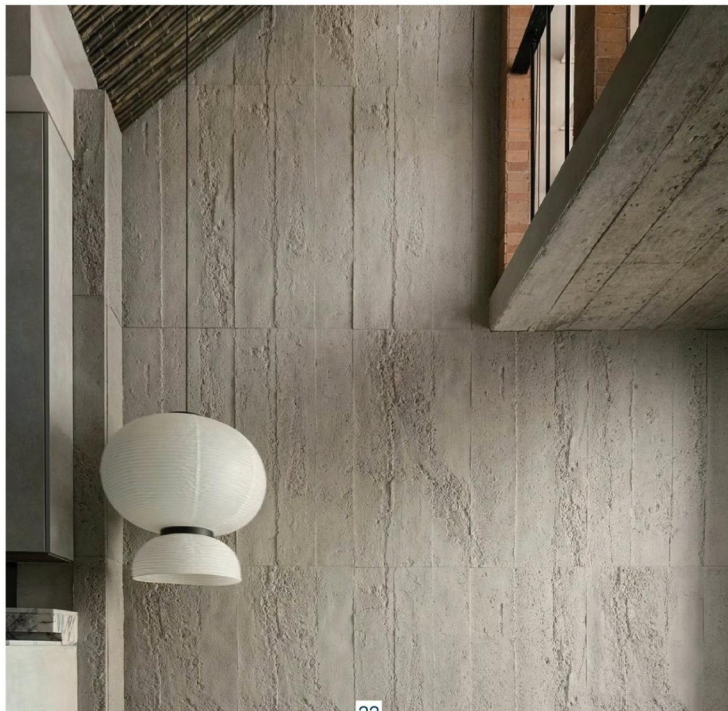


重量/Weight	1.2~1.4kg
厚度/Height	20~25mm
尺寸/Dimensions	600x1200mm

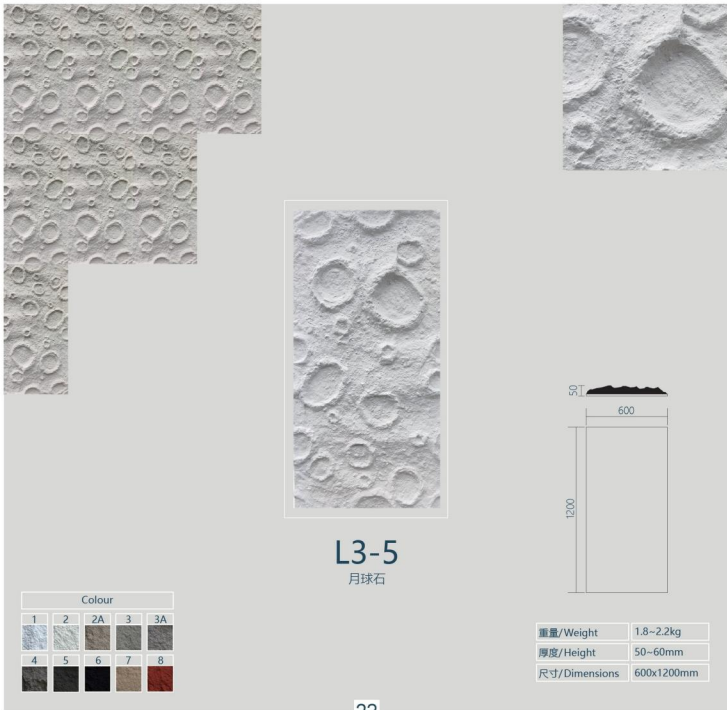
Colour				
1	2	2A	3	3A
4	5	6	7	8

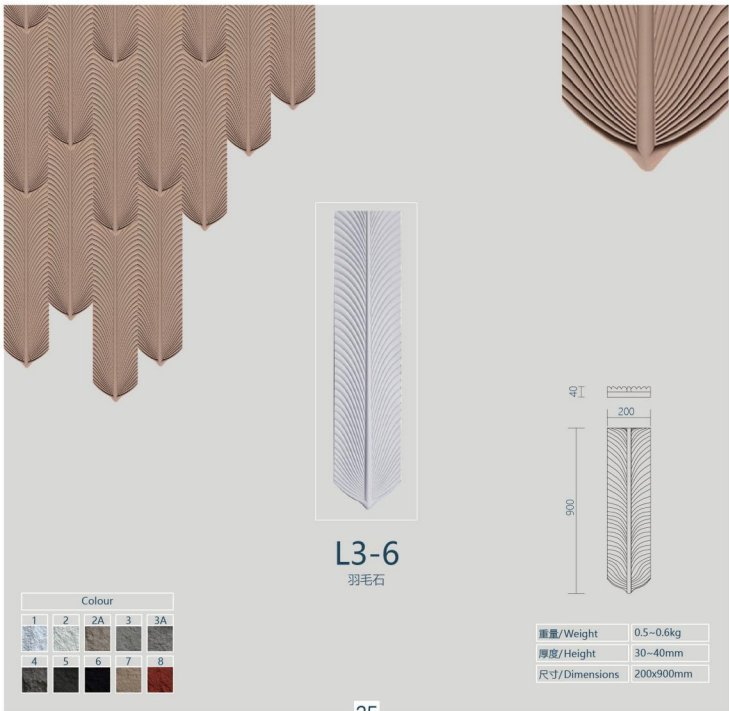


21

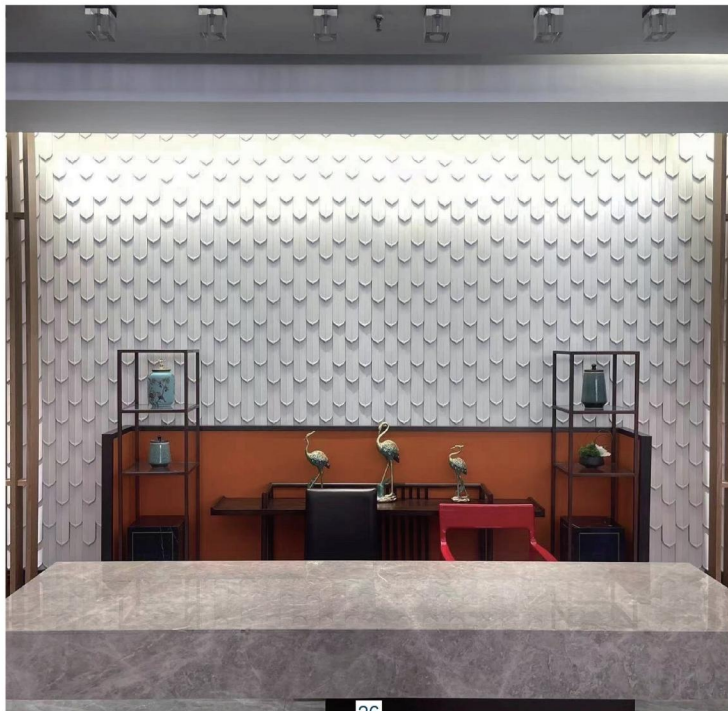


22





25



26



L3-7

小蘑菇石



重量/Weight	1.2~1.4kg
厚度/Height	22~25mm
尺寸/Dimensions	600x1200mm

27

Colour				
1	2	2A	3	3A
4	5	6	7	8



L3-8

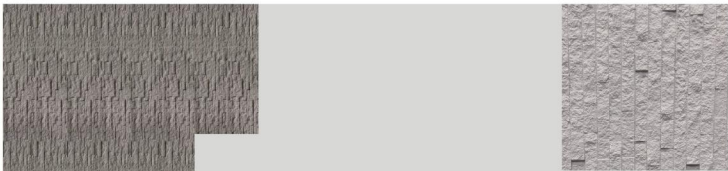
宽条石



重量/Weight	1.2~1.4kg
厚度/Height	25~30mm
尺寸/Dimensions	600x1200mm

28

Colour				
1	2	2A	3	3A
4	5	6	7	8



L3-9

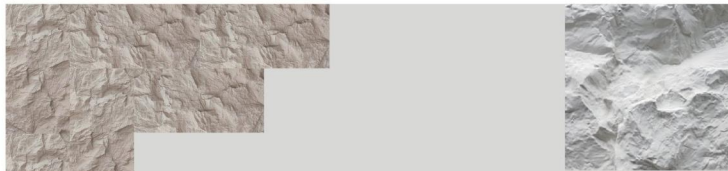
小岩石



重量/Weight	1.2~1.4kg
厚度/Height	20~25mm
尺寸/Dimensions	600x1200mm

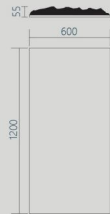
Colour				
1	2	2A	3	3A
4	5	6	7	8

29



Y6-1

山岩石



重量/Weight	1.8~2.2kg
厚度/Height	50~55mm
尺寸/Dimensions	600x1200mm

Colour				
1	2	2A	3	3A
4	5	6	7	8

30



Y6-2

Y6-3

山岩石连纹款

Y6-4

Colour

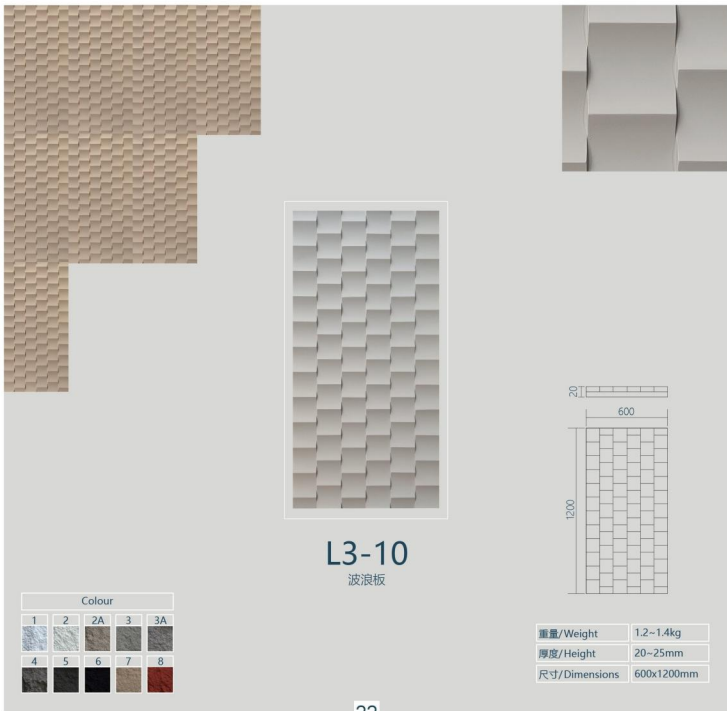


重量/Weight	1.8~2.2kg
厚度/Height	50~55mm
尺寸/Dimensions	600x1200mm

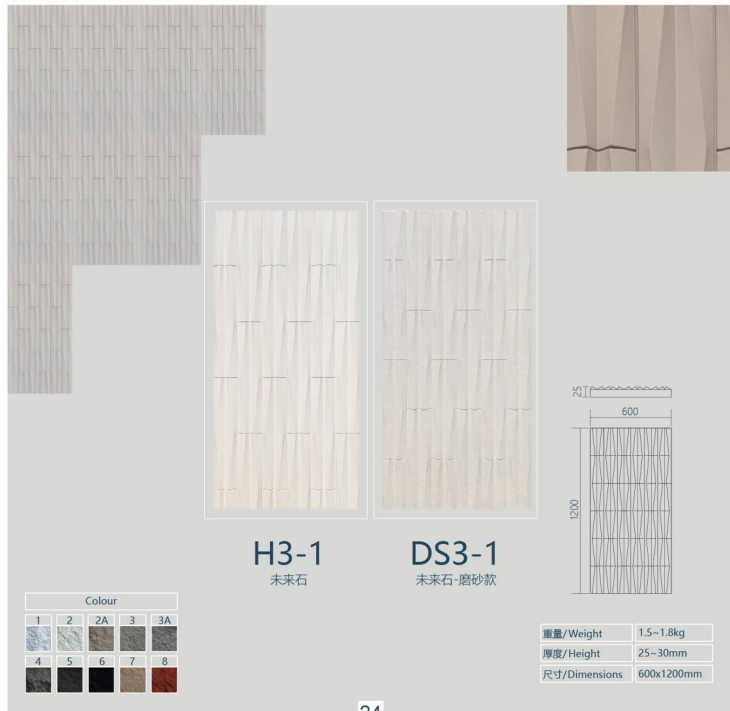
31



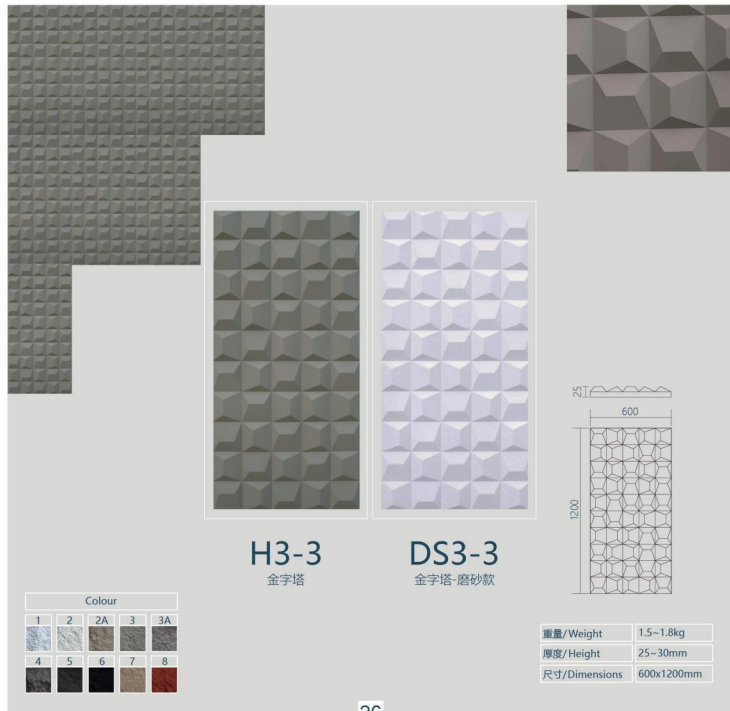
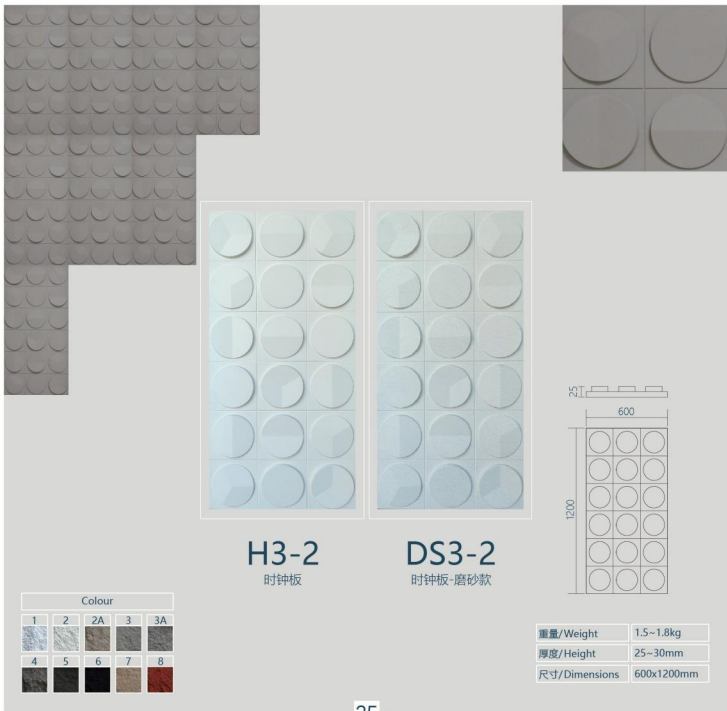
32

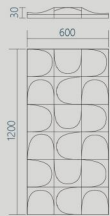
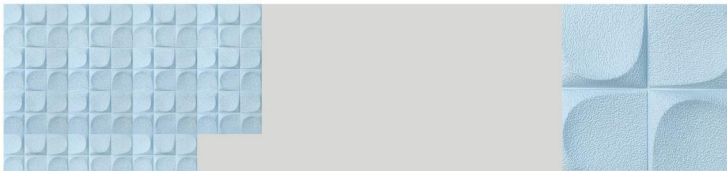


33



34

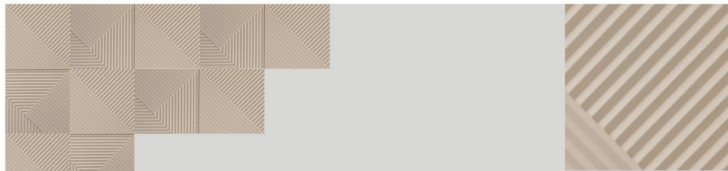




H3-4
面包砖



重量/Weight	1.5~1.8kg
厚度/Height	30~35mm
尺寸/Dimensions	600x1200mm



H3-5
格栅板

DS3-5
格栅板-磨砂款



重量/Weight	1.5~1.8kg
厚度/Height	25~30mm
尺寸/Dimensions	600x1200mm

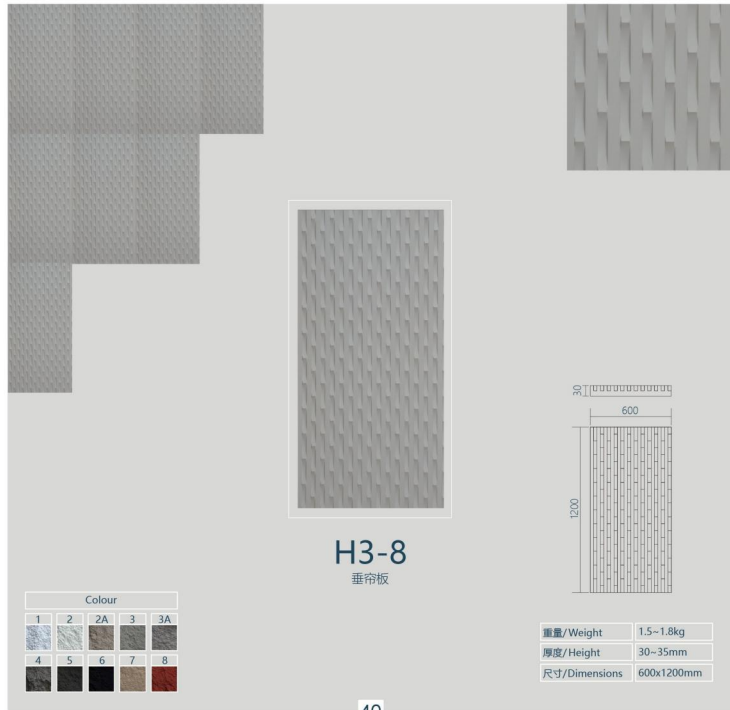


H3-6

层叠板

Colour				
1	2	2A	3	3A
4	5	6	7	8

重量/Weight	1.2~1.4kg
厚度/Height	22~25mm
尺寸/Dimensions	460x1070mm

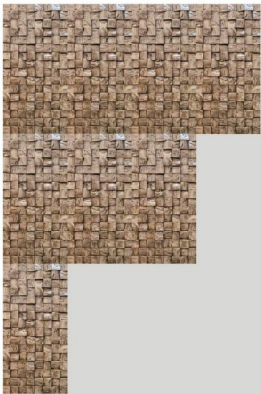


H3-8

垂帘板

Colour				
1	2	2A	3	3A
4	5	6	7	8

重量/Weight	1.5~1.8kg
厚度/Height	30~35mm
尺寸/Dimensions	600x1200mm



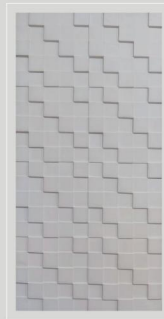
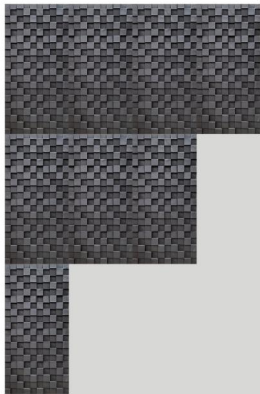
H3-9

木纹格



重量/Weight	1.5~1.8kg
厚度/Height	40~45mm
尺寸/Dimensions	600x1200mm

41



H3-10

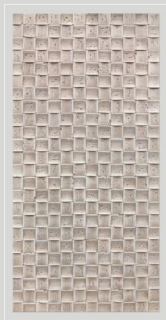
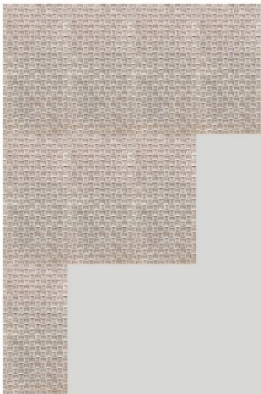
素方格



重量/Weight	1.5~1.8kg
厚度/Height	30~35mm
尺寸/Dimensions	600x1200mm

42



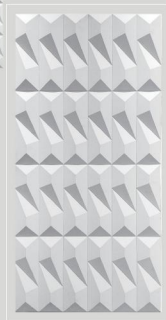
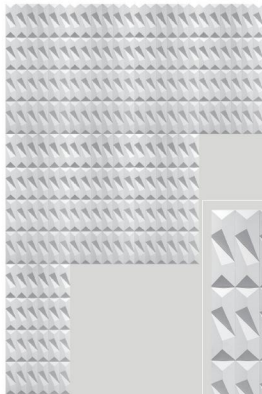


H3-11

洞石马赛克



重量/Weight	1.5~1.8kg
厚度/Height	25~30mm
尺寸/Dimensions	600x1200mm

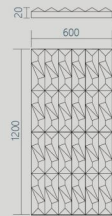


H3-12

几何窗

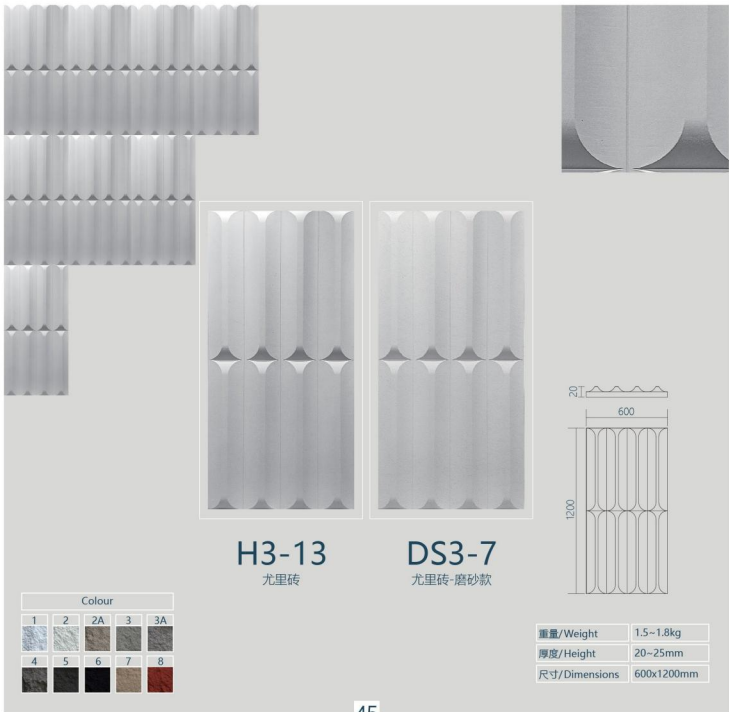
DS3-6

几何窗-磨砂款

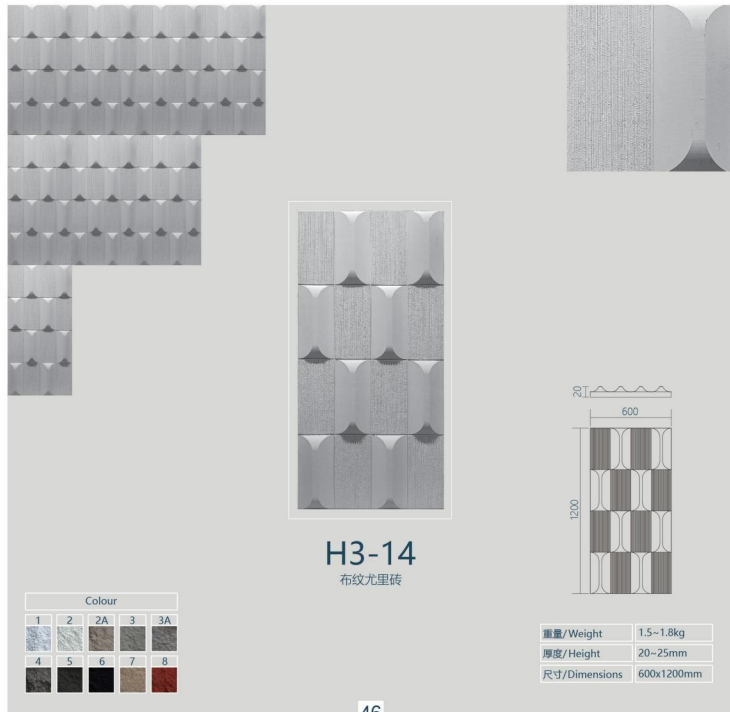


重量/Weight	1.5~1.8kg
厚度/Height	20~25mm
尺寸/Dimensions	600x1200mm

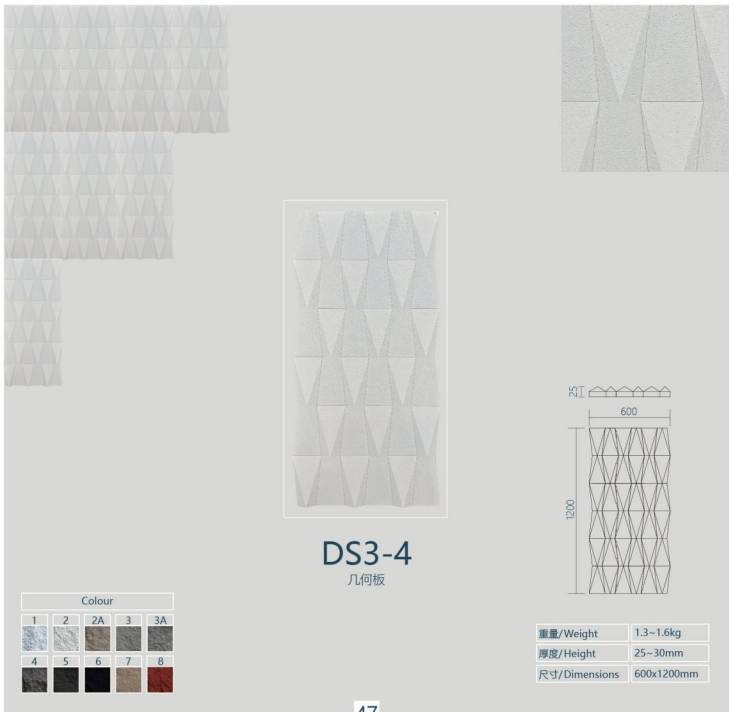




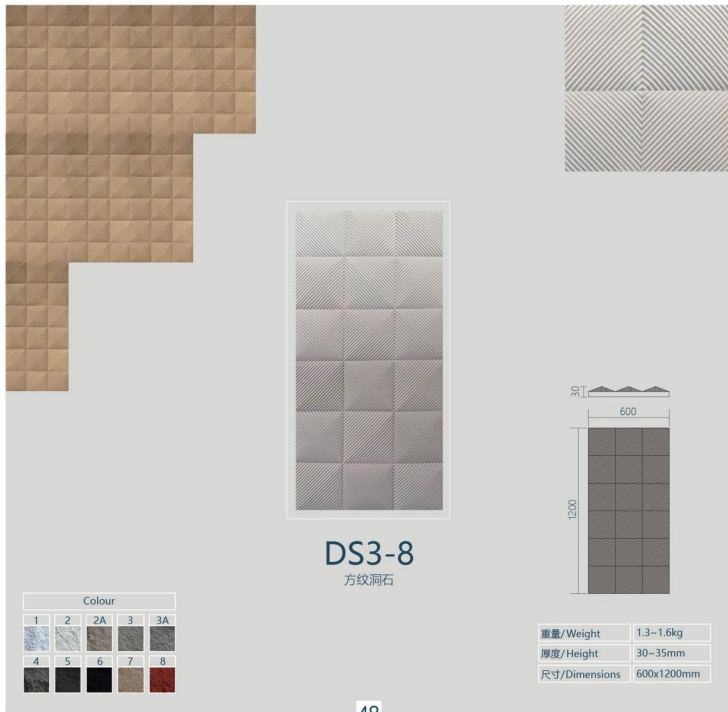
45



46



47



48

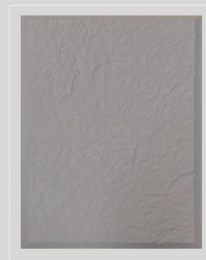


Y6-5



Y6-6

Colour				
1	2	2A	3	3A
4	5	6	7	8



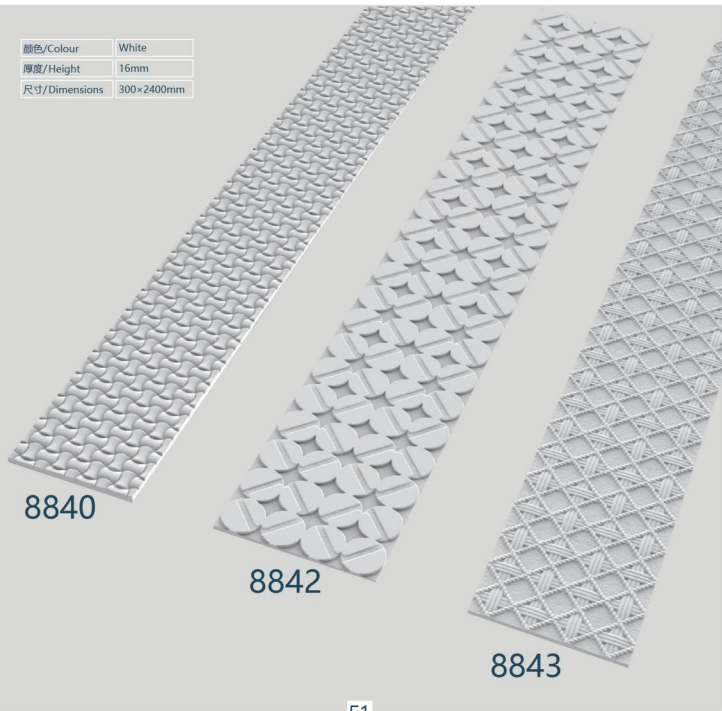
Y6-7



Y6-8

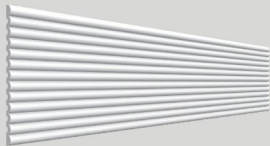


颜色/Colour	White
厚度/Height	16mm
尺寸/Dimensions	300×2400mm

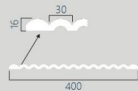


51

格栅板系列/GRILLE PANEL



E310



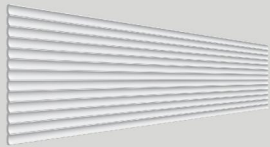
颜色/Colour	White
厚度/Height	16mm
尺寸/Dimensions	400×2400mm



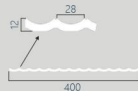
E311



颜色/Colour	White
厚度/Height	20mm
尺寸/Dimensions	400×2400mm



E312



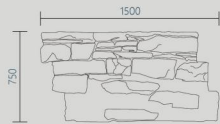
颜色/Colour	White
厚度/Height	12mm
尺寸/Dimensions	400×2400mm

52



W001
堡垒石

Colour



重量/Weight	3~4kg
厚度/Height	60mm
尺寸/Dimensions	750x1500mm

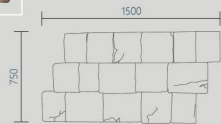


W002-A



W002-B
玛雅石

Colour



重量/Weight	3~4kg
厚度/Height	60~65mm
尺寸/Dimensions	750x1500mm



W003-A



W003-B

城墙石



重量/Weight	3-4kg
厚度/Height	35-45mm
尺寸/Dimensions	750x1500mm

Colour



W005-A

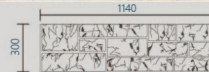
长城石



W005-B

长城石

Colour



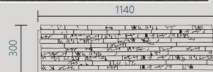
重量/Weight	1-1.5kg
厚度/Height	30mm
尺寸/Dimensions	300x1140mm



W006-A
堆砌石

W006-B
堆砌石

Colour



重量/Weight	1~1.5kg
厚度/Height	30mm
尺寸/Dimensions	300x1140mm



W007
文化砖

Colour



重量/Weight	1~1.5kg
厚度/Height	25mm
尺寸/Dimensions	300x1160mm



W008-A

海腐木



W008-B

海腐木

Colour

仿古棕



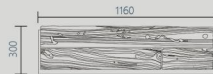
维多利亚白



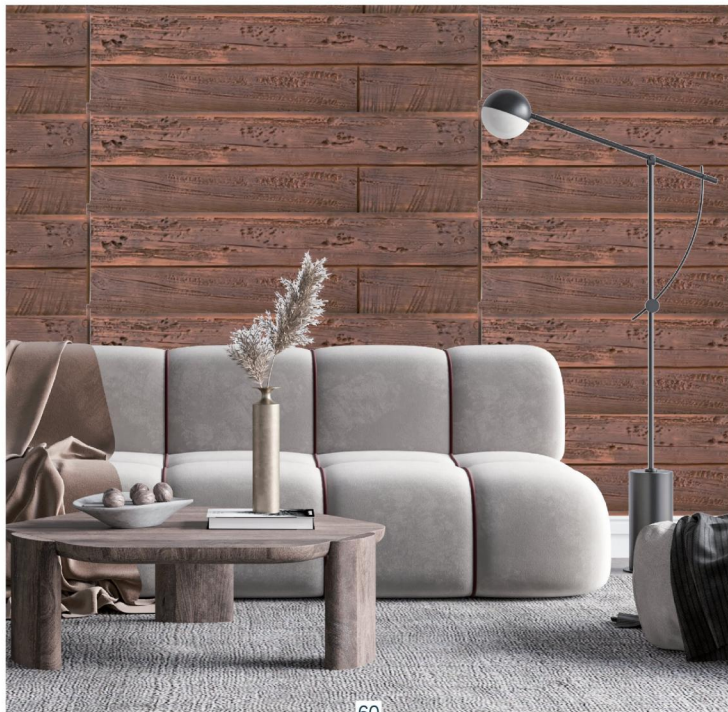
仿古橙



仿古黑



重量/Weight	1~1.5kg
厚度/Height	25mm
尺寸/Dimensions	300x1160mm





Colour				
1	2	2A	3	3A
4	5	6	7	8

D001
平纹大板

重量/Weight	4~4.8kg
厚度/Height	50~55mm
尺寸/Dimensions	800x2400mm

61



62



D002
凹凸大板



重量/Weight	4~4.8kg
厚度/Height	35~40mm
尺寸/Dimensions	600x2900mm



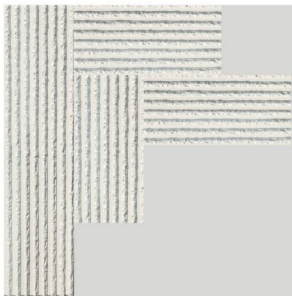


Colour				
1	2	2A	3	3A
4	5	6	7	8

D003
山岩石大板

重量/Weight	4~4.8kg
厚度/Height	100~110mm
尺寸/Dimensions	600x2400mm





D004
条纹石大板

Colour				
1	2	2A	3	3A
4	5	6	7	8

重量/Weight	4~4.8kg
厚度/Height	40~45mm
尺寸/Dimensions	600x2900mm





RT

600

2000



D005系列

连纹山岩石大板

重量/Weight	4-4.8kg
厚度/Height	50-55mm
尺寸/Dimensions	600x2900mm





D006
山峰大板



重量/Weight	8~9kg
厚度/Height	100~120mm
尺寸/Dimensions	1200x2900mm

71



72



D007
星月石大板

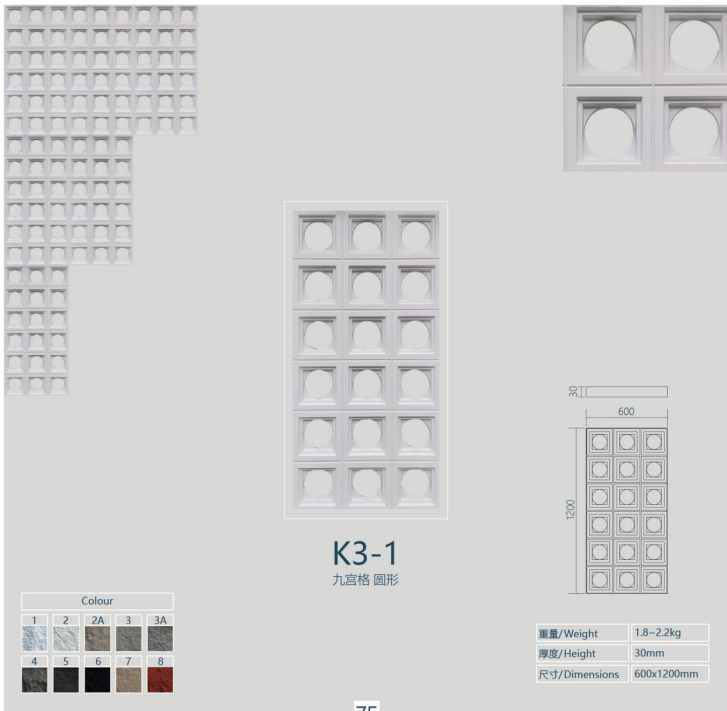
73



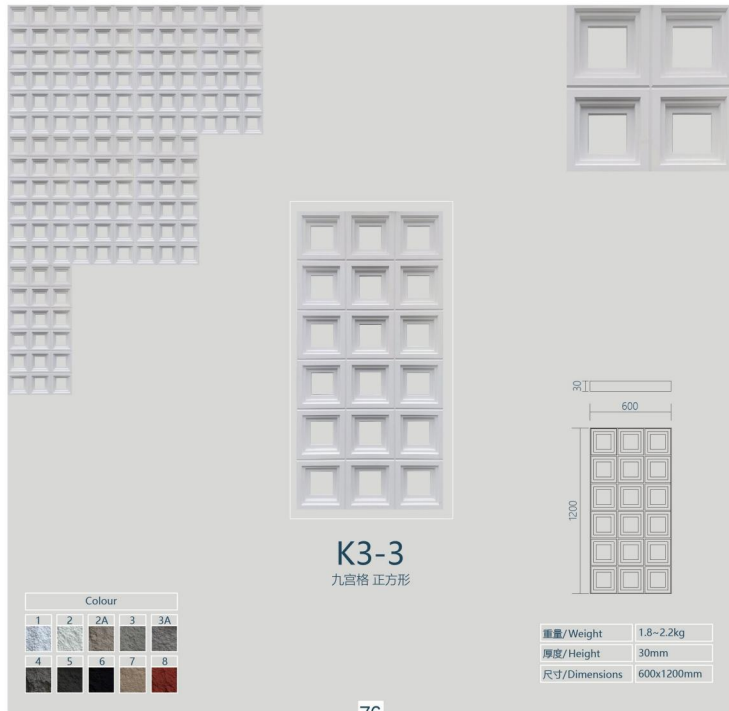
重量/Weight	4~4.8kg
厚度/Height	40~45mm
尺寸/Dimensions	600x2900mm



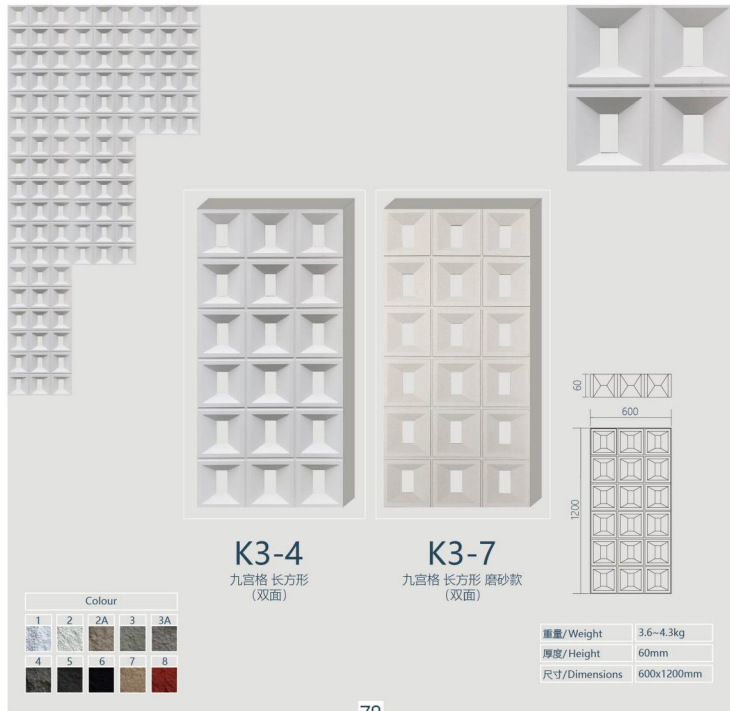
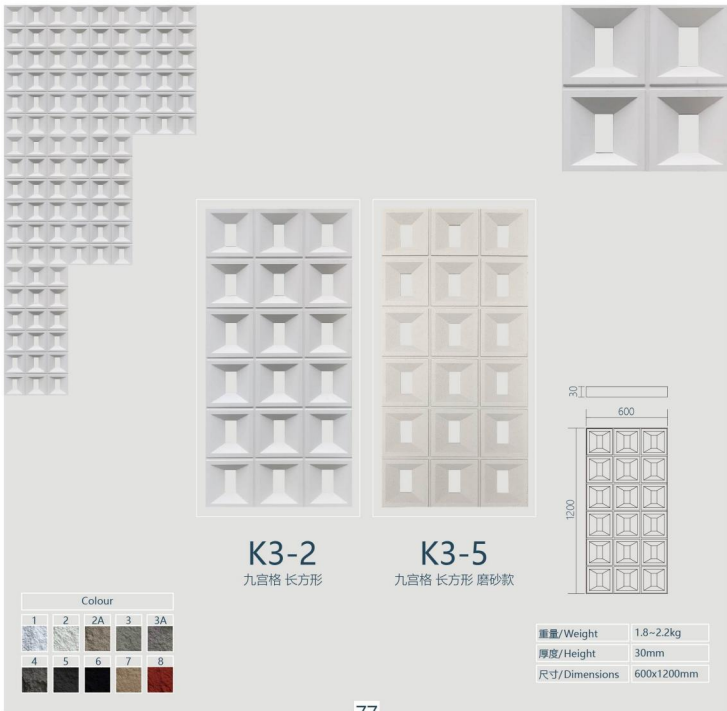
74

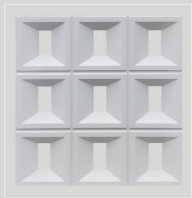
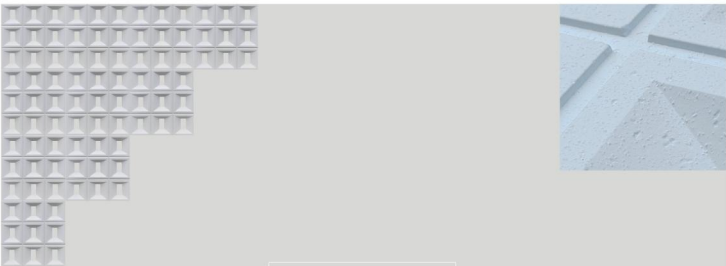


75



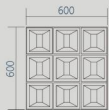
76





K3-6

九宫格 长方形 磨砂款



Colour				
1	2	2A	3	3A
4	5	6	7	8

重量/Weight	0.9~1.1kg
厚度/Height	30mm
尺寸/Dimensions	600x600mm

