

Super English

Level 5 - Unit 15
Insects - Lesson 3





Vocabulary

Insects - Vocabulary



mate: to partner with an animal of the same species
to produce more babies (v)



The male and female ladybugs **mate** so that
the female can have eggs that become babies.

Insects - Vocabulary



wound: a damaged area of the body, such as a cut or hole in the skin or flesh made by a weapon (n)



The girl has a **wound** on her arm from falling on glass.

Insects - Vocabulary



soldier: a person who is in an army, especially someone who fights when there is a war (n)



The **soldiers** were fighting a fierce battle against the enemy.

Insects - Vocabulary



mound: a large pile something like of earth, stones, etc.; like a small hill (n)

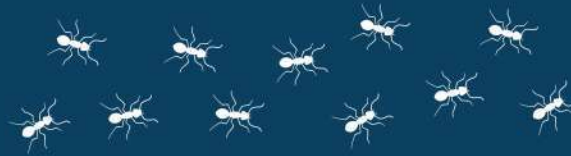


Termites build a large **mound** of dirt for their colony to live in.



Let's
Read!

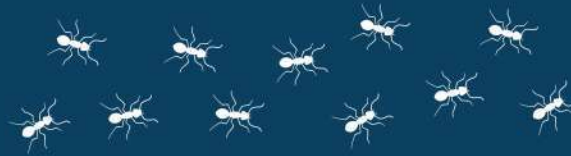
Ants



There are over 12,000 different species of ants, which can be found on every continent except Antarctica. Ants live in large groups called colonies. An ant can lift 20 times its own body weight. If you were as strong as an ant, you could pick up a car!

There are three kinds of ants in a colony: The queen, the female workers, and the males. The queen and the males have wings. The queen is the only ant that can lay eggs. The male ant's job is to **mate** with future queen ants, and they do not live very long afterward. The queen spends all of her life laying eggs! Depending on the species, a colony may have one queen or many queens

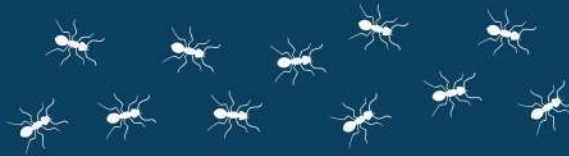
Ants



Ant colonies also have soldier ants that protect the queen, defend the colony, gather or kill food, and attack enemy colonies in search for food and nesting space. If they defeat another ant colony, they take away the eggs of the defeated ant colony. When the eggs hatch, the new ants become the "slave" ants for the colony. Some jobs of the colony include taking care of the eggs and babies, gathering food for the colony, and building the anthills or mounds.



Ants

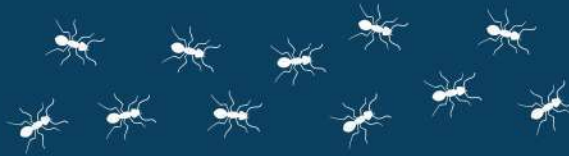


The bulldog ant is considered the most dangerous ant in the world. They live in Australia and are very aggressive. When they attack, they will both bite and sting at the same time. Their venom can kill a human in 15 minutes!



Africa's safari ants don't live in nests. The colony marches around hunting for food. When they find their prey, they swarm around it and attack. They even attack and kill small animals. A colony of these ants can eat up to 500,000 prey animals every day. In fact, these ants will eat and destroy anything that may be in their way.

Ants



The fire ant is one of the most aggressive types of ants. If you disrupt these ants, they will swarm and release a pheromone that makes more ants want to attack. These ants also have an extremely painful sting but are not deadly to humans.

Scientists believe that the bullet ant has the most painful bite of any ant species in the world, and the name “bullet ant” comes from the fact that the bite is as painful as a bullet wound. This ant is usually found in South America, and if it wasn't bad enough that the bite was extremely painful, the pain of the bite will last for up to 24 hours.



Top: fire ant
Bottom: bullet ant



Let's do
Grammar!

(be) supposed to

We use **(be) not suppose to + infinitive** to state things in the negative form.

1. I **am not supposed to play** video games after school.

2. It **is not supposed to snow** this week.

3. They **are not supposed to talk** on the phone in this building.



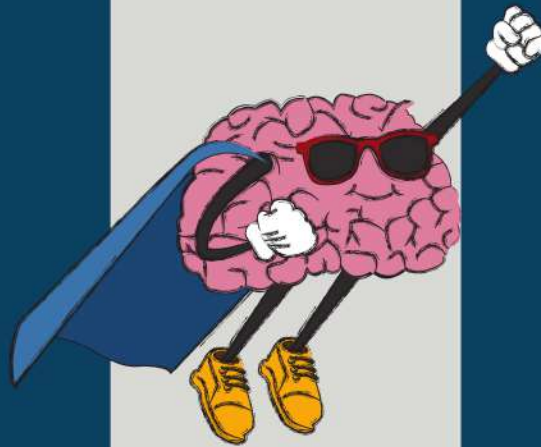


Phonics

Phonics

We add the prefix **"im"** and **"in"** to the front of words to mean **"not."**

immoderate
immortal
impatient
imprecise
imbalanced
immaculate
imperfect



inconvenient
indefinite
independent
inadequate
insane
inexpensive
invalid

Super English

See you
Next time!

