

关于施密特

施密特电梯有限公司引进德国先进设备，旨在将德国先进的电梯技术、严谨的制作工艺和科学管理理念融入中国电梯行业，为中国城市发展注入强劲的动力。

施密特电梯工厂位于重庆市大足区高新技术产业开发区，紧邻中国西部主动脉——渝蓉高速。公司占地面积约150亩，拥有现代化电梯研发制造基地，年生产能力达10000台，最高测试速度达8m/s。

自成立以来，施密特始终秉承德国一丝不苟的设计生产理念，为全球市场提供各类电扶梯产品，同时可提供完善的加装电梯和更新改造解决方案，提升城市人居生活品质。目前，公司已在中国各省市自治区建立了四十多家分公司，同时在巴西、美国、南非等十几个国家和地区设立了服务网点。

施密特电梯有限公司 Schmidt Elevator Co., Ltd.

地址：重庆市大足区高新技术产业开发区
Add: Dazu High-tech Industrial Development Zone, Chongqing
电话 Tel: 023-43450000

全国服务热线：400-999-6525

E-mail: smt@smtelev.com
<http://www.smtelev.com>

本书为一般信息出版物，我们保留随时更改产品设计和说明的权利，本书的任何字句，无论其字面意思或含义，对于任何产品及产品的用途和质量，或者任何购销合同条款的表述与更改均不承担任何责任。

This publication is for general informational purposes and we reserve the right at any time to alter product design and specification. No statement of fact should be construed as a warranty or condition, express or implied, as to any production, its fitness for any particular purpose of quality, or any modifications or representation of the terms of any purchase agreement.

Copyright © 2021 Schmidt Elevator Corporation 版权所有



扫描二维码关注
微信公众号



扫描二维码关注
公司网站

2021年11月印刷
Printed in November 2021



SE4000-G 载货电梯
SE4000-G Freight Elevator

SE4000/N-G 无机房载货电梯
SE4000/N-G Machine Roomless Freight Elevator

SE4000-D 杂物电梯
SE4000-D Debris Elevator

承启德国，助力中国
Chaintech Germany,
Boosting China

产品科技

Product technology

精益求精 追求卓越
Excellence and excellence

专业的轿厢

加倍坚固的轿底能可靠承受各类货物，高精度的称重开关严格控制载重以防止超载发生意外，地面采用防滑花纹钢板，即使被油渍污染也能产生足够的摩擦力防止人员滑倒或货物滑动。

Professional car

Double solid sedan at the end of reliable withstand all kinds of goods, precision weighing switch to strictly control the load in order to prevent overloading of accidents; on the ground with non-slip tread plate, he incurs so that grease pollution also can generate enough friction to prevent persons slipping or cargo slide.

高效矢量电梯专用变频器

应用了高性能电流矢量控制和绝对值编码器，实现高性能无传感器的其中转矩补偿功能，使电梯乘坐更加舒适；电梯曳引机可进行停止型学习，电梯的维护更加简单方便；自动转矩提升功能可以轻松应对电梯的各种负载。

High effect elevator vector inverter

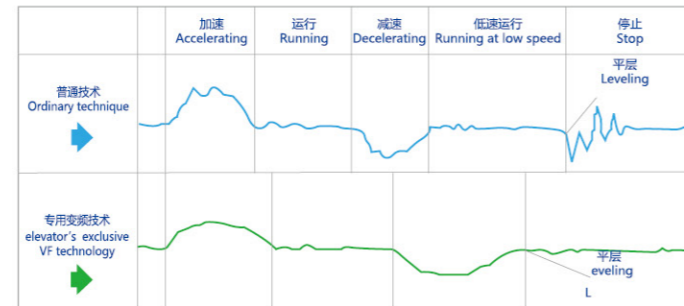
Application of high performance current vector control and absolute encoders, high-performance sensorless torque compensation function which make the elevator ride more comfortable; elevator traction machine can be stopped based learning, more simple and convenient elevator maintenance; automatic transfer torque boost function can easily cope with a variety of load lift.

现实平稳舒适

采用施密特载货电梯专用变频技术减少电梯运行中振动、摇晃。加减速平稳，实现搭乘平稳舒适。

Realizing stability and comfort

Employing Schmidt freight elevator's exclusive VVVF technology to reduce the vibration and shaking during the movement of the elevator, achieving stable and comfortable experience for the passengers.



有齿轮曳引机

A gear traction machine

技术成熟，可靠性高
持久耐用
运行平稳
坚固耐用

Mature technology, high reliability
Fine durability
Smooth running
Firm and durable



永磁同步无齿轮曳引技术

静音：由于采用进口高精度轴承，且电机转速很低，机房噪声很低。
节能：与传统的有齿轮曳引机相比约节能 40%。
环保：不需润滑油，不存在油泄漏，几乎不需要维护，利于环保。
高效：综合系统总效率大约为 85%，即使在载荷很大的情况下，效率也几乎恒定不变。



Permanent magnet synchronous and gearless traction machine

Mute: As it applies the imported high-precision bearing, and the motor rotating speed is very low, therefore it gets extremely low noise in machine room.
Energy-saving: Compared with the traditional geared traction machine, it saves about 40% of the energy.
Environmental protection: It needs no lubricating oil. Oil leakage does not exist. It is maintenance-free. It is good for environment-protection.
Effective: Total efficiency of comprehensive system is about 85%. Even under the condition of very big load, it gets almost constant efficiency.



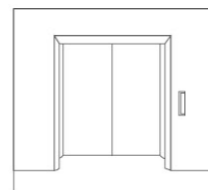
载货电梯

Freight elevator

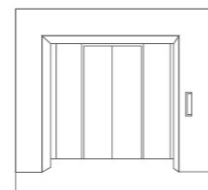
举重若轻, 胜任有余
It can competently bear heavy loads

施密特载货电梯利用微机控制技术, 采用高强度的型材设计制造的轿厢, 可在各种恶劣环境下进行货物运输的工作。安全可靠、结构强度高、经久耐用、运行平稳、开门距大、性价比高等优点使施密特货梯成为工厂、仓储、百货商城、物业中心等单位运输货物的理想选择。

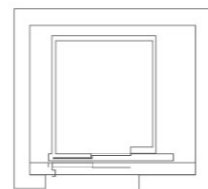
Schmidt freight elevators apply micro-computer control technology. It uses high intensity cars that have been designed and manufactured by section materials. It can transport the freight under various awful conditions. Schmidt freight elevator is your ideal choice in the factory, warehouse, department store, shopping center, housing property management center etc. because of its safe; durable and reliable properties, high structural strength, smooth operation, large door opening distance, high cost performance and so on.



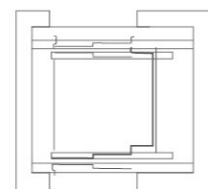
旁开双折门
Two panel sliding door



中分双折门
Center-opening & double-folded



单通门
Single way door



双通门
Double way door

大宽度开门, 大自由进出

为方便大体积货物的自由进出, 施密特载货电梯系列产品均采用多折式轿厢结构, 让轿门打开可达到最大宽度。

Large width door opening, free entry/exit

For the convenience of free entry/exit of large bulk freight, Schmidt freight elevator series apply multi-folded car structures. It can reach maximum width while opening the car door.

多种开门方式

为了满足用户的不同进出要求, 施密特载货电梯有旁开双折门、中分双折门、单通门、以及双通门四种开门方式供选择, 与工厂、仓储、百货商场、物业中心等建筑物结构灵活匹配。

The multiple door opening modes

In order to satisfy different entry/exit requirements from vast users, Schmidt freight elevator offers four door opening modes of side opening, center opening double-folded door, one-way door opening, opposite door opening. It can flexibly match with the factory, warehouse, department store, shopping center, housing property management center etc.



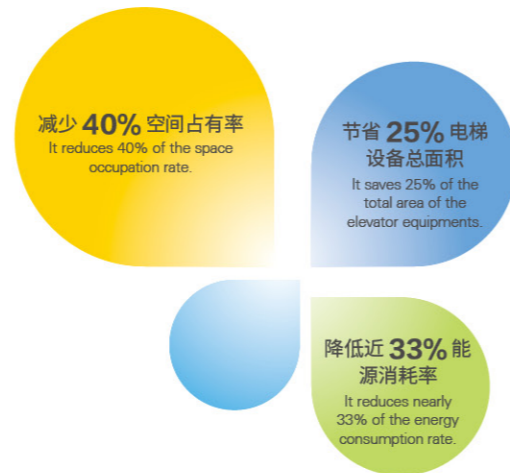
无机房载货电梯

Machine roomless freight elevator

以“无”胜“有”，为建筑提供无限可能
Infinite possibility for vast constructions

施密特无机房货梯，深谙节能降耗理念，不仅节约建筑面积，且提高设计自由度，充分体现绿色低碳。与同等载重量级别的带机房货梯相比，节约电能 25%，节约建筑面积 10%。

Schmidt machine roomless freight elevator knows very well of the energy-saving and loss-reducing ideas. It not only saves the building area, but also increases design freedom extent, It gives full play of green low-carbon. Compared with same load level freight elevator with machine room, it saves 25% of the electric energy and 10% of the building area.



轻松融入建筑

施密特无机房载货电梯只需井道，无需机房，能为建筑设计带来更多的自由。

Easily merges with vast constructions

Schmidt machine roomless freight elevator only needs a well without machine room. It brings about more design freedom to vast buildings.

应用场合广泛

与传统有机房载货电梯相比，施密特无机房载货电梯应用场合广泛，更适用于现代社会的垂直交通领域。

Extensive application occasions

Compared with the traditional freight elevator with machine room, Schmidt machine roomless freight elevator has the more extensive application occasions. It better suits the vertical transport field in modern societies.

安装简易高效

在电梯应用中，安装难易也是影响货运条件的重要因素。施密特无机房载货电梯能为客户提供高效易行的安装方案，保证建筑工程的正常进度。

Easy and effective installation

Easy installation it vital for freight transport in the elevator application. Schmidt machine roomless freight elevator provides the customers with easy and effective installation plans. It ensures normal progress of the construction projects.



汽车电梯

Automobile elevator

在升降中宠爱你的汽车
It favors your car in up/down motion

继承德国先进的汽车升降技术，根据汽车产品的特殊性而专门设计，解决了传统汽车电梯噪音大、不稳定的技术障碍，凭借美观的外型、简便的操作方式，和占地空间小、空间利用率高、适用范围广的优点，成为新一代汽车电梯的典范。

It inherits the advanced German car lifting technology. It has been specially designed according to particularity of car products. It solves the unstable technical barriers of large noise to traditional car elevators. It is backed by the attractive outline, convenient operation mode, little sharing space, high utilization rate of the space, wide application range. It becomes a model example of new generation car elevator. Meanwhile it is convenient for operators inside and outside the elevator car.

独特显示系统

专门的电路控制及显示系统，既方便轿内司机，又方便轿外候梯的司机。

Special display system

Special circuit control and display system is convenient for the drivers inside/outside the car.

安全导向装置

轿内地面设有安全导向装置，保证了电梯及汽车的安全。

Safety guide device

Safety guide device sets in the car ground to ensure fine security of both the cars and the elevators.



可以前后开门 (可选)

电梯轿厢设有前后开门，更方便了汽车进出轿厢和安全。

Front/rear door opening are available (optional)

The elevator car sets front/rear door opening which is more convenient for the safety sector and for the cars to enter into/exit from the elevator cars.



双操纵按钮箱 (标配)

轿厢内设有两只操纵箱按钮，司机无须走出汽车，就可以操纵电梯。

Dual operation buttons box (standard)

There are two operation box buttons in the car. Therefore the driver can operate the elevator in the car without stepping out of it.



杂物货梯

Debris elevator

小空间蕴藏大能耐

Small space contains a great ability

采用工业电脑 (PLC) 或微机控制, 品种规格齐全, 结构新颖, 制造精良, 具有安全可靠、运行平稳、操作方便, 轿厢和厅门采用优质发纹不锈钢板制作, 豪华美观, 广泛适用于宾馆、饭店等, 深受广大用户欢迎。

Using industrial computer (PLC) or computer control, complete specifications, novel structure, fine workmanship, with safe, reliable, stable, easy to operate the car and landing doors made of high quality stainless steel plate production lines, luxury and beauty, widely used in hotels, restaurants and other units, is popular among customers.

优越性能

- 电锁功能: 基站呼梯盒配备电锁, 用于启动和关闭电梯的控制回路;
- 运行故障保护功能: 当超出正常运行时间 10 秒内, 电梯停止运行, 以防烧坏电机;
- 故障自显示功能: 将诊断后的故障以代码形式显示;
- 故障自诊断功能: 能够诊断故障现象及原因;
- 自恢复保险功能: 控制信号回路如果短路保险自动断开, 当故障消除后保险自动接通;
- 接触器粘连保护功能: 如接触器线圈断电后接点未能断开时, 防止再次运行以保障安全;
- 呼梯应答功能: 按下呼梯按钮, 被呼梯层按钮数字指示灯亮, 到站后撤销记忆指示灯灭;
- 蜂鸣提示功能: 具有到站蜂鸣提示功能;
- 开关门状态指示功能: 电梯运行到站后开启层门, 数码显示开门状态并提示此梯在本层使用;
- 运行方向显示功能: 运行方向由上下行发光箭头显示;
- 层楼显示功能: 电梯运行所到楼层由数码显示;

The advantageous performances

- Electric lock function: call the base station is equipped with electric locks ladder box, used to start and shut down the elevator control circuit;
- Run fault protection function: When outside the normal run time of 10 seconds, the elevator stopped, to prevent burn out the motor;
- Fault self-display: the diagnosis of faults in code display;
- Self-diagnostic capabilities: the ability to diagnose and Causes;
- Restoring self-insurance function: if the control signal circuit short-circuit the insurance automatically disconnect when the failure to eliminate auto-connect after the insurance;
- Contactor adhesion protection: If contactor coil power disconnected contacts unable to prevent the re-run to ensure safety;
- Call ladder response function: Press the call elevator button, the call number elevator floor button light, light off the station after the revocation of memory;
- Beeper function: with the arrival Beeper function;
- Door switch status indicator: level elevator door open after running the station, digital display and prompts the ladder open state in this layer;
- Running direction of the display: the direction of the arrow up and down the line-emitting display;
- Floor display: run to the elevator floor by the digital display;



轿厢装饰和设计

Car decoration and design



S-H001

标准配置
Standard collocation

吊顶	涂装钢板
轿壁、轿门	涂装钢板 (贯通门)
操纵箱面板	发纹不锈钢
地板	花纹钢板
Ceiling	Painted steel
Car wall, car door	Painted steel (opposite door)
COP	Hairline stainless steel
Floor	Checkered steel



S-H002

选择配置
Optional collocation

吊顶	发纹不锈钢
轿壁、轿门	发纹不锈钢
操纵箱面板	发纹不锈钢
地板	花纹钢板
Ceiling	Hairline stainless steel
Car wall, car door	Hairline stainless steel
COP	Hairline stainless steel
Floor	Checkered steel

可选喷粉颜色

Optional dusting color



S-PF801 象牙黄 Ivory yellow	S-PF802 天空灰 Sky gray	S-PF805 星云黄 Nebula yellow
------------------------------------	--------------------------------	-------------------------------------

可选地板

Optional floor



花纹板 Checked plate	不锈钢花纹板 (有償) Stainless steel checked plate (optional)
----------------------	---

操纵箱

Control operate panel



COP101

标准配置
Standard configuration

标配按钮
Standard button



IB-01
不锈钢按钮
Stainless steel button

选配按钮
Optional button



IB-02
不锈钢按钮
Stainless steel button

操纵箱可选材质 (有償):
镜面不锈钢 / 镀钛不锈钢
Control box operation material (charged):
mirror stainless steel / titanium-plating stainless steel

召唤指示器
Calling indicator box



LOP101

有底盒标配
Standard bottom case



LOP102

无底盒标配
Standard none bottom case

图片系电脑绘制, 可能与实际图有不同, 具体以实物为准。
The computer-drawn pictures are only for reference.

可选厅门

Optional landing door



旁开式
Side opening type

标准配置
门套: 涂装钢板 (颜色可选)
层门: 喷涂钢板
地坎: 铁制
Standard
Jamb: Painted steel(optional color)
Landing door: Painted steel
Sill: Iron-made



中分双折式
Center-opening & double-folded type

选择配置
门套: 涂装钢板 (颜色可选)
层门: 喷涂钢板
地坎: 铁制
Optional
Jamb: Painted steel(optional color)
Landing door: Painted steel
Sill: Iron-made

图片系电脑绘制, 可能与实际图有不同, 具体以实物为准。
The computer-drawn pictures are only for reference.

电梯功能

Function table

标准功能 Standard function

功能名称 Function name	功能说明 Function elucidation
电梯变频驱动 VVVF drive	精确调整电动机转速，令电梯启动、运行、停止时的速度曲线平稳、圆滑、获得良好的舒适感。 Motor rotating speed can be precisely adjusted to get smooth speed curve in lift start, travel and stop and gain the sound comfort.
门机变频驱动 VVVF door operator	精确调整电动机转速，使门机的开启、关闭更轻柔灵敏。 Motor rotating speed can be precisely adjusted to get the more gentle and sensitive door machine start/stop.
独立运行 Independent running	通过动作开关，使电梯不响应外召，仅响应轿内指令。 The lift can not respond to outer calling, but only respond to the command inside the car through the action switch.
自动不停站通过 Automatic pass without stop	当轿内挤满乘客或负载接近预定值，为保持最大运行效率，该轿厢将自动越过召唤层站。 When the car is crowded with the passengers or the load is closeto preset value, the car will automatically pass the calling landing in order to keep maximum travel efficiency.
开门时间自动调整 Automatically adjust door opening time	按照层站召唤或轿厢召唤的区别，自动调整保持开门时间。 Door-open time can be automatically adjusted according to the difference between landing calling or car calling.
本层重开门 Reopen with hall call	关门途中，可以按本层站召唤按钮使门重新开启。 In the door shutting process, press reopen with hall call button can restart the door.
即时关门 Express door closing	电梯停站开门到位时，按下关门按钮，门立即被关闭。 When the lift stops and opens the door, press door-shut button, the door will be closed immediately.
停梯开门 Car stops and door open	电梯减速平层，直到完全停稳后才开门。 The lift decelerates and levels, the door only opens after the lift comes to a complete stop.
轿厢到站钟 Car arrival gong	装于轿顶的电子钟的钟声告知候梯的乘客电梯已到站。 Arrival tong in the car top announces that the passengers arrive.
指令登记删除 Command register cancel	如按错了轿内楼层指令按钮，只要把同一按钮连按两次，就可取消已登记指令。 If you press the wrong floor command button in the car, twice continuous pressing of same button can cancel the registered command.
光幕保护 Photocell protection	门开启和关闭期间，用覆盖整个门高度的红外光探测乘客和物体的门保护装置。 In the door open and shut period, infrared light that covers the whole door height is used to probe the door protection device of both the passengers and objects.
指定停靠 Designated stop	由于某种原因，电梯在目的层无法开门，电梯将关门运行至下一指定层楼。 If the lift can not open the door in the destination floor out of some reason, the lift will close the door and travel to the next designated floor.
超载停梯 Overload holding stop	轿厢超载时，鸣响蜂鸣器并停止于该层站。 When the car is overload, the buzzer rings and stops the lift in the same floor.
启动保护控制 Start protection control	电梯启动后在指定的时间内，没有离开门区，电梯停止运行。 If the lift does not leave door zone within the designated time after it gets started, it will stop the operation.
检修操作 Inspection operation	当进入检修状态时，轿厢以低速点动运行。 When the lift enters into inspection operation, the car travels at inching running.
故障自诊断 Fault self-diagnosis	控制器可记录最新的62个故障信息，以便快速排除故障，迅速恢复电梯运行。 The controller can record 62 latest troubles so as to quickly remove the trouble and restore the lift operation
电梯门重复开关 Repeated door closing	有时因阻碍或干扰，电梯门未能关闭，电梯门会重复打开或关闭，直到杂物被清除。 If the lift can not close the door due to certain obstacle or interference, the lift will reopen or re-shut the door until sundries are eliminated.
上下越层及上下极限保护装置 Up/down over-run and final limit protection	该装置可有效地防止当电梯万一发生失控时的冲顶或撞底现象，使电梯更安全可靠。 The device can effectively prevent from the lift's surging to the top or knocking the bottom when it is out of the control. It results in the more safe and reliable lift travel.
下行超速保护装置 Down over-speed protection device	当电梯下降运行的速度超过额定速度的1.2倍时，该装置自动切断控制电源，使电机停止运转以阻止电梯超速下行；如电梯继续超速下行，其速度超过额定速度的1.4倍时，安全钳动作，强制电梯停止运行，保证安全。 When the lift downs 1.2 times higher than the rated speed, this device will automatically cut off control mains, stop the motor running so as to stop lift down at over-speed. If the lift continues to down at over-speed, and the speed is 1.4 times higher than rated speed, safety tongs act to force the lift stop in order to ensure the safety.
上行超速保护装置 Upward over-speed protection device	当电梯上行的速度超过额定速度的1.2倍时，该装置自动将电梯减速或制停。 When the lift ups 1.2 times higher than rated speed, the device will automatically decelerate or brake the lift.
轿内及层站微动指令按钮 Micro-touch button for car call and hall call	轿内操纵箱指令按钮及层站召唤按钮采用新型微动型按钮。 Novel micro-touch button is used for operation panel command button in the car and landing calling button.
轿内层楼、方向指示 Floor and direction indicator inside car	轿内显示电梯所在层楼及当前运行方向。 The car shows the lift floor location and current travel direction.
层站层楼、方向指示 Floor and direction indicator in hall	层站显示电梯所在层楼及当前运行方向。 The landing shows the lift floor location and current travel direction.

标准功能 Standard function

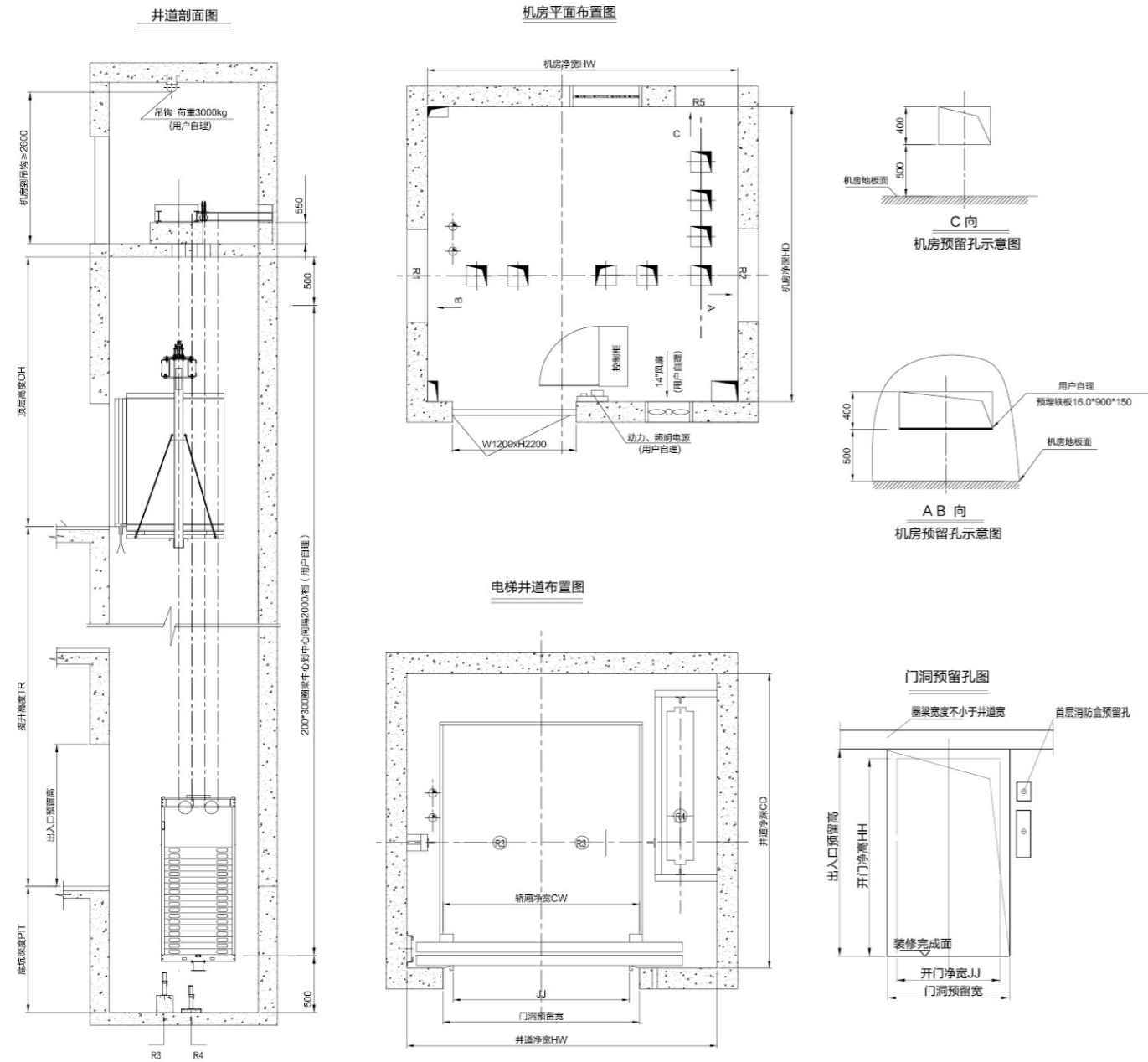
功能名称 Function name	功能说明 Function elucidation
应急照明 Emergency car lighting	停电时，自动打开轿内应急照明。 Emergency car lighting automatically activated once power failure.
五地通话 Five way intercom	通过对讲机，可让轿内、轿顶、电梯机房、井道底坑、救援值班之间通话。 Communication amid car, car top, lift machine room, well pit and rescue duty room through walkie-talkie.
警铃 Bell	紧急时，连续按下轿内操纵箱上的警铃按钮，安装于轿厢顶上的电铃会鸣响。 In emergency conditions, if bell button above car operation panel is continuously pressed, electric bell rings on top of the car.
消防返回 Fire emergency return	启动基站或监控屏上的钥匙开关，所有召唤均被取消，电梯立即驶往指定救援层站停靠，并自动开门。 If you start key switch in main landing or monitor screen, all the callings will be cancelled. The lift directly and immediately drives to the designated rescue landing and automatically opens the door.
轿厢风扇/照明自动开关 Car ventilation, light automatic shut off	在规定的时间内没有召唤或指令信号，轿厢内的风扇和照明会自动关闭，以节能。 If there is no calling or command signal within the stipulated time, the car fan and lighting will be automatically closed in order to save the energy.
防溜车保护 Anti-slip car protection	曳机机抱闸未检测到松闸电磁磁场信号，抱闸继电器不吸合，安全回路仍保持断开状态防溜车保护。 Traction machine brake disengaged electromagnetic field signal is not detected, the brake relay does not pull the safety circuit remains off state anti-slip car protection.
远程关闭 Remote shut-off	通过按钮开关，电梯可以被召唤到基站（服务完成后），并自动退出服务。 The lift can be called to main landing (after finishing the service) through the key switch and automatically exists the service.
防捣乱 Anti-nuisance	当电梯轻载时出现超过三个指令时，为避免不必要停靠，轿厢内已登记的召唤将全部自动消除。 In the light lift load, when three more commands appear, in order to avoid the unnecessary parking, all the registered callings in the car will be cancelled.

选配功能 Optional function

功能名称 Function name	功能说明 Function elucidation
停电应急平层 Leveling when power failure	正常电源断电时，充电式电池提供电梯电源，电梯驶往最近层站。 In normal power failure, the chargeable battery supplies the lift power. The lift drives to the nearest landing.
防水设计 Waterproof design	能够防止轿厢被水冲淋而损坏，提高了电梯的安全性能。 It can prevent the car from being damaged by water and improve the safety performance of the elevator.
直接停靠 Direct parking	完全根据距离原则，平层无爬行，大大提高了运行效率。 It completely accords with distance principle with no crawling in the leveling. It greatly enhances the travel efficiency.
并联功能 Duplex control	用于两台同型号电梯，通过电脑的调度来统一响应召唤信号，以最大限度地减少乘客的候梯时间，以提高运行效率。 Two sets of same model lifts can unanimously respond the calling signal through the computer dispatch. In this way, it reduces the passengers'waiting time to the greatest extent and enhances the travel efficiency as well.
语音报站 Voice announcer	在正常运行到站的情况下，利用语音装置告知乘客有关信息。 When the lift normally arrives, voice announcer informs the passengers about the relevant information.
轿厢副操纵箱 Car assistant operation box	用于大载重量电梯或候梯人群稠密大楼中的电梯，以便让轿厢内更多的乘客方便使用。 It is used in the large loading weight lifts of the lifts with crowded passengers so that more and more passengers can use the car.
IC卡功能 IC card Function	通过专用的智能输入设备，可使轿厢指令或厅外召唤锁定或接通。 The car command or hoist-way calling can be locked or connected through special Intelligent Input.
远程监控 Remote monitor	通过调制解调器和电话，可实现电梯的远程监视和控制，便于厂家和服务单位及时的了解每台电梯的运行状况，以便及时作出相应措施。 The lift long-distance monitor and control can be fulfilled through modem and telephone. It is convenient for the factories and service units to timely know the travel conditions of every lift and promptly take the corresponding measures.
轿内摄像功能 Camera function in the car	摄像头装于轿厢内监视轿内情况。 The camera is installed in the car to monitor the car conditions.

载货电梯土建示意图

Freight elevator construction parameters



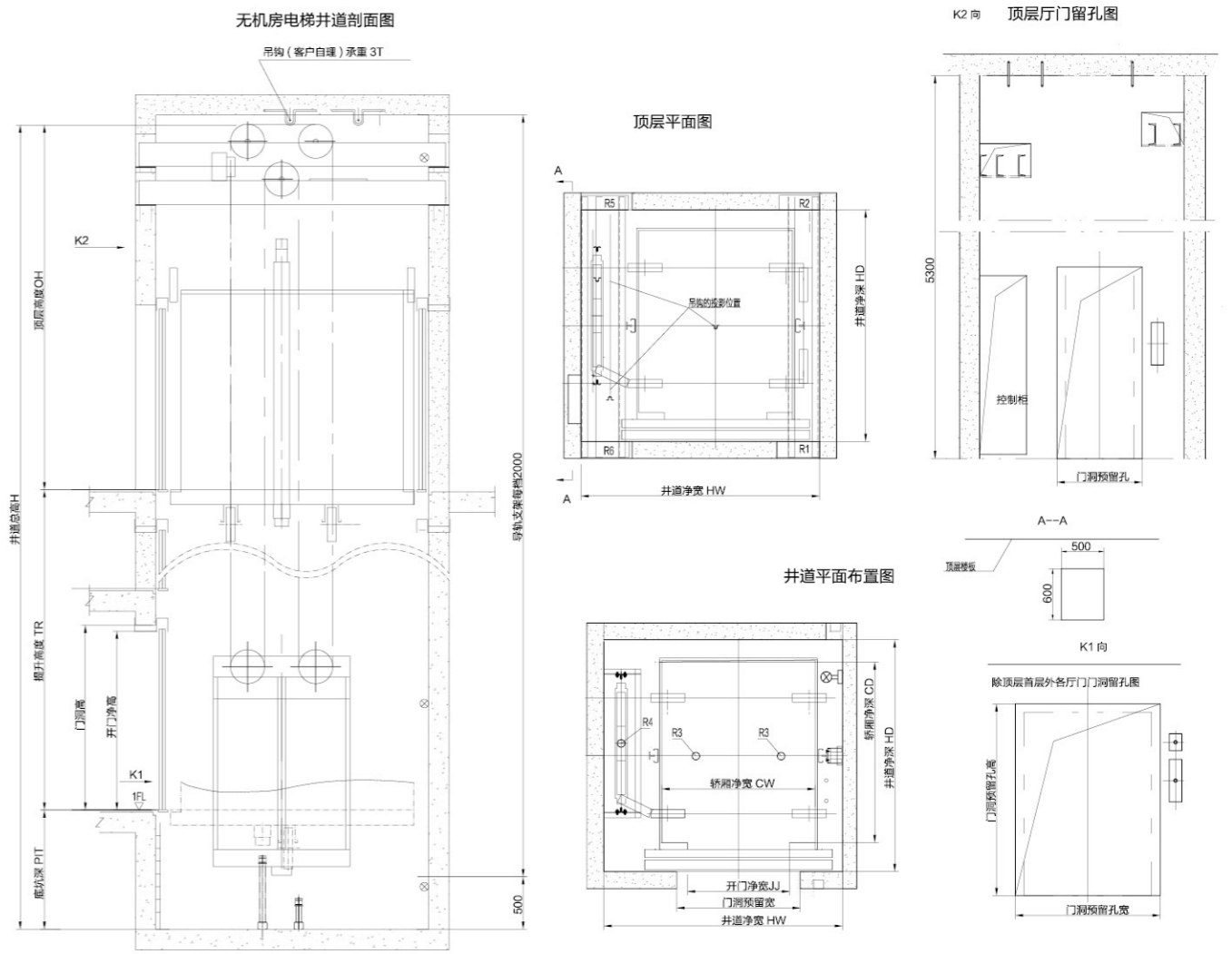
额定载重 (kg)	额定速度 (m/s)	井道尺寸 (净宽 HW×净深 HD) (mm)	轿厢尺寸 (净宽 CW×净深 CD) (mm)	开门净宽 JJ(mm)	底坑深度 PIT(mm)	顶层高度 OH(mm)	机房高度 (m)	最大提升高度 TR(m)	R1 承重 (KN)	R2 承重 (KN)	R3 承重 (KN)	R4 承重 (KN)	R5 承重 (KN)
2000	0.5	2900×2700	1900×2100	2S1600	1500	4500	2.6	23	87	109	174	134	44
2000	1	2900×2700	1900×2100	2S1600	1600	4600	2.6	45	87	109	174	134	44
3000	0.5	3200×3200	2100×2600	2CO1800	1500	4500	2.8	23	130	163	260	200	65
3000	1	3200×3200	2100×2600	2CO1800	1600	4600	2.8	45	130	163	260	200	65
5000	0.5	3800×4000	2600×3300	2CO2200	1800	5000	3	23	216	270	432	334	108
5000	1	3800×4000	2600×3300	2CO2200	1800	5000	3	45	216	270	432	334	108
10000	0.25	5100×5800	3300×5000	3CO3300	1800	5200	3.2	12	432	540	864	668	216
10000	0.5	5100×5800	3300×5000	3CO3300	1800	5200	3.2	23	432	540	864	668	216

注: 2S- 旁开, 2CO- 中分双折, 3CO- 中分三折

(本资料仅供参考, 详细参数以土建图为准)
(This information is for reference only, the detailed parameters are subject to the civil drawing)

无机房载货电梯土建示意图

Machine roomless freight elevator construction parameters



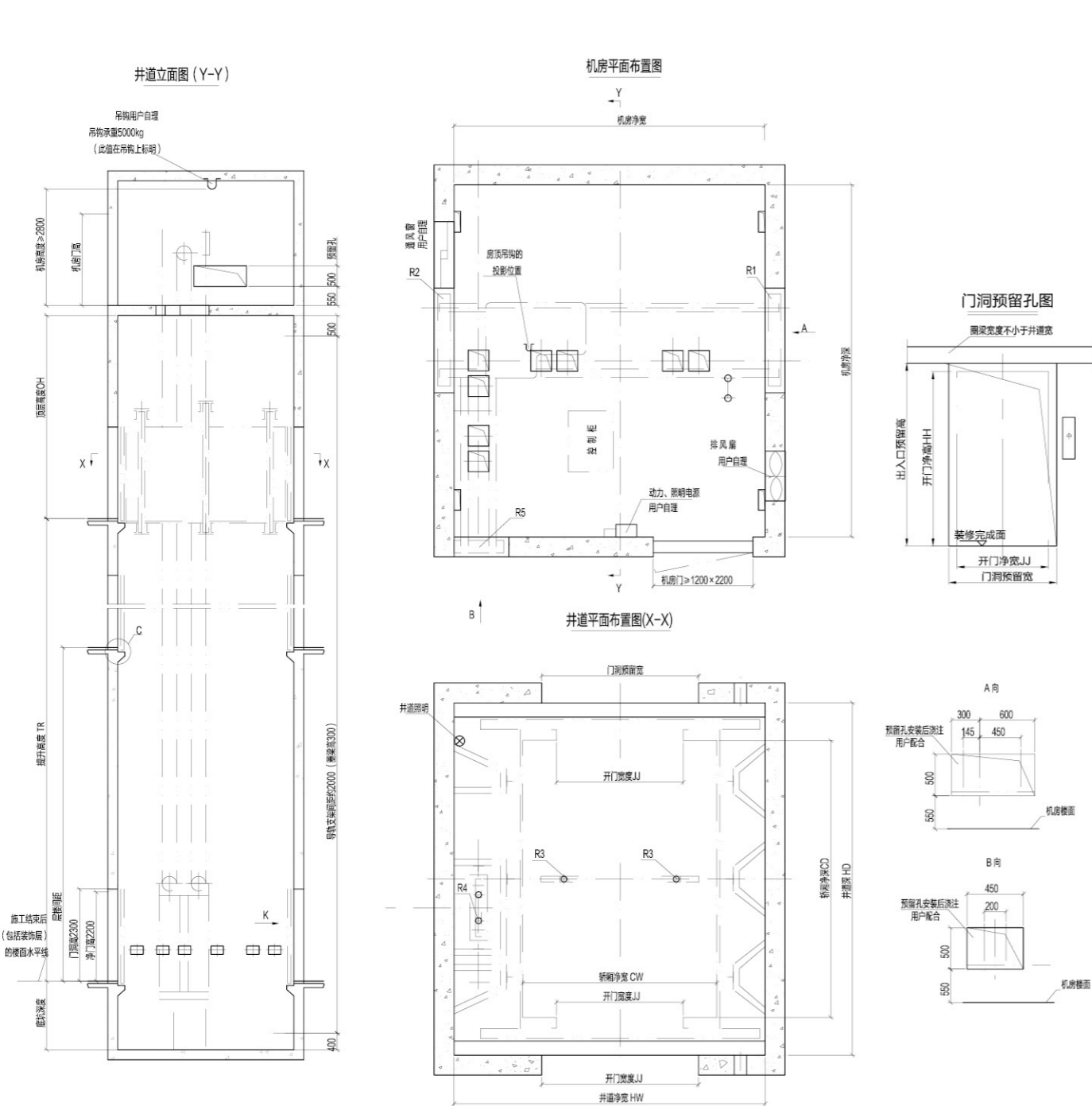
额定载重 (kg)	额定速度 (m/s)	井道尺寸 (净宽 HW×净深 HD) (mm)	轿厢尺寸 (净宽 CW×净深 CD) (mm)	开门净宽 JJ(mm)	底坑深度 PIT(mm)	顶层高度 OH(mm)	最大提升高度 TR(m)	R1 承重 (KN)	R2 承重 (KN)	R3 承重 (KN)	R4 承重 (KN)	R5 承重 (KN)	R6 承重 (KN)
1600	0.5	2900×2500	1700×1900	2S1400	1700	4800	23	69	87	138	108	97	78
1600	1	2900×2500	1700×1900	2S1400	1800	5000	45	69	87	138	108	97	78
2000	0.5	3100×2700	1900×2100	2S1600	1700	5000	23	87	109	174	134	122	98
2000	1	3100×2700	1900×2100	2S1600	1800	5200	45	87	109	174	134	122	98
3000	0.5	3400×3200	2100×2600	2CO1800	1700	5000	23	130	163	260	200	182	146
3000	1	3400×3200	2100×2600	2CO1800	2000	5200	45	130	163	260	200	182	146
4000	0.5	3600×3700	2300×3100	2CO2000	1800	5000	23	173	217	346	268	243	194
4000	1	3600×3700	2300×3100	2CO2000	2000	5200	45	173	217	346	268	243	194
5000	0.5	3900×3800	2600×3200	2CO2000	1800	5000	50	185	230	380	280	260	205
5000	1	3900×3800	2600×3200	2CO2000	1800	5000	50	185	230	380	280	260	205

注: 2S- 旁开, 2CO- 中分双折

(本资料仅供参考, 详细参数以土建图为准)
(This information is for reference only, the detailed parameters are subject to the civil drawing)

汽车电梯土建示意图

Automobile elevator construction parameters



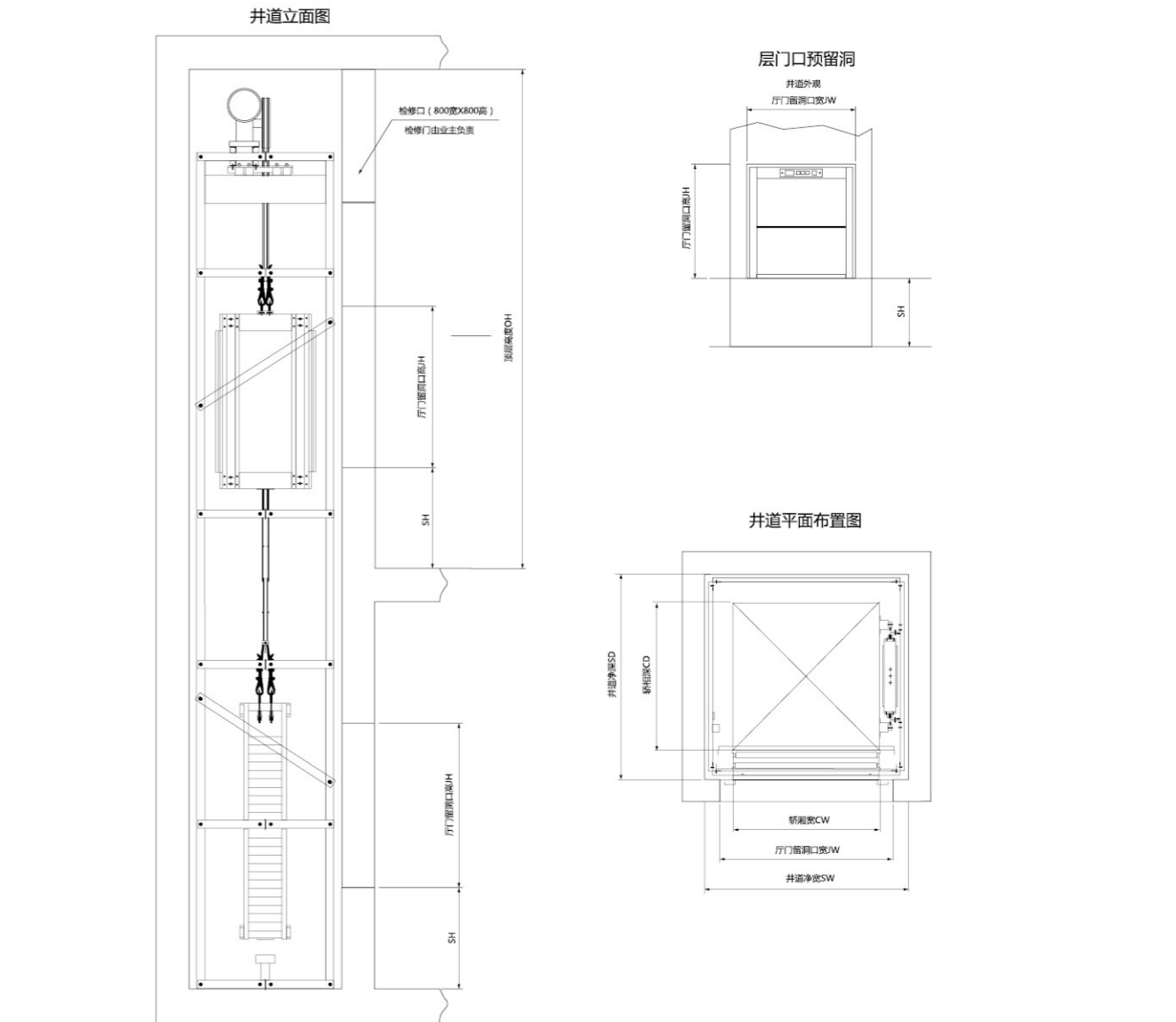
额定载重 (kg)	额定速度 (m/s)	井道尺寸 (净宽 HW×净深 HD) (mm)	轿厢尺寸 (净宽 CW×净深 CD) (mm)	开门净宽 JJ (mm)	底坑深度 PIT (mm)	顶层高度 OH (mm)	机房高度 (m)	最大提升高度 TR (m)	R1 承重力 (KN)	R2 承重力 (KN)	R3 承重力 (KN)	R4 承重力 (KN)	R5 承重力 (KN)
3000	0.25	4200×6550	2500×6000	T2500	1600	4800	2.8	12	130	163	260	200	65
3000	0.5	4200×6550	2500×6000	T2500	1600	4800	2.8	23	130	163	260	200	65
5000	0.25	4900×7550	3500×7000	T2800	1600	5000	3	12	216	270	432	334	108
5000	0.5	4900×7550	3500×7000	T2800	1600	5000	3	23	216	270	432	334	108

注: T- 中分双折贯通

(本资料仅供参考, 详细参数以土建图为准)
(This information is for reference only, the detailed parameters are subject to the civil drawing)

杂物电梯土建示意图

Debris elevator construction parameters



窗口式 (开门方式: 上下直分门)
Window type (door opening: Up / down bi-parting door)

规格 Size	载重量 Load (kg)	种类 Type	轿厢尺寸 Car Size			井道尺寸 Shaft size		顶层高度 Top layer height	地坑深度 Pit depth	门口预留尺寸 Preserved door opening size		
			宽 Width CW	深 Depth CD	高 Height CH	SW	SD			JW	JH	SH
S12-100	100	窗口式	600	600	800	920	920	≥ 3000	-	750	1050	65
S12-100	100	窗口式	600	700	800	920	1020	≥ 3000	-	750	1050	650
S12-100	100	窗口式	700	700	800	1020	1020	≥ 3000	-	850	1050	650
S12-200	200	窗口式	800	800	800	1120	1120	≥ 3000	-	950	1050	650
S12-250	250	窗口式	1000	1000	1000	1320	1280	≥ 3500	-	1200	1250	650

落地式 (开门方式: 旁门折叠门)
Floor type (door opening: Side opening collapsible door)

规格 Size	载重量 Load (kg)	种类 Type	轿厢尺寸 Car Size			井道尺寸 Shaft size		顶层高度 Top layer height	地坑深度 Pit depth	门口预留尺寸 Preserved door opening size		
			宽 Width CW	深 Depth CD	高 Height CH	SW	SD			JW	JH	SH
S12-200	200	落地式	800	800	1000	1120	1100	≥ 2800	≥ 700	1060	1250	-
S12-200	200	落地式	800	900	1000	1120	1200	≥ 2800	≥ 700	1060	1250	-
S12-200	200	落地式	900	900	1000	1220	1200	≥ 2800	≥ 700	1160	1250	-
S12-250	250	落地式	1000	1000	1000	1320	1280	≥ 2800	≥ 700	1260	1250	-
S12-300	300	落地式	1000	1000	1170	1320	1280	≥ 3000	≥ 700	1260	1420	-

(本资料仅供参考, 详细参数以土建图为准)
(This information is for reference only, the detailed parameters are subject to the civil drawing)