

THE WILLOW



*Salix asperifolia* 'Thrysoomai'  
Weeping willow  
20-25m  
Sun  
Deciduous  
Fast growing rate

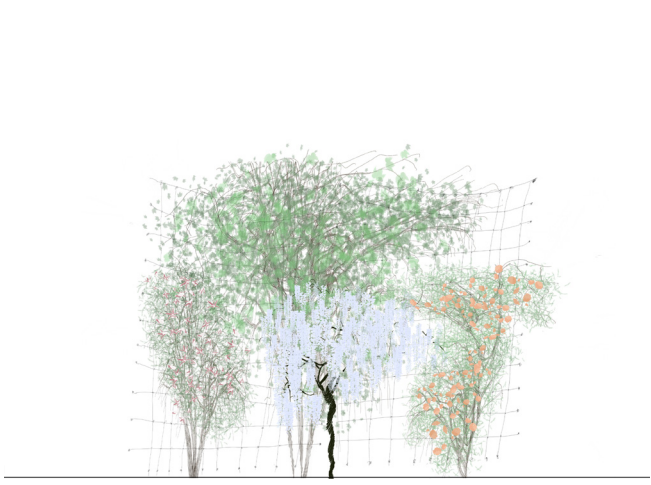
FASE 1: 5 YEAR OLD TREE PLANTED

Height: 10m  
Width: 12m  
Growth rate: 2.5m a year

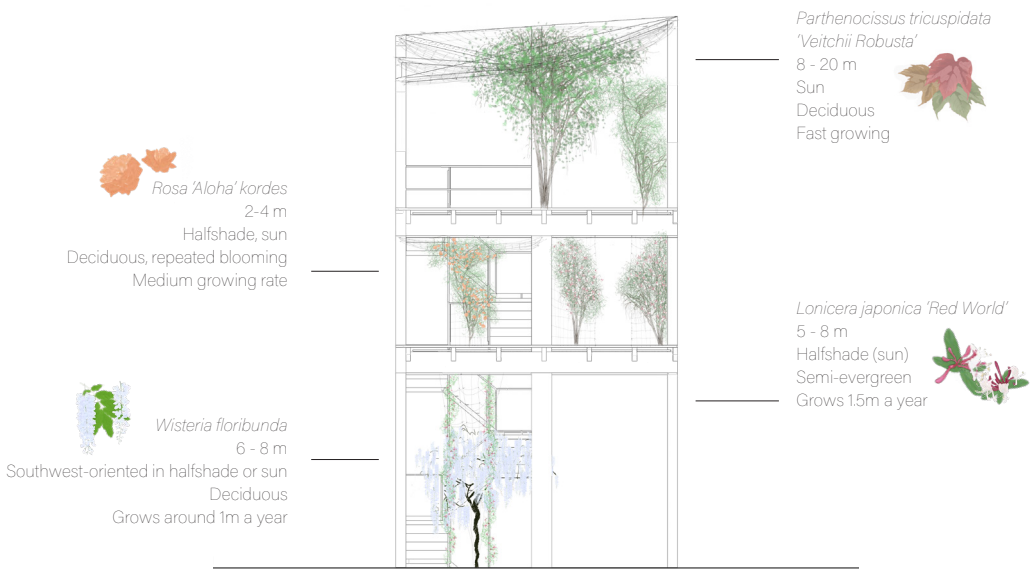


This typology houses long stretches of uninterrupted time for quiet and private solo working

THE CREEPER

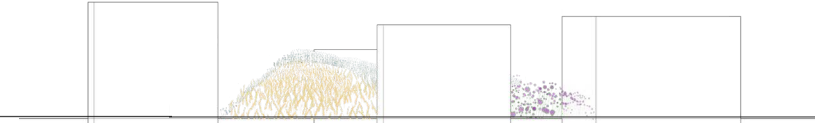
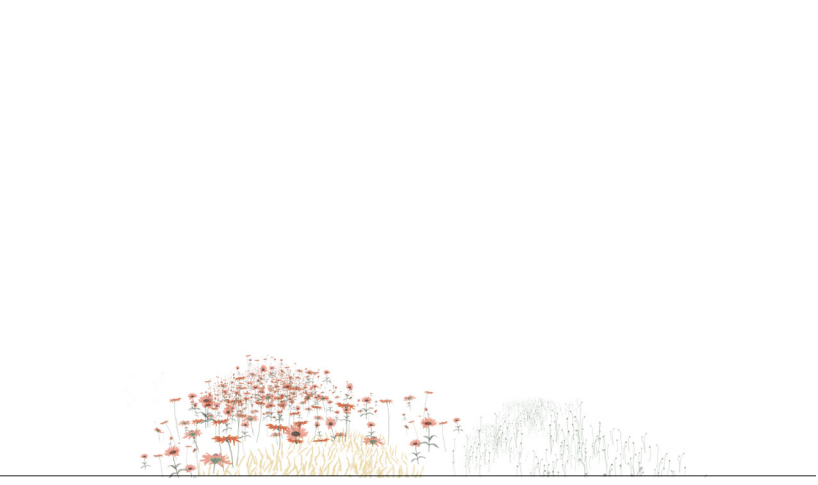


FASE 1: 2 YEAR OLD SPECIES PLANTED



This emerging space that boosts creativity is designed along with the notion that inspiring people thrive on inspiring environments.

THE VALLEY



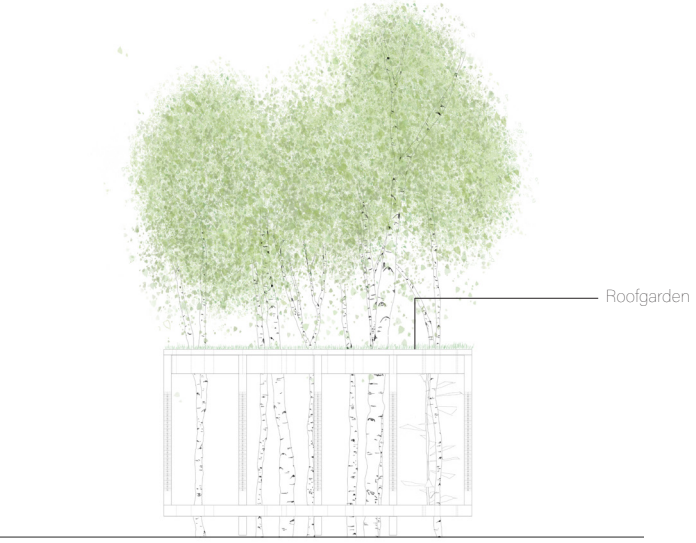
This typology encourages working in small multidisciplinary teams that make it easier to speak up and make decisions faster. Amongst others, these cabins can also be used as conference rooms or rentable spaces for freelancers and short-term projects.

THE FOREST

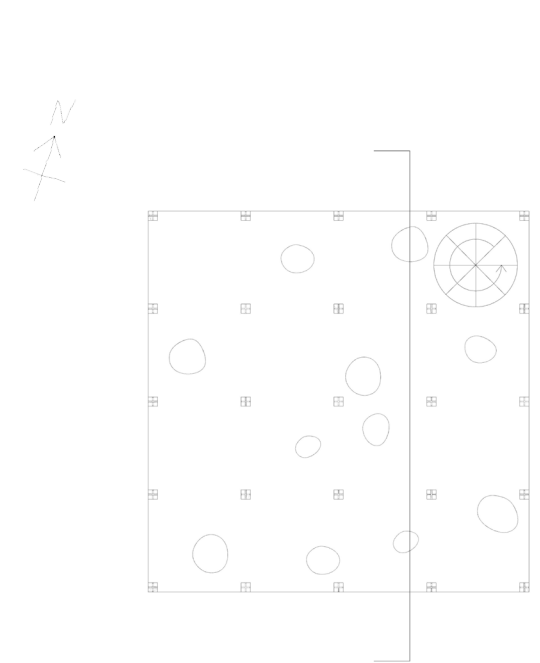
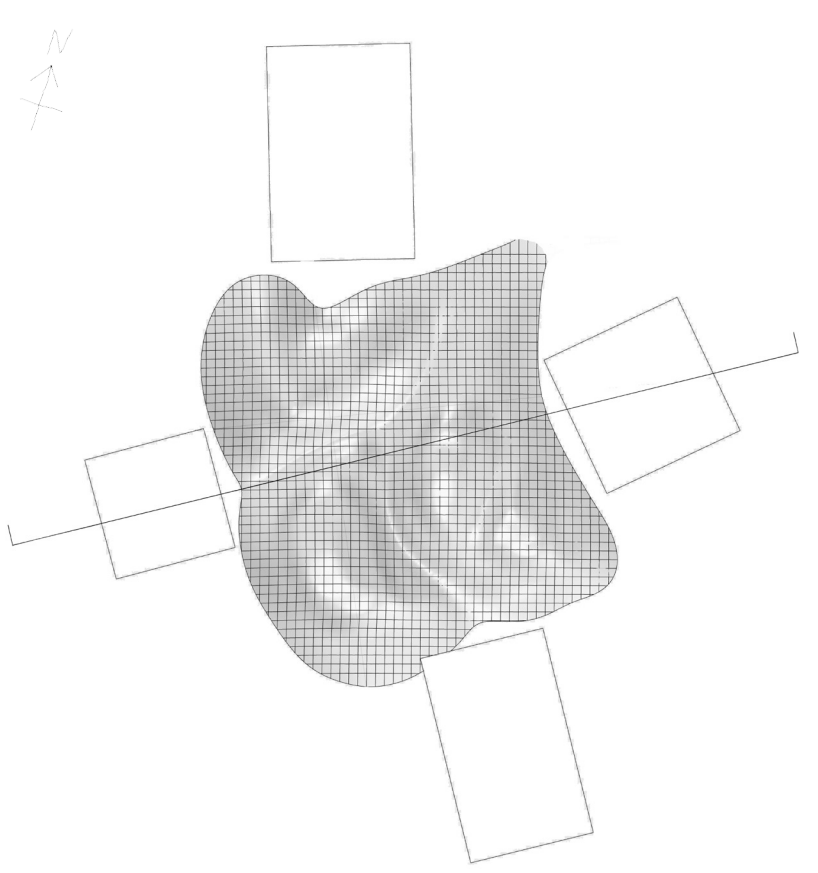
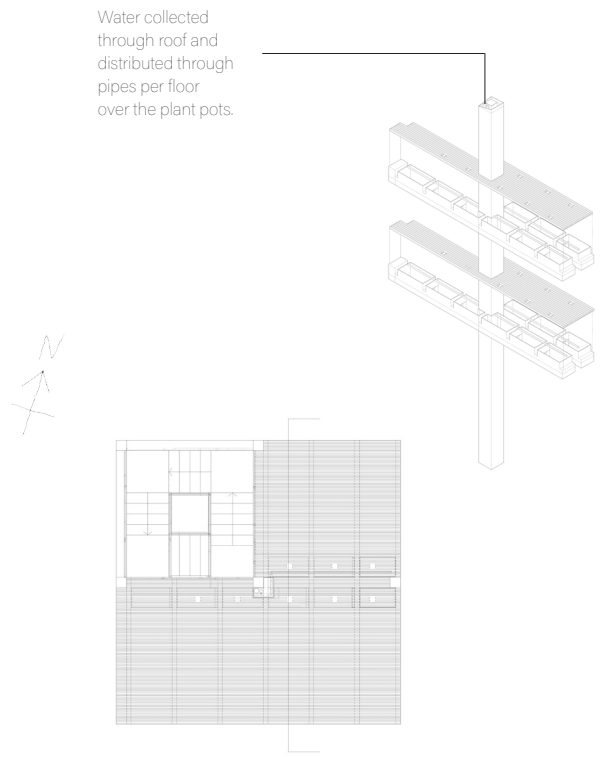
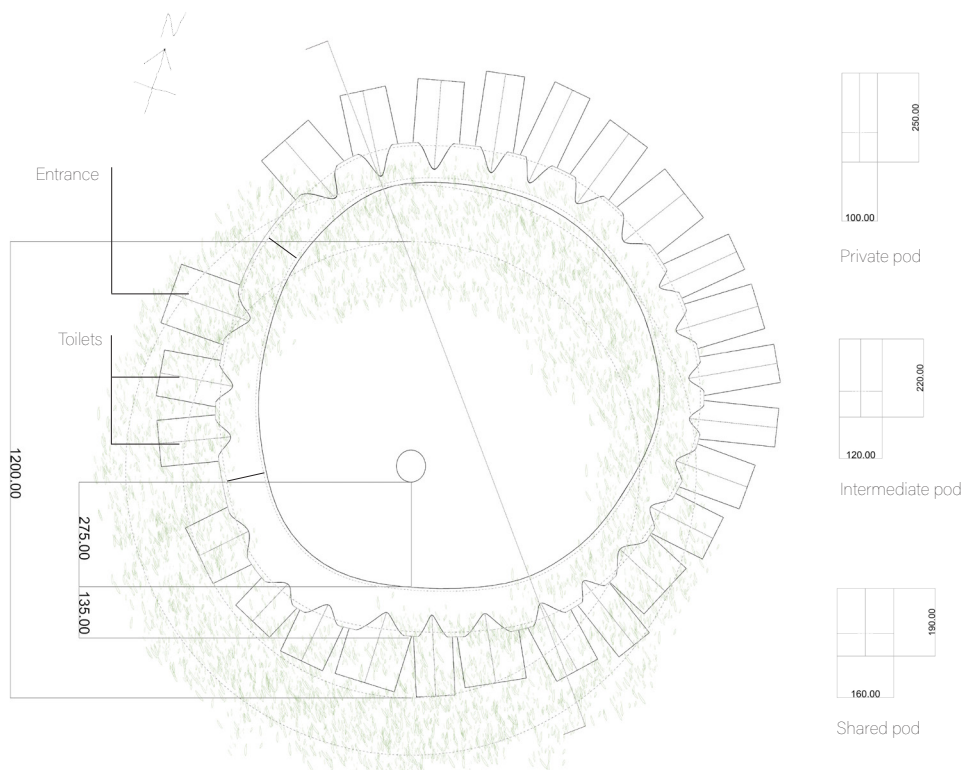


FASE 1: 5 YEAR OLD TREES PLANTED

Height: 8m  
Growth rate: 0.9m a year



The Forest houses a space for individuals and groups to interact. It encourages serendipitous encounters and social engagement.

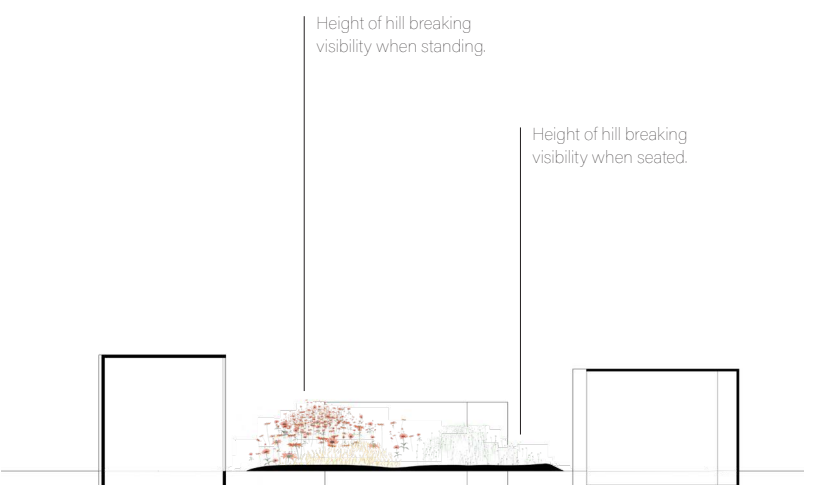
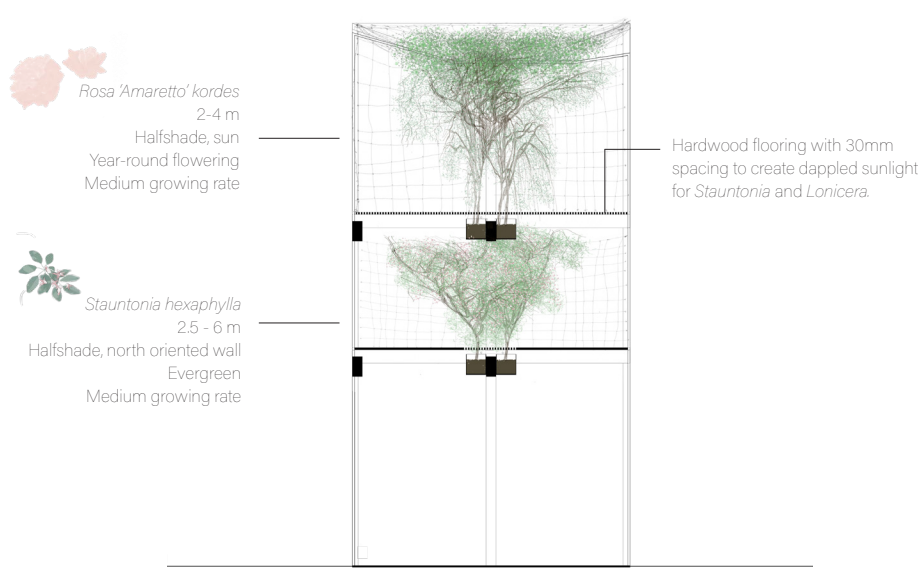


FASE 2: AFTER 2 YEARS

Height: 15m  
Width: 15m

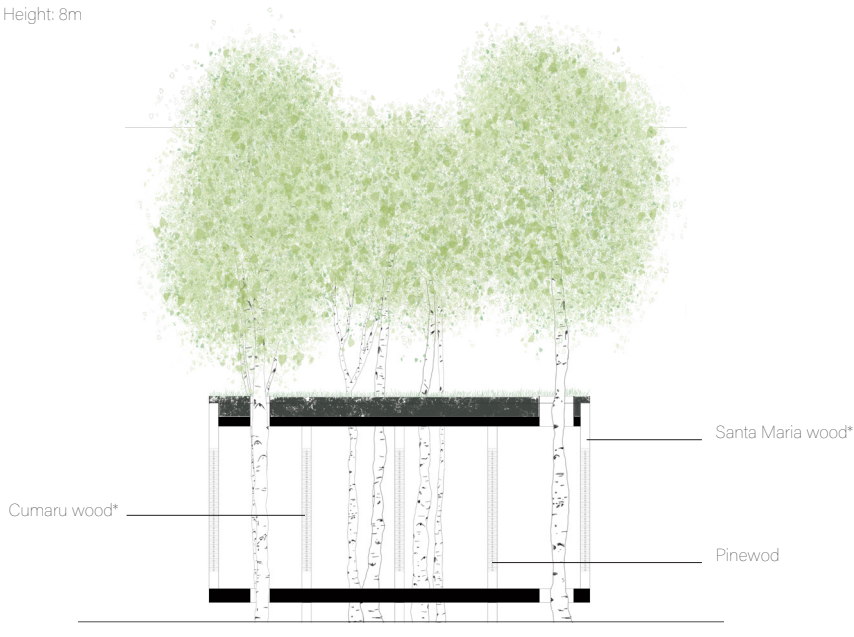


FASE 2: AFTER 2 YEARS

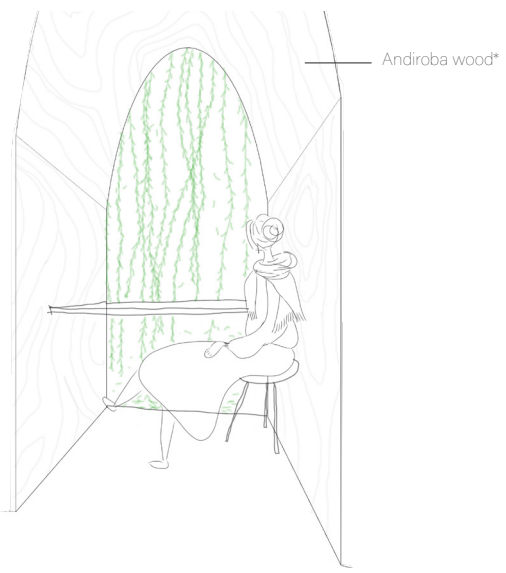


FASE 2: AFTER 2 YEARS

Height: 8m



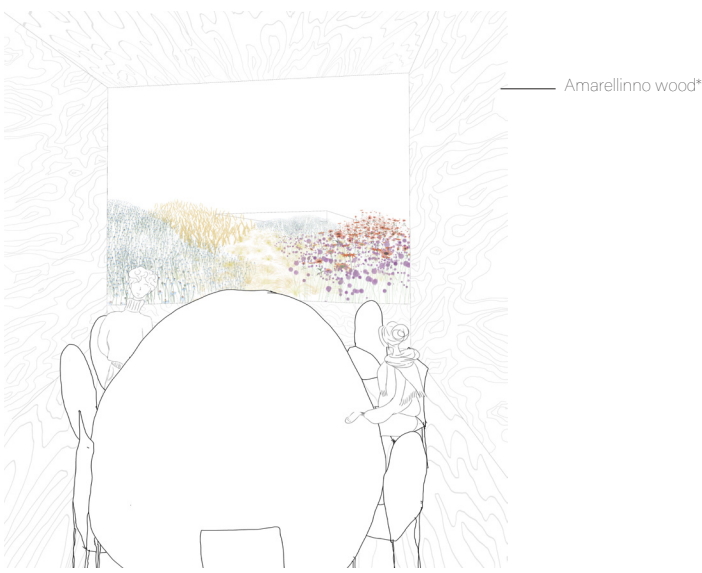
The timber species used for the pillars reflect the colour palette of the *Paper Birch's* trunk.



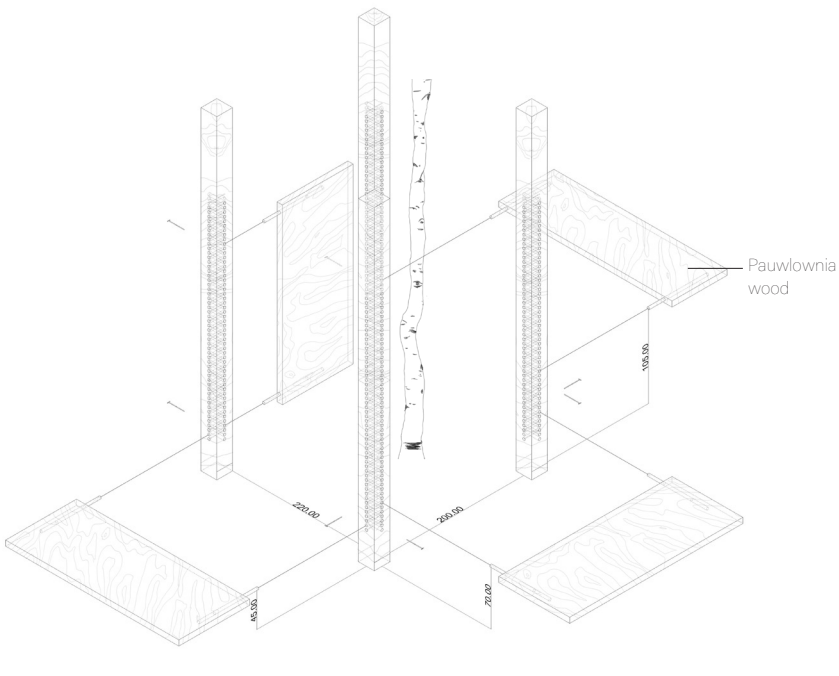
the branches of the Weeping willow create shade in the south facade. In summer its leaves form a thick curtain blocking the sun, while in winter they minimize their presence, leaving a drapery of privacy with their slender branches.



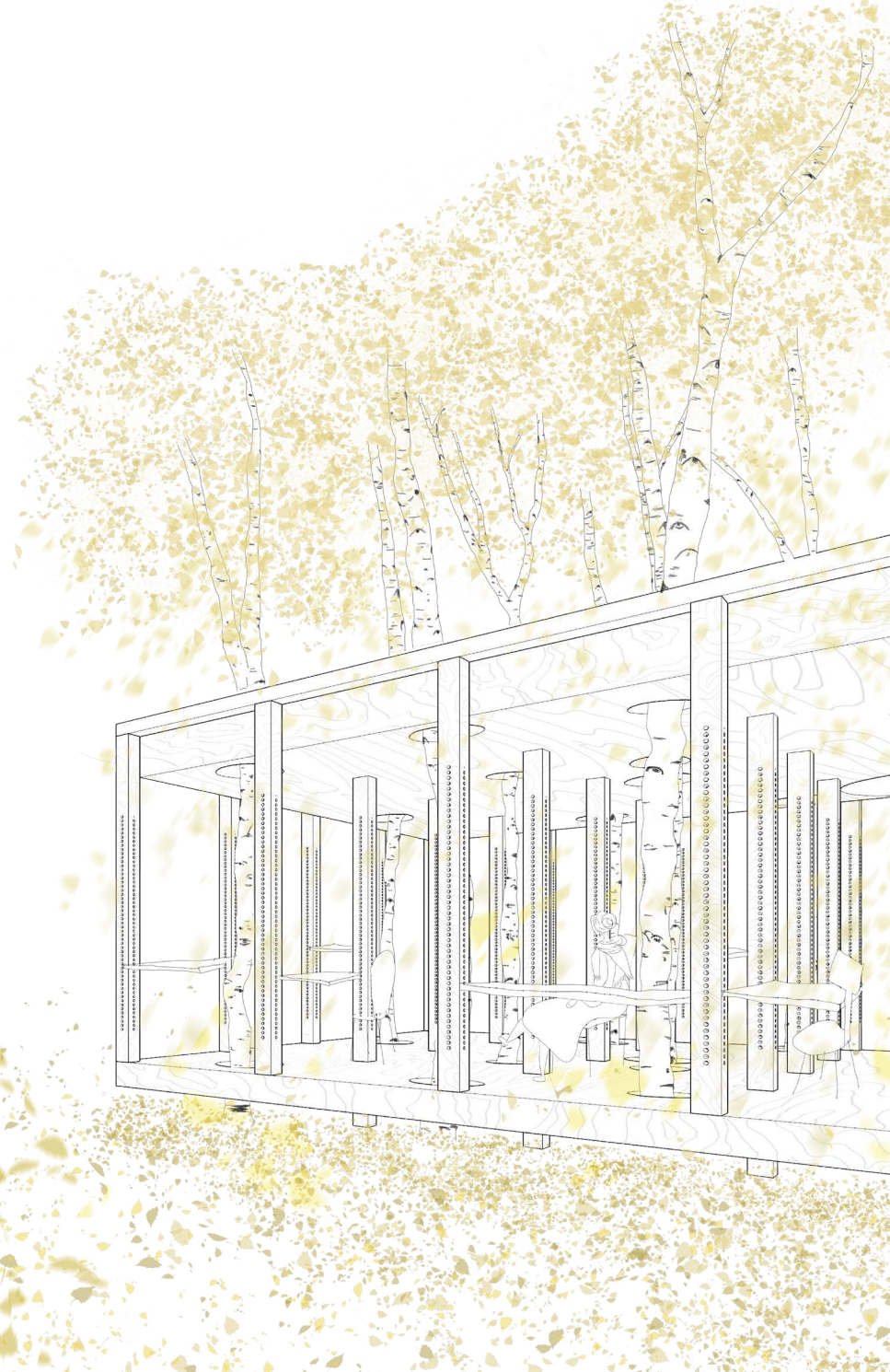
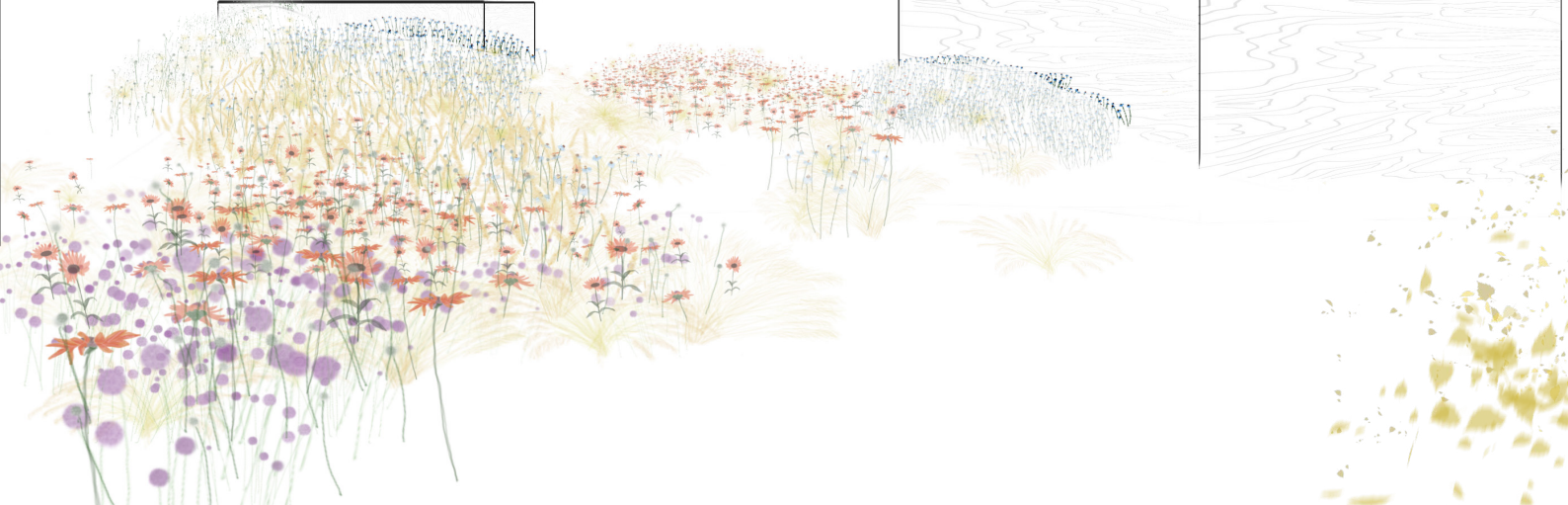
This collection of evergreen and deciduous species blossom in different seasons, filling the space all year round with various aromas, colours and figures.



The flowers and grasses that follow the curves of this landscape create a natural partition between the cabins, overlooking the landscape and facing each other.



The tabloids are made of solid *Pauwlowia* wood, a very light wood species which makes the single-table 26.8kg and the table for two 34.5 kg.



\*Beside indigenous wood species several 'Lesser Known Timber Species' from Bessila were chosen for finishing and construction. They contribute to the diversity and sustainability of forest management and the safeguarding of tropical forests.