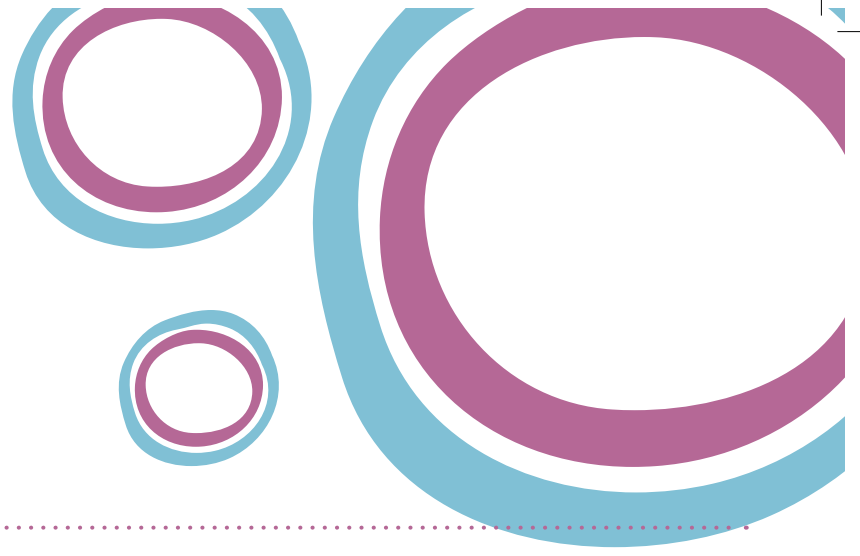




Building on excellence

May 2016



Phase One opens

Phase One of our multi-million pound redevelopment has now opened. Patients are now being treated in the newly created Bensen ward, in single en suite rooms. Our new state-of-the-art theatres and our new Endoscopy suite come into use mid-May.

Graham Goddard, the Hospital Development Project Director, said: "We are very pleased that we are now able to offer these fantastic facilities to our patients. The new ward and the en suite patient rooms are bright and spacious and are fitted out with new equipment and furniture. Some of the rooms have magnificent views across the Kent countryside.

"Our design concept took on board evidence from healing environment research which

concludes that the physical healthcare environment can make a difference in how quickly the patient recovers.

"Work now continues on Phase Two with the entire project to open in Spring 2017. Once complete we will have a first class hospital here with excellent facilities."

Phase One also included the building and equipping of a new plant room, below the

Hospital. It is fitted out with the latest plant equipment and technology and provides power, heating, ventilation and other patient related services.

Towards the end of May the remaining areas of the Hospital will be vacated and handed over to the Hospital's contractors Willmott Dixon, as staff and patients move into newly created areas.

Some elements of Phase Two of the project have already commenced and work on the new west wing is progressing well. Phase Two will provide a new Outpatients department, an eye unit, a physiotherapy

area, a pharmacy, a new light, airy and spacious atrium, a restaurant and new car parking adjacent to the Hospital.

There will also be a new scanning and imaging suite which will include a new MRI scanner and a CT scanner. The Hospital now has tenders in and will be deciding soon on the best equipment to purchase to meet patient needs.

The Hospital is also working with a specialist catering design contractor on its new restaurant.

As part of the Phase Two works vehicle access to the Hospital's main reception area will be restricted, as a temporary measure, so that work can start in this area. Any disruption to patients, visitors and staff will be kept to an absolute minimum.

Following completion of the Hospital redevelopment there will be a further stage of work to upgrade and change the use of the industrial buildings opposite the Hospital. A new Learning and Development Centre is to be created for staff and external

organisations as part of this work. These plans are still to be finalised.

Jane Abbott, Hospital Director, said: "It is wonderful to see our superb facilities now being used. Hospital staff have been wonderful, continuing to deliver an service excellent for our patients and I would like to thank them for their support."



Interior design

The Hospital is working with an artist and photographer on aspects of the redevelopment's interior design.

Hugh Turvey is Artist in Residence with the British Institute of Radiology. He specialises in taking xray images of everyday objects and creating artworks from these. His works are a hybrid of science, graphic design and pure photography.

His pictures will feature across the new Hospital. We are already displaying an artwork by Hugh of foxgloves, by one of the nurse stations on the Bensan ward.

In 2014, he was awarded an honorary fellowship by the Royal Photographic Society for his work as an advocate for imaging innovation and its role in the advancement of science and understanding.

Alongside his artistic practice, Hugh is also a pioneering creative practitioner for better healthcare environments. He has worked on large-scale art installation projects in hospitals in Germany, the UK and USA and is currently part of an art research team at University College Hospital, London, that is creatively thinking about ways to improve patient experience.



www.benendenhospital.org.uk

The benenden hospital trust is a company limited by guarantee.
Registered in England, number 3454120. Reg charity number 1065995.
Reg office, The benenden hospital trust, Benenden, Cranbrook, Kent TN17 4AX.


benendenhospital
trust