



Caution: This is a medical device and must be used in conjunction with sound clinical guidance. The full instruction manual must be read in full prior to use and consideration must be given to local policies.
For assistance please call 0845 003 7979 / www.squirrelmedical.com



1. Check that you have the following parts:



- ✓ 1 x Mattress (including top cover)
- ✓ 1 x Squirrel Pump 8900
- ✓ 1 x User Manual
- ✓ 1 x Standard Pump Hook (Pre attached to pump)
- ✓ 1 x Extra Deep Pump Hook (for use with deep depth footboards)

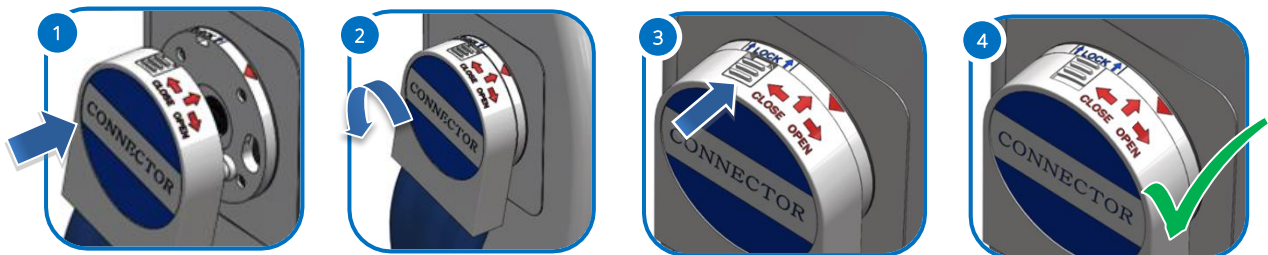
2. Assemble the Mattress

- 1) Attach the pump to the footboard of the bed. If the standard pump hooks are not deep enough to fit the footboard, please change to the second deeper version.
- 2) Place the mattress base onto the bed frame, threading the tube set under the footboard. Make sure that the tube set does not impede moving parts.
- 3) Ensure that the mattress top cover is fully zipped into place.
- 4) Secure the Diamond mattress base on to the bed frame using the black nylon straps that are located on the base of the mattress. Ensure that the straps do not impede moving parts.



5) Tube Set Connector

Connect the Tube set as illustrated below. Ensure the lock is engaged before use.



- 6) Check CPR Valve. Ensure that the CPR valve on the tube set is closed.
- 7) Plug the pump into a power socket ensuring that electric cables are routed so they do not pose a trip hazard.



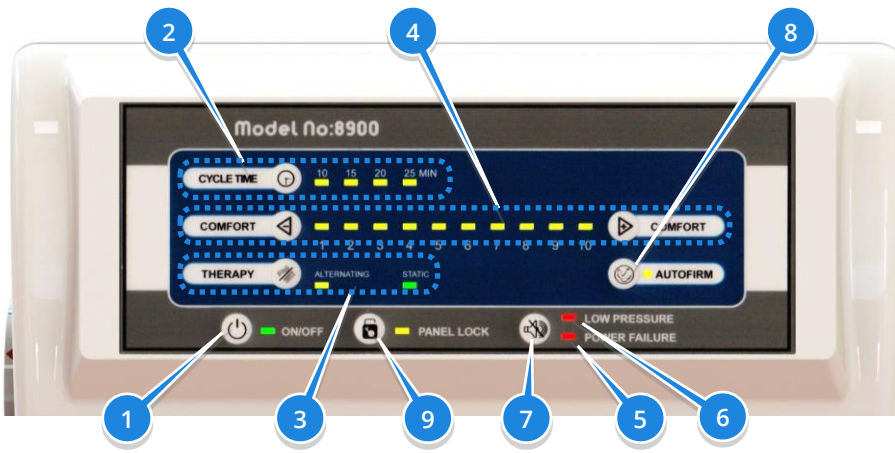
IEC60601-2-52 and Bed Side Rails
The latest Medical bed regulations require side rails to offer at least 22cm of protection above the mattress



Mattress Replacement System
The Diamond MRS is a full mattress replacement system and should not be used in conjunction with an "Under-lay" foam mattress.



3. Using the Diamond MRS

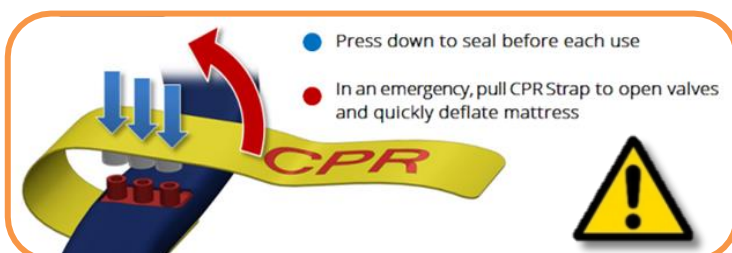


Comfort Setting	Standard & Long DIA302 & DIA306	Wide Mattress DIA304
1	30Kg - 50Kg	30Kg - 50Kg
2	50Kg - 65Kg	50Kg - 70Kg
3	65Kg - 80Kg	70 Kg - 90Kg
4	75Kg - 85Kg	90Kg - 110Kg
5	80Kg - 100Kg	110Kg - 130Kg
6	95Kg - 115Kg	130Kg - 150Kg
7	115Kg - 140Kg	150Kg - 170Kg
8	140Kg - 160Kg	170Kg - 190Kg
9	160Kg - 180Kg	190Kg - 210Kg
10	180Kg - 200Kg	210Kg - 243Kg



Caution: These weights are approximate and should be varied according to the comfort and clinical needs of the patient.

1	ON/OFF Button	Pressing the ON/OFF button will toggle the pump on & off. The green light will illuminate when the pump is running.
2	CYCLE TIME Select	Pressing the CYCLE TIME button will increment the cycle time of the system from 10, 15, 20, 25 and then back to 10 minutes, as displayed by the 4 corresponding lights. <u>NOTE: Only functions when running in Alternating Mode</u>
3	THERAPY Mode Select	Pressing the THERAPY button will toggle between Alternating and Static modes. Current mode is displayed with the corresponding lights. <ul style="list-style-type: none"> Alternating Mode – The Air Cells in the Mattress will inflate and deflate alternately. The rate at which this occurs can be adjusted using the CYCLE TIME button. Static Mode – All the Air Cells in the mattress are inflated at the same time, providing a stable surface. <u>NOTE: Static Mode will automatically revert back to Alternating Mode after 20 minutes</u>
4	COMFORT Setting	The ◀ and ▶ buttons adjusts the pressure in the mattress between 10 different levels; 1 being soft, 10 being firm. Refer to Comfort Setting Table, above right. <u>NOTE: Will not function when running in AutoFirm mode</u>
5	POWER FAILURE Light	This light will flash accompanied by a sounder if the Pump is disconnected from the mains power while running.
6	LOW PRESSURE Light	This light is lit when the pressure in the mattress is too low. It will flash and be accompanied by an audible alarm if the system detects a prolonged period of low pressure.
7	Alarm Mute Button	Pressing the Alarm Mute Button will temporarily silence the audible alarm of either the Low Pressure or Power Failure warnings. Any corresponding warning lights will remain lit (or flashing) until the issue has been resolved.
8	AUTOFIRM	The AutoFirm function allows for the rapid inflation of the mattress to facilitate patient treatment on a firm surface. It can also be used to provide a stable surface prior to entering or exiting the bed. AutoFirm inflates all cells to their maximum inflation level in a non-alternating mode for a period of 20 minutes. After this time has elapsed, the pump will revert to its previous settings.
9	Panel Safety Lock	After 5 minutes of inactivity, the control panel will automatically lock to prevent accidental or unauthorised adjustments. To operate any controls, press and hold the PANEL LOCK button for 4 seconds, or until the corresponding light goes out. <u>NOTE: Even when locked, the ON/OFF button and 'Alarm Mute' button can still be operated</u>



Support surfaces alone neither prevent nor heal pressure ulcers. They are to be used as part of a total management plan for the prevention and treatment of pressure ulcers (NPUAP, EPUAP & PPIIA 2014)