

First note



If I Fell

E \flat m



D



If I fell in love with you, would you prom - ise to be true and

D \flat



B \flat m



E \flat m



3



help me un - der - stand? _ 'Cause I've been in love be - fore, and I

D



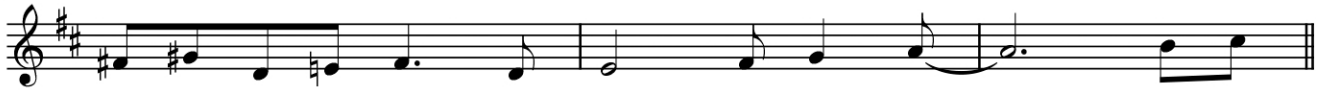
Em7



A7



6



found that love was more than just hold - ing hands. _ 1. If I

Verse

D



Em



F \sharp m



Fdim7



Em7



A7



9



give my heart to you, I must be sure from the
(2.) trust in you, oh, please don't run and hide. If I

13

D Em F#m Fdim7 Em7

ver love - y you, start too, that oh, you please would don't

16

A7 D Gm A7

love hurt me my more pride than like her. 2. If I

19

D7 D7 G

Bridge

her. 'Cause I could - n't stand the pain. And I

22

Gm D

— would be sad if our new love was in

25

A7 D Em F#m Fdim7

vain. 3. So I hope you see that

28

Em7 A7 D Em

I would love to love you and that

31

F#m Fdim7 Em7 A7

she will cry when she learns we are two. —

34

D7 A7

— 'Cause I she learns we are two. —

Outro

36

D Gm

— If I fell in love with

38

D Gm D

— you.

TAB