

FEATURES

- ◆ Wide input voltage range: 4:1
- ◆ Efficiency up to 89%
- ◆ Low non-load power consumption
- ◆ Operating temperature range: -40℃ to +105℃
- ◆ High insulation voltage: Input -output 1500VDC, input -case 1500VDC
- ◆ Input under-voltage protection, output over-current, over-voltage, over-temperature, short circuit protection
- ◆ Standard 1/2 brick package

CE

MDH300-24S15 is a high-performance 1/2 brick standard module power supply with a rated input voltage of 24VDC, output of 12V/300W, no minimum load requirement, wide voltage input of 9-40VDC, and stable single output. High isolation insulation voltage, allowing working temperatures up to 105℃, with functions such as input under voltage protection, output over current protection, over voltage protection, over temperature protection, short circuit protection, remote control and remote compensation, and output voltage regulation.

Selection Guide

Part No.	Input Voltage (VDC)	output power (W)	Output Voltage (VDC)	output current (A)	Ripple&Noise (mV)	Full Load Efficiency (%) Min/Typ.	Remark
MDH300-24S15A	9-40	300	15	20	150	87/89	Standard positive logic
MDH300-24S15AN							Standard negative logic
MDH300-24S15AH							Radiator positive logic
MDH300-24S15ANH							Radiator negative logic

Input Specifications

Item	Operating conditions	Min.	Typ.	Max.	Unit
Maximum input current	9V input voltage, 200W output	--	--	27	A
No load input current	24V input voltage	--	--	30	mA
Input surge voltage (1sec. max)	Input voltage exceeding this range may cause permanent damage	-0.7	--	50	VDC
Start up voltage		--	--	10	
Input under-voltage protection	200W load test,	--	--	9	
Remote control Pin(CNT)	Positive logic: CNT suspended or connected to 3.5-15V it starts up, connected to 0-1.2V it shuts down				Reference voltage-VIN
	Negative logic: CNT suspended or connected to 3.5-15V it shuts down, connected to 0-1.2V it starts up				

Output Specifications

Item	Operating conditions	Min.	Typ.	Max.	Unit
Output Voltage Accuracy	standard input voltage, ranging from 0% to 100% load	--	±0.5	±1.0	%
Linear regulation rate	Full load, input voltage changes from low voltage to high voltage	--	±0.1	±0.5	

Load regulation rate	Nominal input voltage, ranging from 10% to 100% load	--	±0.1	±0.5	
Output voltage setting accuracy	Full input voltage with 10% load	--	200	250	
Transient Recovery Time	25% load step change (step rate 1A/50uS)	-5	--	5	uS
Transient response deviation		-0.02	--	+0.02	%
Temperature drift coefficient	Full load	--	100	150	%/℃
Ripple & Noise	20M bandwidth, external connection of over 470uF capacitor for testing			5000	mVp-p
Adjustable output voltage (TRIM)		-10	--	+10	%
Remote compensation of output voltage (Sense)		--	--	105	%
Over Temperature Protection	Internal detection of resistance temperature in the product	105	115	125	℃
Output over-voltage protection		125	--	150	%
Output over-current protection	Below 18V, the current limiting point decreases	22	--	28	A
Short Circuit Protection		Hiccup style, sustainable, self recovering			

General Specifications

Item	Operating conditions		Min.	Typ.	Max.	Unit
Isolation voltage	Input-output	Electric Strength Test for 1 minute with a leakage current of 3 mA max.	--	--	1500	VDC
	input-case		--	--	1500	VDC
	Output-case		--	--	500	VDC
insulation resistance	Input-output	insulation voltage 500VDC	100	--	--	MΩ
switching frequency			--	200	--	KHz
Mean time between failures			150	--	--	K hours

Environmental Characteristics

Item	Operating conditions	Min.	Typ.	Max.	Unit
Operating temperature	See temperature derating curve	-40	--	+105	℃
storage temperature	No condensation	5	--	95	%RH
Storage humidity		-40	--	+125	℃
Pin resistant to welding temperature	The distance between the welding point and the case is 1.5mm, and the welding time is less than 1.5S	--	--	+350	
Cooling Requirements		EN60068-2-1			
Dry heat requirement		EN60068-2-2			
Humidity and heat requirement		EN60068-2-30			
shock and vibration		IEC/EN 61373			

EMC (EN55032)

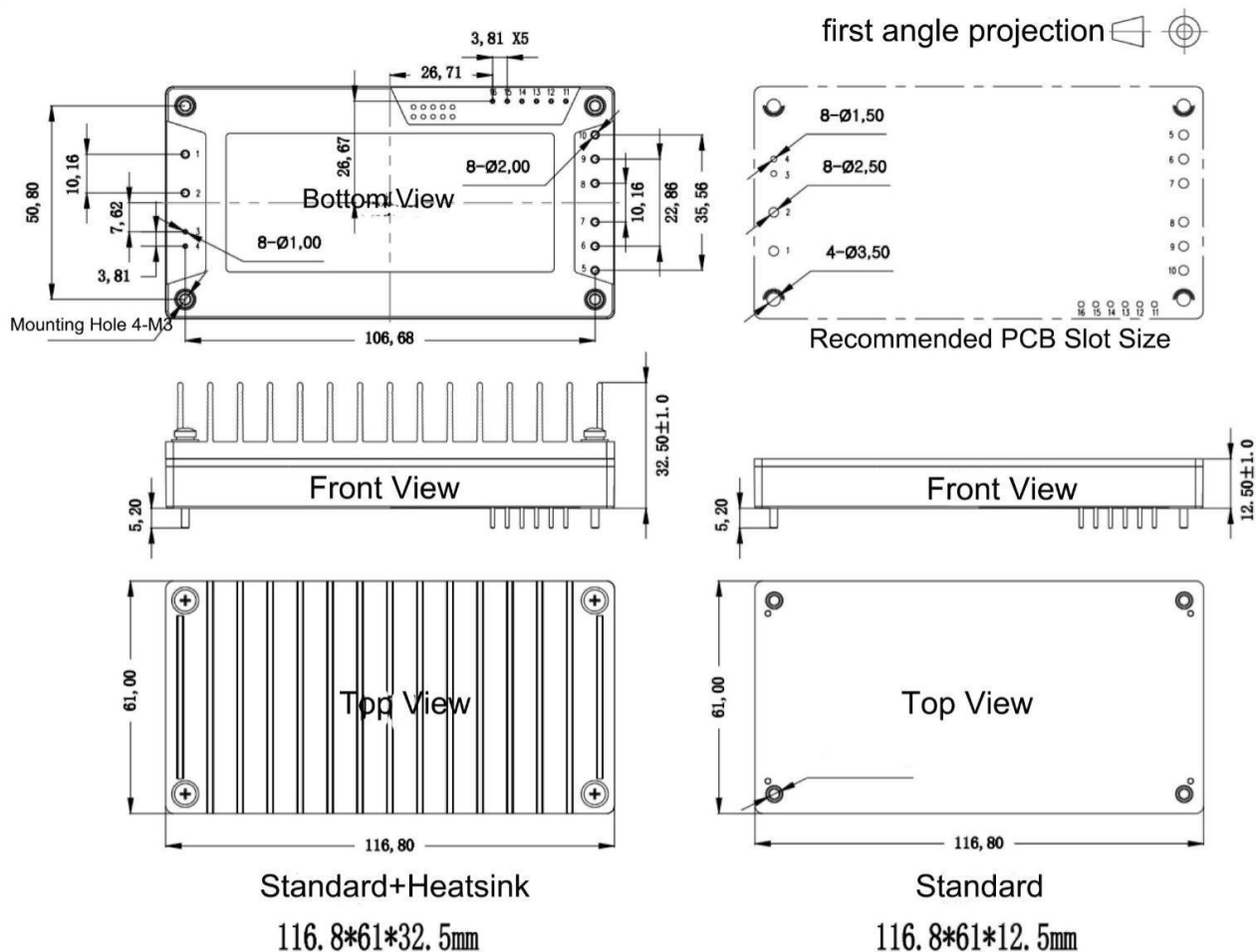
EMI	CE	EN55032-3-2	150kHz-500kHz 66dBuV	
		EN55032-2-1	500kHz-30MHz 60dBuV	
	RE	EN55032-3-2	30MHz-230MHz 50dBuV/m at 3m	
		EN55032-2-1	230MHz-1GHz 57dBuV/m at 3m	
EMS	ESD	EN55032-3-2	Contact ±6KV/Air ±8KV	perf. Criteria A

RS	EN55032-3-2	10V/m	perf. Criteria A
EFT	EN55032-3-2	±2kV 5/50ns 5kHz	perf. Criteria A
Surge	EN55032-3-2	line to line ± 1KV (42Ω, 0.5μF)	perf. Criteria A
CS	EN55032-3-2	0.15MHz-80MHz 10 Vr.m.s	perf. Criteria A

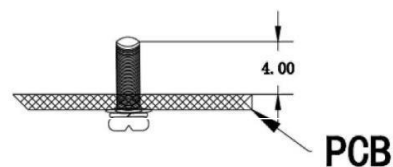
Physical Specifications

Case Material	Metal bottom shell+black flame-retardant material case (UL94-V0)
Radiator	Size 61*57.9*15mm, weight 65g, aluminum alloy material, anodized black
Cooling Method	Conducted heat dissipation or forced air cooling
Weight	Standard type 120g, radiator type 188g

Dimensions and Pin-Out

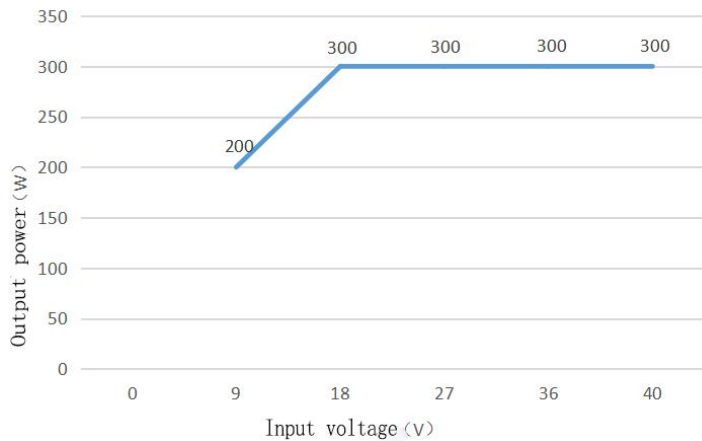
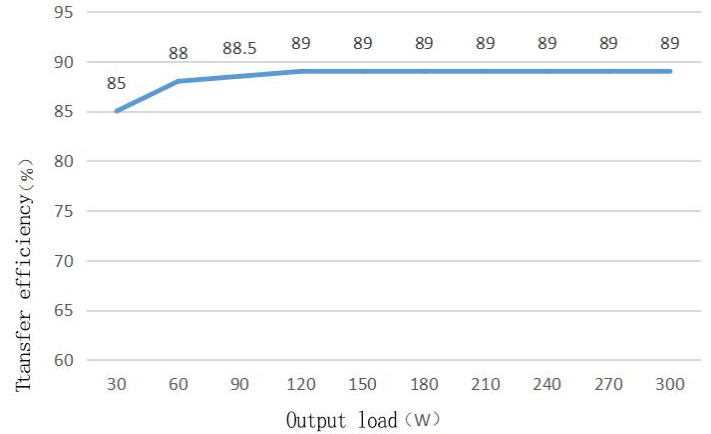
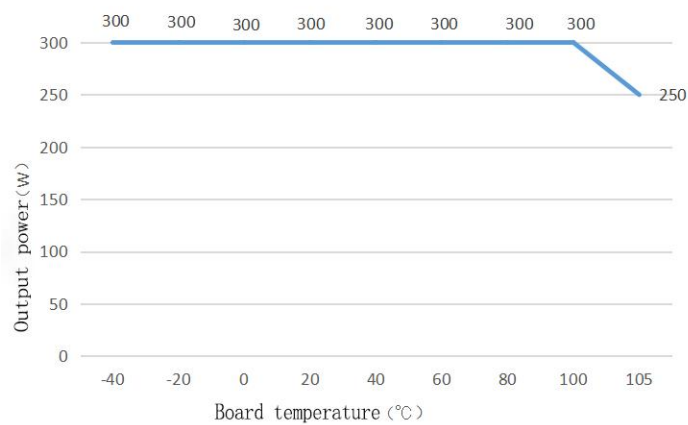


Note:
unit:mm
Pin1,2,5,6,7,8,9,10 dia:2.00
Pin3,4,11,12,13,14,15,16:1.00
general tolerance:±0.10
mounting hole tightening torque: Max 0.4N*m



No.	1	2	3	4	5	6	7	8
Definition	Vin+	CNT	Vin-	OUT-	-S	TRIM	+S	OUT+
function	Input positive	Remote pole	Input negative	Output negative	Remote compensation negative pole	Output trim	Remote compensation positive pole	Output positive

Typical Characteristic Curves



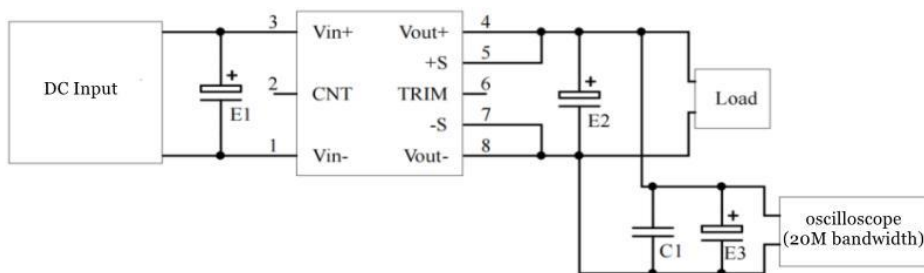
Note:

1. The temperature derating curve and efficiency curve are both typical value tests;
2. The temperature derating curve is tested according to our laboratory testing conditions. If the actual environmental conditions used by the customer are inconsistent, it is necessary to ensure that the temperature of the aluminum shell of the product does not exceed 105 °C and can be used within any rated load range.

Design Reference

1. Ripple&Noise

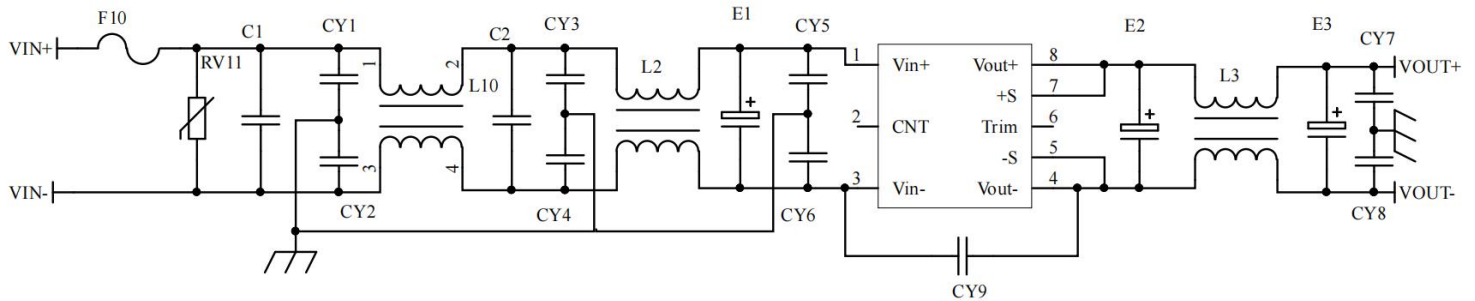
All DC/DC converters in this series are tested according to the recommended test circuit shown in the following figure before leaving the factory.



capacitor value	E1 (μF)	E2 (μF)	C1 (μF)	E3 (μF)
Output voltage				
3.3VDC	100	1000	1	10
5VDC		680		
12VDC		220		
.....				
48VDC	68	68		
.....				
110VDC				

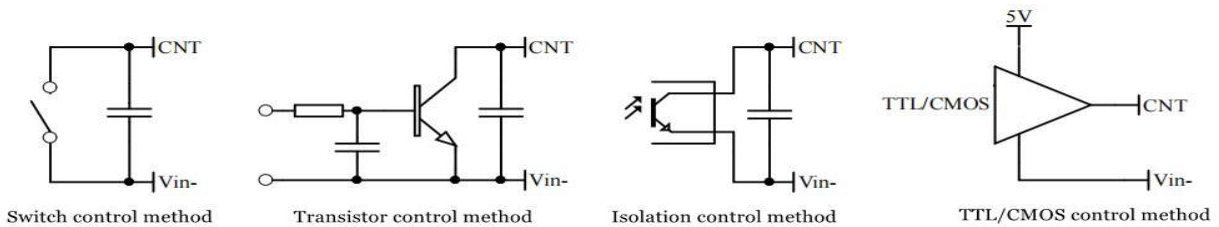
2. Recommended application circuit

If the customer does not use our recommended circuit, please make sure to parallel an electrolytic capacitor of at least 220 μ F at the input end to suppress the surge voltage that may be generated at the input end.



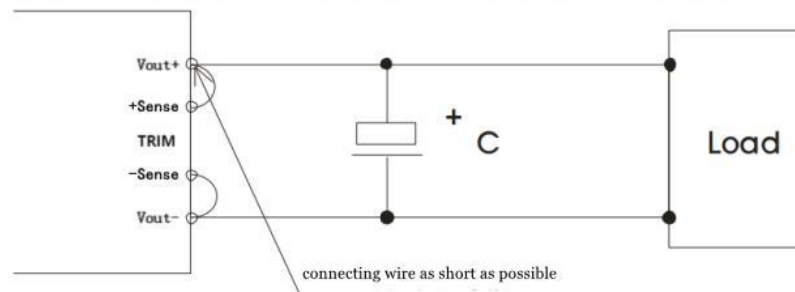
F1	T40A/250V fuse
RV1	14D 63V varistor
C1,C2	225/63V Polyester film capacitor
CY1,CY2,CY3,CY4,CY5,CY6	102/250Vac safety standard Y2 capacitor
CY7,CY8	103/2KV ceramic capacitor
CY9	471/250Vac safety standard Y2 capacitor
E1	220 μ F/50V Electrolytic capacitor
E2, E3	470 μ F/25V low ESR capacitor
L1,L2	Inductance greater than 3mH, over current 27A, temperature rise less than 25 $^{\circ}$ C
L3	Inductance greater than 100 μ H, over current 20A, temperature rise less than 25 $^{\circ}$ C

3. Recommended application of remote control terminal (CNT) control mode



4. Usage and precautions of Sense

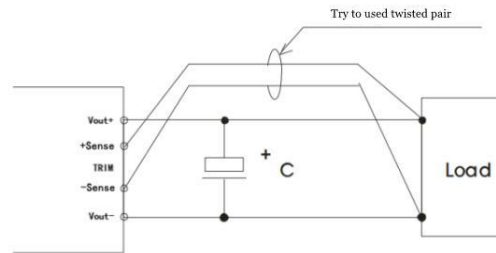
(1) Without using far-end compensation:



attention:

1. when without using far-end compensation, ensure that Vout+ is short circuited to Sense+ and Vout- is short circuited to Sense-;
2. The connection between Vout+ and Sense+, Vout- and Sense- should be as short as possible and close to the pins, otherwise it may cause instability of the module.

(2) using far-end compensation:



attention:

When using far-end compensation lead, it may cause unstable output voltage;

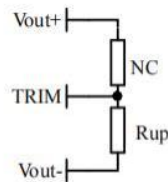
If using remote compensation, please use twisted pair or shielded wire and make the lead as short as possible;

3. Please use wide PCB leads or thick wires between the power module and the load, and keep the line voltage drop below 0.3V to ensure that the power output voltage remains within the specified range;

4. The impedance of the lead may cause output voltage oscillation or significant ripple. Please verify before use.

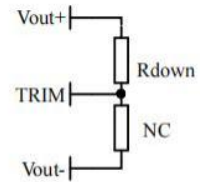
5. The use of TRIM and the calculation of TRIM resistance

The relationship between the output change voltage ΔU and resistance is as follows:



Voltage up regulation: add resistor R_{up} between Trim and output negative

$$R_{up} = 70 / \Delta U - 5.1 \text{ (K}\Omega\text{)}$$



Voltage Down: Add resistor R_{down} between Trim and output positive

$$R_{down} = 28 * (24 - 2.5 - \Delta U) / \Delta U - 5.1 \text{ (K}\Omega\text{)}$$

6. This product does not support direct parallel connection to increase power. If parallel connection is required, please consult our technical personnel

Others

1. This product has a two-year warranty period. If it is naturally damaged during the warranty period, it will be repaired free of charge. If the malfunction is caused by incorrect usage or manufacturing techniques, repairs will be charged.
2. Our company can provide customized products and matching filter modules. For specific details, please contact our technical personnel directly.