



FeverCam Corporate F100

FeverCam Corporate F100

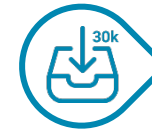
Ensure a healthy and safe environment for people to live



FeverCam Corporate Face Monitoring Systems complete temperature measurements for 1 individual at a time. Ideal for medium volume traffic areas as measurements are automated (requiring no staff) and quick (<1s). Each individual will step up to the FeverCam System to complete the test. The FeverCam System will automatically detect anyone with a fever and alert the security team. This system can also provide facial recognition features to allow for building access control.



1 temperature scan at a time



Face Recognition: Store 30k faces



Integrated with access control system

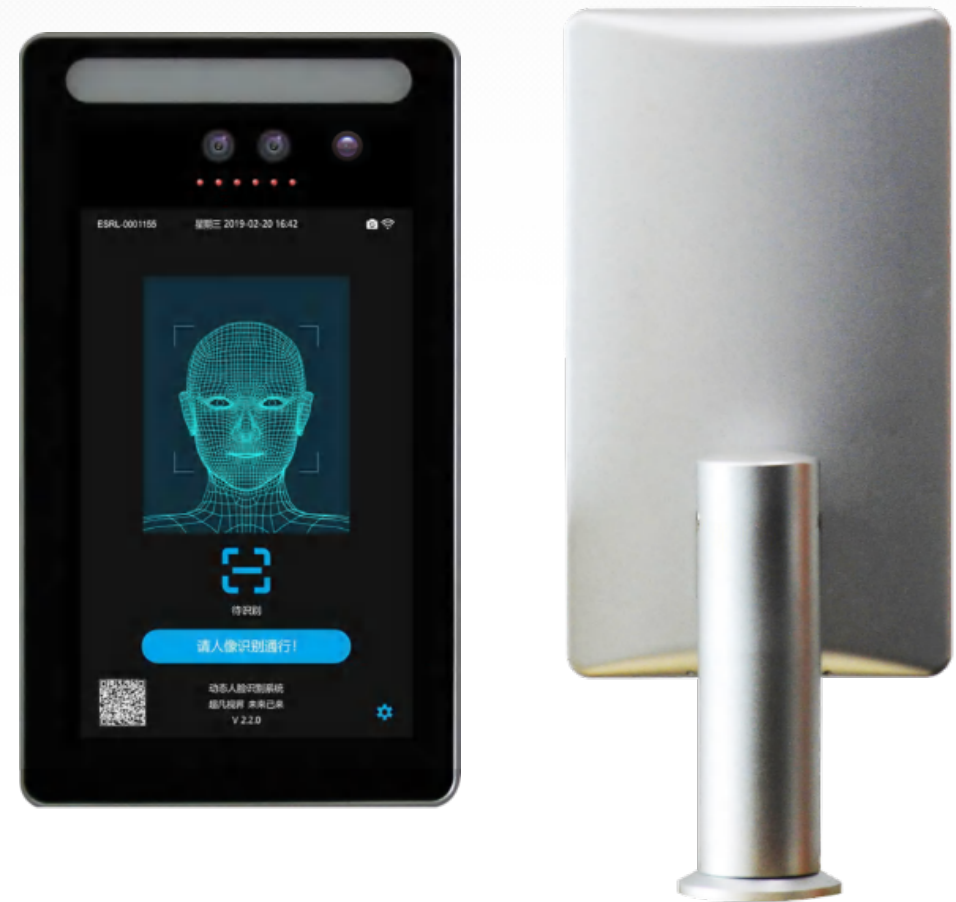


Made in Taiwan (100% components not from China)

FeverCam Corporate F100 Features

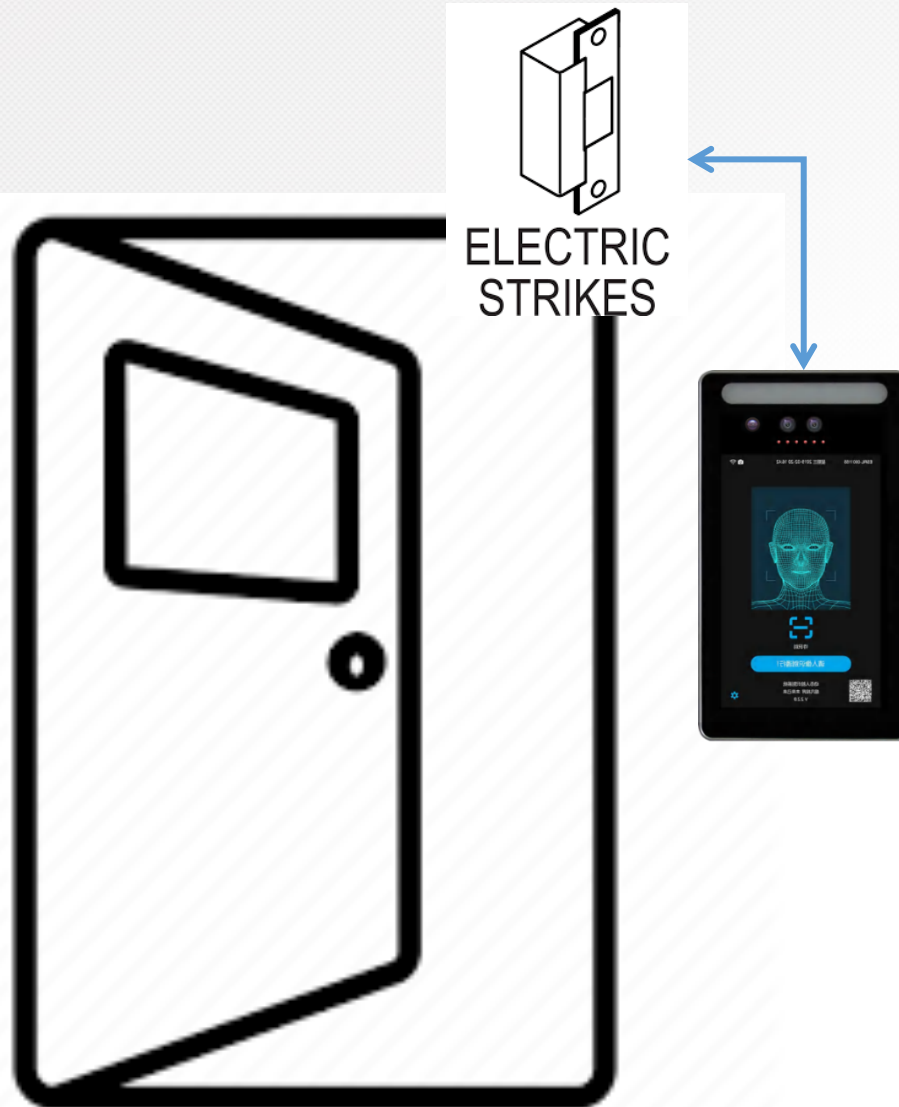
Ensure a healthy and safe environment for people to live

- Touchless, anonymous temperature check
- Infrared thermometer: Accuracy of $\pm 0.3^{\circ}\text{C}$ ($\pm 0.54^{\circ}\text{F}$) from a distance of 0.5m~1m (1.64ft~3.28ft)
- Facial recognition speed $<0.5\text{s}$ & 99.7% accuracy
- Store up to 30,000 unique faces in offline database
- Store Up to 100,000 event snapshots in local database
- Automatic LED and screen alert notification of fever
- Integrates with existing access control
- Wi-Fi or ethernet connections
- 8 In. Touch Screen: Real-Time Temperature Display
- Stand-Alone Setup (No additional Computer/Notebook Required)
- Made in Taiwan (100% key components not from China, Thermal sensor from Europe)



Integrate with Access Control Systems

Ensure a healthy and safe environment for people to live



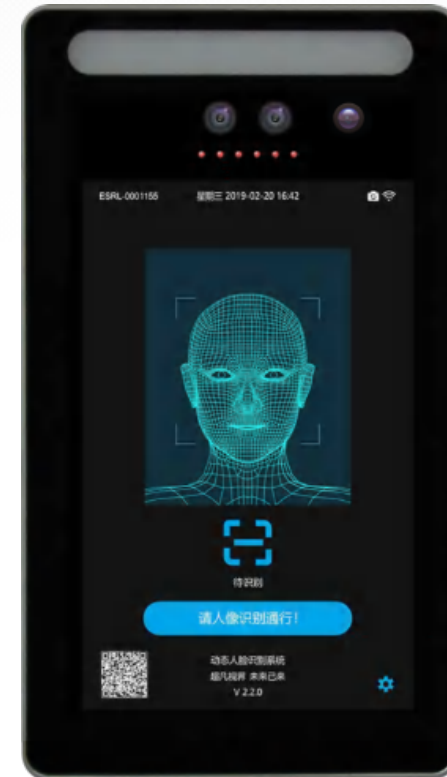
FeverCam Corporate F100 can be integrated with access control system to use facial recognition for access control and simultaneously records and logs employee temperatures.

- Store up to 30,000 unique faces in offline database
- Facial recognition speed <0.5s & 99.7% accuracy
- Visual & IR cam for liveness detection(anti-spoofing)
- Electric Door lock control interface
- Wiegand protocol to integrated with your access control system

FeverCam Corporate F100 DataSheet

Ensure a healthy and safe environment for people to live

Thermal Sensor	Short Distance Thermal Sensor
Sensing module	MLX 90640/MLX90621
Temperature Accuracy	+/- 0.3°C (+/- 0.54°F)
Temperature Measurement Distance	0.5~1 Meter (1.64~3.28 Feet)
Voice Alert	Yes (Abnormal Temp.)
Optical Visible Image	1080P CMOS Sensor
Monitor	8 inch, Touch
Monitor Resolution	800*1280
Face Recognition Database Capacity	30,000 people
Face Recognition Accuracy	99.70%
Recognition speed	<500ms
External IO	DI, DO, Wiegand, Ethernet
Management Platform	Yes
Appearance	CNC Metal (Aluminum Alloys)
Water Proof	IP65 (Protected from light rain)
Dimension	138mm ×250mm ×20mm (5.43in ×9.84in× 0.79in)
Weight	1150 g
Power input	DC12V/3A
Power Consumption	15W
Working Temp.	0~60°C(32~140°F), <95%RH
Certification	CE, FCC, RoHS compliant
CPU	Cortex-A53 -8 core 1.4GHz
Memory RAM	2GB DDR3 800MHz
Memory ROM	8GB



Pain Points of Traditional Temp. Measurement

Ensure a healthy and safe environment for people to live



Wasting Time & Manpower

Temperature guns takes 3~5 seconds and dedicated operator to complete the measurements.



Contact Temp. Measurement

Temperature guns require operators to be close up in person in order to complete the measurements. This will increase the risk of COVID-19 cross infection.

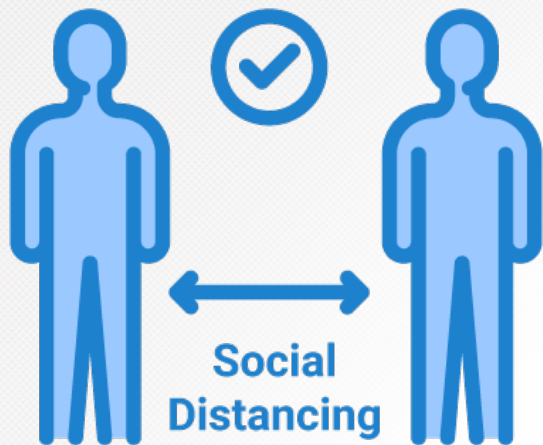


Lacking Digital Data

Temperature information has to be log manually, therefore difficult for contact tracing and analyze.

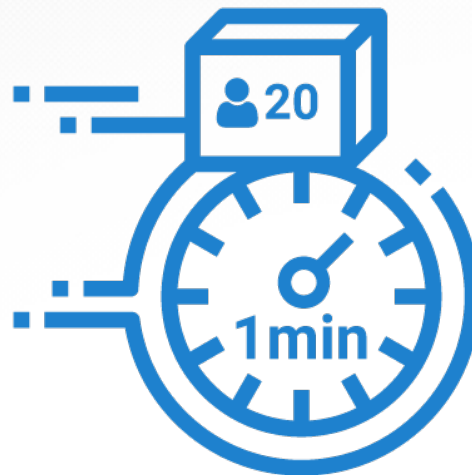
FAST & SAFE Fever Detection

Ensure a healthy and safe environment for people to live



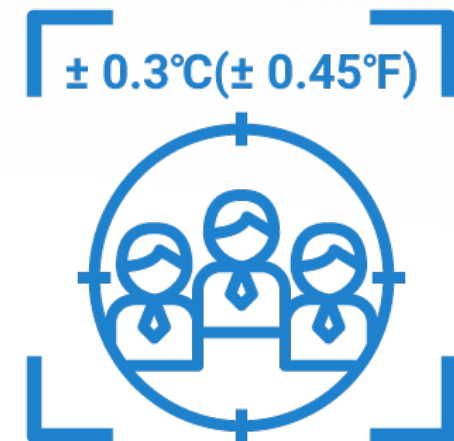
Contact Free

Automatically measures temperature and alerts monitoring systems of high temp without dedicated operator to reduce risk of COVID-19 cross infection.



Fast

One minute to complete setup, and proceed 20 person temperature measurements every minute.



Accurate

+/-0.3°C (+/- 0.54°F) temperature error, and support face recognition accuracy > 99.7%. Face recognition features can be integrated into existing access control

Use Case

Ensure a healthy and safe environment for people to live



Office buildings



Health clinics



Hotels



Gyms



Restaurants

FeverCam Corporate is best suited for environment with traffic under 20 persons per minute. FeverCam Corporate scans and produces immediate results including face snapshot records processing 20 persons per minute. Touch screen UI design allow the system to operate without any additional PC/notebook; and built-in face recognition feature can be integrated into existing access control.

FeverCam Portfolio vs. Traditional Temp. Meas.

Ensure a healthy and safe environment for people to live

	FeverCam Public	FeverCam Corporate	FeverCam SME	Traditional Temp. Measure
Temperature Measurement speed	20~60 people/min	<20 people/min	<20 people/min	5~10 people/min
Simultaneously Measure # of Individuals	24/7, >16 person simultaneously. Mass Rapid Contact-free temperature screening	24/7, One person each time within 1 second. Quick 1-on-1 non-Contact-free temperature screening	24/7, One person each time within 1 second. Quick 1-on-1 Contact-free temperature screening	Requires dedicated operator. One person each time within 3~5 second. Slow Contract 1-on-1 temperature measurement
Measurement Distance	1m~3m (3.28ft~9.84ft)	0.5m~1m (1.64ft~3.28ft)	0.3m (1ft)	0.05m (0.16ft)
Contract and Distance	Contact-free, keep social distance	Contact-free, keep social distance	Contact-free, keep social distance	Contact Measurement
Data collection	digital data with video and snapshot	digital data with face recognition and snapshot	Manual paper work	Manual paper work