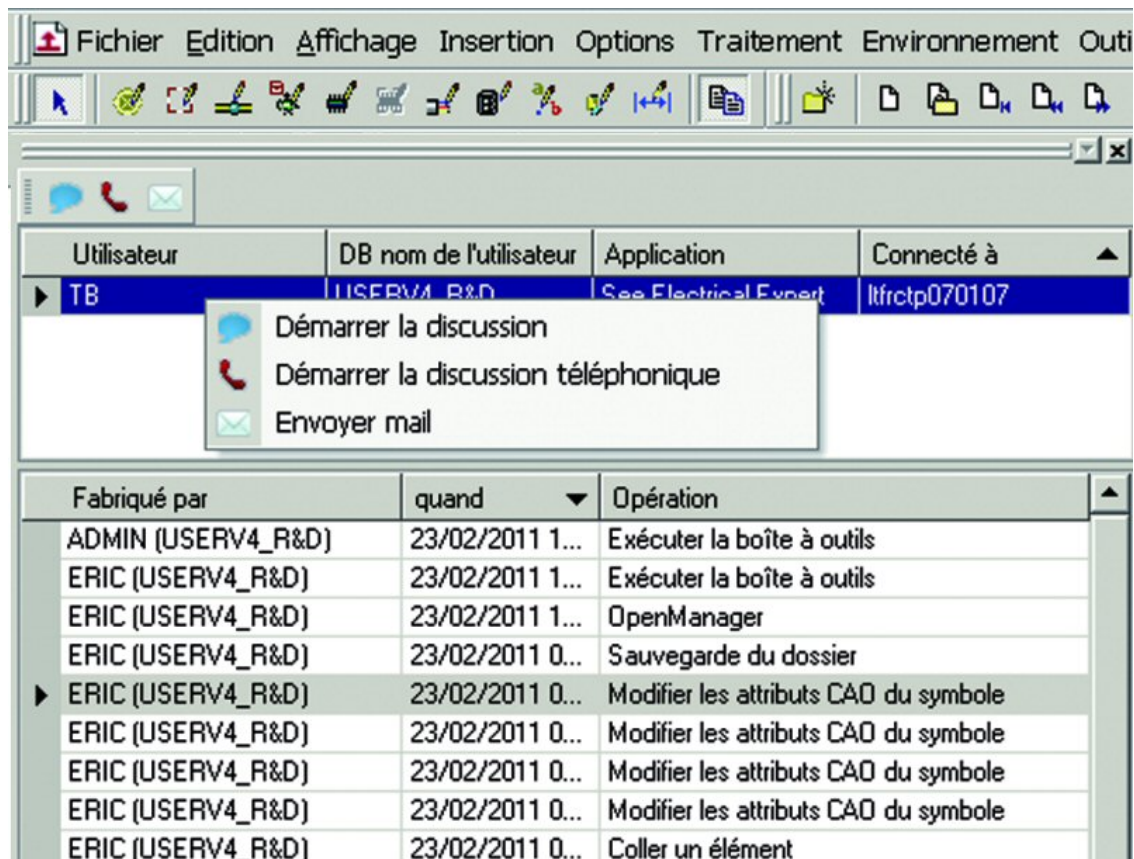


Crack Dongle See Electrical Expert



DOWNLOAD: <https://byltly.com/2ik845>

Download

(www.eeponline.com.au) on how to remove the water in the system check for loose wires and/or broken wires. Remove water heater from water if possible; test if the heater is getting power and that it is working by opening cold water taps or faucets (the outlet should be warm). You should not get any water when it is working. The back of the heater may have 2 blue posts for the same 2 legs on the front (just below the top). If you can get power to the unit, try to get the water heater unplugged. Be careful of the other plumbing in the house, or you may have a backed up system. If you still cannot get the water heater unplugged, take the top off the heater by disconnecting the terminals. If the terminals are there they should be tight. Make sure the end of the heater is clean, and then insert a finger into the middle and turn it slowly clockwise until the unit stops. Do not remove the heating element (that is a steel rod inside the heater), as this will not allow the water to heat. Another test, if the water heater has

a gas valve (as opposed to a gas pilot) there may be a wire that comes from the top of the heater down into a common area on the wall or in the basement. This wire connects to the gas valve. On the back of the heater there may be another terminal. If you can power the heater from a power source and it does not work, then disconnect this terminal and try a different power source.

If you have a backup electric water heater, then the same wiring is on the back. Connect a power source and test the heating element and see if it starts. If it does not, then the problem may be your electric wiring, and you can refer to this post. You should have a description of what the wiring is for the heater, and the heater should have a label and a tag with a model number on it. To power the heater from a power source, first disconnect the power source and then plug the heater in. Turn the thermostat down to 55 degrees and wait about 30 minutes to see if the temperature adjusts. In the unlikely event that you have a gas water heater and have a gas valve on the top of the heater, there may be 2 wires that go to the gas valve. There is one (usually white or yellow) that has a green and blue wire on 520fdb1ae7

Related links:

[Pokemon Nudist Version Rom Download](#)

[Xforce Keygen Inventor CAM 2013 Key](#)

[Getaway Island crack download pc kickass](#)