

*PCAR Products*



# *F2 Smart Fob for Porsche 993*

*No Programming Required!*

## **User's Guide**

Designed and Engineered by PCAR Products

Congratulations on your new F2! In a few minutes you will be creating a backup fob without programming or PIN code. All you need is the F2 and any fob currently paired to your car (the "donor").

Before getting started, take a minute to confirm that your donor fob locks and unlocks the car and that it is the same frequency as your F2. If you are not sure what your donor frequency is, check the back of the case. OEM fobs marked "RKY116", are 315MHz. Fobs marked "RKY114" are 433MHz. . If you are unsure what frequency system you have, see FAQs or contact us for assistance.

## CREATING YOUR F2 BACKUP

Creating your backup is super easy (see video in ad):

- Hold the donor in one hand and the F2 in the other.
- Press and hold both buttons down.
- Release both buttons when the F2's LED starts flashing.



Your F2 is ready to use!



Donor

F2

## USING YOUR F2

Once created, you can use either the *F2* or the donor by first “selecting” the one you want to use. To select a fob **press it 3 times near the car within 5 seconds**. The car will start responding to it and stop responding to the other one. To switch back, **press the other one 3 times near the car within 5 seconds**.

Think of the *F2* and donor as a fob “tag team” – one is active, the other is on standby. Practice switching:

- Verify that the donor fob locks and unlocks the car.
- Press the button on the *F2* 3 times near the car.
- Verify that the *F2* locks and unlocks the car.
- Press the donor fob 3 times near the car.
- Verify the donor locks and unlocks the car.

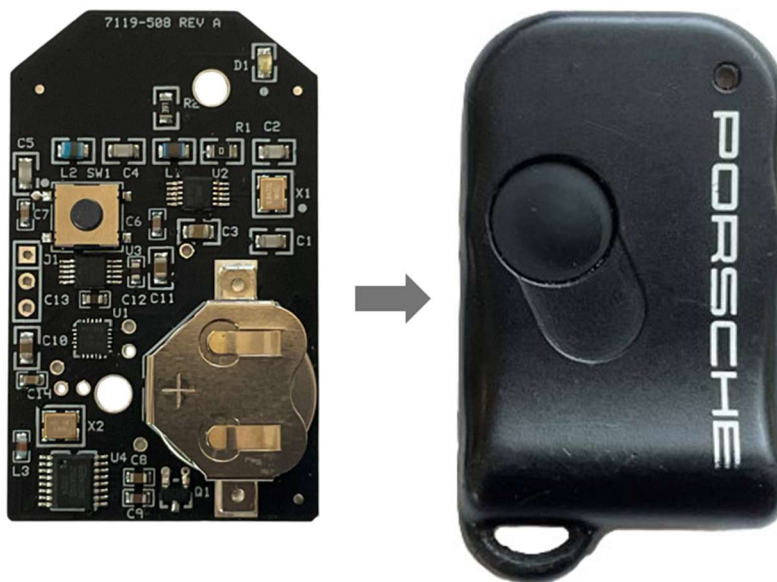


### REMEMBER

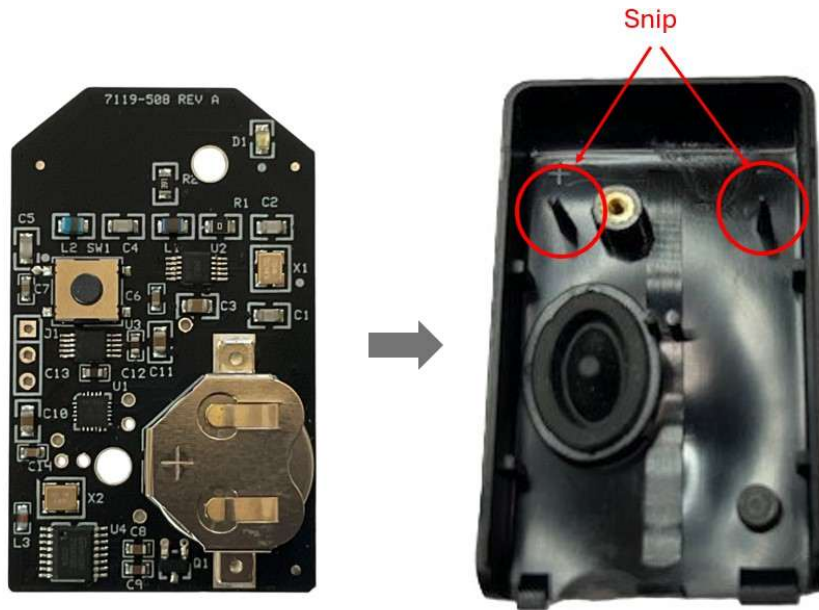
The 3-press procedure is only needed to **SWITCH** fobs. Once you switch, the selected fob will lock and unlock the car with a single press until you switch to the other one.

## INSTALLATION

Your *F2* comes in a mini fob case that is identical to the Porsche mini case. If you prefer the OEM look, simply install the *F2* circuit board in your Porsche case:



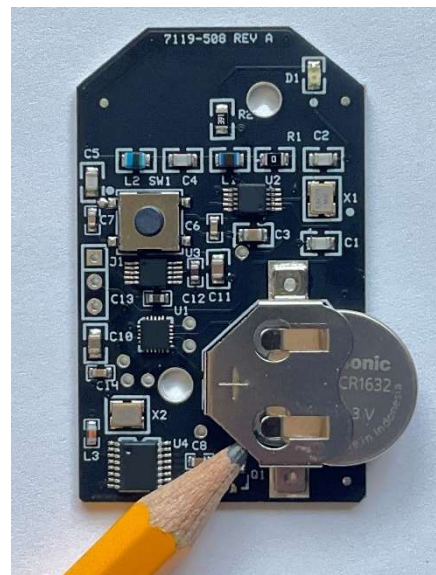
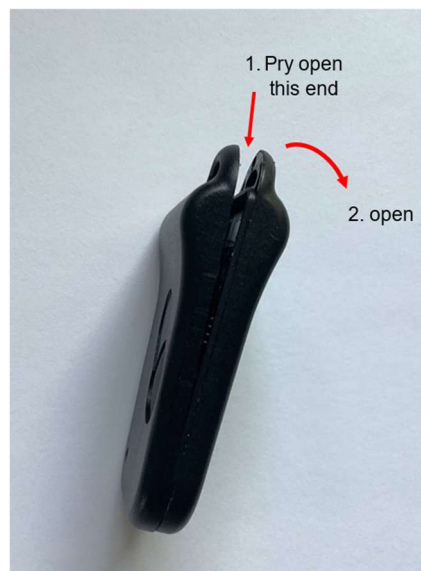
The F2 also fits the OEM switchblade housing. Just snip the two plastic posts off the top cover:



## BATTERY SERVICING

The F2 is powered by a supplied CR1632 lithium coin cell. Good quality cells typically have a 10-yr shelf-life and capacity for over 30,000 operations. Replace only with name-brand cells such as Panasonic, Toshiba, Murata, Energizer, etc. (Lesser-known brands vary significantly in quality and capacity).

To replace the battery, remove the Phillips screw on the back and use a fingernail to carefully pry the case open at the key ring end:



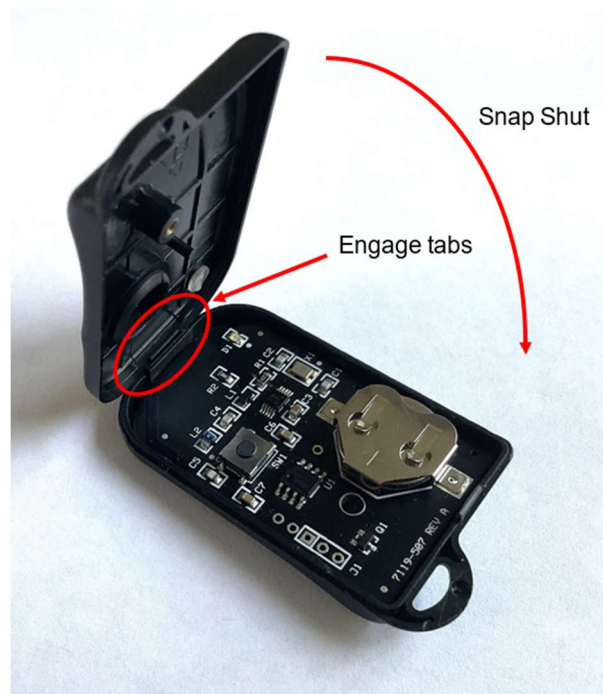
Remove the board from the case and push the battery out. This is a good time to inspect the battery contacts and clean if necessary. Install the new battery **+ side UP**.



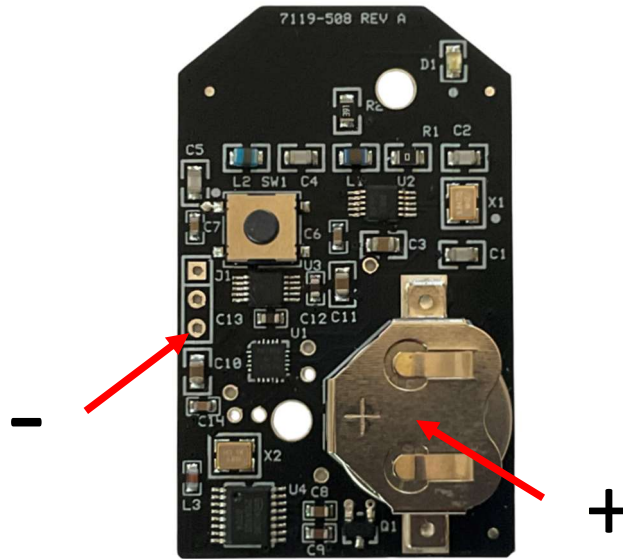
### CAUTION

Installing the battery upside down can short it out and reduce its capacity. Although the battery may still work, it is recommended to replace a reversed battery to ensure maximum longevity.

Before closing the case, make sure the LED illuminates when you press the button, then close the case by engaging the tabs, and snap shut. Re-install the screw.



If the LED does not illuminate, check that the battery is good and is installed "+" side up. The battery must be greater than 2.0 v. To get a valid reading you must measure it while the button is held down. Note: when the battery reaches end-of-life, the F2 will automatically stop transmitting and the LED will not illuminate.



## FOB Range

Users often ask, “How far away will my F2 work?” The honest answer is that range depends on a number of factors, including the fob itself, the immobilizer, battery condition, how the fob is held, vehicle orientation, and even the surrounding environment.

A more useful question is, “How does the F2 compare to my current fob?” Based on feedback from owners, the F2 consistently delivers better range than OEM fobs and, in some cases, up to four times the range of certain aftermarket alternatives.

We'd love to hear about your experience and how your F2 performs in the real world.

## TROUBLESHOOTING

The F2 is reliable and easy to use. If setup fails or the F2 stops working, it's usually battery related. Refer to BATTERY SERVICING before troubleshooting further.

**Q: When I tried to make my F2 backup, the F2 LED stayed on and never flashed.**

A: Reasons:

1. The donor may not be transmitting or is transmitting a weak signal. Make sure the donor fob locks and unlocks the car. If the car doesn't respond to the donor, the F2 won't either. Check the donor battery and contacts.

2. The donor may be transmitting at a different frequency than the *F2*. Make sure the donor fob frequency matches the frequency of your *F2* (see FAQs).
3. The donor may be an aftermarket fob that turns off before the backup can be completed. Follow the normal procedure but delay pressing the donor for at least 5 seconds after pressing the *F2*.
4. The *F2*'s button was released before the backup completed. Make sure the *F2*'s button is held down continuously - even a momentary release will restart the process.

**Q: The backup procedure completed ok, but the *F2* doesn't lock or unlock the car.**

A: Reasons:

1. The *F2* has not been "selected" as the active fob. Immediately after the backup completes the immobilizer is still listening to the donor. To test the *F2*, **Press it 3 times near the car within 5 seconds and try again**. Make sure each press is at least 1 second long, and that all 4 presses complete within 5 seconds.
2. The donor that the *F2* was created from is not paired to the car. Retry with a fob that is paired to the car.
3. The *F2* battery is weak (see BATTERY SERVICING)

## FAQs

**Q: Which Porsche fobs is the *F2* compatible with?**

A: The 315MHz *F2* is backwards compatible with Porsche fob P/N 993.618.259.02, and the 433MHz *F2* is backwards compatible with Porsche fob P/N 993.618.259.01.

**Q: Does the donor have to be a Porsche OEM fob?**

A: No. Any 993 compatible fob can serve as a donor as long as it operates on the same frequency as the *F2* and is currently paired to the immobilizer

**Q: After I create my *F2* backup, can I change my mind and backup a different fob?**

A: Yes. You can back up as many fobs as you like. However, each backup will overwrite the previous donor.

**Q: What if I don't have a fob that is paired to the car to use as a donor?**

A: The *F2* can also be paired to the car using the factory in-car programming procedure. However, if you're planning to use the factory procedure, the *F1* is probably the more practical choice.

**Q: If I have multiple fobs already paired to the car, will the “non-donor” fobs be affected in any way?**

A: No. Any non-donor fobs paired to the vehicle are not affected by the F2. They will continue to function normally and can be used just as they were before the F2 was added.

**Q: Can I use the F2 to replace a fob that I take out of service?**

A: Yes. Simply back up the fob you want to replace, then select the F2 using the 3-press procedure. If you retire the donor fob afterward, the 3-press procedure becomes a one-time setup and won't be needed again.

**Q: I currently have more than one fob paired to the car. Can I create an F2 backup for each of them?**

A: Yes. But each F2 must be created from a different donor. This means as many as eight fobs can be paired to the car (4 donors, 4 F2's).

**Q: If the fob I am using as my primary (donor or F2) is lost or stops working, will the other one still work?**

A: Yes. Just switch to the other fob by pressing it 3 times near the car.

**Q: Can an F2 back up another F2?**

A: Yes, with a few caveats. If the F2 you want to use as a donor previously backed up another fob that is still in use, that fob will need to be taken out of service. Then, instead of holding both buttons down for the 10 seconds, press and hold the new F2 for at least 5 seconds BEFORE pressing the donor F2. For a simpler method of adding multiple F2s, see the next FAQ.

**Q: Can I make more than one backup F2 from a single donor?**

A: If you'd like to create multiple F2 backups from the same donor, just let us know when you place your order. We'll provide two F2s that can backed up a single donor fob at no additional cost..

**Q: How can I tell what frequency fob I need?**

A: Check the label on the back of your fob. If it says **RK116** or **RKY116**, you have a 315 MHz system. If it says **RK114** or **RKY114**, you have a 433 MHz system. Some fobs do not have an external label. In that case, open the fob and inspect the marking on the small metal can inside. A 315 MHz fob will typically be marked **R2622**, while a 433 MHz fob will typically be marked **R2632**.

If you're unsure which version you have, feel free to contact us and we'll be happy to help

**315 MHz**  
fobs:  
usually  
labeled  
"R2622"

**433 MHz**  
fobs:  
usually  
labeled  
"R2632"



Determining fob frequency

Comments? Questions? Drop us a line: [support@EZIMMOBLOCK.com](mailto:support@EZIMMOBLOCK.com). Or call: 860-271-1826