

*PCAR Products*



# F1 Master/Slave Key Fobs

All New Design for Ferrari 355,360,456,550 and 575

**Now with Built-In PIN Code Recovery!**

## User's Guide

Designed and Engineered by PCAR Products

Your *F1* fob is a modern redesign of the OEM Ferrari fob using state-of-the-art components that offer improved performance with the familiar look and feel of the original. The alkaline battery and problematic terminals of the original design have been replaced with a durable lithium coin cell featuring a 10-yr shelf life and capacity for over 30,000 operations.

The *F1* is guaranteed fully compatible with the Ferrari 355,360,456,550 and 575 OEM fobs and is available in Master, Master + Slave and Master + 2 Slave sets in 315MHz and 433MHz frequencies. If unsure what frequency you need see section: WHAT FREQUENCY DO I NEED or contact us for assistance.

## USING YOUR *F1*

Before using the *F1*, you need to program it to your immobilizer. To do this, you will need your car's 4-digit PIN code and then follow the procedure in your Owner's Manual.



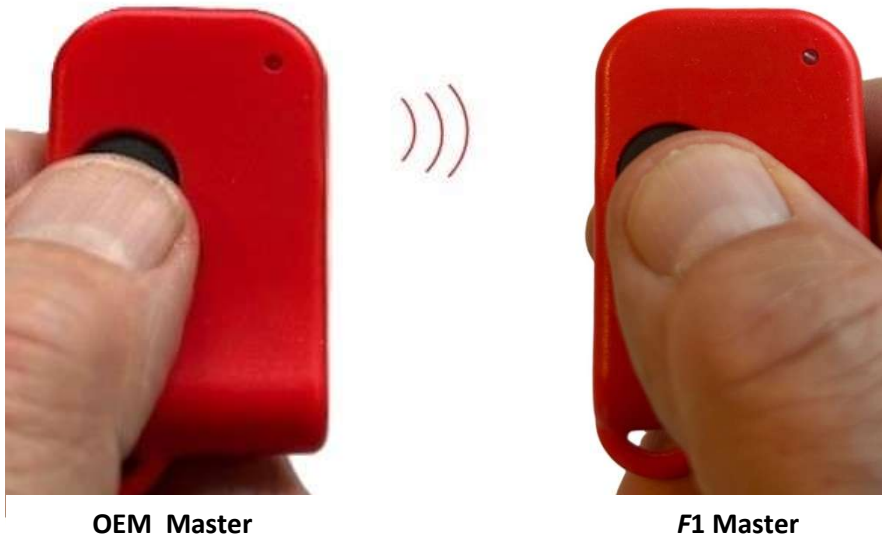
**If you don't know your PIN code the *F1* Master can retrieve it from your Master in seconds.**

If you *don't* have a Master to retrieve it from, consider our *F2* "Self-Programming" fob that doesn't need programming or PIN code.

## BONUS FEATURE: PIN CODE RETRIEVAL

An exclusive feature of the *F1* Master is its ability to retrieve the PIN code from another Master. If you have a Master that's paired to your car, it contains the PIN you need to program your new *F1* Master and slaves. If you've lost it, here's the easy way to retrieve it (see video in Ad) :

- **Move out of range of the car**<sup>1</sup>
- Hold your OEM Master fob in one hand and the *F1* Master in the other.
- Press and hold both buttons down until the *F1*'s LED starts flashing<sup>2</sup>.
- Release both buttons
- When the flashing stops, count the number of LED flashes in each of the 4 groups that follow.
- Write the number down. This is your pin. (10 flashes = 0.)
- If you miss a count, repeat the procedure.



<sup>1</sup> If you do this close to the car you will trigger the panic alarm. This is normal when a fob is pressed for more than 3 seconds to indicate owner is in danger. If you do trigger the alarm, reset it by simply pressing the fob for an additional 3 seconds.

<sup>2</sup> Some aftermarket fobs automatically stop transmitting before retrieval completes. If you are retrieving the PIN from an aftermarket Master, press the *F1* for at least 5 seconds *before* pressing the aftermarket Master, then continue holding both down until the *F1* flashes.

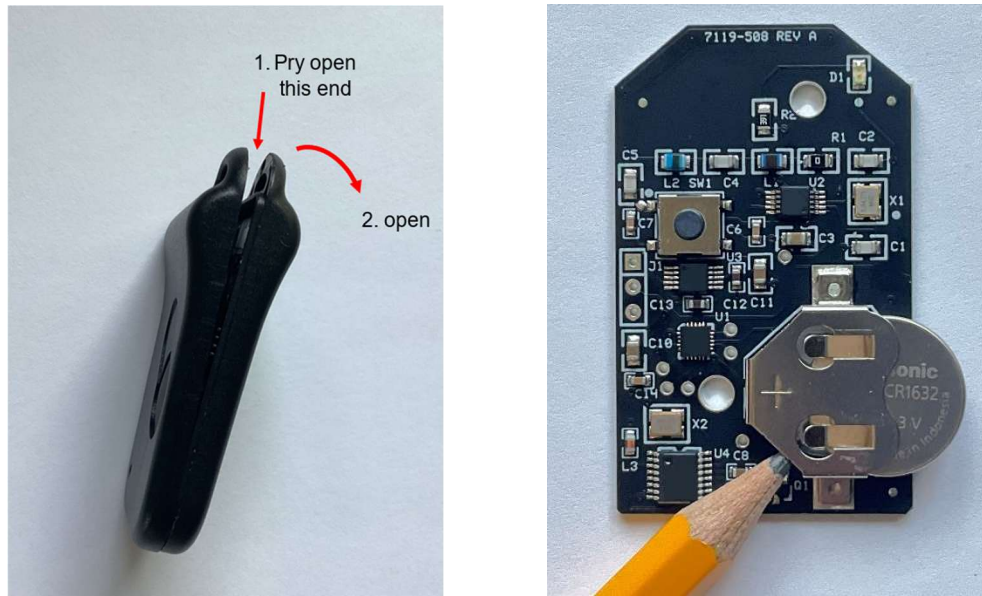
The *F1* comes in a housing identical to the OEM housing:



## BATTERY SERVICING

The F1 is powered by a supplied CR1632 lithium coin cell. Good quality cells typically have a 10-yr shelf-life and capacity for over 30,000 operations. Replace only with name-brand cells such as Panasonic, Toshiba, Murata, Energizer, etc. (Lesser-known brands vary significantly in quality and capacity).

To replace the battery, remove the Phillips screw on the back and use a fingernail to carefully pry the case open at the key ring end:



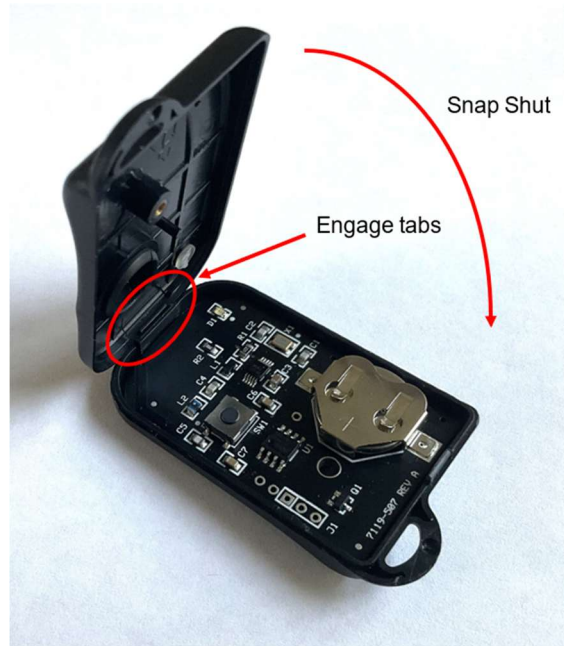
Remove the board from the case and push the old battery out from the side. Avoid contacting electrical components. (This is a good time to inspect the battery contacts and clean if necessary). Install the new battery + side UP.



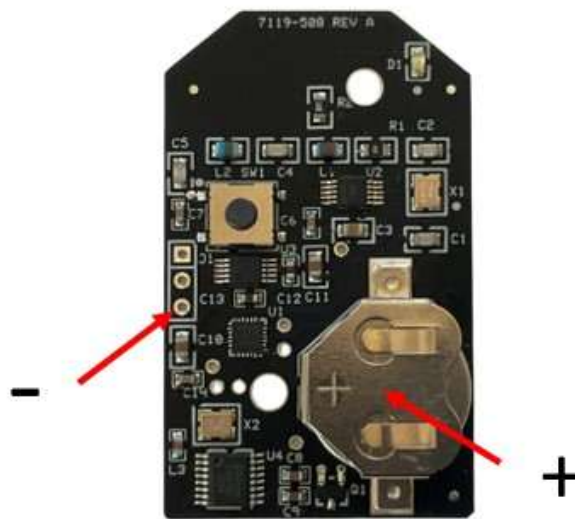
### CAUTION

Installing the battery upside down will short it out and reduce its capacity. While the battery may still function, we recommend replacing any battery that has been installed backwards to ensure maximum life.

Before closing the case, press the button and make sure the LED illuminates. If OK, close the case by engaging the tabs as shown, and snap it shut. Re-install the screw.



If the LED does not illuminate, check that the battery is good and is installed "+" side up. The battery must be greater than 2.0 v. To get a valid reading you must measure it while the button is held down. Note: when the battery reaches end-of-life, the F2 will automatically stop transmitting and the LED will not illuminate.



## FOB Range

Users often ask, "How far away will my F1 work?" The honest answer is that range depends on a number of factors, including the fob itself, the immobilizer, battery condition, how the fob is held, vehicle orientation, and even the surrounding environment.

A more useful question is, "How does the F1 compare to my current fob?" Based on feedback from owners, the F1 consistently delivers better range than OEM fobs and, in some cases, up to four times the range of certain aftermarket alternatives.

We'd love to hear about your experience and how your F1 performs in the real world.

## TROUBLESHOOTING

**Q: When I tried to retrieve the PIN code from a Master, the F1's LED stayed on and never flashed.**

**A:** Possible reasons:

1. Your OEM Master may not be transmitting or may be transmitting a weak signal. Make sure your Master fob locks and unlocks the car. If the car doesn't respond, the F1 won't either. Check the OEM Master's battery and make sure the fob contacts are clean.
2. Your Master may be transmitting at a different frequency than the F1 Master. Make sure the F1 Master matches the frequency of your OEM Master.
3. The Master may be an aftermarket model that stops transmitting before the PIN retrieval completes. Follow the normal procedure but delay pressing the Master for at least 5 seconds after pressing the F1 Master.
4. The F1 Master's button was released before the retrieval completed. Make sure the F1's button is held down continuously - even a momentary release will abort the process.

**Q: When I tried to retrieve the PIN code from an OEM Master, the F1 Master's LED flashed 5 times but instead of displaying the PIN, flashed only 1 time.**

**A:** The F1 has already retrieved the PIN from another Master and will not retrieve PIN from a different Master.

**Q: When I tried to retrieve the PIN code from an OEM Master, the F1's LED didn't flash, it just went out after 10 seconds.**

**A:** The fob you are trying to retrieve the PIN from is not a Ferrari Master.

**Q: How can I tell if a fob is a Master?**

**A:** There is no way to tell from appearance. Fob cases and boards get swapped all the time. A red case is no guarantee the fob is a Master.

**Q: When I retrieved the PIN code, why did the car alarm go off?**

**A:** This is the factory "Panic Function". It's triggered when a fob is pressed for more than 3 seconds to indicate owner is in danger. To prevent this, retrieve your PIN away from the car. If the alarm does go off, reset it by pressing your fob for another 3 seconds.

## WHAT FREQUENCY DO I NEED?

North American market vehicles all use 315MHz fobs. Most other countries use 433Mhz. Check the label on the back of your fob. If it says "RK116" or "RKY116" you have a 315MHz system. If it says "RK114" or "RKY114" you have a 433MHz system. If your fob doesn't have a label, open the case and look at the label on the small metal can. On 315MHz fobs it will normally be labeled "R2622". On 433MHz fobs it will normally be labeled "R2632". If you have any questions, let us know.

**315 MHz**  
fobs:  
usually  
labeled  
"R2622"

**433 MHz**  
fobs:  
usually  
labeled  
"R2632"



Determining fob frequency

## WHICH F1 SET SHOULD I ORDER?

When you program fobs you always have to program THREE fobs: 1 Master and 2 slaves. You can reuse any slaves you have, but you cannot re-use your master. What you need to order depends on what you have:

If you have....	F1 set to order
1 Master only	3-fob set
1 Slave only	2 fob set
1 Master + 1 slave only	2 fob set
2 Slaves only	1 Master

## FAQs

### Q: Which Ferraris are the *F1*'s compatible with?

A: The *F1* is backwards compatible with all Ferrari 355, 360, 456, 550 and 575 models.

### Q: Can I retrieve the PIN code from an aftermarket Master?

A: Yes. Any Ferrari-compatible Master fob for the above models can have its PIN retrieved by the *F1* Master as long as it's the same frequency. (See Note 2 under PIN Code Retrieval section)

### Q: After I retrieve the PIN from my OEM Master, can I retrieve the PIN from another Master?

A: No. The *F1* Master will only retrieve the PIN code from one Master. You can retrieve the PIN from the same Master as many times as you like by repeating the procedure.

### Q: Why do I need the PIN code?

A: You need that PIN to program fobs and to emergency start the car if the fob fails.

### Q: Can I mix *F1*'s and with other Ferrari-compatible fobs or must they all be one type?

A: You can mix and match. For example, if you currently have 2 OEM slaves, you can program those and an *F1* Master to make a complete set (provided you have the PIN). Remember: you always program THREE fobs: a new Master + 2 slaves, or the procedure will abort.

### Q: What do I do with the PIN that came with my *F1* Master?

A: Put it in a safe place. After you program the *F1* Master that is your new PIN code. You will need it to program fobs or emergency start your car. The old PIN will no longer work.

**Q: What if I lose the PIN that came with the F1 Master?**

A: If you are the original purchaser, we can look it up for you. Contact us for details.

**Q: How do I get the PIN if I don't have a Master to retrieve it from?**

A: It will have to be retrieved from the immobilizer. Contact us for details.

Questions? Drop us a line at: [support@EZIMMOBLOCK.com](mailto:support@EZIMMOBLOCK.com), or call: 860-271-1826