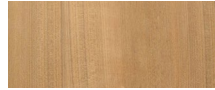


ORA

Ora_01 Dining chair

FRAME



Teak

SEAT



Silver Batyline

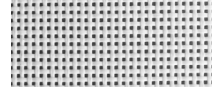
ACCENT



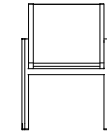
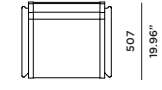
Brass



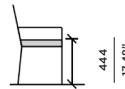
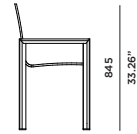
Teak - Burnt charcoal



White Batyline



23.42"



SPECIAL FEATURES



PROTECTIVE COVER



DESCRIPTION:

A hint of brass ensures the Ora can remain a piece of understated glamour. The Ora is Harbour's quite achiever, presenting subtle design features without over-stepping the mark. Unique angled legs with Brass touches, and Indonesian A-grade teak, are presented in this full seating range.

PROTECTIVE COVERS:

Protect your investment with water-repellent Sea-Sprae® fabric; protective backside coating, UV resistant.

SHIPPING AND DELIVERY:

Stock frames and stock cushions delivered in 1-3 weeks.
Stock frames with COM cushions delivered in 3-6 weeks.
Custom Orders delivered in 10-14 weeks.

WARRANTY:

FRAMES: 5 limited warranty on structural integrity.
MATERIALS: 2 year limited warranty.

TECHNICAL INFORMATION

TEAK:

100% plantation grown, premium A-Grade teak.

SERGE FERRARI BATYLINE * MESH:

Light diffusing, UV and mold resistant, PVC coated

SUNBRELLA *:

Solution-dyed, acrylic fiber, UV, water, and mold resistant outdoor fabric.

Net Weight: 8kg / 17.6 lb