

THE OREGON REPUBLICAN PARTY



THE PRECINCT COMMITTEE PERSON

**For the purpose of
Informing and Training the PCP**

*Release date: **Mar 2021, Rev A***

"The Oregon Republican Party recommends that each County's PCP Chair take advantage of using ORP recommended trainers, when at all possible, at the respective County Party levels."

INDEX

Introduction	page 3
The Founding Principles	page 4
The Republican Party – The Beginning	page 5
Core Values to Believe in	page 7
Oregon’s Official Political Parties	page 8
Republican Party Structure	page 9
State Executive Committee	page 11
Republican Party Leadership	page 12
Republican National Committee Officers	page 13
Oregon Congressional Districts (map)	page 14
Oregon Congressional Districts by County	page 15
Term Lengths	page 16
County Political Representation	page 17
Oregon House Members	page 18
Oregon Senate Members	page 20
Tips for Communicating with your Legislator	page 21
County Bylaws insert and ORP Bylaws link	page 22
Alternative Theories	page 23
The Great Lesson	page 24

COUNTY PCP TOOL KIT

The Precinct Committee Person [PCP]	page 26
Role, Responsibilities and Activities of the PCP	page 28
Neighborhood Engagement Number	page 29
PCP Oath of Office	page 30
Top 10 Duties of a PCP	page 31
Volunteer Opportunities and descriptions	page 33
Voter Databases	page 37
Tools Available	page 38
Get Out the Vote [GOTV] and After the Election.....	page 40
Local Leader Program	page 41
County Precinct Map	page 42
Building Your Precinct	page 43
Sample Precinct Letter	page 44
Mapping Your Precinct.....	page 45
Canvassing Your Precinct	page 46
PCP Techniques That Produce Positive Results	page 47
Primary Elections	page 48
Oregon Registration Requirements	page 49
When are Oregon Ballots Mailed	page 50
Resources and links	page 50

INTRODUCTION

The Republican Party exists because of a common belief in the strength of the individual. We espouse and practice respect for the right of the individual to determine his or her own destiny. Party members work to ensure that governments do not fall prey to collectivism as they administer our Constitutional Republic principles.

Our Constitution guarantees that the rights and freedoms of each individual are protected and are not lost to the bureaucracy of government. If we are to maintain our vigilance in protecting these constitutional rights, we must begin with the individual.

Precinct Committee Persons (PCPs) are the first building block in the foundation of the Republican Party. By creating a strong grassroots organization, the Republican Party can open doors to people within many local communities.

“You don’t win elections on Election Day. You win them by what you do all year round, by the day-to-day goodwill you generate in each precinct.” -- *Jake Avery, Chicago political boss*

YOU ARE IMPORTANT!

Your job as a Republican PCP is an extremely important one. In many respects, you are the Republican Party within your neighborhood. You represent the Republican voters in your precinct. You play a pivotal role in selecting and electing Republican candidates for a wide variety of responsible positions, ranging from United States Congress to city council to school board. You are the first, possibly, the most important link in the chain that makes up our representative form of government.

YOU CAN MAKE A DIFFERENCE

By becoming a PCP you have made a commitment to make a difference. You will share the ups and downs, the joy of victory and the agony of defeat. Most important of all, you will share the final sense of accomplishment that comes with electing good public officials, with making our Republic work effectively, and with making a difference.

BE FLEXIBLE

Remember, there is no single formula for success in the political arena. Your good judgment and knowledge of your individual precinct will be your guide in deciding which suggestions will work for you. Your goal is to help voters, inform voters, identify favorable voters, and get them to the polls.

EVERY REPUBLICAN VOTE COUNTS!
EVERY VOTE COUNTS!

THE FOUNDING PRINCIPLES ON WHICH THE UNITED STATES WAS FORMED

When we think of America, two words come to mind: Freedom and Liberty. We're well acquainted with the phrases "love of liberty", and "conceived in liberty". But what do these two words mean, are they still as relevant in 2017 as they were in 1776, and how do they relate to the founding principles?

Freedom and Liberty are often used interchangeably. In today's world we use the word freedom. The Founders preferred to use the word liberty.

Freedom – to us it suggests an open-ended sense of autonomy – we are free to do whatever we want, when we want. The Founders used the words within the context of constitutional and moral order. The Founders believed our freedoms to be bound in reasonable limits and cultural restraint thus **Liberty** to them meant balancing rights and responsibilities.

The constitution was born from a belief in liberty. The American Revolution was about the principles upon which our new nation was to be established. The Founders looked to permanent truths and natural law. They based the Constitution and the new American government on principles "applicable to all men and all times" *Abraham Lincoln*.

Ten Core Principles:

- liberty
- natural rights
- religious liberty
- rule of law
- self-government
- equality
- consent of the governed
- private property
- limited government
- independence

How many of these core principles are in the ORP Platform?

https://aa25e0d8-4b65-4802-b334-5ccc140f980a.filesusr.com/ugd/cf64a0_f38475c298454c92823a28f6c20e64d4.pdf



When we know & understand these principles we can renew America!

Expand your knowledge of America's founding principles at:

<http://origin.heritage.org/initiatives/first-principles>

THE REPUBLICAN PARTY – THE BEGINNING

The Republican Party was born in the early 1850's by anti-slavery activists and individuals who believed that government should grant western lands to settlers free of charge. On February 28, 1854, Major Alvan E. Bovay called a meeting in the Congregational Church in Ripon, Wisconsin, a small town northwest of Milwaukee. The men who met that night in that small farming community were called together in the common belief that slavery was unconstitutional.

Out of that meeting came a resolution:

“A new party, to be named the Republican Party, would be formed if the Kansas-Nebraska bill passed.”

They decided to call themselves Republicans because they professed to be political descendants of Thomas Jefferson's Democratic - Republican Party. The Kansas-Nebraska bill passed both House and Senate.

Following Senate passage, fifty-three local citizens gathered in the schoolhouse in Ripon. From that group they appointed a committee of five to form the new party.

The first official Republican meeting took place on July 6, 1854, in Jackson, Michigan.

The crowd was so great that it could not be held in the town's largest facility. Business had to be conducted outside in a grove of trees near the county racetrack.

The name “Republican” was formally adopted at that convention. At the Jackson convention, the new party adopted a platform and nominated candidates for office in Michigan. Organizational meetings soon followed in Iowa, Ohio, Maine, Massachusetts, New York, and other northern states. In the 1854 congressional elections, forty-four Republicans were elected to the House of Representatives, and eleven were elected to the Senate.

In June 1856, the Republican Party held a national nominating convention in Philadelphia. Senator John C. Fremont was nominated, under the slogan: “Free soil, free labor, free speech, free men, Fremont.” He received 33% of the popular vote, and was defeated by Democrat James Buchanan for the presidency.

Two days after the inauguration of Buchanan, the Supreme Court issued the Dred Scott decision which was denounced by Republicans. The Democrat party split over the slavery question. As a result, in 1858 the Republicans won control of the House of Representatives.

The second Republican national convention in 1860 resulted in the nomination of Abraham Lincoln for president. The platform pledged not to extend slavery, called for the construction of a transcontinental railroad, and supported a protective tariff. Lincoln's major opponents were Northern Democrat Stephen Douglas, Southern Democrat John C. Breckinridge, and Constitutional Union Party candidate John Bell. Lincoln won with only 39.8 Percent of the popular vote.










The Civil War erupted in 1861 and lasted four grueling years. During the war, against the advice of his cabinet Lincoln signed the Emancipation Proclamation that freed the slaves. The Republicans of the day worked to pass the Thirteenth Amendment, which outlawed slavery, the Fourteenth, which guaranteed equal protection under the laws, and the Fifteenth, which helped secure voting rights for African-Americans.

The Republican Party also played a leading role in securing women the right to vote. In 1896, Republicans were the first major party to favor women's suffrage. When the 19th Amendment finally was added to the Constitution, 26 of 36 state legislatures that had voted to ratify it were under Republican control. The first woman elected to Congress was a Republican, Jeanette Rankin from Montana in 1917.

Presidents during most of the late nineteenth century and the early part of the twentieth century were Republicans. The White House was in Republican hands under Presidents Eisenhower, Nixon, Ford, Reagan, George H.W. Bush, and George W. Bush. Under Ronald Reagan and George H.W. Bush, the United States became the world's only superpower, winning the Cold War from the old Soviet Union and releasing millions from Communist oppression.



CORE VALUES TO BELIEVE IN

-  the strength of our nation lies with the individual and that each person's dignity, freedom, ability, and responsibility must be honored.
-  equal rights, equal justice, and equal opportunity for all, regardless of race, creed, sex, age, or ability.
-  free enterprise and encouraging individual initiative have brought this nation opportunity, economic growth, and prosperity.
-  the government must practice fiscal responsibility and allow individuals to keep more of the money they earn.
-  the proper role of government is to provide for the people only those critical functions that cannot be performed by individuals or private organizations, and that the best government is that which governs least.
-  that the most effective, responsible and responsive government is government closest to the people.
-  Americans must retain the principles that have made us strong while developing new and innovative ideas to meet the challenges of changing times.
-  Americans value and should preserve our national strength and pride while working to extend peace, freedom, and human rights throughout the world.
-  the Republican Party is the best vehicle for translating these ideals into positive and successful principles of government.

If you agree with these core values then you believe in The Republican Party

OREGON'S OFFICIAL POLITICAL PARTIES

Republican Party [ORP]:

- Organized in Oregon in 1859
- Headquarters in Salem
- Believe in liberty, equality, individual freedom, personal responsibility, free markets, limited government by consent of the governed, the right to private property, rule of law, and freedom on religion.

Constitution Party [CON]:

- Organized in Oregon in 2000
- Believe in pro-life, against abortion

Democrat Party [DPO]:

- Organized in Oregon in 1859
- Headquarters in Portland
- Believe in social justice (*redistribution of wealth*), woman's right to abortion, basic human needs guaranteed by government, environmentalism

Independent Party [IND]:

- Organized in Oregon in 2007
- Believe in a grassroots, decentralized government
- goal is to win elections then identify their positions are & engage in public debate

Libertarian Party [LBT]:

- Organized in Oregon in 1971
- Believe in individual rights, free markets, liberty, freedom of speech and property rights

Pacific Green Party [PGP]:

- Organized in Oregon in 1992
- Believe in social justice (*redistribution of wealth*), environmentalism and nonviolence

Progressive Party [PRO]:

- Organized in Oregon in 2008
- Believe in social justice (*redistribution of wealth*) consumer advocacy, environmentalism, & worker's rights

Working Families Party [WFP]:

- Organized in Oregon in 2006
- Believe in unions, jobs, health care, education, energy/environment,
- Believe in political organization with unionism

Non-Affiliated Voter [NAV] is not associated with any political party

REPUBLICAN PARTY STRUCTURE

Voter
Precinct
Central Committee
Congressional District Committee
State
National

The Registered Party Voter:

- Elects fellow registered Republicans to represent them as a precinct committeeperson (PCP)

The Precinct:

- Smallest geographical division for the political party organization
- Each precinct has a minimum of two Precinct Committee Persons, based on one allowable Precinct Committee Person per every 250 Registered Republican Voters. Additional allowable Precinct Committee Persons are added after the minimum allowable per Precinct is met.
- Elected PCPs serve a two-year term & may be re-elected indefinitely
- PCPs may also be appointed by the county party's central committee

The County Central Committees:

- All elected & appointed county Republican PCP's comprise the Counties Central Committee
- The County Central Committees are the highest party authority in their county that has sole authorization to adopt rules/resolutions for all matters of county republican party government
- Central Committee assembles to elect any additional delegates to attend the Oregon State GOP Conventions & State Central Committee meetings
- Only Elected PCP's meet to elect local party officers: chair, vice chair, secretary, treasurer, delegates, and alternative delegates

The Congressional Districts:

- Oregon is comprised of five (5) Congressional Districts: CDs 1, 3-5 are located on the west side of the Cascade Mountains. CD2 is located mostly on the east side of the Cascade Mountains
- Boundaries of the Congressional Districts are redrawn following each US Census (every decade) in a process known as redistricting. The 2010 census results indicated Oregon was 42,000 people short of gaining a sixth congressional district
- The primary purpose of the Oregon GOP's congressional district's representatives is to assist counties and the state in electing Republicans into political office
- CD Chair and Vice-Chair serve on the ORP Executive Committee
- CD officers participate in planning the CD convention, which occurs every four years. The purpose of the CD convention is to elect the attending delegates and alternate delegates to the National Convention and the election of officers to the OR GOP congressional districts
- State Congressional Districts operate under ORP by-laws

The State Party (ORP):

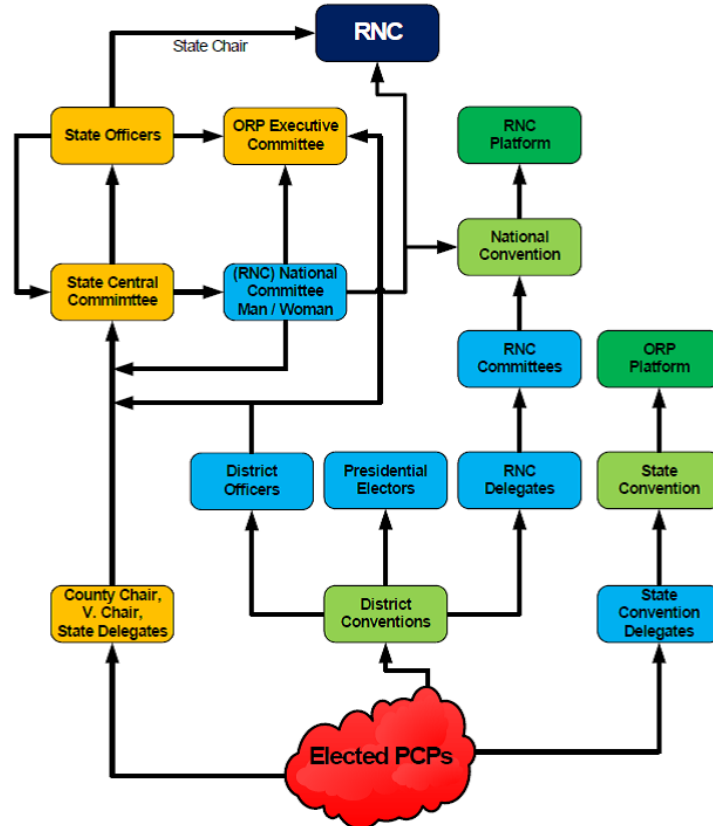
- The voting members of the Oregon Republican State Central Committee elect a state chair, vice chair, treasurer, secretary, serving a two-year term and the national committeeman, national committeewoman serving a four-year term
- Members work to elect Republicans to political office and promote conservative public policy, develop statewide programs and review/maintain party finances.
- The State Central Committee develops and votes on party rules, resolutions and the state party platform

The National Party (RNC):

- The Republican National Committee consists of three representatives from each state and the four US territories: party chair, national committeeman and national committeewoman
- The RNC serves as an umbrella organization providing continuity between election cycles
- Every four years, the RNC organizes the Republican National Convention where delegates from each state and territory nominate the Republican candidates for president and vice president, agree on the official Republican Party platform and adopt rules and procedures for the party.

REPUBLICAN PARTY ORGANIZATION

The Republican Party begins with people registering to vote as a Republican. An organization is needed to provide guidance and direction for the party. **The first building block** on the foundation of the Republican Party is the Precinct Committee Persons.



STATE EXECUTIVE COMMITTEE:

The Executive Committee voting members are:

The ORP officers, Chair and Vice Chair of each Congressional District, ORP Budget, Finance, Precinct Organization Chairs and elected Congressional and State leaders.

Chairman	Dallas Heard	chair@oregon.gop
Vice Chairman	Herman Baertschiger	vice.chair@oregon.gop
Secretary	Becky Mitts	secretary@oregon.gop
Treasurer	Dennis Linthicum	treasurer@oregon.gop
Committeeman	Solomon Yue	committeeman@oregon.gop
Committeewoman	Chris Barreto	Chris.Barreto@oregon.gop

CD OFFICERS:

CD1 Chair	Kevin Hoar	Kevin.hoar@oregon.gop
CD1 Vice Chair	Christian Honl	christian.honl@washco.gop
CD2 Chair	John Philo	jpphilo@gmail.com
CD2 Vice Chair	Suzan Ellis Jones	devilscanyonranch@wildblue.net
CD3 Chair	Kevin Moss	kevin_moss@frontier.com
CD3 Vice Chair	Jeff Reynolds	jefferyreynolds@comcast.net
CD4 Chair	Kathy Shindler	Kathy.Shindler@cd4oregon.gop
CD4 Vice Chair	Kathey Linn	Kathey.Linn@cd4oregon.gop
CD5 Chair	David Darnell	daviddarnellsr@gmail.com
CD5 Vice Chair	Jessica Davidson	Jessicaldavidson00@gmail.com

STATE COMMITTEE VOTING MEMBERS:

Finance Chair	Rod Schilling
ORP Precinct Organization Chair	Jodi Fleck

REPUBLICAN CONGRESSIONAL AND STATE ELECTED OFFICIALS:

Congressional House Republican	Rep. Cliff Bentz
Congressional Senate Republican	

State Senate Republican Leader	Fred Girod
State House Republican Leader	Christine Drazan

Oregon Republican Party 752 Hawthorne Ave NE Salem, OR 97301	Executive Director: executivedirector@oregon.gop
--	---

Phone:	503-595-8881	Fax:	503-697-5555
e-mail:	staff@oregon.gop	website:	https://oregon.gop/

REPUBLICAN PARTY LEADERSHIP

Note: information updated as of _____

COUNTY:

Chairman: _____
Vice-Chairman: _____
Secretary: _____
Treasurer: _____

Delegates, Alternate Delegates

Other County Organizational Committees –

[If this is a long list then can be added to appendices section of manual].

County information:

_____ County Republican Central Committee

Mailing address

City, State, Zip

Email:

website:

CONGRESSIONAL DISTRICT ____:

CD__ Chairman:
CD__ Vice Chairman:
CD__ Alternate Chairman:
CD__ Alternate Vice Chairman:
CD__ Secretary:
CD__ Treasurer:

STATE:

Chairman
Vice Chairman
Secretary
Treasurer
Committeeman
Committeewoman

NATIONAL:

Chairman
Vice Chairman
Secretary

REPUBLICAN NATIONAL COMMITTEE OFFICERS:

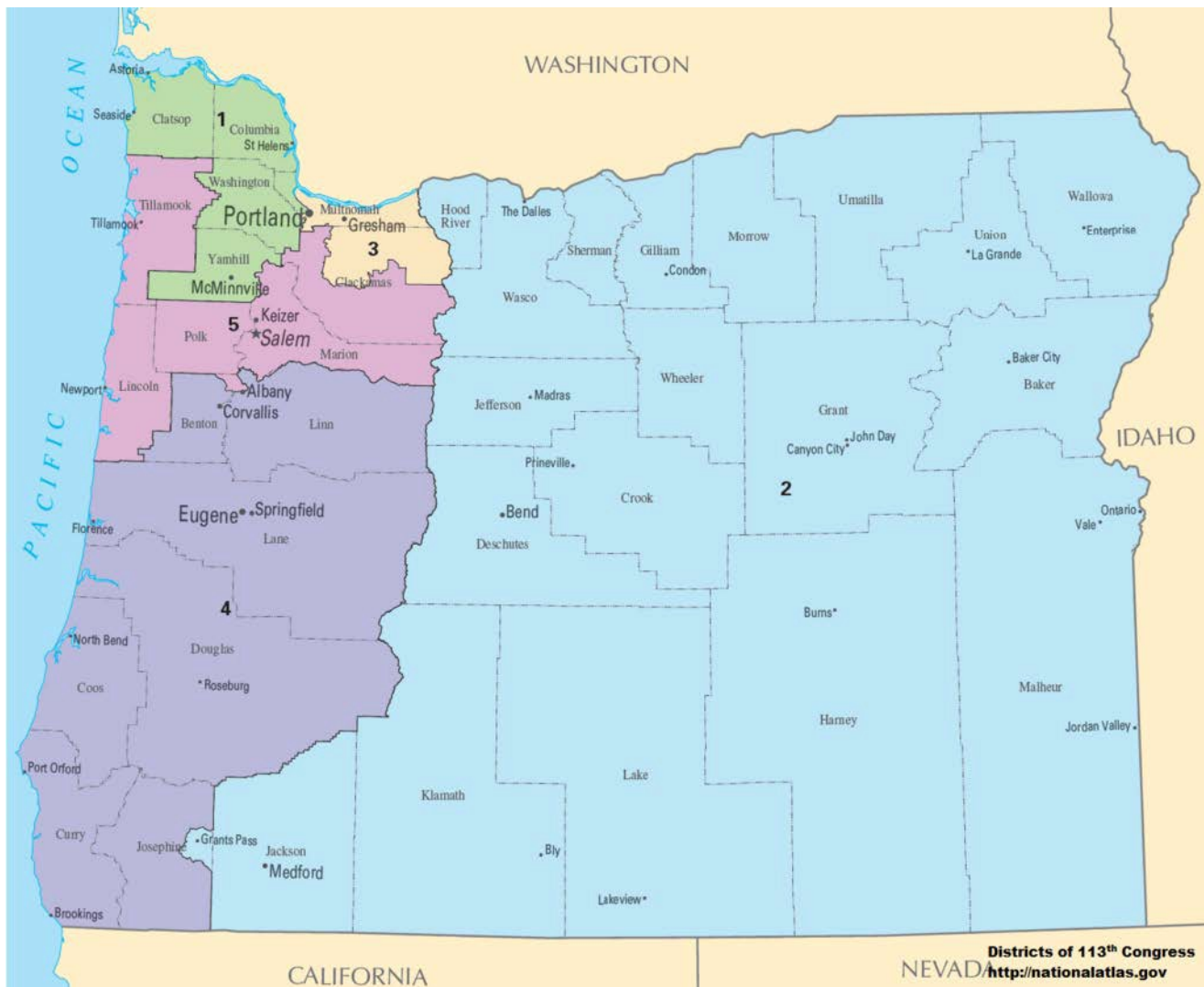
Chair	Ronna McDaniel
Co-Chair	Thomas Hicks Jr
Secretary	Vicki Drummond

RNC
310 First St SE
Washington DC 20003

Phone: 202-863-8500
website: www.gop.com
www.youtube.com/rnc

OREGON CONGRESSIONAL DISTRICTS

(2012 Redistricting Incorporated)



The 2010 census results indicated Oregon was 42,000 people short of gaining a 6th congressional district. The 2020 census will determine if Oregon gains another congressional district.

Oregon will most likely have an additional Congressional District at the next census.

OREGON COUNTIES AND CONGRESSIONAL DISTRICTS

Geographic Location – Statewide

<u><i>West Side of Cascade Mt. Range</i></u>	<u><i>East Side Of Cascade Mt. Range</i></u>
Benton – CD4, CD5	Baker – CD2
Columbia – CD1	Crook – CD2
Clackamas – CD3, CD5	Deschutes – CD2
Clatsop – CD1	Gilliam – CD2
Coos – CD4	Grant – CD2
Curry – CD4	Harney – CD2
Douglas – CD4	Hood River – CD2
Jackson – CD2	Jefferson – CD2
Josephine – CD2, CD4	Klamath – CD2
Lane – CD4	Lake – CD2
Lincoln – CD5	Malheur – CD2
Linn – CD4	Morrow – CD2
Marion – CD4, CD5	Sherman – CD2
Multnomah – CD1, CD3, CD5	Union – CD2
Polk – CD5	Umatilla – CD2
Tillamook – CD5	Wasco – CD2
Washington – CD1	Wallowa – CD2
Yamhill – CD1	Wheeler – CD2

TERM LENGTH

President and Vice President:	4 yrs	
U.S. Senators:	6 yrs	
U.T. Representatives:	2 yrs	
Oregon State Governor:	4 yrs	
Oregon Secretary of State:	4 yrs	
Oregon Treasurer:	4 yrs	
Oregon Attorney General:	4 yrs	
BOLI:	4 yrs	
State Senator:	4 yrs	
State Representative:	2 yrs	
Circuit Court Judges:	6 yrs	
ORP Executive Committee	2 yrs	
PCP	2 yrs	
National Committee man/woman	4 yrs	
CD Officers	4 yrs	
County Officers	2 yrs	
Most Special District	4 yrs	[some are only 2 yrs]
Most City Council	4 yrs	[some are only 2 yrs]

Note: U.S. Senate terms are staggered so that approximately one-third of all Senatorial seats are up for election every two years.

Only one U.S. Senate seat in each state is up for election at any one time except when a mid-term vacancy is being filled.

_____ COUNTY POLITICAL REPRESENTATION

Insert link to County Elections Office for list of County Elected Officials

U.S. Senate Senator Ron Wyden Senator Jeff Merkley

U.S. Congressional District _____ Representative _____
--

State Senate District Senator _____ R- _____	State House District _____ Representative _____ R- _____
---	---

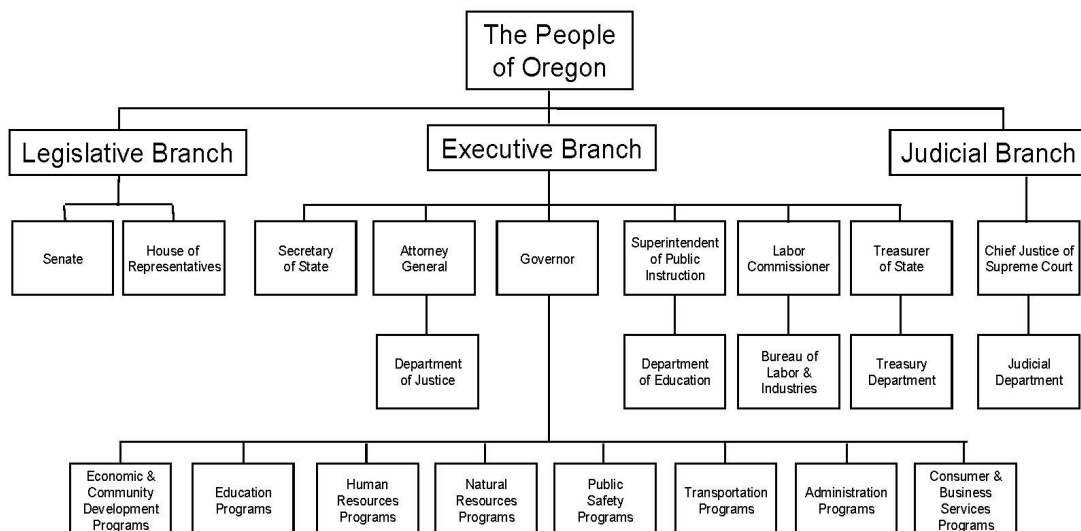
OREGON REVISED STATUTES

Chapter 248 — Political Parties; Presidential Electors

Will need to be downloaded and copied directly from the Oregon SOS website:

<https://sos.oregon.gov/elections/Pages/laws-rules.aspx>

STATE OF OREGON -- ORGANIZATION CHART



LAST NAME	FIRST NAME	DIST #	SESSION EMAIL	Capitol Phone
Alonso Leon	Teresa	22	Rep.TeresaAlonsoLeon@oregonlegislature.gov	503-986-1422
Bonham	Daniel	59	Rep.DanielBonham@oregonlegislature.gov	503-986-1459
Boshart Davis	Shelly	15	Rep.ShellyBoshartDavis@oregonlegislature.gov	503-986-1415
Breese-Iverson	Vikki	55	Rep.VikkiBreeselverson@oregonlegislature.gov	503-986-1415
Bynum	Janelle	51	Rep.JanelleBynum@oregonlegislature.gov	503-986-1451
Campos	Wlnsvey	28	Rep.WlnsveyCampos@oregonlegislature.gov	503-986-1428
Cate	Jami	17	Rep.JamiCate@oregonlegislature.gov	503-986-1417
Clem	Brian	21	Rep.BrianClem@oregonlegislature.gov	503-986-1421
Dexter	Maxine	33	Rep.MaxineDexter@oregonlegislature.gov	503-986-1433
Drazan	Christine	39	Rep.ChristineDrazan@oregonlegislature.gov	503-986-1439
Evans	Paul	20	Rep.PaulEvans@oregonlegislature.gov	503-986-1420
Fahey	Julie	14	Rep.JulieFahey@oregonlegislature.gov	503-986-1414
Gomberg	David	10	Rep.DavidGomberg@oregonlegislature.gov	503-986-1410
Grayber	Dacia	35	Rep.DaciaGrayber@oregonlegislature.gov	503-986-1435
Hayden	Cedric	7	Rep.CedricHayden@oregonlegislature.gov	503-986-1407
Helm	Ken	34	Rep.KenHelm@oregonlegislature.gov	503-986-1434
Hernandez	Diego	47	Rep.DiegoHernandez@oregonlegislature.gov	503-986-1447
Holvey	Paul	8	Rep.PaulHolvey@oregonlegislature.gov	503-986-1408
Hudson	Zach	49	Rep.ZachHudson@oregonlegislature.gov	503-986-1449
Kotek	Tina	44	Rep.TinaKotek@oregonlegislature.gov	503-986-1200
Kropf	Jason	54	Rep.JasonKropf@oregonlegislature.gov	503-986-1454
Leif	Gary	2	Rep.GaryLeif@oregonlegislature.gov	503-986-1402
Levy	Bobby	58	Rep.BobbyLevy@oregonlegislature.gov	503-986-1458
Lewis	Rick	18	Rep.RickLewis@oregonlegislature.gov	503-986-1418
Lively	John	12	Rep.JohnLively@oregonlegislature.gov	503-986-1412
Marsh	Pam	5	Rep.PamMarsh@oregonlegislature.gov	503-986-1405
McLain	Susan	29	Rep.SusanMcLain@oregonlegislature.gov	503-986-1429
Meek	Mark	40	Rep.MarkMeek@oregonlegislature.gov	503-986-1440
Moore-Green	Raquel	19	Rep.RaquelMooreGreen@oregonlegislature.gov	503-986-1419
Morgan	Lily	3	Rep.LilyMorgan@oregonlegislature.gov	503-986-1403

LAST NAME	FIRST NAME	DIST #	SESSION EMAIL	Capitol Phone
Nathanson	Nancy	13	Rep.NancyNathanson@oregonlegislature.gov	503-986-1413
Nearman	Mike	23	Rep.MikeNearman@oregonlegislature.gov	503-986-1423
Neron	Courtney	26	Rep.CourtneyNeron@oregonlegislature.gov	503-986-1426
Noble	Ron	24	Rep.RonNoble@oregonlegislature.gov	503-986-1424
Nosse	Rob	42	Rep.RobNosse@oregonlegislature.gov	503-986-1442
Owens	Mark	60	Rep.MarkOwens@oregonlegislature.gov	503-986-1460
Pham	Khanh	46	Rep.KhanhPham@oregonlegislature.gov	503-986-1446
Post	Bill	25	Rep.BillPost@oregonlegislature.gov	503-986-1425
Power	Karin	41	Rep.KarinPower@oregonlegislature.gov	503-986-1441
Prusak	Rachel	37	Rep.RachelPrusak@oregonlegislature.gov	503-986-1437
Rayfield	Dan	16	Rep.DanRayfield@oregonlegislature.gov	503-986-1416
Reardon	Jeff	48	Rep.JeffReardon@oregonlegislature.gov	503-986-1448
Reschke	E. Werner	56	Rep.EWernerReschke@oregonlegislature.gov	503-986-1456
Reynolds	Lisa	36	Rep.LisaReynolds@oregonlegislature.gov	503-986-1436
Ruiz	Ricki	50	Rep.RickiRuiz@oregonlegislature.gov	503-986-1450
Salinas	Andrea	38	Rep.AndreaSalinas@oregonlegislature.gov	503-986-1438
Sanchez	Tawna	43	Rep.TawnaSanchez@oregonlegislature.gov	503-986-1443
Schouten	Sheri	27	Rep.SheriSchouten@oregonlegislature.gov	503-986-1427
Smith	David Brock	1	Rep.DavidBrockSmith@oregonlegislature.gov	503-986-1401
Smith	Greg	57	Rep.GregSmith@oregonlegislature.gov	503-986-1457
Smith Warner	Barbara	45	Rep.BarbaraSmithWarner@oregonlegislature.gov	503-986-1445
Sollman	Janeen	30	Rep.JaneenSollman@oregonlegislature.gov	503-986-1430
Stark	Duane	4	Rep.DuaneStark@oregonlegislature.gov	503-986-1404
Wallan	Kim	6	Rep.KimWallan@oregonlegislature.gov	503-986-1406
Weber	Suzanne	32	Rep.SuzanneWeber@oregonlegislature.gov	503-986-1432
Wilde	Marty	11	Rep.MartyWilde@oregonlegislature.gov	503-986-1411
Williams	Anna	52	Rep.AnnaWilliams@oregonlegislature.gov	503-986-1452
Witt	Brad	31	Rep.BradWitt@oregonlegislature.gov	503-986-1431
Wright	Boomer	9	Rep.BoomerWright@oregonlegislature.gov	503-986-1409
Zika	Jack	53	Rep.JackZika@oregonlegislature.gov	503-986-1453

Republican Representatives are listed in **BOLD**

<https://www.oregonlegislature.gov/house/Lists/RepresentativeList/ListOfRepresentatives.aspx>

LAST NAME	FIRST NAME	DIST#	SESSION EMAIL	Capitol Phone
Anderson	Dick	5	Sen.DickAnderson@oregonlegislature.gov	503-986-1705
Beyer	Lee	6	Sen.LeeBeyer@oregonlegislature.gov	503-986-1706
Boquist	Brian	12	Sen.BrianBoquist@oregonlegislature.gov	503-986-1712
Burdick	Ginny	18	Sen.GinnyBurdick@oregonlegislature.gov	503-986-1718
Courtney	Peter	11	Sen.PeterCourtney@oregonlegislature.gov	503-986-1600
Dembrow	Michael	23	Sen.MichaelDembrow@oregonlegislature.gov	503-986-1723
Findley	Lynn	30	Sen.LynnFindley@oregonlegislature.gov	503-986-1730
Frederick	Lew	22	Sen.LewFrederick@oregonlegislature.gov	503-986-1722
Gelser	Sara	8	Sen.SaraGelser@oregonlegislature.gov	503-986-1708
Girod	Fred	9	Sen.FredGirod@oregonlegislature.gov	503-986-1709
Golden	Jeff	3	Sen.JeffGolden@oregonlegislature.gov	503-986-1703
Gorsek	Chris	25	Sen.ChrisGorsek@oregonlegislature.gov	503-986-1725
Hansell	Bill	29	Sen.BillHansell@oregonlegislature.gov	503-986-1729
Heard	Dallas	1	Sen.DallasHeard@oregonlegislature.gov	503-986-1701
Jama	Kayse	24	Sen.KayseJama@oregonlegislature.gov	503-986-1724
Johnson	Betsy	16	Sen.BetsyJohnson@oregonlegislature.gov	503-986-1716
Kenemer	Bill	20	Sen.BillKenemer@oregonlegislature.gov	503-986-1720
Knopp	Tim	27	Sen.TimKnopp@oregonlegislature.gov	503-986-1727
Lieber	Kate	14	Sen.KateLieber@oregonlegislature.gov	503-986-1714
Linthicum	Dennis	28	Sen.DennisLinthicum@oregonlegislature.gov	503-986-1728
Manning Jr.	James	7	Sen.JamesManning@oregonlegislature.gov	503-986-1707
Patterson	Deb	10	Sen.DebPatterson@oregonlegislature.gov	503-986-1710
Prozanski	Floyd	4	Sen.FloydProzanski@oregonlegislature.gov	503-986-1704
Riley	Chuck	15	Sen.ChuckRiley@oregonlegislature.gov	503-986-1715
Robinson	Art	2	Sen.ArtRobinson@oregonlegislature.gov	503-986-1702
Steiner Hayward	Elizabeth	17	Sen.ElizabethSteinerHayward@oregonlegislature.gov	503-986-1717
Taylor	Kathleen	21	Sen.KathleenTaylor@oregonlegislature.gov	503-986-1721
Thatcher	Kim	13	Sen.KimThatcher@oregonlegislature.gov	503-986-1713
Thomsen	Chuck	26	Sen.ChuckThomsen@oregonlegislature.gov	503-986-1726
Wagner	Rob	19	Sen.RobWagner@oregonlegislature.gov	503-986-1719

Republican Senators are listed in **BOLD**:

<https://www.oregonlegislature.gov/senate/Lists/SenatorList/ListOfSenators.aspx>

TIPS FOR COMMUNICATING WITH YOUR LEGISLATOR

When contacting your Congressman, Senator or Representative please consider following these guidelines:

- Prepare in advance with a pre-written draft before you call, email or write.
- Focus on one topic.
- Site the bill number and title.
- Be brief, be informed and to the point.
- Be clear on your expectations.
- Be POLITE and Respectful.

An example when calling, or emailing might be:

Hello, My Name is Mary Smith

I am from _____ County. I am calling Representative / Senator _____ today regarding HB_____.

I am Calling Representative / Senator _____ today to state;

As a voter of _____ County, I oppose the passing of this house bill. Neither Oregon nor the federal government has the funds for this project. I am asking Representative / Senator _____ to be fiscally responsible and to vote no on this bill.

It is recommended that you send a “Thank you” note to your legislator when they appropriately vote for a house or senate bill. This reinforces that you are keeping an eye on their voting record and that you appreciate their fiscal responsibility.

It is also recommended that you send a note to your legislator when they vote irresponsibly. When writing explain to your representative that our country needs fiscal responsible legislators who know the importance of a balanced budget and voting for house and senate bills that have the voter’s best interests at heart.

OLIS – follow your bill:

<https://olis.leg.state.or.us/liz/2017R1>

COUNTY BY-LAWS

Insert your county by-laws appendices location here

ORP By-Laws

https://aa25e0d8-4b65-4802-b334-5ccc140f980a.filesusr.com/ugd/2875f5_2c1c5bb5fdd7458baadc14b3714ff4be.pdf

*Inserted documents can be listed in an appendix and referenced 19-A, 19-B, or 19-1, 19-2, etc.
to preserve the main document page numbering.*

Appendix documents can easily be updated without recreating the basic manual.

ALTERNATIVE SOCIO-ECONOMIC/POLITICAL THEORIES

SOCIALISM: Is an economic and political theory based on public or common ownership and cooperative management of the means of production and allocation of resources.

In a socialistic society there is no private property. The means of production are owned and controlled by the state (government). Socialists advocate a method of compensation based on individual merit or the amount of labor one contributes to society. Socialists believe that capitalism unfairly concentrates wealth and power among a small segment of society which then controls capital and derives its wealth through a system of exploitation. Socialists argue that this creates an unequal society that fails to provide equal opportunities for everyone to maximize their potential in the interests of the public. Socialists characterize full socialism as a society no longer based on coercive wage-labor, but organized on the basis of relatively equal power-relations rather than hierarchical, bureaucratic forms of organization in the productive sphere.

MARXISM: Is the fundamental ideology of communism, it holds that all people are entitled to enjoy the fruits of their labor but are prevented from doing so in a capitalist economic system, which divides society into two classes: non-owning workers and non-working owners. Marx called the resulting situation "alienation," and said that when the workers repossessed the fruits of their labor, alienation would be overcome and class divisions would cease.

The Marxist theory of history posits class struggle as history's driving force, and it sees capitalism as the most recent and most critical historical stage — most critical because at the end of the capitalistic stage the proletariat will at last arise united. Marxism was the ideological and socioeconomic theory developed by Karl Marx and Friedrich Engels.

COMMUNISM: Is a sociopolitical structure that aims for a classless and stateless society with the communal ownership of property. Decisions on what to produce and what policies to pursue are made in the best interests of the collective society with the interests of every member of society given equal weight in the practical decision-making process in both the political and economic arenas of life. Modern theory views communism as an authoritarian government that centrally plans the economy, and ownership of all means of production.

Communism is considered to be a branch of socialism. Karl Marx believed that the working class were the main producers of wealth in society and were exploited in the capitalist system. Workers needed to overthrow the capitalists in order to establish his free communist society. Once accomplished, class or racial division would be eliminated. Thus communism is the utopian idea of a free society with no division or alienation, and man is free from oppression and scarcity, a society free of government, countries, and class.

Karl Marx never provided a detailed description as to how communism would function as an economic system, but it is understood that a communist economy would consist of common ownership of the means of production, culminating in no private ownership of capital; including property.

THE GREAT LESSON!

An economics professor at a local college made a statement that he had never failed a single student before but had once failed an entire class.

That class had insisted that Obama's socialism worked and that no one would be poor and no one would be rich, a great equalizer.

The professor then said, "OK, we will have an experiment in this class on Obama's plan".



All grades would be averaged and everyone would receive the same grade so no one would fail and no one would receive an A...

After the first test, the grades were averaged and everyone got a B. The students who studied hard were upset and the students who studied little were happy. As the second test rolled around, the students who studied little had studied even less and the ones who studied hard decided they wanted a free ride too so they studied little.

The second test average was a D! No one was happy.

When the 3rd test rolled around, the average was an F.

As the tests proceeded, the scores never increased as bickering, blame and name-calling all resulted in hard feelings and no one would study for the benefit of anyone else.

All failed, to their great surprise, and the professor told them that socialism would also ultimately fail because:

when the reward is great, the effort to succeed is great
but when government takes all the reward away, no one will try or want to succeed

Could it be any simpler than that – even Democrats should be able to understand this simple concept!

*As the late Adrian Rogers said,
"You cannot multiply wealth by dividing it."*

_____ COUNTY REPUBLICAN PARTY

THE PRECINCT COMMITTEE PERSON

PCP TOOL KIT

Tools You Can Use

**For the purpose of
Informing and Training the PCP**



THE PRECINCT COMMITTEE PERSON [PCP]

The term “Committee Person” refers to an office, not a person, so can be any gender.

PRECINCT COMMITTEE PERSON:

The PCP is the foundation of the Party. As a PCP you are the ground troops, the grass roots for the success of the party.

A PCP is the only party official elected directly by the party voters. To be a Republican PCP, an individual must be 18 years old and a registered Republican in their respective Oregon County for 180 days.

PRECINCT:

The smallest geographical division for political party organization, _____ County has ____ precincts.

IT'S EASY TO BECOME A PRECINCT COMMITTEE PERSON [PCP]

1. Elected Candidate:

- PCPs are elected/re-elected every two years during the even-year Primary Elections.
- Gender Identity has been eliminated.
- There is one PCP for every 250 voters, with a minimum of 2 PCPs per Precinct.
- The date to Calculate number of PCPs per Precinct is 251 days before the Primary Election.
- The first day to file is 250 days before the primary election.
- A Person can file in any Precinct, within their Resident House District in their Resident County.
- Write-in votes will only be tallied if Declaration (SEL-105D) or Nomination (SEL-105N) Forms have been filed by the deadline, which is **the day of the Election at 8:00 PM**.
- The advantage to filing an SEL-105 Form prior to the March deadline is your name is published on the Official Primary Ballot for the Republican Party, which provides for more organic votes.
- A minimum of three Republican voters **in your filed Precinct** must vote for you.
- A PCP's term of service is from the 24th day after the primary election until the 24th day after the date of the next following primary election (ORS 248.015).

A. SEL-105 Candidate Filing Form

- Deadline to file is sometime in March by 5PM – date is based off the election day.
- Must be a member of stated Party at least 180 days prior to the filing deadline, per ORS 249.046.
- A Certificate of Election will be issued.

B. SEL-105D Write-in Candidate Declaration

- If you miss the SEL-105 filing deadline, the SEL-105D filing deadline is 8PM election day.
- Must be a member of stated Party at least 180 days prior to the Primary Election, per ORS 248.015(4).
- No write-in acceptance form will be issued, as candidate has attested they will serve if elected. If elected, a Certificate of Election will be issued.

C. SEL-105N Write-in Candidate Nomination

- Deadline to file is Election Day by 8PM
- Must be a member of stated Party at least 180 days prior to the Primary Election, per ORS 248.015(4).
- Candidate will be sent a write-in acceptance form, if elected. If acceptance form is received by deadline, a Certificate of Election will be issued.
- Nominator and candidate must be a member of the same Party and the same State Representative House District, within the same County.

2. Elected Candidate by Write-in:

- If the filing deadline has passed you can launch a write-in campaign by filing an SEL-105D by 8PM the night of the Primary Election date.
- You will need a minimum of three eligible voters FROM THE PRECINCT you are running in to write-in your OFFICIAL name on their ballot – this is important, so make sure your voters know how to correctly enter your name.
- If elected, a Certificate of Election will be issued.

3. Appointed Individual:

- A typical county may have Precincts without any Precinct Committee Person because no one has filed to run. Check with your County Chair to determine those openings.
- Your County Central Committee may appoint registered republicans to fill vacant PCP seats according to ORS 248.026.
- You must complete and submit a “PCP Appointment Application” to your County Chair.
- Depending upon your County’s Bylaws, your County Central Committee approves PCP Appointments.
- Once approved, individuals should receive a Notice of Appointment from their County Elections Office or your County Chair.
- Elected and appointed PCP information should be forwarded to the ORP to keep the state database current.
- Appointed PCP’s are subject to internal voting restrictions per ORS 248.026.

ROLE, RESPONSIBILITIES AND ACTIVITIES OF THE PCP

Role – a function assumed by someone

It is the role of the Precinct Committee Person (PCP) to represent the Republican Party at the grassroots level for fellow registered Republican voters in the PCP's respective precinct.

Responsibility – obligation one is accountable for

As a PCP **YOU** are the most important person in the Republican Party.

PCPs are the eyes, ears, and voice of the party. Of all the registered voters in your precinct you have the greatest influence on the results of elections. You have the power to direct the outcome of elections to ensure the values of Republicans are reflected in public policy and political office.

A strong and effective local party looks to its active and motivated PCPs to perform the work of the party.

A few hours a month is all it takes to create a strong precinct.

These few hours allow you to build a rapport with registered Republicans within your precinct so that they will recognize you as their contact person on political issues & candidates.

Activities – action or task required by one's position

- Stay politically knowledgeable of city, county, state and national political issues
- Attend and participate in County Central Committee meetings
- Elect county party leadership and delegates to the State Conventions and State Central Committee meetings
- Vote on official party business and resolutions of local concern
- Participate in nominating replacement legislators for appointment by the county commissioners and replacement Republican nominees if candidates withdraw after the primary

Additional Activities:

- Participate in formulating policy
- Participate in recruiting party volunteers
- Support Republican candidates and elected Republican representatives
- Volunteer for candidate campaigns:
- Door to door
- Phone calling
- Letters to editor
- Fundraising
- Participate in campaign kick-off events & elected representatives' "Town Hall" events
- Become fully knowledgeable of your precinct and the voters in your precinct
- Register voters, update voter lists, and participate party activities by participating in :
- Get-Out-The-Vote drives
- Fundraising and community events: parades, fairs, home shows...
- Participate in party work committees

This is a long list from which you can choose however many tasks you are able to commit to the _____ County Party.
Remember - most all listed activities are spread throughout the year.

NEIGHBORHOOD ENGAGEMENT NUMBER

Neighborhood Number = N

How many Engagements per Hour = E

How many hours per month = N

$N \text{ divided } E \text{ divided } N = NEN$ (How many months)

N = 200 neighbors (How many neighbors you have adopted)

E = 25 engagements (How many households you can reach in one hour)

N = 2 hrs (How many hours per month can you spend contacting your adopted neighbors)

200 neighbors divided by 25 houses per hour divided by 2 hrs spent per month = 4 months to engage with all 200 adopted neighbors for one touch.

250 neighbors divided by 25 houses per hour divided by 2 hrs spent per month = 5 months to engage with all 250 adopted neighbors for one touch.

To LESSEN the amount of time to accomplish one touch per adopted neighbor, you will need to INCREASE the number of hours spent per month volunteering doing your neighborhood engagement.

OATH OF OFFICE FOR PRECINCT COMMITTEE PERSONS

I _____, do pledge to participate in the activities of a Precinct Committee Person to the best of my abilities.

Suggested activities are listed in the Oregon Republican Party Precinct Committee Handbook and the Bylaws of the _____ County Republican Central Committee.

- Represent the voters of my precinct in Central Committee meetings to the best of my ability.
- Volunteer as needed in the local Republican County party headquarters.
- Support the election of Republican candidates.
- Uphold the principles and public policies in accordance with the Oregon Republican Party Platform.
- Serve my office with distinction, honesty, and integrity.
- Support and defend decisions made by the _____ County Republican Central Committee, to the best of my ability, where lawful votes are cast by majority, regardless of my personal opinion or vote.
- Preserve and protect our nation's founding Constitutional principles, that being:

**... Life, Liberty, and the Pursuit of Happiness as One Nation under God,
with Liberty and Justice for all.**

Sign _____

Date _____

TOP 10 ACTIVITIES OF A PCP

"Elections are won or lost in the precincts."

A PCP is a Precinct Committee Person.

PCPs serve for two years as a Republican Party representative in their own neighborhood.

State law specifies in ORS 248.015 *The term of office of a precinct committee person is from the 24th day after the date of the primary election until the 24th day after the date of the next following primary election.* There is a PCP position for every 250 voters registered in your precinct.

PCPs support Republican candidates after the Primary Election.

You are the eyes, ears, and legs for candidates in your precinct. You play a critical role in selecting and electing Republican candidates for a wide range of positions from the local school board to US Congress. You'll be asked to volunteer on various campaigns in your area.

PCPs are the "grass roots base" of the Republican Party.

You are the liaison to the County Party organization. This is a year-round commitment, which entails certain responsibilities; the most important is to keep in touch with your Republican neighbors. Recruit and train volunteers whenever possible. Maintain and update a database of the Republican voters in your precinct with phone numbers and e-mail addresses when possible.

PCPs canvass their precinct going door-to-door

PCPs pass out literature for candidates and the Party, as well as talking to voters. Walking lists can be obtained from your County Party or the local county elections department.

PCPs register voters.

This can be done at events or just handing out voter registration cards in your neighborhood.

PCPs identify voters.

Lots of voters consider themselves Republicans but are not registered with the Party. Phone calls and personal contacts are good ways to identify which issues are hot buttons for them and whether they are likely to vote Republican. This information can be put in a database and used later for special mailings and other projects.

PCPs help Get Out The Vote [GOTV].

Without votes, even the best Republican candidates can't win. Making sure voters turn in their ballots by Election Day is the most crucial job you have as a PCP. GOTV drives include phone banks and door-to-door. These efforts are especially urgent in the final days before the ballots are due.

PCPs participate in fundraising activities.

They are often asked to volunteer at events sponsored by the local or state parties. Money is

the mother's milk of politics.

PCPs attend meetings of the county Republican Central Committee.

You need to attend the county party's organizational meeting (held in November of even-numbered years) to elect party leadership. Other county meetings are also held throughout the year to formulate policy and develop strategies.

PCPs need to be flexible.

There is no magic formula for success. Use your best judgement to inform voters and get them to cast a favorable ballot for Republicans.

"You don't win elections on Election Day. You win them by what you do all year around, by the day-to-day goodwill you generate in each precinct."

—Jake Avery, Chicago political boss

Powers of the Precinct Committee Person

1. Friendly access to neighbors.

Most people are eager to know more about their government and the people who run it. When you introduce yourself as their "Republican Precinct Committee Person," they assume you have something to say. You can provide them with information on candidates and issues.

2. Respect from elected officials.

Since a Precinct Committee Person represents, on average, 250 voters, and has the power to vote for other Party officials and to make endorsements of candidates, any call or letter from a Precinct Committee Person gets the attention of elected officials.

3. Launching pad for other offices.

You would be amazed at how many of our Presidents, Senators, Congressmen, and state and local officials started as a Precinct Committee Person, and still serve as Precinct Committee Person even though they hold a higher elected office. That is because they know the power of a Precinct Committee Person.

4. Party Platform and policies.

At the state, district, and county levels and conventions, the Precinct Committee Person is an active player. He participates in the adoption of the Party Platform and policies, support of or opposition to issues.

VOLUNTEER OPPORTUNITIES

Volunteer Information:

First, middle, last

Address 1

Address 2

City, State, Zip

Home / Mobile

Work / Other

E-mail 1

E-mail 2

Facebook Page [Personal or Business]

Twitter

Occupation

Skills

Additional Skills

When are you available to volunteer?

Morning Afternoon Evening
Best day[s] of week: _____

Our Most Important Needs [some committees]

- ☐ Campaign / Candidate assistance
[walking, phone banks]
- ☐ Voter Integrity [registration, elections]
- ☐ Staff Booth at Events
- ☐ Event Planning [Meetings, Fundraisers]
- ☐ Publicity [Newsletters, Social Media –
Facebook, Website, Twitter, etc.]
- ☐ Office Assistance [staff, organizational]
- ☐ Citizen Outreach
[hosting a neighborhood gathering]
- ☐ Youth Outreach
[connecting with young voters]
- ☐ Research
- ☐ Database Resources
 - ☐ GOP Data Center
 - ☐ Advantage
 - ☐ VIBE
- ☐ Legislative Updates / Bills [OLIS]
- ☐ Run for Local Elections:
[School, water fire boards, city council,
County office, etc.]

Please return to your local County Central Committee

A. Help Candidates

- Walk
- Phone
- Map coordination
- Data entry after walks and phoning

B. Voter Integrity

- Recruit Volunteers
- Ensure integrity of all ballots
- Coordinate election observers
- Report abnormalities to Executive Committee & State Voter Integrity Chair

C. Events

- Work at booths at rallies, fairs, events, etc.
- Contact people to purchase tickets
- Contact businesses for in-kind contributions

D. Event Planning

- Organize fund raising events
- Help plan events such as fundraising and voter registration events
- Help implement events
- Work on decorations
- Work on securing locations
- Work on getting sponsors
- Work on in-kind donations

E. Publicity

- Publicize activities of the Central Committee
- Use traditional media
- Work on Website
- Work on social media
- Work on press releases
- Make signs
- Have a presence at rallies
- Work on rebranding

F. Office Help

- Receptionist
- Office Manager
- Calendar for office use

- Set up and take down
- Cleaning
- Refreshments
- Literature and supplies
- Calling for meetings – specific lists
- Data entry

G. Voter Registration, Your Outreach

- Go to high schools and speak to classes
- Go to college groups
- Go to church groups
- Organize outreaches
- Contact new move-ins
- Man booths at events

H. Research

- Research national events
- Research statewide events
- Research county or local events
- Prepare reports for Central Committee meetings
- Prepare reports for House District meetings

I. Database

- Maintain data in any of the electronic data storage systems
- Equip others to maintain an adequate support unit
- Maintain up-to-date lists of volunteers
- Maintain up-to-date lists of signs
- Maintain up-to-date lists of donors
- Maintain up-to-date lists of PCPs
- Maintain attendance and records and coordinate with secretary

J. Education

- Update manual on the principles of the Constitution
- Hold meetings for new PCPs to go over the principles
- Educate PCPs on major issues
- Educate PCPs how to communicate with elected officials and government effectively
- Educate on the use of petitions
- Educate how to communicate effectively on Facebook
- Educate on how to contact representatives
- Educate how to hardwire a precinct

- Educate how to phone, walk, and hold meetings to reach out to neighborhood
- Educate how to get on committees, volunteer, and associations
- Educate who are associations that can help with our causes.

K. Issues

- Define issues of the day
- Propose policy positions for county party and candidates
- Work with Publicity Committee to disseminate the issues
- Define criteria for candidates to earn support from MCRP via the Candidate Assistance and Recruitment Committees

L. Precinct Organization

- Locate persons willing to be appointed as PCPs
- Conduct ongoing voter registration by canvassing, work at booths etc.
- Work with candidates on getting out the vote
- Implement phone canvasses
- Make walking lists
- Work at rallies
- Work at Ballot Chase procedures
- Assist PCP Chair
- Schedule events for your HD
- Follow-up on PCPs activities
- Coordinate and develop precinct activities
- Review and update PCP manual

M. Candidate Recruit

- Help locate qualified and willing candidates
- Equip candidates to run for office
- Equip campaign managers for candidates
- Equip finance managers for candidates
- Formulate plans to provide material support, such as volunteer coordination
- Formulate data management
- Formulate campaign strategy

N. Rules

- Update statute-compliant changes
- Work with committee to add or change bylaw proposals by the Executive Committee

VOTER DATABASES

There are numerous voter databases available to candidates & to Republican Party PCP's:

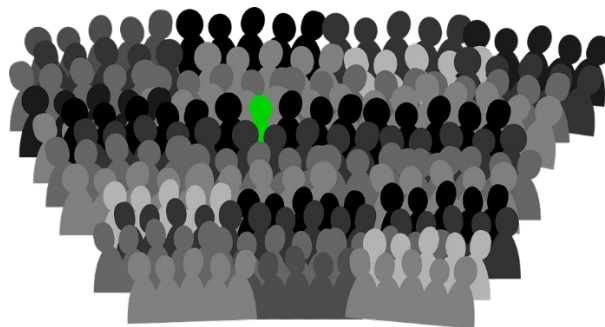
- The Republican Party has their own database - GOP Data Center
- Often candidates will use a different database than the ORP approved database

Contact your County Precinct Committee Chair/Liaison/Coordinator or Party Chair to determine the steps necessary to use the current database to help you in your PCP duties.

- Authorization to access the Republican Party's voter database is approved by the County Chair and provided by the Oregon Republican Party.
- An access request form must be completed and sent to the ORP office.
- There is a use, exchange and confidentiality agreement that must be signed which explains authorized uses of the system, use of the data and penalties should an individual violates the agreement.

The most frequent use of party database information by PCPs is for:

- ✓ Identifying a voters party affiliation
- ✓ Call lists
- ✓ Walking list of an entire precinct
- ✓ Walking list by neighborhood within a precinct
- ✓ Newly registered Republicans



TOOLS AVAILABLE:

Here's a brief description of each tool:

GOPDC:



- GOP Data Center is a powerful query and data management tool that interfaces with the RNC's 300+ terabytes of data and over 20 years of voter contact data to provide campaigns and organizers with on-demand access to the RNC's expansive voter warehouse.
- The RNC provides access to Data Center free of charge to all Republican candidates up and down the ballot.

Advantage:

- Advantage provides voter contact services at the local, state, and national levels.
- Advantage interfaces with GOPDC
- This mobile app facilitates voter ID, get out the vote, and follow-up fundraising.
- **Advantage is only active during a general election cycle**

Supporting

Doors & Events Election Day VoIP Phone Banking Fundraising

Comprehensive Reporting
Integration with Other Vendors

(Phone, Web, Grassroots)

Advantage

Poll Watcher

Red Dialer

Feature	User level 1	2	2 Comm Capt	3
Full Access to Mobile Apps	•	•	•	•
Standard view of reports on volunteer website	•	•	•	•
Can See Volunteers only Within the Group		•	•	•
Can Assign Work (Walk & Call Lists)		•	•	•
Can Create New Volunteers (User Level 1 & 2) and update	•	•	•	•
Elevated view of reports on volunteer website			•	•
Can See All Volunteers				•
Can Create New Volunteers (User Level 3) and update				•
Can Create Groups/Victory Centers				•
Can Import & Export Voter				•
Can Export Reports and Voter Lists				•

VIBE:

Welcome to the ORP Online Collaboration Tool!

This tool is designed to facilitate teamwork and progress on the work your organization does every day.

- Better communication, coordination, and collaboration help us all work together, within and across teams.
- Use of the secure areas of this tool is limited to Oregon Republican organizations, their affiliates and partners.

Here are some of the ways this tool can make your organization more effective:

- Store, view and **share files** in real time (meeting minutes, planning documents, voter lists, etc.)
- Provide **training resources** on demand (videos, manuals, instructions, best practices, etc.)
- Create and track **projects and tasks**
- Make and view **comments** on your work
- Exchange and discuss **ideas and materials**
- Know what's happening and **stay informed**

Contact your County Chair to request access to any of these tools.

Support contact information:

GOP Data Center: Kathy.Shindler@outlook.com
Advantage

VIBE: team@oregon.gop

Websites and Facebook page links:

ORP: <https://www.oregon.gop/>

Inside Scoop: <https://www.oregon.gop/insidescoop>

ORP PCP information page

<https://www.facebook.com/groups/OregonRepublicanPCPs/>

Captive Audience: <https://www.youtube.com/channel/UCPLZgifD9CCwK-Hf9QNN1tg>
Past videos

GET-OUT-THE-VOTE

Without votes even the best Republican candidate can't win. Therefore, the Get-Out-The-Vote drive on the days leading up to the election is one of the most important jobs you have as a PCP. The best GOTV drives involve checking the lists of people who have voted, and making phone calls to make sure they have returned their ballots. GOTV drives are conducted state-wide. A group of volunteer callers (often called a bank) gather in a room with phones. For the most part GOTV volunteers are making calls to friendly Republican or Independent voters as they are fellow Republicans.

Pre-Election

Personal phone calls from local citizens starting several weeks or so before the election are the most effective incentive for increasing voter turnout. Volunteer callers simply contact voters that have been identified as Republicans. Callers identify themselves, remind voters of the election and urge them to vote. As the ballots are returned to the County Clerk's office, only those who have not voted remain on the list and are called. This continues until Election Day.

DO NOT FORGET THESE VOTER POPULATIONS:

- ✓ Weak Republicans
 - ✓ Swing voters
 - ✓ Weak Democrats
 - ✓ Independent voters
 - ✓ Non-affiliated voters
-
- We win on measures that affect households state-wide and cross party lines.
 - Political issues that are local will get voters to return their ballots.
 - Know your local issues and local elected officials.

AFTER THE ELECTION

You have had many people in your precinct helping you, and whether we win or lose you will want to contact each one individually or in small groups to thank them for their hard work. Encourage them to remain active in the Republican Party, to build for the future of the community and our country. You should conduct an after action assessment, critiquing the organization & plans as well as the conduct of the various election activities.

- ✓ What went well resulting in meeting goals set?
- ✓ What didn't work and needs to be tossed or replaced?
- ✓ Where can improvements be made prior to the next election?

All volunteers should be asked for their input.

As you move into the non-election year, remember you are still a PCP. Continue to participate in the _____ County Central Committee, and other Republican Party activities. Increase your knowledge. Keep in touch with your volunteers—you and the Republican Party will need them in the next election year.

Local Leader Program - Voter Science Canvasser for PCPs

Local Leaders make a difference right where they live, where they have the most influence and time to nurture relationships that could last a lifetime.

Local Leader Program provides tools to PCPs to begin reaching out to a manageable group Republicans and other conservative voters in their immediate neighborhood. PCPs using this tool will be able to update contact information, make notes about voter contact and the data is retained election after election and year after year. PCPs will have access to their neighborhood list and a map of the households that can be accessed on a computer or through a Mobile App for your phone.

This tool will help PCPs:

- Get Out the Vote on Elections – Ballot Chase. During the last two weeks of an election, you will be given real-time voter information to remind people to turn in their ballot.
- Recruit Volunteers and new PCPs
- Register people to vote
- Invite neighbors to Republican events, forums and candidate meet and greets
- Get petitions signed

Testimonial

“I discovered that I had Republican neighbors who lived close to me and who cared. That gave me hope and it also made me realize that I could make a difference, just by reaching out to them. ... The app on my cell phone is so easy to use, guiding me to the houses on my list in real time! ... This program proves that we all have the power to make a difference! It just takes a pair of sneakers and your patriot passion to save our great country!” Marti

Local Leader Training

- **LL 101 – New PCP’s or PCP’s new to LL**
- **LL 201 – Returning PCP’s – What’s new**
- **LL 301 – County Representatives and District Leaders – Mapping Training**

Sign up today!

Contact Melissa Laird at localleaders@washco.gop

--- COUNTY PRECINCT MAP

INSERT COUNTY PRECINCT MAP HERE

BUILDING YOUR PRECINCT

GOAL:

Your overall goal as PCP is to ensure that every voter in your precinct who supports Republican candidates and conservative policies votes on Election Day. To successfully meet this, a PCP must accomplish the responsibilities and duties already identified.



To do this you will need to know your precinct like the “back of your hand”.

- Know your neighborhoods
- Know your businesses
- Know your public entities (schools churches etc.)
- Know your voter profiles in your precinct
- Get to know & understand your Republican and conservative voters as much as possible
- Become the political “expert” for your voters in your precinct
- Become the “go to person” for advice on party affairs and political questions

DEVELOP A CALENDAR AND TIMETABLE:

Accomplishing the tasks of a PCP will be more manageable if you identify goals and develop a calendar and timetable to meet your goals.

The Calendar should include:

- dates fixed by state law such as primary election day, general election day
- party activity dates such as your central committee meetings, county fair, fundraising events
- precinct tasks like voter contact, party literature drops, candidate assistance activities

The Timetable should include:

- target dates for accomplishing each of your precinct tasks like voter registration drive, precinct canvass, volunteer recruitment, PCP recruitment

In developing the time table, start with the date the activity must be accomplished. Next determine the tasks that must be accomplished to make the activity a success. Work backwards from the accomplishment date to determine what needs to be done, the time it takes to do it, and how many people are needed to get it done. Once you've developed the steps necessary to accomplish your task, mark the day you need to begin and end; setting interim goals to help you stay on track.

SAMPLE PRECINCT LETTER



Date

Dear Neighbor,

I am sending this letter to you for three reasons:

- The first is to introduce myself as your recently elected Republican Precinct Committee representative.
- Second, I want you to know why I have become actively involved in the Republican Party.
- Third, I want to answer any questions you may have for the upcoming election and share with you important election news and information about Republican candidates.

I was elected during the May primary election (or appointed to fill the position) [use which ever applies] of precinct committee person for our precinct. This is a volunteer position with the task of being your local contact for election information and information about our conservative candidates. You can contact me by (provide contact information) and I will be happy to help you.

I decided to become a PCP and be active in the party because our county and state needs informed citizen voters. We have the ability to “turn things around” for the good of our county, the good of our community and the good of our children and grandchildren. If as conservatives we do not make our voices heard, especially by voting, we will suffer even graver consequences than we do today.

Because of our governor and the Portland controlled Legislature we’re faced with increasing taxes, increased government intrusion in our lives, increased health care costs, and a humiliating global influence that threatens our basic rights.

In the upcoming election your vote will be more critically needed than ever. I welcome your concerns and comments. If you want to become more involved, receive info about candidate events or would like to join the team to Get Out The Vote (GOTV) for our County, feel free to contact me.

Sincerely,

Your Precinct Committee Person

MAPPING YOUR PRECINCT

A precinct map showing every house in your precinct is very useful when organizing your precinct.

As PCP your job is to know the various houses within the boundaries as to political affiliation. You should become an authority on the geographic area you represent. The map will help you when door-to-door, creating walking-lists, and spotting those who have voted and those who have not voted on Election Day.

HOW TO MAP A PRECINCT

- Secure a precinct map.
- Secure a precinct data list of your precinct. This data is available via the GOP Data Center
- This is the basis for starting your contact information
- Keep the map up to date. An updated and complete precinct map will be an excellent resource for you around election time.

RESOURCES AVAILABLE:

- Precinct map – from county or party
- County Precinct Voter Counts Report, available via the GOP Data Center
 - Provides you with information about the numbers of voters/precinct/party
- Voter Walking List
- Voting History
 - Voters by precinct, residential & mailing address, DOB, election participation. Options include voted, did not vote, all voters, current election, all elections, specific election.
- Talk to your County PCP Program Chair or County Party Chair for assistance and help in obtaining baseline maps from which to start your mapping.

Tip: if you are one of several PCP's in your precinct, divide your precinct into sub-areas and assign one PCP's to each sub-area.

If you are using GOPDC, Advantage, Local Leaders and/or VIBE and need assistance:

- GOP Data Center Kathy.Shindler@outlook.com
 - Advantage
- VIBE: team@oregon.gop
- Local Leaders: localleaders@washco.gop

CANVASSING YOUR PRECINCT

Canvassing is a systematic process of direct contact with a target group of voters. Canvassers knock on residential doors within the precinct and interact face-to-face with voters. Canvassing may also be performed by telephone/cell phone. Canvassing your precinct allows you to turn out the largest vote during the election and allows you to know who the Republicans in your precinct are. Many times elections depend not on how many registered party voters there are but who does a better job of getting their supporters to the polls.

Purpose:

- ❖ Identify how people intend to vote
- ❖ Identify voters in your precinct by party affiliation
- ❖ Find and register unregistered voters in your precinct
- ❖ Distributing party materials and candidate printed materials
- ❖ Party and campaign visibility
- ❖ Recruit Republican volunteers from registered Republicans
- ❖ Fundraising

Canvassing To Do's:

- ❖ Be brief
- ❖ Listen
- ❖ Be friendly
- ❖ Answer as many questions as possible
- ❖ Confine yourself to general party principles and not specific issues
- ❖ Indicate if asked that the Republican precinct organization is at the SERVICE of each voter
- ❖ Leave your name and contact information for their use
- ❖ Make notes after your canvas to share at your next county meeting so all can learn from each other

Canvassing Don'ts:

- ❖ **Never** begin the conversation with polarizing questions!
- ❖ **Never** engage in controversial issues
- ❖ **Never** argue
- ❖ **Never make derogatory remarks** about:
 - other party organizations
 - any candidates regardless of party
 - a Republican officer

Mom said it best: "If you can't say something nice don't say anything at all"

Finally, be prepared to answer the most frequently asked questions of voters & leave them material, especially your contact information, as mentioned above. Provide additional contact information such as your Precinct or House District Captain if you are unable to answer a question.

PCP TECHNIQUES THAT PRODUCE POSITIVE RESULTS

Face to face contact with voters is the best way to influence their vote or remind voters of the importance of upcoming elections.

Phone calls are the next best alternative, and will still increase Republican participation in elections:

- Introduce yourself as the person's elected PCP
- Be ready to explain what a PCP is & does
- Have a crystal clear vision of the goals you want to achieve during the call
 - Identify the talking points you want to cover
- Be time sensitive; keep the call as short as possible unless the receiver wants to talk then prepare for the time you are willing to spend & have your "call exiting speech" perfected.
- Be ready to leave "voice mail"
- Engage in positive self-talk prior to each call.
 - Think success & think BIG.
 - This can help give you a confidence boost right before making the call.
 - For most individuals, calls get easier each phone call you make

E-mail is less effective, but much better than no contact at all.

Social Media: Today, the hottest medium in all of politics is the social web... tools like Facebook, Twitter, LinkedIn and YouTube are becoming an increasing focus of campaigns at all levels, from water board to the State or National Senate. Wise candidates and campaigns consider integrating social media campaigning into the rest of their campaign plan. As a PCP, you may become a part of driving the campaign message using social web tools.

Other possibilities:

Send a post card to voters in your Precinct and include your website and social media information.

Send a letter to 25 close relatives friends and business contacts in support of candidates, be they local, state, or national. Ask your friends to do the same: a political chain letter. This can effectively increase a candidate's visibility because people know and trust you. Be brief, let them know why you are voting for the candidate and enclose candidate material.

CAUTION: This must be done within the confines of friendship or some sort of ties outside your PCP status and outside your Precinct as PCP are required to stay neutral during primary elections when several individuals within the Party are running for the same office.

All PCP's should make some type of contact with Republicans in their precinct before an election.

- Before the Primary or Special District Elections
- Before the General Election

Note: *contacts can be easier if you recruit volunteers or combine contact methods.
Most of all plan, plan, and plan, have fun and use your own unique skills*

PRIMARY ELECTIONS

Primary elections are too **often ignored by voters** who are overtaxed with daily work, family and outside activities. In primary elections each party votes on candidates who want to run for the general election. Often times several individuals within the party will compete for their party's nomination. In these cases it is extremely important that party voters research each candidate's beliefs and what each candidate stands for. Candidate forums are valuable as they are an excellent opportunity to see, listen to and ask questions of each candidate. Remember - the winner of the party primary election, if elected in the General Election, will represent you.

Thus Primary Elections should be considered the Most Important Step in the General Election.

Methods of Candidate Selections:

In Oregon we use the primary election process. Other states do not have primary elections but select candidates through caucuses, conventions or nomination meetings.

Types of Primaries:

- Closed Primary: Registered voters from each party select their candidates (Oregon).
- Open Primary: Registered voters from all recognized parties select the candidates.
- Semi-closed Primary: Registered voters are required to request a specific party's ballot.
- A run-off Primary: All parties participate. Top two candidates selected, regardless of party, run.

The more open the system, the greater the chance of raiding, or voters voting in the other party's primary, in hopes of getting a weaker opponent chosen to run against a strong candidate in the general election. Raiding election has proven stressful to the relationships between political parties, who feel cheated by the system, and election officials, who try to make the system run as smoothly as possible.

Some political thinkers believe our recognized American Primary system has a greater impact on the candidate than the voter. They believe that the method utilized, be it open or closed, dictates the methodology incorporated to run a campaign. These thinkers believe that in a closed system a candidate must cater to their party's strong partisans during the primary (those who tend to lean to the most conservative or liberal ends of the ideological spectrum) and then move to the center in the general election in order to capture votes across party lines. This may be old school thinking now that more voters across the country have rejected the political parties and are now registered independent or non-affiliated.

OREGON REGISTRATION REQUIREMENTS

Registration Deadlines

If this is your first time registering in Oregon, your registration card must be submitted or postmarked no later than the 25th day before the election in which you intend to vote.

Updating Your Registration

You need to update your registration information by filling out and submitting a new registration card if:

- Your residence address has changed
- Your mailing address has changed
- Your name has changed
- Your signature has changed
- You wish to change your political party affiliation

**RECOMMEND EVERYONE VERIFY THEIR VOTER REGISTRATION
BEFORE EACH ELECTION CYCLE**

Registration Requirements

You must meet the following requirements to register:

- You are a permanent resident of Oregon
- You are a citizen of the United States
- You are 16 years old

If you are 16 years of age, you will not receive a ballot until an election occurs on or after your 18th birthday.

<http://sos.oregon.gov/voting-elections/Pages/my-vote.aspx>

WHEN ARE OREGON BALLOTS MAILED?

Oregon Ballots are Distributed (Mailed) According to State Statute: Oregon Revised Statutes or ORS

ORS 254.470

- **local ballots**
 - ❖ always mailed 21 days before an election

ORS 253.045 - ORS 253.065 and ORS 254.470

- **out of state ballots**
 - ❖ always mailed 45 days before the upcoming election

and ORS 253.065

- **long term absentee**
 - ❖ includes out of county and all military
 - ❖ always mailed 45 days before the upcoming election
 - ❖ if the 45th day falls on a weekend, ballots are mailed the Friday before the 45th day

Link to Oregon Secretary of State, Elections Division

<http://sos.oregon.gov/voting-elections/Pages/default.aspx>

Link to County Clerk Office, Elections Division

Insert local county link

Resources / Links:

Oregon State Legislature:

<https://www.oregonlegislature.gov/>

Senators:

<https://www.oregonlegislature.gov/senate/Lists/SenatorList/ListOfSenators.aspx>

Representatives:

<https://www.oregonlegislature.gov/house/Lists/RepresentativeList/ListOfRepresentatives.aspx>

OLIS – follow your bill:

<https://olis.leg.state.or.us/liz/2017R1>

https://www.oregonlegislature.gov/citizen_engagement/Pages/How-an-Idea-Becomes-Law.aspx