

iH o o o m e



## **ABOUT US**

Founded in 2017, iHooome is an original design manufacturer and trusted partner to globally recognized brands, creating modernist home collections with distinct aesthetic fusion.

Our designs integrate diverse global inspirations into contemporary narratives, supported by iterative R&D processes that refine every detail. We ensure product excellence and on-time delivery through rigorous quality control, precision craftsmanship, and a reliable supply chain. Offering adaptable collaboration models from volume production to flexible customization, we deliver high-margin collections where artistic innovation consistently meets commercial success.



## JENGA

Drawn from the layered form of clouds in the sky—warm, relaxed, and boundless. Integrating soft sculpture into the design, rounded curves and full volumes create a visually stress-relieving atmosphere.



W102xD100xH74cm    SH42cm    SD64cm



## ELEANORE

After rain, the mountain forest shrouded in mist—Eleanore's design originates from the designer's sketching trip. With fluffy upholstery and a warm wooden frame, it's a perfect collaboration of rustic nature and modern aesthetics.

W190xD108xH82cm SH40cm SD68cm



## SKYLER

If freedom had a form, Skyler would be its embodiment. The moment you settle in, you experience what “boundless freedom” means. As your body lifts off the ground, it feels as light and free as being in outer space.



W86xD108xH82cm SH40cm SD62cm





## PEACH

Inspired by the cotton candy we bought from street vendors in childhood. The designer aims to break the stereotype of traditional seating with this soft and soothing form, making furniture not only functional but also an extension of emotion.



W105xD92xH82cm SH44cm SD62cm



## FANNY

Inspired by the warm winter sunlight and the comfort of being wrapped in a puffy down jacket. The soft appearance offers not only visual comfort but also physical and mental relaxation—a warm home becomes a true shelter.



W235xD96xH75cm SH45cm SD70cm



**FANNY**



## DARLENE

Inspired by a comforting hug. The designer hopes to create a small utopia that heals all bad moods. Within this soft embrace, you'll feel deeply relaxed and secure.



W95xD110xH71cm SH40cm SD61cm



## WHOOSH

Design inspiration comes from flowing water in nature. Incorporating rhythmic curves into modern furniture, the elegant ergonomic lines provide just the right support for the waist and back—a perfect blend of modern aesthetics and practicality.



W68xD98xH80cm SH40cm SD60cm



## NORA

The Nora stool is a geometric deconstruction of classical Roman architectural elements like arches and columns. The seat consists of two strip cushions, complemented by textured solid wood legs. Its form and finish strike a balance, blending classic and contemporary appeal.



W66xD45xH45cm



## KAREN

The Karen armchair is filled with a plush, soft padding and features a grid-like pattern of intersecting lines that divide the surface into checkered sections. Much like a fluffy waffle, it presents an irresistibly cozy and lazy feel.



W66xD75.5xH76cm

SH43cm SD52cm





## DENINSE

The Densine lounge sofa takes inspiration from the Bézier curve. A single, elegantly winding piped edge traces its full and robust silhouette, giving the whole design a lively and playful character.

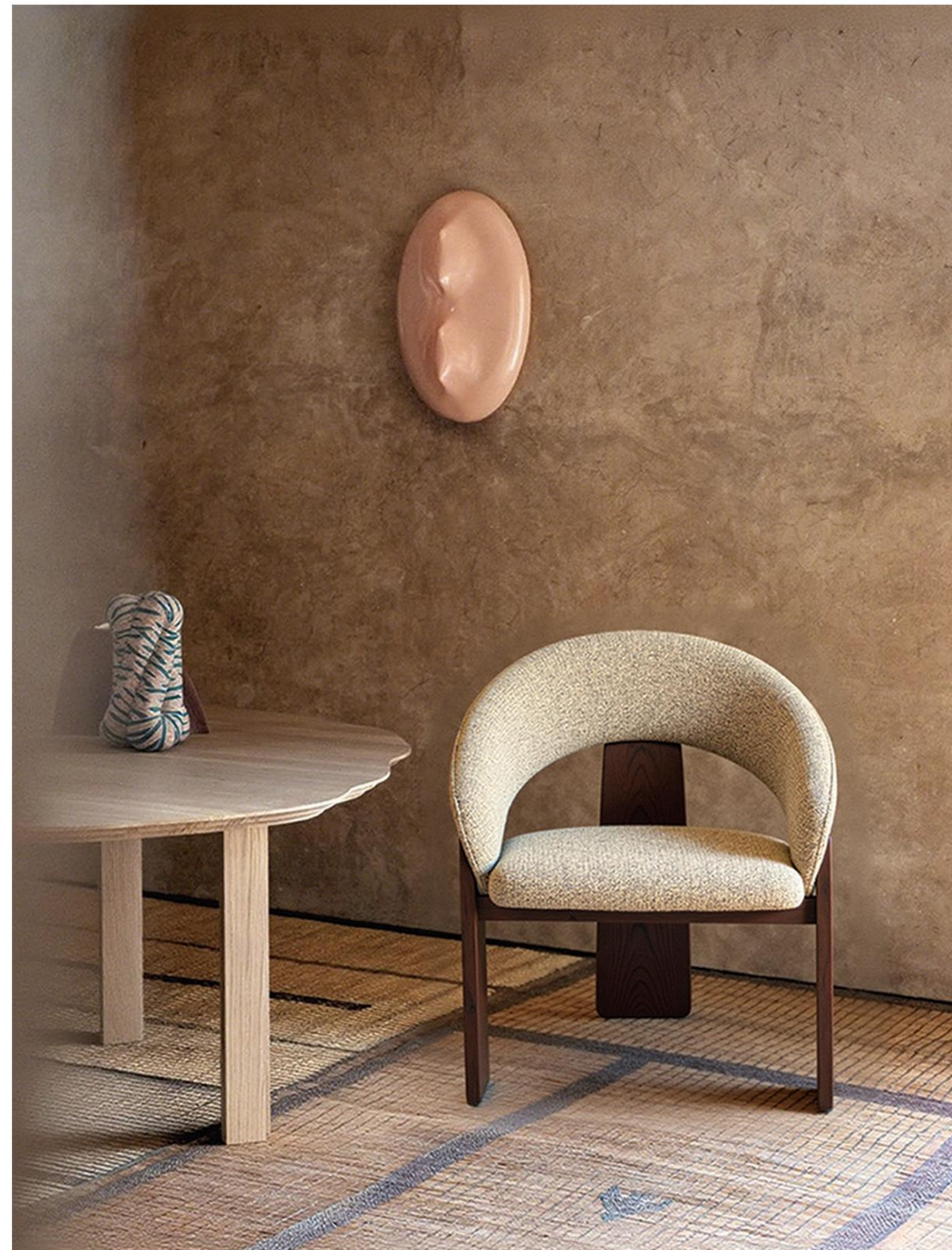


sofa: W76xD93xH83 SH44cm SD55  
stool: W65xD42xH42cm



## LYRA

The Lyra dining chair features a semicircular backrest connected to three straight wooden legs, harmoniously blending curved and linear forms. Inspired by the unfurling posture of banana leaves, sitting in it feels like being gently enveloped by nature.



W70xD65xH83cm  
SH46cm SD59cm





## TOTE

Inspired by the classic Burberry tote and paying a heartfelt tribute to the designs of French architectural master Jean-Marie Massaud, this piece features contrast-color piping that outlines its elegant silhouette. With clean, flowing lines, it combines striking aesthetics with exceptional seating comfort.



W82xD92xH87cm SH41cm SD63cm



## WINDSOR

The Windsor chair draws inspiration from musical notes. Its arched, embracing backrest seamlessly overlaps with the upwardly extending front legs, achieving a balance of lightness and stability. The elegant form resembles notes dancing in the air.



W68xD65xH82cm SH47cm SD55cm



## WINNI

What is the balance of tension and relaxation? The plump curves are full of tension, yet the stitching shows relaxed wrinkles. It mirrors the perfect balance we seek in both work and life.

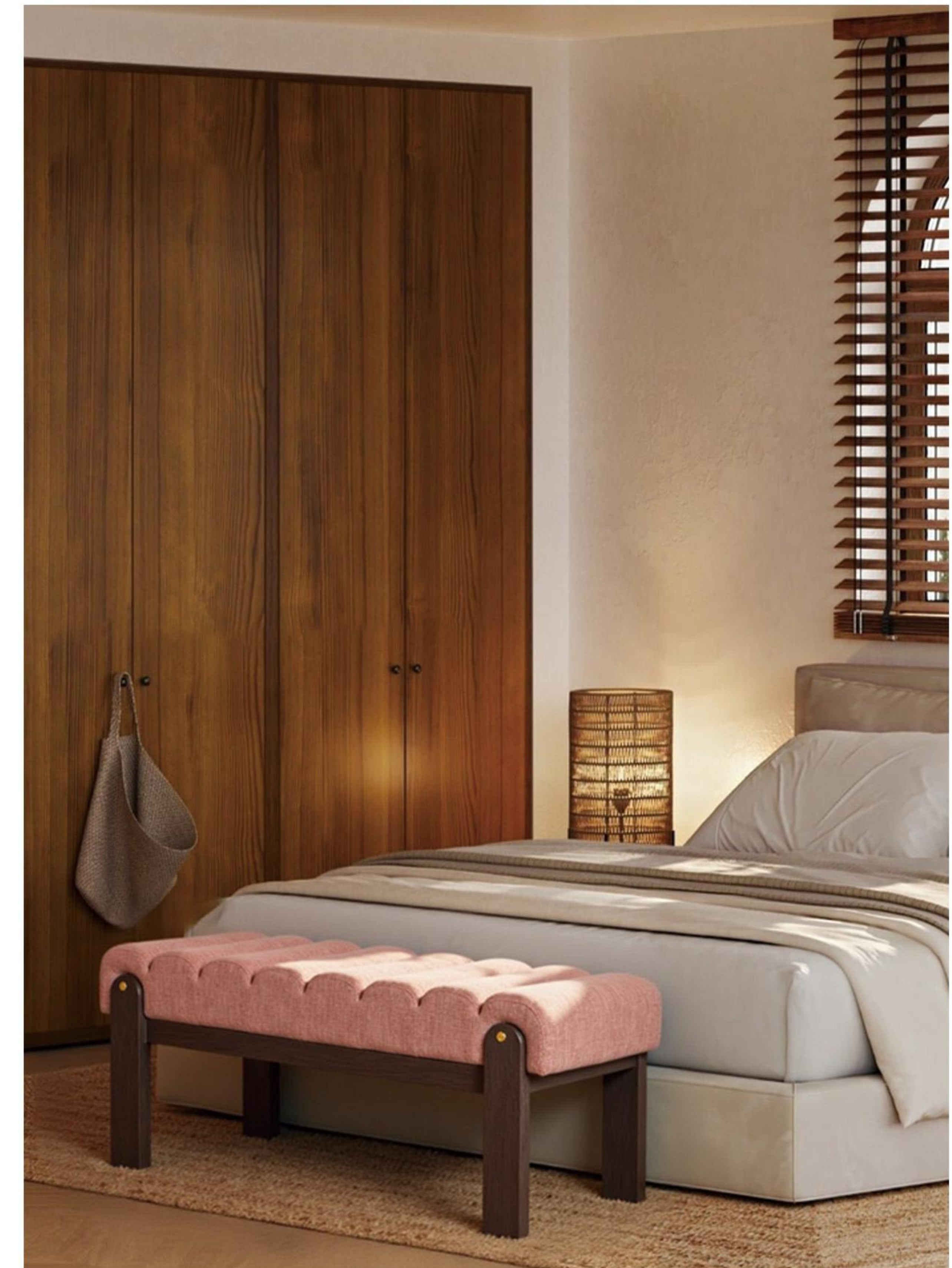


W101xD93xH76cm SH44cm SD66cm



## ELODIE

Inspired by the coastal vibe of a Barcelona beach house, the Elodie bench boasts a wavy upholstered form paired with high-quality wooden legs. Fluid and elegant, it elevates a room's ambiance like a piece of art.



W101xD42xH42cm



## OATMEAL COOKIE

It evokes the warmth of a winter oat latte. From a distance, it appears as compact and inviting as a coffee cup, while up close, its subtle texture and smooth softness become apparent. Sitting down, one savors the feeling of being gently embraced.



W82xD82xH75cm SH43cm SD52cm





## STAMI

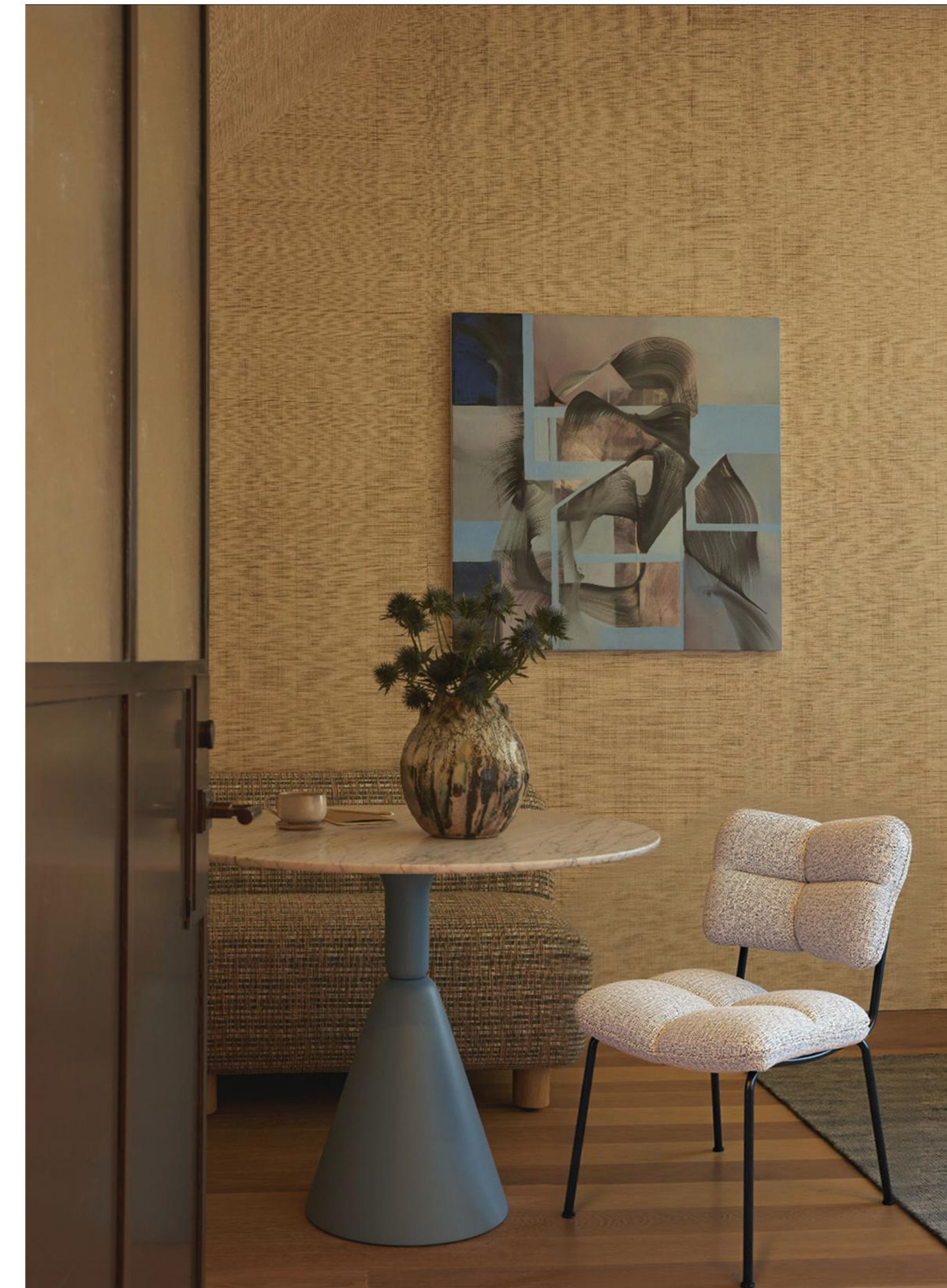
The Stami bench is a mid-century modern styled footstool. Its cushioned top features a retro striped texture, while the distinctive wooden legs are inspired by ancient Roman columns, injecting a classical architectural element into modern spaces.



W137xD49xH43cm



W50xD63xH80cm SH48cm SD48cm



## KATTLEYA

Inspired by the blossoming of flowers. The designer merges the unfurling petals from nature with the comfort of home, incorporating petal-like forms into the seat and backrest—making every sit feel like being surrounded by fresh flowers.



W48xD55xH105cm SH75cm SD50cm

## SYLVIA

Inspired by sweet cream puffs. The designer uses soft, full lines to extend that melt-in-your-mouth delight into home living—fluffy, light, and elegant. A sunny afternoon is perfect for a leisurely tea time.



## VERNA

Verna is a two-tone fabric dining chair. Its plush, soft cushion and backrest are removable, and the frame is supported by sturdy colored steel tubes. Shaped like a blooming flower's receptacle, it offers soft yet supportive comfort when you sit down.

W51.5xD65xH83cm SH45cm SD50cm



## JIM

The Jim chair is supported by colorful steel tubes and upholstered with vibrant striped fabric. It brings outdoor elements and a cozy atmosphere indoors, merging the garden with nature to create an alfresco experience inside.

W58xD63xH78cm  
SH45cm SD50cm





HM5-25043



HM5-25044



HM5-25045



HM5-25053



HM5-25054



HM5-25047



HM5-25050



HM5-25044



HM5-25049



HM5-25052



HM5-25051



HM5-25055



HM5-25048



HM5-25058



HM5-25056



HM5-25057

iH o o o m e

---

*Live the home you imagine*

IHOME@IHOME-DECO.COM