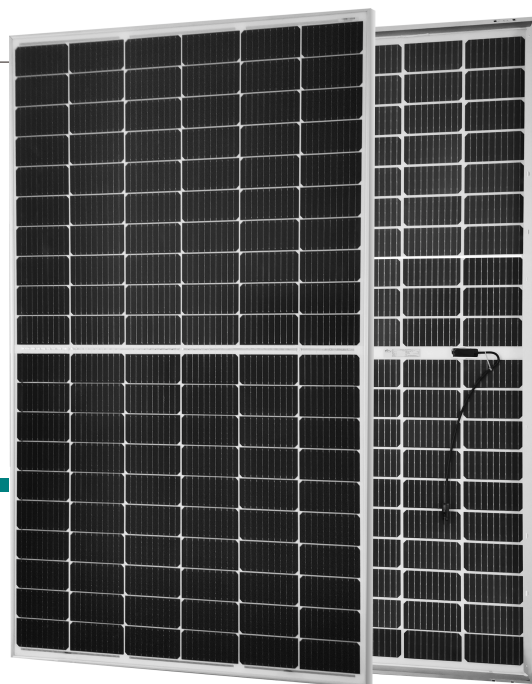


Maysun Solar

166mm 120Cells

BIFACIAL TECHNOLOGY 120 LAYOUT MODULE

MS(360-380)MB- 60H Series



120 LAYOUT

MONOCRYSTALLINE MODULE

360- 380W

POWER OUTPUT RANGE

20.7%

MAXIMUM EFFICIENCY

0~+5W

POSITIVE POWER TOLERANCE

Maysun Solar brand was established in 2008, our marketing center is located in the beautiful Chinese city of Hangzhou. We are a professional solar panels manufacturer and wholesaler. Our business covers the production and manufacture of various types of mono solar panels and poly solar panels. We have two solar plates production bases in China and UAE, with an annual production capacity of 1G watts. Our solar panel products have been exported to more than 80 countries and regions around the world. We have overseas sales offices and warehouses in Germany, Italy, Poland, Hungary, Saudi Arabia, Indonesia, UAE, etc. We have strictly quality management system of solar PV module, we are capable of absorbing and applying advanced technologies and new processes in the photovoltaic module industry in the fastest time, bringing high-performance special solar PV modules to the market, and serve our customers.

**Comprehensive Products
and System Certificates**

IEC61215/IEC61730/IEC61701/IEC62716
ISO 9001: Quality Management System

Management System



PRODUCTS

MS(360-380)MB- 60H

POWER RANGE

360-380W



High power

- Up to 380W front power and 20.7% module efficiency with half-cut and MBB (Multi Busbar) technology bringing more BOS savings
- Lower resistance of half-cut and good reflection effect of MBB ensure high power



High reliability

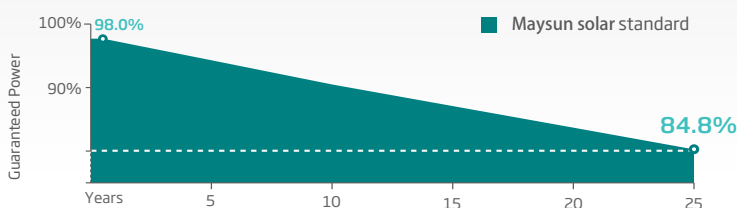
- Ensured PID resistance through cell process and module material control
- Resistant to salt, acid and ammonia
- Mechanical performance: Up to 5400 Pa positive load and 2400 Pa negative load



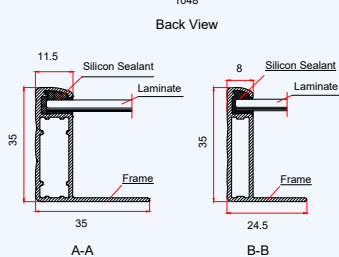
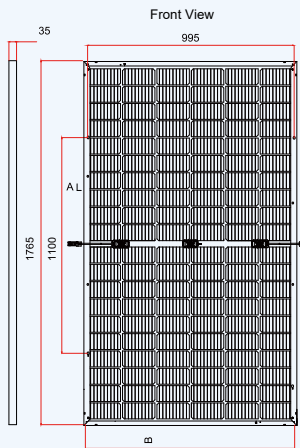
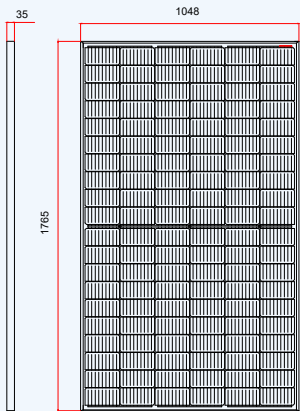
High energy generation

- Excellent IAM and low light performance validated by 3rd party with cell process and module material optimization
- Better anti-shading performance and lower operating temperature

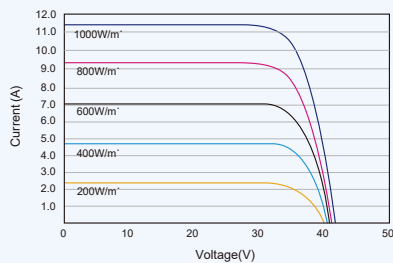
PERFORMANCE WARRANTY



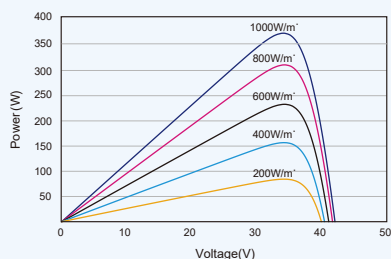
DIMENSIONS OF PV MODULE(mm)



I-V CURVES OF PV MODULE(370W)



P-V CURVES OF PV MODULE(370W)



ELECTRICAL DATA (STC)

Peak Power Watts- P_{MAX} (Wp)*	360	365	370	375	380
Power Tolerance- P_{MAX} (W)	0 ~ +5				
Maximum Power Voltage- V_{MPP} (V)	33.6	33.9	34.2	34.4	34.7
Maximum Power Current- I_{MPP} (A)	10.70	10.76	10.82	10.89	10.96
Open Circuit Voltage- V_{OC} (V)	40.7	41.0	41.3	41.6	41.9
Short Circuit Current- I_{SC} (A)	11.24	11.30	11.37	11.45	11.52
Module Efficiency η_m (%)	19.6	19.9	20.2	20.5	20.7

STC: Irradiance 1000W/m², Cell Temperature 25°C, Air Mass AM1.5.
*Measuring tolerance: ±3%.

ELECTRICAL DATA (NOCT)

Maximum Power- P_{MAX} (Wp)	271	275	279	283	287
Maximum Power Voltage- V_{MPP} (V)	31.5	31.8	32.0	32.2	32.5
Maximum Power Current- I_{MPP} (A)	8.60	8.65	8.71	8.77	8.83
Open Circuit Voltage- V_{OC} (V)	38.3	38.6	38.9	39.2	39.4
Short Circuit Current- I_{SC} (A)	9.06	9.10	9.16	9.23	9.28

NOCT: Irradiance at 800W/m², Ambient Temperature 20°C, Wind Speed 1m/s.

MECHANICAL DATA

Solar Cells	Monocrystalline
Cell Orientation	120 cells (6×20)
Module Dimensions	1765×1048 × 30 mm (69.49×41.25 × 1.18 inches)
Weight	20.0 kg (44.1 lb)
Glass	3.2mm (0.13 inches), High Transmission, AR Coated Heat Strengthened Glass
Encapsulant Material	EVA/POE
Backsheet	Transparent
Frame	30 mm (1.18 inches) Anodized Aluminium Alloy
J-Box	IP 68 rated
Cables	Photovoltaic Technology Cable 4.0mm ² (0.006 inches ²), Portrait: N 300mm/P 300mm(11.02/11.02inches) Landscape: N 1200 mm /P 1200 mm (47.24/47.24 inches)
Connector	MC4

*Please refer to regional datasheet for specific connector.

TEMPERATURE RATINGS

NOCT(Nominal Operating Cell Temperature)	43°C (±2°C)
Temperature Coe ^o cient of P_{MAX}	- 0.34%/°C
Temperature Coe ^o cient of V_{OC}	- 0.25%/°C
Temperature Coe ^o cient of I_{SC}	0.04%/°C

(Do not connect Fuse in Combiner Box with two or more strings in parallel connection)

WARRANTY

12 year Product Workmanship Warranty
25 year Power Warranty
2% first year degradation
0.55% Annual Power Attenuation

(Please refer to product warranty for details)

MAXIMUM RATINGS

Operational Temperature	-40~+85 °C
Maximum System Voltage	1500V DC (IEC)
Max Series Fuse Rating	20A

PACKAGING CONFIGURATION

Modules per box: 37 pieces
Modules per 40' container: 1047 pieces



CAUTION: READ SAFETY AND INSTALLATION INSTRUCTIONS BEFORE USING THE PRODUCT.

© 2021 Maysun Solar FZCO. All rights reserved. Specifications included in this datasheet are subject to change without notice. Version number: MS20210720

www.maysunsolar.com