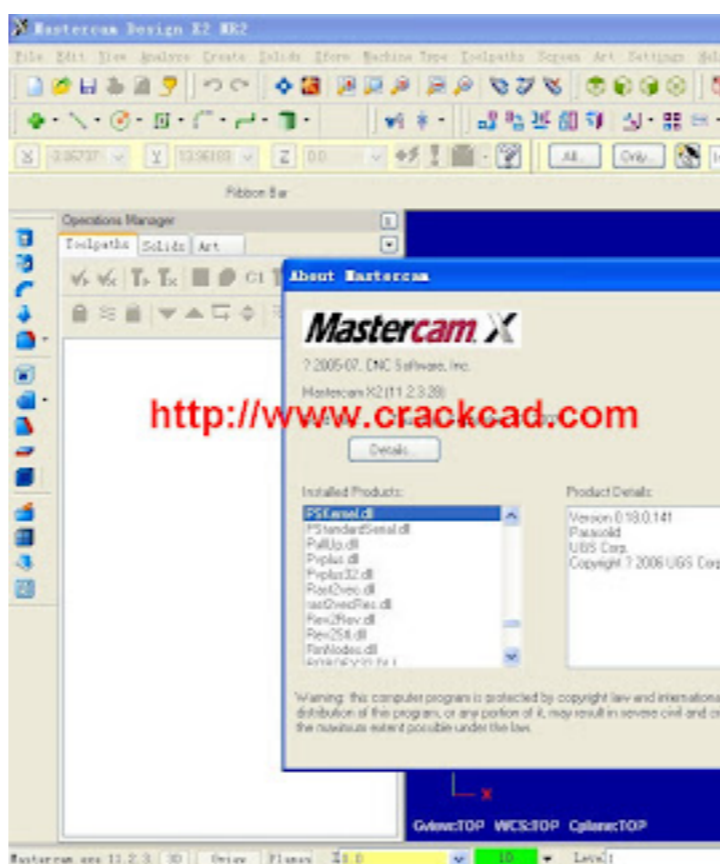


Deform 3d V11 Torrent



DOWNLOAD: <https://tinurli.com/2ikeuo>

Download

EU-DEM - SRTM30 - ETOPO1 - CTMGW European Union-DEM (EU-DEM) ----- The EU-DEM is a 3D raster dataset with elevations captured at 1 arc second postings (2.78E-4 degrees) or about every 30 metre. All three datasets are made. SRTM30 (1 arc-second) ----- The SRTM30 (Spatial Research Consortium for Thematic Mapping) is a 30m elevation raster data layer for the whole earth (2.5 earth radiuses). It covers all land areas in the world at 30 meter spatial resolution. SRTM30 data was generated from two sources: 1. SRTM3 data; and 2. Field surveys. ETOPO1 (1 arc-second) ETOPO1 (European Centre for Medium-Range Weather Forecasts, 1 arc second) is a gridded global 1 arc-second raster dataset, containing population data on approximately equal cell spacing grid. ETOPO1 data was generated from: 1. ETOPO1 data; and CTMGW (1 arc-second) ----- CTMGW (Country Terrain Modelling Group Worldwide) is a global digital elevation model generated by the Country Terrain Modeling Group, and is the most sophisticated elevation model available for the world. CTMGW data was generated from: Results and discussions {#sec:results} ===== In this section, we present the results from the case studies. We first present the key findings of each case study. Secondly, we present results from the comparison studies. Case study 1: The GAVA case study {#sec:case1} ===== Gava watershed is one of the projects which carried out with the cooperation of various local stakeholders. Within the Gava region of Nepal, is considered one of the most vulnerable regions and several cases of natural hazards such as flooding and landslides are common. The valley is prone to landslides because of its rocky terrain. A total of 125 520f0db1ae7

[Composer Pro 2.2.4](#)

Apostiladescomplicandoamusicapdf

[download killer e2200 pci-e gigabit ethernet controller \(ndis 6.20\)](#)