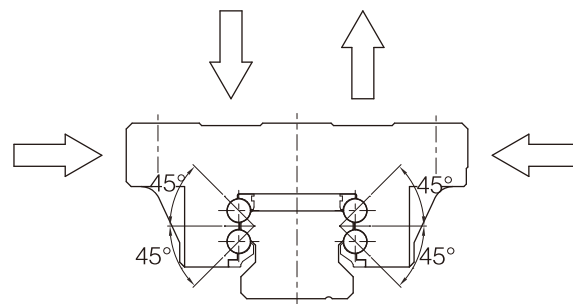
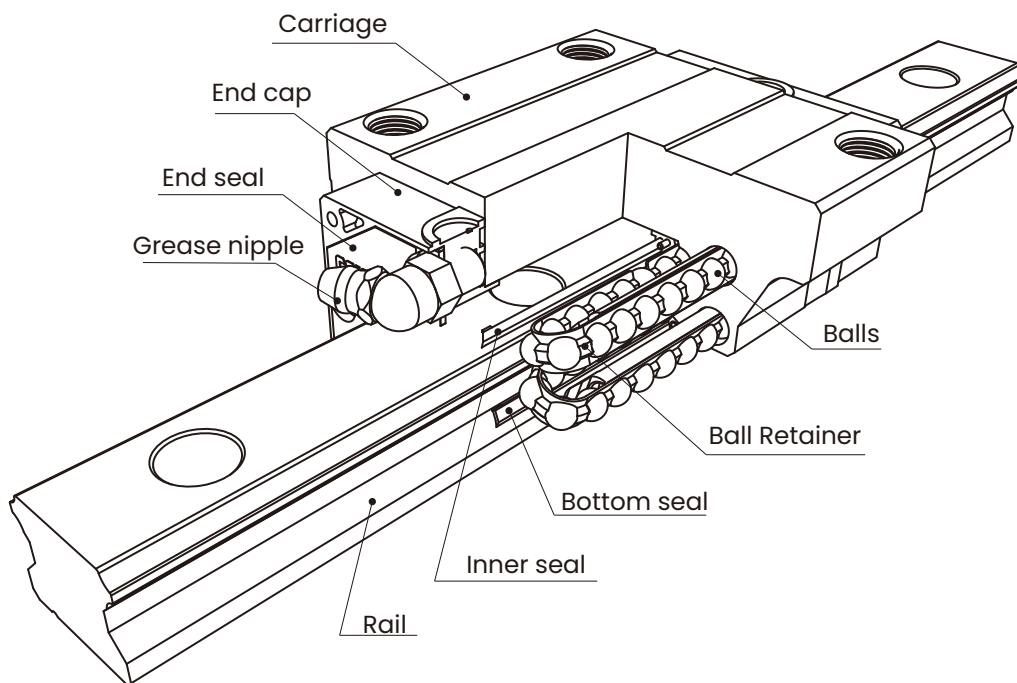


# LMGQ series



Note : For reference only.

## Characteristics

The four trains of balls are designed with a contact angle of 45° which enables it not only to bear load equally in radial, reversed radial and lateral directions but also can achieve high rigidity and high loading capacity. Therefore, it is suitable for all directional installation. Furthermore the unique self alignment function of LMG series can compensate the certain error while assembling, and which results in high precision and smooth motion.

- High rigidity
- Four-way equal load
- Self alignment capability
- Complete dust sealing system
- High positioning accuracy
- Low dust emission
- Smooth movement
- Low noise and high speed application
- Interchangeability
- Carriage common rail design
- International standard

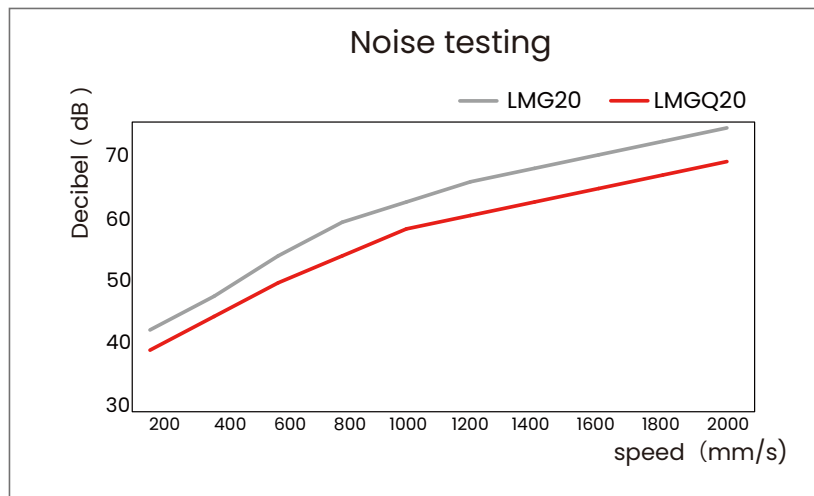
## Applications

- Machine Tool (CNC、Lathe ...)
- Industrial Robot
- Semiconductor Manufacturing Equipment  
Other (Injection Molding Machine ...)

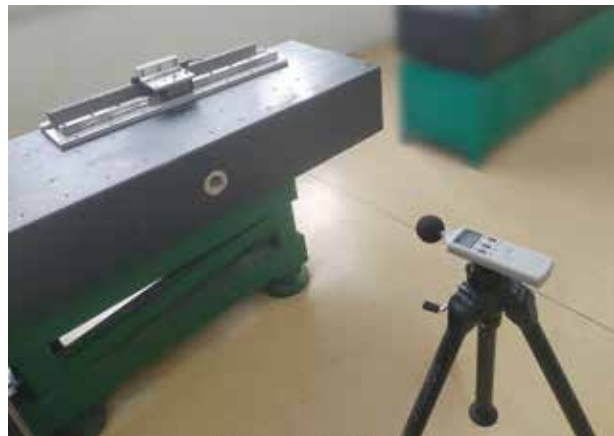
## Characteristics

The LMGQ series uses a Ball Linker to eliminate the sharp sound (high audio sound) caused by the collision between the balls. Through experimental measurements, it has been found that under different speed conditions, the overall sound of the LMGQ series is effectively reduced by 5-7 decibels compared to the LMG series.

Model No.	Test conditions
Size	LMG/GQ20H1SSP0+R1200-30/30N
speed	200mm/s-2000mm/s
stroke	1000mm



• Noise testing machine



## Specifications

### ( 1 ) Non-Interchangeable type

	LMGQ	20	C	2	SS	PI	+R	1000	-20	/20	P	II
Series : LMGQ												
Size : 15 , 20 , 25												
Carriage type ( 1 ) Heavy load												
C : Flange type, mounting either from top or bottom												
H : Square high type												
T : Square compact type ( 2 ) Ultra heavy load												
LC : Flange type, mounting either from top or bottom												
LH : Square high type ( 3 ) Medium load												
ST : Square compact type												
Number of carriages per rail : 1 , 2 , 3 ...												
Dust protection option : No symbol , UU , SS , VV ,												
Preload : P0 ( Light preload ) , P1 ( Medium preload ) , P2 ( Heavy preload )												
Code of special carriage : A , B ... ( Standard rail is no symbol )												
Rail type : R , U* ( Counter-bore type ) , T ( Tapped hole type )												
Rail length ( mm )												
Rail hole pitch from start side ( E1, Refer to Figure A-37 )												
Rail hole pitch to the end side ( E2, Refer to Figure A-37 )												
Accuracy grade : N , H , P , SP , UP												
Code of special rail : A , B ... ( Standard rail is no symbol )												
Number of rails per axis : No symbol , II , III , IV ...												

\*U type rail is only applicable for LMGQ15, detail information please see the specification table for the corresponding model number.

## Specifications

### ( 2 ) Interchangeable type

- Code of Carriage

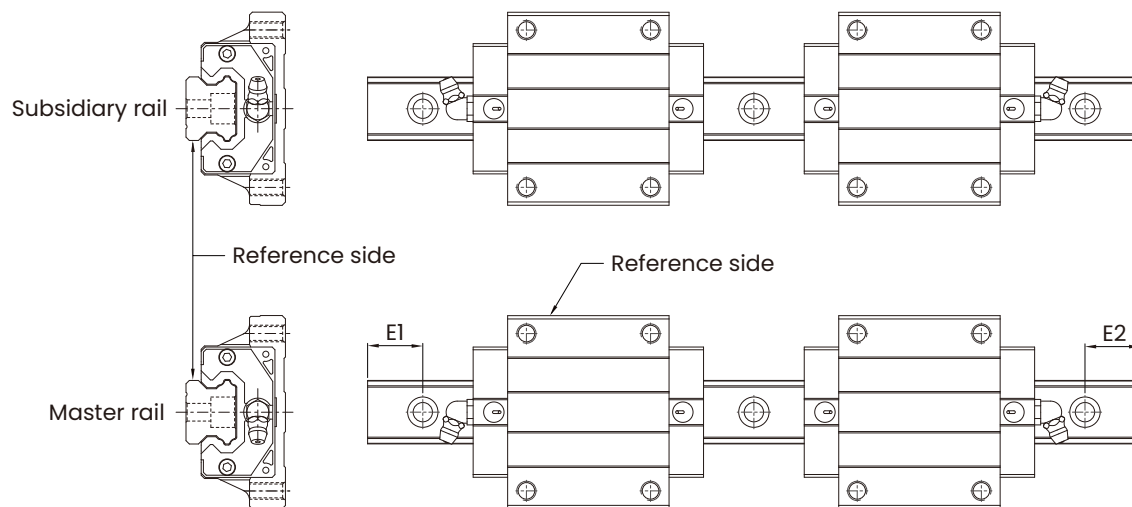
	LMGQ	20	C	SS	P0	N
Series : LMGQ						
Size : 15 , 20 , 25						
Carriage type						
( 1 ) Heavy load						
C : Flange type, mounting either from top or bottom						
H : Square high type						
T : Square compact type						
( 2 ) Ultra heavy load						
LC : Flange type, mounting either from top or bottom						
LH : Square high type						
( 3 ) Medium load						
ST : Square compact type						
Dust protection option : No symbol , UU , SS , VV						
Preload : P0 ( Light preload )						
Accuracy grade : N , H						
Code of special carriage : A , B ... ( Standard carriage is no symbol )						

## Specifications

### • Code of Rail

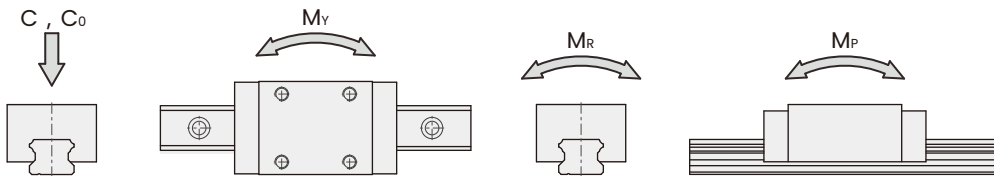
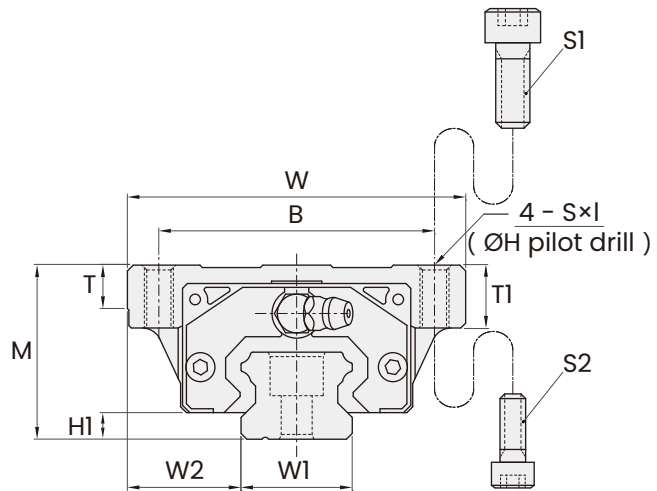
	LMG	20	R	1000	-20	/20	N
Series : LMG							
Size : 15 , 20 , 25							
Rail type : R , U* ( Counter-bore type ) , T ( Tapped hole type )							
Rail length ( mm )							
Rail hole pitch from start side ( E1, see Figure below )							
Rail hole pitch to the end side ( E2, see Figure below )							
Accuracy grade : N , H							
Code of special rail : A , B ... ( Standard rail is no symbol )							

\*U type rail is only applicable for LMG15, detail information please see the specification table for the corresponding model number.



## Dimensions of LMGQ...C / LC

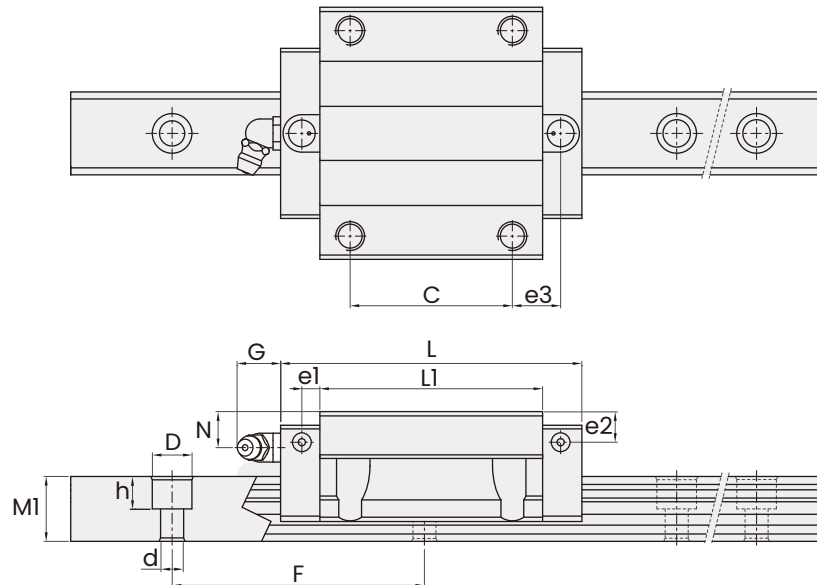
Model No.	Bolt Size		Pilot drill
	S1	S2	H
LMGQ15	M5	-	-
LMGQ20	M6	M5	5.3
LMGQ25	M8	M6	6.9



Unit (mm)

Model No.	External dimension			Carriage dimension												
	Height	Width	Length	B	C	Mounting hole SxI	L1	T	T1	H1	N	e1	e2	e3	G	Grease nipple
	M	W	L													
LMGQ15 C	24	47	61.2	38	30	M5×8	43.8	5.5	8	4	5	3.3	4	10.9	5	M4×0.7
LMGQ20 C	30	63	76.1	53	40	M6×10	53.7	7	10.2	4.6	8.5	4.5	7	13.4	12	M6×0.75
LMGQ20 LC	30	63	91.1	53	40	M6×10	68.5	7	10.2	4.6	8.5	4.5	7	18.8	12	M6×0.75
LMGQ25 C	36	70	84.7	57	45	M8×13	62.7	9	13	5.5	10	5	9.5	13.9	12	M6×0.75
LMGQ25 LC	36	70	104.2	57	45	M8×13	83	9	13	5.5	10	5	9.5	23.7	12	M6×0.75

## Dimensions of LMGQ...C / LC

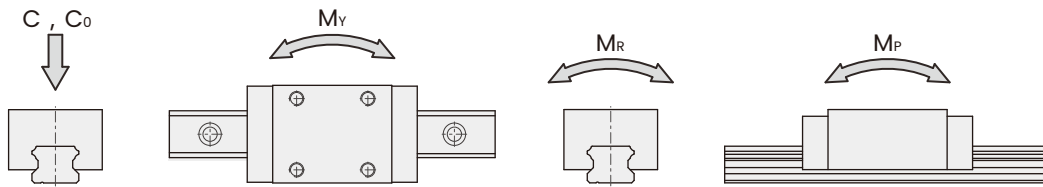
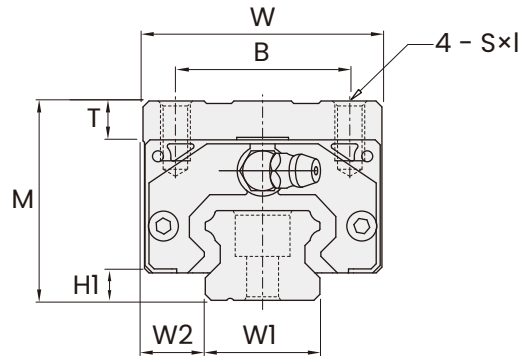


Unit(mm)

Model No.	Width		Rail dimension			Basic load rating		Static moment rating				Weight		
	W1	W2	Height M1	Pitch F	Mounting bolt hole D×h×d	Dynamic C KN	Static C <sub>0</sub> KN	M <sub>P</sub> (KN·m)		M <sub>V</sub> (KN·m)		M <sub>R</sub> KN·m	Carriage Kg	Rail Kg/m
								Single Carriage	Double Carriages	Single Carriage	Double Carriages			
LMGQ15 C	15	16	13	60	7.5×5.3×4.5*	11.1	16.2	0.11	0.61	0.11	0.61	0.13	0.18	1.29
LMGQ20 C	20	21.5	15	60	9.5×8.5×6	18.9	27.4	0.23	1.29	0.23	1.29	0.28	0.40	1.92
LMGQ20 LC	20	21.5	15	60	9.5×8.5×6	22.4	33.7	0.35	1.84	0.35	1.84	0.35	0.51	1.92
LMGQ25 C	23	23.5	18	60	11×9×7	26.4	36.4	0.35	1.94	0.35	1.94	0.43	0.62	2.67
LMGQ25 LC	23	23.5	18	60	11×9×7	32.3	48.6	0.60	3.09	0.60	3.09	0.57	0.81	2.67

- \*1.Rail mounting holes for M3 bolt (6×4.5×3.5) and M4 bolt (7.5×5.3×4.5) are available for LMG15 rail.  
The codes of rail type are LMG15R for M4 bolt, and LMG15U for M3 bolt.  
2.Rail mounting holes for M6 bolt (11×9×7) and M8 bolt (14×12×9) are available for the LMG30 rail.  
The codes of rail type are LMG30R for M8 bolt, and LMG30U for M6 bolt.  
3.The LMGQ15C type slider does not provide a bottom-locking feature.

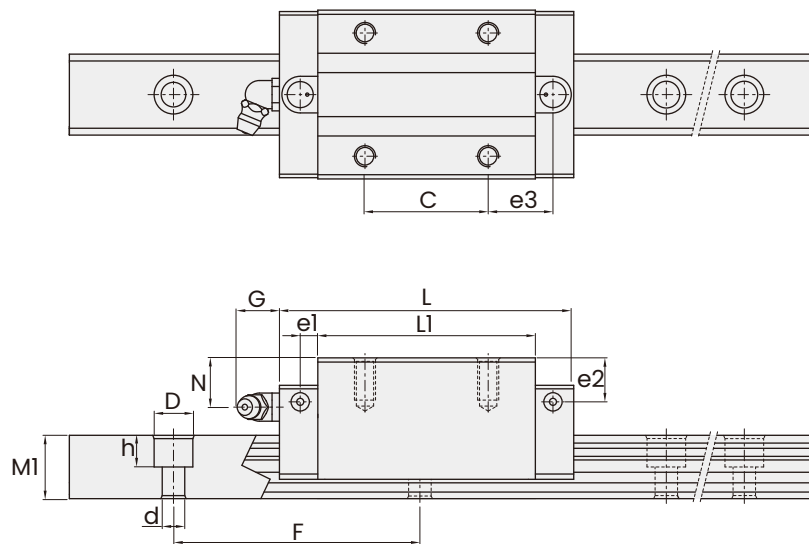
Dimensions of LMGQ...H / LH



Unit ( mm )

Model No.	External dimension			Carriage dimension											
	Height	Width	Length	B	C	Mounting hole S×I	L1	T	H1	N	e1	e2	e3	G	Grease nipple
	M	W	L												
LMGQ15 H	28	34	61.2	26	26	M4×7	43.8	6	4	9	3.3	8	12.9	5	M4×0.7
LMGQ20 H	30	44	76.1	32	36	M5×8	53.7	6	4.6	8.5	4.5	7	13.4	12	M6×0.75
LMGQ20 LH	30	44	91.1	32	50	M5×8	68.5	6	4.6	8.5	4.5	7	13.8	12	M6×0.75
LMGQ25 H	40	48	84.7	35	35	M6×12	62.7	8	5.5	14	5	13.5	18.9	12	M6×0.75
LMGQ25 LH	40	48	104.2	35	50	M6×12	83	8	5.5	14	5	13.5	21.5	12	M6×0.75

## Dimensions of LMGQ...H/ LH

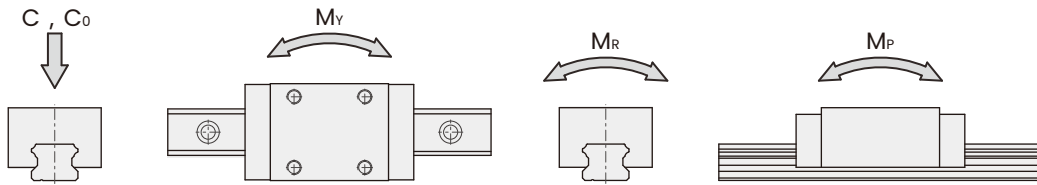
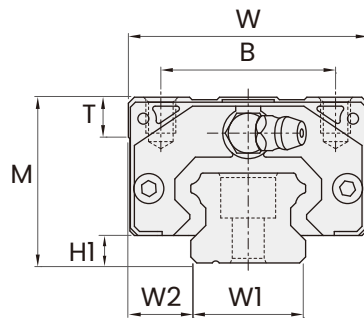


Unit(mm)

Model No.	Width		Rail dimension			Basic load rating		Static moment rating				Weight		
	W1	W2	Height	Pitch	Mounting bolt hole	Dynamic	Static	$M_P$ (KN·m)		$M_V$ (KN·m)		$M_R$ KN·m	Carriage Kg	Rail Kg/m
			M1	F	D×h×d	C KN	$C_0$ KN	Single Carriage	Double Carriages	Single Carriage	Double Carriages			
LMGQ15 H	15	9.5	13	60	7.5×5.3×4.5*	11.1	16.2	0.11	0.61	0.11	0.61	0.13	0.18	1.29
LMGQ20 H	20	12	15	60	9.5×8.5×6	18.9	27.4	0.23	1.29	0.23	1.29	0.28	0.31	1.92
LMGQ20 LH	20	12	15	60	9.5×8.5×6	22.4	33.7	0.35	1.84	0.35	1.84	0.35	0.39	1.92
LMGQ25 H	23	12.5	18	80	11×9×7	26.4	36.4	0.35	1.94	0.35	1.94	0.43	0.55	2.67
LMGQ25 LH	23	12.5	18	80	11×9×7	32.3	48.6	0.60	3.09	0.60	3.09	0.57	0.72	2.67

\*1.Rail mounting hloes for M3 bolt (6×4.5×3.5) and M4 bolt (7.5×5.3×4.5) are available for LMG15 rail.  
The codes of rail type are LMG15R for M4 bolt, and LMG15U for M3 bolt.

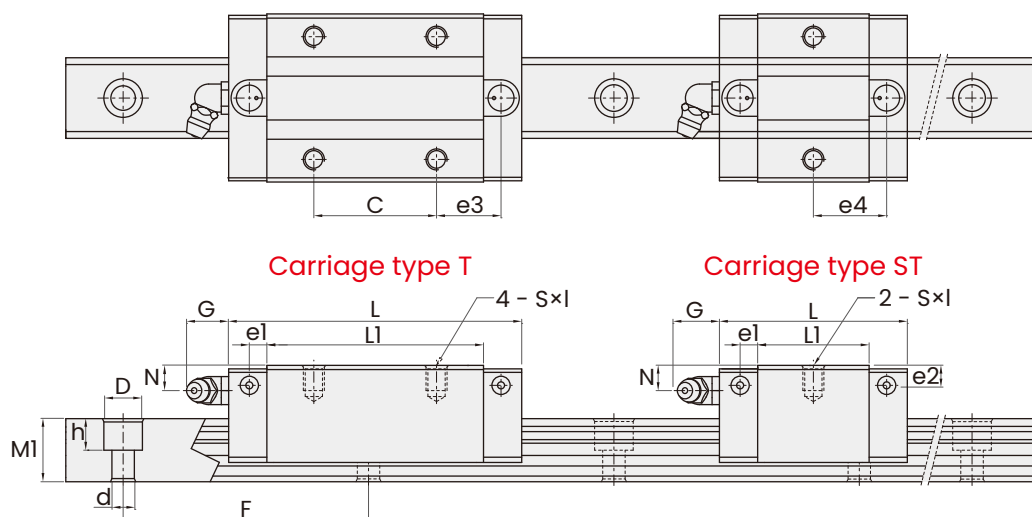
## Dimensions of LMGQ...ST / T



Unit ( mm )

Model No.	External dimension			Carriage dimension												
	Height	Width	Length	B	C	Mounting hole S×I	LI	T	H1	N	e1	e2	e3	e4	G	Grease nipple
	M	W	L													
LMGQ15 T	24	34	61.2	26	26	M4×5	43.8	6	4	5	3.3	4	12.9	-	5	M4×0.7
LMGQ20 ST	28	42	50.9	32	-	M5×6	28.3	6	4.6	6.5	4.5	5	-	18.7	12	M6×0.75
LMGQ20 T	28	42	76.1	32	32	M5×6	53.7	6	4.6	6.5	4.5	5	15.4	-	12	M6×0.75
LMGQ25 T	33	48	84.7	35	35	M6×7	62.7	6	5.5	7	5	6.5	18.9	-	12	M6×0.75

## Dimensions of LMGQ...ST / T



Unit(mm)

Model No.	Width		Rail dimension			Basic load rating		Static moment rating				Weight		
	W1	W2	Height M1	Pitch F	Mounting bolt hole D×h×d	Dynamic C KN	Static C <sub>0</sub> KN	M <sub>P</sub> (KN·m)		M <sub>V</sub> (KN·m)		M <sub>R</sub> KN·m	Carriage Kg	Rail Kg/m
								Single Carriage	Double Carriages	Single Carriage	Double Carriages			
LMGQ15 T	15	9.5	13	60	7.5×5.3×4.5*	11.1	16.2	0.11	0.61	0.11	0.61	0.13	0.14	1.29
LMGQ20 ST	20	11	15	60	9.5×8.5×6	7.4	9.4	0.04	0.33	0.04	0.33	0.07	0.13	1.92
LMGQ20 T	20	11	15	60	9.5×8.5×6	18.9	27.4	0.23	1.29	0.23	1.29	0.28	0.26	1.92
LMGQ25 T	23	12.5	18	80	11×9×7	26.4	36.4	0.35	1.94	0.35	1.94	0.43	0.41	2.67

\*1.Rail mounting holes for M3 bolt (6×4.5×3.5) and M4 bolt (7.5×5.3×4.5) are available for LMG15 rail.  
The codes of rail type are LMG15R for M4 bolt, and LMG15U for M3 bolt.

## Lubrication

A well lubrication is important for maintaining the function of the linear guideway. If the lubrication is not sufficient, the frictional resistance at rolling area will increase and the service life will be shortened as a result of wear of rolling parts. Two primary lubricants are both grease and oil used for the linear motion system, and the lubrication methods are categorized into manual and forced oiling. The selection of lubricant and its method should be based on the consideration of operating speed and environment requirement.

### Grease lubrication

The grease feeding interval will be varied with different operating conditions and environments. Under normal operating condition, the grease should be replenished every 100km of travel. The standard pre-filled grease is lithium-based grease No.2. Moving the carriage back and forth with minimum stroke length of three carriages after the carriages been greased. To assure the grease is evenly distributed inside of carriage, the mentioned process should be repeated twice at least.

### Oil lubrication

The recommended viscosity of oil is 30-150 cst, and the recommended feeding rate per hour. The installation other than horizontal may caused the oil unable to reach raceway area, so please specify the installed direction of your linear guideway applied.

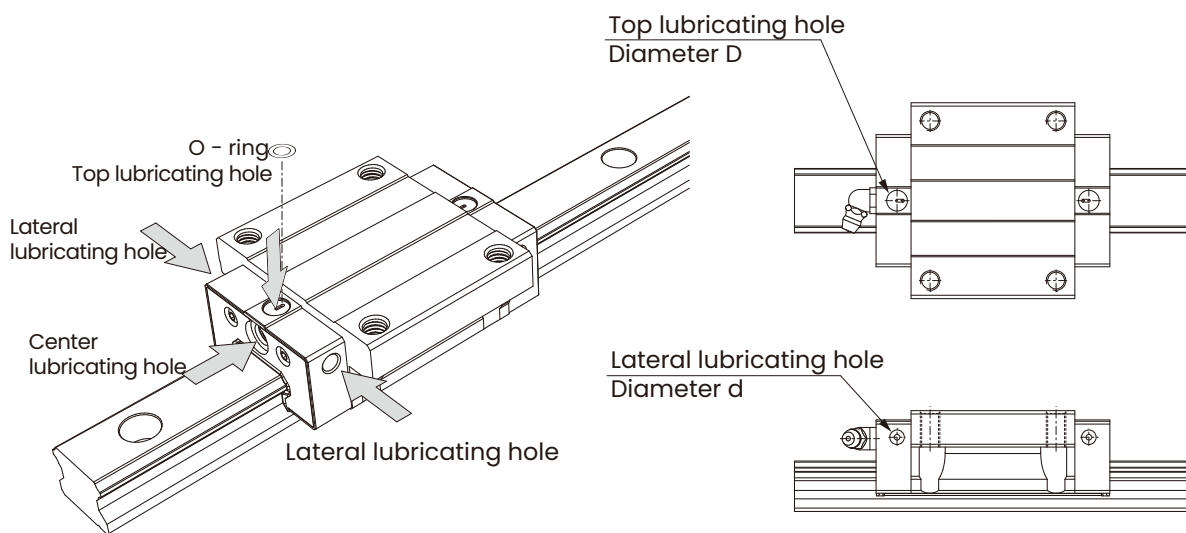
### Note :

When the operating stroke length less than the sum of length of two carriages, the lubrication fitting should be applied on both ends of carriage for adequacy. Moreover, if the stroke length less than a half of the length of a carriage, the carriage should be moved back and forth up to the length of two carriages while lubricating.

## Lubrication

### Lubrication position

The standard lubricating position of carriage is at the center of both ends, as shown below. As for lateral and top application, please specify when ordering.



Unit ( mm )

Model No.	Center Lubricating	Lateral Lubricating			Top Lubricating		
	Grease Nipple	Diameter D	Grease Nipple	Drilling size	Diameter D	O - ring	Drilling size
LMG/GQ 15	M4×0.7P	3.3	M4×0.7P	1.5	5.8	P2	1
LMG/GQ 20	M6×0.75P	5.2	M6×0.75P	2	7.4	P4	
LMG/GQ 25					10.2		
LMG 30							
LMG 35	PT1/8	5.2	M6×0.75P	2	10.2	P7	1.5
LMG 45							
LMG 55							

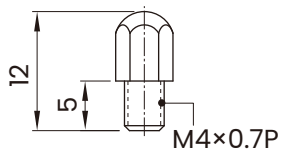
\*In cases where the travel distance is less than the total length of two sliders, grease fittings or oil pipe connectors must be installed at both ends of the sliders, and regular lubrication is required. If the travel distance is less than half the total length of a slider, in addition to the aforementioned method, the slider must be moved back and forth over a lubrication distance of at least two slider lengths during lubrication.

## Lubrication

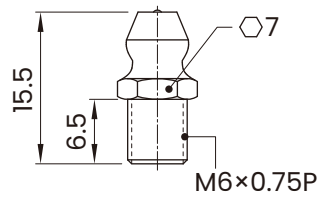
### Grease nipples and oil piping joint

#### (1) Grease nipples

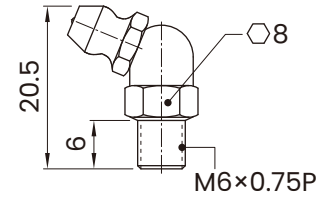
GS - M4



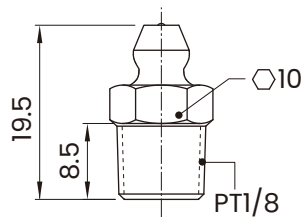
GS - M6



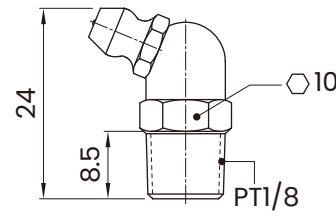
GC - M6



GS - 7



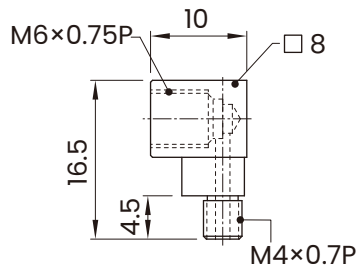
GC - 7



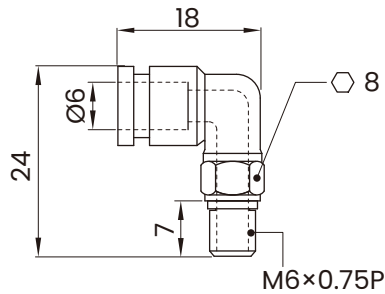
#### (2) Oil piping joint

##### ● OC Type

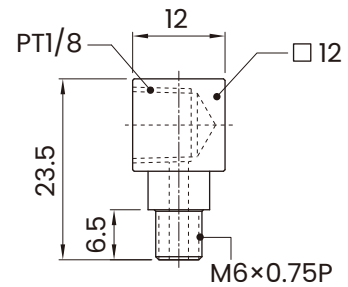
OC - 46



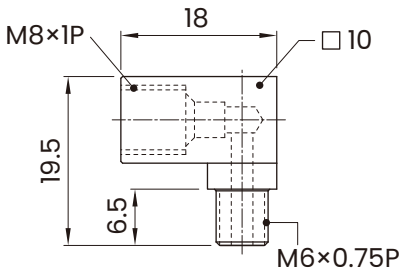
OC - 66



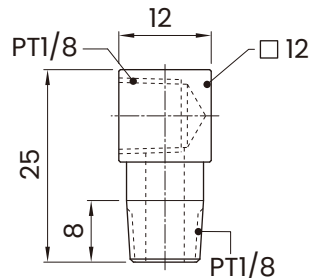
OC - 67



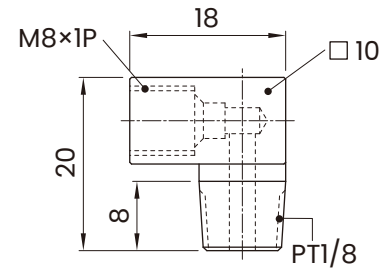
OC - 68



OC - 77



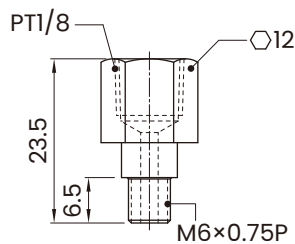
OC - 78



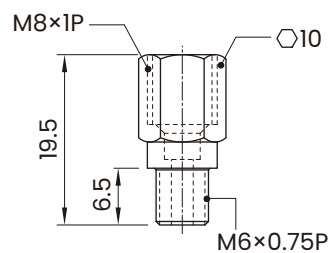
## Specifications

### • OS Type

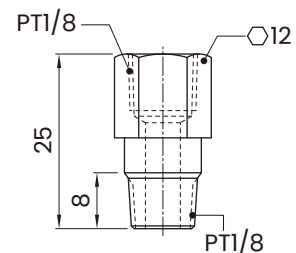
OS - 67



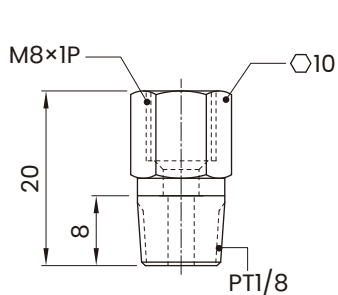
OS - 68



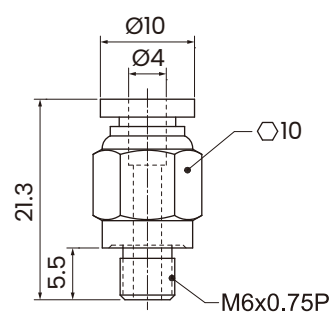
OS - 77



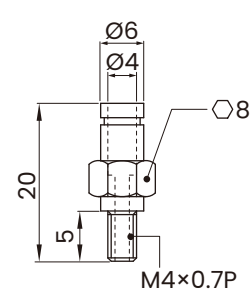
OS - 78



OS - 64 ( Fast joint )



OS - 44 ( Fast joint )



Model No.	Grease Nipples		Oil Piping Joint
	Standard	Option	Option
LMG/GQ 15	GS - M4	-	OC - 46, OS - 44
LMG/GQ 20	GC - M6	GS - M6	OC - 66, OC - 67, OC - 68, OS - 67, OS - 68, OS - 64
LMG/GQ 25			
LMG 30			
LMG 35	GC - 7	GS - 7	OC - 77, OC - 78, OS - 77, OS - 78
LMG 45			
LMG 55			



## Characteristics

- Can be used with grease
- Wide use of ambient temperature range
- Extend the maintenance cycle and reduce the maintenance cost
- Low consumption and environmentally friendly
- Oil supplement design, low cost
- Improve the service life of guide rail

## Applications

- Automation equipment
- Electronic machinery
- Industrial machinery
- Other

## Specifications

(1) Non-Interchangeable type

LMG/GQ20C2SSP1 SR +R1000-20/20PII

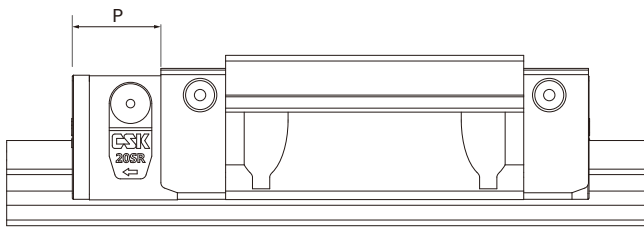
Self-Lubricating Module: SR

(2) Interchangeable type

LMG/GQ20CSP0SRN

Self-Lubricating Module: SR

## Dimension parameters



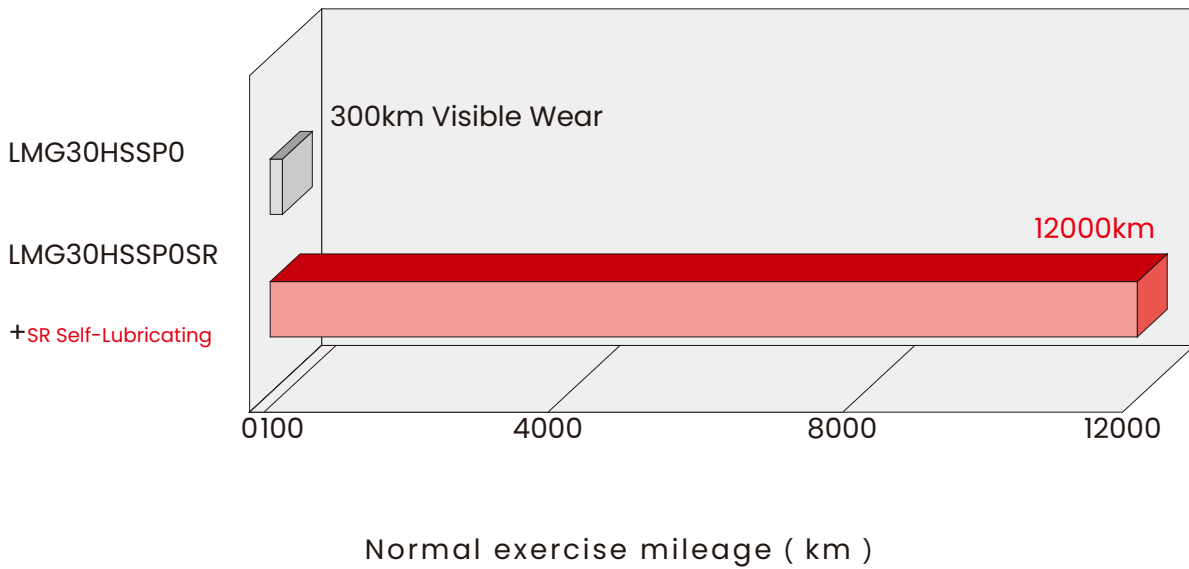
Extended size of Carriage

Model No.	P	Oil replenishment volume(ml)
LMG 15	12.6	1.3
LMG 20	15.6	2.8
LMG 25	15.6	4
LMG 30	15.6	5.9
LMGQ 15	15.6	1.3
LMGQ 20	18.6	2.8
LMGQ 25	18.6	4

## Test conditions

Model No.	Test conditions
Size	LMG30H2SSP0SR+R1200-40/40NII
Speed	60m/min
stroke	1000mm
Payload	300kgf

Test conditions



Model No.	Need to replenish lubricating oil ( km )
LMG/GQ 15 SR	4000
LMG/GQ 20 SR	6000
LMG/GQ 25 SR	9000
LMG 30 SR	12000

\*When installing self-lubricating modules, grease fittings are not included as standard.

If required, please contact us.

\*The self-lubricating modules are pre-filled with specialized lubricant upon shipment.

If the lubricant level in the module is insufficient, please consult us.

\*Due to factors such as the operating environment and conditions of the self-lubricating modules, the lubrication replenishment interval should be adjusted based on the actual situation.



## Characteristics

- Can be used in combination with other lubrication solutions
- Wide range of applicable environmental temperatures
- No flowing oil, protecting the equipment environment
- Can be used simultaneously with lubricating grease; only a small amount of oil is required to achieve lubrication, making it environmentally friendly
- Effectively extends maintenance cycles, reduces maintenance costs, and comprehensively extends the service life of guide rails

## Applications

- Automation equipment
- Electronic machinery
- Industrial machinery
- Other

## Specifications

(1) Non-Interchangeable type

LMG/GQ20C2SSP1GR+R1000-20/20PII

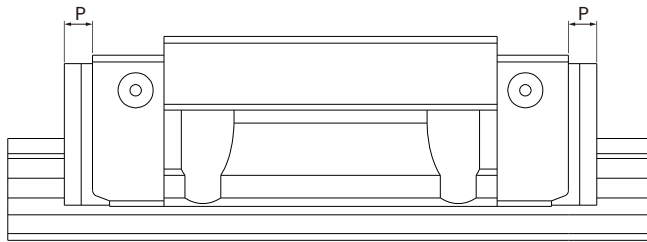
Self-Lubricating Module: GR

(2) Interchangeable type

LMG/GQ20CSSP0GRN

Self-Lubricating Module: GR

## Dimension parameters

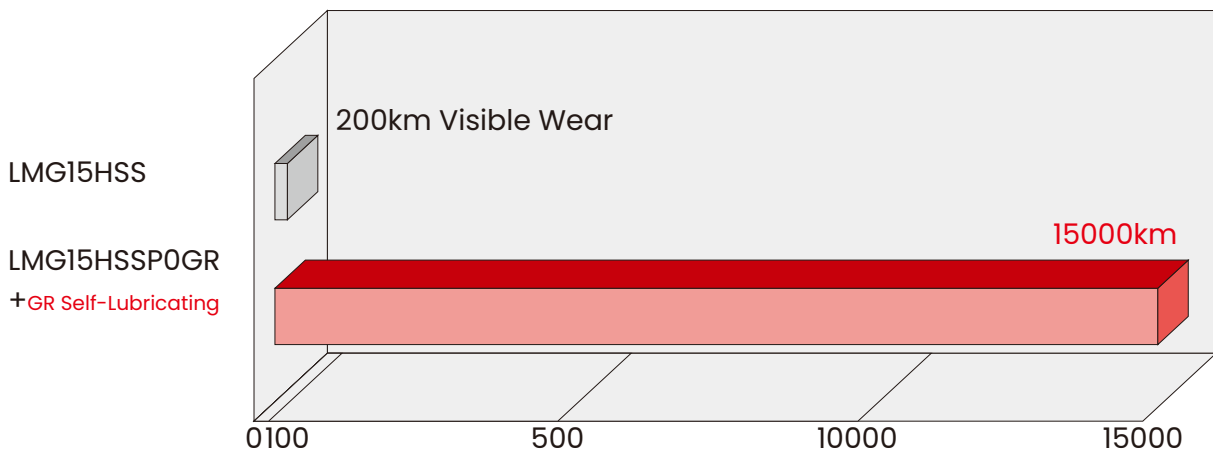


Extended size of Carriage

Model No.	P×2
LMG15/GQ15	10
LMG20/GQ20	10
LMG25/GQ25	10
LMG30	18
LMG35	18
LMG45	18
LMG55	18

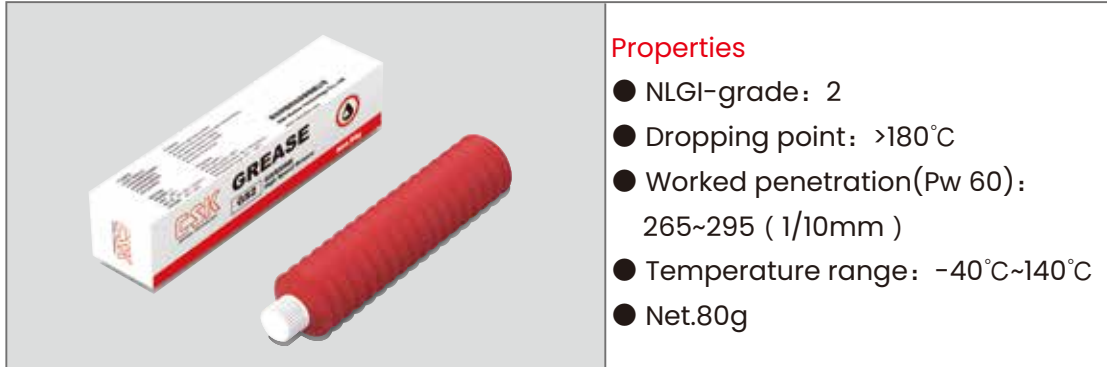
## Test conditions

Model No.	Test conditions
Size	LMG15H2SSP0GR+R1200-30/30
Speed	150m/min
stroke	1000mm
Payload	145kgf



\*When installing self-lubricating modules, grease fittings are not included as standard.

If required, please contact us.



#### Description

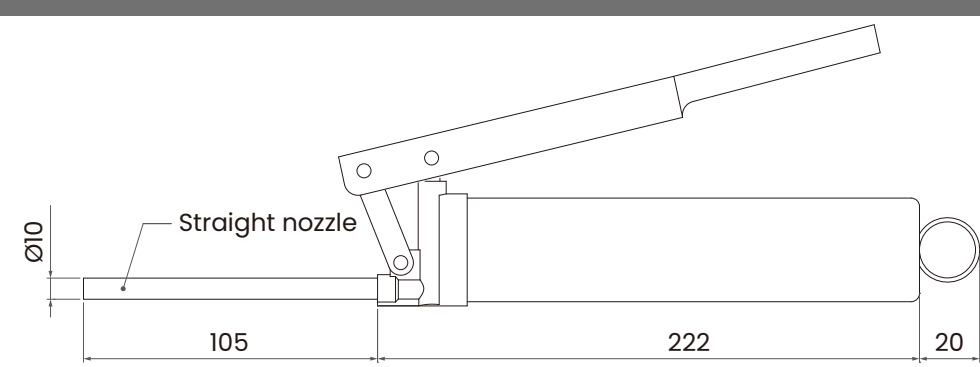
GS2 is an adhesive, lithium soap based lubricating grease designed for long-term application. Suitable for high speed operation.

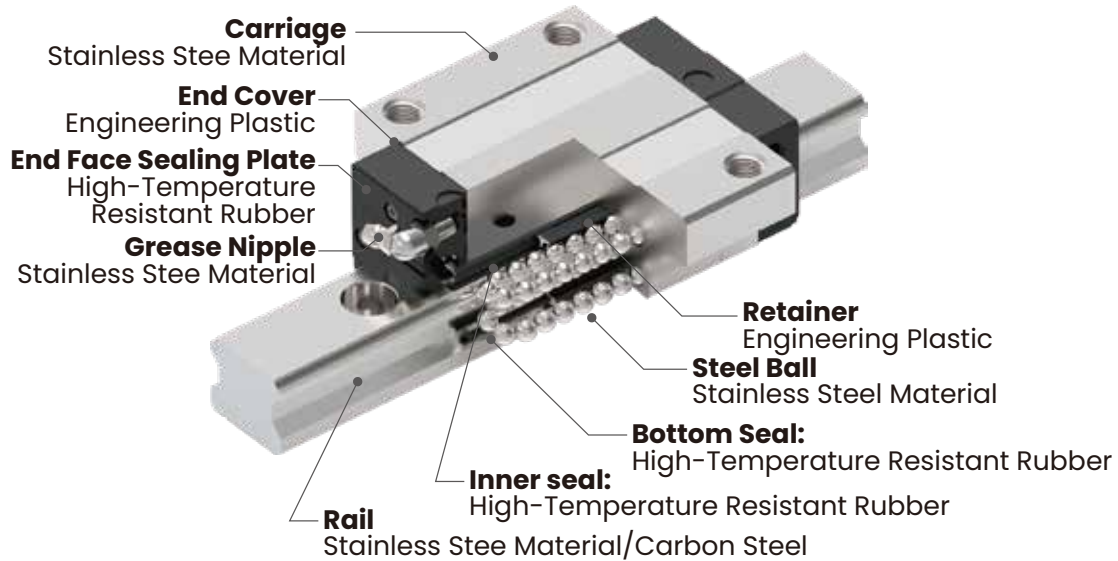
#### Advantages

- Suitable for life-time lubrication
- Water resistant
- Work stable
- Protects from corrosion, even in the presence of salt water
- Suitable for high thermal loads
- Good adhesiveness
- Suitable for low temperatures
- Mechanically high loadable

## Grease gun LG80

LG80 : Grease gun for GS2.

Model No.	
Dimension	
Specifications	<ol style="list-style-type: none"> <li>1. Discharge pressure: 300kg/cm<sup>2</sup></li> <li>2. Weight ( excluding the grease ) : 0.5kg</li> <li>3. Grease: 80g in a bellows tube</li> </ol>



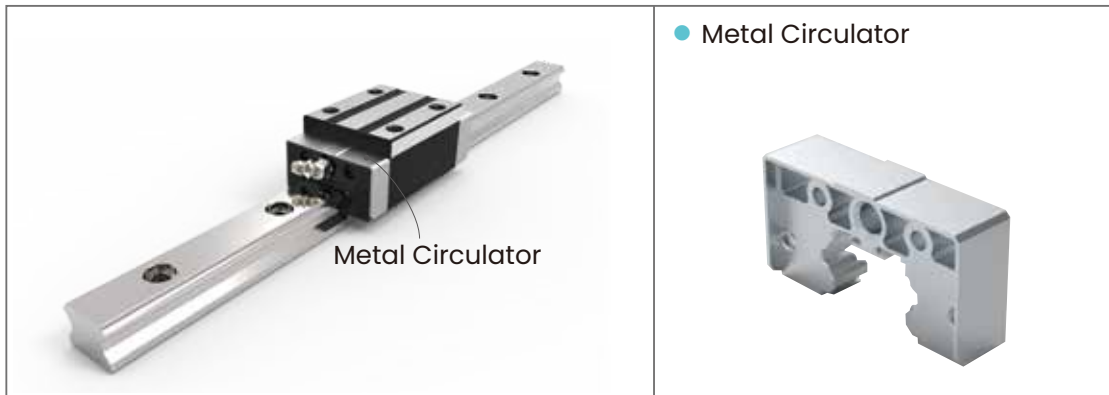
## Characteristics

- High corrosion resistance
- Suitable for high-temperature environments
- Superior impact resistance
- Easy maintenance and long service life

## Applications

Heat Treatment Equipment  
 Automation Equipment for High-Temperature Environments  
 Woodworking Industry Equipment  
 Harsh Environments  
 Vacuum Environments  
 Areas Requiring Chemical Resistance  
 (Please inform us of the operating environment before purchase)





## Specifications

LMG 20 C M 2 SS PI +R 1000 -20 /20 P II

Series: 15 , 20 , 25 , 30 , 35 , 45 , 55

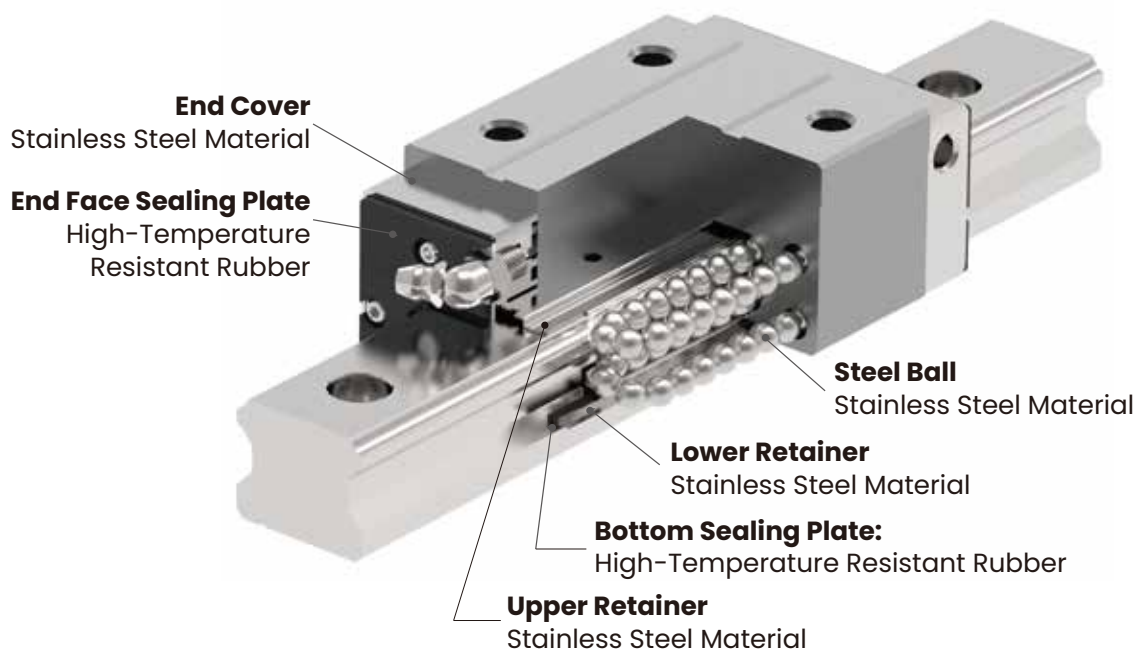
Metal Circulator: M

## Characteristics

- Enhanced the strength of the Metal Circulator
- Higher acceleration and deceleration capacity
- Superior impact resistance performance
- Suitable for use in high temperature environment
- Significantly reducing the destructive intrusion of foreign matters arising
- Does not change the total length of the standard block

## Applications

Heat treatment equipment  
 Automation equipment in high temperature environment  
 Equipment with low dust emission requirements  
 Other



## Specifications

LMG 20 C M 2 SS PI +R 1000 -20 /20 P II

Series: 15 , 20 , 25 , 30 , 35 , 45 , 55

Metal Circulator: MG

## Characteristics

- **Can be used with grease**

The end covers and retainers are made of stainless steel, while the end face and bottom sealing plates are made of high-temperature resistant rubber, enabling the slider to operate continuously in environments with a maximum working temperature of 150°C.

- **Higher Overall Strength and Impact Resistance**

The use of stainless steel for the end covers and retainers significantly enhances the wear resistance and impact resistance of the slider's circulating components compared to standard plastic parts.

- **High Corrosion Resistance**

The end covers, retainers, and steel balls are all made of stainless steel. Combined with the surface-coated slider and rail, the overall corrosion resistance of the linear guide is greatly improved, making it suitable for harsh working environments such as outdoors, high temperatures, and high humidity.

- **Suitable for Vacuum Environments**

The use of stainless steel for the end covers and retainers eliminates the impact of vacuum environments on the components. When paired with vacuum-specific grease, the slider can operate stably and continuously in vacuum conditions.

## Applications

Heat Treatment Equipment

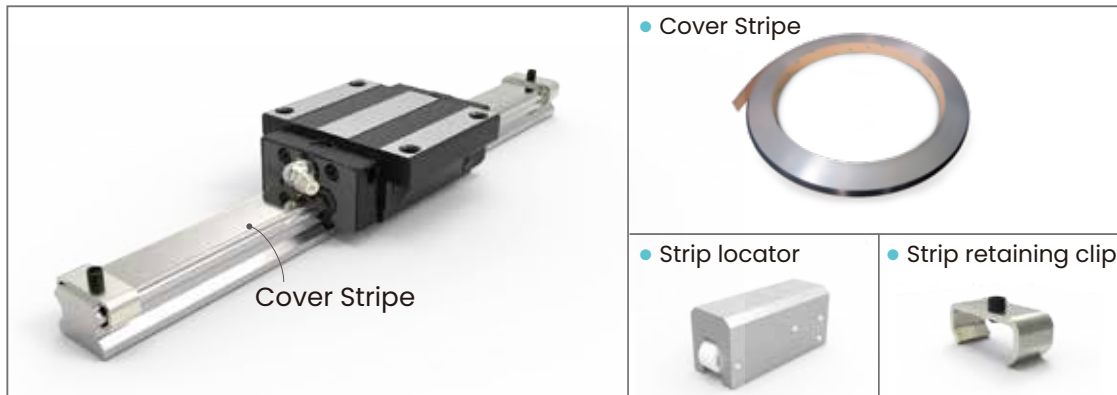
Automated Equipment in  
High-Temperature Environments

Woodworking Industry Equipment

Fields Requiring Chemical Corrosion Resistance  
(Please inform us of the operating environment  
before purchasing)

Harsh Environment Applications

Vacuum Environment Applications



### Advantages

- Simple installation and disassembly
- Prevent the intrusion of foreign matters
- No need to do special processing or individually customized rail

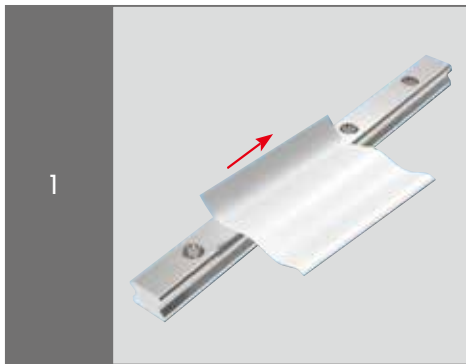
## Specifications

	LMG/GQ	20	CS	50
Series: LMG/GQ				
Size: 20 , 25				
Components				
CS : Cover Stripe				
CSL : Strip locator				
CSRC : Strip retaining clip				
The quantity ordered				
Cover Stripe: m				
Strip locator/Strip retaining clip: pcs				

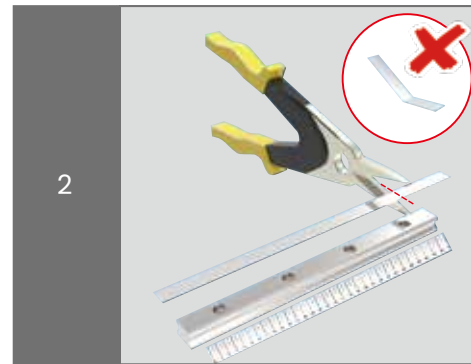
### Precautions for use:

- The cover stripe cannot be bent.
- Clean rail surface before installation.
- When installing, please wear gloves to prevent scratches.
- Cut off position, please chamfer processing.
- When cutting , make the cover stripe 1~3mm shorter than the guide rail.

## Installation

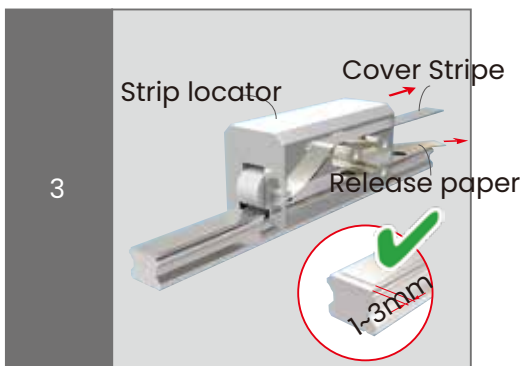


1 Clean rail surface before installation.



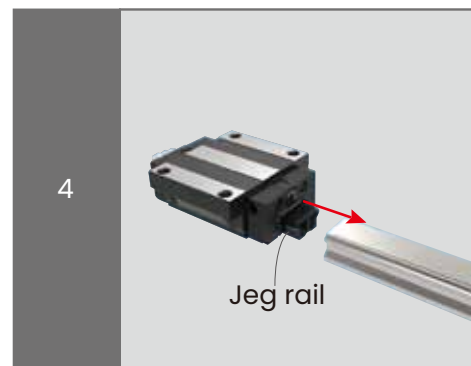
2 When cutting , make the cover stripe 1-3mm shorter than the guide rail.

⚠ The cover stripe cannot be bent.



3 Use the strip locator to install the cover stripe. Use Jeg rail mounting.

⚠ The cover stripe cannot be bent.



5 Insert strip retaining clip into the guide rail and bolt it tight.



6 Complete

**Advantages**

Improved corrosion resistance  
Accuracy is not affected  
Change the appearance

**Applications**

Chemical industry  
Automation  
Experimental environment  
Humid environment

## Specifications

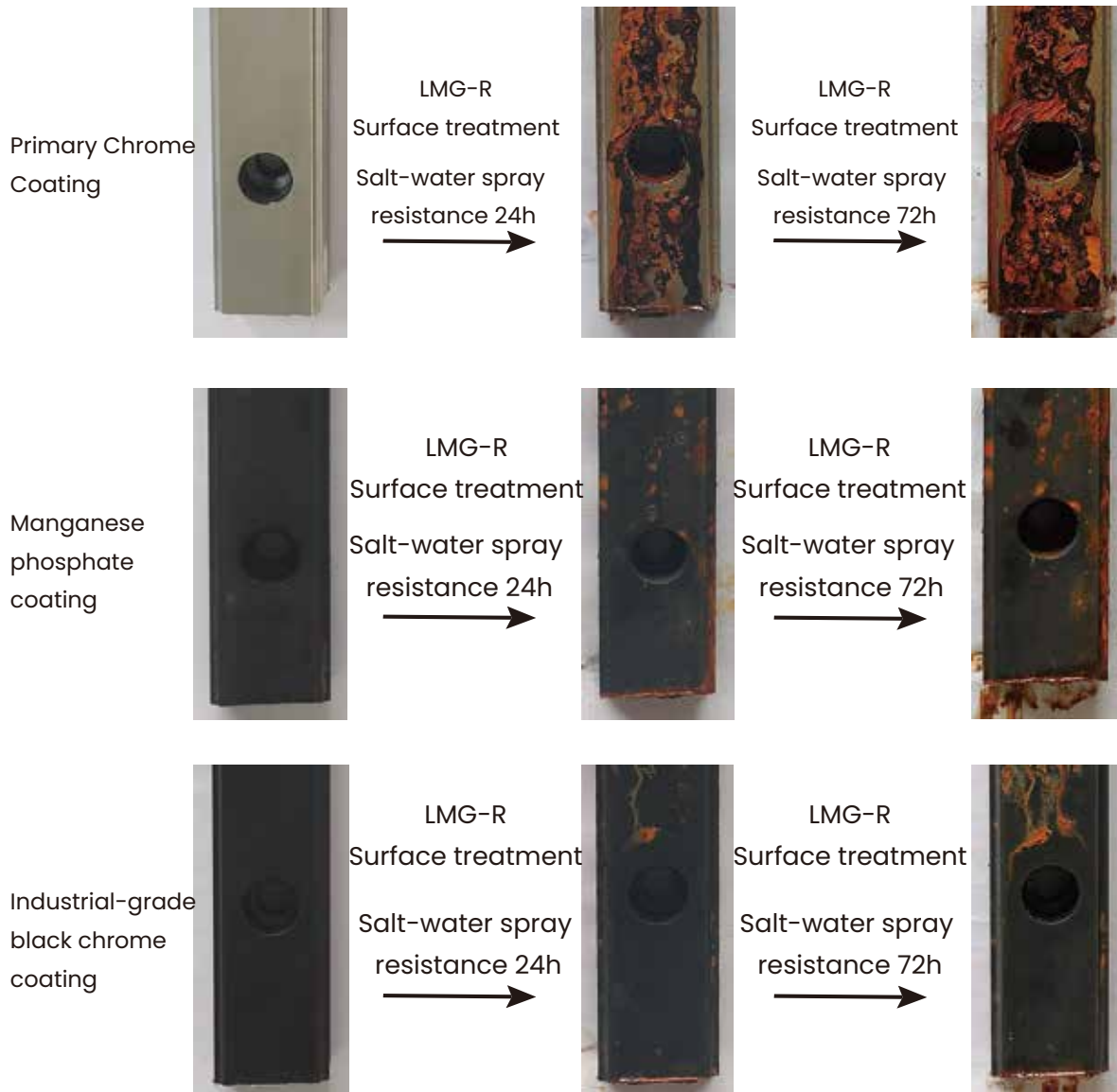
LMG/GQ 20 C 2 SS P1 B +R 1000 -20 /20 P B II

Carriage surface treatment: B

Rail surface treatment: B

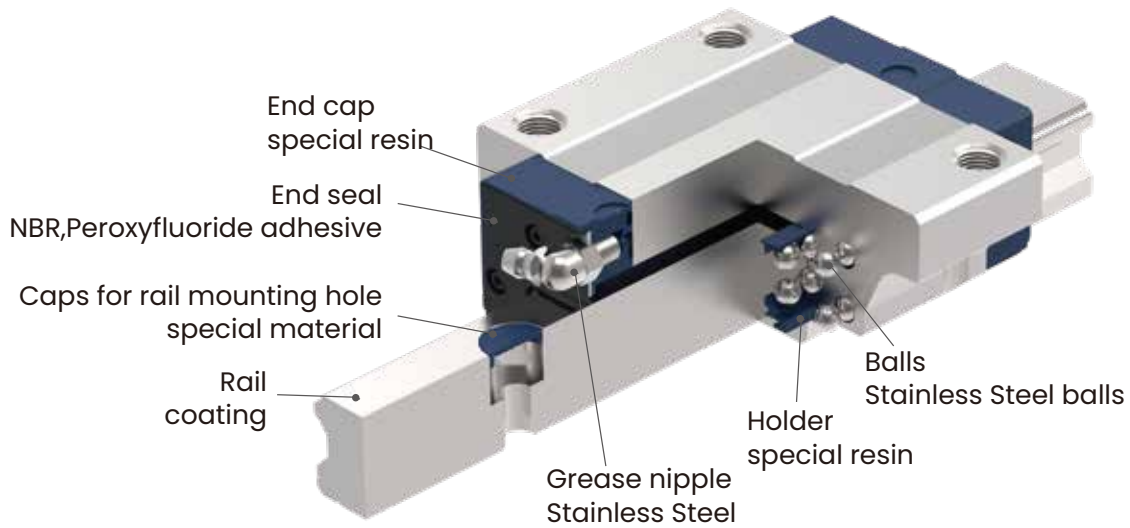
The inside of the hole is not guaranteed to be completely treated.

Test conditions



Item	Spray liquid	PH	Temperature	Humidity	Smoke collection volume
Description	5%NaCl solution	6.9	35°	85%RH	1.5ml ( 80cm <sup>2</sup> /H )

\*Industrial grade low-temperature black chromium surface treatment, commonly known as cold electroplating.



## Specifications

LMG 20 C E 2 SS PI +R 1000 -20 /20 P II

Size: 15 , 20 , 25 , 30

Anti electrolyte Corrosion: E

## Characteristics

- For the lithium battery industry, this product does not contain copper, zinc, or nickel elements.
- Plastic accessories are made of special materials that can resist the corrosiveness of battery electrolytes.
- The lubricating oil nozzle is made of stainless steel material to prevent the generation of hazardous elements during the battery manufacturing process.
- Replacing steel balls with stainless steel balls enhances the corrosion resistance of their battery electrolyte.

## Test conditions

Item	Standard Part	Anti Corrosion Part
Before testing		
Battery electrolyte immersion After 24 hours		

## Optional Accessories Table

		LMG							LMGQ		
		15	20	25	30	35	45	55	15	20	25
Dust Type	UU	○	○	○	○	○	○	○	○	○	○
	SS	○	○	○	○	○	○	○	○	○	○
	VV	○	○	○	○	○	○	○	○	○	○
	ZZ	○	○	○	○	○	○	○	○	○	○
	DD	○	○	○	○	○	○	○	○	○	○
	KK	○	○	○	○	○	○	○	○	○	○
Self-Lubricating Module SR Series		○	○	○	○	—	—	—	○	○	○
Solid Self-Lubricating Module GR Series		○	○	○	○	○	○	○	○	○	○
Metal Circulator M Series		○	○	○	○	○	○	○	—	—	—
Full-Metal MG Series		○	○	○	○	○	○	○	—	—	—
Stainless Steel Series	Carriage	○	○	○	○	○	○	—	○	○	○
	Rail	○	○	○	—	—	—	—	○	○	○
Cover Stripe CS Series		○	○	○	—	—	—	—	○	○	○
Anti electrolyte Corrosion E Series		○	○	○	○	—	—	—	—	—	—