

## Song #3 - Feb. 9, 1964



SHE LOVES YOU, YEAH, YEAH, YEAH. SHE LOVES YOU, YEAH, YEAH, YEAH, SHE



LOVES YOU, YEAH, YEAH, YEAH, YEAH. YOU THINK YOU'VE LOST YOUR LOVE? WELL, I



SAW HER YES-TER - DAY. IT'S YOU SHE'S THINK-ING OF AND SHE TOLD ME WHAT TO



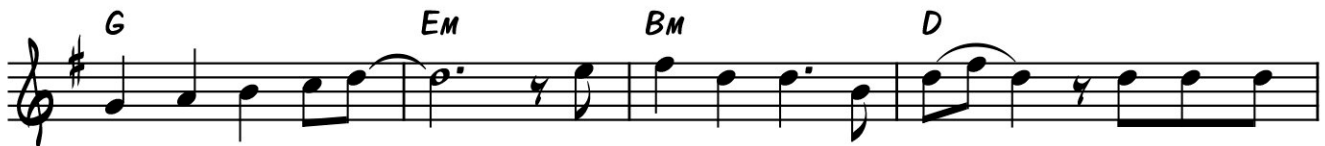
SAY: SHE SAYS SHE LOVES YOU AND YOU KNOW THAT CAN'T BE BAD.



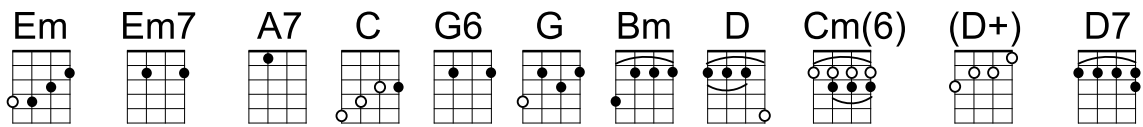
YES, SHE LOVES YOU AND YOU KNOW YOU SHOULD BE GLAD. SHE



SAID YOU HURT HER SO, SHE AL - MOST LOST HER MIND. BUT  
KNOW IT'S UP TO YOU, I THINK IT'S ON - LY FAIR.



NOW SHE SAYS SHE KNOWS - YOU'RE NOT THE HURT-ING KIND. SHE SAYS SHE }  
PRIDE CAN HURT YOU TOO A - POL - O - GIZE TO HER. BE-CAUSE SHE }



G6 Em Cm(6)

LOVES YOU AND YOU KNOW THAT CAN'T BE BAD. YES, SHE LOVES YOU AND YOU

D Em

KNOW YOU SHOULD BE GLAD. Oo! SHE LOVES YOU, YEAH,

A7 Cm(6)

YEAH, YEAH, SHE LOVES YOU, YEAH, YEAH, YEAH. AND WITH A LOVE LIKE THAT YOU

D+ D7 1. G 2. G

KNOW YOU SHOULD BE GLAD. You

Em Cm(6) D+ D7 G

WITH A LOVE LIKE THAT YOU KNOW YOU SHOULD BE GLAD.

Em Cm(6) D+ D7

WITH A LOVE LIKE THAT YOU KNOW YOU SHOULD BE

G Em

GLAD. YEAH, YEAH, YEAH, YEAH,

C G6

YEAH, YEAH, YEAH, YEAH, YEAH, YEAH!