

## Contact Us



### Phone

+34 639 46 46 74  
+34 674 78 80 24



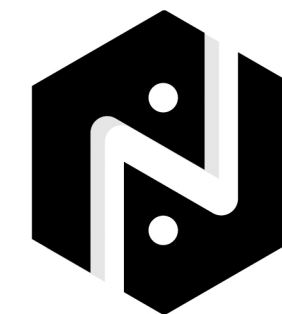
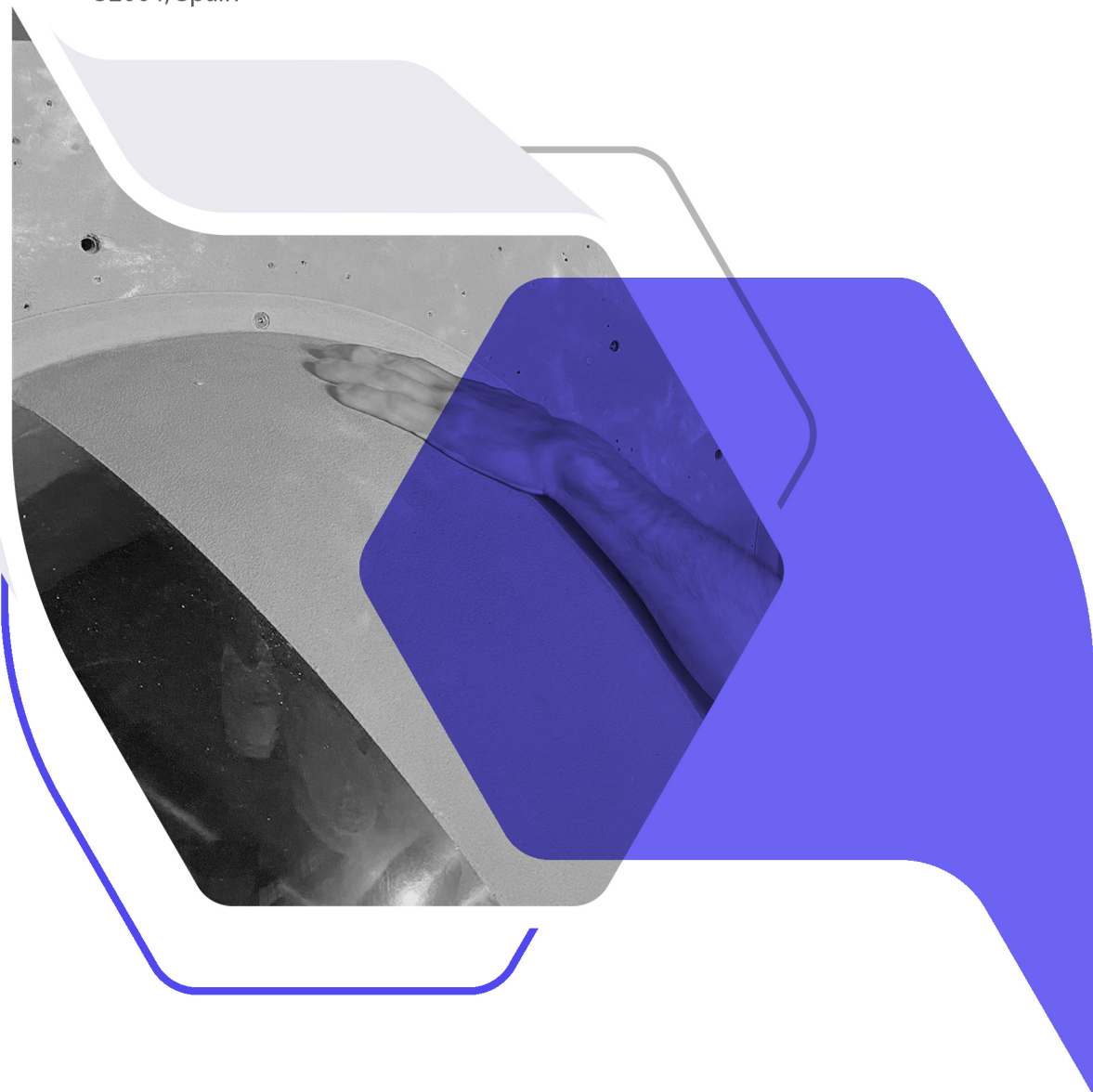
### Web

info@nextclimbingholds.com  
www.nextclimbingholds.com



### Address

Bedolla 2-4 loc9 ,Ourense  
32004, Spain



**NEXT**  
CLIMBING HOLDS



**NEXT CLIMBING HOLDS**  
CATALOG  
**2026**

[WWW.NEXTCLIMBINGHOLDS.COM](http://WWW.NEXTCLIMBINGHOLDS.COM)





# MACROS

## FIBERGLASS

This very versatile fiberglass set is designed to perform perfectly on both vertical and overhang walls.

Each set includes between 6 and 12 large Macro holds, available in dual texture or full texture finishes — ideal for setting dynamic and technical competition-style movements.

If you're looking for a multipurpose set that lets you create routes for climbers of all levels, this is exactly what you need.

## THERMOPLASTIC

This new line of thermoplastic volumes represents a major step forward in Next's product innovation.

Manufactured entirely in our new factory at Elche (Spain) using 90% recycled ABS, these volumes combine sustainability with performance.

Thanks to their unique composition, they are extremely lightweight yet highly durable — making them an ideal choice for setters looking for easy handling without compromising strength or quality.



**A competitive format that adapts to all levels. Designed for use on all types of angles and difficulties.**

# THERMOPLASTIC SETS

## EVOLUTION

After months of development, Next Climbing Holds takes a new step forward with the launch of our thermoplastic line.

Made with 90% recycled material, this new range allows us to produce holds in a more sustainable way, reducing environmental impact without compromising quality.

In addition to faster production, thermoplastic technology gives us the opportunity to expand our catalog and offer a wider variety of shapes and options for every climbing wall

## AXIS



**8 TF MACROS: 4X 62X47 & 4X 50X36CM**

**12 PU HOLDS: BETWEEN 13 X9 AND 6X7CM**

SHAPER AND RENDER



# COREX



**10 TF MACROS: BETWEEN 50X24 & 28X20CM**

**3 PU HOLDS: WITH SIZE APROX 10X9CM**

SHAPER AND RENDER

**HOLDS  
OF THE  
FUTURE**

# ANTARES



**VOL 1**  
56X37 CM



**VOL 6**  
78x48CM



**VOL 7**  
53x36CM



**VOL 2**  
60X51 CM



**VOL 5**  
67x40CM



**VOL 8**  
55x40CM



**VOL 3**  
68X47 CM



**VOL 4**  
56X37 CM



**VOL 9**  
43x25CM



SHAPER



# BOOTES



30cm



40cm



50cm



60cm



70cm



80cm



# CYGNUS

**VOL 8**



**VOL 9**



**VOL 7**



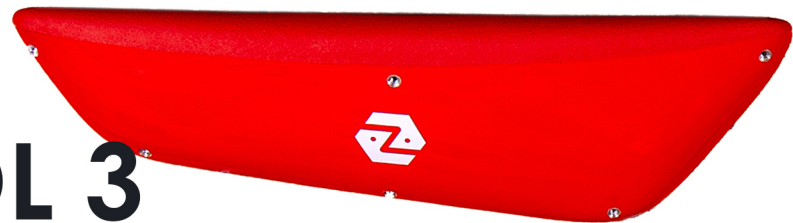
**VOL 6**



**VOL 5**



**VOL 3**



**VOL 1**



**VOL 4**



**VOL 2**



**By grip:**  
Positive  
1-2-8

Neutral  
3-4-7

Negative  
5-6-9

**Size:** medium size 65 x 21

SHAPER



# DRACO

## VOL 6



84x26cm

## VOL 5



74x22cm

## VOL 4



64x19cm

## VOL 3



49x11cm

## VOL 2



51x15cm

## VOL 1



36x7cm



SHAPER



# ERIDANUS



**VOL 1**  
74x33x18 CM



**VOL 2**  
65x38x16 CM



**VOL 3**  
60x33x12 CM



**VOL 4**  
72x30x11 CM



**VOL 5**  
57x30x15 CM



**VOL 6**  
68x35x14 CM



**VOL 7**  
41x20x11 CM



**VOL 8**  
54x25x11 CM



**VOL 9**  
46x24x9 CM



SHAPER



# HIDRA



**VOL 1**  
70x32x10 CM



**VOL 2**  
79x33x10.5 CM



**VOL 3**  
65x38x8 CM



**VOL 4**  
64x31x7,5 CM



**VOL 5**  
62x29x8 CM



**VOL 6**  
60x33x10.5 CM



**VOL 7**  
50x24x8 CM



**VOL 8**  
66x25x9 CM



**VOL 9**  
60x28x8 CM



SHAPER



# LYNX



**12 MACROS: BIGGEST 60X35CM**  
**SMALLEST 37X20CM**

# LACERTA



**8 MACROS: BIGGEST 51X28CM**  
**SMALLEST 37X21CM**

# WOODEN SETS

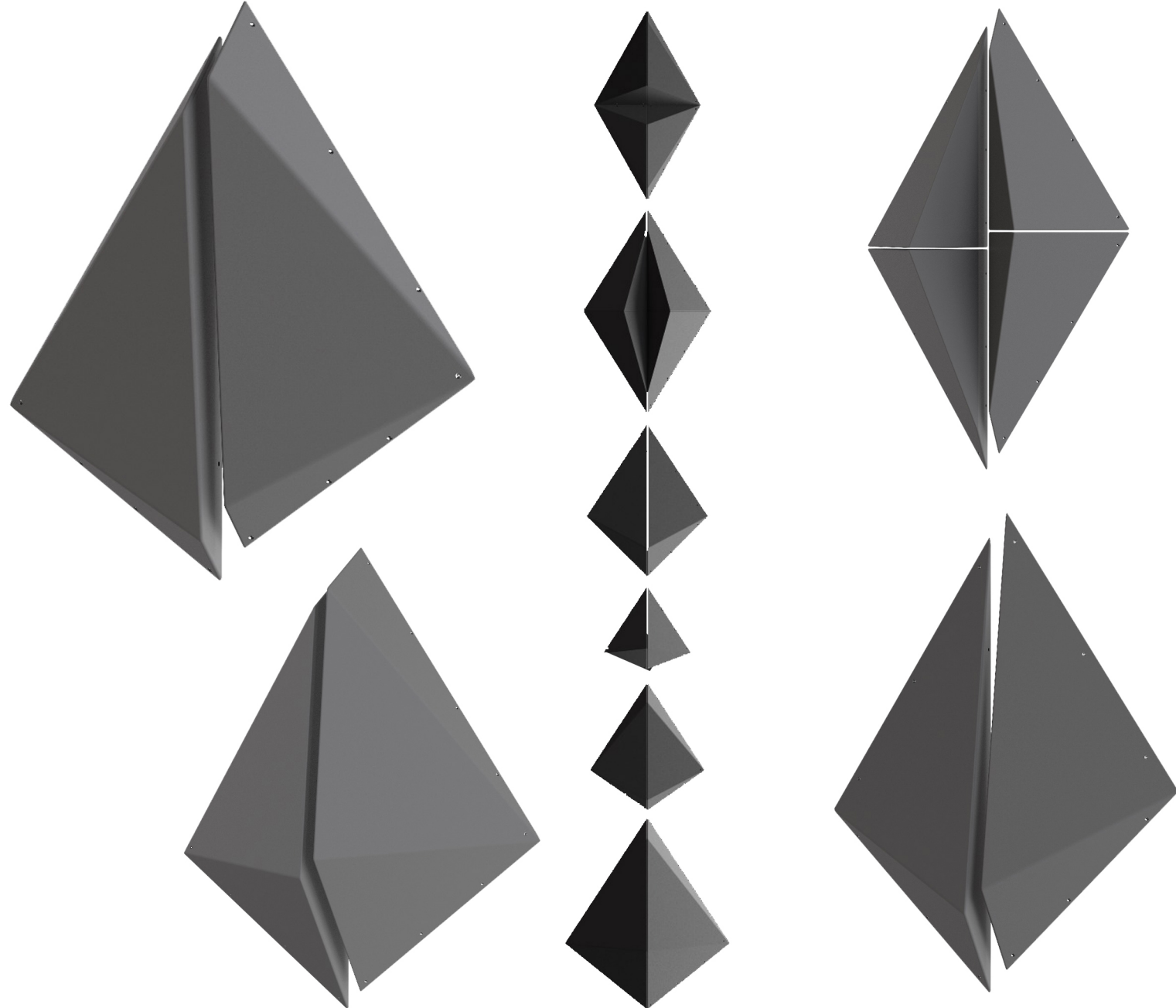
## SYMMETRY IN MOTION

The PLW sets are all about symmetry and precision.

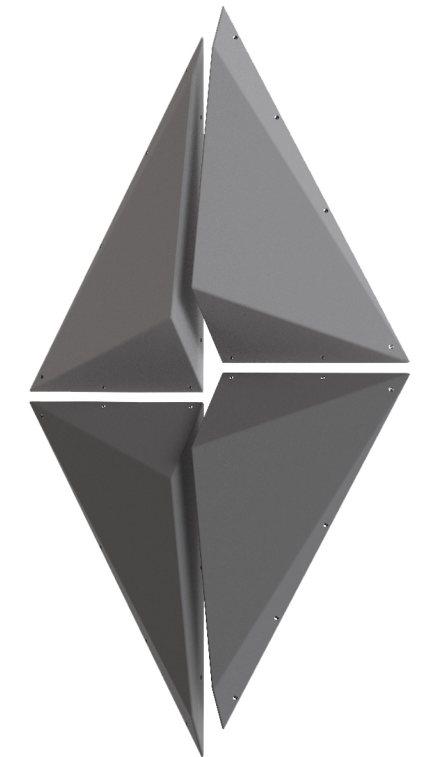
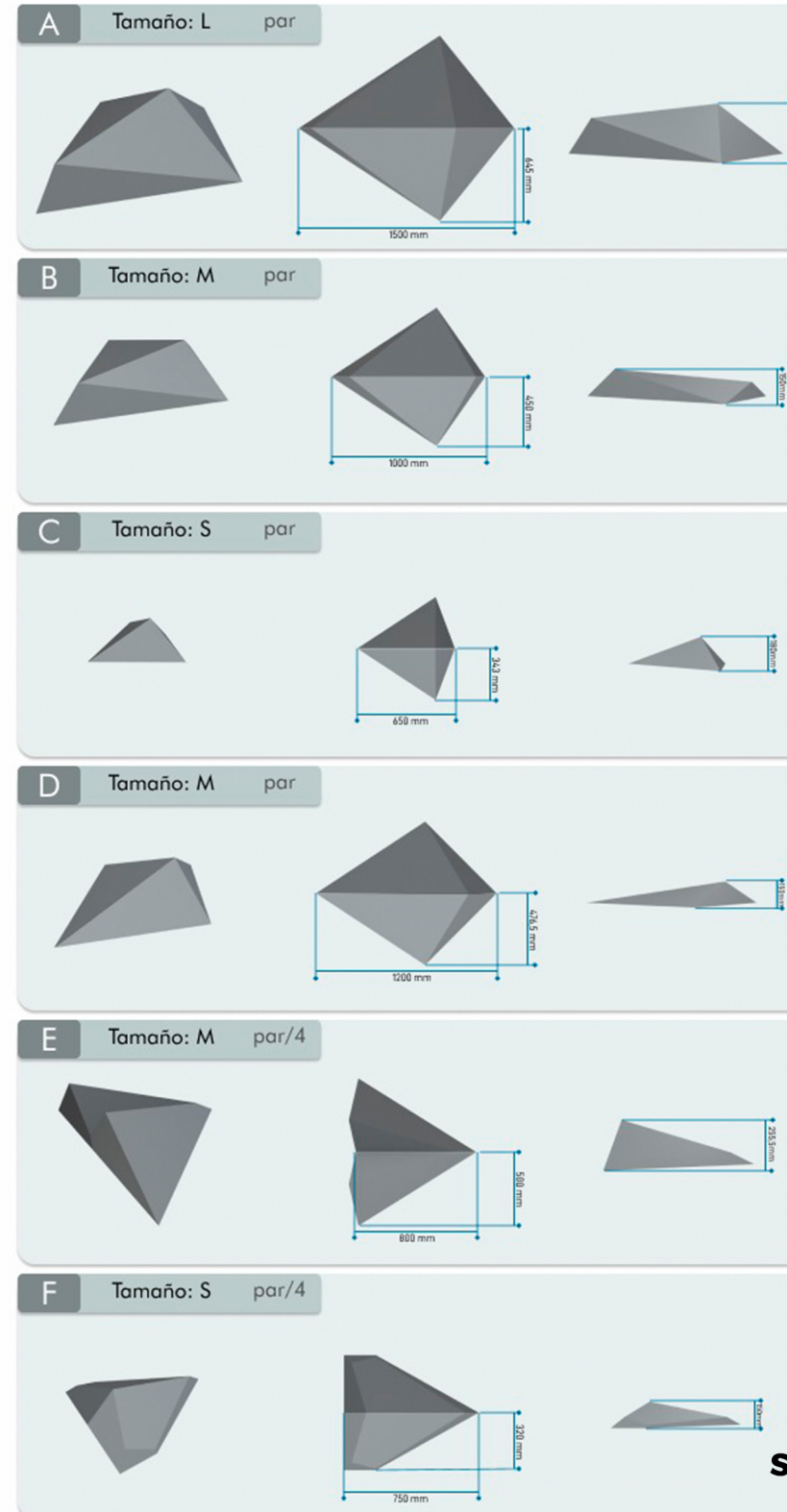
Each piece features mirrored designs that allow setters to create crack-style movements and highly engaging, fan-favorite sequences.

Available in full texture or dual texture versions, these sets offer endless possibilities for creative and balanced route setting.

Manufactured for Next by Barocka, a benchmark in PLW production, these holds combine top-quality craftsmanship with aesthetic harmony and performance.



# SUMMIT



SHAPER AND RENDER

HOLDS  
OF THE  
FUTURE

# POLIURETANE HOLDS

## LEAD AND BOULDER

Our polyurethane holds line is designed for maximum versatility, ideal for both route setting and bouldering.

Each set includes holds of different sizes, carefully combined to create packs specifically thought for boulder problems or rope routes. The mix of larger holds with dedicated foothold sets makes them perfect for a wide range of wall types and route styles.

We've also started introducing themed sets with fun and creative shapes, specially designed for kids' climbing areas — bringing color, playfulness, and imagination to the youngest climbers

## TECHNOLOGY

One of the aspects our team focuses on the most is the durability of our holds, especially in the slopers and edges sets.

Starting this season, our Laces and Accurazy sets will be produced with an epoxy coating, ensuring that the holds most exposed to wear and tear achieve greater durability and long-lasting quality.

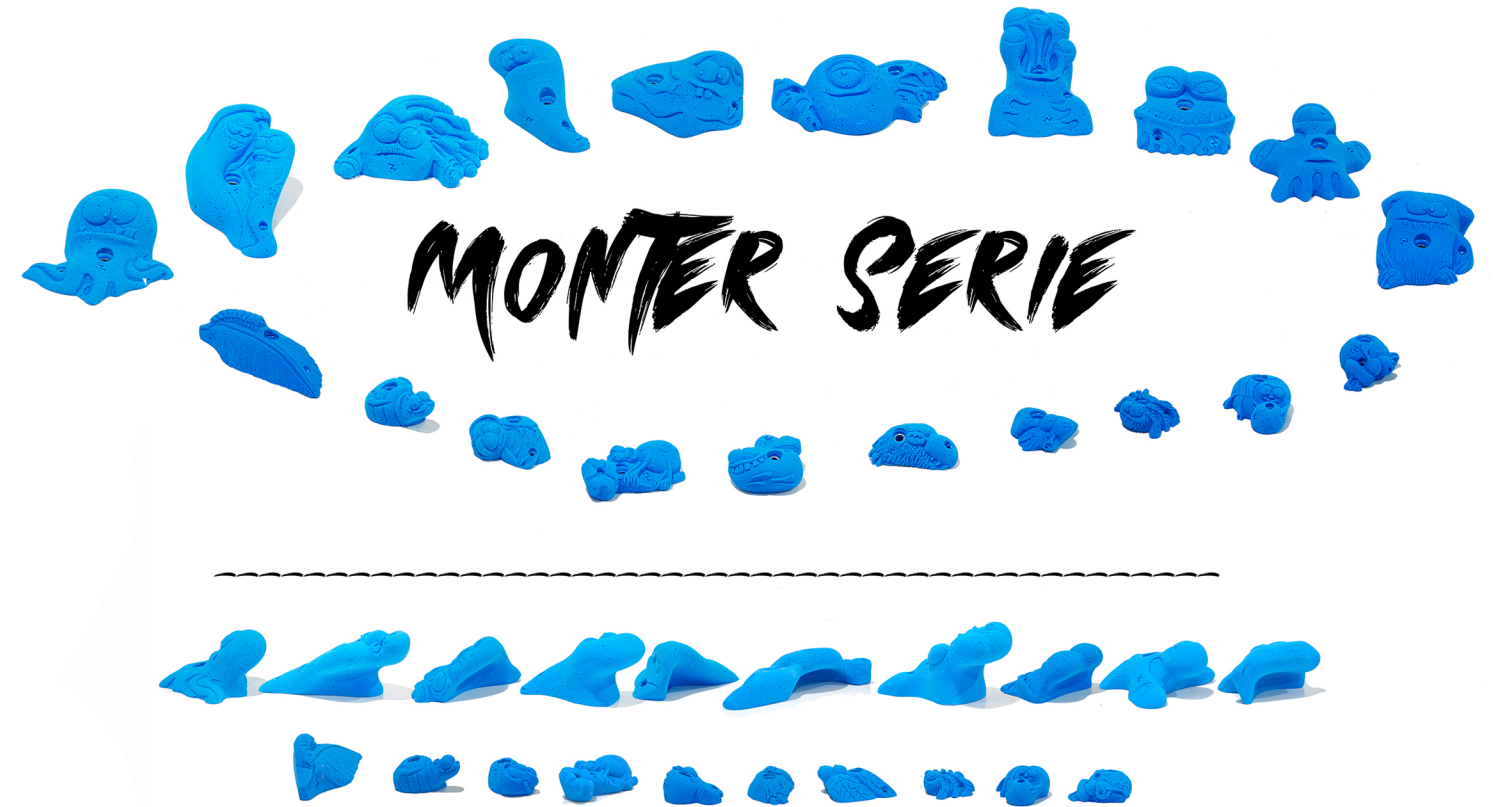
## NEW KID LINE

One of the aspects our team focuses on the most is the durability of our holds, especially in the slopers and edges sets.

Starting this season, our Laces and Accurazy sets will be produced with an epoxy coating, ensuring that the holds most exposed to wear and tear achieve greater durability and long-lasting quality.



# KIDS

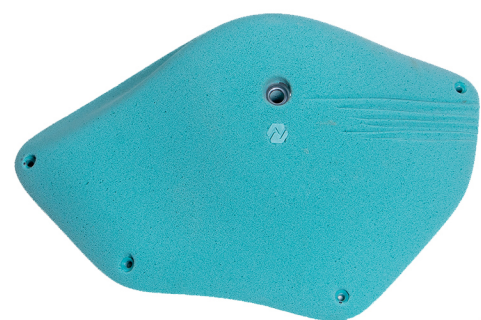


**ACCURAZY**

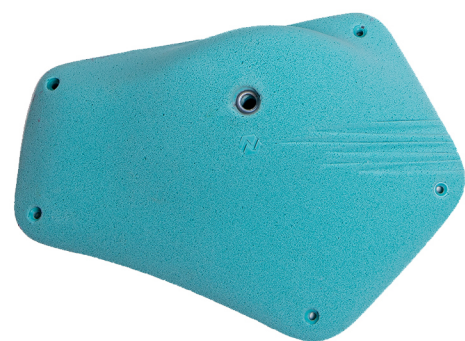
**PU LINE**



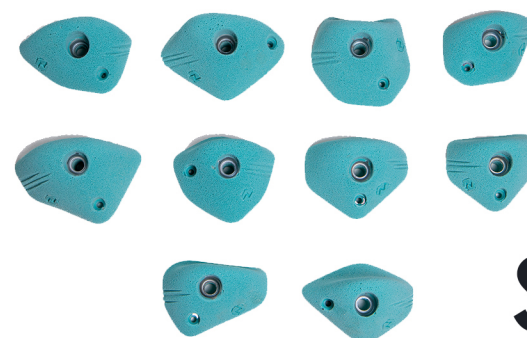
**XXL**



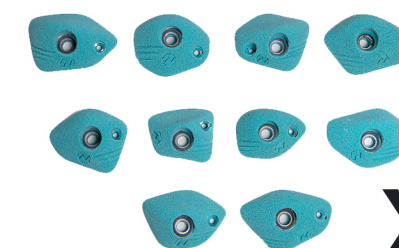
**XL**



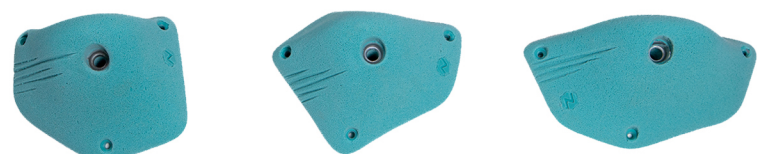
**L2**



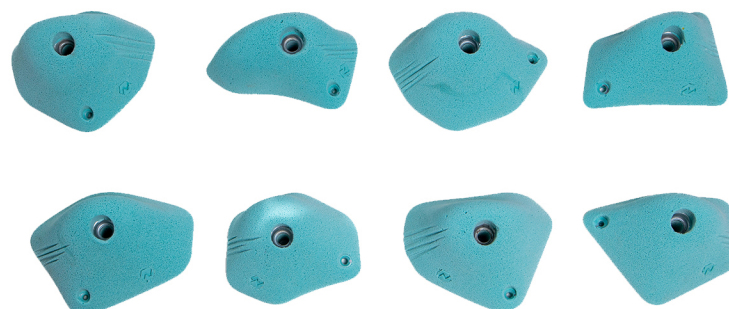
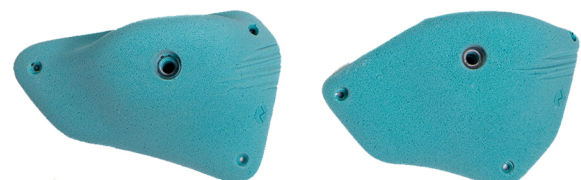
**S**



**XS**



**L1**



**M**



**SPAX**

SHAPER

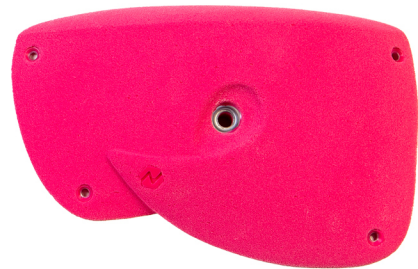


# LACES

PU LINE



XXL



XL



L2



M



S



L1



SPAX

SHAPER



# SHELL

PU LINE



XXL



XL



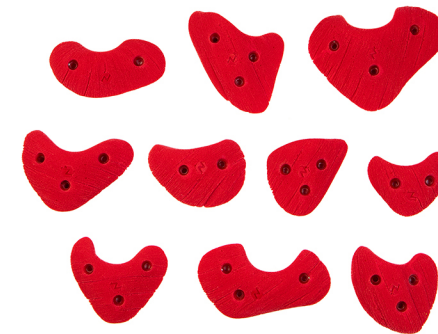
L



M



SPAX



SHAPER

# BASICS

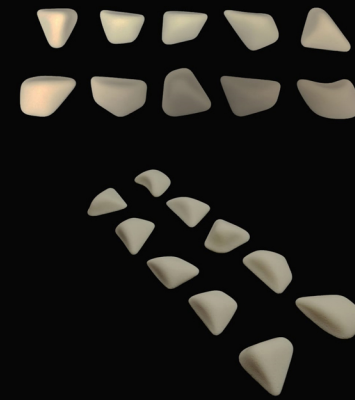
# PU LINE

## DOWNHOLD

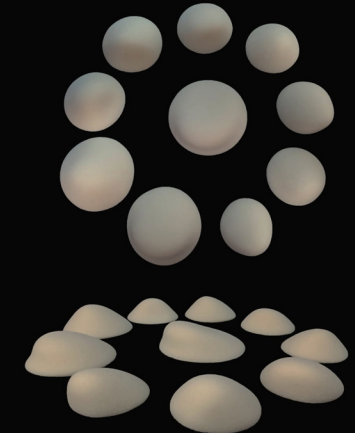


## FOOTHOLDS

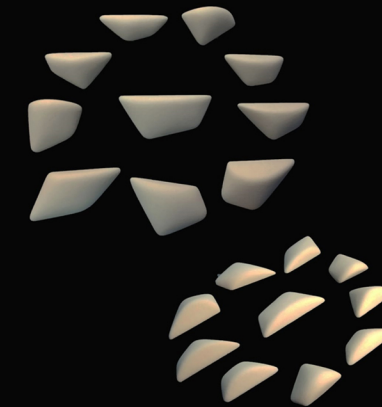
ANTARES



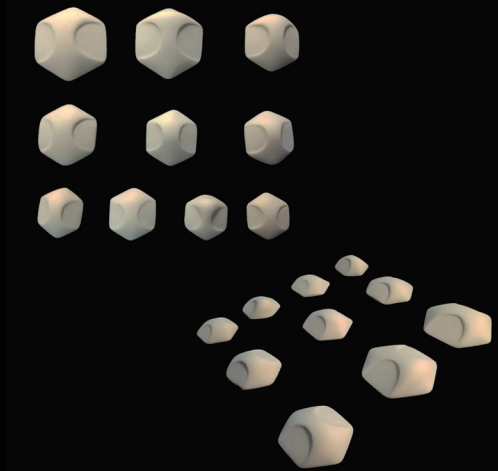
BOOTES



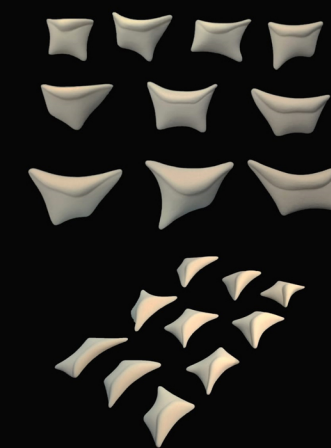
CYGNUS



DRACO



HYDRA



ERIDANUS



## OUR COLOR RANGE FULL TEXTURE OR DUAL TEXTURE

You can choose full texture or double texture and combine colors as you wish. We offer the possibility to customize the volumes with the logo of your gym.



**WHITE**  
RAL 9003



**BLACK**  
RAL 9005



**GREEN**  
RAL 6037



**ORANGE**  
RAL 2004



**MAGENTA**  
RAL 4010



**BLUE**  
RAL 5015



**MINT**  
RAL 6027



**RED**  
RAL 3020



**PURPLE**  
RAL 4008






**YELLOW**  
RAL 1021

## OUR DISTRIBUTORS

### >> Europe

-  @blackteardistribution @gprpresas
-  @docrock\_official
-  @climbing\_gripz
-  @barocka
-  @wandwerk\_kletterhallenservice
-  @kletterwand\_service
-  @lesartsdelagrime
-  @shopholds
-  @climbinggymheaven

### >> Asia

-  @planet.climbing.import
-  @oruza.kr
-  @tupclimbing\_wanhua

### >> Oceania

-  @climbicp

### >> America

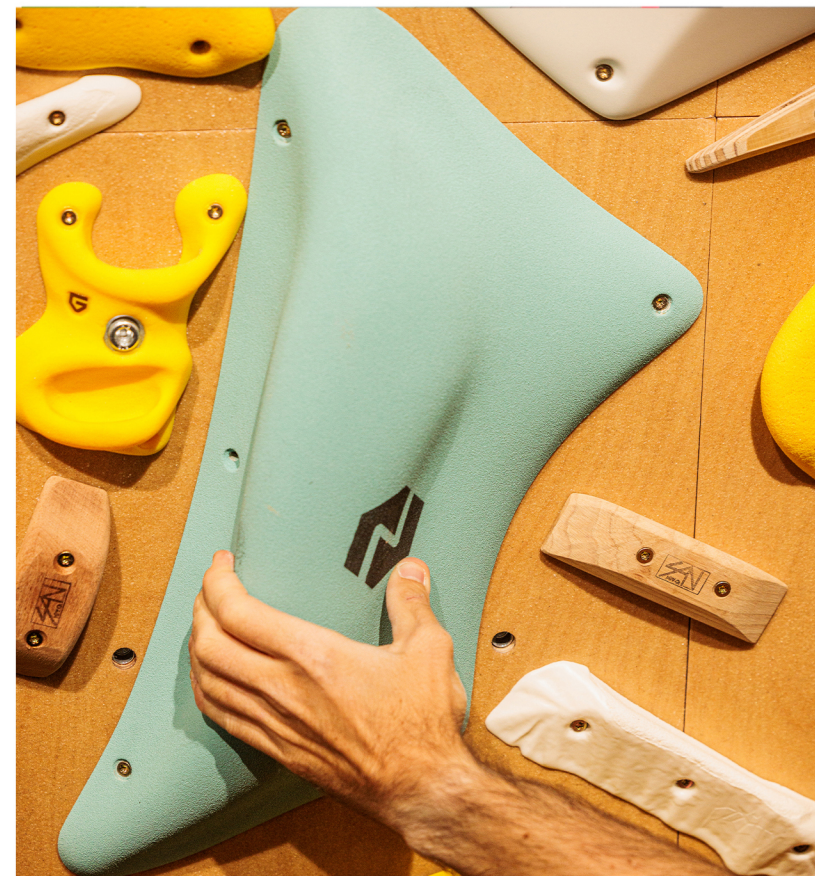
-  @vertik\_escalada

## MANUFACTURING PARTNERS

- @citywall.climbingwals
- @creatwalls.eu
- @surfacesforclimbing
- @naturalprogressionwood
- @barocka\_walls



We could do things like everyone else, but we say we are betting on a new path.



GUD CLIMBING



**NEXT**  
CLIMBING HOLDS

