



About us



R&D

Junhong embraces technological advancement and focusing on R&D is a part of the company's strategy decision. The investment into R&D amounts over 3% of its gross sales and is expected to increase even higher. More than 40 patents have been registered in USA, Europe and China, and more than 20 patterns and over 600 sizes have been developed for all season, all weather and winter tyres, for high-way terrain, all terrain and mud terrain, and for most of sedans, SUVs and MPVs.

Certificate

Meanwhile, the implementation of ISO9001 and IATF16949 quality management system allows Junhong better control in product quality. To date, products of Junhong have passed international and regional standards and obtained relevant certificates like DOT for USA, ECE&EEC for Europe, CCC for China, SIRIM for Malaysia, INMETRO for Brazil, GCC for the Middle-East, SASO for Saudi Arabia, SONCAP for Nigeria, etc.

With 10 years development, Junhong remains strong and keep growing in the market. The products of Junhong have been sold well to over 90 countries and also taken as OE for Foton Auto, DFSK Auto, Lifan Auto, Foday Auto, Zotye Auto and other auto companies, gaining great reputations from customers all over the world, a solid foundation for further development and expansion of Junhong and its group, a path for striving to the top in business.



Brand Story

The name "Antares" originated a huge red star(Scorpio constellation) in the Galaxy, because the outstanding tire wear resistance and excellent surface adaptability, and its characteristics similar to the scorpion.

World Exhibition

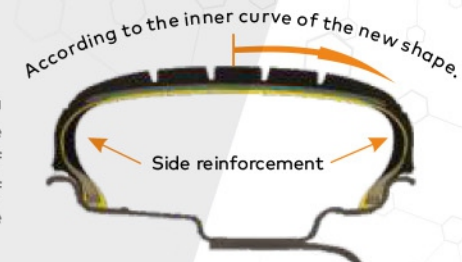
In order to let the world know Antares tires, Antares tires has been involved in the well-known tire exhibition and auto parts exhibition. Participated in the exhibition include: TIRE EXPO ASIA (Shanghai), Reifen Asia Tire, Canton Fair, Tokyo auto car show, the United States modified car show in Las Vegas (SEMA SHOW), Latin America International Tire Fair, Germany Essen tire show, Frankfurt and Dubai Tire show etc.. Perseverance, which is why Antares tires growing rapidly.





Run-flat tire principle

The outer contour of the tire is based on the new shape of the inner curve, with a layer of sidewall reinforced rubber between the inner lining and the cord. The rubber compound has a good supporting function and has the characteristics of high temperature resistance, aging resistance and high hardness. In case of lack of air, the carcass can be effectively supported to ensure the normal rolling of the vehicle is not affected.



Run-flat tire features

Inflated state



Deflated state



Traditional tire

Run-flat tire

Run-flat tire is mainly to prevent tires after a zero air pressure, the sink dropped sharply, causing the vehicle deviation. While a zero-pressured tire, the loss of grip on the ground only friction, while the other side of the tire did not lose grip, the grip is far greater than the friction, resulting in the direction of the vehicle deviation, eventually accident happens. In order to reduce or avoid the occurrence of a vicious accident, a run-flat tire will not sink to a minimum when the tire is low air pressured or zero air pressured, making it safer for driving.

Run-flat tire can still travel 80 km at a speed of 80 km/h at zero air pressure, so that ensure driving safety.

ANTARES run-flat tire sidewall marker



Series	Size	Load index	Speed rating	Extra load	Tread depth (mm)	PR	Max. pressure (psi)	Standard rim (in)
INGENS A1								
	225/40RF18	92	V	XL	8.1	-	42	8J
	225/40ZRF18	92	W	XL	8.1	-	42	8J
	245/40RF18	97	V	XL	8.2	-	49	8½J
	245/40ZRF18	97	W	XL	8.2	-	49	8½J
	215/45RF17	91	V	XL	8.1	-	42	7J
	215/45ZRF17	91	W	XL	8.1	-	42	7J
	225/45RF17	94	V	XL	8.1	-	42	7½J
	225/45ZRF17	94	W	XL	8.1	-	42	7½J
	225/45ZRF18	95	W	XL	8.1	-	49	7½J
	225/45RF18	95	V	XL	8.1	-	49	7½J
	245/45ZRF18	100	W	XL	8.1	-	49	8J
	245/45RF18	100	V	XL	8.1	-	49	8J
	255/45ZRF18	99	W		8.1	-	44	8½J
	205/50RF17	93	V	XL	8.1	-	49	6½J
	225/50RF17	98	V	XL	8.1	-	42	7J
	245/50RF18	100	V		8.1	-	44	7½J
	195/55RF16	87	V		7.0	-	41	6J
	205/55RF16	94	V	XL	8.1	-	49	6½J
	225/55RF17	101	V	XL	8.1	-	49	7J

Series	Size	Load index	Speed rating	Extra load	Tread depth (mm)	PR	Max. pressure (psi)	Standard rim (in)
AN-LOCUS								
	245/40ZRF18	97	W	XL	7.9	-	49	8½J
	245/45ZRF18	100	W	XL	7.9	-	49	8J
MAJORIS R1								
	255/50RF19	107	V	XL	7.5	-	49	8J
	235/55RF18	100	V		7.5	-	44	7½J
	255/55RF18	105	V		7.5	-	44	8J

All the data are subject to change by the manufacturer without further notice.



AN-LOCUS

LUXURY PCR TIRES



Quiet



Braking
performance



Control



Comfort



Endurance



Eco-friendly



Series	Size	Load index	Speed rating	Extra load	Tread depth (mm)	PR	Max. pressure (psi)	Standard rim (in)
35	275/35ZR19	100	W	XL	7.9	-	49	9½J
	275/35ZR20	102	W	XL	7.9	-	49	9½J
40	245/40ZR19	98	W	XL	7.9	-	49	8½J
	275/40ZR19	105	W	XL	7.9	-	49	9½J
	245/40ZR20	99	Y	XL	7.5	-	49	8½J
45	245/45ZR19	102	W	XL	7.9	-	49	8J
50	235/50ZR17	96	W		7.5	-	44	7½J

All the data are subject to change by the manufacturer without further notice.

SU-832

ECONOMY PCR TIRES



Quiet



Comfort



Control



Fuel saving

Series	Size	Load index	Speed rating	Extra load	Tread depth (mm)	PR	Max. pressure (psi)	Standard rim (in)
13	165/70R13	83	S	XL	7.0	-	42	5.00B
13 LT	165/70R13LT	88/86	S		7.0	6	54	5.00B

All the data are subject to change by the manufacturer without further notice.

HIGH-QUALITY ECONOMICAL & COMFORTABLE DRIVING EXPERIENCE.

Four longitudinal drainage main grooves and shoulder diagonally interpenetrating oblique drainage to ensure that the tire rolling on the wet road can quickly drain. Longitudinal grooves added on the longitudinal rib of the tread will help reduce the air emissions at high speed, increase the drainage effect and reduce the noise, the grip of the tire is more stable and safer to drive.





POLYMAX 4S

ALL SEASON TIRES

- Quiet
- Braking performance
- Control
- Comfort
- Drianability

JOY OF DRIVING ACCOMPANIED BY ALL SEASON

Series	Size	Load index	Speed rating	Extra load	Tread depth (mm)	PR	Max. pressure (psi)	Standard rim (in)
40	225/40R18	92	H	XL	7.5	-	49	8J
	225/40R18	92	V	XL	7.5	-	49	8J
	235/40R18	95	V	XL	7.5	-	49	8½J
	245/40R18	97	V	XL	7.5	-	49	8½J
45	215/45R17	91	V	XL	7.5	-	49	7J
	225/45R17	94	H	XL	7.5	-	49	7½J
	225/45R17	94	V	XL	7.5	-	49	7½J
	225/45R18	95	V	XL	7.5	-	49	7½J
50	205/50R17	93	V	XL	7.5	-	49	6½J
	215/50R17	95	H	XL	7.5	-	49	7J
	215/50R17	95	V	XL	7.5	-	49	7J
	225/50R17	98	H	XL	7.5	-	49	7J
55	225/50R17	98	V	XL	7.5	-	49	7J
	185/55R15	82	H		7.5	-	44	6J
	205/55R16	91	H		7.5	-	44	6½J
	205/55R16	91	V		7.5	-	44	6½J
	215/55R17	98	V	XL	7.5	-	49	7J

Series	Size	Load index	Speed rating	Extra load	Tread depth (mm)	PR	Max. pressure (psi)	Standard rim (in)
60	185/60R14	82	T		7.5	-	44	5½J
	185/60R14	82	H		7.5	-	44	5½J
	185/60R15	84	H		7.5	-	44	5½J
	185/60R15	88	H	XL	7.5	-	49	5½J
	195/60R15	88	H		7.5	-	44	6J
	215/60R16	95	H		7.5	-	44	6½J
	225/60R16	102	H	XL	7.5	-	49	6½J
	215/60R17	96	H		7.5	-	44	6½J
65	225/60R17	99	H		7.5	-	44	6½J
	175/65R14	82	T		7.5	-	44	5J
	175/65R14	82	H		7.5	-	44	5J
	185/65R14	86	T		7.5	-	44	5½J
	175/65R15	84	T		7.5	-	44	5J
	185/65R15	88	T		7.5	-	44	5½J
	185/65R15	88	H		7.5	-	44	5½J
	195/65R15	91	H		7.5	-	44	6J
70	205/65R16	95	H		7.5	-	44	6J
	215/65R16	98	H		7.5	-	44	6½J
	225/65R17	102	S		7.5	-	44	6½J
	225/65R17	102	H		7.5	-	44	6½J
	235/65R17	104	T		7.5	-	44	7J
	235/65R17	104	H		7.5	-	44	7J
	175/70R14	84	T		7.5	-	44	5J

All the data are subject to change by the manufacturer without further notice.

Single-oriented chevron design

The single-directional chevron pattern design allows for quick wiping of the water film to allow the water to flow along the open groove, providing excellent wet braking performance and excellent drainage performance, making rainy days safer and more reliable.



Optimized symmetry pattern design

By optimizing its width and arrangement order, the excellent quietness and comfort performance of the tire is ensured. According to the computer simulation of the force distribution during driving, further improve the contact area on the road surface.



The latest four seasons tire formula

According to the four seasons tire requirements and combined with the latest formula materials, research and development of the formula for the four seasons tire, it ensures that the summer tire provide safety and comfort performance in winter snow performance.



Plugless nylon cap band designed

The use of winding plugless nylon cap layer, a better tie belt reducing tread creep, improve the tire's performance in high speed and handling.



Adopting special tire formula, optimizing the pattern and carcass structure, so that not only the brake and control performance of icy and snow roads are excellent, but also provides a great performance in summer, especially in wet and dry braking performance and excellent quietness performance.



SU-830

COMFORT PCR TIRES



Endurance



Fuel saving



Drivability



Comfort

FUEL SAVING, THE CHOICE OF COMFORT.

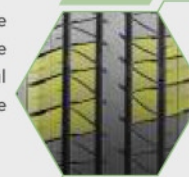
Series	Size	Load index	Speed rating	Extra load	Tread depth (mm)	PR	Max. pressure (psi)	Standard rim (in)
50	195/50R15	82	V		8.1	-	36	6J
	195/55R15	85	V		8.1	-	36	6J
55	205/55R16	91	V		8.1	-	44	6½J
	215/55R16	93	V		8.1	-	44	7J
60	185/60R14	82	H		8.1	-	36	5½J
	195/60R14	86	H		8.1	-	36	6J
	185/60R15	84	H		8.1	-	36	5½J
	195/60R15	88	H		8.1	-	44	6J
	205/60R15	91	H		8.1	-	36	6J
	205/60R16	92	H		8.1	-	36	6J
	215/60R16	95	H		8.1	-	44	6½J
	225/60R16	98	H		8.1	-	36	6½J
65	235/60R16	100	H		8.1	-	36	7J
	175/65R14	82	H		8.1	-	36	5J
	175/65R14	86	T XL		8.1	-	42	5J
	185/65R14	86	H		8.1	-	36	5½J
	185/65R15	88	H		8.1	-	36	5½J
	195/65R15	91	H		8.1	-	36	6J
	205/65R15	94	H		8.1	-	36	6J
	215/65R15	96	H		8.1	-	36	6½J
	215/65R16	98	H		8.1	-	44	6½J

Series	Size	Load index	Speed rating	Extra load	Tread depth (mm)	PR	Max. pressure (psi)	Standard rim (in)
70	175/70R13	82	T		8.1	-	36	5.00B
	185/70R13	86	T		8.1	-	36	5.50B
	175/70R14	84	T		8.1	-	36	5J
	175/70R14	88	S XL		7.5	-	42	5J
	185/70R14	88	T		8.1	-	36	5½J
	195/70R14	91	T		8.1	-	36	6J
	195/70R14	91	H		8.1	-	36	6J
	205/70R14	95	T		8.1	-	36	6J
	205/70R14	95	H		8.1	-	36	6J
	205/70R15	96	T		8.1	-	36	6J
80	215/70R15	98	T		8.1	-	36	6½J
	165/80R13	83	T		7.5	-	35	4.50B
60 LT	215/60R16C	108/106	S		8.1	8	65	6½J
	215/60R16C	108/106	R		8.1	8	65	6½J
65 LT	205/65R15C	102/100	S		8.1	6	54	6J
	215/65R15C	104/102	S		8.1	6	51	6½J
	215/65R16LT	109/107	S		8.1	8	65	6½J
70 LT	175/70R14LT	95/93	T		8.5	6	54	5J
	175/70R14C	95/93	T		8.1	6	54	5J
	175/70R14C	95/93	T		7.5	6	54	5J
	205/70R15C	106/104	S		8.1	8	65	6J
80 LT	165R13C	94/93	S		7.5	8	65	4.50B

All the data are subject to change by the manufacturer without further notice.

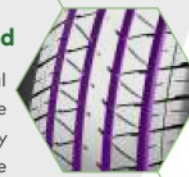
Symmetry, double guide pattern

Symmetry, double guide pattern design, the tire wear more evenly, effectively prevent the phenomenon of partial wear. The central continuous rib to improve the performance of the anti-skid performance on wet road.



Four longitudinal grooves widened

Optimum position of the four longitudinal grooves designed to ensure that the tire rolling on the wet road can be quickly drained, so that the tire firmly grasping the road, to improve the stability of the tire.



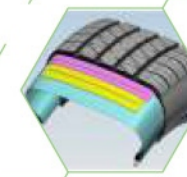
Multi-pitch blocks

Multi-pitch block arrangement of the combination of effective dispersion of road noise, to ensure quiet conditions in high-speed traffic conditions, to bring your journey a real comfort experience.



Double high modulus steel belt

The use of double high modulus steel belt layer design, enhance the rigidity of the tread, reduce the possibility of tire puncture. At the same time, it can also effectively reduce the tread peristalsis, thus providing excellent handling performance.



Designed for high-class cars of high-quality comfort tires, patterns and appearance of a simple design, stylish and classic. The use of symmetrical pattern, to effectively prevent the tires in the wear and tear of non-standard, four longitudinal drains, to ensure rapid drainage of wet road. In the high-speed driving, its excellent comfort and stability is even more evident.



INGENS A1

HIGH PERFORMANCE TIRES



PASSION SURGING, SPEED EXPERIENCE

Single-oriented, streamlined pattern.

Single-oriented, streamlined pattern designed, both beautiful and generous without losing performance requirements! Continuous central ribs increase the stability and orientation at high speed.



Multi-pitch blocks

The variety of pitch multi-pitch block arrangement design provides quietness, bringing you a real quiet and comfort driving experience.



Widened four longitudinal grooves

Four longitudinal grooves on the tread widen the design, enhance the tire's drainage performance and anti-skid ability. When dealing with slippery pavement, it enhances the ability of the tire drainage, so that the tire firmly cling to the road.



Rim protection design

The "RIM Protector" design, special tire lip area design to protect the rim, to avoid damaging the rim on bad road condition. (With RIM Protector rim protection designed for tires sizes from aspect ratio 55 to below 55).



Passion dynamic design, sporty looking fully demonstrated. INGENS A1 combines excellent handling and comfort with numerous tests and proven improvements, no matter driving on wet or dry roads, it performs an excellent grip and excellent adaptability, its handling advantages bringing the unlimited driving pleasure to the drivers.

Series	Size	Load index	Speed rating	Extra load	Tread depth (mm)	PR	Max. pressure (psi)	Standard rim (in)
30	265/30ZR19	93	W	XL	8.1	-	49	9½J
	275/30ZR19	96	W	XL	8.1	-	49	9½J
35	215/35ZR18	84	W	XL	7.6	-	49	7½J
	255/35ZR18	94	W	XL	7.6	-	49	9J
	265/35ZR18	97	W	XL	8.1	-	49	9½J
	215/35ZR19	85	W	XL	7.6	-	49	7½J
	225/35ZR19	88	W	XL	7.6	-	49	8J
	235/35ZR19	91	W	XL	8.1	-	42	8½J
	245/35ZR19	93	W	XL	8.1	-	49	8½J
40	205/40ZR17	84	W	XL	7.6	-	49	7½J
	215/40ZR17	87	W	XL	7.6	-	49	7½J
	245/40ZR17	95	W	XL	8.1	-	49	8½J
	275/40ZR17	98	W	XL	8.1	-	44	9½J
	225/40ZR18	92	W	XL	8.1	-	42	8J
	225/40ZR18	92	Y	XL	8.1	-	42	8J
	235/40ZR18	95	W	XL	7.6	-	49	8½J
	245/40ZR18	97	W	XL	8.1	-	49	8½J
	265/40ZR18	101	W	XL	7.5	-	49	9½J
	245/40ZR19	98	W	XL	8.1	-	49	8½J
	245/40ZR20	99	Y	XL	7.6	-	49	8½J
45	195/45ZR16	84	W	XL	8.1	-	49	6½J
	195/45R16	84	V	XL	8.1	-	49	6½J
	205/45ZR16	87	W	XL	8.1	-	49	7J
	205/45ZR17	88	W	XL	8.1	-	49	7J
	215/45ZR17	91	W	XL	8.1	-	42	7J
	225/45ZR17	94	W	XL	8.1	-	42	7½J
	225/45ZR17	94	Y	XL	8.1	-	42	7½J
	235/45ZR17	97	W	XL	8.1	-	42	8J
	245/45ZR17	99	W	XL	7.6	-	49	8J
	225/45ZR18	95	W	XL	8.1	-	49	7½J
	235/45ZR18	98	W	XL	7.6	-	49	8J
	245/45ZR18	100	W	XL	8.1	-	49	8J
	255/45ZR18	103	W	XL	8.1	-	49	8½J
	225/45ZR19	96	W	XL	7.6	-	49	7½J
	255/45ZR19	104	W	XL	7.6	-	49	8½J
	285/45ZR19	111	W	XL	8.1	-	49	9½J
50	195/50R15	82	V		6.5	-	41	6J
	195/50R16	88	V	XL	7.0	-	49	6J
	205/50R16	87	V		8.1	-	41	6½J
	205/50ZR16	87	W		8.1	-	41	6½J
	205/50R17	93	V	XL	8.1	-	49	6½J
	205/50ZR17	93	W	XL	8.1	-	49	6½J
	215/50R17	95	V	XL	8.1	-	49	7J
	215/50ZR17	95	W	XL	8.1	-	49	7J
	225/50ZR17	98	W	XL	8.1	-	42	7J
	245/50ZR18	100	W		8.1	-	44	7½J
	235/50ZR19	99	W		7.6	-	44	7½J
	255/50R19	107	V	XL	8.1	-	46	8J
55	155/55R14	69	V		7.0	-	44	5J
	165/55R14	72	V		7.0	-	44	5J
	185/55R15	82	V		7.0	-	41	6J
	195/55R15	85	V		8.1	-	36	6J
	185/55R16	83	H		7.0	-	36	6J
	195/55R16	87	V		7.0	-	41	6J
	195/55R16	91	V	XL	7.0	-	46	6J
	195/55ZR16	91	W	XL	7.0	-	46	6J
55	205/55R16	91	V		7.0	-	44	6½J
	205/55R16	94	V	XL	7.0	-	49	6½J

Series	Size	Load index	Speed rating	Extra load	Tread depth (mm)	PR	Max. pressure (psi)	Standard rim (in)
55	205/55ZR16	94	W	XL	8.1	-	49	6½J
	205/55R16	94	V	XL	8.1	-	49	6½J
	215/55R16	97	V	XL	8.1	-	49	7J
	215/55R16	93	V		8.1	-	36	7J
	215/55ZR16	93	W		8.1	-	36	7J
	215/55ZR16	97	W	XL	8.1	-	49	7J
	225/55R16	99	V	XL	8.1	-	49	7J
	225/55ZR16	99	W	XL	8.1	-	49	7J
	215/55ZR17	98	W	XL	8.1	-	42	7J
	215/55R17	98	V	XL	8.1	-	42	7J
	215/55ZR17	94	W		8.1	-	44	7J
	225/55R17	101	V	XL	8.1	-	49	7J
55	225/55ZR17	101	W	XL	8.1	-	49	7J
	235/55R17	103	V	XL	8.1	-	46	7½J
	235/55ZR17	103	W	XL	8.1	-	46	7½J
60	175/60R13	77	H		8.1	-	41	5.00B
	165/60R14	75	H		7.0	-	36	5J
	185/60R14	82	H		7.0	-	36	5½J
	195/60R14	86	H		7.0	-	36	6J
	205/60R14	88	H		8.1	-	41	6J
	185/60R15	84	H		7.0	-	36	5½J
	185/60R15	88	H	XL	7.0	-	42	5½J
	195/60R15	88	H		8.1	-	36	6J
	195/60R15	88	V		8.1	-	36	6J
	205/60R15	91	H		8.1	-	36	6J
	205/60R15	91	V		8.1	-	36	6J
	215/60R15	94	H		7.6	-	44	6½J
	195/60R16	89	H		7.6	-	36	6J
	205/60R16	92	H		7.0	-	44	6J
	205/60R16	92	V		7.0	-	44	6J
	215/60R16	95	H		8.1	-	36	6½J
	215/60R16	95	V		8.1	-	36	6½J
	225/60R16	98	H		8.1	-	36	6½J
65	215/60R17	96	H		8.1	-	36	6½J
	225/60R17	99	H		8.1	-	41	6½J
	225/60R17	99	V		8.1	-	41	6½J
	225/60R18	100	V		8.1	-	41	6½J
	235/60R18	107	V	XL	8.1	-	42	7J
65	155/65R13	73	T		7.0	-	44	4.50B
	165/65R13	77	T		7.0	-	36	5.00B
	155/65R14	75	T		7.0	-	36	4½J
	175/65R14	82	T		7.0	-	44	5J
	175/65R14	82	H		7.0	-	44	5J
	175/65R14	86	H	XL	7.0	-	49	5J
	185/65R14	86	H		6.0	-	36	5½J
	175/65R15	84	H		7.6	-	36	5J
	185/65R15	88	H		6.5	-	36	5½J
	195/65R15	91	H		8.1	-	36	6J
70	195/65R15	91	V		8.1	-	36	6J
	195/65R15	95	H	XL	8.1	-	49	6J
	205/65R15	94	H		8.1	-	36	6J
	205/65R15	94	V		8.1	-	36	6J
	205/65R16	95	H		7.0	-	44	6J
	215/65R16	98	H		8.1	-	36	6½J
	235/65R16	103	T		7.6	-	44	7J
	175/70R13	82	T		7.0	-	36	5.00B
70	155/70R14	77	T		6.0	-	36	4½J
	175/70R14	84	T		7.0	-	36	5J
	175/70R14	88	T	XL	7.0	-	49	5J
	185/70R14	88	T		7.0	-	36	5½J

All the data are subject to change by the manufacturer without further notice.

NAVARRO
TIRES



MAJORIS M5

LUXURY PCR TIRES



Quiet



Braking
performance



Control



Comfort



Endurance



Eco-friendly

THE KING OF CITY , EXCLUSIVE LUXURY

13-14

MAJORIS M5

LUXURY PCR TIRES

ANTARES

Series	Size	Load index	Speed rating	Extra load	Tread depth (mm)	PR	Max. pressure (psi)	Standard rim (in)
30	235/30ZR20	88	Y	XL	8.1	-	49	8½J
	245/30ZR20	90	W	XL	8.1	-	49	8½J
	255/30ZR22	95	W	XL	8.1	-	49	9J
	285/30R22	101	V	XL	8.1	-	46	10J
	295/30ZR22	103	W	XL	8.1	-	49	10½J
35	225/35ZR20	90	W	XL	8.1	-	49	8J
	245/35ZR20	95	Y	XL	8.1	-	49	8½J
	305/35ZR20	104	Y		8.1	-	44	11J
	315/35ZR20	110	W	XL	8.1	-	49	11J
	295/35ZR21	107	Y	XL	8.1	-	49	10½J
	265/35R22	102	V	XL	8.1	-	46	9½J
	285/35ZR22	106	W	XL	8.7	-	49	10J
	305/35R24	112	V	XL	8.1	-	46	11J

Series	Size	Load index	Speed rating	Extra load	Tread depth (mm)	PR	Max. pressure (psi)	Standard rim (in)
40	255/40ZR20	101	W	XL	8.1	-	49	9J
	275/40ZR20	106	W	XL	8.1	-	49	9½J
	265/40R22	106	V	XL	8.1	-	46	9½J
	305/40R22	114	V	XL	8.7	-	46	11J
	285/40R24	112	V	XL	8.1	-	46	10J
45	255/45ZR20	105	W	XL	8.1	-	49	8½J
	295/45ZR20	114	W	XL	8.1	-	49	10J
	305/45ZR20	116	W	XL	8.7	-	49	10J
	275/45R22	112	V	XL	8.7	-	46	9J
	285/45R22	114	V	XL	8.7	-	46	9½J
50	265/50R20	111	V	XL	8.7	-	46	8½J
	275/55R20	117	V	XL	8.7	-	46	8½J

All the data are subject to change by the manufacturer without further notice.

Wide horizontal groove design

Wide straight shoulder groove, perform an excellent drainage and anti-skid. At the same time we improved the handling and stability in the high-speed driving.



Dragon needles tread pattern

As the "dragon-like" tread pattern design, beautiful and generous. Pattern grip strong, turning the tire deformation due to the smaller, so that the tire bites the road.



Wavy vertical groove

The middle two continuous wave-shaped longitudinal groove design, which provides fully control in the cornering. Super tire grip goes on even driving on wet road.



Crown silent block design

Scientifically distributed in the crown silent blocks and fine patterns, effectively improve the quiet performance of the tire. At the same time also enhance the handling in the initial performance.



High-performance tires designed for luxury cars and professional tires for personalization. Tread with silicone formula, two wavy longitudinal groove design, it gives an excellent handling stability, shoulder blocks strengthened, effectively improve the steering and wear resistance. Distribution in the tread mute block tiny lines, which improve the mute performance.

MAJORIS M5



TAURUS T1

ECONOMY PCR TIRES



Endurance



Fuel saving



Drianability



Comfort

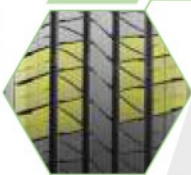


FUEL SAVING, THE CHOICE OF COMFORT.

Designed for high-class cars of high-quality comfort tires, patterns and appearance of a simple design, stylish and classic. The use of symmetrical pattern, to effectively prevent the tires in the wear and tear of non-standard, four longitudinal drains, to ensure rapid drainage of wet road. In the high-speed driving, its excellent comfort and stability is even more evident.

Symmetry, double guide pattern

Symmetry, double guide pattern design, the tire wear more evenly, effectively prevent the phenomenon of partial wear. The central continuous rib to improve the performance of the anti-skid performance on wet road.



Multi-pitch blocks

Multi-pitch block arrangement of the combination of effective dispersion of road noise, to ensure quiet conditions in high-speed traffic conditions, to bring your journey a real comfort experience.



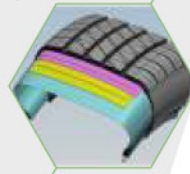
Four longitudinal grooves widened

Optimum position of the four longitudinal grooves designed to ensure that the tire rolling on the wet road can be quickly drained, so that the tire firmly grasping the road, to improve the stability of the tire.



Double high modulus steel belt

The use of double high modulus steel belt layer design, enhance the rigidity of the tread, reduce the possibility of tire puncture. At the same time, it can also effectively reduce the tread peristalsis, thus providing excellent handling performance.



Series	Size	Load index	Speed rating	Extra load	Tread depth (mm)	PR	Max. pressure (psi)	Standard rim (in)
60	215/60R16	95	H		8.1	-	36	6½J
	225/60R16	98	H		8.1	-	36	6½J
65	195/65R15	91	H		8.1	-	36	6J
	205/65R15	94	H		8.1	-	36	6J
70	215/70R15	98	T		8.1	-	36	6½J

Series	Size	Load index	Speed rating	Extra load	Tread depth (mm)	PR	Max. pressure (psi)	Standard rim (in)
70 LT	215/70R15LT	104/101	S		8.1	8	65	6½J

All the data are subject to change by the manufacturer without further notice.

LUXURY PCR TIRES



Series	Size	Load index	Speed rating	Extra load	Tread depth (mm)	PR	Max. pressure (psi)	Standard rim (in)
60	185/60R14	82	H		8.8	-	36	5½J
	195/60R15	88	H		9.5	-	36	6J
65	185/65R15	88	H		9.5	-	36	5½J
	195/65R15	91	H		9.5	-	36	6J
	205/65R15	94	H		9.5	-	36	6J
70	165/70R13	79	T		8.7	-	36	5.00B
	165/70R14	81	T		5.8	-	36	5J
80	185/80R14	95	S	XL	8.1	-	41	5J

Series	Size	Load index	Speed rating	Extra load	Tread depth (mm)	PR	Max. pressure (psi)	Standard rim (in)
70 LT	195/70R15C	104/102	S		11.0	8	65	6J
	225/70R15C	112/110	S		11.5	8	69	6½J
80 LT	155R12LT	88/86	S		8.7	8	65	4.50B
	5.50R13LT	99/97	P		9.0	12	91	4.00B
	185R14LT	102/100	T		6.5	8	65	5½J
	195R14C	106/104	S		11.0	8	65	5½J
	185R15C	103/102	S		10.5	8	65	5½J

All the data are subject to change by the manufacturer without further notice.

Lateral block design on both sides

On both sides of the shoulder near the design of a transverse block to improve the longitudinal stiffness of the tread, straight-line guidance was significantly enhanced. Effectively prevent the occurrence of skidding.



Horizontally ditch distribution

Central scientific distribution of the lateral ditch, greatly enhance the traction and grip of the tires, and significantly enhance the anti-slip ability. Ensure the stability and safety of the vehicle when it is driving on a slippery road. Shoulder lateral grooves further facilitate drainage performance.



Four widened longitudinal grooves

Optimal position design of the three zigzag grooves on the tread, design with oblique lateral grooves to increase tire grip and drainage performance.



Tread wear rubber formulations

Tread wearing a special compound formulations, it can effectively reduce scuff. It reducing rolling resistance and improve the tire traction on wet condition as well. Special formulation gives the blocks a highly tear resistance and puncture resistance.



SU-810

COMERCIAL/LT TIRES



Endurance



Drianability



Fuel saving



Control

ECO-SAVING WEAR-RESISTANT

Designed for MPV commercial vehicles and light truck developed economic wear-resistant tires, it provides less rolling resistance, high speed and fuel-efficient. The grooves are deepen and special wear-resistant formula, to ensure that the tire wear resistance.





NT 3000

COMERCIAL/LT TIRES

- Endurance
- High performance
- Fuel saving

URBAN AND RURAL ALMIGHTY,
WEAR-RESISTANT EASY TO CONTROL

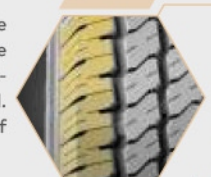
Series	Size	Load index	Speed rating	Extra load	Tread depth (mm)	PR	Max. pressure (psi)	Standard rim (in)
65	185/65R14	90	S	XL	8.5	-	49	5 1/2J
	175/80R14	92	S	XL	7.8	-	41	5J
65 LT	195/65R16C	104/102	S		10	8	69	6J
	195/65R16C	104/102	T		10	8	69	6J
	205/65R16C	107/105	T		10.2	8	69	6J
	205/65R16LT	101/98	S		10.2	8	65	6J
	215/65R16C	109/107	T		10.6	8	65	6 1/2J
	215/65R16LT	109/107	S		10.6	8	65	6 1/2J
	215/65R16LT	109/107	N		10.6	8	65	6 1/2J
	225/65R16C	112/110	S		10.6	8	65	6 1/2J
	225/65R16C	112/110	T		10.6	8	65	6 1/2J
	235/65R16C	115/113	T		10.6	8	65	7J
70 LT	165/70R13LT	88/86	S		8.7	6	51	5.00B
	175/70R14LT	95/93	S		8.5	6	51	5J
	195/70R15LT	99/96	S		10.5	8	65	6J
	195/70R15C	104/102	R		10.5	8	65	6J
	205/70R15C	106/104	S		10.2	8	65	6J
	215/70R15LT	104/101	S		10.6	8	65	6 1/2J

Series	Size	Load index	Speed rating	Extra load	Tread depth (mm)	PR	Max. pressure (psi)	Standard rim (in)
75 LT	175/75R14LT	94/91	S		8.5	8	65	5J
	185/75R16C	104/102	S		10	8	65	5J
	185/75R16C	104/102	R		10	8	65	5J
	195/75R16C	107/105	S		10.2	8	65	5 1/2J
	195/75R16C	107/105	R		10.2	8	65	5 1/2J
	205/75R16C	110/108	S		10.4	8	65	5 1/2J
	205/75R16C	110/108	R		10.4	8	65	5 1/2J
80 LT	215/75R16C	113/111	S		10.6	8	65	6J
	215/75R16C	116/114	R		10.6	10	76	6J
	175R13C	97/95	S		7.5	8	65	5.00B
	175R13LT	97/95	S		7.5	8	65	5.00B
	165R14LT	96/95	S		7.5	8	65	4 1/2J
	175R14LT	99/97	R		6.5	8	65	5J
	185R14LT	102/100	S		9.7	8	65	5 1/2J
	185R14C	102/100	R		9.7	8	65	5 1/2J
	195R15LT	106/104	S		10.5	8	65	5 1/2J
	195R15LT	107/105	S		10.5	8	65	5 1/2J

All the data are subject to change by the manufacturer without further notice.

Lateral block design

On both sides of the shoulder near the design of a transverse block to improve the longitudinal stiffness of the tread, straight-line guidance was significantly enhanced. Effectively prevent the occurrence of skidding.



Central horizontal ditch

Central scientific distribution of the lateral ditch, greatly enhance the traction. Ensure stability and safety when driving on wet road. Shoulder lateral grooves further facilitate drainage.



Three kinds of folding vertical groove

Treads on the twists and turns of the best vertical groove design, with oblique lateral grooves, enhance tire grip and drainage performance, so that the tire can firmly clinging to the road.



Jointless nylon cap band design

The use of non-joint winding nylon cap layer, with the better tie belt, improve the high-speed performance of the tire. Beam layer increases the rigidity of the tread, reducing tread creep and providing excellent handling.



Economical and wear-resistant tires developed for MPV commercial vehicles and light trucks. Tire characteristics for rolling resistance, high speed, fuel-efficient. Deepen the grooves and special wear-resistant formula to ensure that the tire wear resistance. Three tortuous vertical main groove, increase tire grip and drainage performance.



MAJORIS R1

CITY SUV TIRES

- Endurance
- Braking performance
- Quiet
- Comfort
- Control

ENJOY ELEGANT PERFECT RIDING EXPERIENCE.

Designed for SUV tires. Using a left-right asymmetrical design, a strong block on the outside provides grip on the tire during cornering, preventing tire sideslip and irregular wear. The four wider longitudinal grooves enhance the tire's drainage, straight-ahead guidance and skid resistance.

CITY SUV TIRES



Series	Size	Load index	Speed rating	Extra load	Tread depth (mm)	PR	Max. pressure (psi)	Standard rim (in)
30	285/30R22	101	V	XL	7.5		49	10J
	295/30ZR22	103	W	XL	7.5		49	10½J
35	305/35ZR20	104	Y		7.5		44	11J
	295/35ZR21	107	Y	XL	7.5	-	49	10½J
	265/35R22	102	V	XL	7.5	-	49	9½J
	285/35ZR22	106	W	XL	7.5	-	49	10J
40	305/40R22	114	V	XL	7.5	-	49	11J
45	275/45R20	110	V	XL	7.5	-	49	9J
	295/45ZR20	114	W	XL	7.5		49	10J
	305/45ZR20	116	W	XL	7.5		49	10J
	275/45R22	112	V	XL	7.5	-	49	9J
50	285/45R22	114	V	XL	7.5	-	49	9½J
	235/50R18	101	V	XL	7.5	-	49	7½J
	245/50R20	102	V		7.5	-	44	7½J
	255/50ZR20	109	W	XL	7.5	-	49	8J
55	255/50R20	109	V	XL	7.5	-	49	8J
	285/50R20	116	V	XL	7.5	-	49	9J
	215/55R18	95	H		7.5	-	44	7J
	215/55R18	99	V	XL	7.5	-	49	7J
	225/55R18	98	V		7.5	-	44	7J
	235/55R18	100	V		7.5	-	44	7½J
	255/55R18	105	V		7.5	-	44	8J
	225/55R19	99	V		7.5	-	44	7J
	235/55R19	101	V		7.5	-	44	7½J
	245/55R19	103	H		7.5	-	44	7½J
60	255/55R19	111	V	XL	7.5	-	49	8J
	275/55R19	111	H		7.5	-	44	8½J
	235/55R20	105	H	XL	7.5	-	49	7½J
	255/55R20	110	H	XL	7.5	-	49	8J

Series	Size	Load index	Speed rating	Extra load	Tread depth (mm)	PR	Max. pressure (psi)	Standard rim (in)
60	235/60R17	102	H		7.5	-	44	7J
	255/60R17	106	H		7.5	-	44	7½J
	255/60R17	110	H	XL	7.5	-	49	7½J
	235/60R18	103	H		8.1	-	44	7J
	245/60R18	105	H		7.5	-	44	7J
	255/60R18	112	H	XL	7.5	-	49	7½J
	265/60R18	110	H		7.5	-	44	8J
	285/60R18	116	S		7.5	-	44	8½J
65	275/60R20	115	H		7.5	-	44	8J
	215/65R17	99	H		7.5	-	44	6½J
	225/65R17	102	S		7.5	-	44	6½J
	225/65R17	102	H		7.5	-	44	6½J
	235/65R17	104	H		7.5	-	44	7J
	245/65R17	111	S	XL	7.5	-	49	7J
	245/65R17	111	H	XL	7.5	-	49	7J
	255/65R17	110	S		7.5	-	44	7½J
	265/65R17	112	S		7.5	-	44	8J
	265/65R17	112	H		7.5	-	44	8J
70	235/65R18	106	S		7.5	-	44	7J
	265/65R18	114	H		7.5	-	44	8J
	P275/65R18	116	S		7.5	-	44	8J
	245/70R16	111	H	XL	7.5	-	49	7J
	255/70R16	111	T		7.5	-	44	7½J
	265/70R16	112	H		7.5		44	8J
	215/70R17	101	S		7.5	-	44	6½J
75	245/70R17	110	S		7.5	-	44	7J
	245/70R17	110	T		7.5	-	44	7J
	265/70R17	115	S		7.5	-	44	8J
	265/70R18	116	S		7.5	-	44	8J

All the data are subject to change by the manufacturer without further notice.

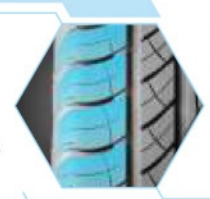
Using asymmetrical pattern design

The MAJORIS R1 is a high-performance tire designed for SUVs with asymmetrical left and right design and a strong block on the outside to provide grip during cornering to effectively prevent tire skid and irregular tire wear. It enhances the tire drainage performance to prevent the generation of tire water slide.



Multi-pitch variation of audio

Variety of pitch multi-pitch block chaotic arrangement design and optimization design, effectively improve the quietness of the tire, reduce the noise generated by the tire itself, reduce passenger irritability.



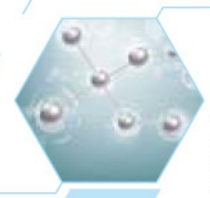
Four longitudinal grooves widening design

Four longitudinal grooves on the tread widen the design, enhance the tire's drainage performance and prevent skidding ability. When dealing with slippery pavement, can enhance the ability of the tire drainage, so that the tire firmly cling to the road.



Silicone rubber hydrophilic formula tread compound

In the tire formulation, a new generation of silicone rubber hydrophilic formula tread compound, by controlling the border density of the pattern to improve adhesion and friction between the tire and the tread, to provide vehicles with high grip on wet roads, While reducing tire rolling resistance.



COMFORT A5

CITY SUV TIRES



Quiet



Braking
performance



Comfort



Control

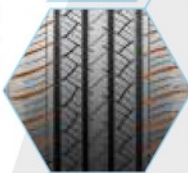


Durability

STATIC ENJOY THE CITY , BALANCED AND COMFORT.

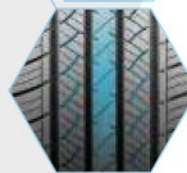
Lateral drainage ditch design on both sides

Criss-cross on both sides, the depth of different grooves designed to greatly enhance the drainage performance of the tire. Ensure that the tire rolling on the wet road surface can be quickly drained, but also enhance the friction between the tire and the road.



Central Z-shaped knife groove

Central linear pattern, increase the tire ground area to ensure that the vehicle at high speed control of the stability, security. Scientific designed of "Z" Slot, enhance tire grip and orientation.



Four vertical main channel design

Optimum position of the four longitudinal grooves designed to ensure that the tire driving on the slippery road surface can be quickly drained, so that the tire firmly grasping the road, to improve the stability of the tire.



Double sturdy steel ribbon belt design

Double sturdy steel belt, giving the tread excellent puncture resistance, impact resistance. Reduce the possibility of tire puncture.



Series	Size	Load index	Speed rating	Extra load	Tread depth (mm)	PR	Max. pressure (psi)	Standard rim (in)
30	285/30ZR20	99	W	XL	7.5	-	49	10J
	255/35ZR20	97	W	XL	8.5	-	42	9J
35	235/45ZR20	100	W	XL	8.1	-	49	8J
	245/45R20	99	V		8.1	-	44	8J
45	265/45ZR20	104	W		8.1	-	44	9J
	275/45R20	110	V	XL	7.5	-	42	9J
	265/45ZR21	104	W		8.5	-	44	9J
50	225/50R18	95	V		7.5	-	41	7J
	235/50R18	101	V	XL	7.5	-	46	7½J
	245/50R20	102	V		7.5	-	41	7½J
	285/50R20	116	V	XL	7.5	-	49	9J
55	215/55R18	95	H		7.5	-	36	7J
	215/55R18	99	H	XL	7.5	-	49	7J
	225/55R18	98	V		8.5	-	41	7J
	235/55R18	100	V		8.5	-	41	7½J
	255/55R18	105	V		8.5	-	36	8J
	255/55R18	109	V	XL	8.5	-	49	8J
	225/55R19	99	V		7.5	-	41	7J
	235/55R19	101	V		7.5	-	41	7½J
	245/55R19	103	H		7.5	-	36	7½J
	255/55R19	111	V	XL	7.5	-	46	8J
	275/55R19	111	H		7.5	-	36	8½J
60	235/60R16	100	H		8.5	-	36	7J
	225/60R17	99	V		6.8	-	41	6½J
	235/60R17	102	H		7.5	-	44	7J
	255/60R17	106	H		7.5	-	36	7½J
	235/60R18	103	H		8.1	-	44	7J
	245/60R18	105	H		7.5	-	36	7J
	255/60R18	112	H	XL	7.5	-	42	7½J
	265/60R18	110	H		7.5	-	36	8J
	285/60R18	116	S		7.5	-	44	8½J
	275/60R20	114	H		7.5	-	36	8J

Series	Size	Load index	Speed rating	Extra load	Tread depth (mm)	PR	Max. pressure (psi)	Standard rim (in)
65	P225/65R16	100	H		8.1	-	36	6½J
	215/65R17	99	H		7.5	-	36	6½J
	225/65R17	102	S		7.5	-	36	6½J
	235/65R17	104	H		7.5	-	36	7J
	245/65R17	111	S	XL	7.5	-	42	7J
	265/65R17	112	S		7.5	-	36	8J
	275/65R17	115	S		8.5	-	36	8J
	285/65R17	116	S		8.5	-	36	8½J
	235/65R18	106	S		8.1	-	36	7J
70	P275/65R18	116	S		7.5	-	44	8J
	255/70R15	108	S		8.5	-	44	7½J
	215/70R16	100	T		8.5	-	36	6½J
	225/70R16	107	S	XL	8.5	-	42	6½J
	235/70R16	106	S		8.5	-	36	7J
	235/70R16	106	H		7.0	-	36	7J
	245/70R16	107	S		8.5	-	36	7J
	255/70R16	111	S		8.5	-	36	7½J
	265/70R16	112	S		8.5	-	36	8J
75	275/70R16	114	S		8.5	-	44	8J
	245/70R17	110	S		7.5	-	36	7J
	265/70R17	115	S		7.5	-	36	8J
	265/70R18	116	S		7.5	-	44	8J
	215/75R15	100	S		7.5	-	36	6J
75 LT	235/75R15	109	S	XL	8.1	-	42	6½J
	235/75R15	105	S		8.1	-	36	6½J
	245/75R16	111	S		8.5	-	36	7J
	265/75R16	116	S		8.5	-	36	7½J
70 LT	215/70R16C	108/106	Q		8.5	6	51	6½J
	225/70R16C	102/99	S		8.5	6	51	6½J
	LT245/70R17	119/116	S		8.5	10	80	7J
	LT265/70R17	121/118	S		8.5	10	80	8J
	31×10.50R15LT	109	S		8.5	6	51	8½J
75 LT	LT215/75R15	100/97	S		8.5	6	51	6J
	LT235/75R15	104/101	S		8.5	6	51	6½J
	LT225/75R16	118/116	S		8.5	10	76	6J
	LT225/75R16	115/112	S		8.5	10	80	6J
	LT245/75R16	120/116	S		8.5	10	80	7J
80 LT	LT265/75R16	123/120	S		8.5	10	80	7½J
	LT235/80R17	120/117	Q		8.1	10	80	6½J
85 LT	LT235/85R16	120/116	S		8.5	10	83	6½J
	LT235/85R16	120/116	S		8.5	10	80	6½J

All the data are subject to change by the manufacturer without further notice.

Designed for suv. Tires built with double steel belt layer, giving the tire excellent puncture and impact resistance, tread zigzag and four broad main groove, the tire has a strong power and grip, it brings a outstanding control experience on the snow and rain road.



SMT A7

A/T SUV TIRES



ALMIGHTY CHOICE EXTRAORDINARY EXPERIENCE.

Series	Size	Load index	Speed rating	Extra load	Tread depth (mm)	PR	Max. pressure (psi)	Standard rim (in)
50	265/50R20	111	S	XL	10.5	-	49	8½J
	275/55R20	117	H	XL	10.5	-	49	8½J
60	265/60R18	110	H		10.5	-	36	8J
	285/60R18	116	T		10.5	-	36	8½J
	275/60R20	115	T		10.5	-	44	8J
65	235/65R17	104	S		10.5	-	36	7J
	265/65R17	112	S		10.5	-	36	8J
	275/65R17	115	S		10.5	-	36	8J
	P275/65R18	116	S		10.5	-	36	8J
70	255/70R15	108	S		10.5	-	36	7½J
	265/70R15	112	S		10.5	-	36	8J
	215/70R16	100	S		10.5	-	36	6½J
	225/70R16	107	S	XL	10.5	-	42	6½J
	235/70R16	106	S		10.5	-	36	7J
	245/70R16	111	S	XL	10.5	-	42	7J
	255/70R16	111	S		10.5	-	36	7½J
	265/70R16	112	S		10.5	-	36	8J
	275/70R16	114	S		10.5	-	36	8J
	245/70R17	110	S		10.5	-	36	7J
75	225/75R15	102	S		10.5	-	36	6J
	245/75R16	111	S		10.5	-	36	7J
	265/75R16	116	S		10.5	-	36	7½J
80	175/80R14	92	S	XL	9.0	-	41	5J

Series	Size	Load index	Speed rating	Extra load	Tread depth (mm)	PR	Max. pressure (psi)	Standard rim (in)
50 LT	33×12.50R20LT	114	S		10.5	10	65	10J
60 LT	33×12.50R18LT	118	S		10.5	10	65	10J
	35×12.50R20LT	121	S		10.5	10	65	10J
65 LT	35×12.50R18LT	123	S		10.5	10	65	10J
70 LT	225/70R16C	102/99	S		10.5	6	51	6½J
	LT245/70R16	106/103	S		10.5	6	51	7J
	LT265/70R16	110/107	S		10.5	6	51	8J
	LT245/70R17	119/116	S		10.5	10	80	7J
	LT265/70R17	121/118	S		10.5	10	80	8J
75 LT	27×8.50R14LT	95	Q		9.0	6	51	7J
	30×9.50R15LT	104	S		10.5	6	51	7½J
	31×10.50R15LT	109	S		10.5	6	51	8½J
	LT215/75R15	100/97	S		11.5	6	51	6J
	225/75R15C	110/108	S		10.5	6	54	6J
	LT235/75R15	104/101	S		11.5	6	51	6½J
	LT225/75R16	118/116	S		10.5	10	76	6J
	LT225/75R16	115/112	S		10.5	10	80	6J
	225/75R16LT	115/112	S		10.5	10	80	6J
	LT245/75R16	120/116	S		10.5	10	80	7J
80 LT	205R14LT	107/105	Q		10.5	8	65	6J
	205R16LT	110/108	Q		10.5	8	65	6J
85 LT	235/85R16LT	120/116	Q		10.5	10	80	6½J

All the data are subject to change by the manufacturer without further notice.

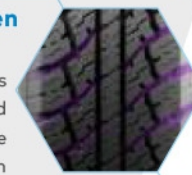
Smaller land-sea ratio design

A smaller sea-land ratio designed, block grounding area is relatively small (about 60%). Smooth horizontal grooves, to ensure smooth flow of unobstructed and super grip.



Horizontal groove to strengthen the design

The adjacent blocks between the two ribs are provided with reinforced ribs, designed to avoid excessive deformation of the pattern resulting from the twisting and torn tear and excessive wear and other issues.



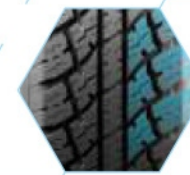
Irregular blocks

Irregular zigzag block design, enhance tire grip, effectively avoid slipping. Tested on the muddy roads, the same type of vehicle using the off-road tread traction equivalent to 1.5 times the normal pattern.



Variable pitch pattern design

Design in the design of the five-pitch variable pitch design, it can effectively reduce tire noise even driving in the mountains, off-road and other poor road conditions. Giving you a quieter driving experience.



Using thick carcass structure design, rough pattern and wide deep groove, not only has a strong traction, braking force also has automatic cleaning function. Easily deal with all kinds of complex pavement, whether rugged or soft dirt road is very applicable. Shoulder horizontal ditch, so that the tire has better grip performance and shorter braking distance.



DEEP DIGGER

4x4 OFF-ROAD TIRES

- 

Braking performance
- 

Endurance
- 

Control
- 

Drianability
- 

Eco-friendly
- 

High performance

FREEWHEELING OFF-ROAD DRIVING.

4 x 4 OFF - ROAD TIRES

ANTARES

Series	Size	Load index	Speed rating	Extra load	Tread depth (mm)	PR	Max. pressure (psi)	Standard rim (in)
45 LT	33×12.50R22LT	109	Q		14.0	10	65	10J
	33×12.50R20LT	114	Q		12.5	10	65	10J
50 LT	35×12.50R22LT	117	Q		14.0	10	65	10J
	37×13.50R24LT	120	Q		14.0	10	65	11J
55 LT	37×13.50R22LT	123	Q		17.0	10	65	11J
	285/55R22LT	124/121	Q		14.0	10	80	9J
60 LT	33×12.50R18LT	118	Q		12.5	10	65	10J
	35×12.50R20LT	121	Q		12.5	10	65	10J
	37×13.50R20LT	127	Q		14.0	10	65	11J
65 LT	33×12.50R17LT	120	Q		12.5	10	65	10J
	35×12.50R18LT	123	Q		12.5	10	65	10J
	275/65R20LT	126/123	Q		14.0	10	80	8J

Series	Size	Load index	Speed rating	Extra load	Tread depth (mm)	PR	Max. pressure (psi)	Standard rim (in)
70 LT	33×12.50R15LT	108	Q		14.0	6	36	10J
	LT305/70R16	118/115	Q		12.5	8	51	9J
	35×12.50R17LT	121	Q		14.0	10	65	10J
	LT265/70R17	121/118	Q		12.5	10	80	8J
	LT285/70R17	121/118	Q		12.5	8	65	8½J
75 LT	275/70R18LT	125/122	Q		14.0	10	80	8J
	30×9.50R15LT	104	Q		14.0	6	51	7½J
	31×10.50R15LT	109	Q		14.0	6	51	8½J
	LT245/75R16	120/116	Q		12.5	10	80	7J
	LT245/75R16	120/116	Q		12.5	10	80	7J
80 LT	LT265/75R16	123/120	Q		12.5	10	80	7½J
	285/75R16LT	122/119	Q		12.5	8	65	8J
	LT315/75R16	121	Q		14.0	8	51	8½J
	LT315/75R16	121/118	Q		14.0	8	50	8½J
	37×13.50R17LT	121	Q		14.0	8	50	11J

All the data are subject to change by the manufacturer without further notice.

Smaller land-sea ratio design

A smaller sea-land ratio designed, block grounding area is relatively small (about 46%). Smooth horizontal grooves, to ensure smooth flow of unobstructed and super grip.



Widened block

Designed for a variety of SUV tires. Blocks are widen and stiffened ribs to enhance the rigidity of the block when turning the tire, in order to avoid excessive deformation of the pattern resulting from the twisting, tearing, excessive wear and other issues.



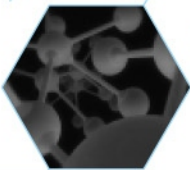
Streamline central grooves

The central streamlined grooves, ultra-wide and ultra-deep grooves, giving the tire super grip and drainage performance.



Special wear-resistant rubber design

Adopt special tread wear-resisting compound formula, can effectively reduce tire wear. Test result shown the tire life increased by 15%. At the same time the design has reduced the tire rolling resistance and improve the tire's wet traction.



Design for rocky slopes, muddy, rotten roads, fields and other harsh roads. Very sturdy shape, streamlined pattern grooves, large blocks and ultra-wide deep groove, giving the tire superb grip performance. Groove widening design and increased the stiffener, thereby enhancing the steering of the tire tread rigidity, to ensure greatly working in harsh environments.

Tire mark definition

205/55R16 94V

Speed rating
Load index
Rim diameter (inches)
Radial tire
Aspect ratio (%)
Tire section width (mm)

NAVARRO TIRES



● Aspect ratio (%)

Tire aspect ratio is the ratio of the section height (H) to the tire section width (W).

● Tire diameter calculation

Tire outer diameter (mm) = (tread width × aspect ratio / 100) × 2 + [rim diameter (RIM) × 25.4]
Example: 235 / 45R17 (235×45 / 100) × 2 + (17×25.4) = 643mm

Speed rating code chart

Speed rating code	P	Q	R	S	T	H	U	V	W	Y	ZR
Top speed(km/h)	150	160	170	180	190	210	200	240	270	300	over240

The speed rating code indicates the maximum travel speed the tire can reach under the specified conditions. ZR indicates the speed range.
The maximum speed is the maximum speed of the car travels on a straight road after the tire is properly installed.

Load index chart

Load index	60	61	62	63	64	65	66	67	68	69	70	71	72	73	74	75
Load capacity (kg)	250	257	265	272	280	290	300	307	315	325	335	345	355	365	375	387
Load index	76	77	78	79	80	81	82	83	84	85	86	87	88	89	90	91
Load capacity (kg)	400	412	425	437	450	462	475	487	500	515	530	545	560	580	600	615
Load index	92	93	94	95	96	97	98	99	100	101	102	103	104	105	106	107
Load capacity (kg)	630	650	670	690	710	730	750	775	800	825	850	875	900	925	950	975
Load index	108	109	110	111	112	113	114	115	116	117	118	119	120			
Load capacity (kg)	1000	1030	1060	1090	1120	1150	1180	1215	1250	1285	1320	1360	1400			

The load index indicates the value of the maximum load capacity of the tire under the specified conditions (kg)

Tire care guidance

ANTARES

Observe tire side conditions

Pay attention to deformation and trauma on the sidewalls to avoid some danger. Tire sidewall bulging, due to the tire inside the carcass cord is cut off and formed, continue to use is very dangerous.

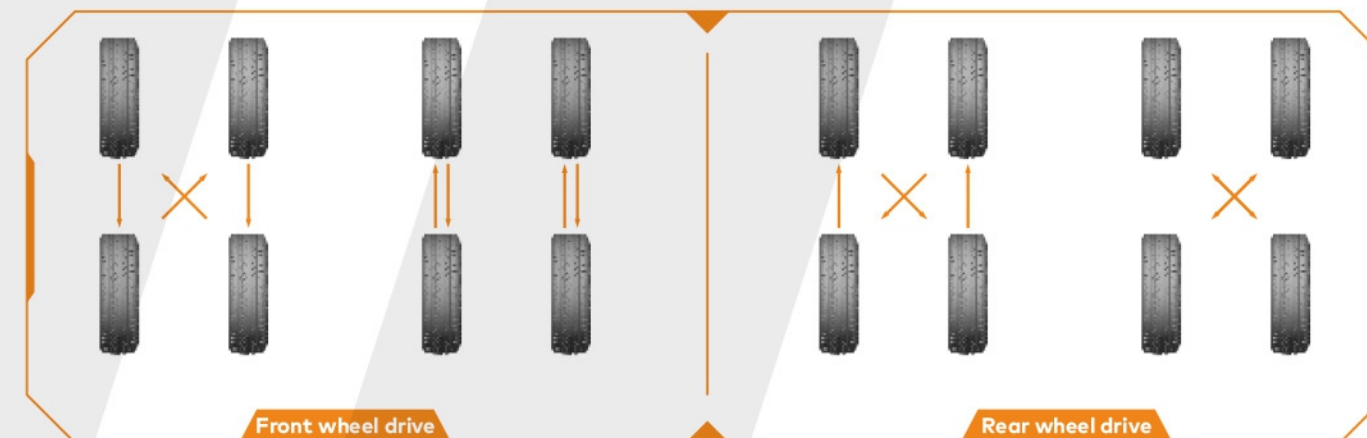
Although the tire pressure is normal, the side of the tire has occurred belt-shaped bump, which is the reason for the internal structure of the tire, called concave, it doesn't affect the tire performance, consumers can rest assured that use.

Regular replacement of the tire position to extend tire life

Tire swap refers to the tire in order to reduce abnormal or irregular worn of the tire on a regular position changing. Tires according to the installation of different locations, the degree of wear is also different. By changing the tire wear worn, thereby extending the tire life. Whenever an abnormal wear of the tire is detected, the tire must be replaced immediately. It is recommended that the tire be indexed every 5,000 km. For snow tires to pay special attention.

Once the following phenomenon occurred, you should immediately go to the tire store to check, a tire position swap is require:

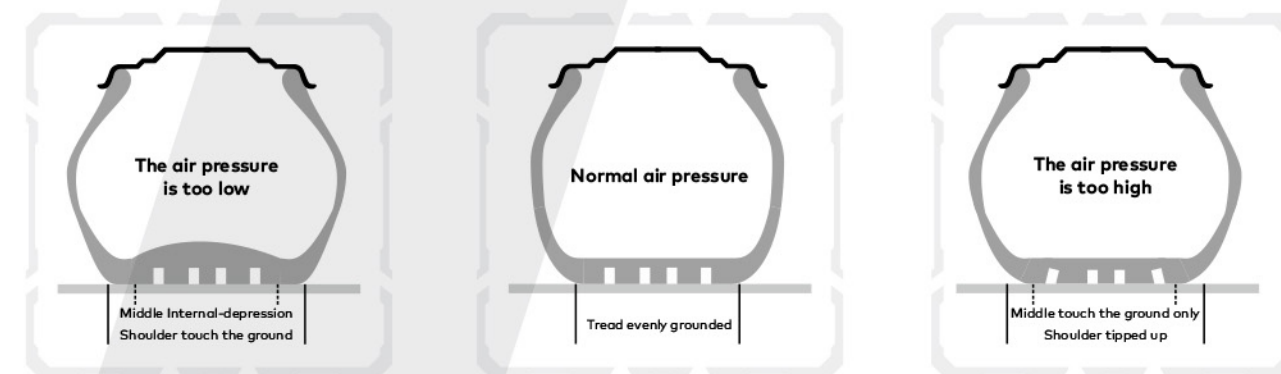
- Unusual tire jittered
- Tire noise increased
- Ride comfort reduced
- Tire life shortened



Fill in the correct pressure for optimal tire performance

The tires perform best when they are under standard pressure and the proper air pressure keeps the tire treads in uniform ground contact and prevents abnormal wear. If the air pressure is too high or too low, it will cause bad effect, as shown below:

When conditions are best selected nitrogen. Nitrogen is an inert gas, so the tire can be kept at a normal pressure for a longer time.



Insufficient inflation causes the side of the tire to over-flex, resulting in heat-induced damage to the tire, causing abnormal wear on the tire, particularly the shoulder portion.

Appropriate pressure will ensure that the tire during the best grounding surface, extending tire life. Comfortable driving experience.

Making the tire more susceptible to external factors (pits, debris, etc.) during driving.

Inadequate inflation increases the rolling resistance of the tire and reduces the fuel economy of the vehicle.

Accelerate tire wear, especially in the center of the tread. Bad driving feeling, driving stability decreased, easy to sideslip and being puncture.