

Users Manual



Available Auxiliary Upfitter Switches

AAUSXXX series product is built ready for extra lights, winches and other available aftermarket accessories in your Off-Road Vehicle, as Bronco and F150 series, Defender, Land Cruiser. Accessorywires come run under the hood, on the frontgrille, roof and to the cargo area.

More information, please visit our website

www.hanspilot.com/upfitter

WARNING: The following procedure prescribes critical repair steps required for correct restraint system operation during a crash. Follow all notes and steps carefully. Failure to follow step instructions may result in incorrect operation of the restraint system and increases the risk of serious personal injury or death in a crash.

NOTE: Removal steps in this procedure may contain installation details

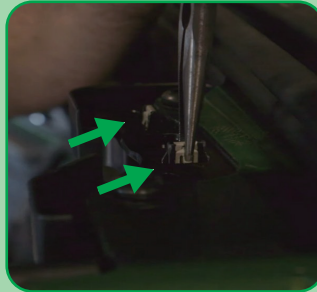
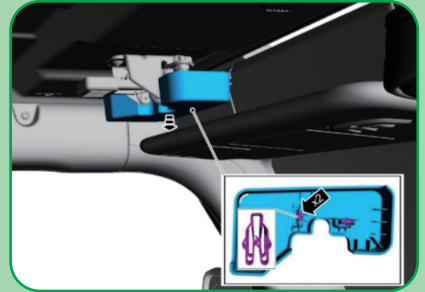
NOTE: Left hand (LH) shown, right hand (RH) similar.

Picture						
Name	Upfitter Switches	Relay Box	Extend cable	ILL cable	Spare extend cable	Nylon Rolled Belt
Serial No.	024-0255678 560-0000	024-0255688 560-0000	023-0255120 053-0000	023-0255120 054-0000	023-0255120 055-0000	

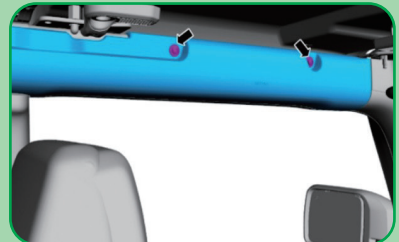
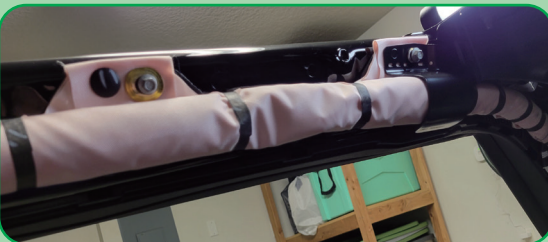
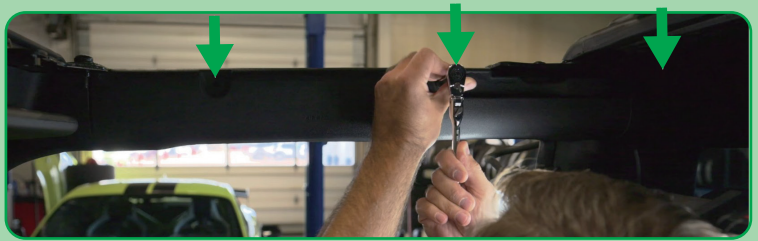
Picture						
Name	Bronco Bracket	F150 Bracket	Spare Parts	Fixing Plate	Fixing Plate	Fixing Plate
Serial No.	039-0255520 001-0000	039-0255520 002-0000		038-0255000 001-0000	038-0255000 003-0000	038-0255000 017-0000

A-Pillar Trim Panel - 5 - Door

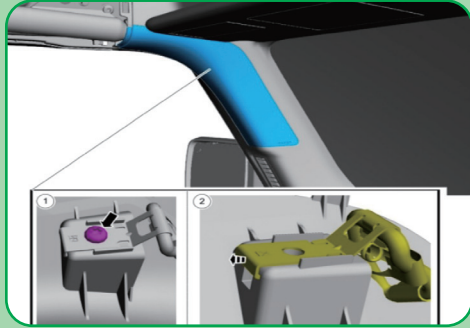
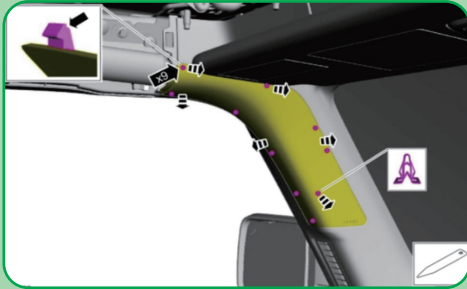
1. Retract soft top.
2. Remove small header trim panel pieces near the soft top latch (both sides).



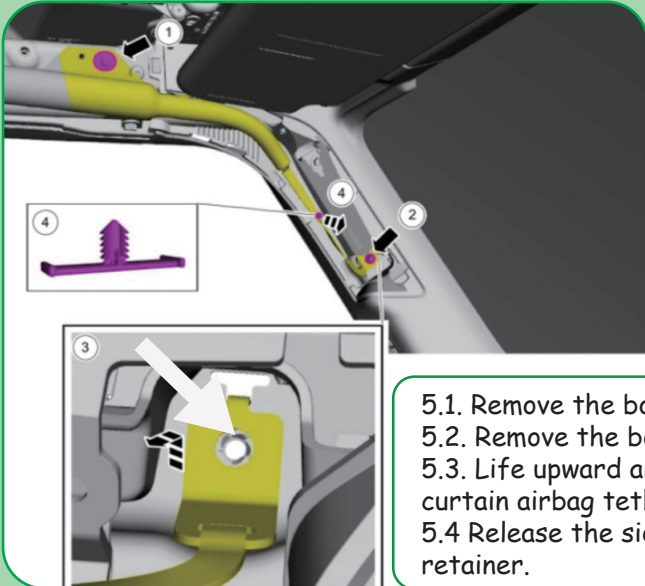
3. Remove the screws and the airbag trim from above driver and passenger roll bar. By 8mm Socket, take off 3 screws from 2 side.



4. Release the tabs and the clip and position the A-pillar airbag plastic trim panel cover aside.



5. Loosen hardware mounting the driver and passenger airbags to the roll bar and the clip fastening the airbags to the a pillar.



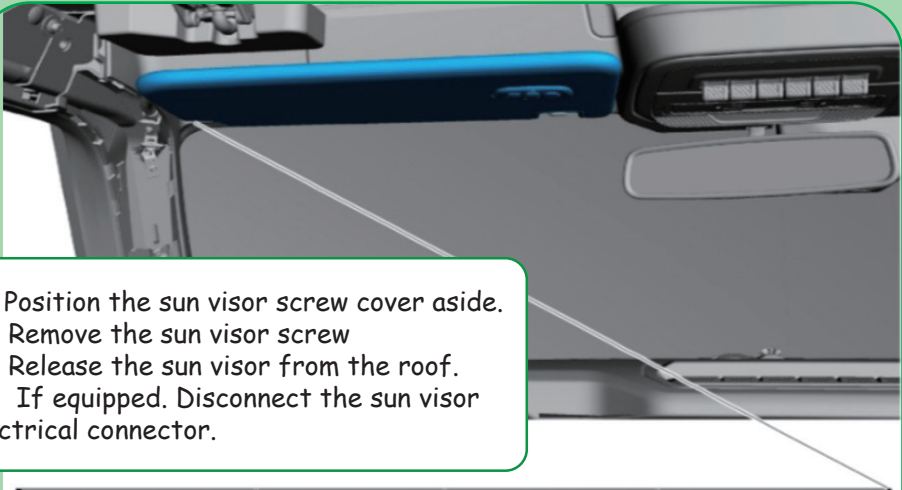
- 5.1. Remove the bolt.
- 5.2. Remove the bolt.
- 5.3. Lift upward and outward on the side curtain airbag tether clip and position aside.
- 5.4 Release the side curtain airbag pintype retainer.



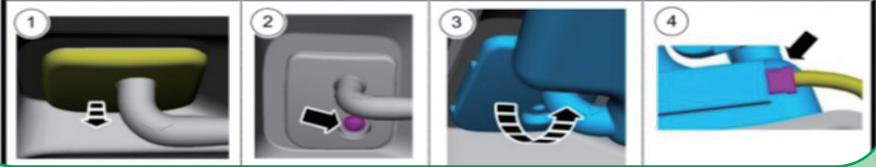
8mm socket



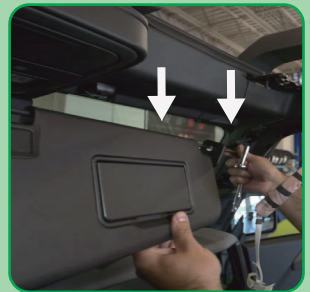
6. Remove and disconnect driver and passenger visors & visor clip.



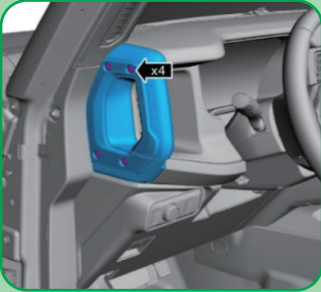
- 6.1 Position the sun visor screw cover aside.
- 6.2 Remove the sun visor screw
- 6.3 Release the sun visor from the roof.
- 6.4 If equipped. Disconnect the sun visor electrical connector.



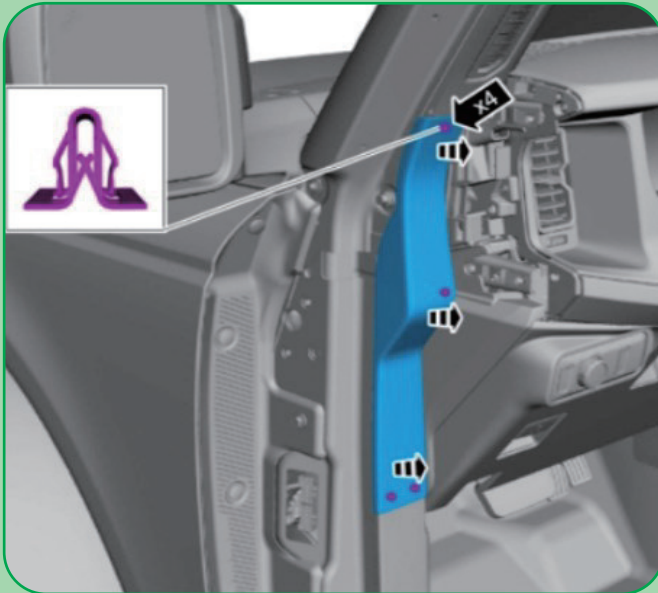
7mm socket



7. Remove trim starting with the handle on passenger and driver sides. By T30 Torx



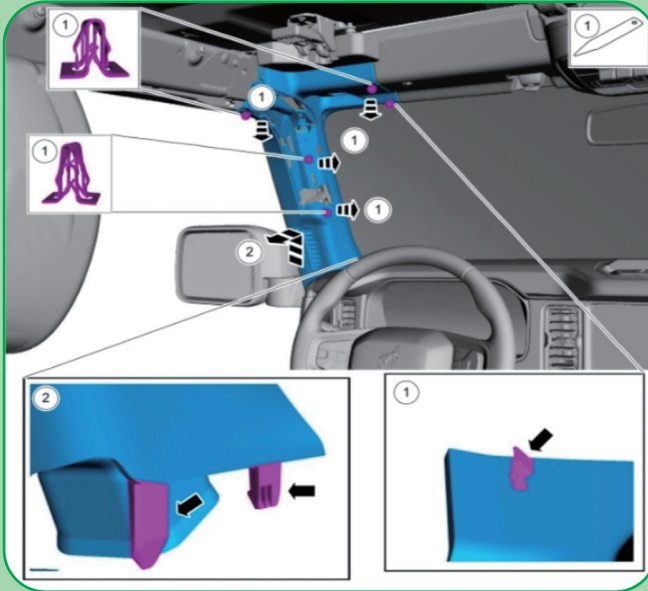
8. Remove driver and passenger trim panel below the handle. (2 sides, on passenger and driver side)



9. Remove the A-pillar trim panel.

9.1 Release the clips and the upper tab. Use the General Equipment: Interior Trim Remover

9.2 Lift upward and outward on the A-pillar trim panel and disconnect the upper tabs.



Windshield Header Trim Panel

10. Remove the sun visor clips T20 Trox

10.1 Open the sun visor clip screw cover.

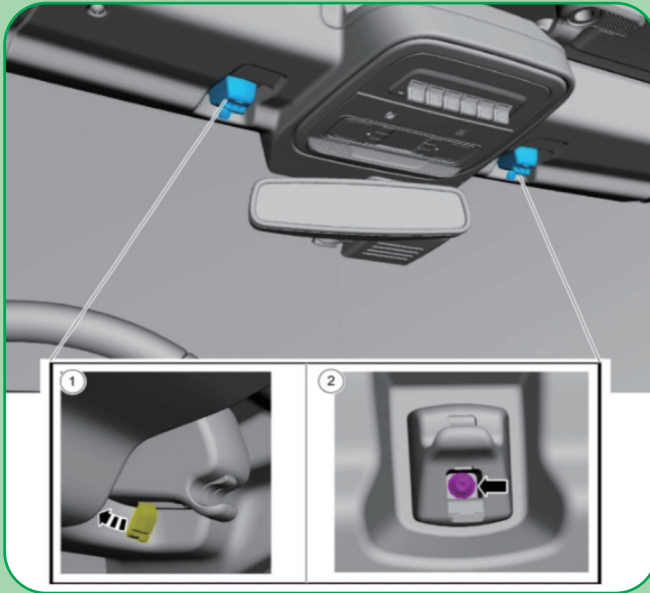
10.2 Remove the sun visor clip screw.



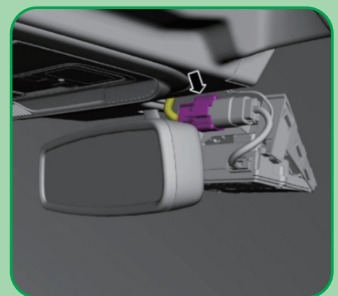
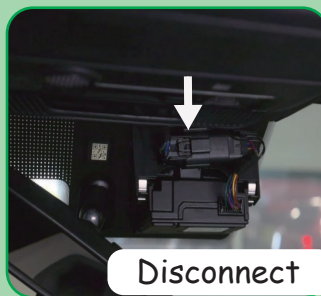
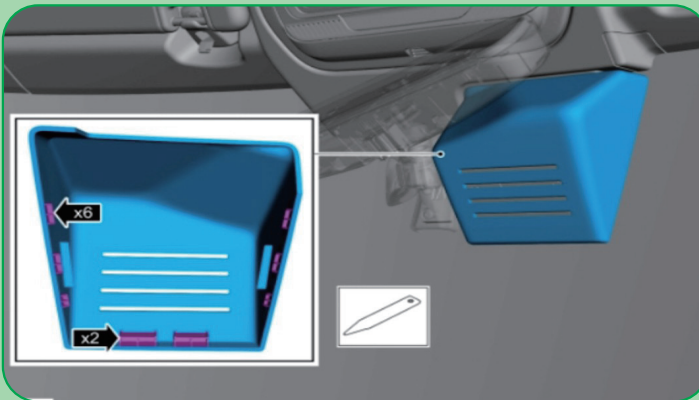
Right side



Left side



11. Disconnecting all connections to the mirror, dome assembly, microphone, etc.



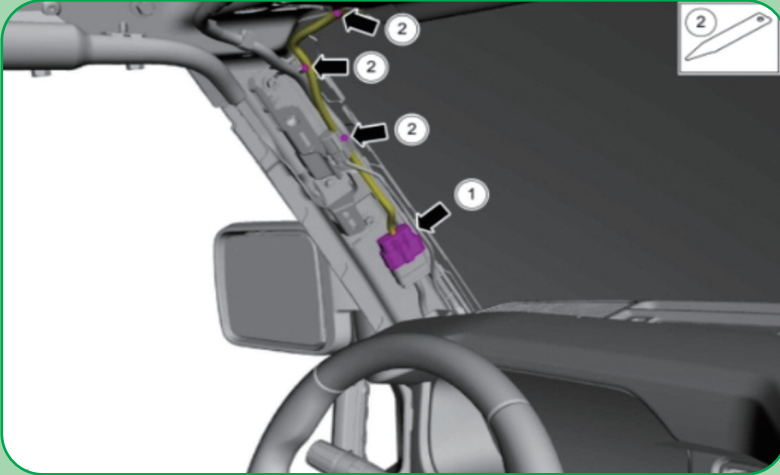
12. Disconnecting all connections to the mirror, dome assembly, microphone, etc.

On the LH side

Position the wiring harness aside.

12.1 Disconnect the wiring harness electrical connector.

12.2 Release the wiring harness retainers.

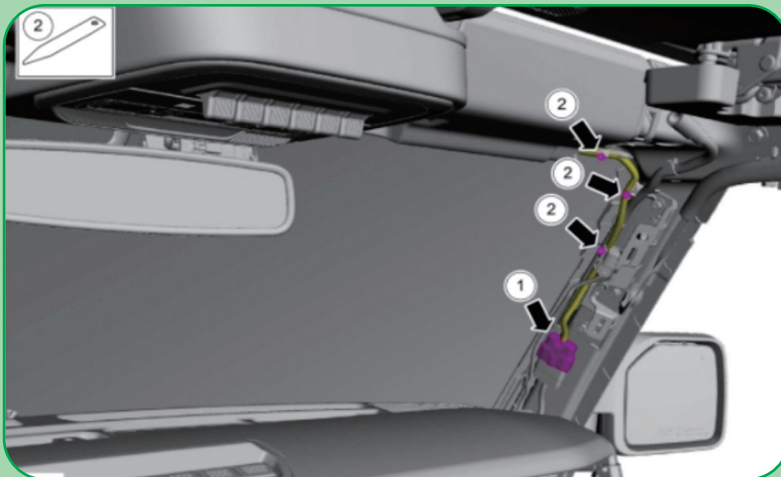


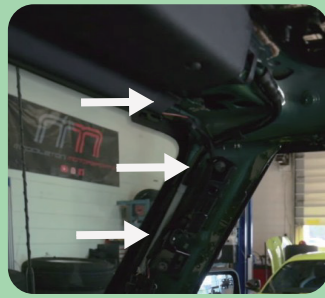
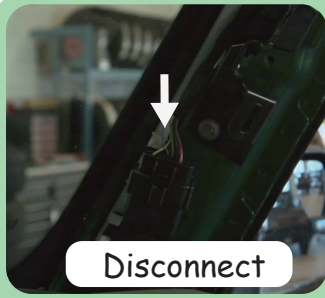
On the RH side

Position the wiring harness aside.

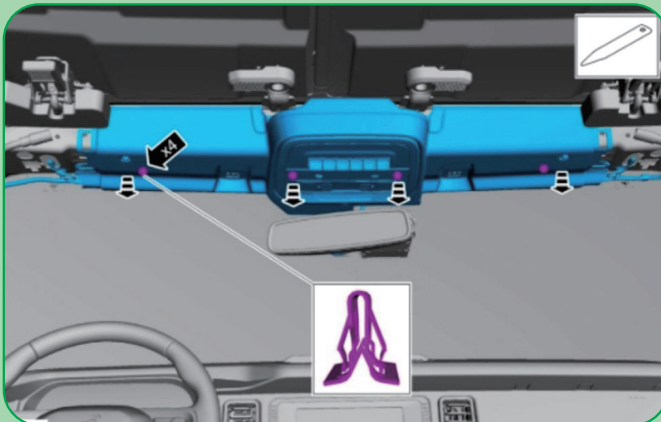
12.3 Disconnect the wiring harness electrical connector.

12.4 Release the wiring harness retainers.





13. Pull dome light assembly down carefully, release the clips and remove the windshield header trim panel.



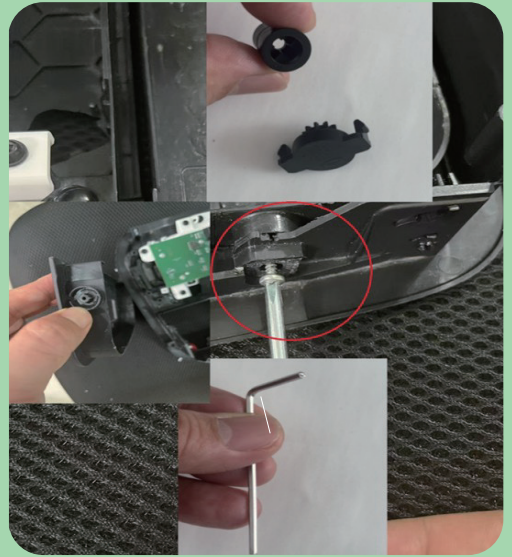
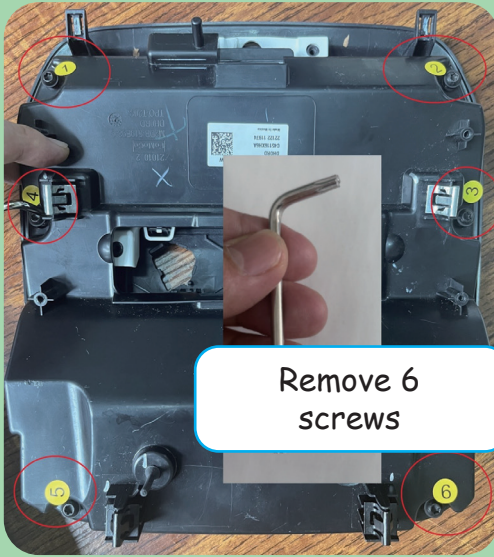


Overhead Console

14. Disconnecting microphone and screw off 6 screws.



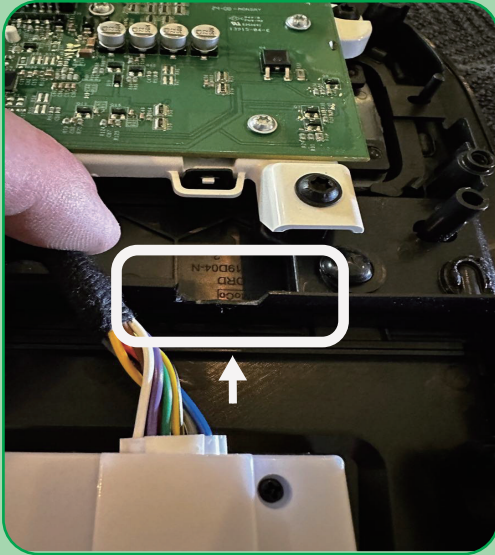
15. screw off 6 screws on dome light and take out the glasses holder.



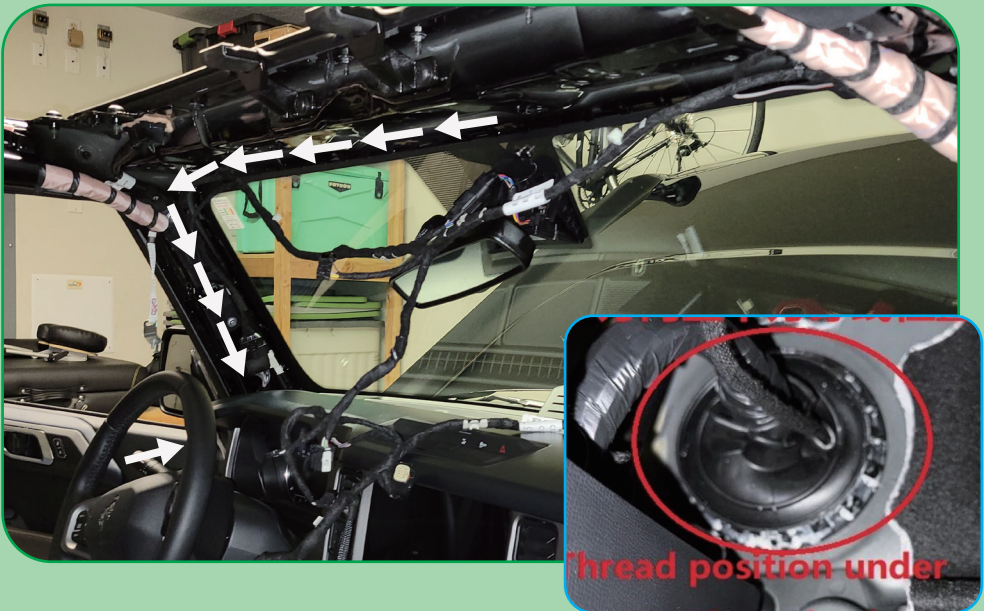
16. Fix our upfitter switches, retaining the microphone from the old dome assembly.



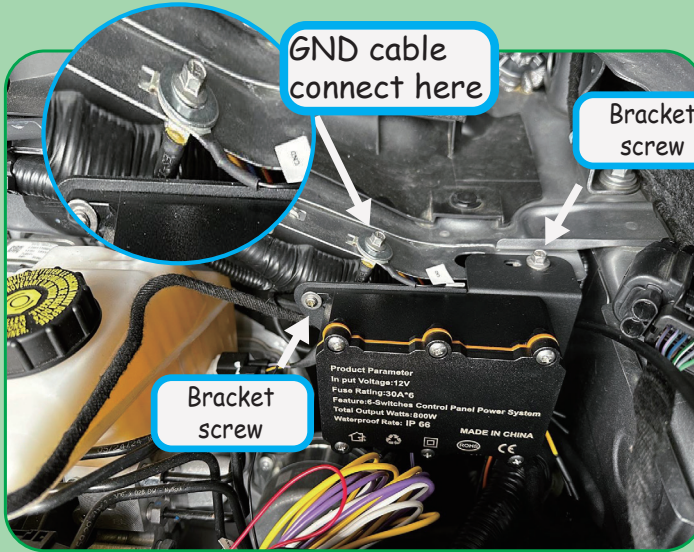
17. Please use extend cable (023-0255120053-0000) to connect, if you can't find good place to take cable out , cut a small place here. Then Fix back the backside frame screws, to reassemble the overhead console.



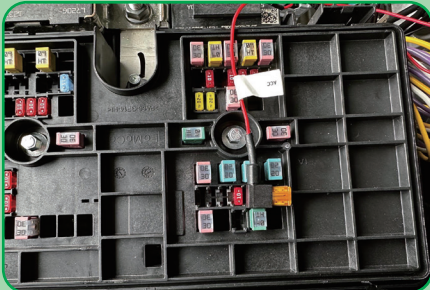
18. The extend cable (023-0255120053-0000) wire connect.



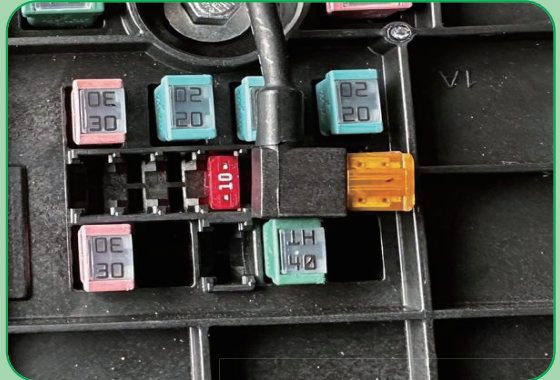
19. Please take cable (023-0255120053-0000) to engine compartment, and connect with relay box. Connect GND cable to metal. with ground.



20. Connect the Fuse cable from relay box to Body Control Module C (BCMC). Take out No. 139 micro2 fuse, insert into our connector port. Insert our cable into No.139 port.

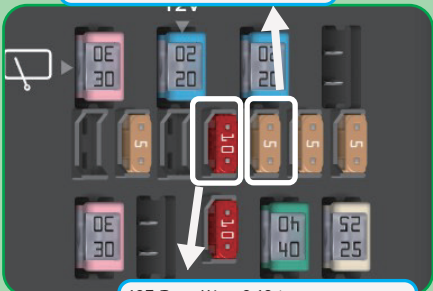


139 Fuse Micro2 5A
USB charge Port Overhead Console

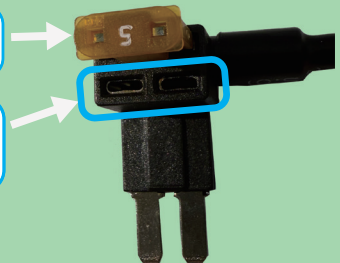


This fuse include with cable

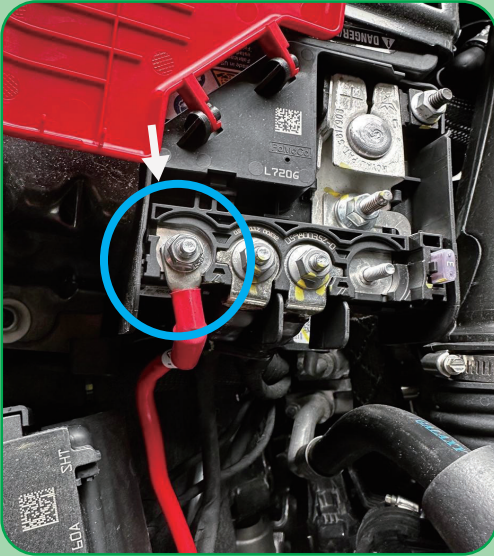
take out No.139 fuse to insert this port.



125 Fuse Micro2 10A
USB Smart charger, USB Charge Port



21. Connect Power cable from relay box to Battery.

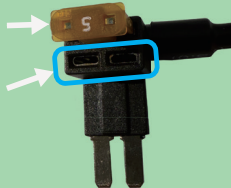


22. Use ILL cable to connect fuse box under steering. Take out No. 36 micro2 fuse, insert into our connector port. Insert our ILL cable into No.36 port.



This fuse include with cable

take out No.139 fuse to insert this port.



No.36 Fuse Micro2 15A Automatic high beam. Image processing module A.

23. Check your switches and aux wiring with a test light for functionality.

24. Reassemble, working steps 17 backward to 1.

25. Marvel at your work.

Powered Circuits

Switch Assignment	Wire color	Wire Size	Fuse Size
AUX 1	Yellow	2.8 mm ²	30A
AUX 2	Yellow	2.8 mm ²	30A
AUX 3	Purple	2.8 mm ²	30A
AUX 4	Purple	2.8 mm ²	30A
AUX 5	White	2.8 mm ²	30A
AUX 6	White	2.8 mm ²	30A

Some content may differ from your device depending on the region, service provider, or software version, and is subject to change without proor notice .

Copyright © 2025 HansPilot Electronics