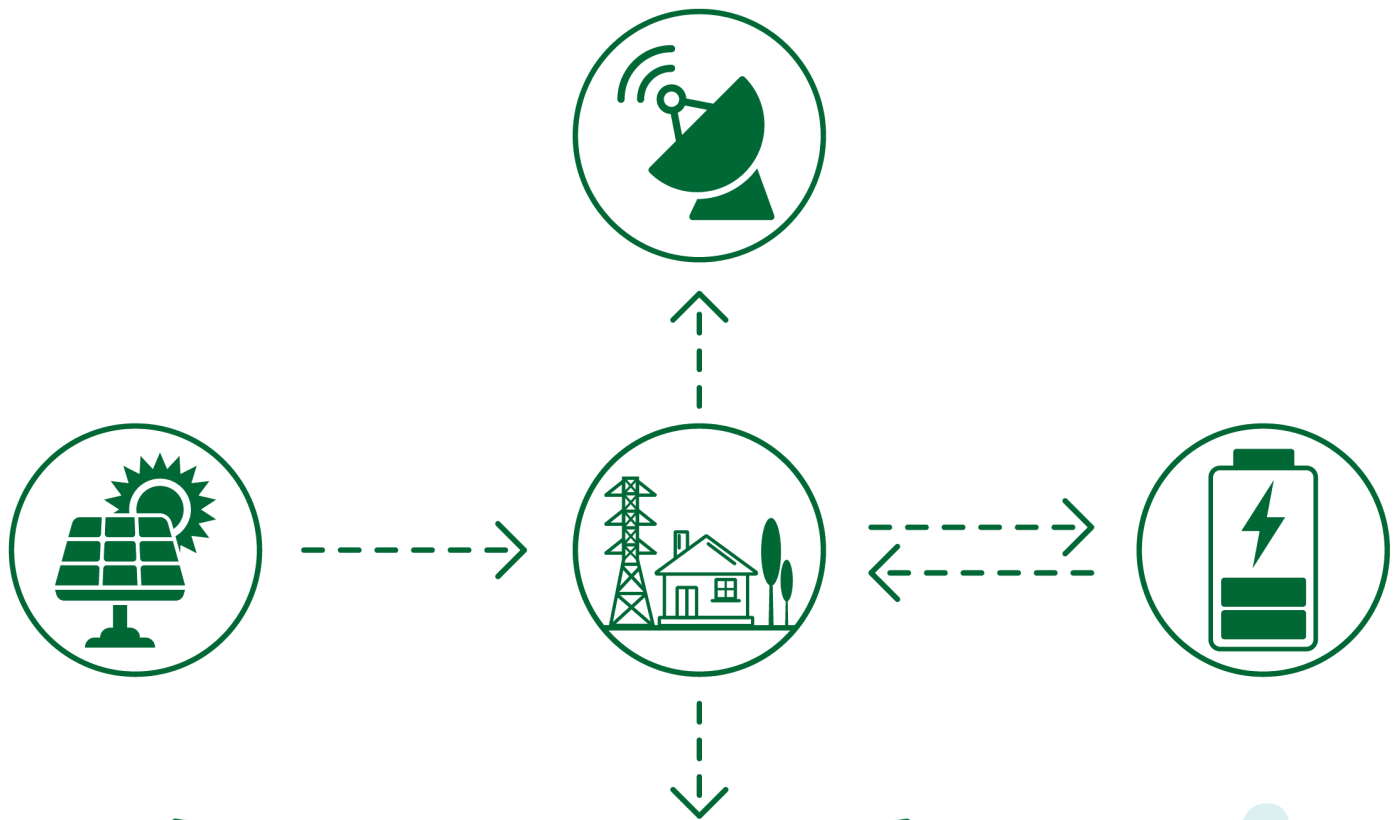


Product manual

Communication power & EV onboard power supplier



Company Profile

Mission & Vision

Focusing on the energy and communication industries, by applying power electronics technology, we aim to become a first-class tech-innovation enterprise that provides products, solutions, and services to the global market and creates continuous growing value for our customers, employees and society.

Shen Zhen Source Unit Technology Co., Ltd. (DSTB) was founded in 2011, focusing on power electronics related products such as new energy electric vehicle power supplies and communication power supplies. The company is a national high-tech enterprise that integrates research and development, manufacturing, sales, and services. In 2020, DSTB became a controlling subsidiary of the listed company Eaglerise (Stock Code: 002922). Currently, Eaglerise has factories or offices worldwide, located in the United States, Mexico, Malaysia, Japan, Spain, and other countries. It is close to customers, understands their needs, and introduces more practical and reliable products and advanced technology to them based on their needs. The company's employees are customer-centric, united and cooperate with each other, and achieve their own value by helping customers achieve continuous success.

Company Qualification



Product Catalog

Communication power supply

Product model	Input voltage	Output voltage	Output current	Efficiency	Power	Protection level	Heat dissipation	L*W*H(mm)
DSA1000-S54F	80~300 Vac	42~58V	20.8A	≥95.5	1KW	IP20	forced air cooling	217*72*40.8
DSA1800-S54F	80~300 Vac	42~58V	37.5A	>96%	1.8KW	IP20	forced air cooling	217*72*40.8
DSA3000-S54E	80~300 Vac	42~58V	56A	>96%	3KW	IP20	forced air cooling	281.3*105*40.8
DSA3000G-S54F	80~300 Vac	42~58V	62.5A	≥97.8%	3KW	IP20	forced air cooling	287.14*105*40.8
DSA4000-S54F	80~300 Vac	42~58V	75A	>96%	4KW	IP20	forced air cooling	281.3*105*40.8
DSA4000G-S54F	80~300 Vac	42~58V	80A	≥97.8%	4KW	IP20	forced air cooling	287.14*105*40.8
DSD4000-S54GF	70~150 Vdc	42~58V	75A	≥97.5%	4KW	IP20	forced air cooling	287.14*105*40.8
DSA2000-S26F	80~300 Vac	21~29V	77A	>96%	2KW	IP20	forced air cooling	281.3*105*40.8
DSA3000-S75F	80~300 Vac	60~87V	40A	>96%	3KW	IP20	forced air cooling	281.3*105*40.8
DSA3000-S110F	80~300 Vac	84~116V	27.3A	>96%	3KW	IP20	forced air cooling	281.3*105*40.8
DSA3000-S143F	80~300 Vac	112~155V	21A	>96%	3KW	IP20	forced air cooling	281.3*105*40.8
DSA3500-S63F	80~300 Vac	40~73V	60.8A	>96%	3.5KW	IP20	forced air cooling	281.3*105*40.8
DSA6000-S96F	205~456 Vac	40~120V	66.7A	≥95%	6KW	IP20	forced air cooling	386*176*85
DSA1000-S54A	90~280 Vac	54V	18.5A	≥95%	1KW	IP54	Natural cold	320*200*92
DSA1500-S54A	90~280 Vac	54V	28A	≥95%	1.5KW	IP54	Natural cold	320*200*92
DSA2000-S54E	80~300 Vac	54V	37A	>96%	2KW	IP54	Natural cold	320*200*92
DSA3000-S54C	90~280 Vac	43~58V	55.5A	≥96.5%	3KW	IP65	Natural cold	385*277*70
DSA6000-S54C	90~280 Vac	43~58V	111.1A	>97.5%	6KW	IP65	Natural cold	440*350*110
DSD5800-S48F	43~58 Vdc	43~58V	107.4A	>98%	5.8KW	IP20	forced air cooling	280.2*125*40.8

EV power supply

Product model	Input voltage	Output voltage	Output current	Efficiency	Power	Protection level	Heat dissipation	L*W*H(mm)
DSD600-S24	300~800 Vdc	24V±0.5V	0~25A	≥93%	DC/DC	IP67	Natural cold	249.5*126*60
DSD1200-MS14	200~450 Vdc	14±0.2V	86A	>94%	DC/DC	IP67	Natural cold	258*188*97
DSD1200-MS24	200~750 Vdc	26V	46A	>96%	DC/DC	IP67	Natural cold	271.1*188*97
DSD1500-MS27	200~750 Vdc	27.5V	55A	>96%	DC/DC	IP67	Natural cold	271.1*188*97
DSD2000-LS14-LV	200~450 Vdc	14V	170A	>96%	DC/DC	IP20	water-cool	200*120*55
DSD2000-LS14-HV	300~750 Vdc	14V	170A	>96%	DC/DC	IP20	water-cool	200*120*55
DSD2000-LS27A	300~750 Vdc	27.5V	73A	>96%	DC/DC	IP20	water-cool	200*120*55
DSD3000-LS27A	300~750 Vdc	27.5V	125A	>96%	DC/DC	IP20	water-cool	200*120*55
DSD5000-JS27LA	400~750 Vdc	27.5V	180A	>95%	DC/DC	IP20	water-cool	276*160*55
DSD6000-LS27B	300~750 Vdc	27.5V	220A	>95%	DC/DC	IP20	water-cool	285.8*159*55.5
DSD3000-S27I	200~880 Vdc	27.5V	125A	>96%	DC/DC	IP67	Natural cold	273*200*103
DSD3000-S48	200~880 Vdc	52V	58A	>95%	DC/DC	IP67	forced air cooling	273*200*103
DSA6600-S500B	90~265 Vac	250~470V	21A	>94%	AC/DC	IP20	water-cool	288*200*63
DSA6600-S700	90~265 Vac	400~700V	13A	>94%	AC/DC	IP20	water-cool	288*200*63
ODP3000 (OBC+DCDC+PDU)	90~265 Vac	250-450V	10A	>95.5%	AC/DC	IP67	water-cool	294*244*169
	200~450 Vdc	13.8	130A	>94.5%	DC/DC	IP67	water-cool	

DSA3000-S54E

Communication power supply



Technical indicators

1. Input voltage:	80~300Vac
2. Output voltage:	42~58Vdc
3. Output current(max):	62.5A
4. Rated power:	3KW
5. Maximum power:	3KW
6. Maximum efficiency:	96%
7. Protection level:	IP20(forced air cooling)
8. Communication interface:	Can2.0

L*W*H (mm)

287*105*40.8mm

Machine weigh

1.75KG

DSA3000G-S54F

Communication power supply



Technical indicators

1. Input voltage:	80~300Vac
2. Output voltage:	42~58Vdc
3. Output current(max):	62.5A
4. Rated power:	3KW
5. Maximum power:	3.15KW
6. Maximum efficiency:	≥97.8%
7. Protection level:	IP20
8. Communication interface:	Can2.0

L*W*H (mm)

287.14*105.0*40.8mm

Machine weigh

2KG

DSA4000-S54F

Communication power supply



Technical indicators

1. Input voltage:	80~300Vac
2. Output voltage:	42~58Vdc
3. Output current(max):	75A
4. Rated power:	4KW
5. Maximum power:	4KW
6. Maximum efficiency:	96%
7. Protection level:	IP20(forced air cooling)
8. Communication interface:	Can2.0

L*W*H (mm)

287*105*40.8mm

Machine weigh

1.75KG

DSA4000G-S54F

Communication power supply



Technical indicators

1. Input voltage:	80~300Vac
2. Output voltage:	42~58Vdc
3. Output current(max):	80A
4. Rated power:	4KW
5. Maximum power:	4.35KW
6. Maximum efficiency:	≥97.8%
6. Protection level:	IP20(forced air cooling)
8. Communication interface:	Can2.0

L*W*H (mm)

287.14*105.0*40.8mm

Machine weigh

2KG

DSA6000-S96F

Communication power supply



Technical indicators

1. Input voltage:	205~456Vac
2. Output voltage:	40~120Vdc
3. Output current(max):	66.7A
4. Rated power:	6KW
5. Maximum power:	6KW
6. Maximum efficiency:	95%
7. Protection level:	IP20 (forced air cooling)
8. Communication interface:	Can2.0

L*W*H (mm)

386.1*176.4*85mm

Machine weigh

≤6Kg

DSD4000-S48GF

Communication power supply



Technical indicators

1. Input voltage:	70~150Vdc
2. Output voltage:	43~83Vdc
3. Output current(max):	80A
4. Rated power:	4KW
5. Maximum power:	4KW
6. Maximum efficiency:	97.5%
7. Protection level:	IP20(Air-cooled)
8. Communication interface:	Can2.0

L*W*H (mm)

287.14*105*40mm

Machine weigh

1.6KG

DSD5800-S54F

Communication power supply



Technical indicators

1. Input voltage:	43~58Vdc
2. Output voltage:	43~58Vdc (two-way)
3. Output current(max):	120A
4. Rated power:	5.8KW
5. Maximum power:	5.8KW
6. Maximum efficiency:	98%
7. Protection level:	IP20(forced air cooling)
8. Communication interface:	Can2.0

L*W*H (mm)

280.2*125*40.8mm

Machine weigh

2KG

DSA1000-S54

Communication power supply



Technical indicators

1. Input voltage:	90~280 Vac
2. Output voltage:	54 Vdc
3. Output current(max):	22.5A
4. Rated power:	1KW
5. Maximum power:	1KW
6. Maximum efficiency:	95%
7. Protection level:	IP54(Natural cooling)
8. Communication interface:	RS485

L*W*H (mm)

320*200*92mm

Machine weigh

3KG

DSA1500-S54E

Communication power supply



Technical indicators

1. Input voltage:	90~280Vac
2. Output voltage:	54Vdc
3. Output current(max):	32A
4. Rated power:	1.5KW
5. Maximum power:	1.5KW
6. Maximum efficiency:	96%
7. Protection level:	IP54(Natural cooling)
8. Communication interface:	RS485

L*W*H (mm)

320*200*90mm

Machine weigh

2.95KG

DSA3000-S54C

Communication power supply



Technical indicators

1. Input voltage:	90~280Vac
2. Output voltage:	43~58Vdc
3. Output current(max):	63A
4. Rated power:	3KW
5. Maximum power:	3KW
6. Maximum efficiency:	96.5%
7. Protection level:	IP65(Natural cooling)
8. Communication interface:	RS485

L*W*H (mm)

380*277*70mm

Machine weigh

7.9KG

DSA6000-S54C

Communication power supply



Technical indicators

1. Input voltage:	90~280Vac
2. Output voltage:	43~58Vdc
3. Output current(max):	125A
4. Rated power:	6KW
5. Maximum power:	6KW
6. Maximum efficiency:	97.5%
7. Protection level:	IP65 (Natural cold)
8. Communication interface:	Can&485

L*W*H (mm)

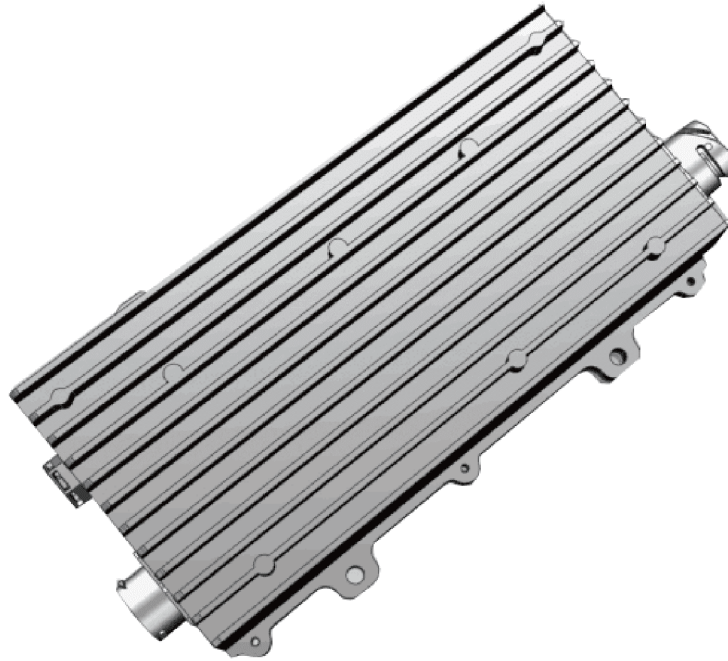
440*350*110mm

Machine weigh

15.8KG

DSD600-S24A

EV power supply



Technical indicators

1. Input voltage:	300~800Vdc
2. Output voltage:	24Vdc
3. Output current(max):	25A
4. Rated power:	600W
5. Maximum power:	600W
6. Maximum efficiency:	>93%
7. Protection level:	IP67(Natural cold)
8. Communication interface:	Can2.0

L*W*H (mm)

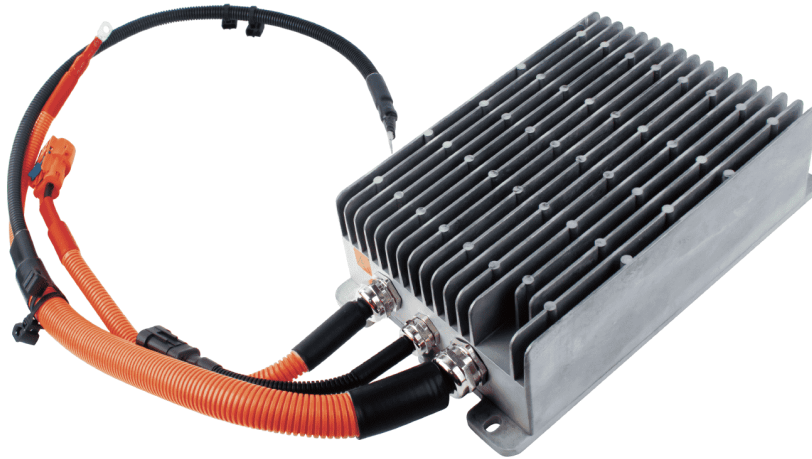
249.5*126*60mm

Machine weigh

1.5KG

DSD1000-S14-144

EV power supply



Technical indicators

1. Input voltage:	110~185Vdc
2. Output voltage:	14Vdc
3. Output current(max):	72A
4. Rated power:	1KW
5. Maximum power:	1.2KW
6. Maximum efficiency:	>92%
7. Protection level:	IP67(Natural cooling)
8. Communication interface:	Can2.0

L*W*H (mm)

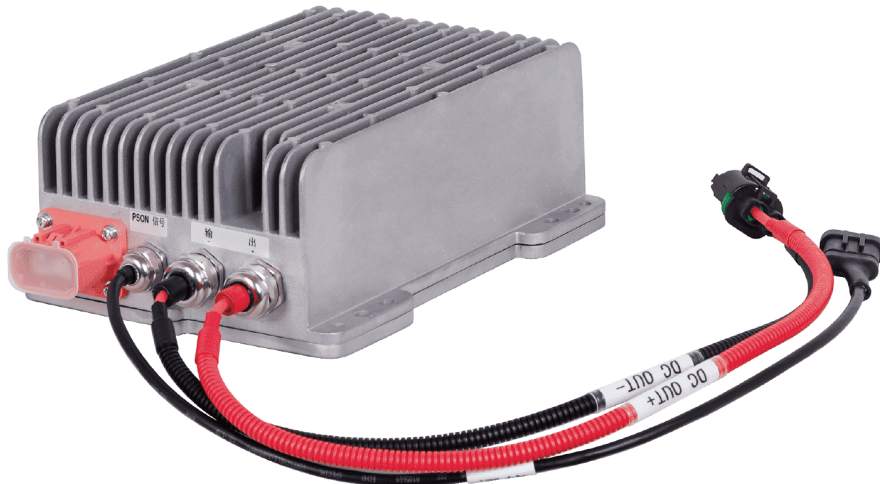
276*168*79mm

Machine weigh

3.8KG

DSD1200-MS24A

EV power supply



Technical indicators

1. Input voltage:	200~750Vdc
2. Output voltage:	26Vdc
3. Output current(max):	46A
4. Rated power:	1.2W
5. Maximum power:	1.2W
6. Maximum efficiency:	>96%
7. Protection level:	IP67(Natural cooling)
8. Communication interface:	Can2.0

L*W*H (mm)

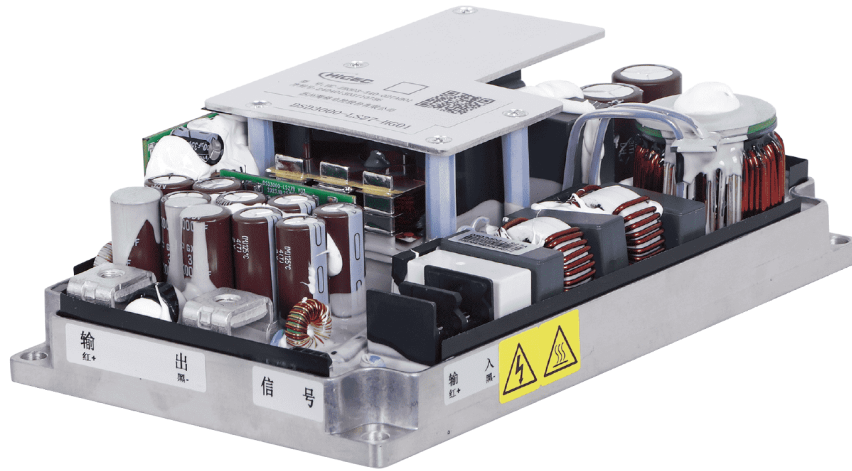
258.2*188*87mm

Machine weigh

4.85KG

DSD2000-LS14-LA01

EV power supply



Technical indicators

1. Input voltage:	200~450 Vdc
2. Output voltage:	14 Vdc
3. Output current(max):	170 A
4. Rated power:	2KW
5. Maximum power:	2.4KW
6. Maximum efficiency:	96%
7. Protection level:	IP20 (water-cool)
8. Communication interface:	Can2.0

L*W*H (mm)

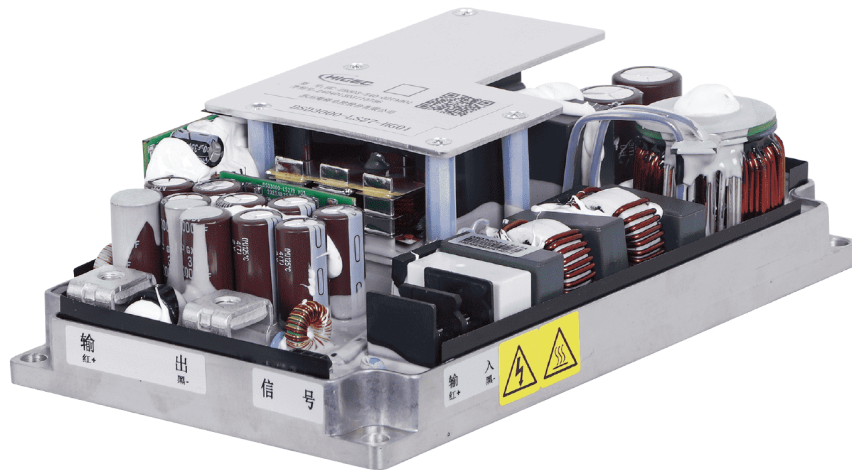
200*120*55 mm(MAX)

Machine weigh

1.9KG

DSD2000-LS14-HA01

EV power supply



Technical indicators

1. Input voltage:	300~750 Vdc
2. Output voltage:	14 Vdc
3. Output current(max):	170 A
4. Rated power:	2KW
5. Maximum power:	2.4KW
6. Maximum efficiency:	96%
7. Protection level:	IP20 (water-cool)
8. Communication interface:	Can2.0

L*W*H (mm)

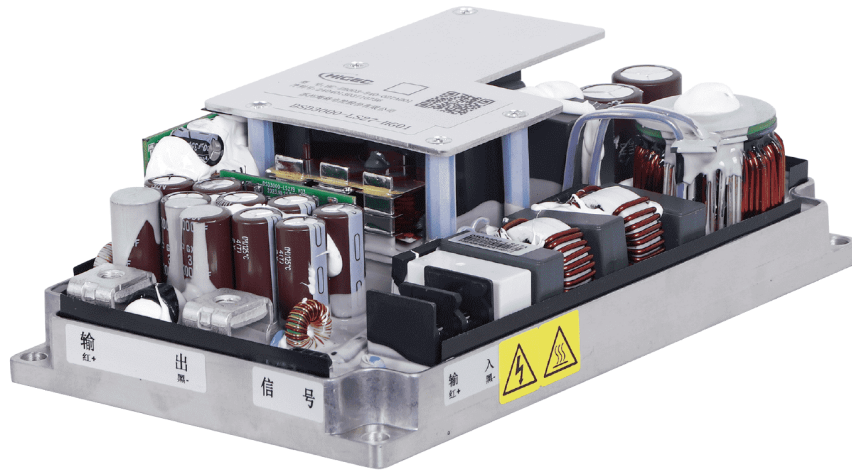
200*120*55 mm(MAX)

Machine weigh

1.9KG

DSD3000-LS27A

EV power supply



Technical indicators

1. Input voltage:	300~750 Vdc
2. Output voltage:	27.5Vdc
3. Output current(max):	125 A
4. Rated power:	3KW
5. Maximum power:	3.4KW
6. Maximum efficiency:	96%
7. Protection level:	IP20(water-cool)
8. Communication interface:	Can2.0

L*W*H (mm)

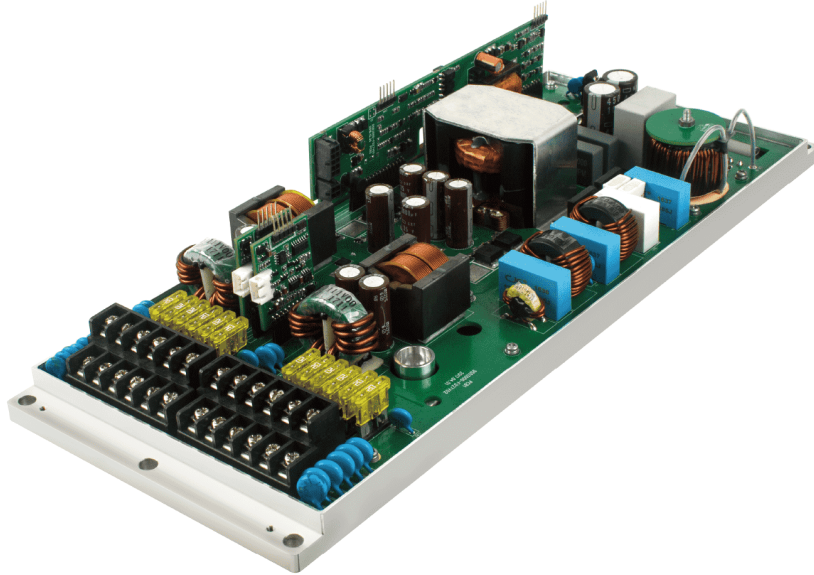
200*120*55 mm(MAX)

Machine weigh

1.9 KG

DSD3000-FD27D

EV power supply



Technical indicators

1. Input voltage:	200~820Vdc
2. Output voltage:	5~27.5Vdc(Dual output)
3. Output current(max):	50A+60A
4. Rated power:	3KW
5. Maximum power:	3KW
6. Maximum efficiency:	93%
7. Protection level:	IP20(Air-cooled)
8. Communication interface:	Can2.0

L*W*H (mm)

280*160*63.8mm

Machine weigh

3.35KG

DSD5000-JS27A

EV power supply



Technical indicators

1. Input voltage:	400~750 Vdc
2. Output voltage:	27.5Vdc
3. Output current(max):	180 A
4. Rated power:	5KW
5. Maximum power:	5KW
6. Maximum efficiency:	95%
7. Protection level:	IP20 (water-cool)
8. Communication interface:	Can2.0

L*W*H (mm)

276*160*55mm

Machine weigh

1.9KG

DSD6000-LS27B

EV power supply



Technical indicators

1. Input voltage:	200~750 Vdc
2. Output voltage:	27.5 Vdc
3. Output current(max):	220 A
4. Rated power:	6KW
5. Maximum power:	6KW
6. Maximum efficiency:	96%
7. Protection level:	IP20 (water-cool)
8. Communication interface:	Can2.0

L*W*H (mm)

285.8*159*55.5mm

Machine weigh

3.5 KG

DSD3000-S27I

EV power supply



Technical indicators

1. Input voltage:	200~880Vdc
2. Output voltage:	27.5Vdc
3. Output current(max):	110A
4. Rated power:	3KW
5. Maximum power:	3.2KW
6. Maximum efficiency:	96%
7. Protection level:	IP67(forced air cooling)
8. Communication interface:	Can2.0

L*W*H (mm)

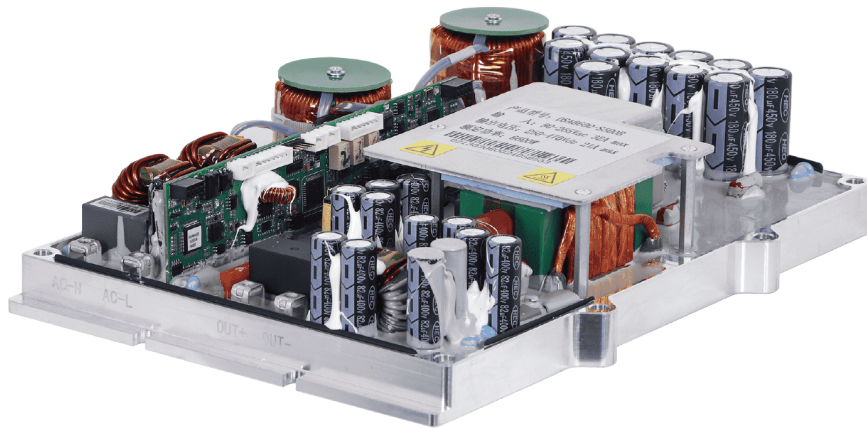
273*200*103mm

Machine weigh

5.6KG

DSA6600-S500B

EV power supply



Technical indicators

1. Input voltage:	90~265Vac
2. Output voltage:	250~470Vdc
3. Output current(max):	21A
4. Rated power:	6.6KW
5. Maximum power:	6.6KW
6. Maximum efficiency:	>94%
7. Protection level:	IP20(water-cool)
8. Communication interface:	Can2.0

L*W*H (mm)

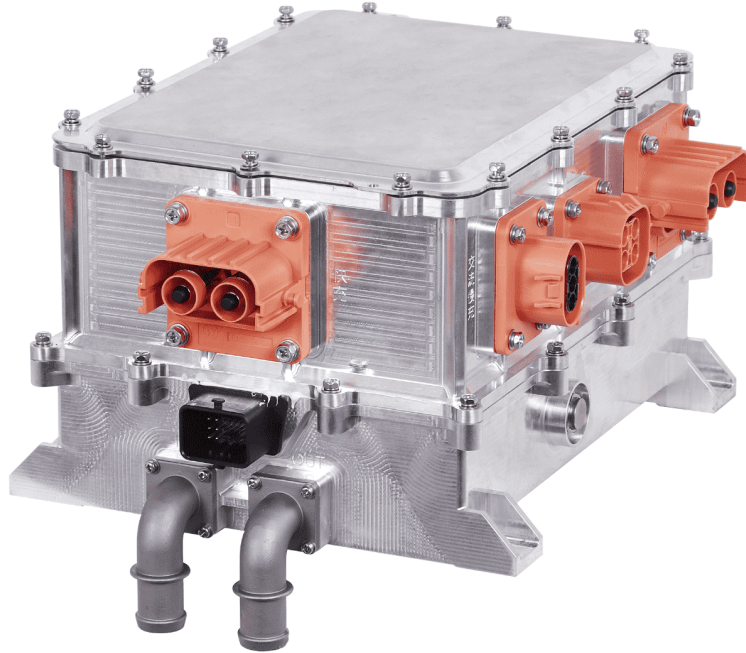
288*200*63mm

Machine weigh

5KG

ODP3000

EV power supply (PDU+OBC+DC/DC)



Technical indicators

OBC

1. Input voltage: 90~264 Vac
2. Output voltage: 250~450 Vdc
3. Output current(max): 10 A
4. Rated power: 3.3KW
5. Maximum power: 3.3KW
6. Maximum efficiency: 95.5%

DCDC

1. Input voltage: 200~450 Vdc
2. Output voltage: 13.8Vdc
3. Output current(max): 130 A
4. Rated power: 1.5KW
5. Maximum power: 1.8KW
6. Maximum efficiency: 94.5%

- 1、 Protection level: IP67(water-cool)
- 2、 Communication interface: Can2.0

L*W*H (mm)

294*244*169mm

Machine weigh

10KG



Shen Zhen Source Unit Technology CO., LTD

Address: Building 7, Tianhao Industrial Zone, Shiyan Street, Bao'an District, Shenzhen City,
Guangdong Province, China

Tele: +86-13602649992

Email: liudayong@szdstb.com

Website: www.szdstb.com