

WATER-COOLED CONDENSING UNIT (PRO)

R290 Water-Cooled Condensing Unit Efficient. Quiet. Eco-Friendly.

RIGID R290 water-cooled condensing unit is a compact, energy-efficient solution for both positive and negative temperature applications. It replaces traditional compressor racks with a water-loop system that removes heat via a rooftop dry cooler, reducing refrigerant use and simplifying installation. Featuring a DC inverter compressor, electronic expansion valve, and intelligent controls, it ensures quiet operation, precise temperature control, and excellent energy savings. Ideal for use with multidecks, serve-over counters, freezer units, semi-vertical cabinets, and cold rooms, it's a smart choice for modern refrigeration needs.



>WATER-LOOP SYSTEM ADVANTAGES

01. Energy Efficiency

Inverter compressor combined with water-cooled condenser, less power, higher cooling

02. Simplified Installation

Water loop design makes system setup faster and easier compared to traditional refrigerant piping systems.

03. Flexible Layout

Changing store layouts is simple - just disconnect and reconnect water lines without complex refrigerant work.

04. Space Optimization

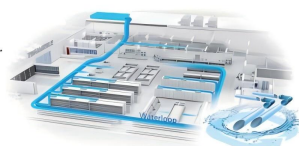
No need for a central machine room, which frees up valuable retail floor space.

05. Cost-Efficient Relocation

High return on investment - easily relocated with minimal infrastructure changes.

06. Reduced Gas Leakage

Lower refrigerant charge and system isolation greatly reduce the risk of leaks.



>KEY BENEFITS

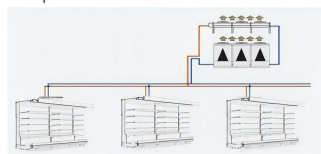
01. Stable Product Temperature - Ensures consistent cooling for superior food preservation.

02. Lower Energy Consumption - Inverter technology and water cooling reduce operational costs.

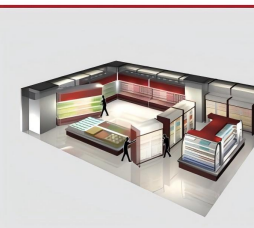
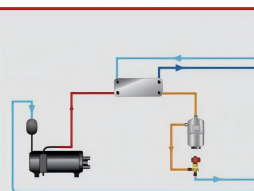
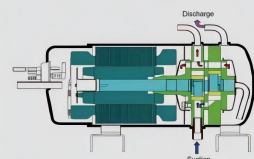
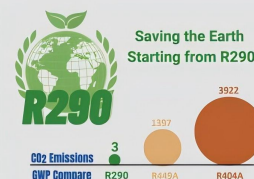
03. Enhanced Reliability - Factory-assembled units ensure consistent quality and dependable performance.

04. Minimized Downtime - System design limits potential damage in the event of failure.

05. All-Climate Compatibility - Easily adapts to varying environmental conditions around the world.



>FEATURES



ENVIRONMENTAL FRIENDLY

The models of the R290 range water cooled condensing unit characterized by climate-friendly and less refrigerant charge.

01. R290 Refrigerant.
02. Overall charge reduction-80%.
03. No more long refrigerant pipes.
04. Only small and compact refrigerant systems.
05. Overall leaks reduction-85%.
06. Limited charge on units.

HIGH RELIABILITY

Pursuing longer life and high reliability, the compressor we used is famous brand Sanyo refrigeration compressor.

01. Sanyo compressor with reputation for outstanding reliability.
02. Water-cooled condenser increase compressor efficiency.
03. Simple installation, no maintenance, no welding needed.

ENERGY EFFICIENCY

Guarantees the best operating conditions for each independent unit, up to 25% energy savings in comparison to other systems.

01. Sanyo compressor with intelligent inverter and controller.
02. Individual control of suction and discharge pressure.
03. Wide modulation range brings low pressure difference.
04. Reduced compressor cycling.

FLEXIBILITY

The self-contained water-cooled condensing unit offers maximum flexibility in in terms of moving or modification.

01. Smart layout, cabinet is easily moved everywhere.
02. Flexible sales area. Easy installation or de-installation.
03. Critical components fully contained within cabinet.
04. No plant room required.

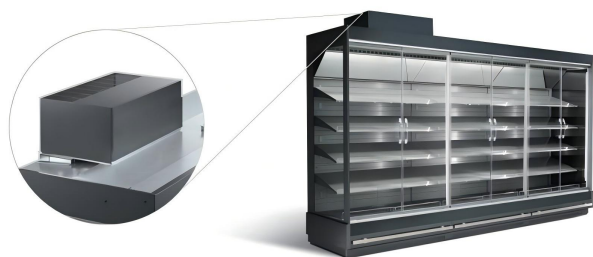
INVERTER WATER COOLED CONDENSING UNIT(LOW PROFILE)

R448A R449A R404A

MEDIUM-LOW TEMPERATURE
SINGLE PHASE 220V/50HZ OR 220V/60HZ



Model		RG-BHSN10EL-SL	RG-BHSN20FL-SL	RG-BHSN30EL-SL
Horsepower (HP)		1 HP	2 HP	3 HP
Power supply		Single phase 220V/50Hz or 220V/60Hz		
Evap. temp. range (°C)		-40~-5°C		
Ambient temperature (°C)		-7~43°C		
Compressor model		C-7RHVN63L0B	C-7RHVN113L0B	C-7RHVN153L0B
Refrigerant		R404A, R448A, R449A		
Speed range		30~80Hz		
Max run current (A)		4	9	13
Water pipe	Water inlet OD	3/4" External Thread		
	Water outlet OD	3/4" External Thread		
Refrigerant pipe	Gas inlet OD	Φ12.7 (1/2")		
	Liquid outlet OD	Φ9.52 (3/8")		
Our dimension L*W*H (mm)		850*425*385		
Installation pitch of holes		Φ8-830*365		
Refrigeration capacity	Evap. temp.(°C)	Refrigeration capacity: W Ambient temp.:32°C Speed:80Hz		
	-40°C	920	1380	1670
	-35°C	1150	1750	2140
	-30°C	1420	2080	2715
	-25°C	1550	2550	3420
	-20°C	1780	3000	4070
	-15°C	2150	3400	4680
	-10°C	2850	4050	5700
	-5°C	3015	4860	6680



NON-INVERTER WATER COOLED CONDENSING UNIT(LOW PROFILE)

R448A R449A R404A

MEDIUM-LOW TEMPERATURE
SINGLE PHASE 220V/50HZ



Model		RG-HSN10EL-SL	RG-HSN15EL-SL	RG-HSN20EL-SL	RG-HSN25EL-SL	RG-HSN30EL-SL
Horsepower (HP)		1 HP	1.5 HP	2 HP	2.5 HP	3 HP
Power supply		220V/50Hz				
Evap. temp. range (°C)		-40~-5°C				
Ambient temp. (°C)		-7~43°C				
Refrigerant max.(KG)		R404A(1.2)	R404A(1.4)	R404A(3.0)	R404A(3.0)	R404A(3.0)
Start-up current (A)		27	37	50	53	60
Max. running current (A)		4	5	8	9	12
Pressure controller		High & Low pressure switch				
Water pipe	Inlet OD	3/4" External Thread				
	Outlet OD	3/4" External Thread				
Refrigerant pipe	Inlet OD	12.7 (1/2")				
	Outlet OD	9.52 (3/8")				
External dimension	Length(mm)	850	850	850	850	850
	Width(mm)	425	425	425	425	425
	Height(mm)	340	340	340	340	340
Installation pitch of holes		Φ8-830*365				
Refrigeration capacity	Evap. Temp.(°C)	Refrigeration capacity: W Ambient temp.:32°C				
	-40°C	635	840	1260	1405	1620
	-35°C	825	1090	1580	1760	2080
	-30°C	955	1190	1890	2110	2630
	-25°C	1210	1545	2310	2575	3320
	-20°C	1440	1865	2730	3040	3955
	-15°C	1710	2100	3095	3450	4540
	-10°C	2070	2426	3680	4100	5485
-5°C	2370	2790	4100	4570	6485	
Wiring capacity	Leakage protector	Rated current (A)	10	15	25	30
		Leak current (mA)	30	30	30	30
	Diameter (mm²)	In 10m	2.0	2.0	4.0	4.0
		In 20m	2.0	3.5	6.0	6.0
		In 30m	3.5	3.5	6.0	6.0

Note: Single phase 220V/60Hz water cooled condensing units are available.