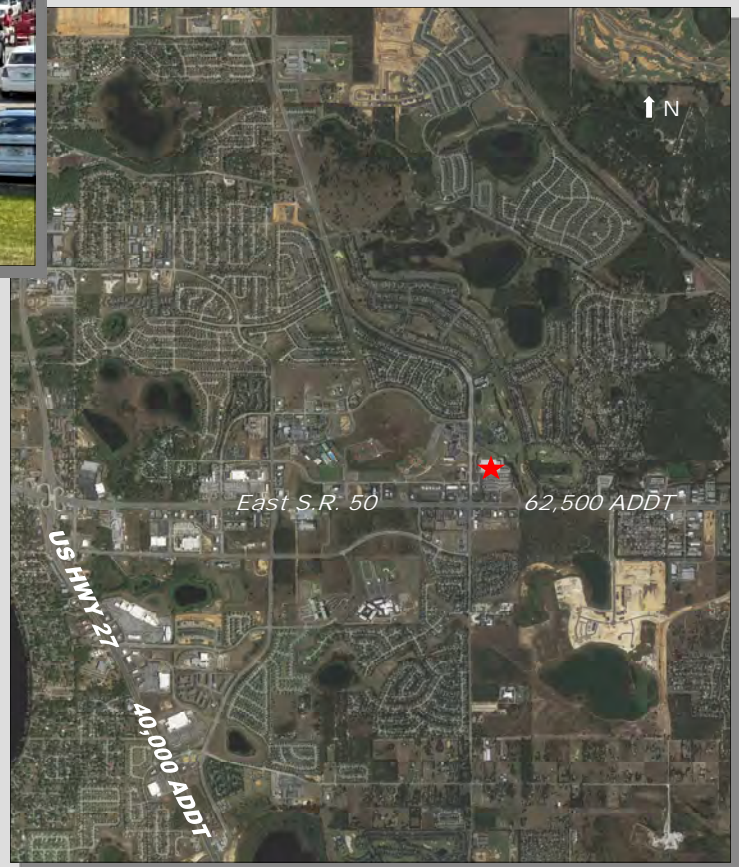


# 1,400sf & 2,800sf Available ~ Shops at Hancock



## TARGET Anchored Center



### Property Features:

Year Built: 2003  
Construction: Concrete / Split-Face Block  
Roof Cover: Built-up over Metal Deck

### Available Space:

Units E & F 2,800sf - 40' x 70'  
(Former Payless Shoe Source)  
Unit G 1,400sf - 20' x 70'  
(Former GameStop)

### Retail Rental Rates:

Base Rent: \$25.00 per sf  
Additional Rent (NNN) Estimated at \$6.50 per sf

Note: All rents subject to Sales Tax

[www.RetailAssetManagementInc.com](http://www.RetailAssetManagementInc.com)

## SHOPS at HANCOCK

192,735sf Power Center

14,000sf Shadow Retail Center  
Adjacent to Target Supercenter

2670 East State Road 50, Clermont, Florida 34711

For Additional Information Contact

**Retail Asset Management, Inc.**

Sales • Management • Leasing • Development

Paul Cooley (727) 480-0063 ~ Wayne Purdy (727) 510-3707

pcooley@RetailAssetManagementInc.com ~ wpurdy@RetailAssetManagementInc.com

Ofc (727) 446-3032 ~ Fax (727) 446-3080

P.O. Box 5666 • Clearwater • Florida 33758-5666

The information given herewith is obtain from sources considered reliable. However we are not responsible for misstatements of facts, errors or omissions, withdrawal from market, modification of terms and conditions, or change in pricing without notice. The information supplied herein is for informational purposes only and shall not constitute a warranty or assurance that the information is correct. Any person intending to rely upon the information supplied herein should verify said information independently.

Pursuant to Section 475.25(1)(q) Florida Statutes, and Rule 21V-10.033 Florida Administrative Code, Retail Asset Management, Inc. makes the following disclosures, that in the event a lease or sales contract is entered into, Retail Asset Management, Inc. represents the Lessor/Seller exclusively and Lessee/Buyer may be responsible for additional costs, such as their own attorney's fees, security deposit, and telephone and utility deposits.