

# A New Leap in **GigaTera** Sports Lighting

Brighter, Thinner, and Lighter with PTX™ Technology



**SUFA-PTX** (SFP Series)



**MAHA-PTX** (MHP Series)

20250109  
REVISION : 1.0.9

GigaTera®  
beyond light

Plate Thermal eXchanger

# PTX™ thermal dissipation technology

PTX™ thermal dissipation technology provides unparalleled **heat dissipation performance** through excellent thermal conductivity. (above 3,000W/mK)



KMW Inc **PTX™** Heat Dissipation Technology Patent Number:10-2024-01105056

This invention relates to an **active heat dissipation mechanism** that can improve heat dissipation performance by transferring heat generated from a heat-generating device (such as an electronic device) through a phase change in the refrigerant.

## Effect

- ① Maximized heat dissipation performance through refrigerant phase-change technology
- ② Powerful heat transfer capability

**"SUFA-PTX Series, Patent under process"**

# New Lineup description

- ① **Uncompared Lightweight and Compact Design**  
Easy to install and maintain, minimizing carbon emissions.
- ② **Aerodynamic Structure**  
Enhances safety by reducing wind resistance.
- ③ **Round-Type Bracket Design**  
Simplifies fixture mounting and aiming for convenient installation.
- ④ **Inner visor Technology**  
Precisely directs light to target areas, minimizing light spill and waste.  
Minimizes glare and light leakage (Up to 30% comparing previous models)
- ⑤ **Simple Tilt and Rotate System**  
Ensures quick and accurate aiming adjustments.
- ⑥ **Dual-Module Design (SFP1K5 model)**  
Enhances uniformity while significantly reducing glare.
- ⑦ **Adaptable installation options for site conditions.**  
Choose between integrated or remote types to suit site requirements.
- ⑧ **Innovative Thermal Management**  
Extends product lifespan through advanced heat dissipation technology.
- ⑨ **Remote Aiming Control (RTS Option - Available from 2025 Q1)**  
Quicker and easier remote lighting control.

## **NOTICE!!**

: The SFP Series (Remote, Rear Mount) and MHP series is now available for order.

: The following product will be discontinued starting Q2 2025.

- SFX600, SFA800, SFA1K2, SFA1K6

- MAH600, MAH800, MAH1K0, MAH1K2, MAH1K6

---

# Field Lumen Value

## Field Lumen

The field lumen value represents the total amount of light evenly distributed across the entire playing field and it is a metric used to evaluate the amount of light and how evenly it spreads.

## Multi-Layered Inner Visor Design & Light Distribution Type

Even with high luminous efficiency, improper light direction can result in uneven light distribution, causing visual discomfort and light spillage.

GigaTera's products developed advanced multi-layered Inner visor with symmetrical and asymmetrical beam angle options.

These innovations ensure light reaches its target accurately, offering uniform lighting quality for both players and spectators.

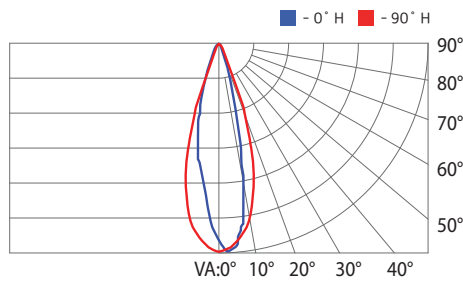
## Advantages :

- ① Symmetrical or asymmetrical lighting options maximize light uniformity.
- ② Minimizing glare for players and spectators by focusing light only on the necessary areas.
- ③ Reduces unnecessary light spillage, optimizing energy usage.
- ④ Custom light distribution tailored to sports like soccer, baseball, and tennis.

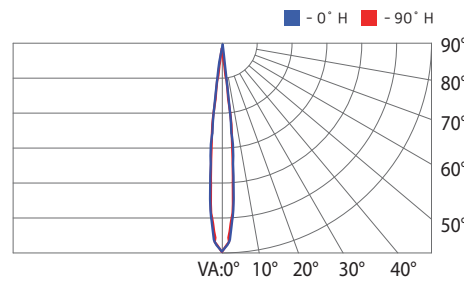
**With diverse light distribution types, GigaTera enables customized lighting placements across different areas of the field. By directing light precisely where needed, it ensures even brightness throughout the field, enhancing the overall visibility experience.**

# Light Distribution Type

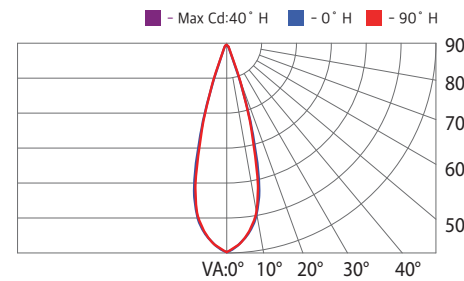
## SUFA-PTX Series



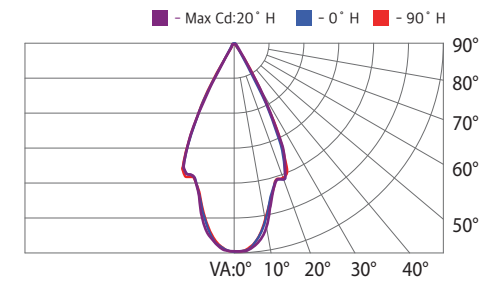
Asymmetric 30°



Symmetric 15°

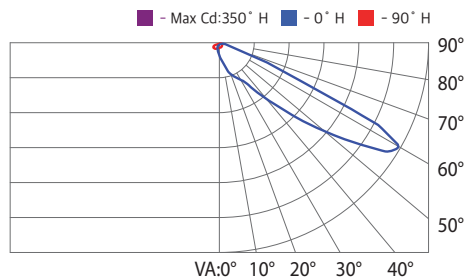


Symmetric 30°



Symmetric 45°

## MAHA-PTX Series



Asymmetric

# SFP Series Comparison

**SFX600**

Built-in Driver



• The product will be discontinued starting Q2 2025.



**SFP600**

Rear Mount Driver

600W (Adjusted output from 800W)

• The certification shown at the top is part of an ongoing project.

5000K / 70 Ra	<b>Color Temp. and CRI</b>	<b>5000K / 70 Ra</b>
81,000 lm	<b>Luminous Flux</b>	<b>81,600 lm</b>
135 lm/W	<b>Luminous Efficacy</b>	<b>136 lm/W</b>
15° (Symmetry) / 30° (Symmetric, Asymmetric Wide) / 45° (Symmetry)	<b>Light distribution</b>	<b>15° (Symmetric) / 30° (Asymmetric   Symmetric) / 45° (Symmetric)</b>
200 ~ 240VAC / 277 ~ 480VAC	<b>Input Voltage</b>	<b>200 ~ 480VAC</b>
323.0 x 393.0 x 409.0(mm)	<b>Size</b>	<b>348.6 x 496.8 x 303.0(mm)</b>
17.0kg (Driver Include)	<b>Weight</b>	<b>14.0kg (Bracket / Driver Include)</b>
Front 0.12m <sup>2</sup> / Side 0.1m <sup>2</sup>	<b>EPA</b>	<b>Front 0.11m<sup>2</sup> / Side 0.07m<sup>2</sup></b>
IP66	<b>IP Rating</b>	<b>IP66</b>

• Tolerance ±5%

**SFA800**

Remote Driver



• The product will be discontinued starting Q2 2025.



**SFP800**

Remote Driver

• The certification shown at the top is part of an ongoing project.

5000K / 70 Ra	<b>Color Temp. and CRI</b>	<b>5000K / 70 Ra</b>
108,000 lm	<b>Luminous Flux</b>	<b>104,800 lm</b>
135 lm/W	<b>Luminous Efficacy</b>	<b>131 lm/W</b>
15° (Symmetry) / 30° (Symmetric, Asymmetric Wide) / 45° (Symmetry)	<b>Light distribution</b>	<b>15° (Symmetric) / 30° (Asymmetric   Symmetric) / 45° (Symmetric)</b>
100 ~ 277VAC / 240 ~ 277VAC	<b>Input Voltage</b>	<b>200 ~ 480VAC</b>
466.5 x 354.0 x 319.0(mm)	<b>Size</b>	<b>348.6 x 496.8 x 249.3(mm)</b>
13.0kg (Driver Exclude)	<b>Weight</b>	<b>8.8kg (Bracket Include)</b>
Front 0.141m <sup>2</sup> / Side 0.082m <sup>2</sup>	<b>EPA</b>	<b>Front 0.11m<sup>2</sup> / Side 0.07m<sup>2</sup></b>
IP66	<b>IP Rating</b>	<b>IP66</b>

• The specifications listed above are subject to change without notice to improve product performance.

• Tolerance ±5%

# SFP Series Comparison

## SFA1K2

Remote Driver



• The product will be discontinued starting Q2 2025.

5000K / 70 Ra (600W x 2EA)	<b>Color Temp. and CRI</b>	<b>5000K / 70 Ra</b>
162,000 lm	<b>Luminous Flux</b>	<b>157,200 lm</b>
135 lm/W	<b>Luminous Efficacy</b>	<b>131 lm/W</b>
15° (Symmetric) / 30° (Asymmetric Wide, Symmetric) / 45° (Symmetric)	<b>Light distribution</b>	<b>15° (Symmetric) / 30° (Asymmetric   Symmetric) / 45° (Symmetric)</b>
200 ~ 240VAC / 277 ~ 480VAC	<b>Input Voltage</b>	<b>200 ~ 480VAC</b>
760.0 x 252.0 x 323.0(mm)	<b>Size</b>	<b>491.0 x 496.8 x 264.8(mm)</b>
15.0kg (Driver Exclude)	<b>Weight</b>	<b>12.3kg (Bracket Include / Driver Exclude)</b>
Front 0.216m² / Side 0.075m²	<b>EPA</b>	<b>Front:0.16m² / Side 0.07m²</b>
IP66	<b>IP Rating</b>	<b>IP66</b>

• Tolerance ±5%



## SFPIK2

Remote Driver

1,200W (Adjusted output from 1,500W module)

• The certification shown at the top is part of an ongoing project

## SFA1K6

Remote Driver



• The product will be discontinued starting Q2 2025.

5000K / 70 Ra (800W x 2EA)	<b>Color Temp. and CRI</b>	<b>5000K / 70 Ra</b>
216,000 lm	<b>Luminous Flux</b>	<b>184,500 lm</b>
135 lm/W	<b>Luminous Efficacy</b>	<b>123 lm/W</b>
15° (Symmetric) / 30° (Asymmetric Wide   Symmetric) / 45° (Symmetric)	<b>Light distribution</b>	<b>15° (Symmetric) / 30° (Asymmetric   Symmetric) / 45° (Symmetric)</b>
220 ~ 240VAC / 277 ~ 480VAC	<b>Input Voltage</b>	<b>277 ~ 480VAC</b>
922.0 x 250.0 x 514.0(mm)	<b>Size</b>	<b>491.0 x 496.8 x 264.8(mm)</b>
26.0kg (Driver Excluded)	<b>Weight</b>	<b>12.3kg (Bracket Include / Driver Exclude)</b>
-	<b>EPA</b>	<b>Front:0.16m² / Side 0.07m²</b>
IP66	<b>IP Rating</b>	<b>IP66</b>

• Tolerance ±5%



## SFPIK5

Remote Driver

• The certification shown at the top is part of an ongoing project



• The specifications listed above are subject to change without notice to improve product performance.

# SFP Series New Lineup



**SFPIK2**

**Rear Mount Driver**



• The certification shown at the top is part of an ongoing project.



**SFP800**

**Rear Mount Driver**

• The certification shown at the top is part of an ongoing project.

5000K / 70 Ra	Color Temp. and CRI	5000K / 70 Ra
<b>157,200 lm</b>	Luminous Flux	<b>104,800 lm</b>
<b>131 lm/W</b>	Luminous Efficacy	<b>131 lm/W</b>
<b>15° (Symmetric) / 30° (Asymmetric   Symmetric) / 45° (Symmetric)</b>	Light distribution	<b>15° (Symmetric) / 30° (Asymmetric   Symmetric) / 45° (Symmetric)</b>
<b>200 ~ 480VAC</b>	Input Voltage	<b>200 ~ 480VAC</b>
<b>491.0 x 496.8 x 340.0(mm)</b>	Size	<b>348.6 x 496.8 x 303.0(mm)</b>
<b>18.0kg (Bracket / Driver Include)</b>	Weight	<b>14.0kg (Bracket / Driver Include)</b>
<b>Front 0.16m<sup>2</sup> / Side 0.08m<sup>2</sup></b>	EPA	<b>Front 0.11m<sup>2</sup> / Side 0.07m<sup>2</sup></b>
<b>IP66</b>	IP Rating	<b>IP66</b>

• Tolerance ±5%



**SFPIK5**

**Rear Mount Driver**



• The certification shown at the top is part of an ongoing project.



**SFPIK5**

**Remote Driver**

(750W x 2ea : Dual Module)

• The certification shown at the top is part of an ongoing project.

5000K / 70 Ra	Color Temp. and CRI	5000K / 70 Ra
<b>184,500 lm</b>	Luminous Flux	<b>196,500 lm</b>
<b>123 lm/W</b>	Luminous Efficacy	<b>131 lm/W</b>
<b>15° (Symmetric) / 30° (Asymmetric   Symmetric) / 45° (Symmetric)</b>	Light distribution	<b>15° (Symmetric) / 30° (Asymmetric   Symmetric) / 45° (Symmetric)</b>
<b>277 ~ 480VAC</b>	Input Voltage	<b>277 ~ 480VAC</b>
<b>491.0 x 496.8 x 340.0(mm)</b>	Size	<b>698.0 x 496.8 x 249.3(mm)</b>
<b>18.0kg (Bracket / Driver Include)</b>	Weight	<b>17.6kg (Bracket Include)</b>
<b>Front 0.16m<sup>2</sup> / Side 0.08m<sup>2</sup></b>	EPA	<b>Front 0.22m<sup>2</sup> / Side 0.07m<sup>2</sup></b>
<b>IP66</b>	IP Rating	<b>IP66</b>

• Tolerance ±5%

• The specifications listed above are subject to change without notice to improve product performance.

Remote controller **Tilting** and **Steering**

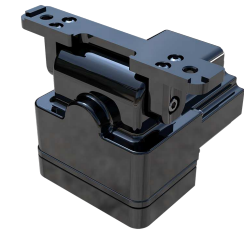
# RTS™-G2 Motorized Bracket Option



Tilt 15 ~ -80deg



Steering ±80deg



- ① RS-485 remote communication for easy angle adjustment
- ② Zigbee wireless control for simpler angle adjustment  
(enables flexible control without complex wiring)
- ③ Reduced fixture quantity through mobile photometric design.

## RTS-G2 Bracket Specifications (2025. 1Q available)

Model Name	<b>RTS-G2</b>
Input Voltage	<b>24VDC</b>
Power Consumption	<b>MAX. 48W</b>
Adjustable Angle	<b>Steering ±80deg, Tilt 15 ~ -80deg</b>
Angular Velocity	<b>Steering 1.78rad/s, Tilt 2.4rad/s</b>
Size	<b>178.0 x 134.0 x 162.5mm</b>
Weight	<b>2.4Kg</b>
Finish	<b>Electro-deposition Coating</b>
IP Rating	<b>IP65</b>

· The specifications listed above are subject to change without notice to improve product performance.

# MHP Series Comparison

## MAH200

Built-in Driver



## MHP300

Built-in Driver

300W (Adjusted output from 400W)

• The certification shown at the top is part of an ongoing project.

5000K / 70 Ra	<b>Color Temp. and CRI</b>	<b>5000K / 70 Ra</b>
30,000 lm	<b>Luminous Flux</b>	<b>41,700 lm</b>
150 lm/W	<b>Luminous Efficacy</b>	<b>139 lm/W</b>
Asymmetric Wide	<b>Light distribution</b>	<b>Asymmetric Wide</b>
100 ~ 240VAC / 120 ~ 277VAC / 347 ~ 480VAC	<b>Input Voltage</b>	<b>277 ~ 480VAC</b>
347.0 x 412.0 x 242.0(mm)	<b>Size</b>	<b>407.0 x 341.0 x 239.0(mm)</b>
7.5kg (Driver Include)	<b>Weight</b>	<b>9.0kg (Driver Include)</b>
Front 0.046m <sup>2</sup> / Side 0.044m <sup>2</sup>	<b>EPA</b>	<b>Front 0.096m<sup>2</sup> / Side 0.046m<sup>2</sup></b>
IP66	<b>IP Rating</b>	<b>IP66</b>

• Tolerance ±5%

## MAH400

Built-in Driver



## MHP400

Built-in Driver

• The certification shown at the top is part of an ongoing project.

5000K / 70 Ra	<b>Color Temp. and CRI</b>	<b>5000K / 70 Ra</b>
60,000 lm	<b>Luminous Flux</b>	<b>52,000 lm</b>
150 lm/W	<b>Luminous Efficacy</b>	<b>130 lm/W</b>
Asymmetric Wide	<b>Light distribution</b>	<b>Asymmetric Wide</b>
100 ~ 240VAC / 120 ~ 277VAC / 347 ~ 480VAC	<b>Input Voltage</b>	<b>277 ~ 480VAC</b>
475.0 x 525.0 x 196.0(mm)	<b>Size</b>	<b>407.0 x 341.0 x 239.0(mm)</b>
15kg (Driver Include)	<b>Weight</b>	<b>9.0kg (Driver Include)</b>
Front 0.057m <sup>2</sup> / Side 0.042m <sup>2</sup>	<b>EPA</b>	<b>Front 0.096m<sup>2</sup> / Side 0.046m<sup>2</sup></b>
IP66	<b>IP Rating</b>	<b>IP66</b>

• Tolerance ±5%

• The specifications listed above are subject to change without notice to improve product performance.

# MHP Series Comparison

## MAH600

Built-in Driver



• The product will be discontinued starting Q2 2025.



## MHP600

Built-in Driver

600W (Adjusted output from 800W)

• The certification shown at the top is part of an ongoing project.

5000K / 70 Ra	<b>Color Temp. and CRI</b>	<b>5000K / 70 Ra</b>
90,000 lm	<b>Luminous Flux</b>	<b>83,400 lm</b>
150 lm/W	<b>Luminous Efficacy</b>	<b>139 lm/W</b>
Asymmetric Wide	<b>Light distribution</b>	<b>Asymmetric Wide</b>
220 ~ 240VAC / 200 ~ 277VAC / 347 ~ 480VAC	<b>Input Voltage</b>	<b>200 ~ 480VAC</b>
577.0 x 543.0 x 280.0(mm)	<b>Size</b>	<b>407.0 x 341.0 x 359.0(mm)</b>
20.0kg (Driver Include)	<b>Weight</b>	<b>11.5kg (Driver Include)</b>
Front 0.128m <sup>2</sup> / Side 0.091m <sup>2</sup>	<b>EPA</b>	<b>Front 0.096m<sup>2</sup> / Side 0.074m<sup>2</sup></b>
IP66	<b>IP Rating</b>	<b>IP66</b>

• Tolerance ±5%

## MAH800

Built-in Driver



• The product will be discontinued starting Q2 2025.



## MHP800

Built-in Driver

• The certification shown at the top is part of an ongoing project.

5000K / 70 Ra	<b>Color Temp. and CRI</b>	<b>5000K / 70 Ra</b>
116,000 lm	<b>Luminous Flux</b>	<b>104,000 lm</b>
145 lm/W	<b>Luminous Efficacy</b>	<b>130 lm/W</b>
Asymmetric Wide	<b>Light distribution</b>	<b>Asymmetric Wide</b>
220 ~ 240VAC / 200 ~ 277VAC / 347 ~ 480VAC	<b>Input Voltage</b>	<b>200 ~ 480VAC</b>
620.0 x 767.0 x 275.0(mm)	<b>Size</b>	<b>407.0 x 341.0 x 359.0(mm)</b>
28.2kg (Driver Exclude)	<b>Weight</b>	<b>11.5kg (Driver Include)</b>
Front 0.13m <sup>2</sup> / Side 0.09m <sup>2</sup>	<b>EPA</b>	<b>Front 0.096m<sup>2</sup> / Side 0.074m<sup>2</sup></b>
IP66	<b>IP Rating</b>	<b>IP66</b>

• Tolerance ±5%

• The specifications listed above are subject to change without notice to improve product performance.

# MHP Series Comparison

## MAHIKO

Built-in Driver



• The product will be discontinued starting Q2 2025.

5000K / 70 Ra	<b>Color Temp. and CRI</b>	<b>5000K / 70 Ra</b>
150,000 lm	<b>Luminous Flux</b>	<b>136,000 lm</b>
150 lm/W	<b>Luminous Efficacy</b>	<b>136 lm/W</b>
Asymmetric Wide	<b>Light distribution</b>	<b>Asymmetric Wide</b>
220 ~ 240VAC / 200 ~ 277VAC / 347 ~ 480VAC	<b>Input Voltage</b>	<b>200 ~ 480VAC</b>
620.0 x 767.0 x 275.0(mm)	<b>Size</b>	<b>407.0 x 341.0 x 480.0(mm)</b>
28.2kg (Driver Include)	<b>Weight</b>	<b>14.0kg (Driver Include)</b>
Front 0.155m <sup>2</sup> / Side 0.067m <sup>2</sup>	<b>EPA</b>	<b>Front 0.096m<sup>2</sup> / Side 0.103m<sup>2</sup></b>
IP66	<b>IP Rating</b>	<b>IP66</b>

• Tolerance ±5%



## MHPIKO

Built-in Driver

1,000W (Adjusted output from 1,200W)

• The certification shown at the top is part of an ongoing project



## MAHIK2

Built-in Driver



• The product will be discontinued starting Q2 2025.

5000K / 70 Ra	<b>Color Temp. and CRI</b>	<b>5000K / 70 Ra</b>
174,000 lm	<b>Luminous Flux</b>	<b>156,000 lm</b>
145 lm/W	<b>Luminous Efficacy</b>	<b>130 lm/W</b>
Asymmetric Wide	<b>Light distribution</b>	<b>Asymmetric Wide</b>
220 ~ 240VAC / 200 ~ 277VAC / 347 ~ 480VAC	<b>Input Voltage</b>	<b>200 ~ 480VAC</b>
543.0 x 621.0 x 265.0(mm)	<b>Size</b>	<b>407.0 x 341.0 x 480.0(mm)</b>
28.2kg (Driver Include)	<b>Weight</b>	<b>14.0kg (Driver Include)</b>
Front 0.155m <sup>2</sup> / Side 0.099m <sup>2</sup>	<b>EPA</b>	<b>Front 0.096m<sup>2</sup> / Side 0.103m<sup>2</sup></b>
IP66	<b>IP Rating</b>	<b>IP66</b>

• Tolerance ±5%



## MHPIK2

Built-in Driver

• The certification shown at the top is part of an ongoing project



• The specifications listed above are subject to change without notice to improve product performance.

# MHP Series Comparison

**MAH1K6**

Built-in Driver



• The product will be discontinued starting Q2 2025.

5000K / 70 Ra	<b>Color Temp. and CRI</b>	<b>5000K / 70 Ra</b>
216,000 lm	<b>Luminous Flux</b>	<b>195,000 lm</b>
135 lm/W	<b>Luminous Efficacy</b>	<b>130 lm/W</b>
Asymmetric Wide	<b>Light distribution</b>	<b>Asymmetric Wide</b>
200 ~ 240VAC / 200 ~ 277VAC / 347 ~ 480VAC	<b>Input Voltage</b>	<b>277 ~ 480VAC</b>
612.0 x 1,045.0 x 367.0(mm)	<b>Size</b>	<b>407.0 x 341.0 x 659.0(mm)</b>
38.0kg (Driver Include)	<b>Weight</b>	<b>16.0kg (Driver Include)</b>
Front 0.24m <sup>2</sup> / Side 0.1m <sup>2</sup>	<b>EPA</b>	<b>Front 0.096m<sup>2</sup> / Side 0.144m<sup>2</sup></b>
IP66	<b>IP Rating</b>	<b>IP66</b>

• Tolerance ±5%



**MHPIK5**

Built-in Driver

• The certification shown at the top is part of an ongoing project.



**MHPIK8**

Built-in Driver

• The certification shown at the top is part of an ongoing project.

5000K / 70 Ra	<b>Color Temp. and CRI</b>	<b>5000K / 70 Ra</b>
234,000 lm	<b>Luminous Flux</b>	<b>234,000 lm</b>
130 lm/W	<b>Luminous Efficacy</b>	<b>130 lm/W</b>
Asymmetric Wide	<b>Light distribution</b>	<b>Asymmetric Wide</b>
200 ~ 480VAC	<b>Input Voltage</b>	<b>200 ~ 480VAC</b>
407.0 x 341.0 x 695.0(mm)	<b>Size</b>	<b>407.0 x 341.0 x 695.0(mm)</b>
20.0kg (Driver Include)	<b>Weight</b>	<b>20.0kg (Driver Include)</b>
Front 0.096m <sup>2</sup> / Side 0.161m <sup>2</sup>	<b>EPA</b>	<b>Front 0.096m<sup>2</sup> / Side 0.161m<sup>2</sup></b>
IP66	<b>IP Rating</b>	<b>IP66</b>

• The specifications listed above are subject to change without notice to improve product performance.

• Tolerance ±5%

# Ordering Information

## SFP Series Ordering Information - Usage: SFP800-H50S157SRBNZBST

	Power Consumption		Input Voltage	CCT(K)	Beam Type	Angle	CRI	Body Type	Driver Type
	000		0	00	0	00	00	0	0
<b>SFP</b>	<b>600</b> = 600W <b>800</b> = 800W <b>1K2</b> = 1,200W <b>1K5</b> = 1,500W	-	<b>D</b> = DC 200 <b>H</b> = AC 200 ~ 277V <b>N</b> = AC 200 ~ 480V <b>P</b> = AC 277 ~ 480V	<b>57</b> = 5700K <b>50</b> = 5000K <b>40</b> = 4000K <b>30</b> = 3000K	<b>A</b> = Asymmetric <b>S</b> = Symmetric	<b>15</b> = 15° <b>30</b> = 30° <b>45</b> = 45°	<b>9</b> = 90Ra <b>8</b> = 80Ra <b>7</b> = 70Ra	<b>S</b> = Single <b>D</b> = Dual	<b>R</b> = Remote type <b>D</b> = Direct mounted type <b>B</b> = Bridge bracket mounted type

Fixture Color	Visor	Control Option	Bracket Option
0	0	00	00
<b>B</b> = Black <b>G</b> = Grey	<b>N</b> = None <b>L</b> = Left Side <b>R</b> = Right Side <b>T</b> = Triple Side or Triangle	<b>ZB</b> = Zigbee <b>RS</b> = RS-485 <b>DM</b> = DMX512 <b>D2</b> = DALI-2 <b>NM</b> = NEMA socket <b>ZG</b> = Zhaga socket <b>DG</b> = Digital	<b>ST</b> = Standard Straight type Bracket <b>RH</b> = Reverse Hanging type Bracket <b>AT</b> = Arm Tenon type Bracket <b>YS</b> = Yoke Straight type Bracket <b>YR</b> = Yoke Reverse type Bracket <b>IW</b> = Internal Wiring type Bracket <b>RT</b> = Tilt and Steering type Bracket (*2025 1Q available)

• The specifications listed above are subject to change without notice to improve product performance.

# Ordering Information

## MHP Series Ordering Information - Usage: MHP400-H50A657RBNZBST

	Power Consumption		Input Voltage	CCT(K)	Beam Angle	CRI	Driver Type
	000		0	00	000	00	0
<b>MHP</b>	<b>300</b> = 300W <b>400</b> = 400W <b>600</b> = 600W <b>800</b> = 800W <b>1K0</b> = 1,000W <b>1K2</b> = 1,200W <b>1K5</b> = 1,500W <b>1K8</b> = 1,800W	-	<b>H</b> = AC 200 ~ 277V <b>N</b> = AC 200 ~ 480V <b>P</b> = AC 277 ~ 480V	<b>57</b> = 5700K <b>50</b> = 5000K <b>40</b> = 4000K <b>30</b> = 3000K	<b>A45</b> = 45° (Lens Asymmetric) <b>A65</b> = 65° (Lens Asymmetric) <b>A90</b> = 90° (Lens Asymmetric)	<b>9</b> = 90Ra <b>8</b> = 80Ra <b>7</b> = 70Ra	<b>R</b> = Remote type <b>D</b> = Direct mounted type <b>B</b> = Bridge bracket mounted type
Fixture Color	Visor	Control Option	Bracket Option				
0	0	00	00				
<b>B</b> = Black <b>G</b> = Grey	<b>N</b> = None <b>E</b> = Equipped	<b>ZB</b> = Zigbee <b>RS</b> = RS-485 <b>DM</b> = DMX512 <b>D2</b> = DALI-2 <b>NM</b> = NEMA socket <b>ZG</b> = Zhaga socket <b>DG</b> = Digital	<b>ST</b> = Standard Straight type Bracket <b>RH</b> = Reverse Hanging type Bracket <b>AT</b> = Arm Tenon type Bracket <b>YS</b> = Yoke Straight type Bracket <b>YR</b> = Yoke Reverse type Bracket <b>IW</b> = Internal Wiring type Bracket <b>RT</b> = Tilt and Steering type Bracket (*2025 1Q available)				

• The specifications listed above are subject to change without notice to improve product performance.

**THANK YOU**  
FOR YOUR INTEREST

---

Transforming **Light**, Transforming **Spaces**

GigaTera<sup>®</sup>  
beyond light