

Health Care in the Age of AI

Lloyd Minor, MD

Carl and Elizabeth Naumann Dean
Stanford University School of Medicine



Stanford | MEDICINE

Transatlantic Sync
October 29, 2018

Disclosures

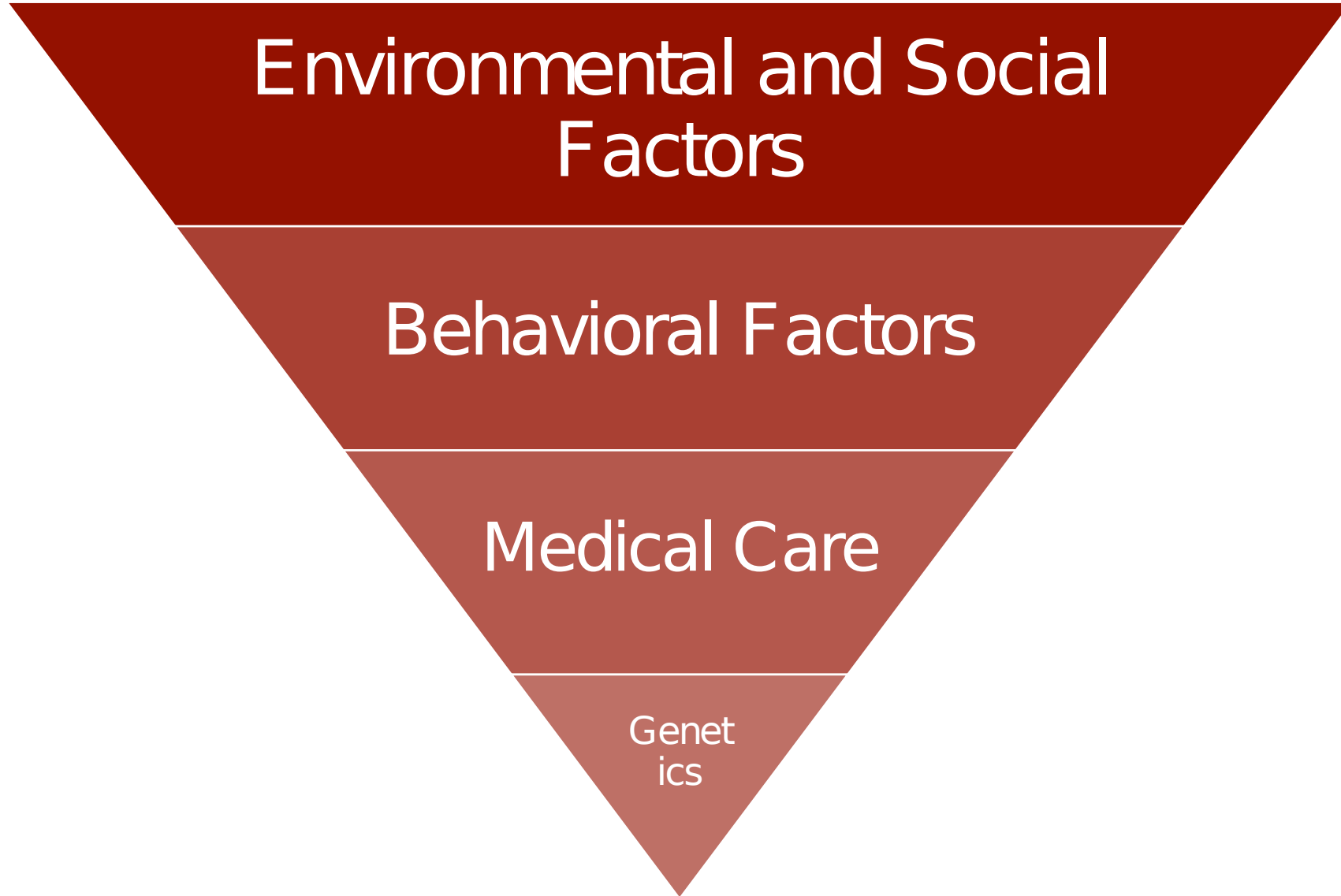
- aMoon, Advisor
- Ancestry.com, Advisor
- General Atlantic, Advisor
- Mammoth Biosciences, Member - Scientific Advisory Board
- Mission Bio, Member - Scientific Advisory Board
- Novartis, Member - Digital Health Advisory Council (not compensated)
- Thrive Global, Scientific Advisory Board (not compensated)

Financial disclosures related to this presentation:

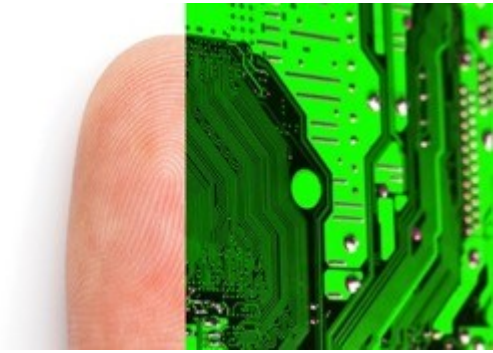
Common stock owned (purchased before the digital health collaborations described in this talk with these companies):

- Alphabet
- Apple Computer

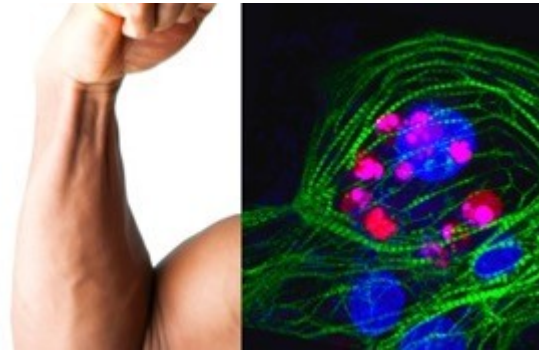
Determinants of Health



Precision Health

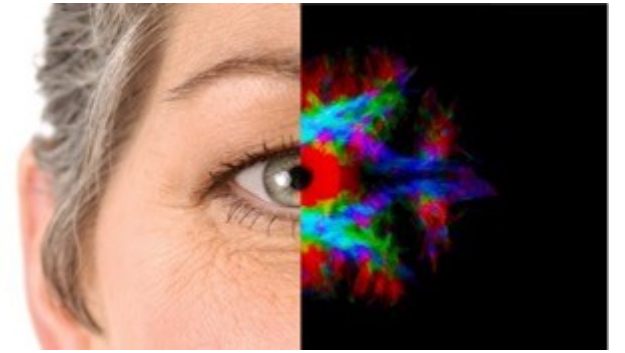


predict



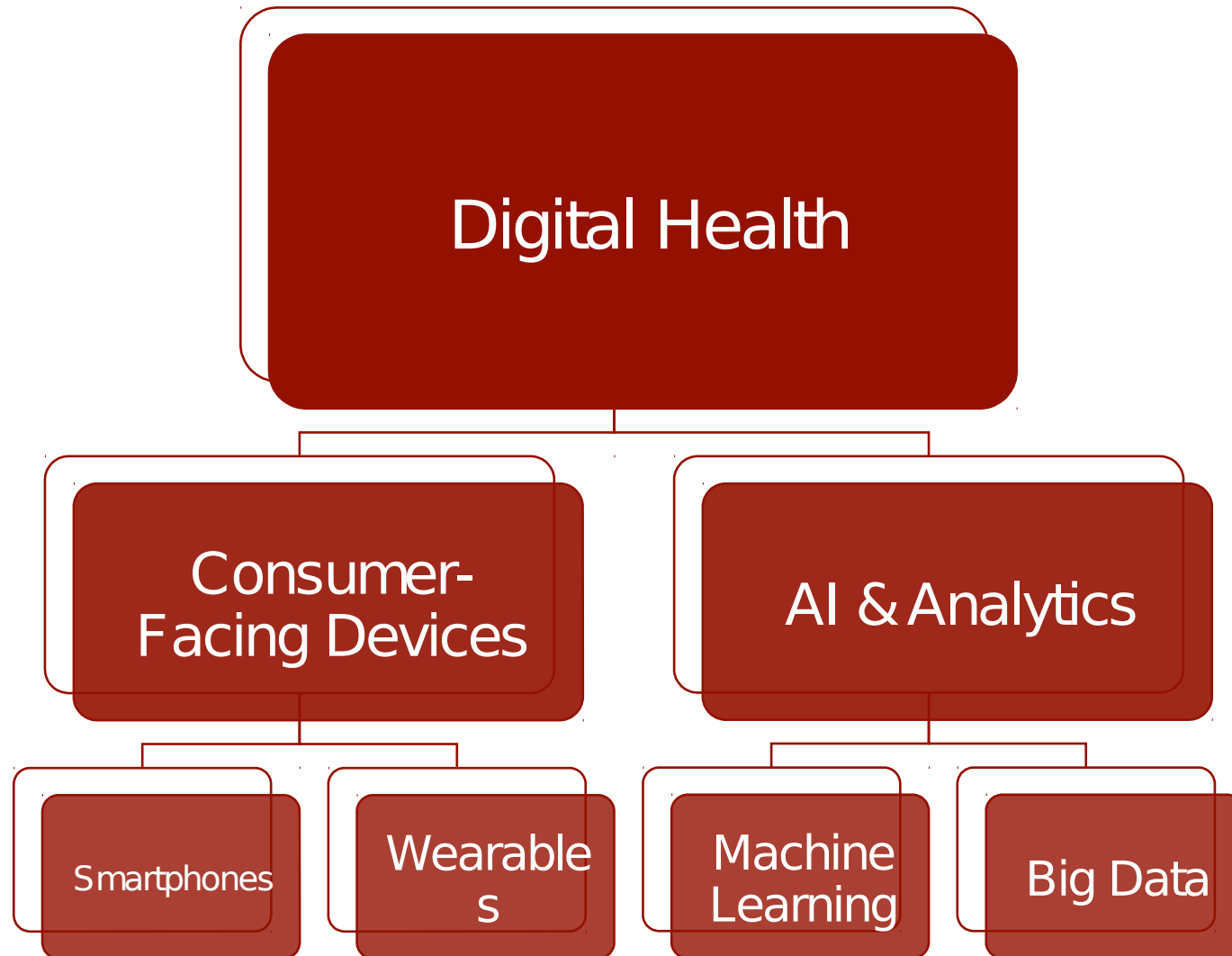
prevent

precisely



cure

Pillars of Digital Health



Precision Health & Integrated Diagnostics Center



Sam Gambhir,
MD, PhD



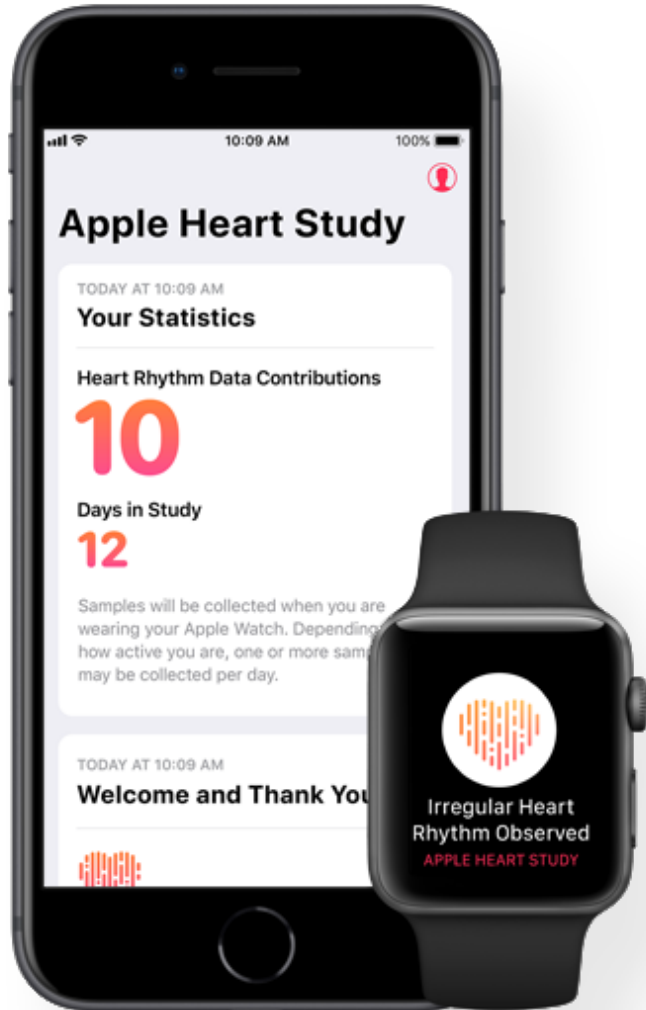
Michael
Snyder, PhD

Project Baseline



- 4-year longitudinal study to understand transition to illness
- 10,000 participants
- Will begin to see results in 2021

Apple Heart Study



- 400,000+ participants
- .5% received irregular pulse notifications
- 84% of those notified were in AFib when notified
- 57% who received notifications sought medical attention