

產品應用領域:

- 化學、化工業
- 印刷油墨/切削油、液壓油輸送
- 廢水處理/流體輸送
- 電解電鍍產業
- 普通液體輸送/供給
- 包裝/填充
- 批量液體處理/混合
- 系統沖洗
- 循環/回收

海事
排放和輸送

污水
海水
柴油

電子產業
製程用水
排放和輸送

廢水
強酸
強鹼

電鍍產業
電解液排放

污水
運水
電解液

醫藥產業
食物及藥物
供應和輸送

FDA物料

化工產業
各種化學藥劑

清潔劑
清潔/擦亮劑
油漆/燃料
粘合劑
油墨
針對剪切敏感物料

汽車產業
油漆供應和輸送

密封劑
粘結劑
溶液
溶劑
油漆





High-Intensity

The shell material is designed with a double-layer structure for increased strength and to prevent liquid leakage in the combined parts under high pressure.



High-performance

Significantly higher efficiency compared to similar products in the market.



More stable Easy to maintain

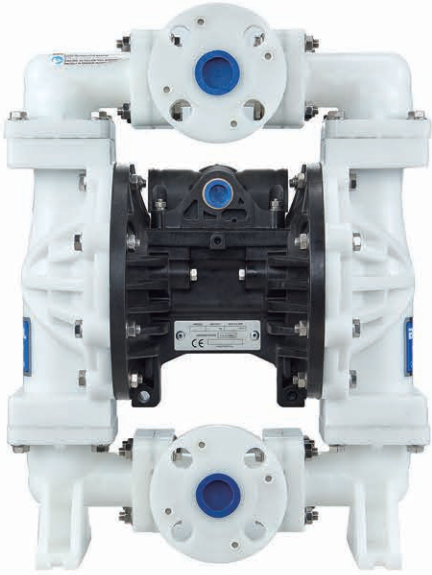
- 1.A stall-free low pulsation air valve design provides a smooth and rapid changeover.
- 2.External directional valve for quick and easy maintenance without removing diaphragm pump.



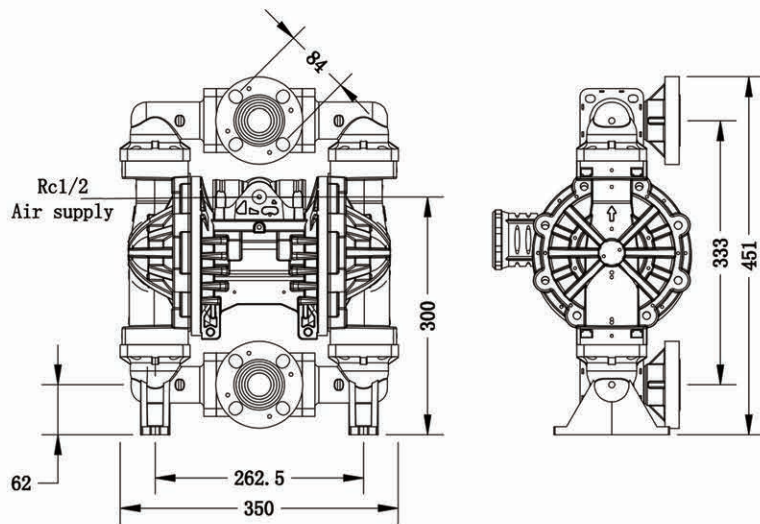
Fully plasticized center

When the external pipeline leakage, effectively prevent leakage liquid dripping on the center and cause corrosion.

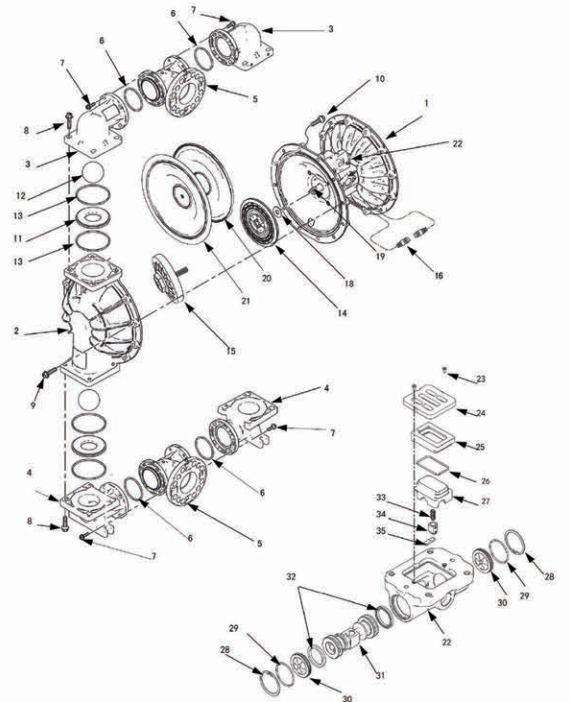
TYP 25PB



Drawing



Drawing Picture



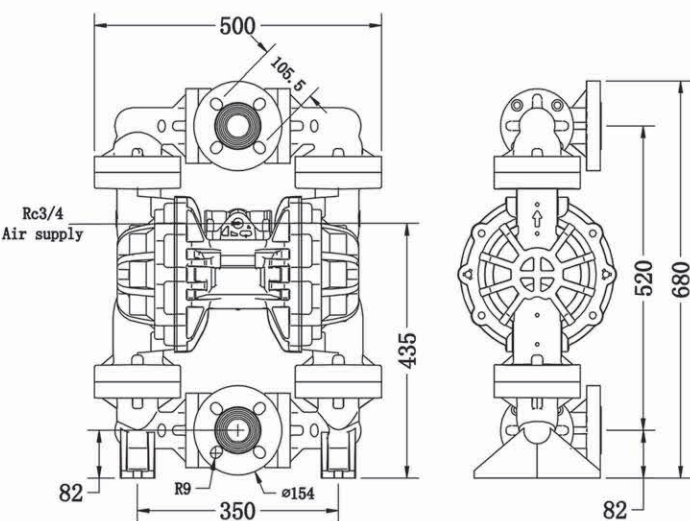
PARAMETERS

Maximum Flow Rate	189 L/min	Displacement Per Cycle	0.64 L
Air Supply Pressure Range	0.2-0.8 Mpa	Maximum Discharge Pressure	0.8 Mpa
Material of Construction	Polypropylene	Material of Diaphragm	Teflon, Santoprene
Liquid Connection Size	1"	Thread Type	Flange
Air Connection Size	1/2"	Suction Lift	D4.9m/W8.8m
Lift	70 m	Maximum Solids	3.2 mm
Net Weight	8.2 kg	Gross Weight	9 kg
Packing Size	39* 22.5* 52 cm		

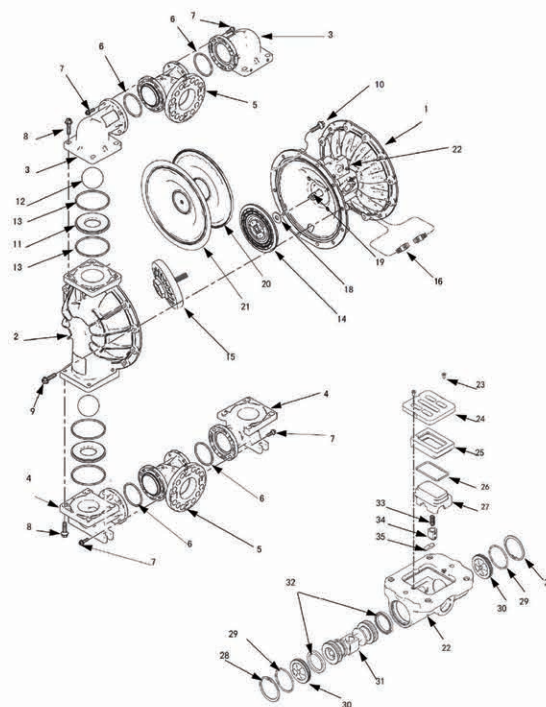
TYP 40PB



Drawing



Drawing Picture



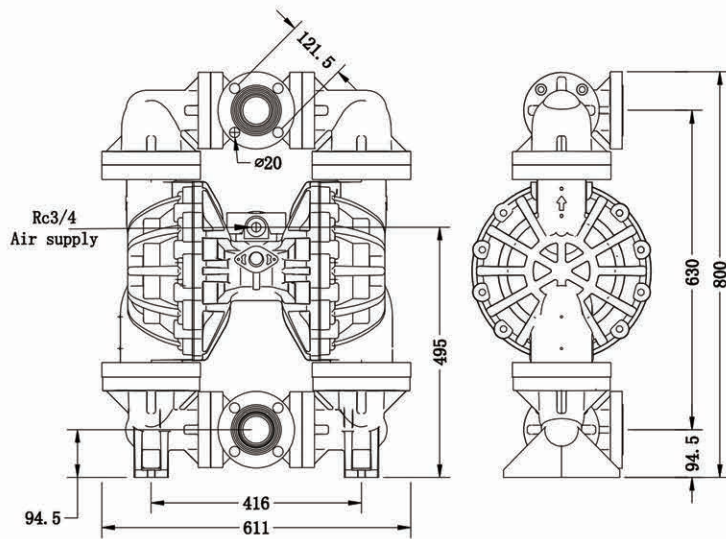
PARAMETERS

Maximum Flow Rate	454 L/min	Displacement Per Cycle	2.5 L
Air Supply Pressure Range	0.2-0.8 Mpa	Maximum Discharge Pressure	0.8 Mpa
Material of Construction	Polypropylene	Material of Diaphragm	Teflon, Santoprene
Liquid Connection Size	1.5"	Thread Type	Flange
Air Connection Size	1/2"	Suction Lift	D4.9m/W9.4m
Lift	70 m	Maximum Solids	6.3 mm
Net Weight	24 kg	Gross Weight	25 kg
Packing Size	52*29*71 cm		

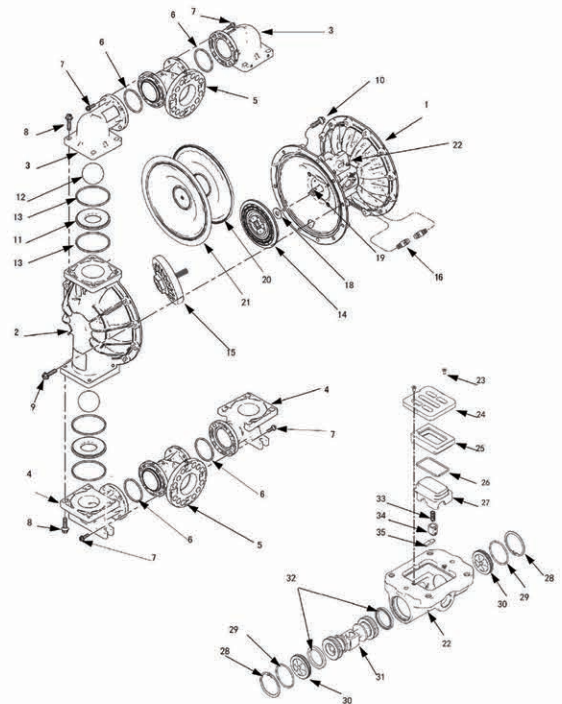
TYP 50PB



Drawing



Drawing Picture



PARAMETERS

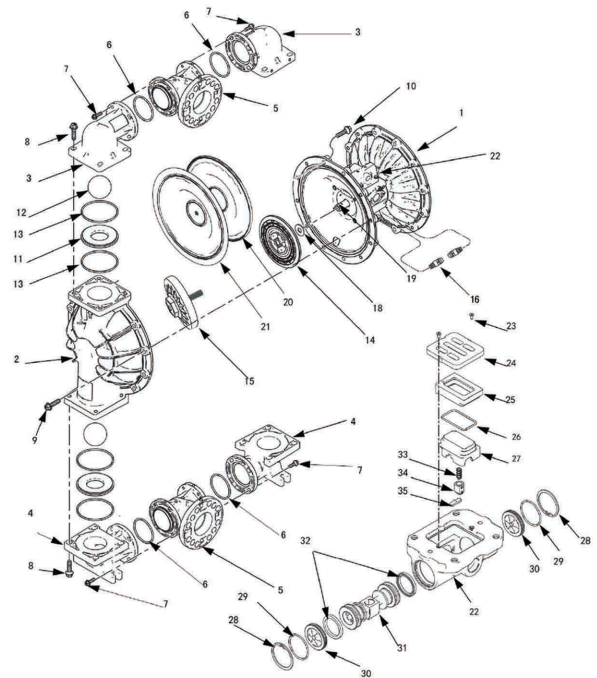
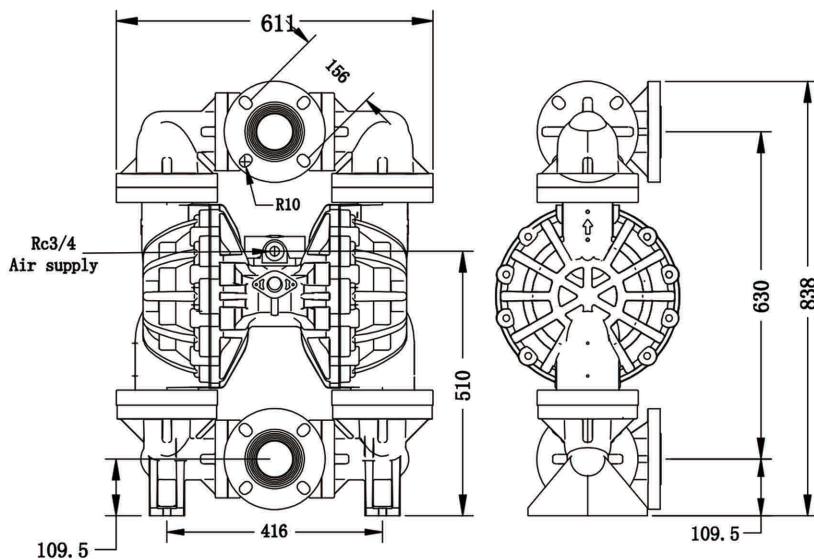
Maximum Flow Rate	757 L/min	Displacement Per Cycle	6.1 L
Air Supply Pressure Range	0.2-0.8 Mpa	Maximum Discharge Pressure	0.8 Mpa
Material of Construction	Polypropylene	Material of Diaphragm	Teflon, Santoprene
Liquid Connection Size	2"	Thread Type	Flange
Air Connection Size	3/4"	Suction Lift	D4.9m/W9.4m
Lift	70 m	Maximum Solids	9.5 mm
Net Weight	40 kg	Gross Weight	42kg
Packing Size	62*36*83 cm		

TYP 80PB



Drawing

Drawing Picture



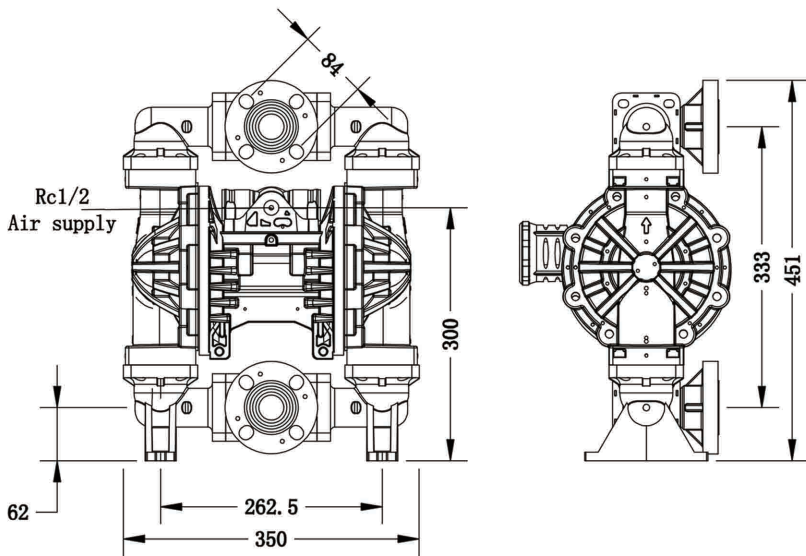
PARAMETERS

Maximum Flow Rate	757 L/min	Displacement Per Cycle	6.1 L
Air Supply Pressure Range	0.2-0.8 Mpa	Maximum Discharge Pressure	0.8 Mpa
Material of Construction	Polypropylene	Material of Diaphragm	Teflon, Santoprene
Liquid Connection Size	3"	Thread Type	Flange
Air Connection Size	3/4"	Suction Lift	D4.9m/W9.4m
Lift	70 m	Maximum Solids	9.5 mm
Net Weight	42 kg	Gross Weight	44kg
Packing Size	62*36*86 cm		

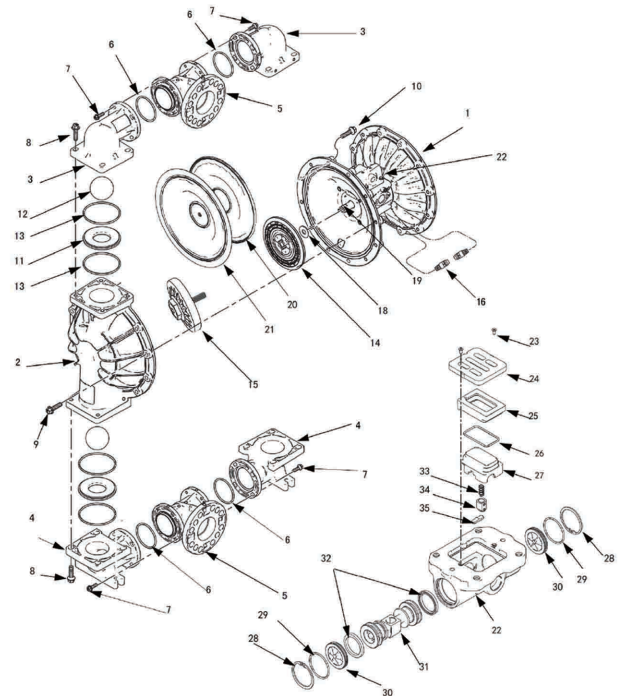
TYP-25PVDF



Drawing



Drawing Picture



PARAMETERS

Maximum Flow Rate	189 L/min	Displacement Per Cycle	0.64 L
Air Supply Pressure Range	0.2-0.8 Mpa	Maximum Discharge Pressure	0.8 Mpa
Material of Construction	PVDF	Material of Diaphragm	Teflon
Liquid Connection Size	1"	Thread Type	Flange
Air Connection Size	1/2"	Suction Lift	D4.9m/W8.8m
Lift	70 m	Maximum Solids	3.2 mm
Net Weight	11kg	Gross Weight	12kg
Packing Size	39* 22.5* 52 cm		