



*Behind The Scenes*

# *Hot Stamping*

*by*  
**KULT**

2025

Kult Kartel Pte Ltd





Kingsley Machine M-60, circa 1930



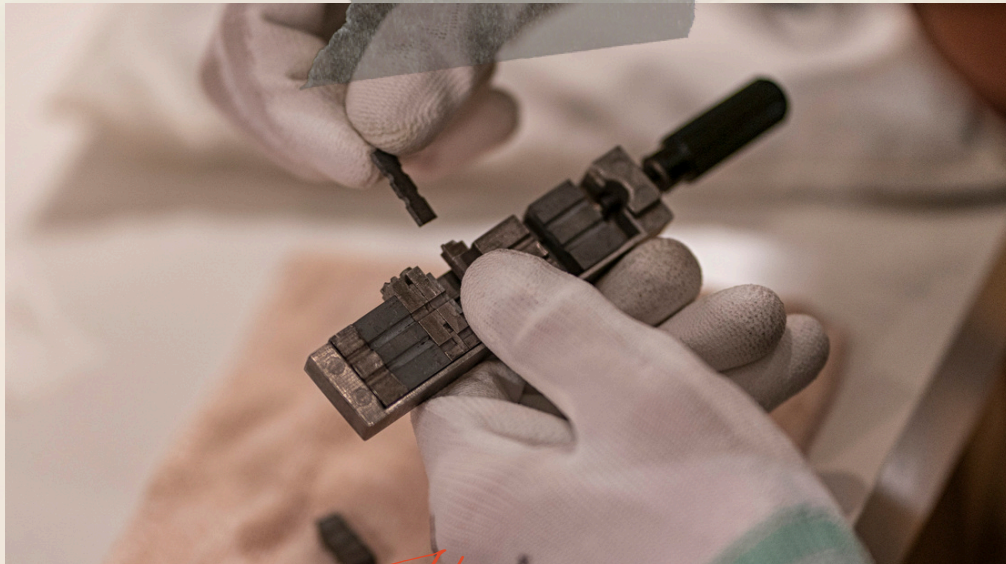
Wide selection of fonts

## *About the* KULT

Our expert hotstamping artisans are committed to delivering prompt and precise prints for both bulk and individual orders. Our vast selection of over 20 type fonts and 20 colors ensures a style to suit every preference.







# *Hotstamping* **RATES**

## **Part I. Jig Set-Up & Typesetting (individual)**

Jig Set-Up, per SKU	20
Type-Setting (10-character maximum)	5
Subsequent per character including Space	0.50
Per Press, up to 10 pcs	5
Per Press, > 10 pcs (to to 500)	Refer to Part II

## **Part II. Bulk Printing (same image for all)**

Jig Set-Up, per SKU	20
Type-Setting Logo Stamp	5
Per Press, 11-100 pcs	4.50
Per Press, 101-500 pcs	3.50
Per Press, 501-1000 pcs	2.50
Per Press, 1001-5000 pcs	0.95
Per Press, > 5000 pcs	0.85

## **Part III. Logo/ Image (in .ai or vector format)**

Logo Stamp, 15-day Regular	85
Logo Stamp, 4-day Express	185
Logo Stamp, Overnight	355
Digitization (Image conversion to AI/vector)	80

Important note: The above rates are for flat and level surfaces and finishings that allow complete foil transfer. For uneven or challenging surfaces, the lead time required may be longer, and the per press rate quoted may be higher. Test prints on sacrificial samples are mandatory. 1-5% additional units required as buffer for defects.





# Font

# Fonts



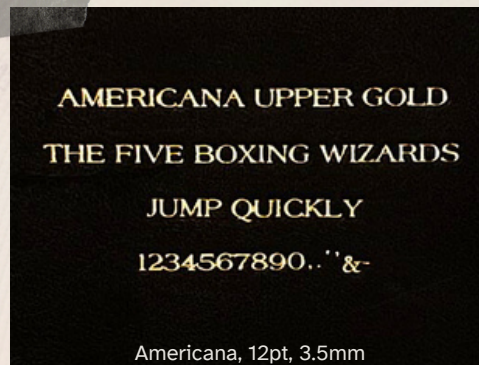
Oval Monogram, 1/3, 24.3mm



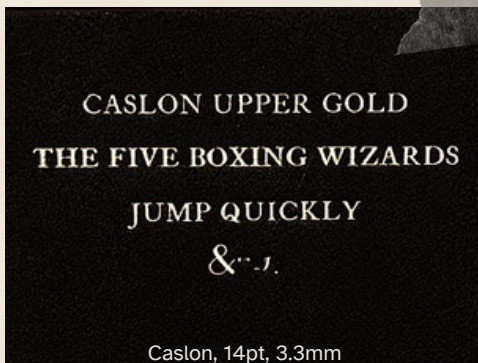
Empire, 72pt, 25.3mm



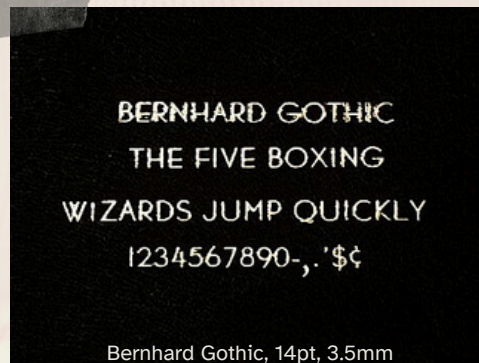
Parisian, 18pt, 5.1mm



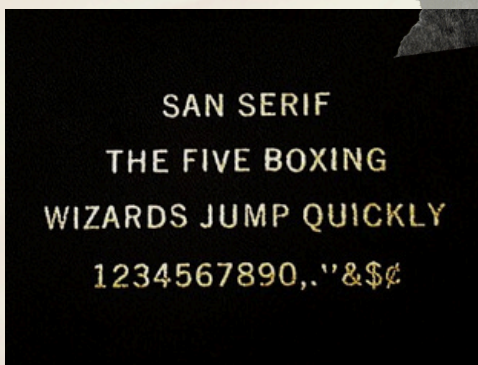
Americana, 12pt, 3.5mm



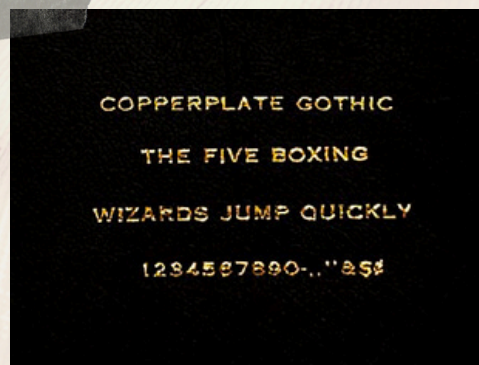
Caslon, 14pt, 3.3mm



Bernhard Gothic, 14pt, 3.5mm



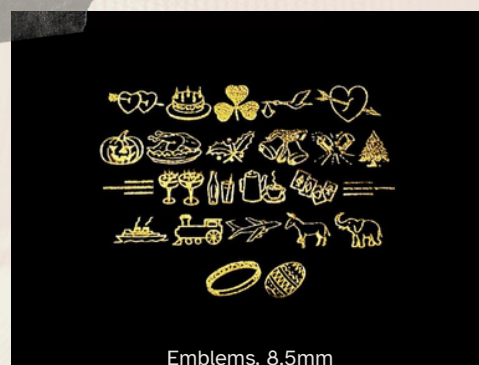
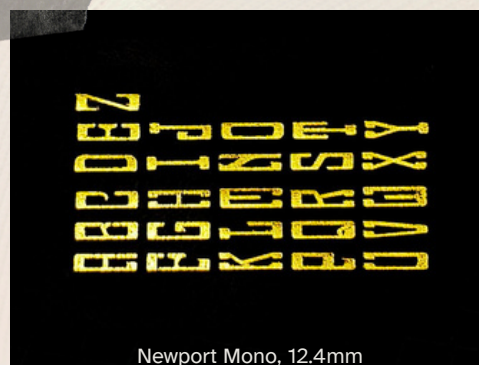
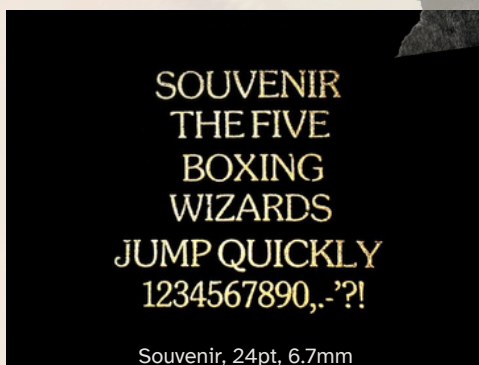
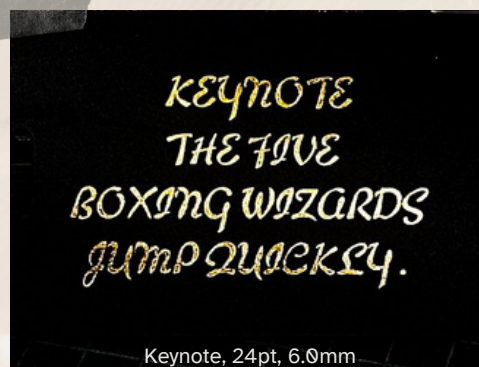
San Serif, 15pt, 5.2mm



Copperplate Gothic, 14pt, 3.5mm







#### Metallic Colours:

Gold, Silver, Black, Red, Pink, Purple,  
Blue, Green, Orange, Bronze, Black,  
Pearlescent

#### Matte Colours :

Gold, Silver, White, Black, Red, Pink,  
Purple, Blue, Green, Orange

MORE FONTS







# Meet The KING(SLEY)

## Kingsley Machine M-60

Made in the 1930's, the M-60 Kingsley was one of the most iconic hotstamping machine of its time. It features a fully analogue temperature control unit and manual press. Type needed to be manually set, centred, and slotted for heating. It is our mainstay equipment feature which we have multiple units of, and we provide additional machines for high profile events to ensure smooth running and instantaneous replacement in the rare case of a breakdown.

The duration of each print depends on the number of characters. As a ballpark figure, every character will take 30-seconds to set, heat, print, and reset. An 11-character name, for instance "J.P. MORGAN" will take about 5 minutes. Blank spaces and symbols like "." are counted as characters as they add to the time taken for typesetting.

Spatial requirements:

Machine footprint - 25cm width x 35cm depth x 30cm height

Working space - 45cm x 60cm minimum





# *Make* CONTACT

Phone: +65 8283 9343  
Email: [hello@kultbespoke.com](mailto:hello@kultbespoke.com)



INQUIRY



[www.kultbespoke.com](http://www.kultbespoke.com)