

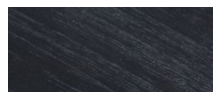
PACIFIC

Pacific-01 Folding chair

FRAME



Teak natural

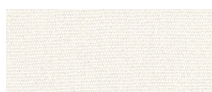


Teak burnt charcoal

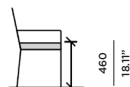
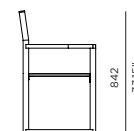
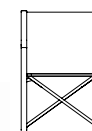
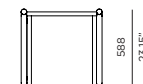
SEAT



White Batyline



Sunbrella - Natural



SPECIAL FEATURES



PROTECTIVE COVER



DESCRIPTION:

Introducing, the Harbour Pacific Collection. A coastal, modern design, the Harbour Pacific Collection combines thick, removable arms, which creates custom sections of your choice. Robust, solid, and heavy duty, this brand new teak range can mold to any outdoor living space with ease. We take grade-A Indonesian, plantation teak to form a fresh collection with Harbour's classic quality and style. From teak folding chairs with Harbour's unique folding mechanism, extendable teak top tables, stacking sunbeds, and sofas with removable arms that create up to twelve layout combinations, the Pacific collection is designed to suit any need.

PROTECTIVE COVERS:

Protect your investment with water-repellent Sea-Sprae® fabric; protective backside coating, UV resistant.

SHIPPING AND DELIVERY:

Stock frames and stock cushions delivered in 1-3 weeks.
Stock frames with COM cushions delivered in 3-6 weeks.
Custom Orders delivered in 10-14 weeks.

WARRANTY:

FRAMES: 5 limited warranty on structural integrity.
MATERIALS: 2 year limited warranty.

TECHNICAL INFORMATION

SUNBRELLA ®:
Solution-dyed, acrylic fiber, UV, water, and mold resistant outdoor fabric.

TEAK:
100% plantation grown, premium A-Grade teak.

SERGE FERRARI BATYLINE ® MESH:
Light diffusing, UV and mold resistant, PVC coated

Net Weight: 8 kg / 17.6 lb