

BYRON

Byron_03 Arm Chair

FRAME



Teak

SEAT



Silver Batyline

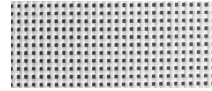
ACCENT



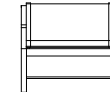
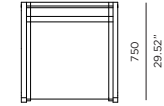
Brass



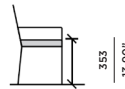
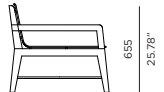
Teak - Burnt charcoal



White Batyline



720
28.34"



SPECIAL FEATURES



PROTECTIVE COVER



DESCRIPTION:

As the easternmost point in Australia, Byron Bay is one of Australia's most famous tourist destinations, with a style all its own. An exciting new feature range from Harbour Outdoor, Byron continues a new Harbour trend of using brass features with organic frames. Ferrari batyline mesh is paired with Indonesian teak, and a structural brass runner for support and style.

PROTECTIVE COVERS:

Protect your investment with water-repellent Sea-Sprae® fabric; protective backside coating, UV resistant.

SHIPPING AND DELIVERY:

Stock frames and stock cushions delivered in 1-3 weeks.
Stock frames with COM cushions delivered in 3-6 weeks.
Custom Orders delivered in 10-14 weeks.

WARRANTY:

FRAMES: 5 limited warranty on structural integrity.
MATERIALS: 2 year limited warranty.

TECHNICAL INFORMATION

TEAK:

100% plantation grown, premium A-Grade teak.

SERGE FERRARI BATYLINE * MESH:

Light diffusing, UV and mold resistant, PVC coated

Net Weight: 14 kg / 30.9 lb