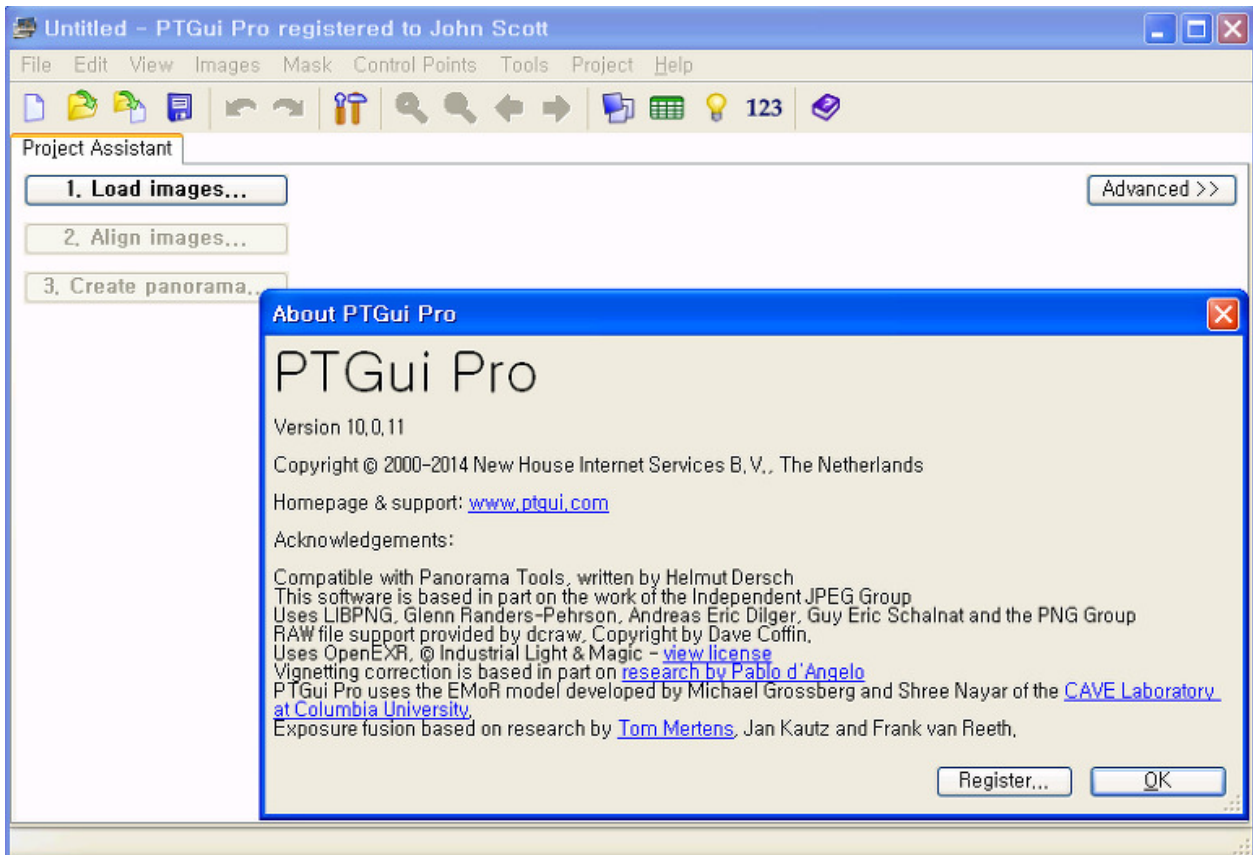

Crack Re Mouse Standard 3.4



DOWNLOAD: <https://byltly.com/2ikhke>

Download

.0.1. If you don't use those two settings, it is more likely that your account is one that was issued a temporary password or that a custom set of changes was created. If the latter is true, you would then need to reset your password to get it working again. This is from the bottom of the screen: The link allows you to reset the password if it was set via your IT pro (unless you have changed it) or if it was changed by you via the "customize" button to "My Account" on the bottom of the page. If you have been changing your password since you last logged on, then I would check with your IT pro. It is possible that they have changed the default security settings on your computer to prevent you from accessing your account. You need to have JavaScript enabled in your browser to view this and other My Old Site posts.

Q: MATLAB works too slowly if the data dimension is large I am just trying to make a simple MATLAB program to plot some data. The data is of (49x1), and the number of data points I want to plot is around 3000. So I tried to run the code. I found out that the program runs very slowly if the number of data points is larger than around 200. Is there a way to speed up the program? Here is my code: clear all; close all; clc clc; % Set the format for xlabel: xlabel('Number of proteins') % Set the format for ylabel: ylabel('SCO-score') % Set the format for title: titl = 'SCO-model for representative proteins' % Set the format for axis: axis([0 100 0 1]) % Set the format for legend: legend(p1,p2,p3) % Set the format for xlim: xlim([1 300]) % Set the format for ylim: ylim([0 -4]) % Set the format for data: data = rand(49,1); % Set the format for z data: % z data is generated randomly from a normal distribution % with mean around 0 and standard deviation around 1. z = randn(49,1); % Set the format for 520fdb1ae7

[HD Online Player \(Dilwale Dulhania Le Jayenge 720p hd \)
darlah 172 horas en la luna epub 13
CRACKMiniToolPartitionWizardPro1101SetupCrack](#)