


GRASSOBBIO
Via Anna Costanza Baldry

RESIDENZA GAIA
APPARTAMENTO B6
BILOCALE - PIANO PRIMO

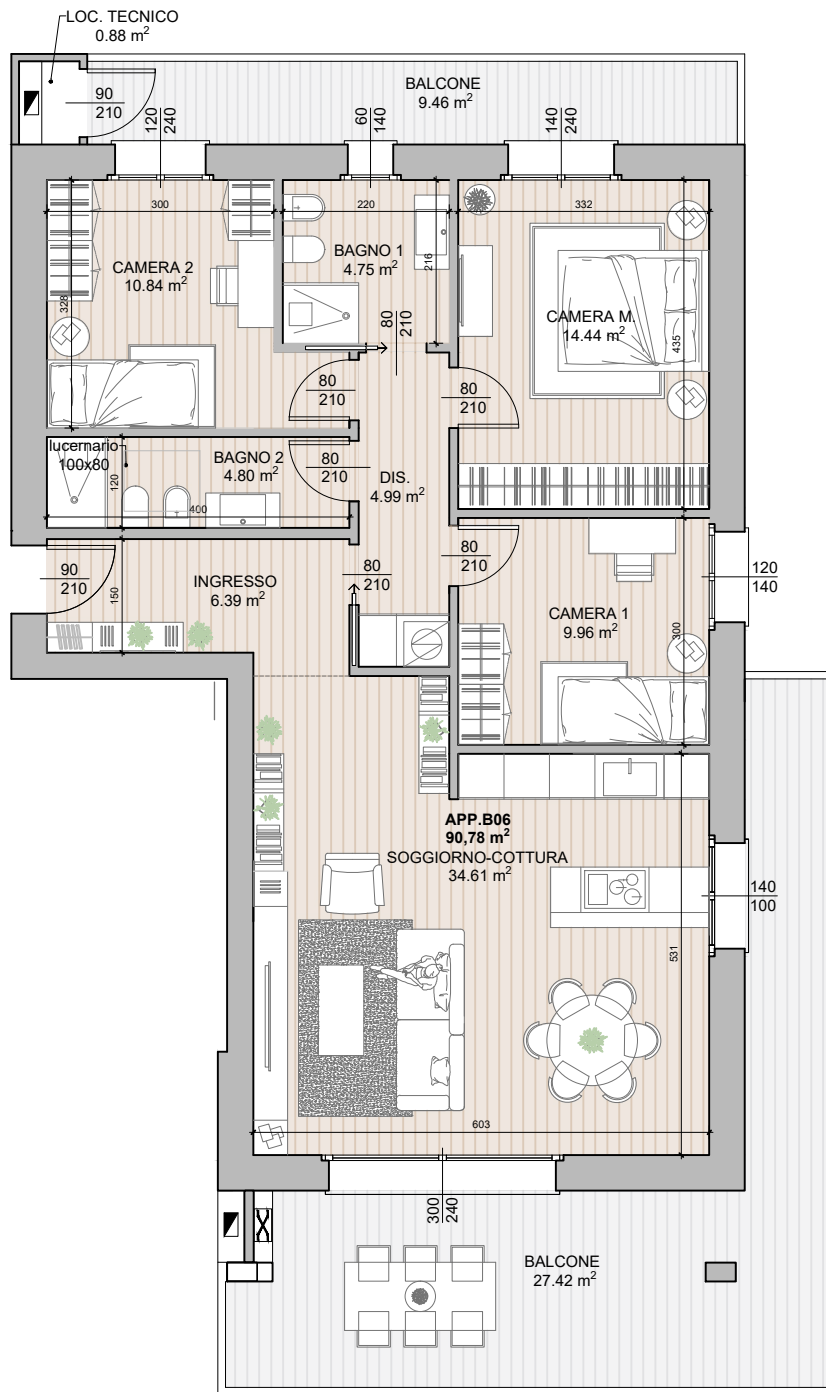


 153.76 mq

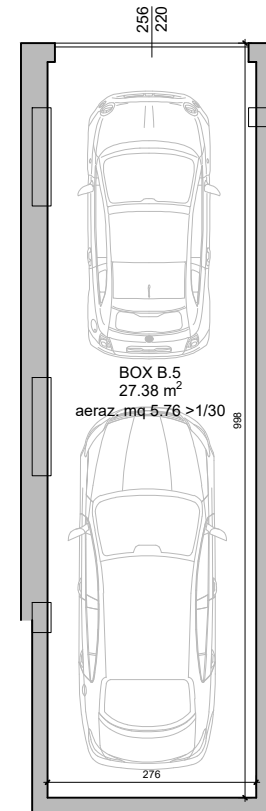
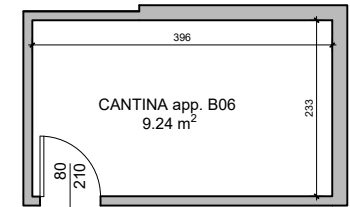
 2

 2

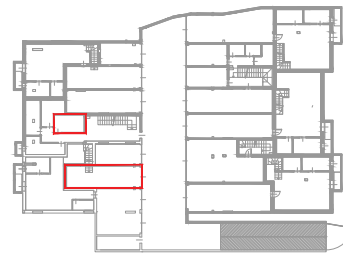
S.U. DI PROGETTO	
Soggiorno/Cottura	34.61 mq
Ingresso	6.39 mq
Disimpegno	4.99 mq
Bagno	4.75 mq
Camera M	14.44 mq
Camera 1	9.96 mq
Camera 2	10.84 mq
Bagno 2	4.80 mq
Balcone	36.88 mq
Cantina	9.24 mq
Loc. tecnico	0.88 mq



PIANO PRIMO - appartamento B6



PIANO INTERRATO



PLANIMETRIA GENERALE - Piano interrato



PLANIMETRIA GENERALE - Piano primo

EDILCOLOMBELLI SRL
Il tuo abitare. La nostra passione.

Axe
ISO 9001
AZIENDA CERTIFICATA ISO 9001
CERTIFICATO N° IT22-32105A
CQOP **SOA**
GOVERNO QUALITÀ ED OMBRE PUBBLICHE

www.edilcolombelli.it
info@edilcolombelli.it
Grassobbio, via Roma 8
035.04.02.809
PIVA: 02524340169