

Mono PERC 210mm 232 Cells

## TH(350-370)PM6-39SB Full Black

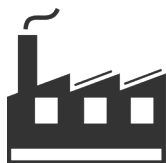
350/355/360/365/370 WP



### APPLICATIONS >>



On-grid residential  
roof-tops



On-grid commercial/  
industrial roof-tops



### Better appearance

- Full-black tone makes the modules blend perfectly with the building roof, ideal for residential roofs and BIPVs
- Cleaner and more aesthetic than traditional modules and complements your home's architectural style
- The new layout design is uniform overall, and the vision is extremely beautiful



### High customer value

- Lower LCOE (Levelized Cost Of Energy), reduced BOS (Balance Of System) cost, shorter payback time
- Lower guaranteed first year and annual degradation
- Designed for compatibility with existing mainstream system components
- Higher return on Investment



### High energy yield

- Excellent IAM (Incident Angle Modifier) and low irradiation performance, validated by 3rd party certifications
- The unique design provides optimized energy production under inter-row shading conditions



### High reliability

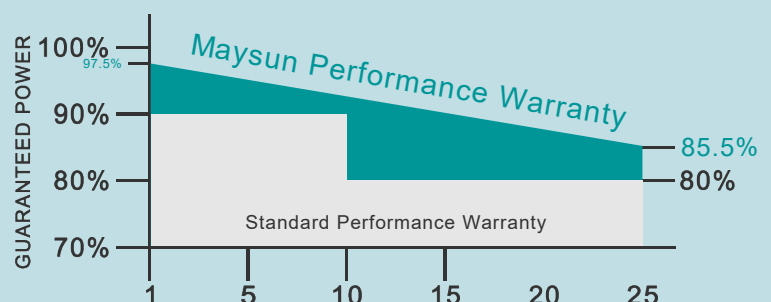
- Minimized micro-cracks with innovative non-destructive cutting technology
- Ensured PID resistance through cell process and module material control
- Resistant to harsh environments such as salt, ammonia, sand, high temperature and high humidity areas
- Mechanical performance up to 5400 Pa positive load and 2400 Pa negative load
- Class-C fire safety test passed

MAXIMUM EFFICIENCY

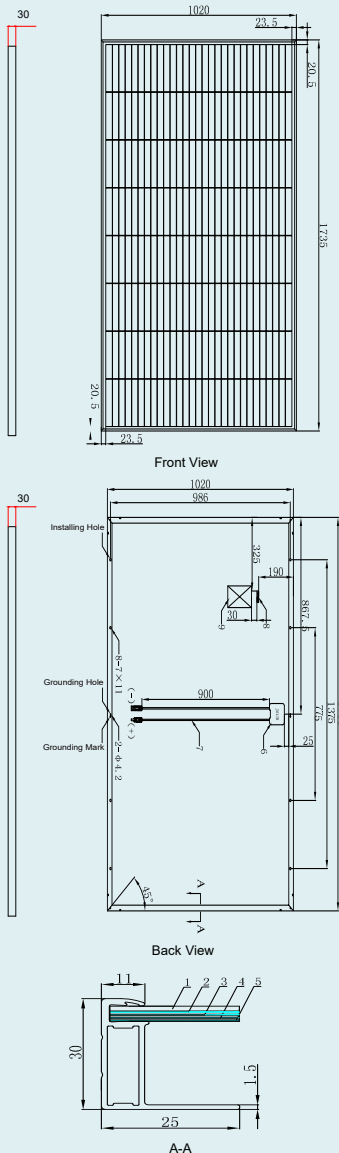
20.9%

POSITIVE POWER  
TOLERANCE

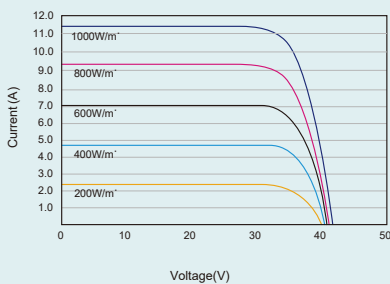
0 ~ +5W



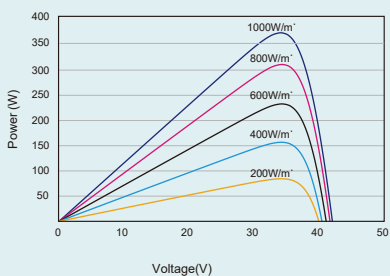
### DIMENSIONS OF PV MODULE(mm)



### I-V CURVES OF PV MODULE(360W)



### P-V CURVES OF PV MODULE(360W)



### ELECTRICAL DATA (STC)

Peak Power Watts- $P_{MAX}$ (Wp)*	350	355	360	365	370	
Power Tolerance- $P_{MAX}$ (W)	0 ~ +5					
Maximum Power Voltage- $V_{MPP}$ (V)	32.35	32.55	32.76	32.97	33.17	
Maximum Power Current- $I_{MPP}$ (A)	10.82	10.90	10.99	11.08	11.16	
Open Circuit Voltage- $V_{OC}$ (V)	38.15	38.35	38.55	38.75	38.95	
Short Circuit Current- $I_{SC}$ (A)	11.52	11.59	11.65	11.71	11.77	
Module Efficiency $\eta_m$ (%)	19.8	20.1	20.4	20.6	20.9	

STC: Irradiance 1000W/m², Cell Temperature 25°C,  
Air Mass AM1.5. \*Measuring tolerance:  $\pm 3\%$ .

### ELECTRICAL DATA (NOCT)

Maximum Power- $P_{MAX}$ (Wp)	265	268	272	275	280	
Maximum Power Voltage- $V_{MPP}$ (V)	30.31	30.5	30.7	30.9	31.08	
Maximum Power Current- $I_{MPP}$ (A)	8.71	8.77	8.84	8.92	8.98	
Open Circuit Voltage- $V_{OC}$ (V)	35.9	36.09	36.27	36.46	36.35	
Short Circuit Current- $I_{SC}$ (A)	9.27	9.33	9.38	9.43	9.47	

NOCT: Irradiance at 800W/m², Ambient Temperature 20°C, Wind Speed 1m/s.

### MECHANICAL DATA

Solar Cells	Monocrystalline
Cell Orientation	232 cells
Module Dimensions	1735×1020×30 mm (68.31×40.16×1.18 inches)
Weight	19.5 kg
Glass	3.2 mm (0.13 inches), High Transmission, AR Coated Heat Strengthened Glass
Encapsulant Material	EVA/POE
Backsheet	Black
Frame	30 mm(1.18 inches) Black, anodized aluminium alloy
J-Box	IP 68 rated (3 bypass diodes)
Cables	Photovoltaic Technology Cable 4.0mm² (0.006 inches²) Portrait: N 900mm/P 900mm(35.43/35.43 inches) Length can be customized
Connector	MC4

\*Please refer to regional datasheet for specified connector.

### TEMPERATURE RATINGS

NOCT(Nominal Operating Cell Temperature)	43°C ( $\pm 2^\circ\text{C}$ )
Temperature Coe <sup>o</sup> cient of $P_{MAX}$	- 0.34%/°C
Temperature Coe <sup>o</sup> cient of $V_{OC}$	- 0.25%/°C
Temperature Coe <sup>o</sup> cient of $I_{SC}$	0.04%/°C

### WARRANTY

15 year Product Workmanship Warranty
25 year Power Warranty
2.5% first year degradation
0.5% Annual Power Attenuation

\*Please refer to product warranty for details.

### MAXIMUM RATINGS

Operational Temperature	- 40 ~ +85°C
Maximum System Voltage	1500V DC (IEC)
	1000V DC (IEC)
Max Series Fuse Rating	20A

### PACKAGING CONFIGURATION

Modules per pallet: 37 pieces
Modules per 40' container: 1040 pieces



CAUTION: READ SAFETY AND INSTALLATION INSTRUCTIONS BEFORE USING THE PRODUCT.

© 2021 Maysun Solar Co., Ltd. All rights reserved. Specifications included in this datasheet are subject to change without notice.

Website: [www.maysunsolar.com](http://www.maysunsolar.com)