


GRASSOBBIO
Via Anna Costanza Baldry

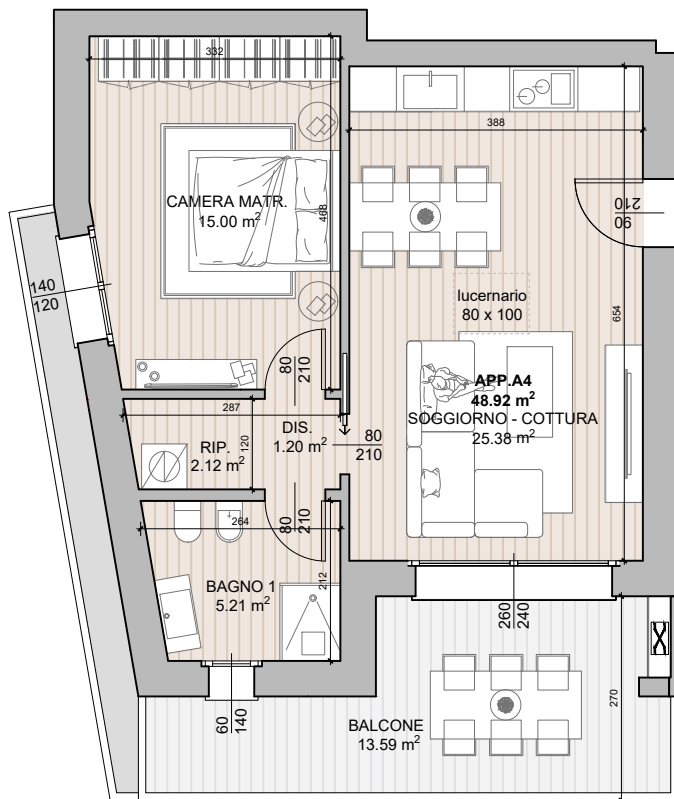
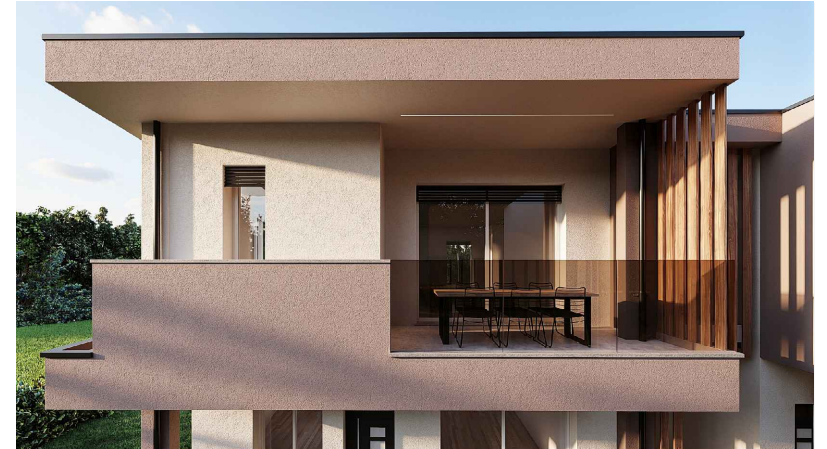
RESIDENZA GAIA
APPARTAMENTO A4
BILOCALE - PIANO PRIMO

 73.82 mq

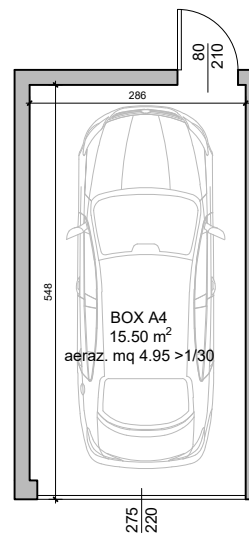
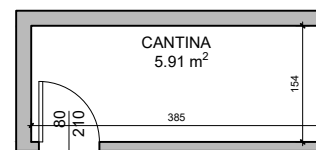
 1

 1

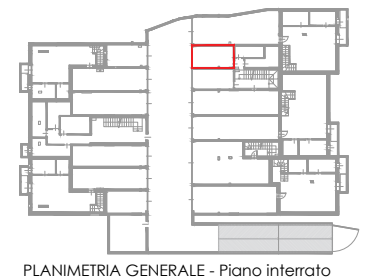
| S.U. DI PROGETTO | |
|-------------------|----------|
| Soggiorno/Cottura | 25.38 mq |
| Disimpegno | 1.20 mq |
| Bagno 1 | 5.21 mq |
| Rip. | 2.12 mq |
| Camera matr. | 15.00 mq |
| Balcone | 13.59 mq |
| Cantina | 5.91 mq |



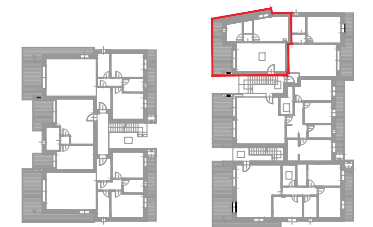
PIANO PRIMO - appartamento A4



PIANO INTERRATO



PLANIMETRIA GENERALE - Piano interrato



PLANIMETRIA GENERALE - Piano primo


EDILCOLOMBELLI SRL
Il tuo abitare. La nostra passione.

Axe
MANAGEMENT SYSTEMS
ISO 9001
AZIENDA CERTIFICATA ISO 9001
CERTIFICATO N° IT22-32103A
CQOP **SOA**
CONTRATTI QUALITÀ ED OMBRE PUBBLICHE

www.edilcolombelli.it
info@edilcolombelli.it
Grassobbio, via Roma 8
035.04.02.809
PIVA: 02524340169