



ACKNOWLEDGED BY



UNITED NATIONS
UNIVERSITY



RCE Graz-Styria

REGIONAL CENTRE OF EXPERTISE
Education for Sustainable Development

KARL-FRANZENS-UNIVERSITÄT GRAZ
UNIVERSITY OF GRAZ



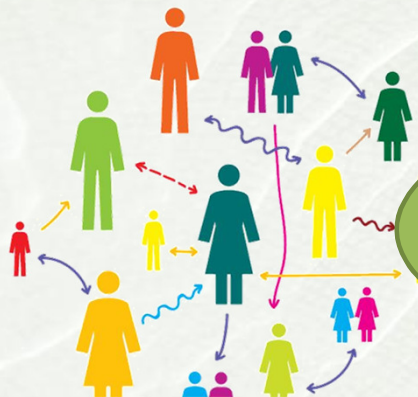
How to set up and run a successful lab in your city

Mario Diethart & Thomas Höflechner | Karl-Franzens-University Graz | 18.10.2018

'Each of us can make a difference, together we can make change.'



- Cities are key players for **sustainable development**
 - Growing complexity and rapid change dynamics pose a serious **challenge** to urban areas
 - **Resilience** of cities strongly depends on how **urban stakeholders** are able to deal with disturbances or threats
- Need for new forms of **urban governance** and planning



Governance processes promote the interaction between state, civil society and economy to work out solutions together, which are dynamic, needs- and goal-oriented, based on a broad consensus and hence sustainable. (Grunwald and Kopfmüller, 2012; UNDP, 2014)



Science

observes
analyzes environment and
recognizes connections and
interrelations



scientific knowledge provides
new possibilities of action

criticizes/deconstructs assumptions
(climate, economy etc.)



Society/Politics

acts/takes decisions



supports specific research

generates scientific knowledge
(especially in enterprises)





CITY LABS

DESIGN LABS

LIVING LABS

CHANGE LABS

MOBILITY LABS

IMPACT LABS

MAKERSPACES/FAB LABS

INNOVATION LABS

POLICY LABS

GOV LABS

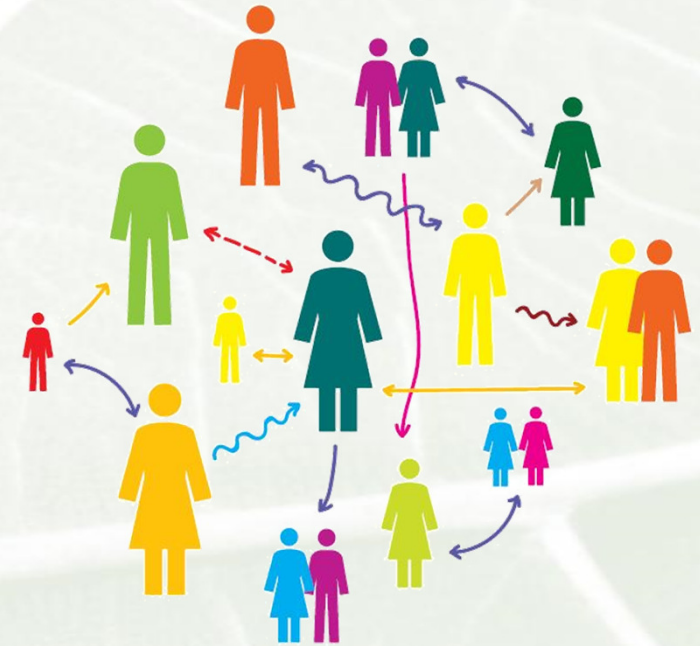
LAB-LIKE INITIATIVES

What is it about?

- ... a laboratory under **real-time conditions** ...
- ... often in the context of **sustainability** ...
- ... improves ability to **adapt to changes** (resilience) ...
- ... deals with **practical implementations** ...
- ... makes use and integrates **diversity** and **creativity** of a city ...
- ... enables **learning** and **experimenting** ...
- ... enables elaborating on **joint solutions** ...



- **Physical or non-physical spaces,** in which diverse **actors collaborate** to find solutions to **societal problems**
- **Experiments** in real-life-conditions



timely limited



goals

transferability of outcomes



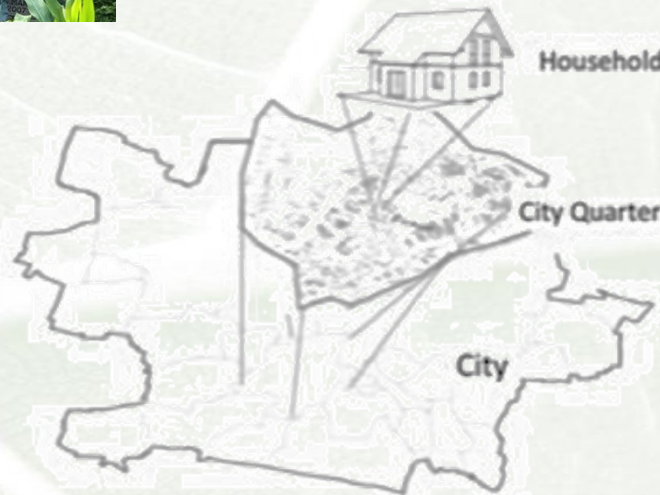
Household level (Living Labs)

- Users participate actively in innovation process
- Focus on new technologies and intervention strategies



City level (City Labs)

- Consideration of large-scale processes
- Consideration of effects of politics, identity, infrastructure (mobility, recreation, energy)
- Concentration on single functions (e.g. mobility, housing, nutrition)
- **Public-Private-People-Partnerships**



District level

- social interaction
- cultural identity
- Social diffusion processes



CITY LABS

DESIGN LABS

LIVING LABS

CHANGE LABS

MOBILITY LABS

IMPACT LABS

MAKERSPACES/FAB LABS

INNOVATION LABS

POLICY LABS

GOV LABS

LAB-LIKE INITIATIVES

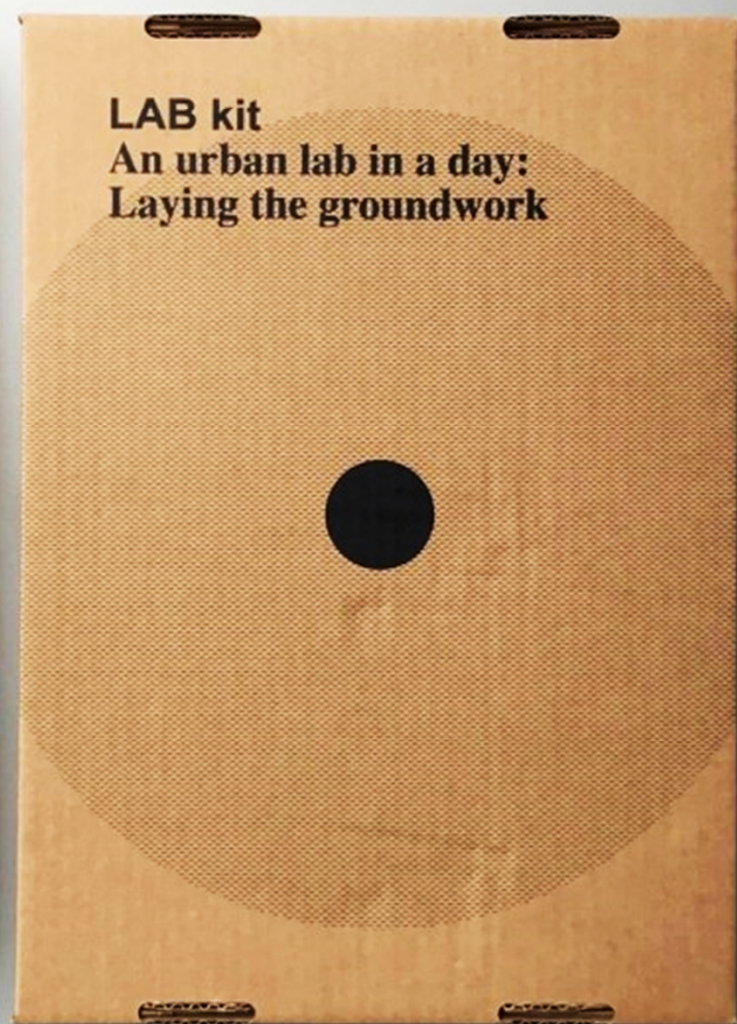


www.urbanexp.eu



www.smarterlabs.eu





LAB kit An urban lab in a day: Laying the groundwork

1 LAYOUT

First things first — 14 important questions to ask yourselves

LAB kit An urban lab in a day: Laying the groundwork

2 ASSEMBLE

Next — How do you plan to organise things?

LAB kit An urban lab in a day: Laying the groundwork

3 BOOST

Finally — Which next steps do you have in mind for your urban lab?

Now that you have a basic outline of the type of urban lab you want and how you plan to run it, let's give your efforts a final boost. Use the timelines below to create a more detailed overview of practical steps you plan to undertake in the coming period.

Think about activities, events, milestones that you plan or hope to achieve in the coming year(s) and lay them out on the thematic timelines below. See below for a short snippet of each timeline. Feel free to add an extra thematic timeline of your own in case necessary. By the way, you might want to use post-its to keep it easy to shuffle things around while you discuss.

COMMUNITY DEVELOPMENT
activities related to building, growing and supporting (etc.) the community of participants involved in your lab's activities (workshops, pilots, experiments, etc.)

PILOTS & EXPERIMENTS
activities related to the setup, organisation and facilitation (etc.) of pilots and experiments run by the lab's participants

EXTERNAL COMMUNICATION
activities related to the communication between the lab and the outside world (those not directly participating in or active in running the lab)

KNOWLEDGE MANAGEMENT
activities related to the creation, documentation and sharing of experiences, insights and knowledge gained throughout the lab's lifetime (written and across pilots/experiments but also in more general terms)

ORGANISATIONAL STRUCTURING
activities related to the structuring and evolution of the lab as an organisation within and beyond the municipal organisation or other organisations involved

LEARNING
activities related to active learning, monitoring and evaluation

COMMUNITY
DEVELOPMENT

PILOTS
& EXPERIMENTS

LAB kit An urban lab in a day: Laying the groundwork

A short manual

Laying the groundwork of a lab

- **What** is the **aim** of the lab?
Clear mission/objective or rather open?
- **Who** are the **actors** in the lab?
City as main actor or partner? Diversity?
- **Where** is the lab **positioned**?
Close to the city? Hybrid position?
- **How** is the lab **organized**?
Roles: initiator, supporter, leader, facilitator, partner, participants, steering team



Wrapping up

- Do you still have **doubts** to set up an urban lab?
- Could you imagine to **create your own lab**?
- What did you **learn** from others?
- Which **valuable lesson** do you take home?
- ...





Thank you!

Mario Diethart, MSc | Dr. Thomas Höflechner

RCE Graz-Styria – Regional Centre of Expertise
Education for Sustainable Development
Karl-Franzens-University Graz
Attemsgasse 11, 8010 Graz
rce.uni-graz.at