

IntellSense S1

SMART WMS ECO SENSOR SHOWER



Hygiene Flush



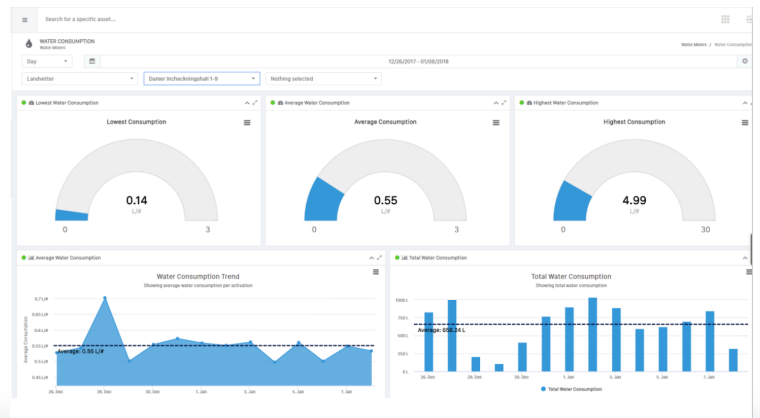
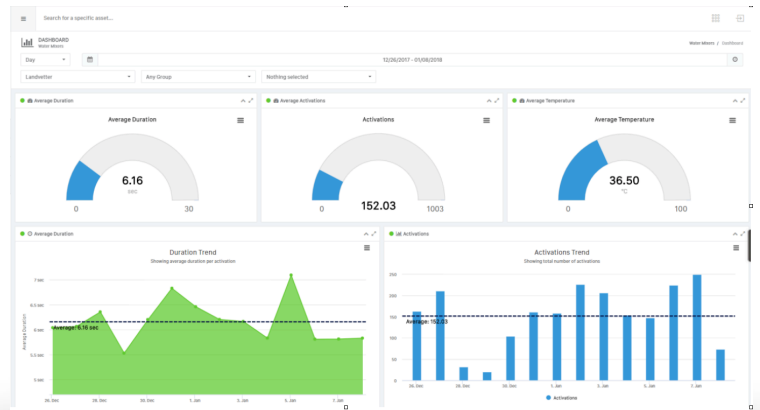
LegioSafe



Safe Touch



Tronic wms



Key Features

Thermostatic function, with adjustable temperature	Equipped with system for thermal disinfection against legionella
Mains operation (excl. transformer). Incl. AC adapter and 10m extension cable	IP class sensor, IP67
Connection at the back. Connection PEX 16 included	Approved non-return valves, EN-Standard EN1717
Solenoid valve, shut-off valve and electronics integrated in the shower head	Programmable rinsing time from 10 – 60seconds
Programmable start button. Rinsing time from 10–60 seconds, (30 seconds is the factory preset)	Selection of activation type: <ul style="list-style-type: none"> - Saving mode, set time, always flush at the same time, factory preset mode - Normal, rinsing time is extended if you press again before it stops - Switching mode, set time, reactivation interrupts flushing
Flush Timeout - safety shut-off to prevent flooding, maximum of 5 minutes	Adjustable hygiene flushing, interval and rinsing time (in order to prevent stagnant water)
Jet angle adjustable +/-5°	Logging of all flushing with point of time, water consumption and temperature for individual mixer or group of mixers (minimum, maximum and average values)
Flow limiter 9 l/min	Built-in temperature measurements of mixed water temperature
Can be turned off by solenoid valve (eg. for cleaning)	Programmable temperature stop, the mixer will turn off directly at set maximum temperature
Low power consumption - long life	Initiate hot water rinsing



0800 368 8815



info@h2oiq.co.uk



www.h2oiq.co.uk