


GRASSOBBIO
Via Anna Costanza Baldry

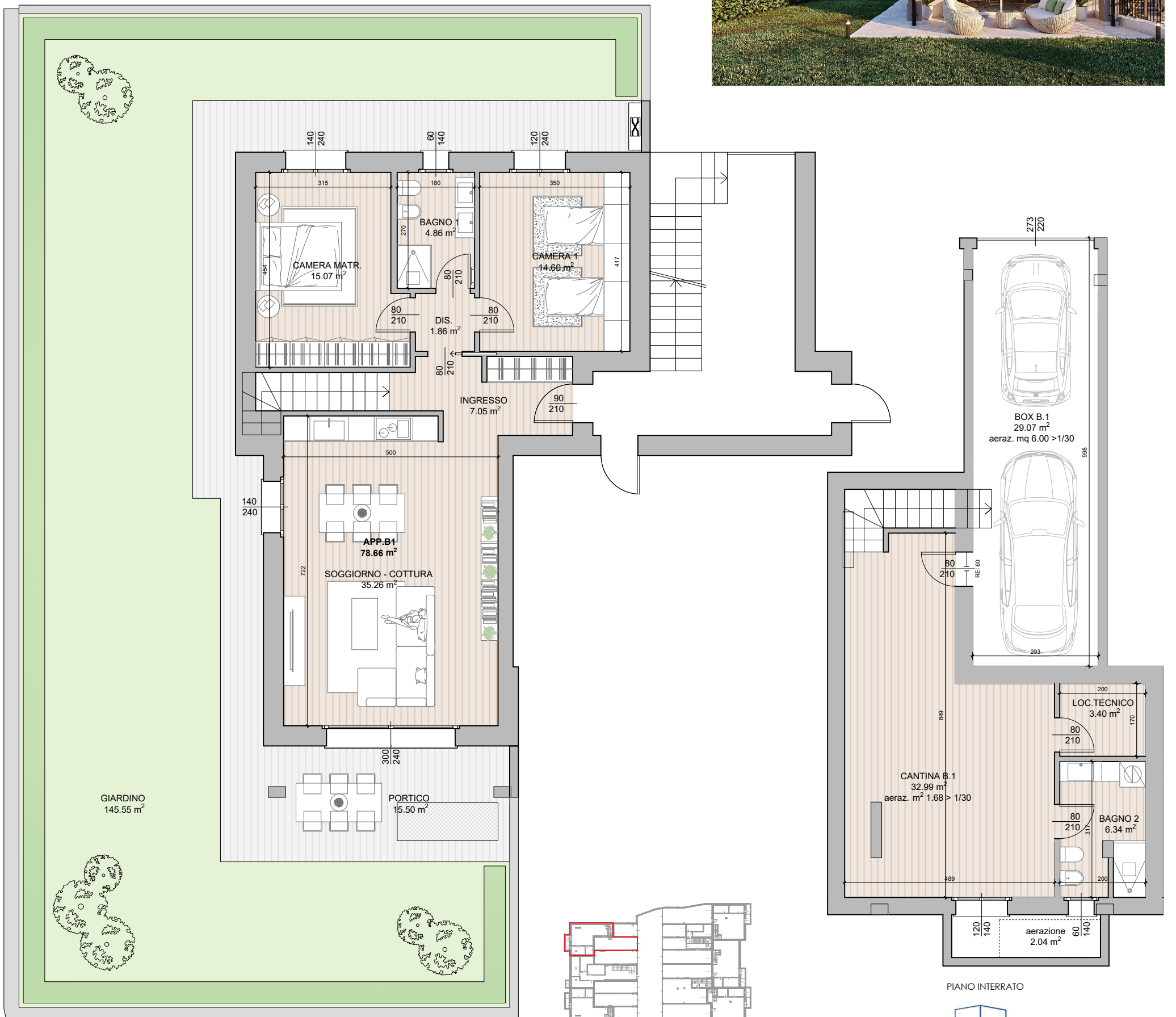
RESIDENZA GAIA
APPARTAMENTO B1
TRILOCALE - PIANO TERRA

 185.09 mq

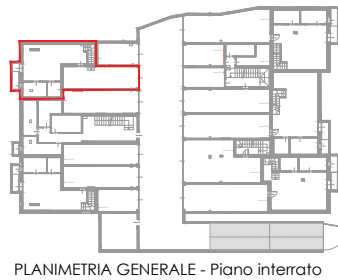
 2

 2

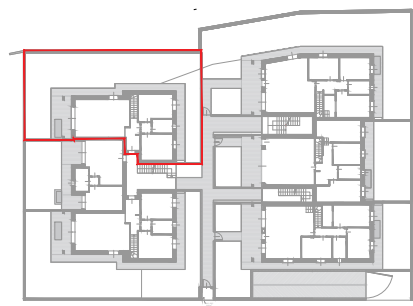
S.U. DI PROGETTO	
Soggiorno/Cottura	78.66 mq
Ingresso	7.05 mq
Disimpegno	1.86 mq
Bagno 1	4.86 mq
Camera M	15.07 mq
Camera 1	14.59 mq
Portico	15.50 mq
Giardino	145.55 mq
Cantina	32.99 mq
Bagno 2	6.34 mq
Loc. tecnico	3.40 mq



PIANO TERRA - appartamento B1



PLANIMETRIA GENERALE - Piano interrato



PLANIMETRIA GENERALE - Piano terra


EDILCOLOMBELLI SRL
Il tuo abitare. La nostra passione.


AZIENDA CERTIFICATA ISO 9001
CERTIFICATO N° IT22-32105A


www.edilcolombelli.it
info@edilcolombelli.it
Grassobbio, via Roma 8
035.04.02.809
PIVA: 02524340169