

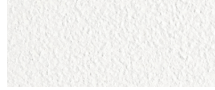
PIANO

Piano-2A Counter Stool

FRAME



Asteroid Powdercoat

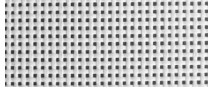


White Powdercoat

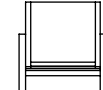
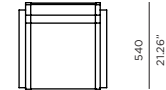
SEAT



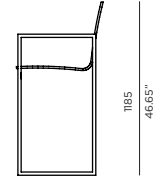
Silver Batyline



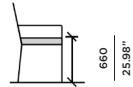
White Batyline



540
21.26"



1185
46.65"



660
25.98"

SPECIAL FEATURES



PROTECTIVE COVER

DESCRIPTION:

The Piano collection is a hallmark of the Harbour brand. Thick, durable, and modern, Piano provides the perfect mix of toughness and style. With the option of marine grade vinyl cushions, along with the Harbour's signature powder coated frames, and batyline mesh, Piano is the perfect compliment to poolside dining and entertainment in the sun

PROTECTIVE COVERS:

Protect your investment with water-repellent Sea-Sprae® fabric; protective backside coating, UV resistant.

SHIPPING AND DELIVERY:

Stock frames and stock cushions delivered in 1-3 weeks.
Stock frames with COM cushions delivered in 3-6 weeks.
Custom Orders delivered in 10-14 weeks.

WARRANTY:

FRAMES: 5 limited warranty on structural integrity.
MATERIALS: 2 year limited warranty.

TECHNICAL INFORMATION

POWDER COATED ALUMINIUM:
Asko Nobel® handcrafted, powder coated, rust-proof aluminium Frame, reinforced signature connection points.

SERGE FERRARI BATYLINE® MESH:
Light diffusing, UV and mold resistant, PVC coated.

Net Weight: 8 kg / 17.6 lb