

REQUIREMENTS FOR COMPLETING SIMULATION OF A SPACE AND PROVIDING BASELINE QUOTE

Ideal List of Information to be Received from Customer by COLighting Teams to Process Simulation and Quote for a Customer Having a **COMMERCIAL OFFICE TYPE SPACE**:

- **AutoCAD (*.dwg) File** of the Room/Area/Space
- **Lighting Plan/Scheme** for current Lighting Fixtures in the Room/Area/Space
- **Pictures or Video** of the Room/Area/Space
- **Height** from the Floor to the Bottom of the Current Lighting Fixtures
- **Height** of Interior Elements (Tables, Furniture, Machinery, Shelves, etc.) within the Room/Area/Space
- **Manufacturer and Model Number** of the Current Lighting Fixtures

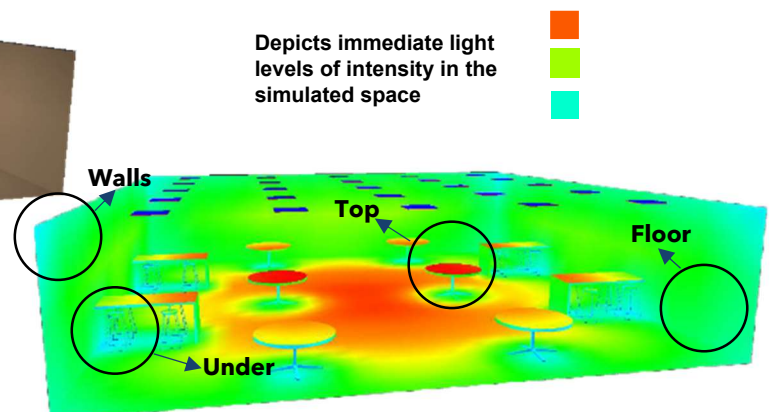
Minimum List of Information to be Received from Customer by COLighting Teams to Process Simulation and Quote for a Customer Having a **COMMERCIAL OFFICE TYPE SPACE**:

- **PDF, Vizio, or Other** Diagram of the Room/Area/Space
- **Pictures or Video** of the Room/Area/Space
- **Height** from the Floor to the Bottom of the Current Lighting Fixtures
- **Height** of Interior Elements (Tables, Furniture, Machinery, Shelves, etc.) within the Room/Area/Space
- **NICE TO HAVE: Manufacturer and Model Number** of the Current Lighting Fixtures

Example of Room/Area/Space Simulation



150 m² (1631 sqft) with 3m (10ft) height from floor to Bottom of current fixture



Goal is to have every corner of the room/area/space covered and continuously disinfected by deploying multiple fixtures

SPACE SIMULATION AND QUOTE REQUIREMENTS (CONTINUED)

Quotes for a **COMMERCIAL OFFICE TYPE SPACE** will be Based on Market Common Practice Assumptions Below **UNLESS** Customer Provides Customer Specific Inputs for any of the parameters shown below:

Simulation Data (Commercial Office Type Room/Area/Space)	Market Common Practice	Customer Specific
<i>Room/Area Height</i>	2.7m (12.14 sqft)	
<i>Fixtures Mounting Height</i>	2.7m (12.14 sqft)	
<i>Wall Color</i>	White	
<i>Floor Color</i>	White	
<i>Ceiling Color</i>	White	
<i>Photometric:</i>		
<i>Avg(lx)</i>	500m (1640 sqft)	
<i>Uniformity (Min/Avg)</i>	0.4m (1.3 sqft)	
<i>Uniformity (Min/Max)</i>	0.3m (1ft)	
<i>UGR(%)</i>	<25%	
<i>Max(lx)</i>	1200m (3937 sqft)	
<i>Min(lx)</i>	200m (656 sqft)	
<i>Current Fixture Power (If applicable)</i>	NA	

J.Protect Allegro and Presto Series Luminary/Light Fixture Models Considered for Simulation and Quotation:

