



St Paul's

PAROCHIAL CHURCH COUNCIL
OF
THE ECCLESIASTICAL PARISH OF ST PAUL, CAMBRIDGE

(Registered Charity No. 1132965)

**ANNUAL REPORT AND STATEMENT OF ACCOUNTS
FOR THE YEAR ENDED 31 DECEMBER 2025**

Aims and Purposes

St Paul's Parish Church Council (PCC) has the responsibility of co-operating with the Incumbent, in promoting in the ecclesiastical parish, the whole mission of the Church, pastoral, evangelistic, social, and ecumenical. St Paul's exists to proclaim the love of God in word and deed, in the context of its parochial church ministry in the Church of England. This is summarized best in the Anglican marks of mission ([Marks of Mission](#)).

During the course of 2025, the PCC has articulated more fully St Paul's Mission and Vision and has adopted two frameworks to support and enable its mission.

- The first is 'the Four Cs' – four areas, each with their own sub-committee chaired by a trustee, which relate to four aspects of the church's life: Congregation, Compassion, Culture and Commerce.¹
- The second is the 12 marks of a Christian life.² These marks of a Christian life help each individual on their faith journey. They also help the PCC ensure the breadth and depth of the ministry of the church.

St Paul's also has two operational committees: Finance and Maintenance.
Below is a fuller explanation of the 4cs and how they relate to the 12 marks.

The 'C' of Congregation'

Love the Lord your God, with all your heart, with all your soul, with all your mind and all your strength.' (Mark 12:30-31)

To learn together what it means to be God's people, shaped by the Christian story, in this time and in this place.

The Christian faith is not a solo religion, but one that is defined by gathering. The Greek word *ecclesia* (which we translate as the church), means the assembly, originally the assembly of citizens of the Greek state. To be a Christian is to be called into relationship with God, and with others. The church is not defined by its building, but by the people who regularly gather there to worship.

The Sunday gathering is, therefore, a focal point of the week, when the community in its diversity assembles around the Lord's Table: a sign of the abundant love of God poured out for us in Jesus. The Bible is read and the 'Word' is opened for us by a variety of preachers as we seek to become people who learn to discern God's word for our age. Children and young people are nurtured through Sunday groups and additional activities.

Christian discipleship is fed and nurtured not just through our Sunday gathering, but through mid-week prayer groups, study groups, and active service. The whole people of God are encouraged faithfully to live out their vocations inside and outside the church in varied ways and in many contexts.

Pastoral care is given and received by all members and the ministry of reconciliation, healing and prayer is offered. Ministry to those who are housebound, or who are in care homes, is also shared by

¹ As developed by HeartEdge, a network of churches supported by a team at St Martin-in-the-Fields.

² Open. Live. Challenge. Care. Share. Learn. Serve. Tell. Flourish. Worship. Pray. Notice.

the congregation. After a period of preparation, new members are welcomed through baptism and confirmation. Wedding and funeral ministry remains a core part of parish ministry. We are fortunate to have a church primary school where Christian learning is enabled, and children are involved in Christian worship.

Eco Church guides our life and decisions in relation to eco care, and we seek to build on our Silver Eco Award success.

The Inclusive Church Group works to ensure that we are an accessible and inclusive space for all.

The 'C' of Compassion

'God is love and all who live in love, live in God, and God lives in them.' (1 John 4:16)

To build community through a ministry of hospitality and service.

To challenge injustice and work for reconciliation.

To model kingdom values (love, generosity, gentleness, peace, forgiveness).

At St Paul's we aim to show God's compassionate love, especially to those who for whatever reason are marginalised, vulnerable, in need, or living with poor mental health, or physical disabilities. Responding to the call of God who has a bias to the poor, we seek to embody that bias in the programmes that we run. Such a bias to the poor is not about the church being a service provider, but rather a community that recognises its own vulnerability and is therefore able to sit with others in theirs'.³

The 'C' of Culture

'In the beginning was the Word, and the Word was with God, and the Word was God. He was in the beginning with God. All things came into being through him, and without him not one thing came into being. What has come into being in him was life, and the life was the light of all people. The light shines in the darkness, and the darkness did not overcome it.' (John 1: 1-5)

To enable creative engagement with the Christian story through drama, art, music, and other creative media.

The Christian story encompasses the whole of life, from the first act of creation to the gift of life everlasting in the new creation. Art has the potential, in all its forms, to be an expression of God's creative energy, mirrored in creation, whether its religious themes are explicit or not. Art at St Paul's seeks to be expansive and generative, enabling the widest range of people to encounter the story of God through the creative arts. In telling the Christian story through art, St Paul's aims to provide compelling moments of revelation and epiphany, as well as speaking to the range of human emotion and experience.

³ "If church communities could recognise their own vulnerability, conceiving of themselves as 'neighbour' rather than 'host', and instead of taking a service provider posture, adopting an attitude of mutual respect, then there may be hope to rebuild the relationship." From: <https://togetherforthecommongood.co.uk/uncategorised/rethinking-bias-to-the-poor>

The 'C' of Commerce

'Blessed are you, O Lord, the God of our ancestor Israel, for ever and ever. Yours, O Lord, are the greatness, the power, the glory, the victory, and the majesty; for all that is in the heavens and on the earth is yours; yours is the kingdom, O Lord, and you are exalted as head above all. Riches and honour come from you, and you rule over all. In your hand are power and might; and it is in your hand to make great and to give strength to all.' 1 Chronicles 29: 10-12

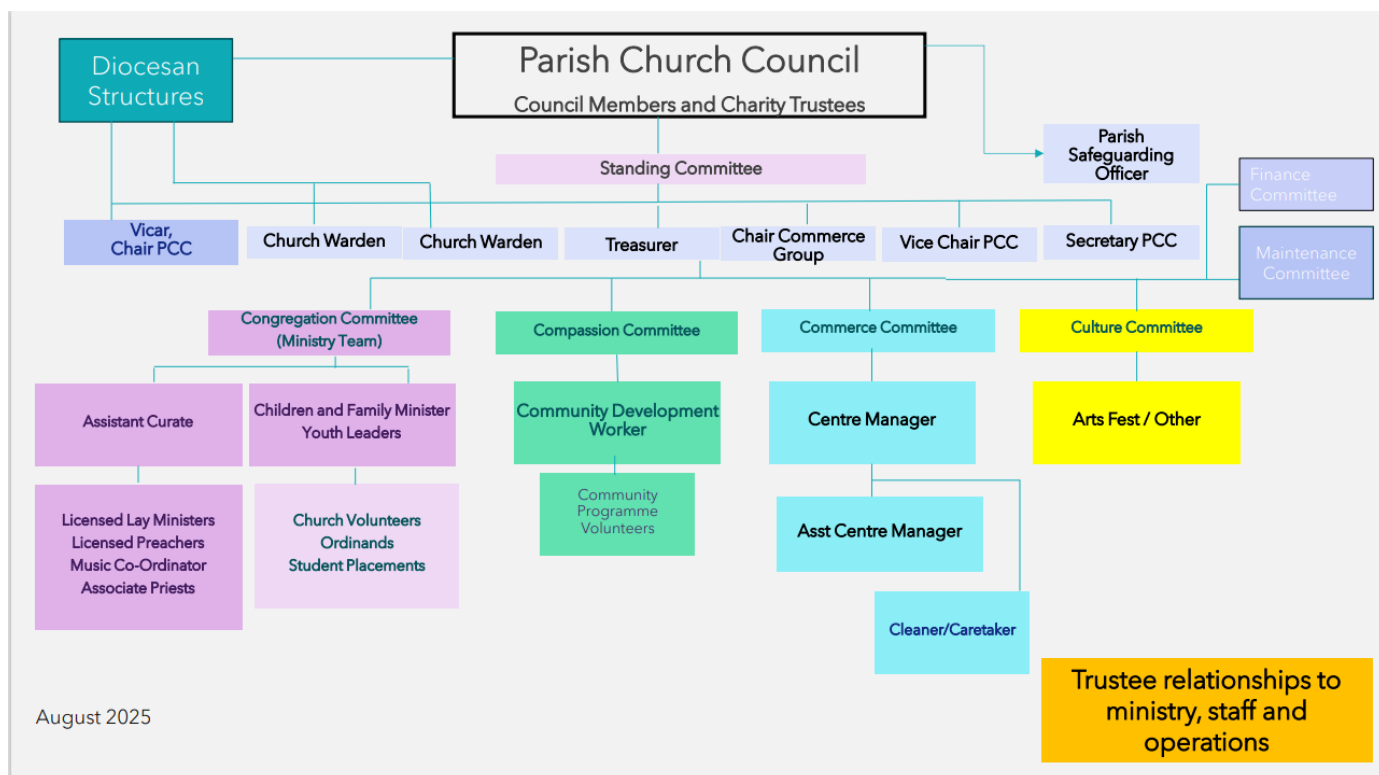
To be good stewards of all that we have inherited, working to ensure that our assets are used to enable the furtherance of God's kingdom.

In the Book of Common Prayer, at the offertory, the minister is invited to say the words, 'All things come from you, and of your own do we give you' (1 Chr 10:14). In so doing we are reminded that all of Christian life is marked by gift and thankfulness. Christian communities can often be nervous talking about money, or about being engaged in business. There is a sense that somehow all money is corrupted. The Bible is clear that *love* of money is the root of many evils, and in our commercial operations we must always be alert to the temptation to make money the goal or master. At St Paul's we engage in commerce in order to be good stewards of what has been entrusted to us by the faithful Christians who have served God in this place before us. And we do so in ways that reflect our Christian ethical commitments.

To this end, St Paul's many rooms are hired out 6 days a week (but not on Sundays, the Christian sabbath). The money from the lettings enables the PCC to employ centre staff to manage the business and operational needs of the church. The income from lettings also enables the PCC to meet the day-to-day running costs of St Paul's and at times to subsidize the parish share. Centre staff also support the other three aspects of the church life through enabling the church to be open each day, through operational management, grant fundraising, and marketing of St Paul's more generally.

Structure of the Organisation

The PCC has worked to clarify the structure of the organisation, in particular the relationship between trustees, committees and staff. Substantial work has been undertaken on policies, and this continues.



Summary of the Year’s Activities

During the course of the year the Parochial Church Council (PCC) met 6 times and also met for a PCC away day with a focus on clarifying the mission and vision, and strategic direction of St Paul’s. The members of the PCC are listed on page 20 of this Annual Report.

The PCC has taken regard of the Charity Commission’s guidance related to public benefit and they believe the PCC’s activities are in accordance with those guidelines.

Staff/Ministry Team

In June, Rev’d Dr Rebecca Applin Warner was ordained as a priest and continued her rich ministry as self-supporting curate. During 2025 we had students from both Ridley Hall and Westcott House on placement with us, these were Peter Amir, Brian Craig, Harri England, Laura MacFarlane and Phillis Njuguna. We also had Anne Carter on an extended LLM placement. Students on placement with us preach, lead services, run courses, are active in our groups and support our community outreach.

The PCC welcomed Jonathan Potts as the new Centre Manager in July 2025, followed by Emily Wright as Assistant Centre Manager (marketing) in November. They joined the existing staff team of Emma Caroe (Community Development Worker) and Anna Pile (Children and Family Worker). Sarah Collins, Joanne Koehler and Laura Swindell all moved on during the year.

Community Programme

One of the biggest developments of 2025 was the launch of our Fairbite Food Club, and with it a community café on Monday afternoons. Following several months of consultation, the PCC formally approved the proposal in July and the project launched at the beginning of November, delivered by a

large team of volunteers drawn from the previous foodbank session, church members, and foodbank users/Simple Supper guests. We averaged 12 shops a week in the last two months of 2025, although our membership list grew to nearly 40 people. Fairbite created an opportunity to get a new group of people involved and invested in a community project, people who were mostly living with multiple disadvantage. Some joined the volunteer team, including taking on leadership roles, while others started contributing significant amounts of help informally. Seeing people more regularly, rather than only at crisis point for foodbank help, enabled us to begin to build more meaningful relationships with this group.

Simple Supper, rebranded as a “free community meal”, attracted an increasingly diverse community over 2025. It continued to welcome people in very vulnerable situations including homelessness, addiction, and serious mental health issues – these included acute one-off visits where the team responded compassionately and signposted to further support where needed. Regular guests were of all ages and varying backgrounds and situations. Across the year, a culture of “with not for” developed and strengthened as guests increasingly contributed to set up and clear away alongside volunteers. The year concluded with a Christmas meal, held in the church hall for the first time to accommodate 55 people, and financially supported by a local café.

The Thursday Group saw significant development of social activities and trips. Alongside the longstanding summer seaside trip and Christmas pantomime, 6 more local trips included Anglesey Abbey, the zoo, and tenpin bowling, attracting a total of 49 unique people (not including families and others from the congregation attending the pantomime). After many years with us The Laundry Room Singers left for a new location, this meant we had the opportunity to develop a different Thursday morning programme. By June a full programme of weekly social activities at 11am before lunch had been developed, attended by a core group of 6-8 people a week: monthly walks in the Botanic Gardens continued with a new volunteer guide arriving in March, and a new member of the Thursday Group volunteered to lead crafts on a fortnightly basis.

Friday Lunch Club maintained a consistent and sociable atmosphere, though sadly some illnesses, care home moves, and deaths meant we lost a few people over the course of the year. Good Friday fish and chips and Christmas Lunch were highlights of the year both with over 50 people attending. 36 new volunteers joined over the course of 2025: 18 for Fairbite, 7 for Simple Supper, 4 for Thursday Group, 3 for Friday Lunch (including 2 lead cooks), 4 for both lunch clubs.

School

The PCC supports the work of our connected primary school: St Paul’s Church of England Primary School. The vicar is an ex-officio governor of the school and Dr Ros Thorburn (member of St Paul’s) became a trustee during the year. The whole school visited St Paul’s for their Easter Service, Year 6 took part in a Labyrinth Spirituality Day as part of their transition to secondary school, and we ran a meaningful spirituality day for all years in the school. Christingles were made with the whole school, with every child who wanted one able to make them and take one home.

The vicar led collective worship every week in term time, with support from Anna Pile. Anna and Imogen continued to run a weekly worship club at the school, with regular attendance of 20 -25 children.

The vicar is also a trustee of the Church Schools of Cambridge (CSOC), along with David Farrer who has served admirably as link trustee for St Paul's School for a number of years. CSOC supports Church of England schools in the city and makes grants for other churches for work in schools. It provides invaluable funds to St Paul's School.

External Links

The PCC has supported the church's continued participation and membership of Citizens' UK and in particular the founding of the Cambridge Chapter. The group successfully campaigned to see the retention of the Tiger Bus Pass that supports travel for young people. This group enables the church to take part in 'transforming unjust structures of society' a key plank in Anglican mission.

Finance Report

Attached to this Annual Report is a summary Statement of Financial Activities for the year, a full set of accounts and the Independent Examiner's Report on these accounts.

St Paul's has managed a portfolio of discrete funded projects during the year, and we extend a thank you to all our funders: The National Lottery Community Fund, Cambridge City Foodbank, Church Schools of Cambridge, and the Archbishops Council.

Total congregational giving increased almost 7% in 2025 which is a tremendous achievement, surpassing our target of matching our annual parish share. Although there was a small year-on-year decrease in overall Lettings income, this does not reflect current trends, and we continue to invest in and be grateful for a strong Lettings programme to support St Paul's mission.

A continued challenge as a congregation is to maintain the steady increase in our regular giving so that it keeps up with the inflationary increases in the cost of our parish share. Those that are able are invited to review their regular giving (such as by using the Parish Giving Scheme), and/or consider contributing more to the life of the church with their time. Such support will over the long run make our church less dependent on grant income (or drawing down from our finite legacy income), and more resilient in an inflationary economic environment.

St Paul's is indebted to the work of the whole finance team: Giulia Kistruck (bookkeeper), Keith Cowley (gift aid administrator) and David Farrer (advisor).

Reserves

The Church of England recommends that a PCC should adopt a formal reserves policy in its accounts and a broad recommendation for most charities is that they have unrestricted funds available to meet three months' future expenditure. In the light of the financial performance of the Centre in recent years, St Paul's has always maintained balances well in excess of any normal reserve requirement. Our current unrestricted funds balance continues to support this position.

STATEMENT OF FINANCIAL ACTIVITIES

	Notes	Unrestricted Funds		Restricted Funds		Total	Unrestricted Funds		Restricted Funds		Total
		Congregation	Centre	Congregation	Centre	Funds	Congregation	Centre	Congregation	Centre	Funds
		2025	2025	2025	2025	2025	2024	2024	2024	2024	2024
		£	£	£	£	£	£	£	£	£	
Income from											
Donations	2a	86,514	171	8,714	17,964	113,363	93,116		7,584	26,930	127,630
Charitable activities	2b	6,926	11,793			18,719	502	11,670			12,172
Other activities	2c		140,275			140,275	10,860	143,847			154,707
Investments	2d		5,659			5,659		3,551			3,551
Other	2e	6,268				6,268	8,070				8,070
Total Income		99,708	157,898	8,714	17,964	284,284	112,548	159,068	7,584	26,930	306,130
Expenditure on											
Raising funds	3a		364			364		547			547
Charitable activities	3b	98,857	151,796	20,680	22,804	294,137	77,602	175,255	33,220	400	286,477
Total Expenditure		98,857	152,160	20,680	22,804	294,501	77,602	175,802	33,220	400	287,024
Net Income/(Expenditure)		851	5,738	(11,966)	(4,840)	(10,217)	34,946	(16,734)	(25,636)	26,530	19,106
Transfers between funds	10	(2,688)	(3,242)	7,623	(1,693)		(20,403)	15,945	25,015	(20,557)	
Net movement in funds		(1,837)	2,496	(4,343)	(6,533)	(10,217)	14,543	(789)	(621)	5,973	19,106
Balances at 1 January		141,502	26,713	21,535	19,593	209,343	126,959	27,502	22,156	13,620	190,237
Balances at 31 December		139,665	29,209	17,192	13,060	199,126	141,502	26,713	21,535	19,593	209,343

All amounts relate to continuing activities. There were no recognised gains or losses other than those included above.

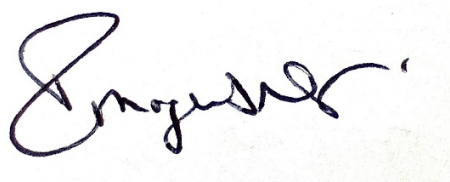
The notes on pages 10 to 20 form part of these financial statements

BALANCE SHEET

	Notes	Total Funds 2025 £	Total Funds 2024 £
Fixed Assets			
Tangible Fixed Assets	5	7,145	8,625
Current Assets			
Debtors	6	13,195	19,925
Cash at bank & in hand	7	194,364	195,516
		207,559	215,441
Creditors: amounts falling due within one year	8	(15,578)	(14,723)
Net Current Assets		191,981	200,718
Total Net Assets		199,126	209,343
Parish Funds			
General Reserve	10	79,162	64,731
Designated Funds	10	89,712	103,484
Total Unrestricted Funds		168,874	168,215
Restricted Funds	10	30,252	41,128
Total Funds		199,126	209,343

Approved by the Parochial Church Council and signed on its behalf:

Chair of Trustees, Rev'd Imogen Nay



17 April 2026

The notes on pages 10 to 20 form part of these financial statements

NOTES TO THE FINANCIAL ACCOUNTS

NOTE 1 ACCOUNTING POLICIES

The principal accounting policies adopted, judgements and key sources of estimation uncertainty in the financial statements are as follows.

Basis of Accounting

The financial statements have been prepared under the Charities Act 2011, Church Accounting Regulations 2016 and in accordance with the October 2019 second edition of the Charities Statement of Recommended Practice (the Charities SORP) and Financial Reporting Standard 102 (FRS 102) effective from 1 January 2019. The financial statements are drawn on the historical cost basis of accounting with items recognised at cost or transaction value unless otherwise stated in the relevant note(s) to the accounts.

The financial statements include all transaction, assets and liabilities for which the PCC is responsible in law. They do include the accounts of the church groups that owe affiliation to another body or those that are informal gatherings of church members. The PCC meets the definition of a public benefit entity under FRS 102.

Going Concern

There are no material uncertainties about the charity's ability to continue and accordingly accounts have been drawn up on a going concern basis.

Financial Instruments

The PCC has financial assets and financial liabilities of a kind that qualify as basic financial instruments. Basic financial instruments are initially recognised at transaction values and subsequently measured at their settlement value.

Income

Donations are included gross in the SOFA when the Charity is entitled to the income and has actually received the cash into its bank account and the value is thus measured reliably. Donations are treated as unrestricted unless specifically restricted by the donor. Income from grants is recognised gross when notification of approval is received and treated as unrestricted unless specifically restricted by the donor.

Expenditure

Expenditure is accrued as soon as a liability is considered probable and the amount of the obligation can be measured reliably. As the PCC is not registered for VAT, expenditure includes VAT where appropriate.

Tangible Fixed Assets

Consecrated and benefice property is not included in the accounts in accordance with S10 (2) (a) of the Charities Act 2011. This includes Church Silverware and historic furnishing. No value is placed on movable church furnishings held by the vicar and churchwardens on special trust for the PCC and which require a faculty for disposal are considered inalienable property.

Other fixtures and fittings: furniture and equipment costing more than £1,000, used within the church premises is depreciated on a straight-line basis over the estimated useful life of 10 years. Individual items costing less than £1,000 are written off when acquired.

Funds

Unrestricted funds are available for use at the discretion of the trustees in furtherance of the objects of the charity. Designated funds are unrestricted funds earmarked by the trustees for particular purposes. Restricted funds are subject to restrictions on their spending, imposed by the donor.

Parochial Church Council of the Ecclesiastical Parish of St Paul, Cambridge
Financial Statements for the year ended 31 December 2025

NOTE 2. INCOME

	Unrestricted Funds		Restricted Funds		Total	Unrestricted Funds		Restricted Funds		Total
	Congregation	Centre	Congregation	Centre	Funds	Congregation	Centre	Congregation	Centre	Funds
	2025	2025	2025	2025	2025	2024	2024	2024	2024	2024
	£	£	£	£	£	£	£	£	£	£
2a Donations & Legacies										
Tax efficient planned giving	44,782		6,394		51,176	39,546		7,584		47,130
Other planned giving	10,958				10,958	9,424				9,424
Collections	2,915				2,915	3,420				3,420
Gift days	10,968				10,968	7,578				7,578
Grants			2,320	17,964	20,284				26,930	26,930
Donations, appeals etc					-	4,500				4,500
Legacies	4,758				4,758	16,000				16,000
Gift aid recovered	12,133	171			12,304	12,648				12,648
	<u>86,514</u>	<u>171</u>	<u>8,714</u>	<u>17,964</u>	<u>113,363</u>	<u>93,116</u>	<u>-</u>	<u>7,584</u>	<u>26,930</u>	<u>127,630</u>
2b Charitable activities										
Statutory fees	1,311				1,311	502				502
Parish Weekend	5,615				5,615					-
Hospitality programme		10,152			10,152		10,889			10,889
Other events		1,641			1,641		781			781
	<u>6,926</u>	<u>11,793</u>	<u>-</u>	<u>-</u>	<u>18,719</u>	<u>502</u>	<u>11,670</u>	<u>-</u>	<u>-</u>	<u>12,172</u>
2c Other activities										
Room lettings		140,275			140,275		143,847			143,847
ArtsFest						10,860				10,860
	<u>-</u>	<u>140,275</u>	<u>-</u>	<u>-</u>	<u>140,275</u>	<u>10,860</u>	<u>143,847</u>	<u>-</u>	<u>-</u>	<u>154,707</u>
2d Investments										
Bank interest		5,659			5,659		3,551			3,551
	<u>-</u>	<u>5,659</u>	<u>-</u>	<u>-</u>	<u>5,659</u>	<u>-</u>	<u>3,551</u>	<u>-</u>	<u>-</u>	<u>3,551</u>
2e Other										
Feed-in Tariff payments	6,268				6,268	8,070				8,070
	<u>6,268</u>	<u>-</u>	<u>-</u>	<u>-</u>	<u>6,268</u>	<u>8,070</u>	<u>-</u>	<u>-</u>	<u>-</u>	<u>8,070</u>
Total	<u>99,708</u>	<u>157,898</u>	<u>8,714</u>	<u>17,964</u>	<u>284,284</u>	<u>112,548</u>	<u>159,068</u>	<u>7,584</u>	<u>26,930</u>	<u>306,130</u>

NOTE 3. EXPENDITURE

	Unrestricted Funds		Restricted Funds		Total	Unrestricted Funds		Restricted Funds		Total
	Congregation	Centre	Congregation	Centre	Funds	Congregation	Centre	Congregation	Centre	Funds
	2025	2025	2025	2025	2025	2024	2024	2024	2024	2024
	£	£	£	£	£	£	£	£	£	£
3a Raising Funds										
Advertising/Publicity		364			364		547			547
	-	364	-	-	364	-	547	-	-	547
3b Charitable Activities										
Church Activities										
Mission giving & donations	1,072		7,430		8,502	80		6,950		7,030
Parish Share	62,193	20,731			82,924	59,508	19,836			79,344
4 Staff costs	13,613	68,564	6,667	11,328	100,172		73,781	19,670		93,451
Clergy Expenses	1,851		287		2,138	2,420				2,420
ArtsFest/Parish weekend	5,248				5,248	9,531				9,531
Hospitality Programme	674			8,476	9,150	995	11			1,006
Church expenses										
Building maintenance	8,698	11,333	4,467	3,000	27,498		20,760			20,760
Cleaning and Caretaking		4,272			4,272		11,589			11,589
Insurance		7,159			7,159		7,149			7,149
Office/administration	807	9,133			9,940	373	8,311			8,684
Bank charges		192			192	468	384			852
Children's activities	1,526				1,526	1,313		1,112		2,425
Upkeep of service	2,568				2,568	2,129				2,129
Music	429				429	421		284		705
Computers/Equipment		6,215			6,215		5,436			5,436
Other running costs		2,606	1,829		4,435		1,181			1,181
Depreciation		1,480			1,480		1,908			1,908
Church utility bills		13,456			13,456		18,077			18,077
Hospitality	178	5,755			5,933	364	6,332			6,696
Major Capital Costs										
Major repairs to Church								5,604		5,604
PCC Governance Costs		900			900		500			500
	98,857	151,796	20,680	22,804	294,137	77,602	175,255	33,620	-	286,477
Total	98,857	152,160	20,680	22,804	294,501	77,602	175,802	33,620	-	287,024

NOTE 4. STAFF COSTS & REMUNERATION OF KEY MANAGEMENT PERSONNEL

	2025	2024
	£	£
Staff Costs		
Wages & Salaries	98,861	91,862
Employer's Pension Contribution	1,311	1,589
	<u>100,172</u>	<u>93,451</u>

The PCC consider its key management personnel comprise the Centre Manager and Trustees.

The number of employees was 8 in 2025 and 7 in 2024. This number does not include Trustees who are not allowed to receive remuneration for their duties.

No employee received benefits from employment (excluding employer pension contributions) of more than £60,000.

NOTE 5. TANGIBLE FIXED ASSETS

	Fixtures & Fittings	
	2025	2024
	£	£
Costs		
As at 1 January	64,929	64,929
Additions for year	-	-
As at 31 December	<u>64,929</u>	<u>64,929</u>
Depreciation		
As at 1 January	56,304	54,395
Charge for year	1,480	1,909
As at 31 December	<u>57,784</u>	<u>56,304</u>
Net Book Value		
As at 31 December	7,145	8,625

NOTE 6. DEBTORS

	2025	2024
	£	£
Gift Aid Recoverable	5,645	5,796
Other Debtors	6,254	14,129
Prepayments	1,296	
	<u>13,195</u>	<u>19,925</u>

NOTE 7. CASH and CASH EQUIVALENTS

Cash at Bank and in hand consisted of no-notice bank deposits at the bank and the investment company listed in Note 14 plus an imprest float held by CBR for salaries.

NOTE 8. CREDITORS – Amounts falling due within one year

	2025	2024
	£	£
Trade Creditors	(13,257)	(13,026)
Accruals & Sundry Creditors	(2,321)	(1,697)
	<u>(15,578)</u>	<u>(14,723)</u>

NOTE 9. ANALYSIS OF NET ASSETS BETWEEN FUNDS

	Tangible Fixed Assets	Debtors	Cash at Bank	Creditors within year	2025 Total
	£	£	£	£	£
Unrestricted Funds					
General Congregation		6,325	52,194	1,421	57,098
General Centre		6,870	29,351	14,157	22,064
Designated Funds					
Legacies			78,260		78,260
Electricity Feed in Tariff			3,940		3,940
Fixed assets	7,145				7,145
Weekend Away			367		367
	7,145	13,195	164,112	15,578	168,874
Restricted Funds					
Child Empowerment Uganda					
Divine Hope Foundation			214		214
Mission			280		280
Children and Youth					
CSOC Worship Club					
Organ			4,684		4,684
Refurbishment			43		43
Staff and Volunteers			6,828		6,828
Vicar's Discretionary			1,643		1,643
Community Musician			3,500		3,500
Cambridge City Foodbank			2,500		2,500
Cambridge City Fairbite			3,988		3,988
AFA Lottery Grant (Community Worker)			6,572		6,572
Font					
			30,252		30,252
	7,145	13,195	194,364	15,578	199,126

NOTE 10. FUNDS

	Balance at 1 January 2025	Incoming Resources	Resources Expended	Write off	Transfers	Balance at 31 Dec 2025
	£	£	£	£	£	£
Unrestricted Funds						
General Congregation	46,643	83,067	(71,298)		(1,314)	57,098
General Centre	18,088	157,898	(150,680)		(3,242)	22,064
	64,731	240,965	(221,978)		(4,556)	79,162
Designated Funds						
Legacies	88,489	4,758	(13,613)		(1,374)	78,260
Electricity Feed in Tariff	6,370	6,268	(8,698)			3,940
Fixed assets	8,625		(1,480)			7,145
Weekend Away		5,615	(5,248)			367
	103,484	16,641	(29,039)		(1,374)	89,712
Restricted Funds						
Child Empowerment Uganda	46	954	(1,000)			
Divine Hope Foundation	33	611	(430)			214
Mission	7	273	(6,000)		6,000	280
Children and Youth	4,552		(6,667)		2,115	
CSOC Worship Club		2,320	(1,579)		(741)	
Organ	4,696	248	(260)			4,684
Refurbishment/Building Repairs	1,468	495	(1,920)			43
Staff and Volunteers	6,765	63				6,828
Vicar's Discretionary	1,930		(287)			1,643
Community Musician		3,750	(250)			3,500
Cambridge City Foodbank		10,000	(7,500)			2,500
Cambridge City Fairbite		4,964	(976)			3,988
AFA Lottery Grant (Community Worker)	19,593		(11,328)		(1,693)	6,572
Font	2,038		(2,287)		249	
Church Decarbonisation Grant		3,000	(3,000)			
	41,128	26,678	(43,484)		5,930	30,252
TOTAL RESERVES	209,343	284,284	(294,501)	-	-	199,126

1. The PCC decided to transfer the surplus of the Centre Hospitality programme from General Centre to General Congregation Fund. In 2025 this was £4,686.

2. The PCC decided that 25% of the parish share is paid for from the General Centre Fund rather than the General Congregation Fund (this is shown in expenditure, not as a transfer). In 2025 this was £20,731.

3. All other transfers are mentioned in the following funds list

DESIGNATED FUNDS

LEGACY: Legacy donations are designated by the PCC for purposes to be decided. In 2025 £1,795 was transferred to the Children and Youth Fund and £421 was transferred from the CSOC Worship Club.

WEEKEND AWAY: These funds were to support the Church Weekend Away.

ELECTRICITY FIT: This fund records income from the Church's solar electricity feed-in-tariff. In 2025 £8,698 was used to install a new fire alarm system.

FIXED ASSETS: This designated fund is set to match the value of fixed assets.

RESTRICTED FUNDS

CHILD EMPOWERMENT UGANDA (CHEMU): Through donations to the Kate Farrer Foundation, this fund supported a small charity educating and supporting orphans in Uganda. ChemU ceased operations in 2025 and this fund has now been closed.

DIVINE HOPE: Through donations to the Kate Farrer Foundation, this fund supports a small charity supporting health clinics and education in Uganda

MISSION: This fund is used by St Paul's for mission & charitable giving. In 2025 a transfer of £6,000 was made from the General Congregation Fund to support Mission giving.

CHILDREN AND YOUTH: This fund supports children and youth work including a Children and Family Worker. In 2025 this fund received transfers of £1,795 from the Legacy Fund and £320 from the CSOC Worship Fund.

CSOC WORSHIP CLUB: This fund is made up of three grants from Church Schools of Cambridge awarded and spent in 2025: £1,000 for 'Our World, Our Eden' music and theatre project at St Paul's primary school; £1,000 to support the children's worship club; and £320 to support the church youth group.

ORGAN: This fund holds donations towards maintenance on the Church organ/piano when required.

REFURBISHMENT: Retained as a fund towards building works when required. In 2025 £1,920 was used for specialist duct cleaning in the lower hall kitchen.

STAFF AND VOLUNTEERS: To fund staff and volunteers working and volunteering for St Paul's.

VICAR'S DISCRETIONARY FUND (VDF): This fund support donations to charitable causes at the Vicar's discretion.

COMMUNITY MUSICIAN: This fund supports a musician who works for St Paul's with church & community events.

CAMBRIDGE CITY FOODBANK: This fund is a grant from Cambridge City Council to support with the costs of delivering community meals and Foodbank programme.

CAMBRIDGE CITY FAIRBITE: This fund is a partnership between Cambridge City Council and St Paul's to handle all income and costs related to the Fairbite programme which is a social supermarket hosted by St Paul's.

AFA LOTTERY GRANT (COMMUNITY WORKER): In 2024 St Paul's received a grant from the National Lottery Community Fund (Awards for All) to support the new Community Worker. In 2025 £1,693 was transferred to General Centre funds as a contribution towards the parish share.

FONT: This fund was set up to hold funds donated for the previous St Paul's pulpit to be restored as a font. In 2025 £249 was transferred from General Congregation funds to this fund.

DECARBONISATION GRANT: In 2025 St Paul's was awarded a £3,000 grant from the Archbishops Council through the Church Decarbonisation Grant Scheme. This was used to pay for the replacement of lights with LED lights in order to reduce St Paul's carbon emissions.

NOTE 11. Trustee Remuneration & Expenses

In 2025 Rev Dr Becky Warner was paid a fee of £1,000 for the planning and delivery of 'Our World, Our Eden' music and theatre project at St Paul's Primary School.

NOTE 12. Related Party Transactions

No donations from Trustees or Related Parties were provided with conditions which would, or might, require the charity to alter significantly the nature of its existing activities.

NOTE 13. Independent Examination Fees

In the year to 31 December 2025, £900 was accrued for the Independent Examination of the 2025 accounts by Staffords Accountants Ltd. No other assurance, tax advisory or financial services were provided and consequently, no other fees were paid.

NOTE 14. ADMINISTRATIVE INFORMATION

Charity Registration Number:	1132965
Registered Address:	St Paul's, Hills Road, Cambridge CB2 1JP
Banker	CAF Bank, West Malling, Sussex, ME19 4JQ
Investment Company	CCLA Investment Management, London, EC4R 3AB
Independent Examiner:	Staffords Accountants Ltd, Girton, Cambridge CB3 0QH

Trustees:	Rev Imogen Nay (Chair)
	Christina Barry
	Pete Bone
	Andrew Chaplin (Treasurer)
	Dr Jonathan Chaplin (Warden)
	Lucia Chaplin - resigned May 2025
	Liz Diamond (Warden) - resigned May 2025
	Professor Mark Elliot
	Helen Flynn
	Professor Andrew Gordon - appointed May 2025
	Dr Vicky Green – appointed September 2025
	Professor Jenny Mander
	Professor Robert McCorquodale - resigned September 2025
	Elisabeth von Rabenau
	Helen Robbins - resigned May 2025
	Marion Saunders - appointed May 2025
	Bryony Trill - resigned February 2025
	Rev Dr Becky Warner - appointed June 2025
	Jeremy Whitton Spriggs - appointed August 2025
	Joanne Wroe - resigned May 2025

INDEPENDENT EXAMINER'S REPORT FOR THE YEAR ENDED 31 DECEMBER 2025
TO THE PCC OF THE ECCLESIASTICAL PARISH OF ST PAUL, CAMBRIDGE

This report on the accounts of the PCC for the year ended 31 December 2025, which are set out on pages 2 to 14, is in respect of an examination carried out in accordance with the Church Accounting Regulations 2016 (the Regulations) and section 145 of the Charities Act 2011 (the Act).

RESPECTIVE RESPONSIBILITIES OF THE PCC AND THE EXAMINER

As members of the PCC you are responsible for the preparation of the Accounts; you consider that the Audit requirement of the Regulations and section 144 (2) of the Act do not apply. It is my responsibility to issue this report on those accounts in accordance with the terms of the Regulations.

BASIS OF INDEPENDENT EXAMINER'S REPORT

My examination was carried out in accordance with the General Directions given by the Charity Commissioners under section 145 (5) (b) of the Act and to be found in the Church Guidance, 2016 edition. The examination includes a review of the financial records kept by the PCC and a comparison of the accounts with those records. It also includes considering any unusual items or disclosures in the accounts, and seeking explanations from you as members of the PCC concerning any such matters. The procedures undertaken do not provide all the evidence that would be required in an audit, and consequently, I do not express an audit opinion on the view given in these accounts.

INDEPENDENT EXAMINER'S REPORT

In connection with my examination no matter has come to my attention:

(1) which gives me reasonable cause to believe that in any material respects the requirements

- to keep accounting records in accordance with section 130 of the Act: and
- to prepare accounts which compare with the accounting records and to comply with the accounting requirements of the Act

have not been met; or

(2) to which, in my opinion, attention should be drawn in order to enable a proper understanding of the accounts to be reached.

Matthew Pettifer FCA
Staffords Chartered Accountants
Unit 1, Cambridge House
Camboro Business Park
Oakington Road
Girton Cambridge CB3 0QH