



# ANTAI SOLAR

A brief introduction about Antaisolar





# RAISE A GREEN WORLD

— A dream never has been changed —

# Development History

2006-2008  
BUDDING

2009-2016  
THRIVING

2017-2022  
EXPLORING

ANTAI Aluminum corporation

Entered the PV module frame market

Entered the PV mounting system market

Started exportation to international markets

Entered Japanese and Australian markets

Opened Japan logistics center

Cumulative shipments reached 6GW

Philippines office established

- Entered solar tracker market
- Established Shanghai, Japan and Australia branches
- Brazil office established

- Opened a new production base
- Established Singapore branch
- Vietnam and Malaysia offices established

- Shanghai R&D Centre established
- Brand upgraded

- Established India branch
- Offices in Spain, Mexico and Chile established
- Opened Brazil logistics center

- Spanish R&D center established
- The second phase of the new factory put into operation
- Established Dutch and American branches

Cumulative shipments reached 25.4GW

# General Overview



Established in 2006



Manpower 800



120 persons  
R&D team



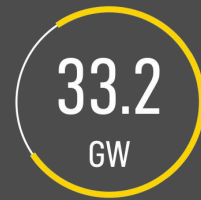
All-material, all-function, all-service  
products and solutions



Globalization and localization  
layout



Global supply chain  
system



Cumulative shipments  
reached 33.2 GW



Leading position in  
Japan market



Leading position in Australia  
distribution market



Leading position in Chile  
distribution market,  
Vietnam, Malaysia, Singapore  
and other markets

# Global Layout

## R&D Centers

Shanghai Xiamen  
Zhangzhou Madrid

## Production Bases

Fujian Jiangsu  
Tianjin Indonesia  
India Brazil

## Logistic Center

Japan  
Australia

## Branches

USA Japan  
Netherlands Chile  
India Singapore  
Shanghai

## Offices

Mexico Brazil Thailand  
Vietnam Philippines  
Malaysia Argentina  
Spain Poland Jordan  
Dubai Korea

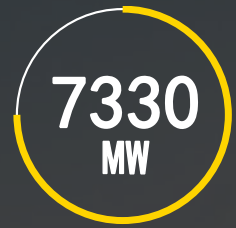


## Global Headquarter

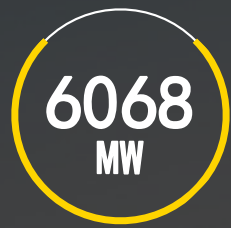
Xiamen, China



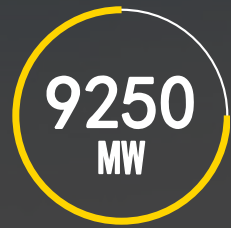
## Global Shipment



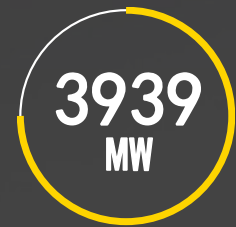
Japan



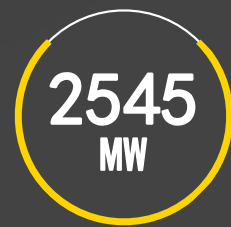
Australia



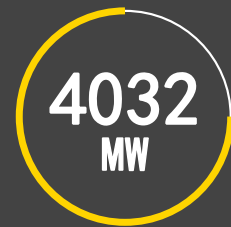
China



South East Asia



Latin America



Others

(Europe, Middle East Africa,  
Middle West Asia, South Korean, ect.)

# 33.2

# GW

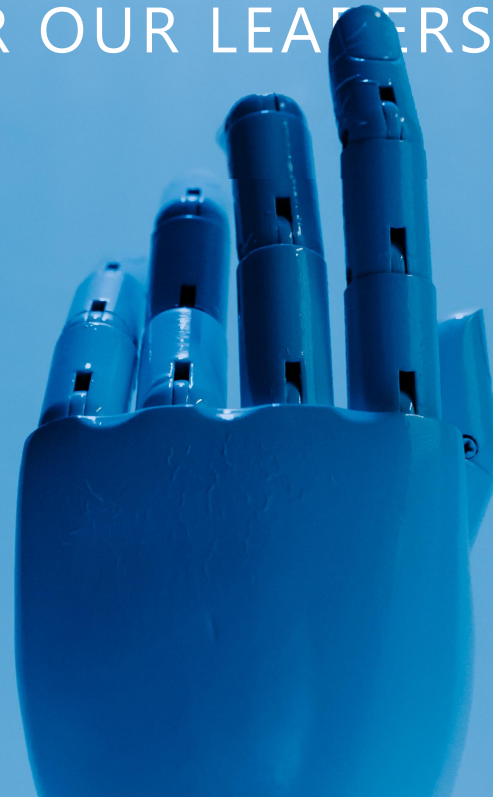
Cumulative shipments (By 2023)

2023 shipment 7812MW

Research & Develop



HARDCORE TECHNOLOGY LAYS THE FOUNDATIONS  
FOR OUR LEADERSHIP



## R&D Field

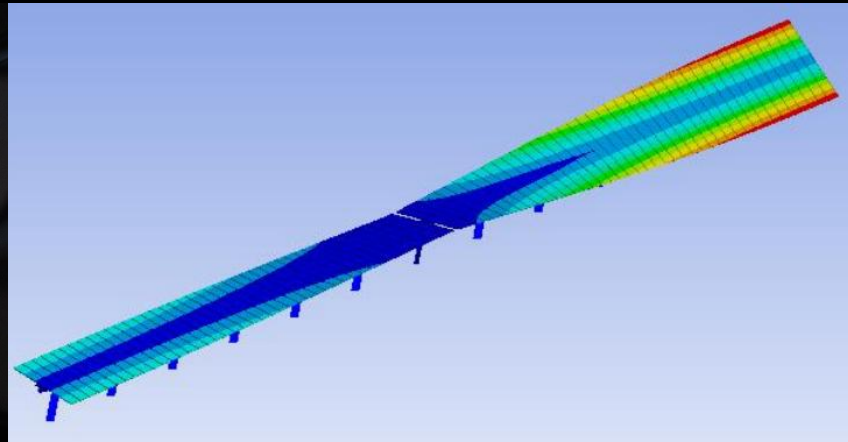
---

We are pioneer of clean energy solutions, based on structural and automated controls. We understand complex processes and wind engineering calculations, keep researching and developing industrial solutions for metal materials, mechanical calculations, intelligent mechanical control and machine learning algorithms.



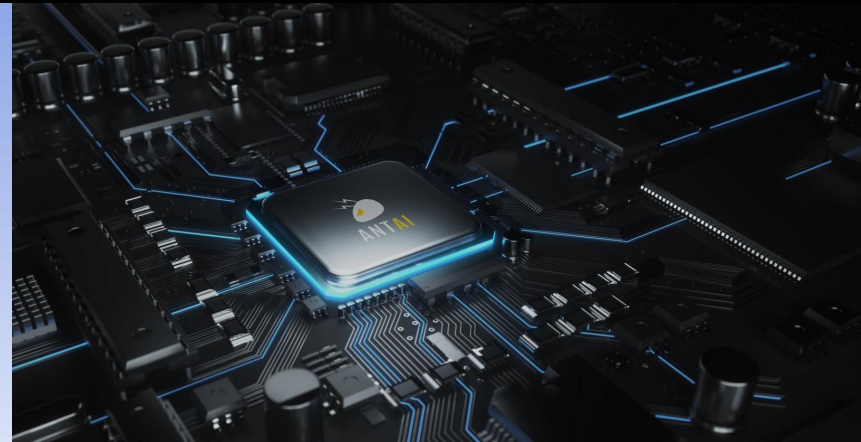
### 「 MATERIAL 」

High performance alloys



### 「 MECHANICS 」

Engineering calculations for wind & simulation of loads



### 「 CONTROL & AI ALGORITHM 」

Intelligent mechanical control and machine learning

## Material Research & Manufacturing

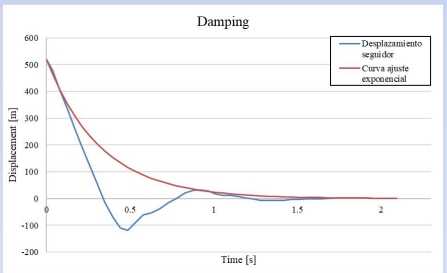
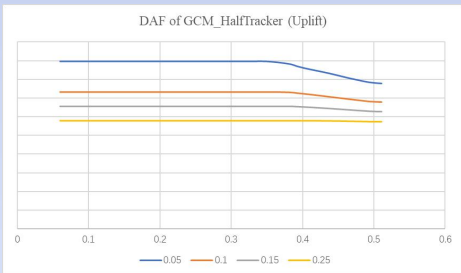
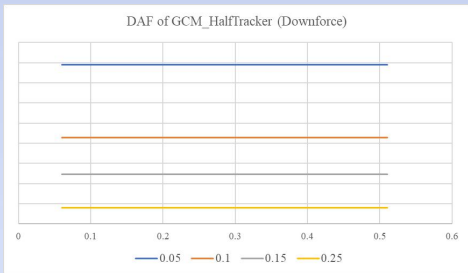
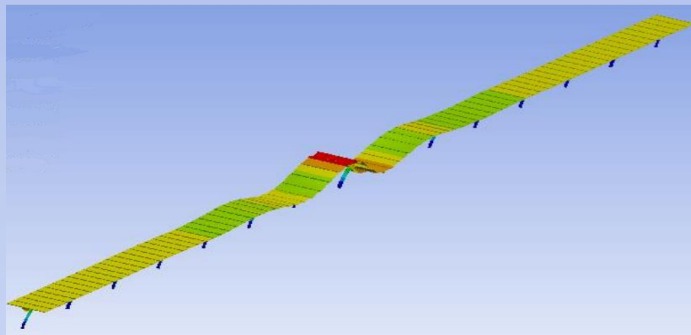
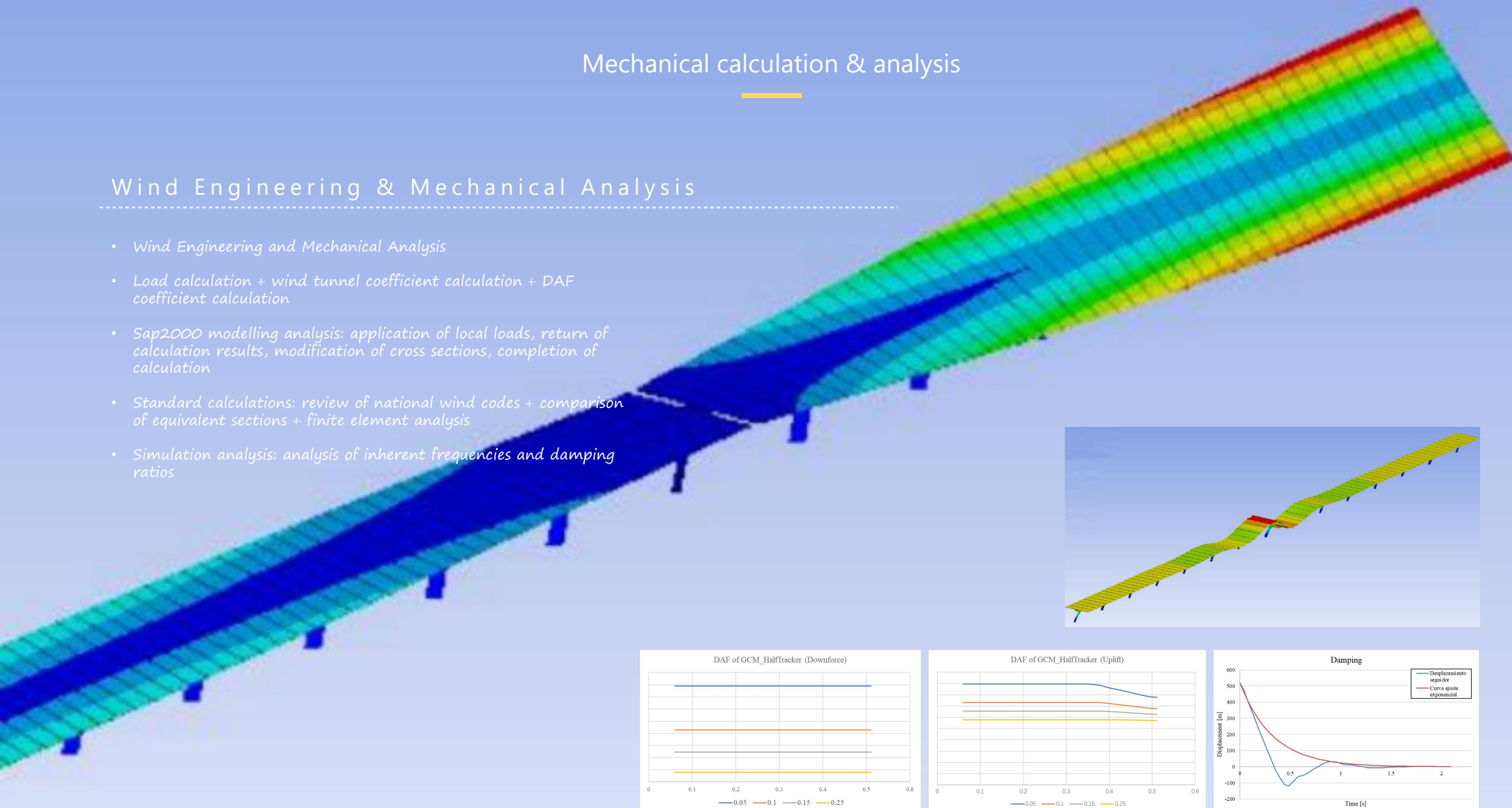
### High Performance Alloy Exceeding National Standards

	AL6063-T5	AL6005-T5	AL6A22-T6
Tensile strength (Mpa)	175	250	300
Yield strength (Mpa)	130	200	285
Post-break elongation (%)	7	7	10

# Mechanical calculation & analysis

## Wind Engineering & Mechanical Analysis

- Wind Engineering and Mechanical Analysis
- Load calculation + wind tunnel coefficient calculation + DAF coefficient calculation
- Sap2000 modelling analysis: application of local loads, return of calculation results, modification of cross sections, completion of calculation
- Standard calculations: review of national wind codes + comparison of equivalent sections + finite element analysis
- Simulation analysis: analysis of inherent frequencies and damping ratios



## Control & AI Algorithm

---

### Intelligent Mechanical Control And Machine Learning

---

#### *Electronically controlled communication*

- 2.4G Zigbee wireless networking technology
  - Faster and more stable transmission
  - One control box for one stand (TCU)

#### *Power supply method*

- Control box self-powered / lithium battery back-up
  - String powered Inverter powered

#### *Intelligent algorithms*

- Machine learning algorithms
- Meteorological disasters Warning
  - Terrain adaptation

# R&D Certification

120  
Persons

## 120 Persons High-educated R&D Team

- It has four R&D bases in Xiamen, Shanghai, Zhangzhou and Madrid;
- A highly educated research and development team of 120 people;
- More than 1/3 postgraduate degree or above

18  
Years

## 18 Years of Professional Experience

- Engaged in the research and development of photovoltaic brackets for 17 years;
- Obtained multiple national patents;
- Leading and participating in the application of a large number of domestic and foreign projects

200  
Items

## 200+ Patents & Certifications

- 68 certification tests
- 86 national patents
- 8 copyrights



- National High-tech Enterprises
- The "Specialized New Little Giant" of the ministry of industry and information technology
- Provincial Academician Expert Workstation

## Design Standards



SEI  
STANDARDS  
SERIES



JISの規格

## Technical certification



CPP



gamcorp



Product & Solution



SOLUTIONS COVERING  
ALL MATERIALS · ALL FUNCTIONS · ALL SCENARIOS

## SOLAR TRACKING SYSTEM

High Performance & High Efficiency



## GROUND MOUNTING SYSTEM

Cost Effective & Reliable



## BIPV INDUSTRIAL SOLUTION

Deep Fusion With Architecture



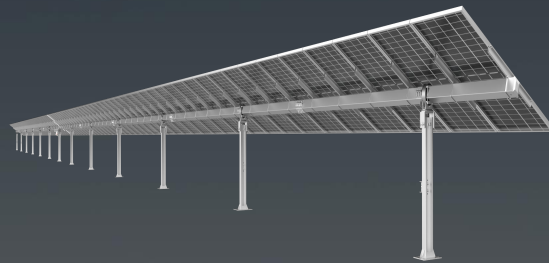
## RESIDENTIAL / C&I ROOFTOP

Protect The Roof & Save Costs



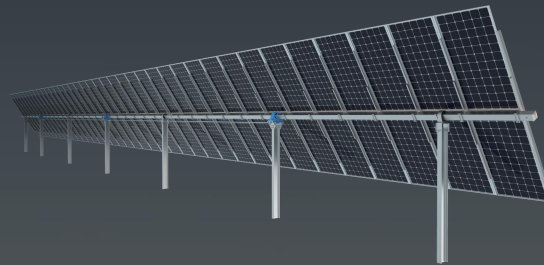
# Solar Tracking System

Suitable for large ground projects with strong terrain adaptability, high applicability and applicability. With Antai's exclusive intelligent monitoring, operation and maintenance system for real-time tracking, it effectively improves power generation efficiency and reduces operating costs.



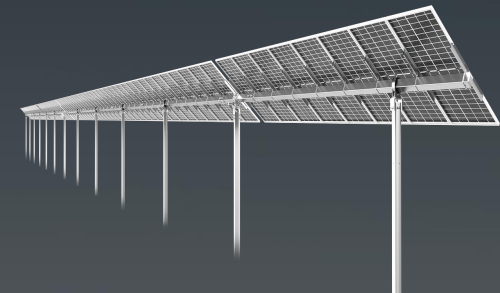
Tai **Simple**

Slew-drive Single-axis  
Independent Solar Tracking System -1P



Tai **Universa**

Multiple Slew-drive Single-axis  
Independent Solar Tracking System -2P



Tai **Space**

Multiple Slew-drive Single-axis  
Independent Solar Tracking System -1P

## Ground Mounting System

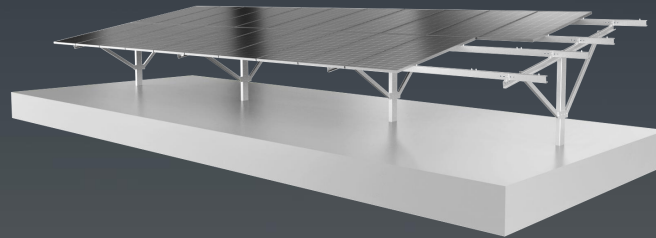
---

Suitable for large ground projects, a variety of products are available according to project requirements.

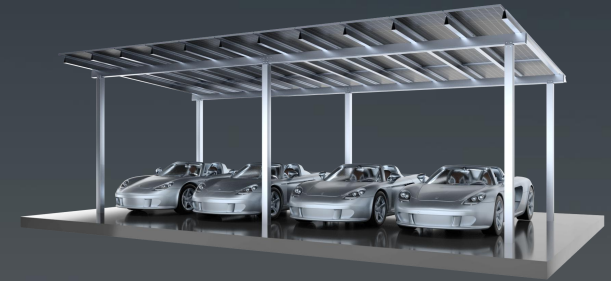
High-strength materials, stable structure, economical and practical, easy installation and maintenance.



Al/Steel



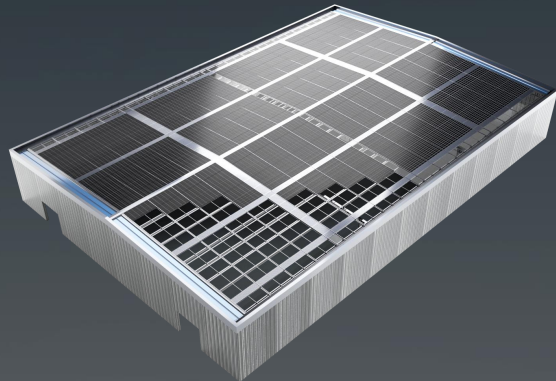
Steel



Carport

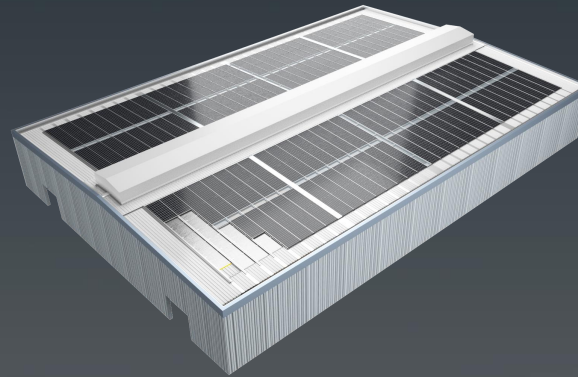
# BIPV Industrial Solution

From new roofs to old roofs, a wide range of products is available to cover a wide range of usage scenarios and needs, providing a green boost to the plant.



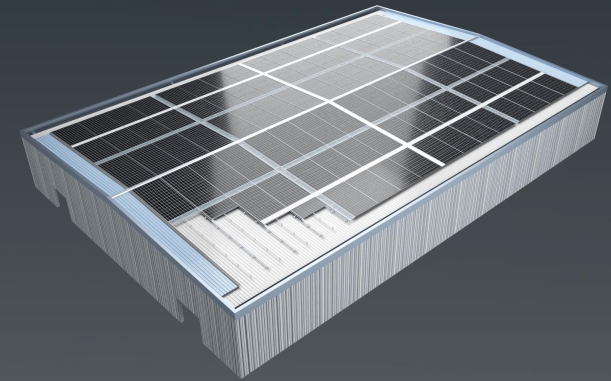
Taiyang Roof - Single

Application scenario:  
new & refurbished plant



Taiyang Roof - Single +  
Insulation

Application scenario:  
new & refurbished plant with insulation needs

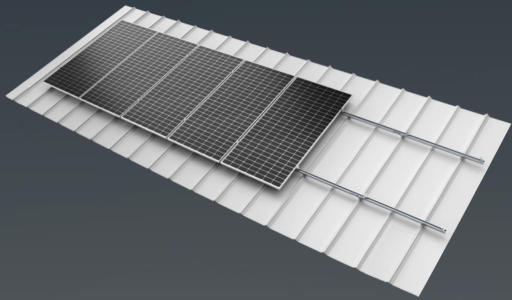


Taiyang Roof - Dual

Application scenario:  
traditional metal roof or tile roofs

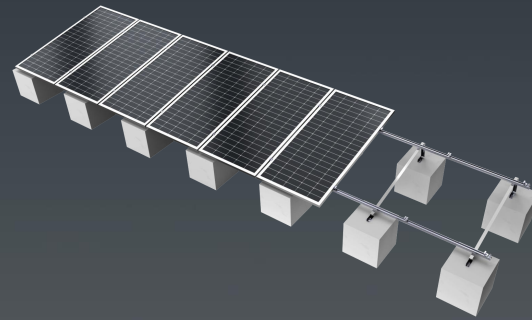
## Residential / C&I Rooftop

The product range is able to suit all types of roofs, can be customized to suit different requirements



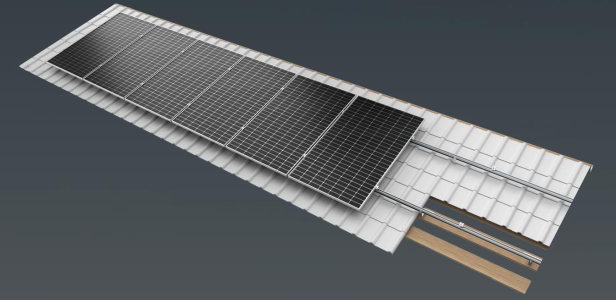
Metal Roof

A wide range of products to suit different types of metal roof compatible with designs with or with rails




Flat Roof

Depending on the load-bearing requirements of the roof, different solutions such as ballast and tripod can be provided in a targeted manner for efficient and convenient installation.



Tile Roof

With a wide range of hooks and lightweight aluminum rails. Suitable for all types of common residential roofs.



Manufacture & Quality

ONE-STOP PRODUCTION  
EXCELLENCE QUALITY

## Production Base & Capacity

### 6 Global Production Bases

China-Fujian, Jiangsu, Tianjin, Indonesia, India, Brazil



Brazil



India



Fujian



Tianjin



Jiangsu



Indonesia

Annual Production Capacity **25GW**

Annual Capacity of Steel **15 G W**

Annual Capacity of Aluminum **10 G W**

## Manufacture & Quality

---

### 「QEHS」 Quality System Based On Customer Value

Continuously optimize quality until customer satisfaction

---



Safety



Quality Assurance



CNAS Lab-Certificat



Reliable Design



Third-party Certification



Health & Environment

Service & Support

# CUSTOMER VALUE ARE OUR TOP PRIORITY



# One-stop Lifecycle Service

Before sales



## Quick Respond

24-hour response to global customer



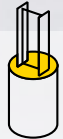
## Customized Design

Understanding the needs and giving the best solution



## POT Test

Provide a complete POT test process



## Pile Design

Based on the POT report, design the pile foundation type and burial depth



## SolarAID Platform

Automated, location-based scheduling design platform. Easy plant design

On sales



## Quick Respond

24-hour response to global customer



## Technical Support

A wide range of technical consulting and training



## Material support

Supply of a full set of product installation materials and technical documentation



## Local Service

Multiple offices worldwide to provide on-site support



## Local Logistics

Quick response to project needs with local warehousing in multiple locations worldwide

After sales



## Quick Respond

24-hour response to global customer



## After Sales Warranty

10-year warranty  
Life cycle after-sales service



## Local Service

Multiple offices worldwide to provide on-site support



## Local Logistics

Quick response to project needs with local warehousing in multiple locations worldwide



## Station Monitoring

Monitoring the safety of power station operations from anywhere, at any time

Global Project Cases

---

GUARDING OUR COMMITMENT  
WITH WARM HEART

# Global Project Cases

## Europe

Spain 295MW Tracking system  
Finland 32MW Fixed Mounting System

## Latin America

Brazil 187MW Tracking system  
Colombia 97MW Tracking system  
Chile 4.5MW Tracking system  
Argentina 16MW Tracking system

## Africa

Burkina Faso 43MW Fixed Mounting System

## Australia

Australia 8MW Tracking system

## Asia

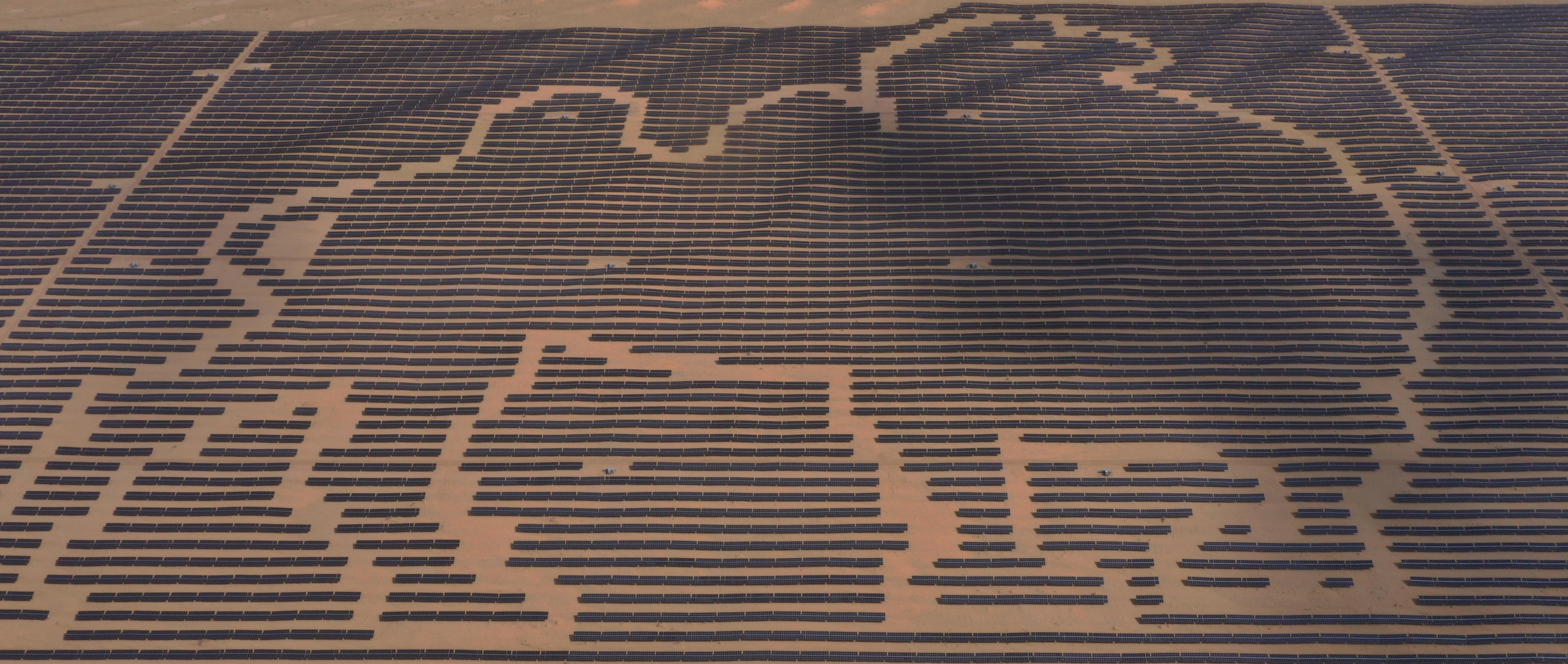
China  
Guangxi 222MW Fixed Mounting System  
Guangxi 180MW Tracking system  
Hubei 200MW Tracking system  
Gansu 100MW Fixed Mounting System  
Ningxia 172MW Tracking system  
Yunnan 100MW BIPV

Korea 150MW Fixed Mounting System  
Thailand 8.5MW Fixed Mounting System  
Philippines 84MW Fixed Mounting System  
Malaysia 200MW Fixed Mounting System  
Singapore 150MW Fixed Mounting System  
India 23MW Tracking system  
Bangladesh 150MW Fixed Mounting System  
Uzbekistan 40MW Tracking system  
Armenia 43MW Tracking system



\*Continuously updating

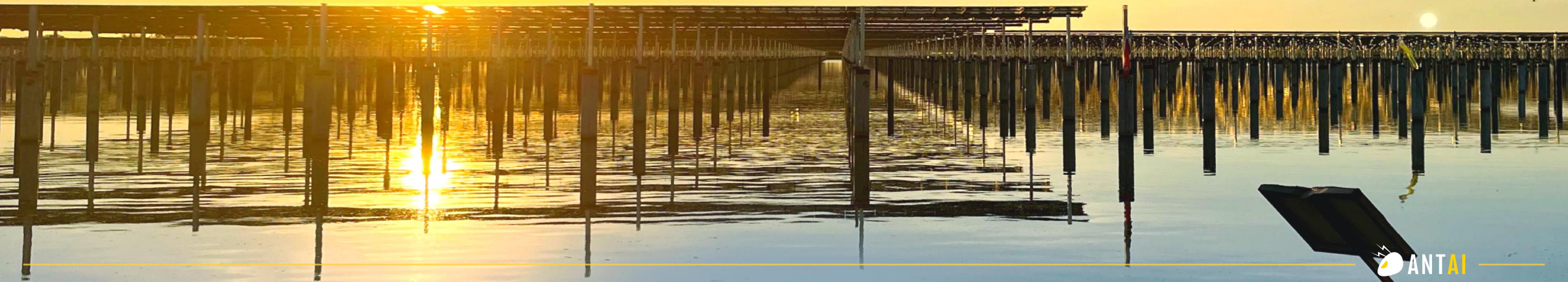
China- Inner Mongolia Capacity : 100MW  
Fixed Adjustable Tilt Ground Mounting System



China-Guangxi Capacity : 180MW  
Tracking System



China-Hubei Capacity : 200MW  
Tracking System



China-Ningxia Capacity : 172MW  
Tracking System





Philippines Capacity : 65MW  
Fixed Ground Mounting System



Our Vision

THE WORLD'S LEADING SOLUTION PROVIDER OF CLEAN ENERGY



Be Sincere  
& Cooperative



Be Determined  
& Advanced

Our Values



Be Courageous  
& Trailblazing



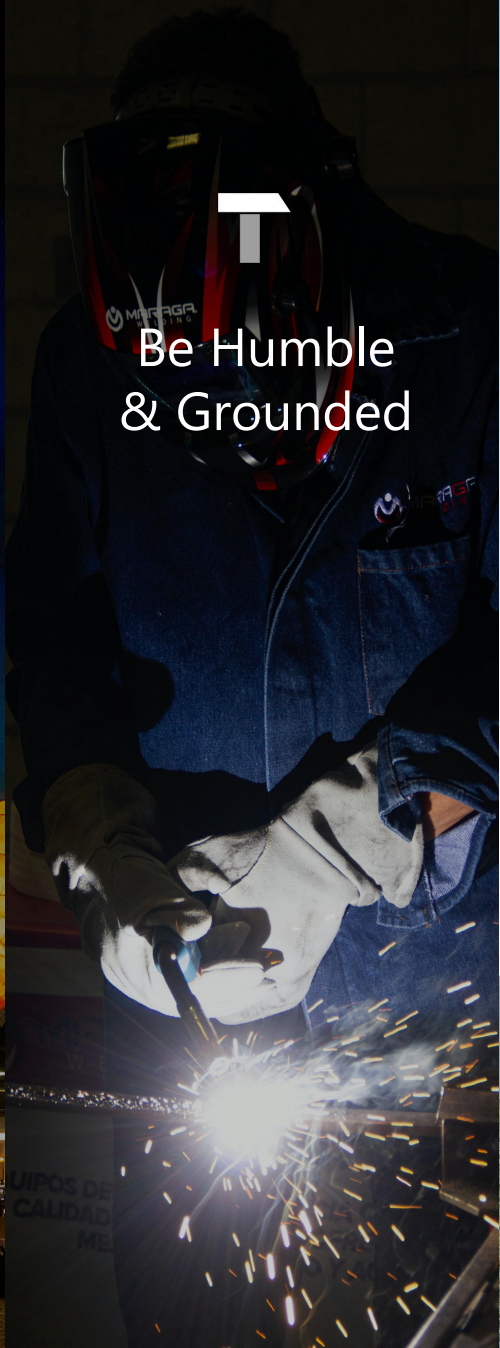
Be Open  
& Pluralistic



Be Humble  
& Grounded



ANT STYLE



# THANK YOU



Subscribe us  
on wechat

## Headquarter

ANTAI TECHNOLOGY CO., LTD  
30F, W Square, Huandao East Road, Siming District,  
Xiamen, China

## Shanghai R&D Center

T4-L17, IM Shanghai Changning International, No.1398  
Kaixuan Road, Changning District, Shanghai, China

## Production Bases in China

ANTAI ALUMINIUM CO.  
Guanshan Industrial Park, Changtai County, Zhangzhou  
City, Fujian Province, China

## Website

[www.antisolar.com](http://www.antisolar.com)