

# M9200

## SoftPOS Mobile



Food & Beverage



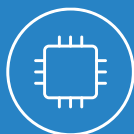
Fashion & Retail



Convenience Store



Powered by  
Android 12



Qualcomm  
Quad-Core



5.5" IPS  
Main Display



Advanced  
Connectivity

SOFTPOS



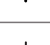









[www.paxtechnology.com](http://www.paxtechnology.com)

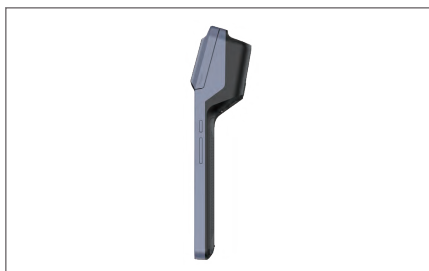


# M9200

## Version with Printer

## SPECIFICATIONS


	<b>Operating System</b>	Android 12 Go Edition GMS Certified with Supporting UNIPHIZ UI
	<b>Processor</b>	Qualcomm Quad-Core, Cortex A53 2.0GHz
	<b>Memory</b>	LPDDR4 2GB + eMMC 32GB External: microSD Card slot Up to 256GB
	<b>Displays</b>	5.5" 720 × 1440 Pixels, IPS LCD, 400nits, Multi - Touch, Anti - Fingerprint coating, Mohs 6
	<b>Cameras</b>	Optional: Front Camera: 2MP Fix Focus Rear Dual-Camera: 2MP Auto Focus (Optional: 5MP) + Barcode Scanner
	<b>Comms Configurations</b>	4G / 3G / GPRS + Wi-Fi® 2.4GHz / 5GHz + <b>Bluetooth® 5.0</b>
	<b>Audio</b>	Audio Speaker Optional: Dual Microphone
	<b>Sensors</b>	Light Sensor   G-Sensor   Vibration Motor   Flashlight
	<b>Card Readers</b>	Native Android NFC (Card Reader, Card Emulation)
	<b>Power</b>	Input: 100 - 240V AC, 0.5A   Output: 5.0V DC, 2.0A
	<b>Battery</b>	Li-ion Polymer 7.6V / 2800mAh, Field Replaceable
	<b>Buttons</b>	Power Button   2 Volume Buttons   Scan Button
	<b>Printer</b>	Paper Roll: 58mm width, 40mm diameter   Optional: Label Printing, Paper Roll: 30-58mm width, 40mm diameter
	<b>SIM/SAM</b>	2 SAM + 1 SIM, or 1 SAM + 2 SIM eSIM (optional)
	<b>Ports</b>	1 Type-C, OTG   1 POGO PIN (2 PIN)
	<b>Drop Height</b>	1.2m
	<b>Physical</b>	214 × 80 × 51.5mm   350g
	<b>Environmental</b>	Operating Temperature: -10°C ~ 45°C (14°F ~ 113°F) Storage Temperature: -20°C ~ 70°C (-4°F ~ 158°F) Relative Humidity: 5% ~ 96%, non-condensing
	<b>Accessories</b>	Optional: Wrist Band   Charging Base



# M9200

Version without Printer

## SPECIFICATIONS

	<b>Operating System</b>	Android 12 Go Edition GMS Certified with Supporting UNIPHIZ UI
	<b>Processor</b>	Qualcomm Quad-Core, Cortex A53 2.0GHz
	<b>Memory</b>	LPDDR4 2GB + eMMC 32GB External: microSD Card slot Up to 256GB
	<b>Displays</b>	5.5" 720 × 1440 Pixels, IPS LCD, 400nits, Multi - Touch, Anti - Fingerprint coating, Mohs 6
	<b>Cameras</b>	Optional: Front Camera: 2MP Fix Focus Rear Dual-Camera: 2MP Auto Focus (Optional: 5MP) + Barcode Scanner
	<b>Comms Configurations</b>	4G / 3G / GPRS + Wi-Fi® 2.4GHz / 5GHz + <b>Bluetooth® 5.0</b>
	<b>Audio</b>	Audio Speaker Optional: Dual Microphone
	<b>Sensors</b>	Light Sensor   G-Sensor   Vibration Motor   Flashlight
	<b>Card Readers</b>	Native Android NFC (Card Reader, Card Emulation)
	<b>Power</b>	Input: 100 - 240V AC, 0.5A   Output: 5.0V DC, 2.0A
	<b>Battery</b>	Li-ion Polymer 7.6V / 2000mAh, Field Replaceable
	<b>Buttons</b>	Power Button   2 Volume Buttons   Scan Button
	<b>SIM/SAM</b>	2 SAM
	<b>Ports</b>	1 Type-C, OTG   1 POGO PIN (2 PIN)
	<b>Drop Height</b>	1.2m
	<b>Physical</b>	160 × 76 × 15mm   235g
	<b>Environmental</b>	Operating Temperature: -10°C ~ 45°C (14°F ~ 113°F) Storage Temperature: -20°C ~ 70°C (-4°F ~ 158°F) Relative Humidity: 5% ~ 96%, non-condensing
	<b>Accessories</b>	Optional: Wrist Band   Charging Base



This document is provided to you for informational purposes only. All features and specifications are subject to change without notice. PAX and the PAX logo are either trademarks or registered trademarks of PAX Technology Limited in China and/or other countries. The Bluetooth® word mark and logos are registered trademarks owned by Bluetooth SIG, Inc. and any use of such marks by PAX Technology Limited is under license. Other trademarks and trade names are those of their respective owners. © 2025 PAX Technology Limited. All rights reserved.



MAXSTORE