



# B920 Charging Base Station

The B920 charging base station acts as a charging home for the S920 terminal, ensuring staff can easily locate the terminal when needed for conducting transactions.

#### Voltage

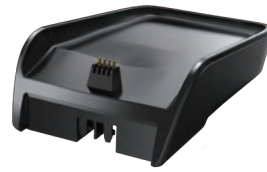
Input: 100 - 240V AC, 50 / 60 Hz, 0.3A  
Output: 9VDC, 1A

#### Environmental

0°C to 50°C (32°F to 122°F) operating temperature  
-20°C to 70°C (-4°F to 158°F) storage temperature  
10% to 93% relative humidity, non-condensing

#### Physical

L x W x H: 135 x 84 x 43mm  
Weight: 154g



[www.paxglobaltechnology.com](http://www.paxglobaltechnology.com)

*Your Payment Partner of Choice*

