

The project “Prevention of malnutrition through case-specific counselling at home level by cascading training of Anganwadi workers” is a collaborative effort by the Directorate of Women & Child Development, Government of Assam and ITC Limited under Mission Sunhera Kal. As part of this project, a Training Need Assessment (TNA) was conducted in the month of May & June 2023, in 10 ICDS blocks of Barpeta. A total of 102 Anganwadi Supervisors and 1878 Anganwadi Workers participated in the survey.

## KNOWLEDGE AND PRACTICE OF SUPERVISORS (%)



**102** Total Supervisors surveyed

Supervisors who make monthly action plan based on Monthly Progress Report

**43.5**

Supervisors who provide feedback to AWWs based on respective Monthly Progress Report

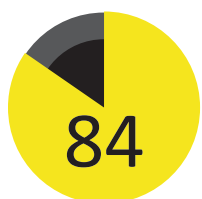
**56.5**

Supervisors who recognise better performing AWWs

**29.3**

## KNOWLEDGE AND PRACTICE OF ANGANWADI WORKERS

### Correct knowledge on infant and child feeding practice among Anganwadi Workers (%)



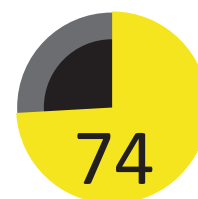
Exclusive breastfeeding



Minimum dietary diversity (MDD)



Child feeding as per IYCF recommendation



Pregnant women's weight gain is maximum in 3rd trimester

### Home visitation and counselling reported by Anganwadi Workers (%)

**31**

Home visitation of 3rd trimester pregnant women for breastfeeding preparedness

**44**

Home visitation of 2-3 months old children to prevent breastfeeding faltering

**53**

Home visitation of children completed 6 months for timely initiation of complementary feeding

**41**

Home visitation of 7-8 months old children for diet diversity

### Growth promotion and counselling by Anganwadi Workers (%)

**48**

AWWs who counsel the mother if the child's weight is stagnant for 2 months or more

**73**

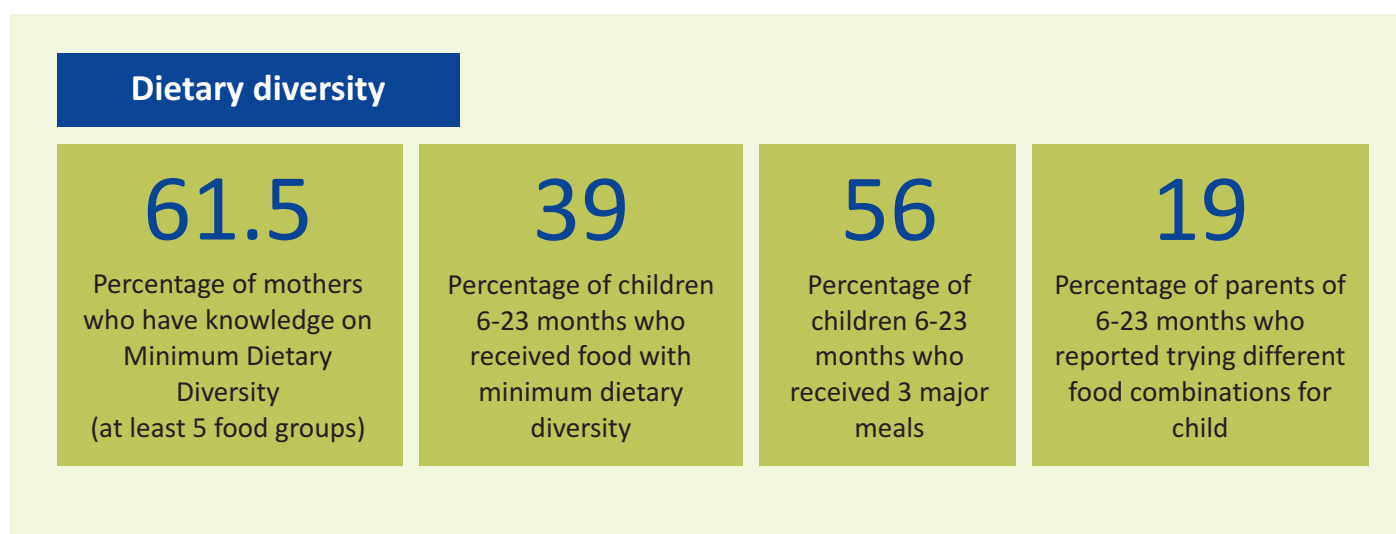
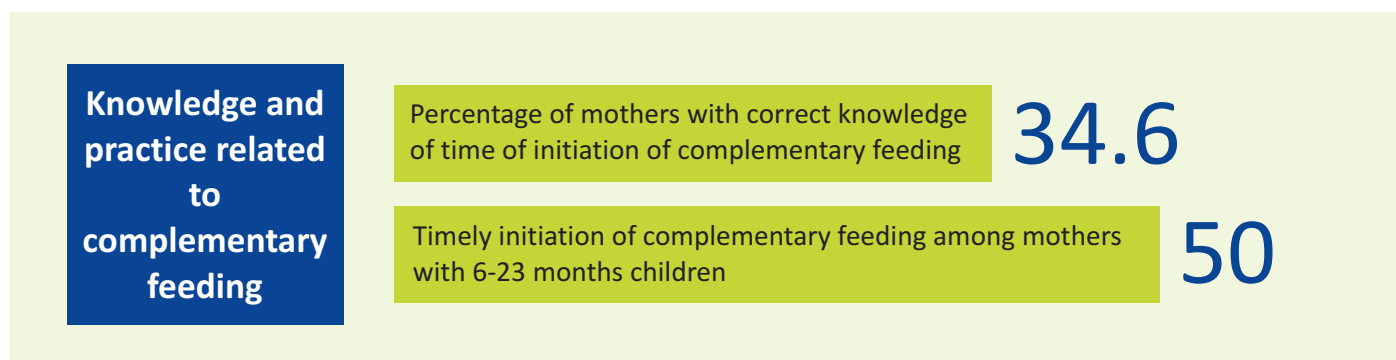
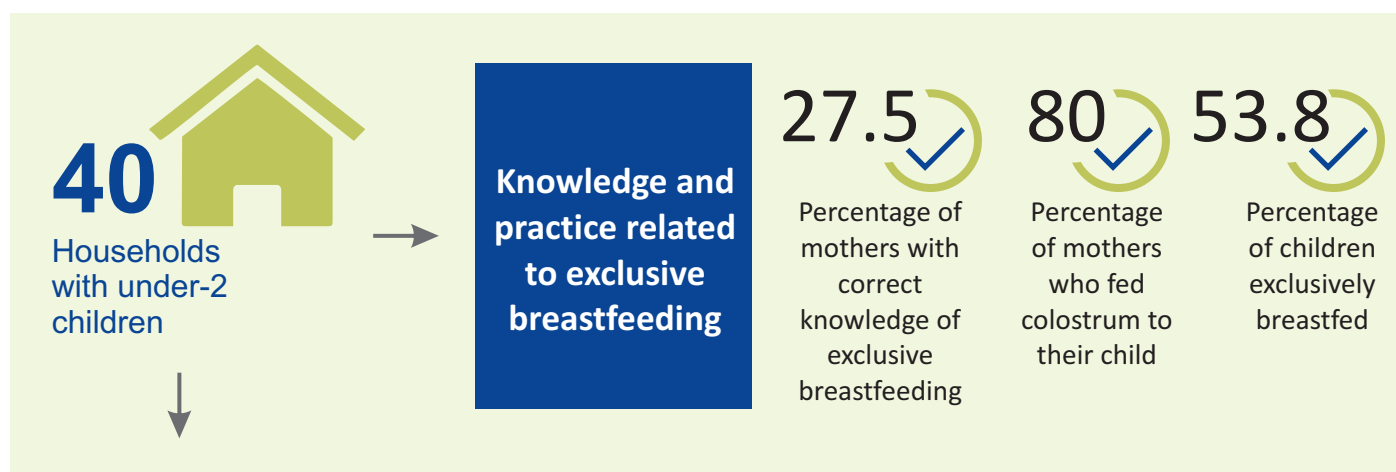
AWWs who counsel the mother by showing growth chart

# KNOWLEDGE AND PRACTICES OF MOTHERS OF UNDER 2 CHILDREN REGARDING CHILD FEEDING

## FACT SHEET

BARPETA

The project "Prevention of malnutrition through case-specific counselling at home level" is a collaborative effort by the Directorate of Women & Child Development, Government of Assam and ITC Limited under Mission Sunhera Kal. As part of this project, a household level needs assessment study to understand current child feeding practice was conducted in Kalgachia Sector, Ruposhi block, with high child malnutrition. Mothers and family members from 40 households with under-2 children participated in the survey.



#### KNOWLEDGE AND PRACTICE OF SUPERVISORS (%)

The project “Prevention of malnutrition through case-specific counselling at home level by cascading training of Anganwadi workers” is a collaborative effort by the Directorate of Women & Child Development, Government of Assam and ITC Limited under Mission Sunhera Kal. As part of this project, a Training Need Assessment (TNA) was conducted in the month of May & June 2023, in 8 ICDS blocks of Baksa. A total of 90 Anganwadi Supervisors and 1406 Anganwadi Workers participated in the survey.



90 Total Supervisors surveyed

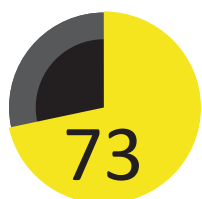
Supervisors who make monthly action plan based on Monthly Progress Report 45

Supervisors who provide feedback to AWWs based on respective Monthly Progress Report 58.8

Supervisors who recognise better performing AWWs 37.5

#### KNOWLEDGE AND PRACTICE OF ANGANWADI WORKERS

#### Correct knowledge on infant and child feeding practice among Anganwadi Workers (%)



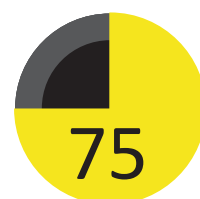
Exclusive breastfeeding



Minimum dietary diversity (MDD)



Child feeding as per IYCF recommendation



Pregnant women's weight gain is maximum in 3rd trimester

#### Home visitation and counselling reported by Anganwadi Workers (%)

14

Home visitation of 3rd trimester pregnant women for breastfeeding preparedness

34

Home visitation of 2-3 months old children to prevent breastfeeding faltering

36

Home visitation of children completed 6 months for timely initiation of complementary feeding

27

Home visitation of 7-8 months old children for diet diversity

#### Growth promotion and counselling by Anganwadi Workers (%)

57

AWWs who counsel the mother if the child's weight is stagnant for 2 months or more

76

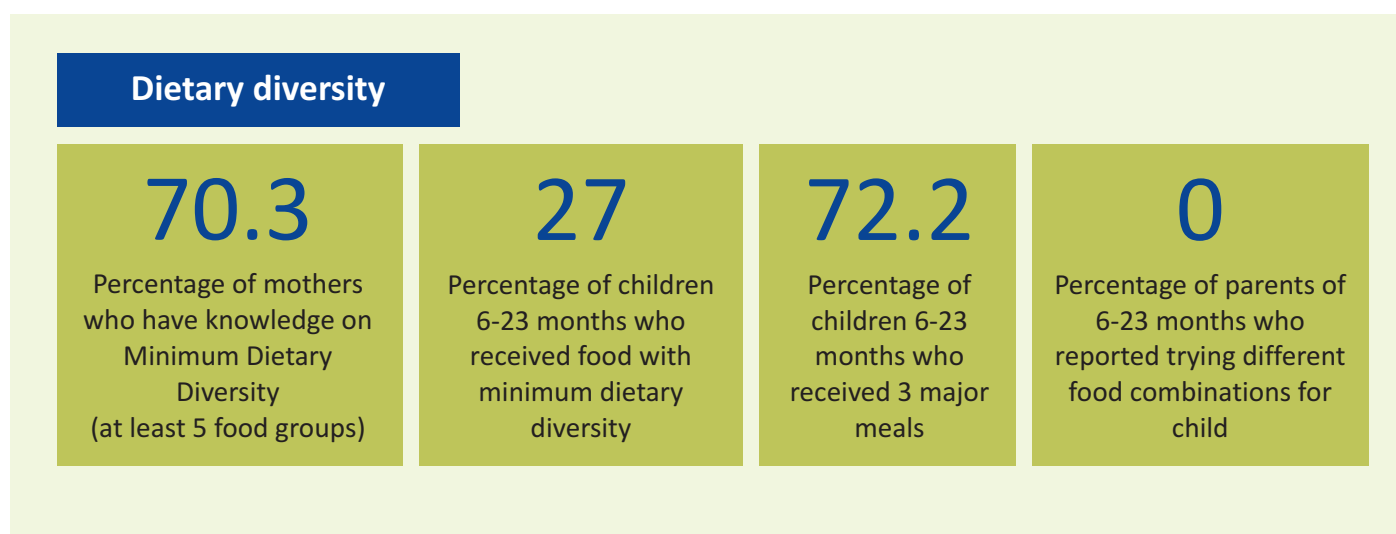
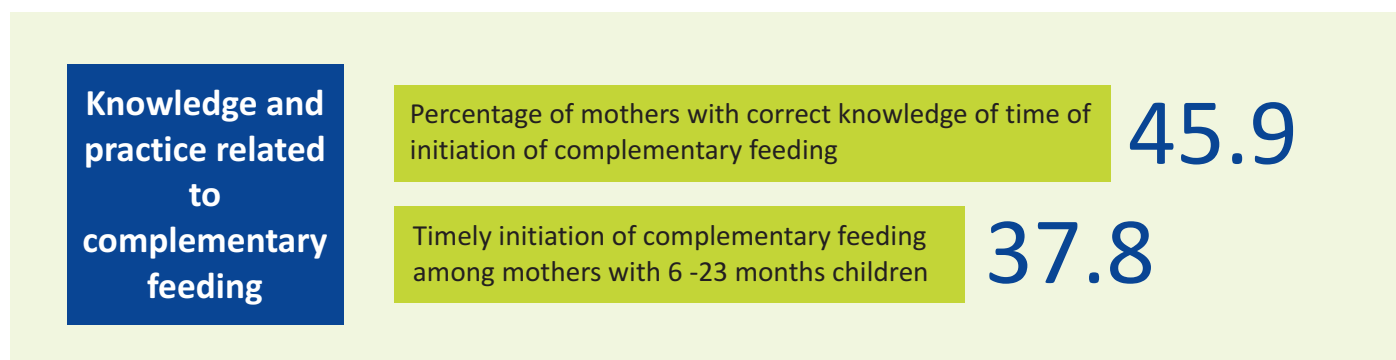
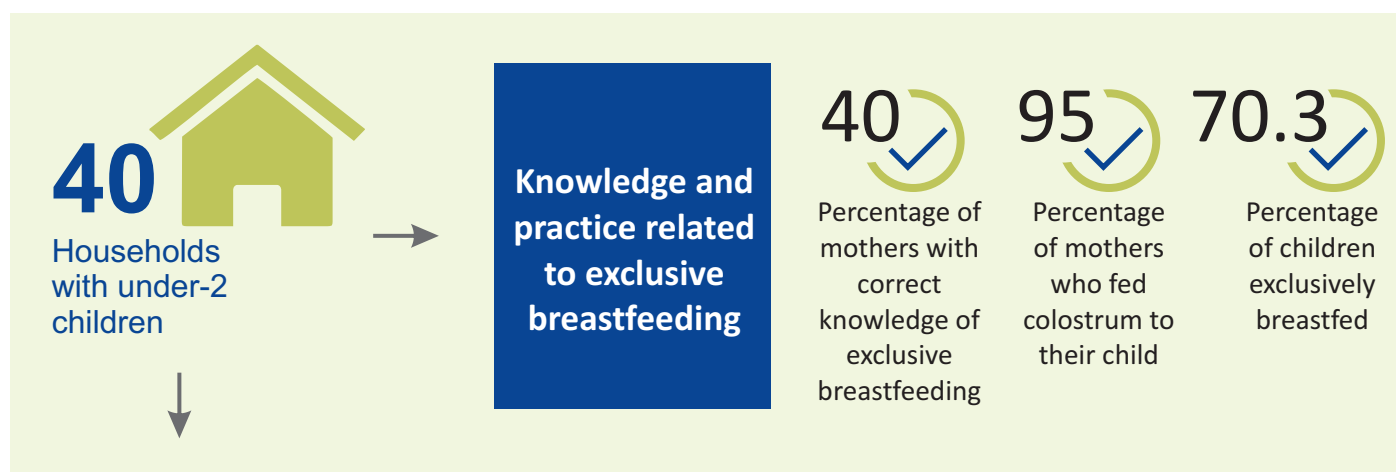
AWWs who counsel the mother by showing growth chart

# KNOWLEDGE AND PRACTICES OF MOTHERS OF UNDER 2 CHILDREN REGARDING CHILD FEEDING

## FACT SHEET

BAKSA

The project “Prevention of malnutrition through case-specific counselling at home level” is a collaborative effort by the Directorate of Women & Child Development, Government of Assam and ITC Limited under Mission Sunhera Kal. As part of this project, a household level needs assessment study to understand current child feeding practice was conducted in Nagrijuli block, Kachukata sector, with high child malnutrition. Mothers and family members from 40 households with under-2 children participated in the survey.



#### KNOWLEDGE AND PRACTICE OF SUPERVISORS (%)

The project “Prevention of malnutrition through case-specific counselling at home level by cascading training of Anganwadi workers” is a collaborative effort by the Directorate of Women & Child Development, Government of Assam and ITC Limited under Mission Sunhera Kal. As part of this project, a Training Need Assessment (TNA) was conducted in the month of May & June 2023, in 6 ICDS blocks of Darrang. A total of 57 Anganwadi Supervisors and 1179 Anganwadi Workers participated in the survey.



57

Total Supervisors surveyed

Supervisors who make monthly action plan based on Monthly Progress Report

72.3

Supervisors who provide feedback to AWWs based on respective Monthly Progress Report

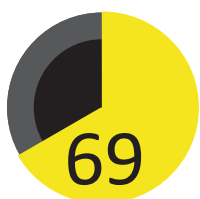
74.5

Supervisors who recognise better performing AWWs

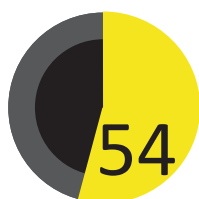
46.8

#### KNOWLEDGE AND PRACTICE OF ANGANWADI WORKERS

#### Correct knowledge on infant and child feeding practice among Anganwadi Workers (%)



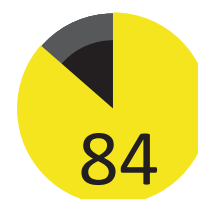
Exclusive breastfeeding



Minimum dietary diversity (MDD)



Child feeding as per IYCF recommendation



Pregnant women's weight gain is maximum in 3rd trimester

#### Home visitation and counselling reported by Anganwadi Workers (%)

44

Home visitation of 3rd trimester pregnant women for breastfeeding preparedness

45

Home visitation of 2-3 months old children to prevent breastfeeding faltering

61

Home visitation of children completed 6 months for timely initiation of complementary feeding

49

Home visitation of 7-8 months old children for diet diversity

#### Growth promotion and counselling by Anganwadi Workers (%)

60

AWWs who counsel the mother if the child's weight is stagnant for 2 months or more

54

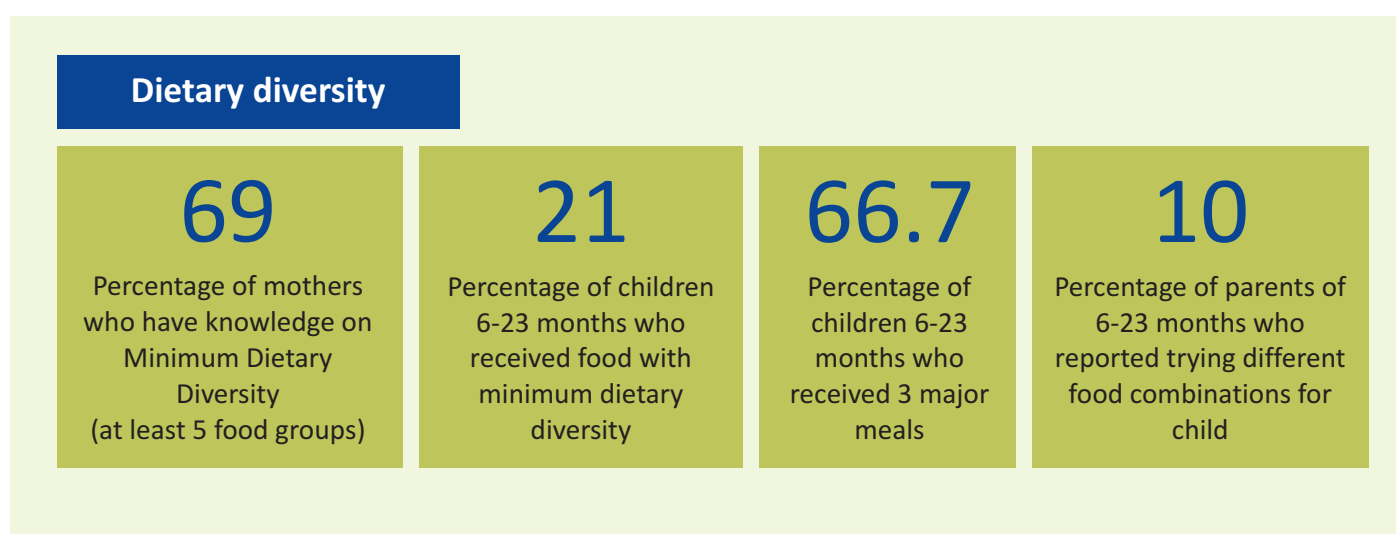
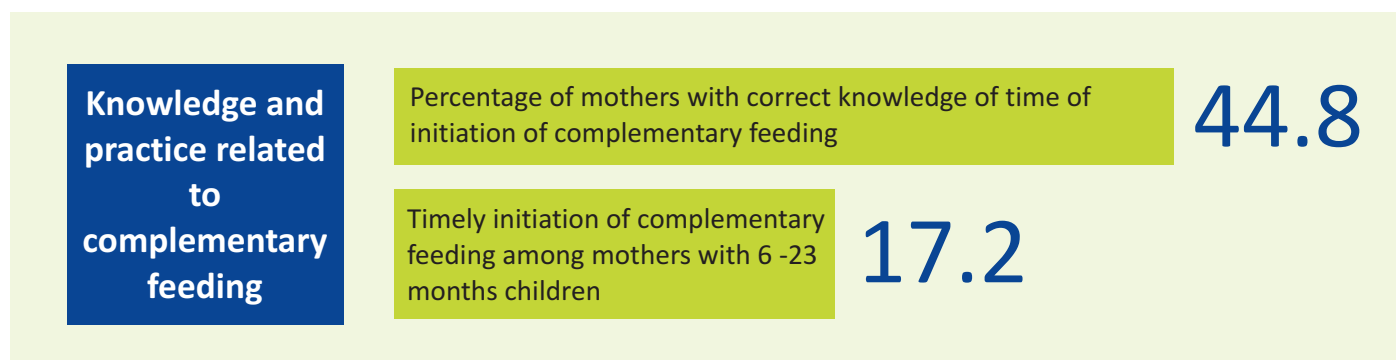
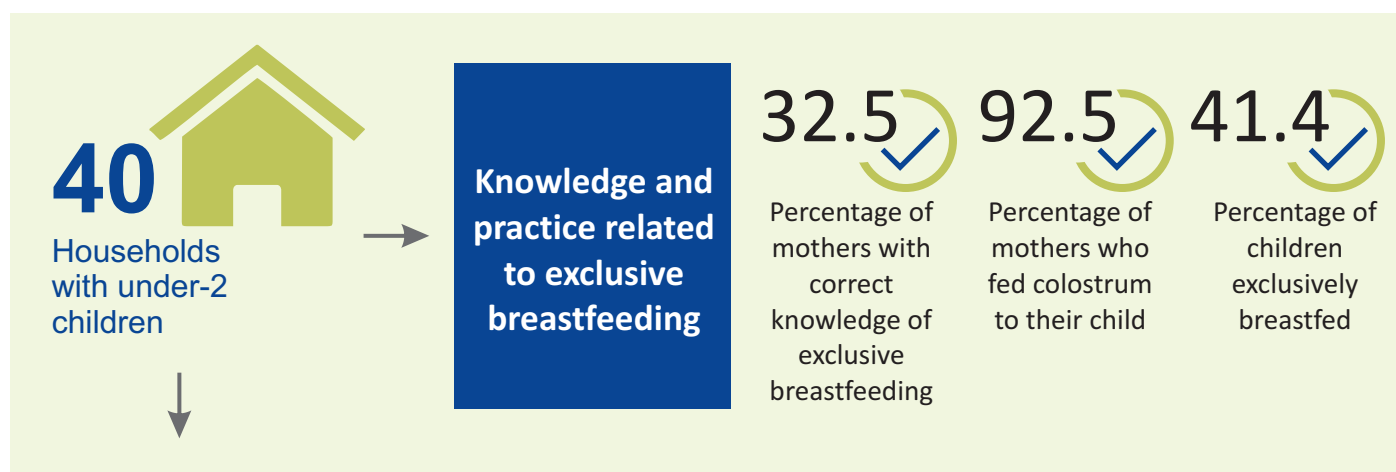
AWWs who counsel the mother by showing growth chart

# KNOWLEDGE AND PRACTICES OF MOTHERS OF UNDER 2 CHILDREN REGARDING CHILD FEEDING

## FACT SHEET

DARRANG

The project "Prevention of malnutrition through case-specific counselling at home level" is a collaborative effort by the Directorate of Women & Child Development, Government of Assam and ITC Limited under Mission Sunhera Kal. As part of this project, a household level needs assessment study to understand current child feeding practice was conducted in Dalgaon Sialmari block, Sialmari sector, with high child malnutrition. Mothers and family members from 40 households with under-2 children participated in the survey.



The project “Prevention of malnutrition through case-specific counselling at home level by cascading training of Anganwadi workers” is a collaborative effort by the Directorate of Women & Child Development, Government of Assam and ITC Limited under Mission Sunhera Kal. As part of this project, a Training Need Assessment (TNA) was conducted in the month of May & June 2023, in 11 ICDS blocks of Dhubri. A total of 69 Anganwadi Supervisors and 1379 Anganwadi Workers participated in the survey.

#### KNOWLEDGE AND PRACTICE OF SUPERVISORS (%)



69

Total Supervisors surveyed

Supervisors who make monthly action plan based on Monthly Progress Report

30.5

Supervisors who provide feedback to AWWs based on respective Monthly Progress Report

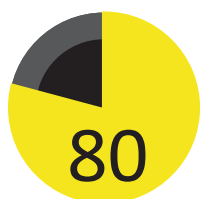
55.9

Supervisors who recognise better performing AWWs

45.8

#### KNOWLEDGE AND PRACTICE OF ANGANWADI WORKERS

#### Correct knowledge on infant and child feeding practice among Anganwadi Workers (%)



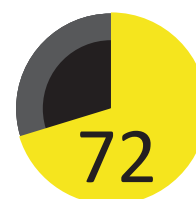
Exclusive breastfeeding



Minimum dietary diversity (MDD)



Child feeding as per IYCF recommendation



Pregnant women's weight gain is maximum in 3rd trimester

#### Home visitation and counselling reported by Anganwadi Workers (%)

26

Home visitation of 3rd trimester pregnant women for breastfeeding preparedness

38

Home visitation of 2-3 months old children to prevent breastfeeding faltering

57

Home visitation of children completed 6 months for timely initiation of complementary feeding

41

Home visitation of 7-8 months old children for diet diversity

#### Growth promotion and counselling by Anganwadi Workers (%)

45

AWWs who counsel the mother if the child's weight is stagnant for 2 months or more

68

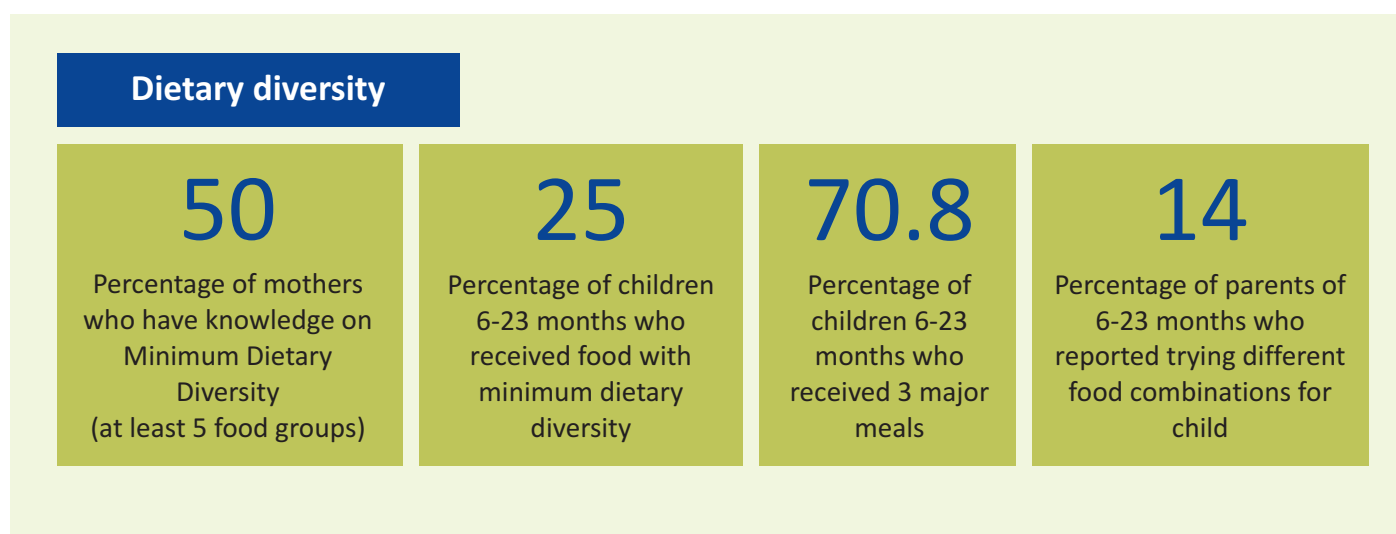
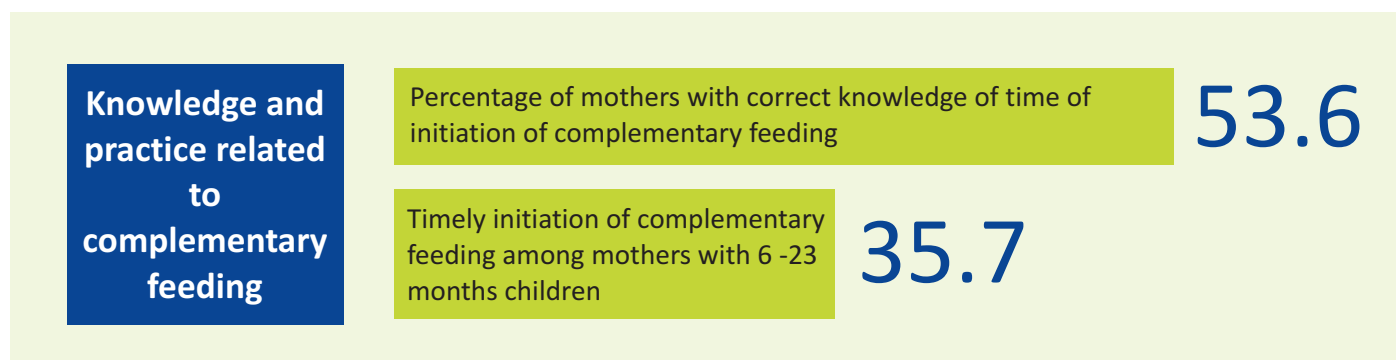
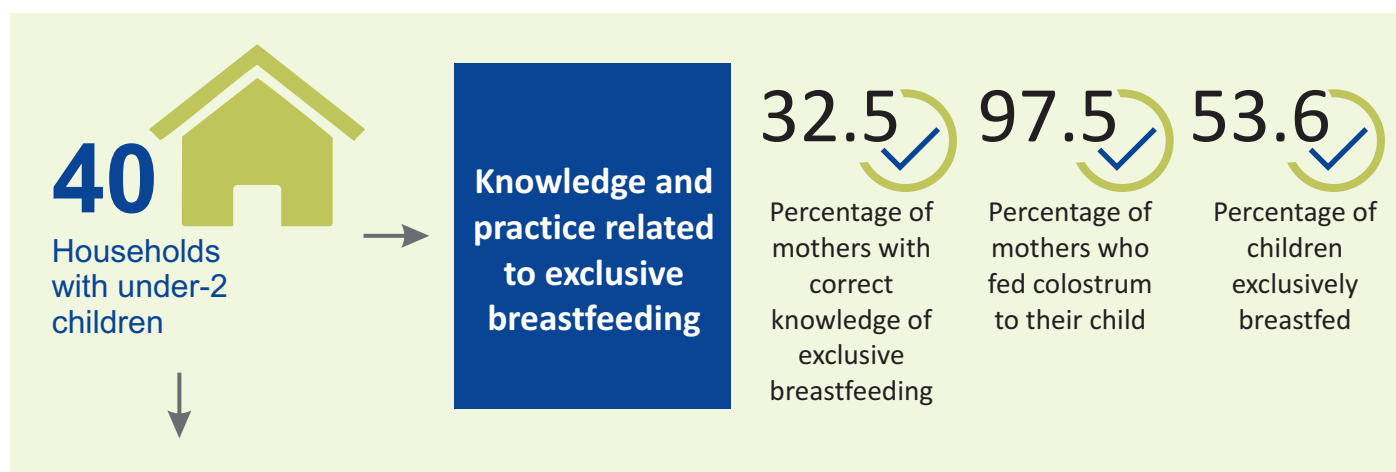
AWWs who counsel the mother by showing growth chart

# KNOWLEDGE AND PRACTICES OF MOTHERS OF UNDER 2 CHILDREN REGARDING CHILD FEEDING

## FACT SHEET

DHUBRI

The project "Prevention of malnutrition through case-specific counselling at home level" is a collaborative effort by the Directorate of Women & Child Development, Government of Assam and ITC Limited under Mission Sunhera Kal. As part of this project, a household level needs assessment study to understand current child feeding practice was conducted in Nayeralga block, Nayeralga sector, with high child malnutrition. Mothers and family members from 40 households with under-2 children participated in the survey.





#### KNOWLEDGE AND PRACTICE OF SUPERVISORS (%)

The project "Prevention of malnutrition through case-specific counselling at home level by cascading training of Anganwadi workers" is a collaborative effort by the Directorate of Women & Child Development, Government of Assam and ITC Limited under Mission Sunhera Kal. As part of this project, a Training Need Assessment (TNA) was conducted in the month of May & June 2023, in 7 ICDS blocks of Goalpara. A total of 83 Anganwadi Supervisors and 2103 Anganwadi Workers participated in the survey.



83

Total Supervisors surveyed

Supervisors who make monthly action plan based on Monthly Progress Report

30.1

Supervisors who provide feedback to AWWs based on respective Monthly Progress Report

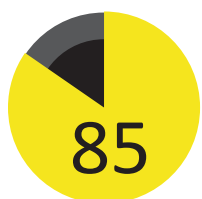
60.3

Supervisors who recognise better performing AWWs

26

#### KNOWLEDGE AND PRACTICE OF ANGANWADI WORKERS

#### Correct knowledge on infant and child feeding practice among Anganwadi Workers (%)



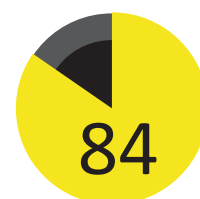
Exclusive breastfeeding



Minimum dietary diversity (MDD)



Child feeding as per IYCF recommendation



Pregnant women's weight gain is maximum in 3rd trimester

#### Home visitation and counselling reported by Anganwadi Workers (%)

36

Home visitation of 3rd trimester pregnant women for breastfeeding preparedness

24

Home visitation of 2-3 months old children to prevent breastfeeding faltering

57

Home visitation of children completed 6 months for timely initiation of complementary feeding

33

Home visitation of 7-8 months old children for diet diversity

#### Growth promotion and counselling by Anganwadi Workers (%)

44

AWWs who counsel the mother if the child's weight is stagnant for 2 months or more

62

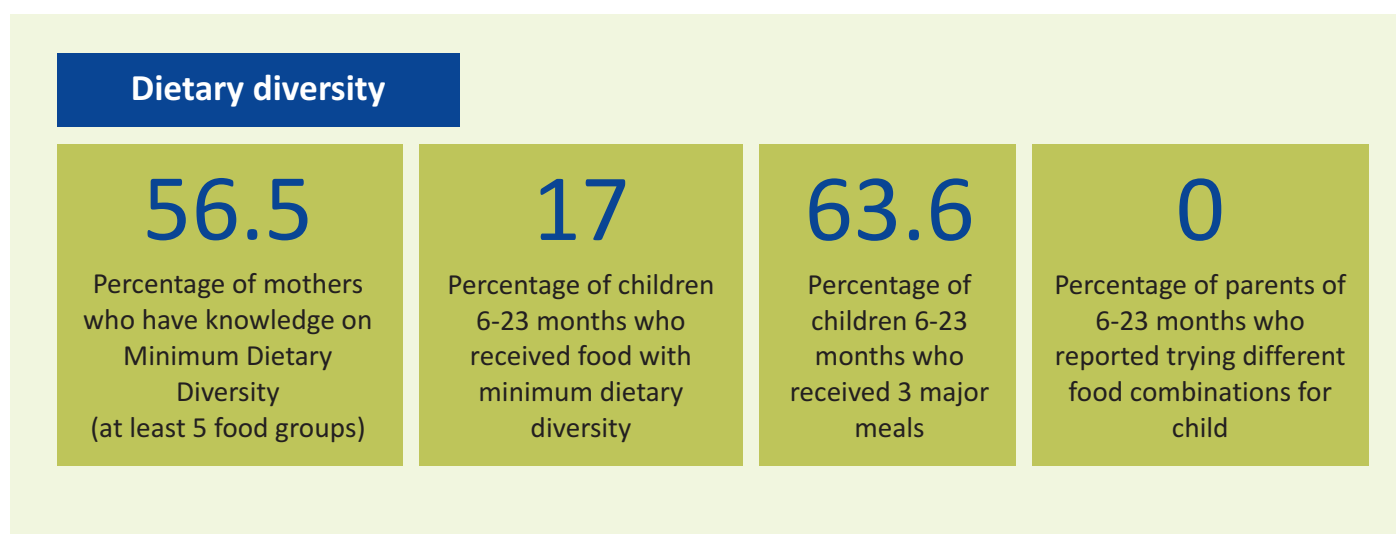
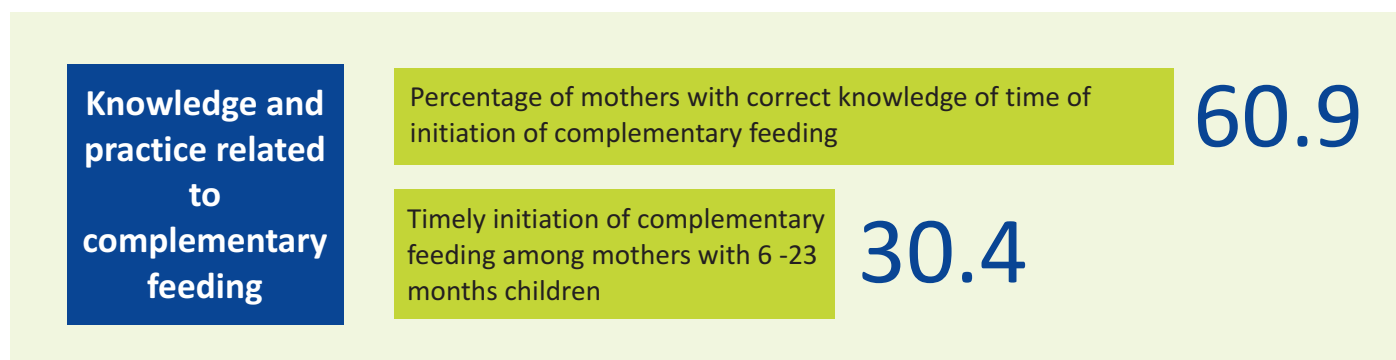
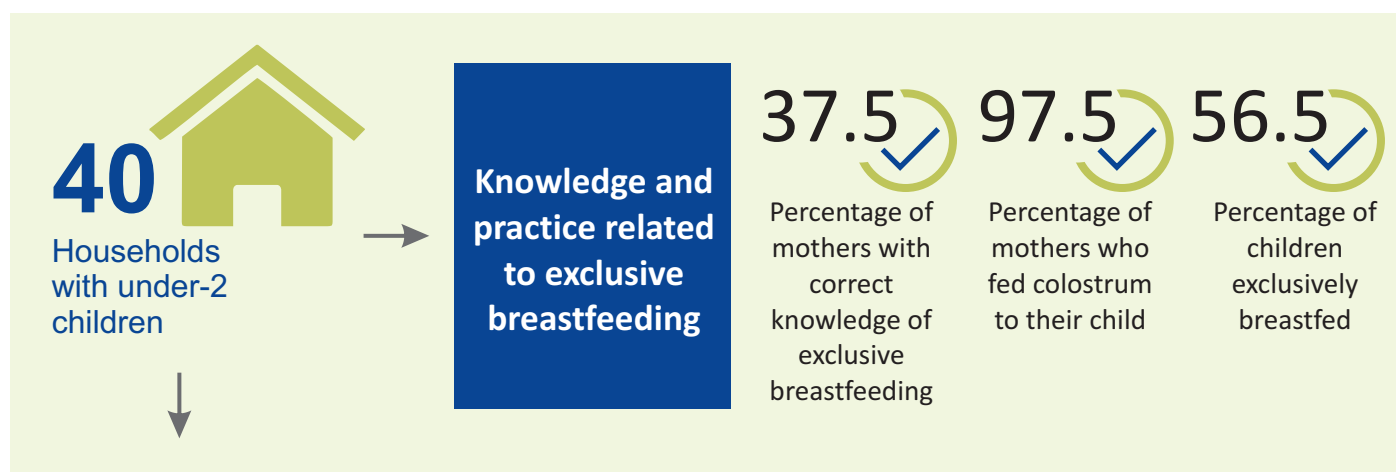
AWWs who counsel the mother by showing growth chart

# KNOWLEDGE AND PRACTICES OF MOTHERS OF UNDER 2 CHILDREN REGARDING CHILD FEEDING

## FACT SHEET

### GOALPARA

The project "Prevention of malnutrition through case-specific counselling at home level" is a collaborative effort by the Directorate of Women & Child Development, Government of Assam and ITC Limited under Mission Sunhera Kal. As part of this project, a household level needs assessment study to understand current child feeding practice was conducted in Jaleswar block, Katarihara sector, with high child malnutrition. Mothers and family members from 40 households with under-2 children participated in the survey.



#### KNOWLEDGE AND PRACTICE OF SUPERVISORS (%)

The project “Prevention of malnutrition through case-specific counselling at home level by cascading training of Anganwadi workers” is a collaborative effort by the Directorate of Women & Child Development, Government of Assam and ITC Limited under Mission Sunhera Kal. As part of this project, a Training Need Assessment (TNA) was conducted in the month of May & June 2023, in 5 ICDS blocks of Hailakandi. A total of 45 Anganwadi Supervisors and 978 Anganwadi Workers participated in the survey.



45

Total Supervisors surveyed

Supervisors who make monthly action plan based on Monthly Progress Report

22.9

Supervisors who provide feedback to AWWs based on respective Monthly Progress Report

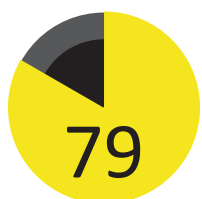
82.9

Supervisors who recognise better performing AWWs

48.6

#### KNOWLEDGE AND PRACTICE OF ANGANWADI WORKERS

#### Correct knowledge on infant and child feeding practice among Anganwadi Workers (%)



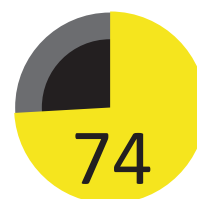
Exclusive breastfeeding



Minimum dietary diversity (MDD)



Child feeding as per IYCF recommendation



Pregnant women's weight gain is maximum in 3rd trimester

#### Home visitation and counselling reported by Anganwadi Workers (%)

26

Home visitation of 3rd trimester pregnant women for breastfeeding preparedness

43

Home visitation of 2-3 months old children to prevent breastfeeding faltering

54

Home visitation of children completed 6 months for timely initiation of complementary feeding

41

Home visitation of 7-8 months old children for diet diversity

#### Growth promotion and counselling by Anganwadi Workers (%)

56

AWWs who counsel the mother if the child's weight is stagnant for 2 months or more

77

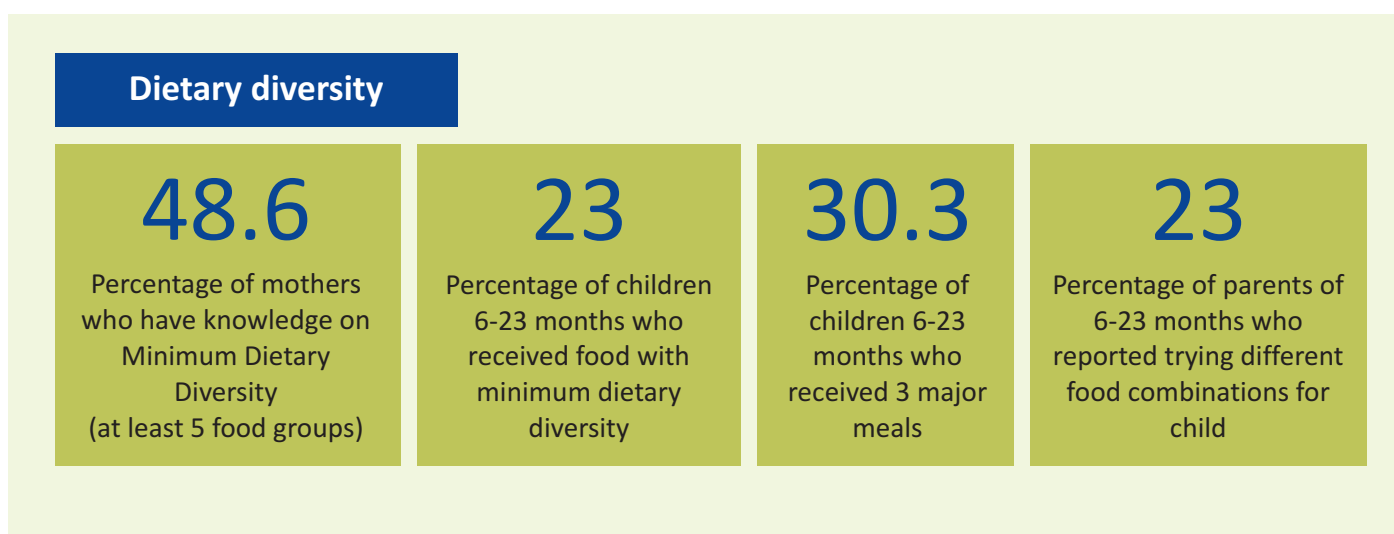
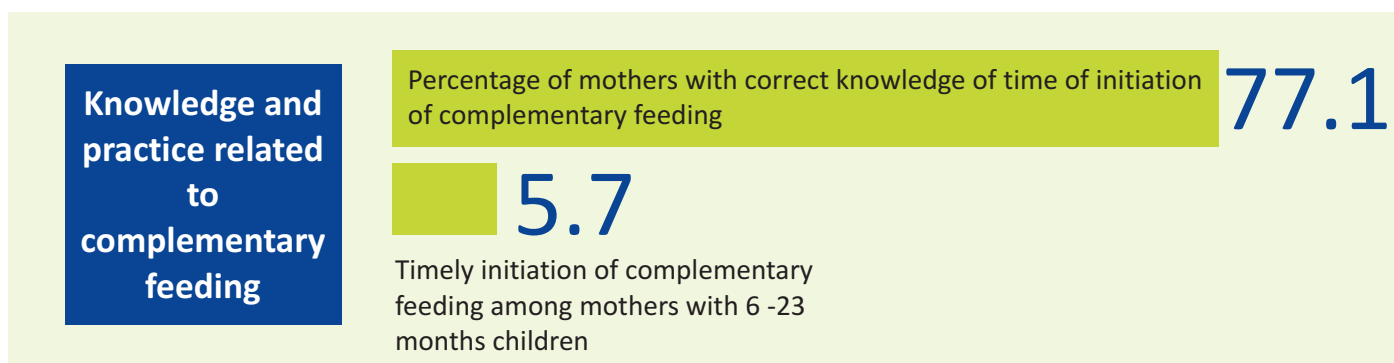
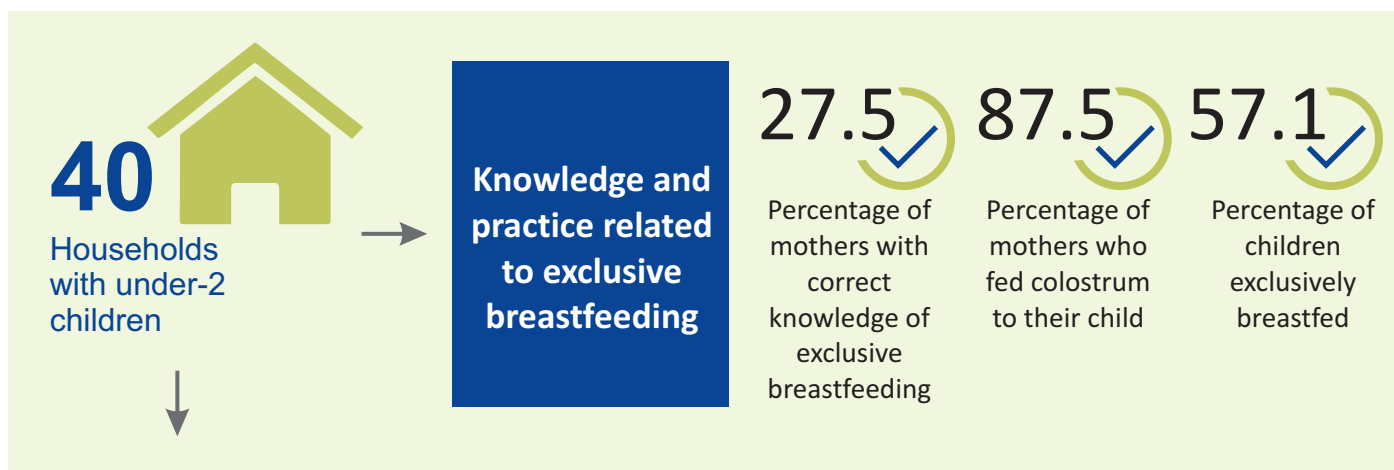
AWWs who counsel the mother by showing growth chart

# KNOWLEDGE AND PRACTICES OF MOTHERS OF UNDER 2 CHILDREN REGARDING CHILD FEEDING

## FACT SHEET

### HAILAKANDI

The project "Prevention of malnutrition through case-specific counselling at home level" is a collaborative effort by the Directorate of Women & Child Development, Government of Assam and ITC Limited under Mission Sunhera Kal. As part of this project, a household level needs assessment study to understand current child feeding practice was conducted in Lala block, Borbond-01 sector, with high child malnutrition. Mothers and family members from 40 households with under-2 children participated in the survey.



#### KNOWLEDGE AND PRACTICE OF SUPERVISORS (%)

The project “Prevention of malnutrition through case-specific counselling at home level by cascading training of Anganwadi workers” is a collaborative effort by the Directorate of Women & Child Development, Government of Assam and ITC Limited under Mission Sunhera Kal. As part of this project, a Training Need Assessment (TNA) was conducted in the month of May & June 2023, in 14 ICDS blocks of Kamrup. A total of 116 Anganwadi Supervisors and 1814 Anganwadi Workers participated in the survey.



**116** Total Supervisors surveyed

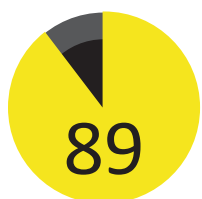
Supervisors who make monthly action plan based on Monthly Progress Report **58.5**

Supervisors who provide feedback to AWWs based on respective Monthly Progress Report **64.2**

Supervisors who recognise better performing AWWs **41.5**

#### KNOWLEDGE AND PRACTICE OF ANGANWADI WORKERS

#### Correct knowledge on infant and child feeding practice among Anganwadi Workers (%)



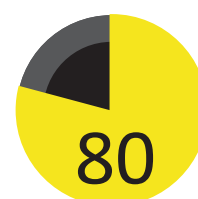
Exclusive breastfeeding



Minimum dietary diversity (MDD)



Child feeding as per IYCF recommendation



Pregnant women's weight gain is maximum in 3rd trimester

#### Home visitation and counselling reported by Anganwadi Workers (%)

**31**

Home visitation of 3rd trimester pregnant women for breastfeeding preparedness

**29**

Home visitation of 2-3 months old children to prevent breastfeeding faltering

**43**

Home visitation of children completed 6 months for timely initiation of complementary feeding

**31**

Home visitation of 7-8 months old children for diet diversity

#### Growth promotion and counselling by Anganwadi Workers (%)

**49**

AWWs who counsel the mother if the child's weight is stagnant for 2 months or more

**76**

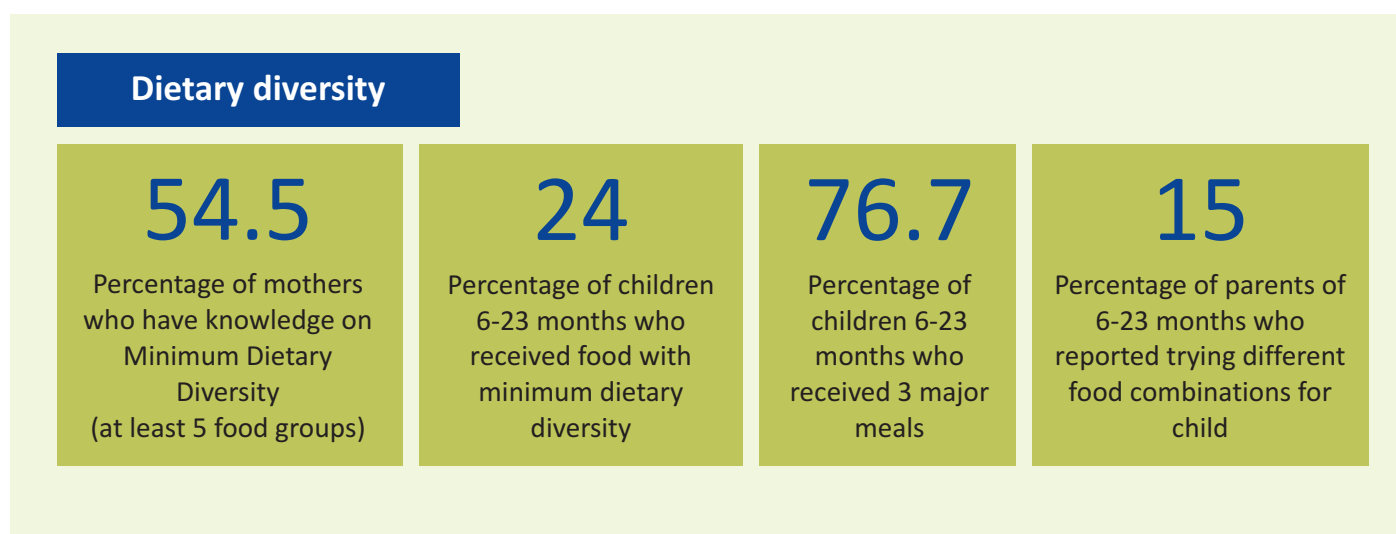
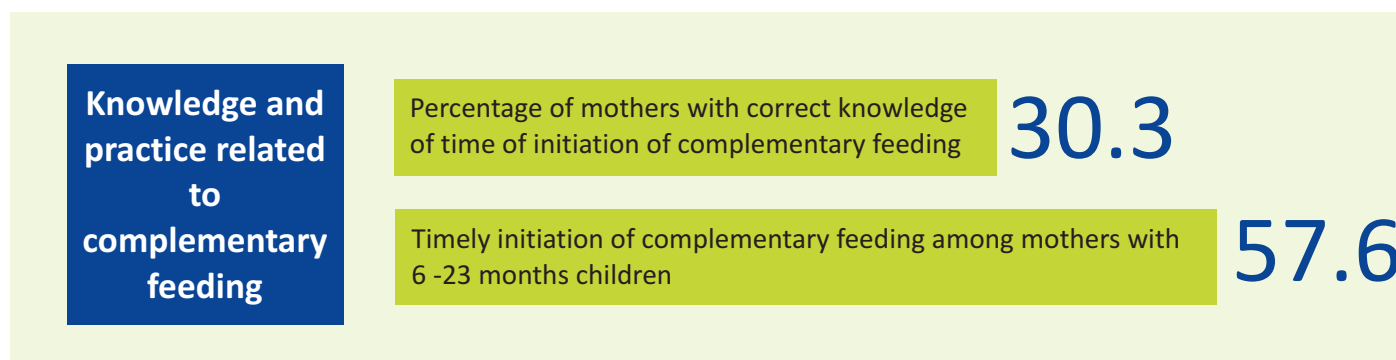
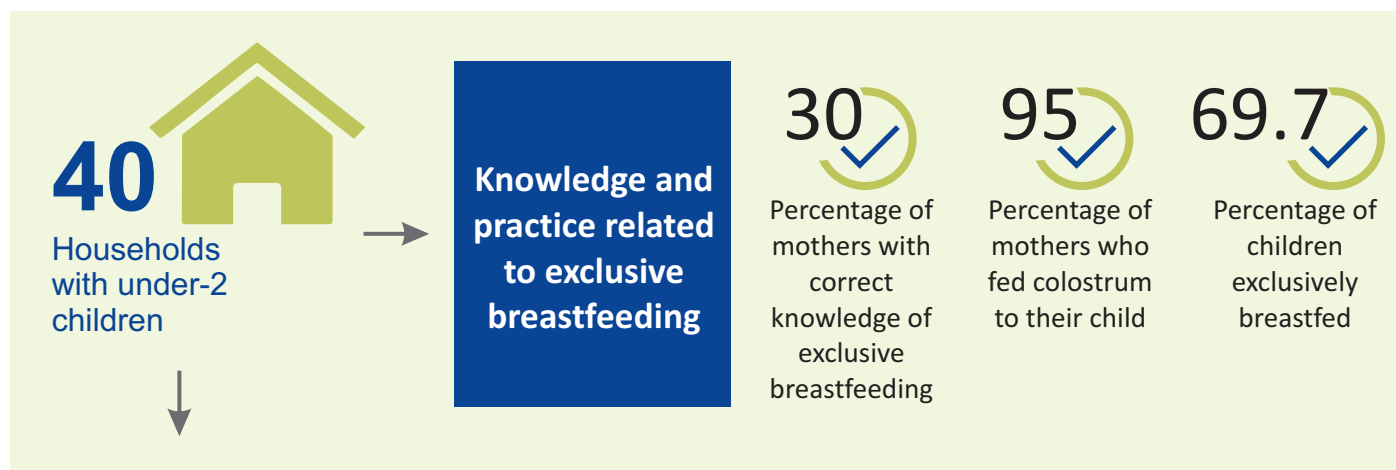
AWWs who counsel the mother by showing growth chart

# KNOWLEDGE AND PRACTICES OF MOTHERS OF UNDER 2 CHILDREN REGARDING CHILD FEEDING

## FACT SHEET

KAMRUP

The project "Prevention of malnutrition through case-specific counselling at home level" is a collaborative effort by the Directorate of Women & Child Development, Government of Assam and ITC Limited under Mission Sunhera Kal. As part of this project, a household level needs assessment study to understand current child feeding practice was conducted in Goroimari block, Hatipara-Batahidia sector, with high child malnutrition. Mothers and family members from 40 households with under-2 children participated in the survey.



#### KNOWLEDGE AND PRACTICE OF SUPERVISORS (%)

The project “Prevention of malnutrition through case-specific counselling at home level by cascading training of Anganwadi workers” is a collaborative effort by the Directorate of Women & Child Development, Government of Assam and ITC Limited under Mission Sunhera Kal. As part of this project, a Training Need Assessment (TNA) was conducted in the month of May & June 2023, in 5 ICDS blocks of Kamrup. A total of 36 Anganwadi Supervisors and 956 Anganwadi Workers participated in the survey.



36

Total Supervisors surveyed

Supervisors who make monthly action plan based on Monthly Progress Report

50

Supervisors who provide feedback to AWWs based on respective Monthly Progress Report

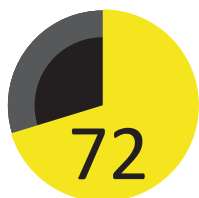
46.2

Supervisors who recognise better performing AWWs

34.6

#### KNOWLEDGE AND PRACTICE OF ANGANWADI WORKERS

#### Correct knowledge on infant and child feeding practice among Anganwadi Workers (%)



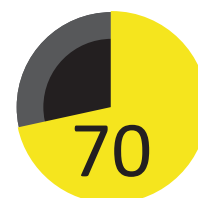
Exclusive breastfeeding



Minimum dietary diversity (MDD)



Child feeding as per IYCF recommendation



Pregnant women's weight gain is maximum in 3rd trimester

#### Home visitation and counselling reported by Anganwadi Workers (%)

19

Home visitation of 3rd trimester pregnant women for breastfeeding preparedness

22

Home visitation of 2-3 months old children to prevent breastfeeding faltering

40

Home visitation of children completed 6 months for timely initiation of complementary feeding

30

Home visitation of 7-8 months old children for diet diversity

#### Growth promotion and counselling by Anganwadi Workers (%)

52

AWWs who counsel the mother if the child's weight is stagnant for 2 months or more

66

AWWs who counsel the mother by showing growth chart

# KNOWLEDGE AND PRACTICES OF MOTHERS OF UNDER 2 CHILDREN REGARDING CHILD FEEDING

## FACT SHEET

UDALGURI

The project "Prevention of malnutrition through case-specific counselling at home level" is a collaborative effort by the Directorate of Women & Child Development, Government of Assam and ITC Limited under Mission Sunhera Kal. As part of this project, a household level needs assessment study to understand current child feeding practice was conducted in Mazbat block, Bahipukhuri sector, with high child malnutrition. Mothers and family members from 40 households with under-2 children participated in the survey.

