



6th Civil Engineer Squadron

Mr. Robert (Todd) Wynn
Base Civil Engineer

Prepared, Professional, Responsive -- Building the Future!



Overview



- THE 6 CES TEAM
- OUR FOCUS
- FY18/19 FSRM and MILCON



Mission

Provides explosive ordnance disposal, emergency management and air base operability, environmental quality, fire emergency services, and housing support for 6 AMW, USCENTCOM, USSOCOM, JCSE, SOCCENT, MARCENT and 28 other tenant units with a base population of 19,000. Plans, programs, designs, constructs, operates, and maintains 604 base facilities, totaling over 5 million square feet, on a 5,700-acre installation valued at over \$6.4B.

Vision

Operate as a world class organization by being the most efficient and effective AF Civil Engineer Squadron demonstrated through home station support and preparing readily deployable Airmen



History



- Nov 1999 – Squadron Undergoes Direct Conversion
- Jun 2007 – Converted CC to Civilian Director
- Nov 2007 – Award Housing Privatization Project
- Jul 2010 – Start of New Contract with Akima/IAP
- Mar 2011 – Privatized Water & Wastewater Infrastructure Systems
- Sep 2012 – Privatized Natural Gas Infrastructure
- Apr 2015 – AFAA Conducted Oversight Audit
- Sep 2015 – Began 6 CES Internal Restructuring



Current



■ Complex Business Relationships:

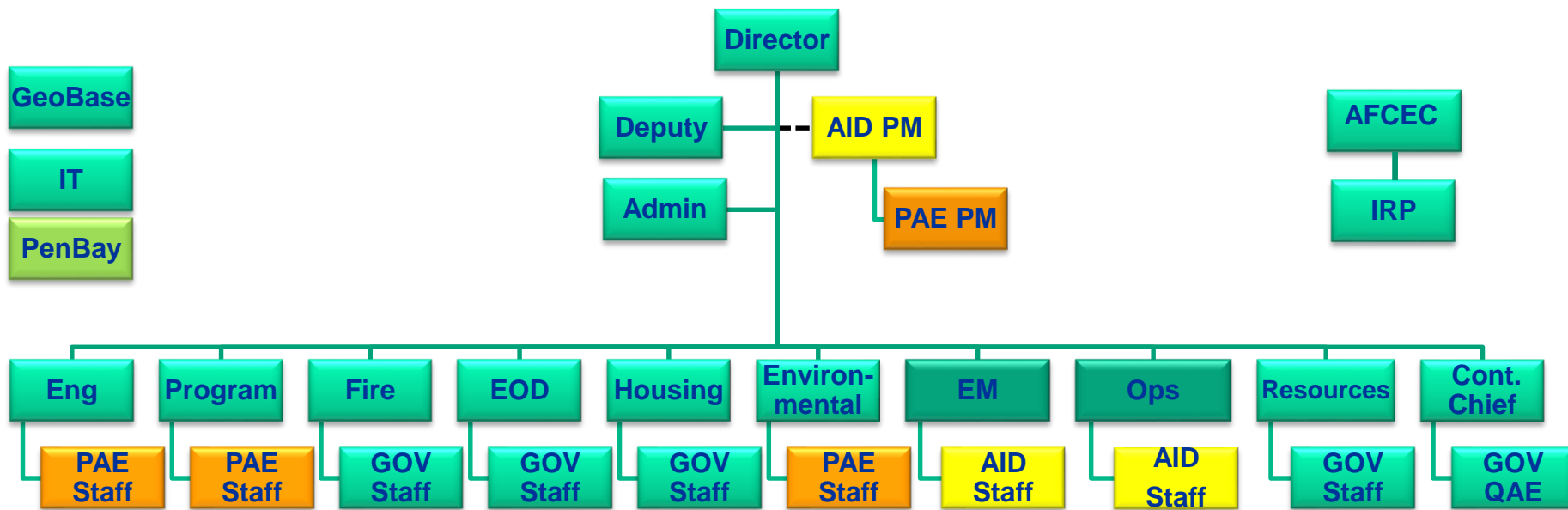
- AKIMA/PAE – Civil Engineer Services Support Contract
- CBRE – Energy Consulting Services
- Hydrogeologic, Inc (HGL) – Contract for ERA site cleanup
- Clark/Harbor Bay – Housing Privatization Partners/Property Mgrs
- ENSYNC Diversified Management – Entomology Services
- FGUA/US Water – Water/Wastewater System Owner/Operator
- MACC/MATOC – 5 Total Contractors available on Contracts
- PenBay/Photoscience – IT Services Support in CE
- TECO Peoples Gas – Natural Gas System Owner/Operator

■ Typical CE Contracts – Big 3

- SC Jones – Grounds Maintenance Contractor
- GCE (Gulf Coast Enterprises) – Custodial
- Six Nation – Refuse and Recycling



Current Org Chart



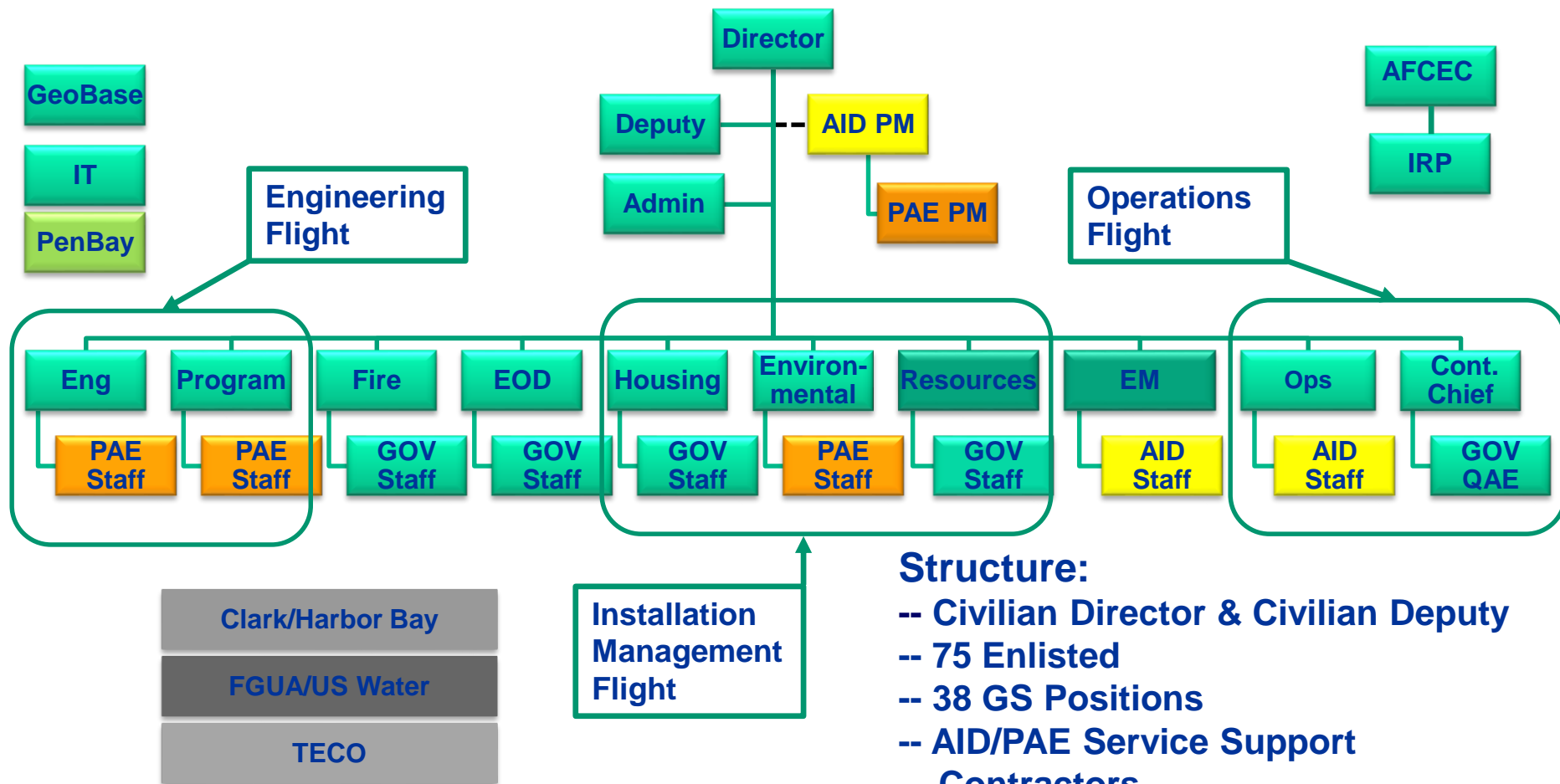
Structure:

- Civilian Director & Civilian Deputy
- 75 Enlisted
- 38 GS Positions
- AID/PAE Service Support Contractors

UMD: 426 Positions



Future Org Chart



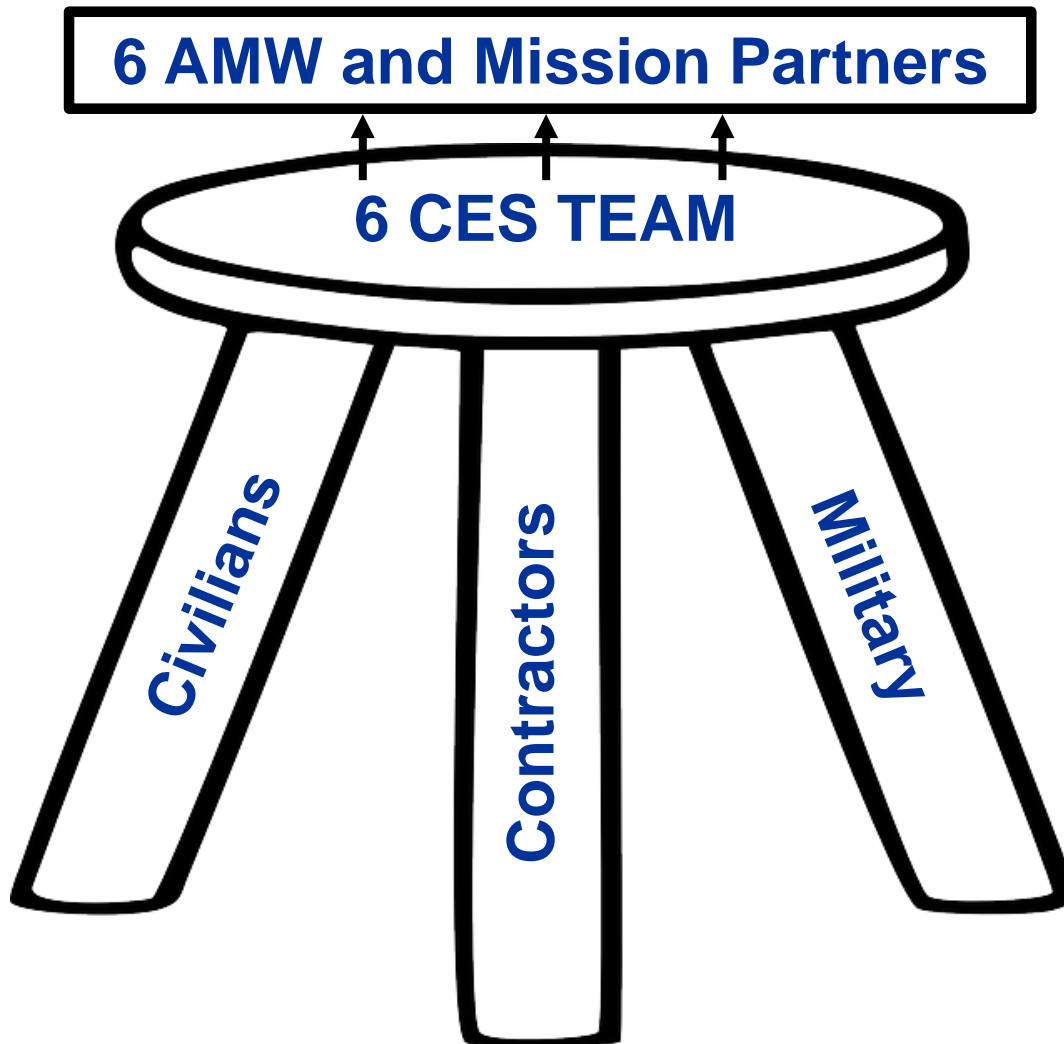
Structure:

- Civilian Director & Civilian Deputy
- 75 Enlisted
- 38 GS Positions
- AID/PAE Service Support Contractors

UMD: 426 Authorized Positions



6 CES Total Force





Overview



-
- THE 6 CES TEAM
 - OUR FOCUS
 - FY18/19 FSRM and MILCON



Our Focus



- **EFFECTIVE**
 - PROVIDE FULL FACILITY/INFRASTRUCTURE CAPACITY TO MEET MACDILL's MISSIONS
 - RELIABLE FACILITIES/SYSTEMS
 - ALL ASSETS IN GOOD TO EXCELLENT CONDITION
- **EFFICIENT**
 - ENERGY
 - MAINTENANCE
 - SPACE USE/LOCATION
- **ENDURING**
 - QUALITY WORK/HOME/SERVICE ENVIRONMENT
 - SECURE/SAFE
 - BUILT CORRECTLY TO LAST

Prepared, Professional, Responsive -- Building the Future!



MacDill AFB Portfolio

We Have a Big Challenge!



MACDILL ASSET PORTFOLIO

FACILITIES

294 Buildings
4.9 M SF Total

COCOMS & MPs

2.1 M SF

BASE SUPPORT

2.0 M SF

FLYING MISSION

620K SF

HOUSING

576 Units
448 Visitors Qs
390 Dorm Rooms

TRANSPORTATION

AIRFIELD

11,000 FT Runway
921,269 SY Apron

PAVEMENTS

48 Miles Roadway

WATERWAYS

2 Channels,
47 Docks
3000' Exclusion Zone

UTILITIES

ELECTRICAL

56 Miles of High
Voltage DIST

WATER

82 Miles OF DIST

SEWER

80 Miles OF DIST
WWTP

GAS

25 Miles OF LINE

SECURITY & MISSION

6 Mile Land
perimeter

8.6 Miles Water
Perimeter

4 Entrance Gates

29 Aircraft

19,000+ Populous

NATURAL

1195 Acres
Wetlands

22 Protected
Species

54 Clean Up Sites

80% in 100-yr
Flood Plain

Prepared, Professional, Responsive -- Building the Future!



Overview



-
- THE 6 CES TEAM
 - OUR FOCUS
 - **FY18/19 FSRM and MILCON**



Design/Construction Execution



- **\$25M in In-House Annual Design Capacity and Prepare Projects as Either Design/Build or Design/Bid/Build**
- **Majority of Program Executed Through 6 CONS by our MACC and MATOC Design/Build Contractors**
 - **RM Williams**
 - **Danner Construction**
 - **ABBA Construction**
 - **Bay Area Builders Construction**
 - **BMI Construction**
- **Corps of Engineers is construction agent for MILCON**



FY18 Ongoing SATAF Projects



TITLE	START CNS	BOD
Repair (R&M) H2 for additional KC 135s	30-Oct-17	15-Nov-18
Repair (R&M) H3 for additional KC 135s	28-Feb-18	13-Aug-18
Repair (R&M) H4 for Additional KC135's	6-Sep-17	22-Apr-18
Rpr (R&M) H5 for 310 AS & 927 OSS	21-Oct-17	17-Dec-18
Repair (R&M) B6 for MXG HQS	8-Jan-18	21-Jul-18
Repair (R&M) B9 for 63 ARS	29-Sep-17	20-Apr-18
Repair (R&M) B49 for LRS	10-Oct-17	18-Apr-18
Repair (R&M) B53 for 6 OG & 927 OG	30-Oct-17	15-Jun-18
Repair (R&M) B55 for 6 AMXS & 927 AMXS	9-Nov-17	19-Oct-18
Repair (R&M) B56 for 6 MXG & ARS	9-Nov-17	23-Jul-18
Demo B28 & 173 and Construct MXS Parking	16-Nov-17	29-Jul-18
Repair B48 for MXS	23-Oct 17	30-Nov-17



FY18 Hurricane IRMA Repair



Title	Status	Under \$500K	\$500K - \$1M	\$1M+
Downed power poles	Bid			X
Taxiway E, K, M depressions	Bid		X	
Repair SOCCENT Roof & Interior Damage B1066	Bid		X	
Repair Fire Station B26 Tile Roof	Bid	X		
Repair Fuel Truck Maintenance Roof B1065	Bid		X	
Repair FSS Facility Roof B373	Bid		X	
Repair Alert Facility Roof B1105	Bid		X	
Repair flat roof and gutter Multi, B552, B924, B27, B411	Bid	X		
Repair Metal roof and gutter Multi, B1110, B847, B54, B717, B723, B926, B381	Bid			X
Repair Shingle roof and gutter Multi, 726, 1062, 30, 862, 89, 1730, 24, 2017	Bid		X	
Repair Roof and Gutter DCC B359	Bid	X		
Repair VQ Building Envelope 350	Bid		X	



FY18 Hurricane IRMA Repair



Title	Status	Under \$500K	\$500K - \$1M	\$1M+
Repair SOCCENT Building Envelope B1043	Bid	X		
Golf Course Rain Shelter B1701	Bid	X		
Replace Skeet Range Admin Building B1100	Bid	X		
Repair Base-wide light Poles	Bid	X		
Relocate Age Station/Demo Trailer & canopy	Bid		X	



FY18

6 CES/Mission Partners



6 CES				
Title	Status	Under \$500K	\$500K - \$1M	\$1M+
Repaint Airfield Markings	Design			X
Sustainment Paint	Design		X	
Repair Postal Screening Septic System B893	Design		X	
Relocate Age Station/Demo Trailer & canopy	Design		X	

Mission Partners				
Title	Status	Under \$500K	\$500K - \$1M	\$1M+
SOCOM Repair Fire Alarm Systems B501 & B156	Design	X		
CENTCOM Add AHUs to Attic B570	Design		X	
SOCCENT Trailer Utilities	Design		X	
CENTCOM Sidewalks/Light/Bridge	Design	X		
Construct SOCCENT Warehouse (1)	Design			X
Construct SOCCENT Warehouse (2)	Design			X



FY18/19 AFIMSC CTO



Title	Status	Under \$500K	\$500K - \$1M	\$1M+
Convert B378 Back to Dorm (FY18)	Design			X
Repair Airfield Lighting Vault (FY18)	Design			X
Repair Taxiway Signage	Design			X
Repair Taxiway Kilo & Lima	Design			X
Rpr HVAC & Renovate COMM Fac B262	Design		X	
Renovate B38 Military Family Readiness Center	Design		X	
Repair Roofs, MFAC	Design			X
Repair HVAC Chapel B355	Design			X
Repair HVAC PAX Term, B90	Design			X
Repair HVAC DUC B71	Design		X	
RPR Grounding Points Approach Pier B1603	Design		X	



FY18 Postured for EOY Fallout



FY18 EOY

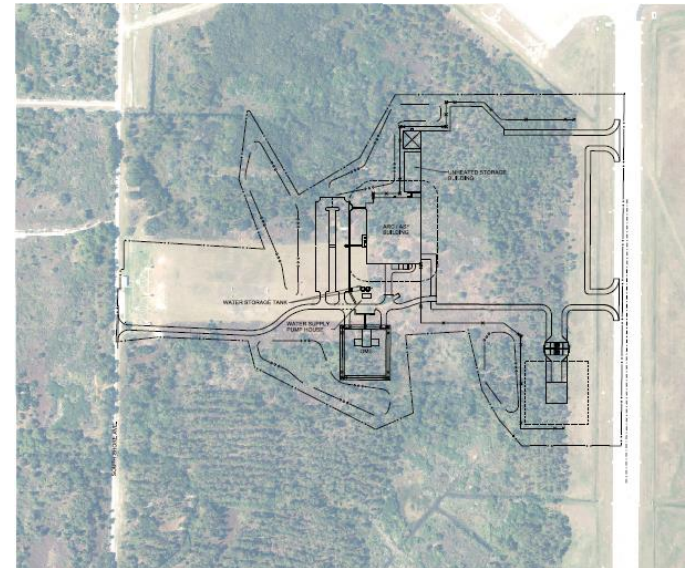
Repair PMEL HVAC	Design		X	
Repair HVAC Ed Center B252	Design			X
RPR & Reno Fuels Operations, B1062	Design		X	
Repair Base Pavements	Design			X



Ongoing MILCON Projects



- **Army Reserve Beddown – 200-member Army Reserve Center and Aviation Support Facility for 8 UH-60 and 15 HH-60 Blackhawk helicopters**
- **SOCOM Operational Support Facility - 3,370 SM Utility Plant to support SOCOM Headquarters; UPS, Boilers, Backup Generators, and Chillers/Cooling Towers**



■ **Systems**

Prepared, Professional, Responsive -- Building the Future!



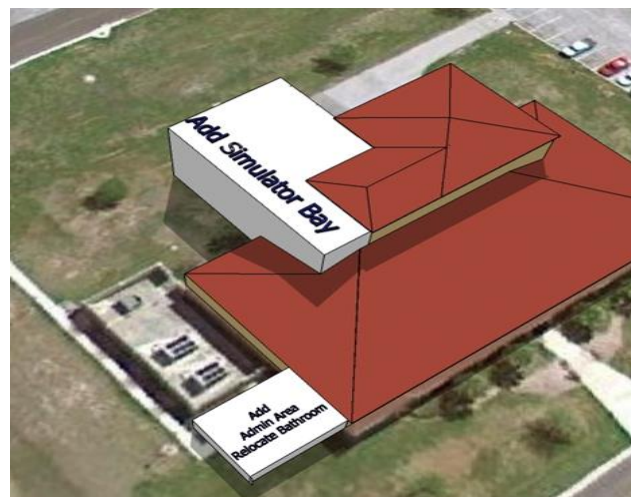
Current MILCON Projects



- **New OG/MXG HQ - 14,548 SF facility including offices, administration and ancillary space**



- **Flight Simulator Addition - 4,946 SF addition and reconfigure interior space for an additional flight simulator bay**





Future MILCON Projects



- **SOCCENT Operational Facility - Constructs a 25K SF facility to correct existing space shortfalls, move staff out of off-base leases and on-base temporary buildings, and meet needs of SOCCENT authorized and funded staff growth through FY19**
- **USSOCOM Global Messaging Facility - New SecDef Directed Mission; constructs 100K SF facility to house up to 600 additional personnel**
- **USCENTCOM Operational Facility - Constructs 247SF facility and moves ~600 personnel currently in temporary facilities into permanent**



Summary



- **Dedicated Total Force Team that works together to meet mission needs**
- **Focused on providing Effective, Efficient, and Enduring facility and infrastructure support to Team MacDill**
- **Currently working an ambitious FY18/19 FSRM Program and current/future MILCON Program**



Questions?