



# PROJECT NAVIGATE

## AUGUST NEWSLETTER

### IMPORTANT INFORMATION

#### Who We Are

Project NaviGate is a grant-funded project spearheaded by the EMPOWER Lab at Georgia State University. We will provide much needed navigation services to connect community based organizations and facilitate referrals to increase service utilization, prevention, and treatment in the areas of trauma exposure, HIV, and substance misuse for underserved.

#### What We Do

Project NaviGate will conduct a Community Needs Assessment (CNA), develop and disseminate a public health messaging and awareness campaign, increase organizations' capacity to deliver culturally-informed services, and provide HIV and substance misuse screenings to help facilitate prevention and treatment in 4 of the 48 federally-designated "hotspots" hardest hit by the HIV epidemic: Cobb, Dekalb, Fulton, and Gwinnett counties in Georgia.



- ★ COBB
- ★ DEKALB
- ★ FULTON
- ★ GWINNETT

### 2022-2025 GOALS

Goal #1: Complete Community Needs Assessment of HIV/substance misuse & barriers /facilitators to prevention & treatment.

Goal #2: Create plan of action with community partners for successful development piloting navigation services.

Goal #3: Increase capacity of partners to provide prevention & treatment services.

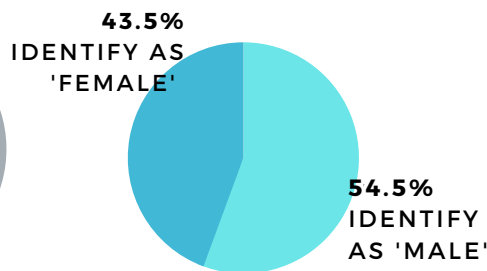
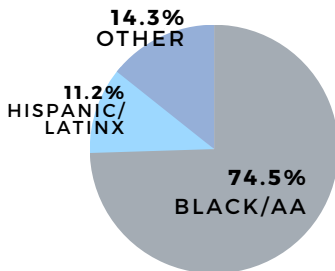
Goal #4: Develop a community partnership-based implementation plan.

Goal #5: Implement a public health messaging and awareness campaign, in addition to providing community-wide screenings.



# OUR COMMUNITY NEEDS ASSESSMENT

857 PARTICIPANTS!



Substance use: 66.04% had previously sought out services

HIV: 47.47% had previously sought out services

Trauma: 60.9% had previously sought out services

“PROJECT NAVIGATOR TARGETS TWO PERVASIVE PUBLIC HEALTH CONCERNS: HIV AND SUBSTANCE MISUSE.”

## Project Navigator



Ashanti J. Brown (she/her)  
2nd Year Doctoral Student

Research Interests: Improving culturally-tailored interventions for racial/ethnic minorities, risk and resiliency for Black youth and women, and the impact of racial and intergenerational trauma on Black individuals PTSD outcomes.

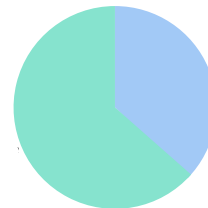
### ACCESSIBILITY:

- 31% of participants found it 'very easy' to access **substance use** services
- 23.3% found it 'very easy' to access **HIV** services
- 22.4% found it 'very easy' to access **trauma** services

### DIFFERENT THERAPY MEDIUMS:

- 28.16% are extremely comfortable in using **self-guided tools** (own therapeutic services)
- 33.67% are extremely comfortable using **in-person** individual services
- 24.95% are extremely comfortable using **in-group** services
- A larger percentage, **38.08%** are extremely comfortable using an **online/telehealth service** (professional/trained therapist) to access services.

63.5% HAVE BEEN TESTED FOR HIV & OTHER STIS BEFORE



36.5% HAVE NOT



## WE NEED YOU!

**Share** our **Community Needs Assessment** form with your clients and your community! If you are able to help share our flyer and place our survey posters, please email us at **theempowerlab@gmail.com!**



# PROJECT NAVIGATE

## AUGUST NEWSLETTER



2023

WE CREATE

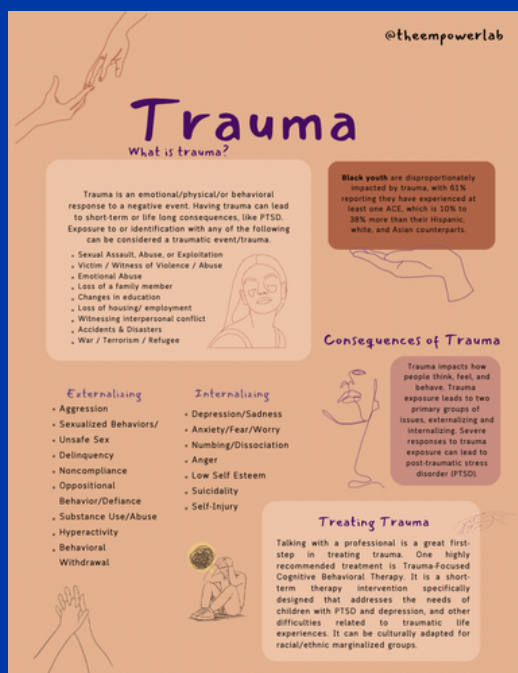


ONLINE  
RESOURCES!

Check out our work below,  
and download any for free at



[www.drishametzger.com/  
online-resources](http://www.drishametzger.com/online-resources)



Topics include HIV, substance  
abuse, racial trauma, and more!

## COMMUNITY PARTNERS



Provide us with your information and  
you'll be added to our referral list for  
clients! We're also building a provider  
network for trauma, HIV, and  
substance misuse organization.



ADDITIONALLY, WE'D LOVE  
TO GIVE YOU A SHOUT-OUT  
ON OUR SOCIAL MEDIA!



# PROJECT NAVIGATE

## AUGUST NEWSLETTER

2023

### RECENT NEWS

We've conducted 18 trainings for organizations since January 2023!



### 📍 SITE VISITS

We are continuing to conduct site visits and community partner organizations should contact us at [theempowerlab@gmail.com](mailto:theempowerlab@gmail.com) to schedule one today!



We encourage in-person time to connect with our project!

### DID YOU KNOW?

We offer racial trauma trainings **FREE** to Project Navigate partners!

**THRIVE SS VISION:**

TO END DEATH, SHAME  
AND STIGMA FOR BLACK  
SAME-GENDER-LOVING  
MEN LIVING WITH HIV.

# COMMUNITY PARTNER SPOTLIGHT

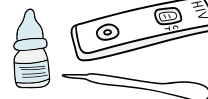
We had so much fun  
joining the Thrive SS  
Block Party!



@THRIVE\_SS



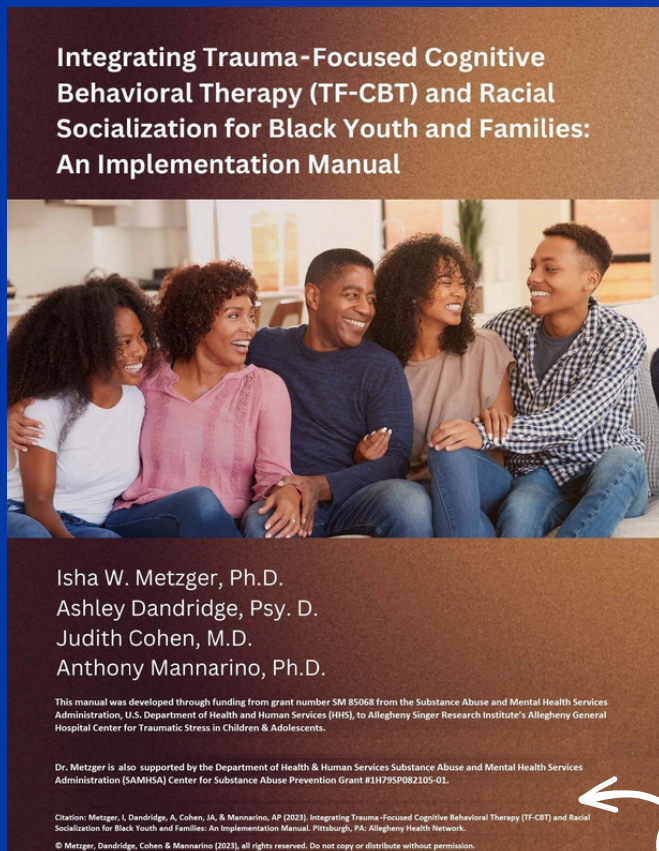
*Thank you to Thrive SS  
for the great partnership  
& amazing work you do!*



Thrive SS  
offers discrete  
at-home **HIV**  
**test kits!** They  
provide  
pickup and  
**FREE** delivery.

# INTRODUCING...

## THE TF-CBT AND RACIAL SOCIALIZATION IMPLEMENTATION MANUAL!



- How to integrate TF-CBT with Racial Socialization
- For *Black youth ages 3-17 years and their parents and/or other caregivers* who experience racial-related stress or trauma + other types of significant trauma

**CLICK THE MANUAL TO VIEW**