



Hours of Operations

March - October
Monday - Sunday
8:00 AM - 6:00 PM
(All Carts in by 6:30 PM)

November - February
Monday - Sunday
8:00 AM - 4:00 PM
(All Carts in by 5:00 PM)



**HISTORIC SETTING.
EXTRAORDINARY PLAY.**

City of Dublin's Riverview Golf Course opened in 1977. This 18-hole public golf course includes 6161 yards from the longest tees with a slope rating of 120 and a USGA rating of 69.1. The course features 4 tee sets to accommodate varying skill levels.

Championship	6,168	69.8	123
Men's	5,562	66.7	116
Seniors	5,125	64.6	109
Ladies	4,978	69.9	120

Located off I-16 at exit 54, Dublin's only public golf course offers 18 naturally perfect holes along the Oconee River.



478.275.4064

300 Riverview Drive
Dublin, GA 31021

www.dublinriverview.com





Memberships

Regular: \$500.00 Seniors: \$400.00 Junior: \$150.00

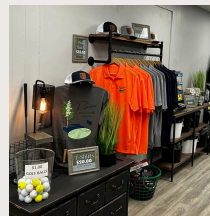
Regular Rates: (with cart)

<u>Days</u>	<u>18 holes</u>	<u>9 holes</u>
M - F	\$28.00	\$16.00
S - S	\$31.00	\$17.50

Junior & Senior Rate: (with cart)

<u>Days</u>	<u>18 holes</u>	<u>9 holes</u>
M - F	\$22.00	\$15.50
S - S	\$24.00	\$16.00

(Juniors: 17 & under ~ Seniors: 60 or older)



Pro Shop

Golf apparel, accessories, and cold drinks available.



Driving Range

-Large & small buckets
-Purchase a Loyalty Card as a gift!



Tournaments

Book a reservation today! Ask Pro-Shop or complete form online.

In 1975, the Dublin-Laurens Development Authority and Chamber of Commerce had dreams of constructing an 18-hole public golf course on the beautiful river site. Dublin's Chamber of Commerce donated 67 acres and the Dublin-Laurens County Development Authority purchased 140 acres from Martin Theater Group of Columbus to create the course.

On May 21, 1976, the ground breaking was held, and construction began on the Riverview Golf Course under the supervision of Mr. Don Lamb Sr. and Authority Development Chairman, Mr. Louis Livingston.

Upon completion, the Authority turned ownership over to the City of Dublin in exchange for utility services at a West Dublin Industrial site. The course was opened to the public in the spring of 1977.



\$5.00 off with proof of current hotel receipt.

www.dublinriverview.com